

TALL SHIPS RACES 2025

Captains' Briefing – KRISTIANSAND



Sail Training International

CAPTAINS' BRIEFING

- Welcome and Roll Call
- Meet the Team
- Undocking and Tall Ships Parade
- Weather Forecast
- Race Start and Course
- Race Communications
- Arrival Information– ESBJERG
- Other Business



Sail Training International

MEET THE TEAM



Sail Training International

STI RACE TEAM KRISTIANSAND



Magda Makowska
Race Director



Harry Allaway
Assistant Race Director



Ian Lerner
Assistant Race Director



Laura Blyth-Brown
Race Administrator



Vanessa Mori
Commercial Director



Ulf Siegel
Vessel Inspector/Comms
Officer



Signe Zigela
Vessel Inspector/Comms
Officer



Helene Lerner
Vessel Inspector/Comms Officer



Penny Tranter
Chartered Meteorologist



Mal Riley
Vessel Inspector/Comms
Officer



Alan James
CEO



Karen James
Race Office Assistant



Abi Haywood
Media Assistant



Krzysztof Romanski
Official Photographer



Lesley Sale
Comms Officer



Eline Kristansen
Youth Council Rep



Sail Training International

UNDOCKING & TALL SHIPS PARADE



Sail Training International

**30. JULI –
2. AUGUST 2025**



**HELLO
SAILOR!**





Sail parade

We hope everybody have had a great stay in Kristiansand!

Departure day and parade !

tallshipsraceskristiansand.no



HELLO
SAILOR!





2.3 Pilots

Vessel must book pilot through the SafeSeaNet system, minimum 24 hours in advance.

Changes to the start time of 2 hours or more must be made as soon as possible and on an ongoing basis.

Final confirmation of the start time must be given no later than 2 hours before the expected start time.

If circumstances occur that the vessel could not have foreseen, the booking deadline in the first paragraph may be waived. Such circumstances must be documented in writing.

For vessels below 70 m in length and 20 m width, Pilot is exempt.

2.4 Tugs

Tugs will be in attendance in the port of Kristiansand. Their services are free of charge for participants in the Tall Ships Races. Several tugs are available and will escort the vessels to their assigned berth.

2.5 Agency Services

The Agencies for Tall Ship Races in Kristiansand



Pentagon Marine AS
T: +47 47 20 20 10
M: +47 91 38 11 43
E: agency.norway@pentagonfreight.com
A: Mjaavannsvegen 154,
4628 Kristiansand, Norway

For more information about Pentagon's services, locations, shipment tracking, or market updates, please visit their website www.pentagonfreight.com

tallshipsraceskristiansand.no



HELLO
SAILOR!



| Vessel | ETD | Shore conn. | Pilot |
|-------------------|---------|-------------|-------|
| Shabab Oman II | 08:30 | X | 08:30 |
| Betty | 08:30 | Crew | |
| Excelsior | 08:30 | Crew | |
| Boy Leslie | 08:30 | Crew | |
| Pascual Flores | 08:45 | 08:00 | |
| Capitan Miranda | 08:45 | | 08:30 |
| Morgenster | 08:45 | | |
| Pogoria | 08:45 | | |
| Fryderyk Chopin | 08:45 | | |
| Alexander V. H. 2 | 08:45 | 07:30 | |
| Kapitan Borchard | 08:45 | | |
| Valborg | 08:45 | 07:00 | |
| Sørlandet | 11:00 | | |
| Christian Radich | 09:00 | 07:00 | |
| Dar Młodzieży | 09:45 | 07:30 | 09:45 |
| Rupel | 09:00 | | |
| Atlantica | 09:++ | | |
| Loa | 09:++ | | |
| Thalassa | 09:++ | | |
| Gulden Leeuw | 09:++ | | |
| Kapitan Glowacki | 09:++ | | |
| Fulton | 09:++ | | |
| Tara | 09:++ | | |
| Ryvingen | 09:++ | | |
| Christiania | 09:++ | | |
| Hestmanden | 11:00 | | |
| Swan | 9 to 11 | | |
| Jens Krogh | 9 to 11 | | |
| Fulton | 9 to 11 | | |
| Milpat | 9 to 11 | | |
| Maybe | 9 to 11 | | |
| Jolie Brise | 9 to 11 | | |
| Libertad | 11:15 | | 11:00 |

Departure Schedule



**HELLO
SAILOR!**





Departure Schedule

| | |
|-----------------------|---------|
| Farurej | 9 to 11 |
| St.Iv | 9 to 11 |
| Espirit | 9 to 11 |
| Helena | 9 to 11 |
| Alba Explorer | 9 to 11 |
| Williwaw | 9 to 11 |
| Ocean spirit of Moray | 9 to 11 |
| Cykas | 9 to 11 |
| Belfer | 9 to 11 |
| HNMLS Urania | 9 to 11 |
| Aries | 9 to 11 |
| OP Stok 3 | 9 to 11 |
| Corsaro II | 9 to 11 |
| Rona II | 9 to 11 |
| James Cook | 9 to 11 |





Parade of ships

Hestmanden
Sørlandet
Class A, B, C & D
A.R.A. Libertad



tallshipsraceskristiansand.no

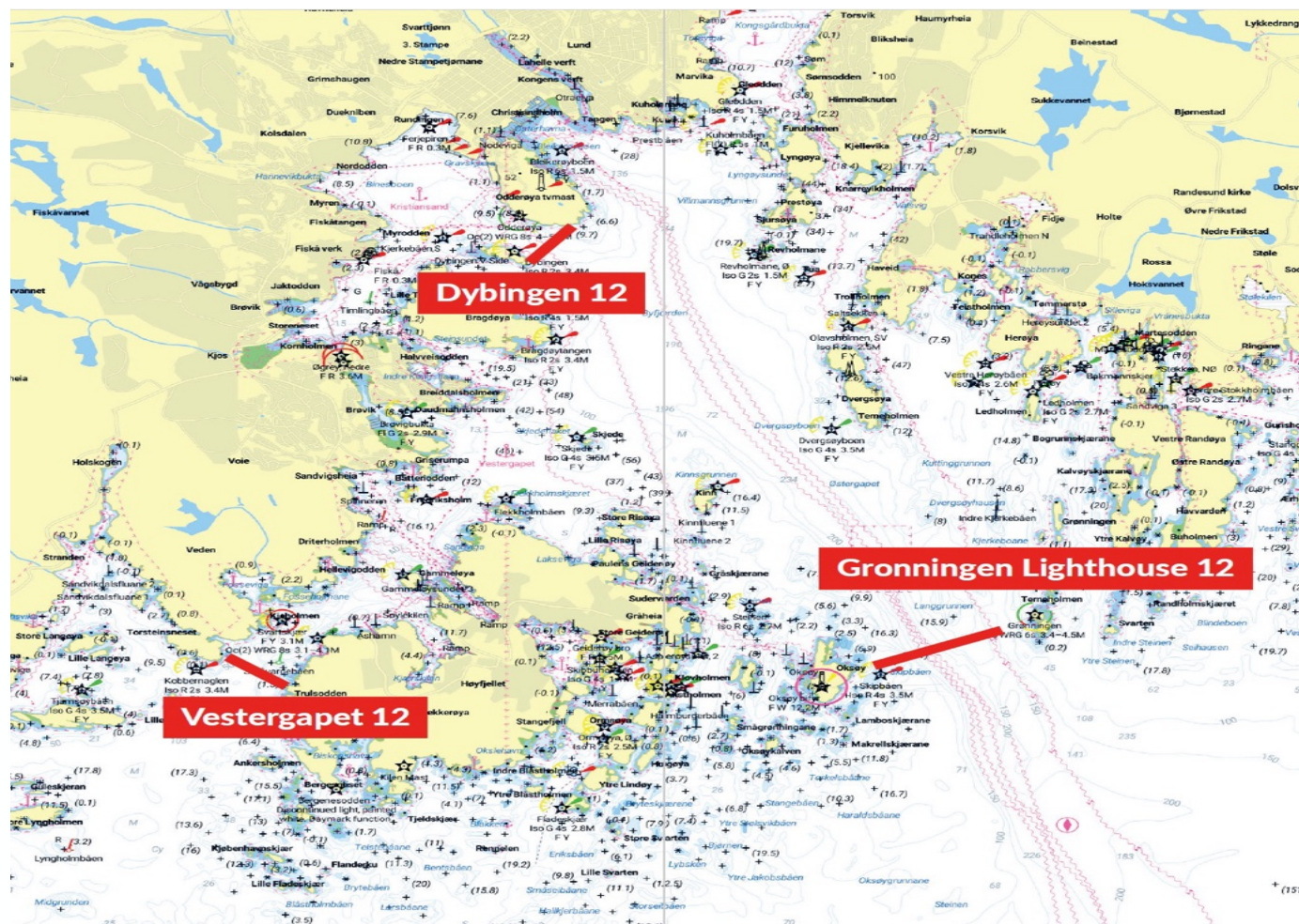


HELLO
SAILOR!





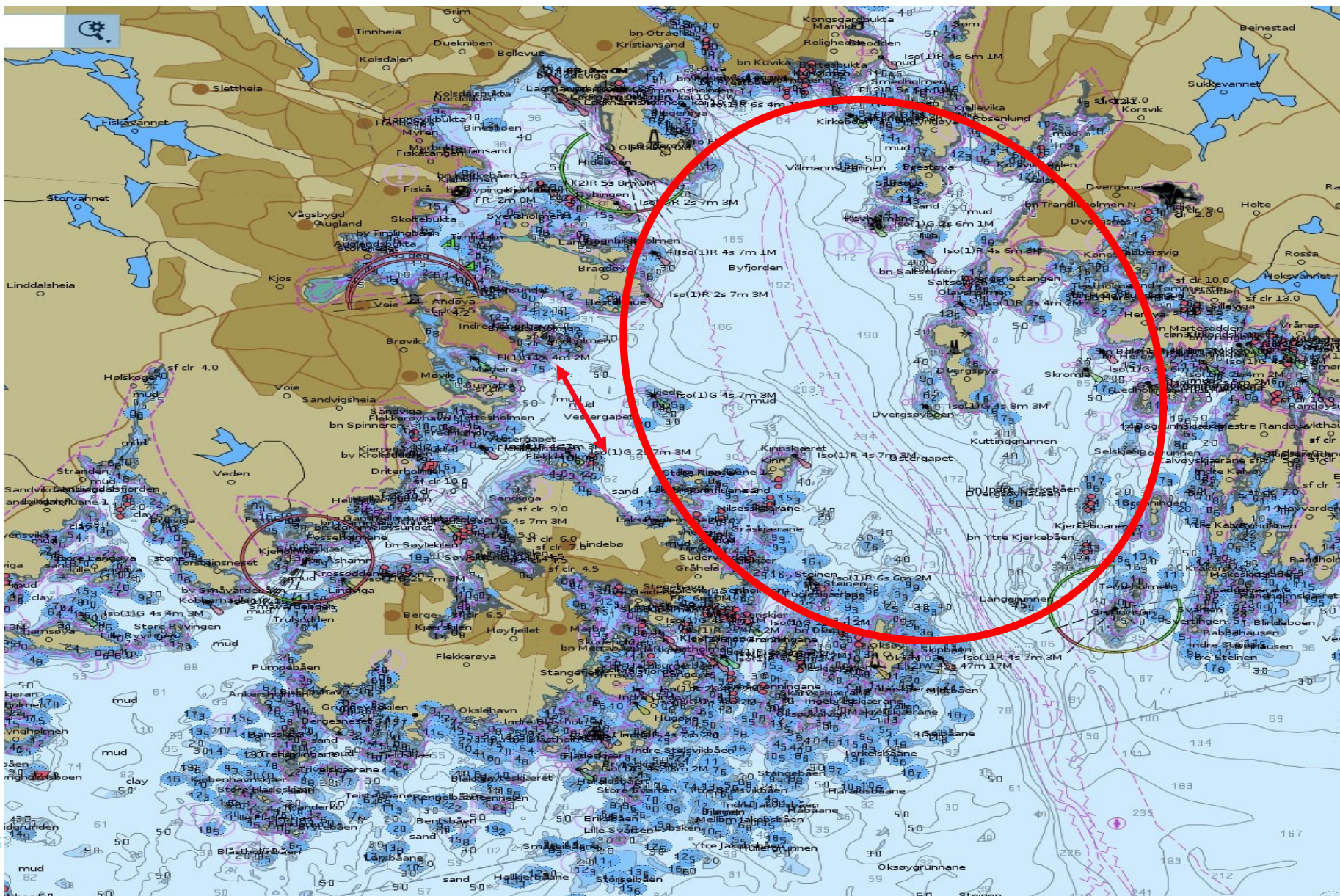
Report VHF ch 12 Departure (All lines in) Dybingen Vestergapet



HELLO
SAILOR!



Start line 12:00





West to east coordinates
 Blåstholmen
 $58^{\circ} 2.625' N$ $7^{\circ} 57.796' E$
 Måseskjer
 $58^{\circ} 2.610' N$ $7^{\circ} 53.626' E$
 Hanegalsbåen
 $58^{\circ} 2.223' N$ $7^{\circ} 55.413' E$



End of parade

tallshipsraceskristiansand.no





Questions ?



www.tallshipsraceskristiansand.no



tallshipsraceskristiansand.no



MET REPORT

Penny Tranter



Sail Training International

FORECAST OVERVIEW at 13:00 UTC – FRIDAY 1 August

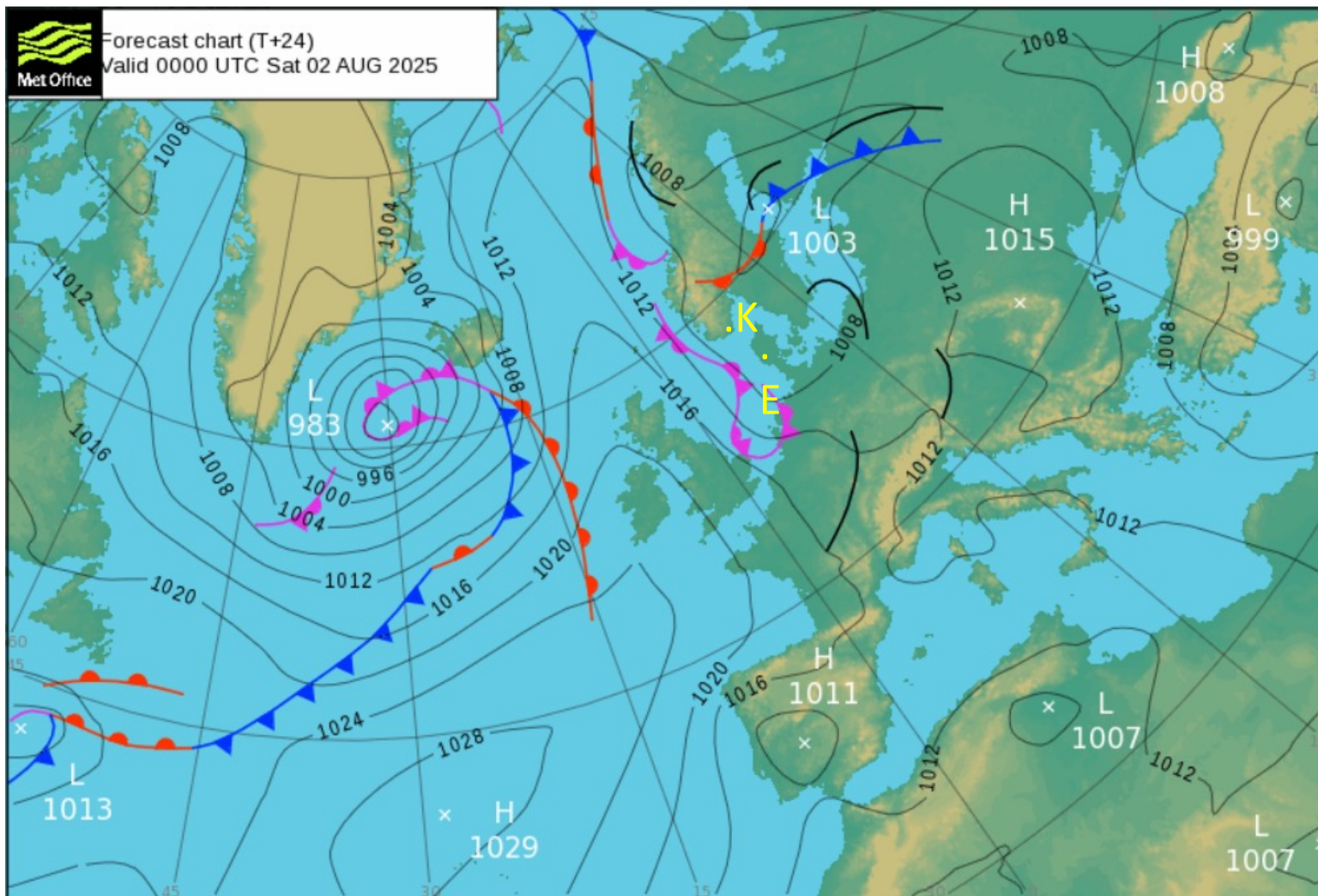
For Kristiansand, Norway to Esbjerg, Denmark

WEATHER PATTERN: Our current slow moving low dominates the start with lightish winds, but from late Monday, through Tuesday/Wednesday – Storm Floris, a major summer storm, is expected to bring very strong winds across the North Sea and southern Scandinavia

WATCHPOINTS:

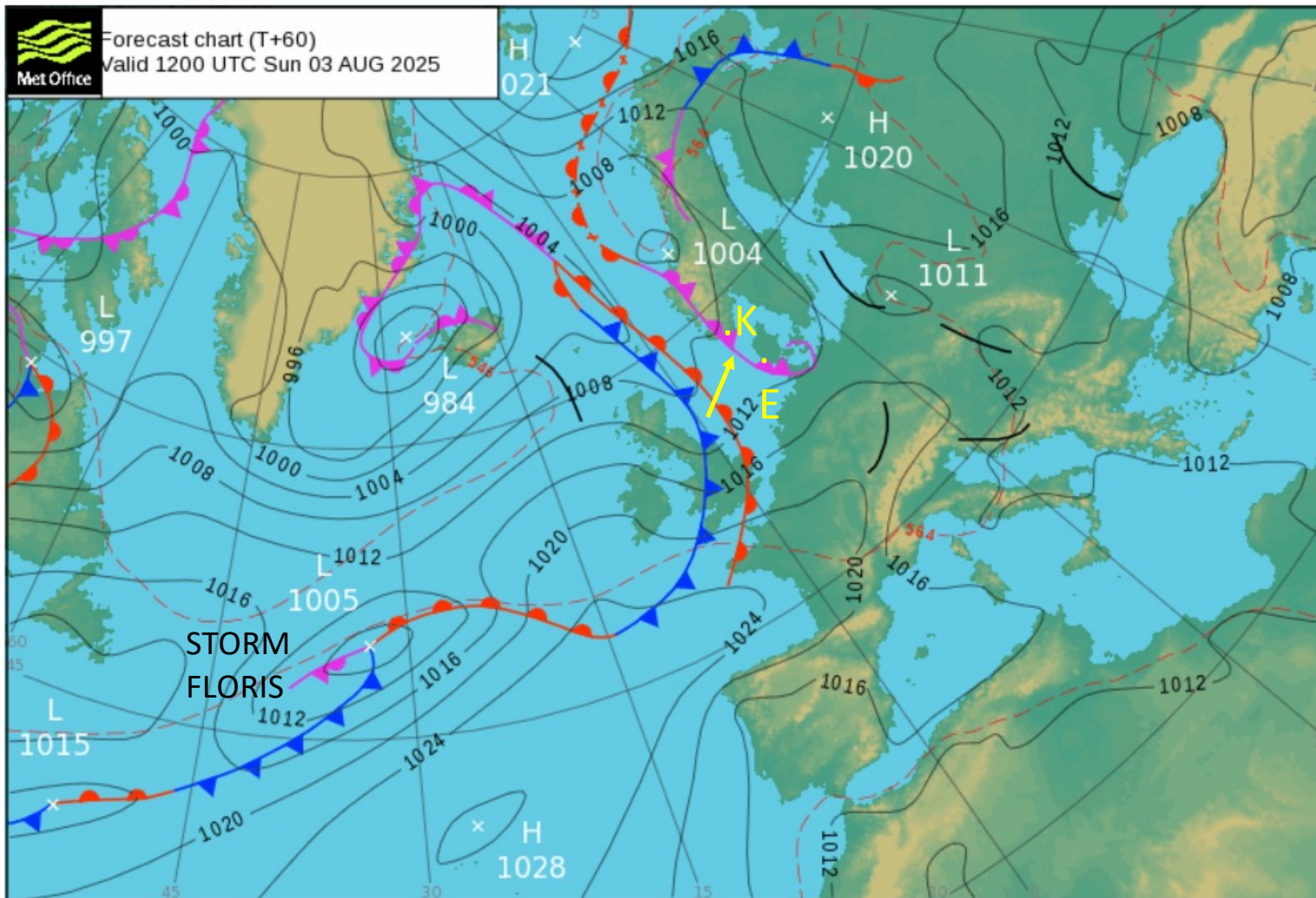
- START: Light/moderate S/SW/W winds but backing S/SE/E/NE after start
- OTHER WINDS: Strong and gusty SW/W/NW at times through to Monday morning. Storm Floris from Monday afternoon S then SW/W then NW through to end of Wednesday very strong, with gusts potentially over 50kts, even possibly 60kts on Tuesday. Seas 3.0 to 5.0m from late Monday through to early Thursday
- WEATHER: Rain/showers at times, sometimes heavy
- VISIBILITY: Mainly good/moderate, but dipping to poor in any heavier rain



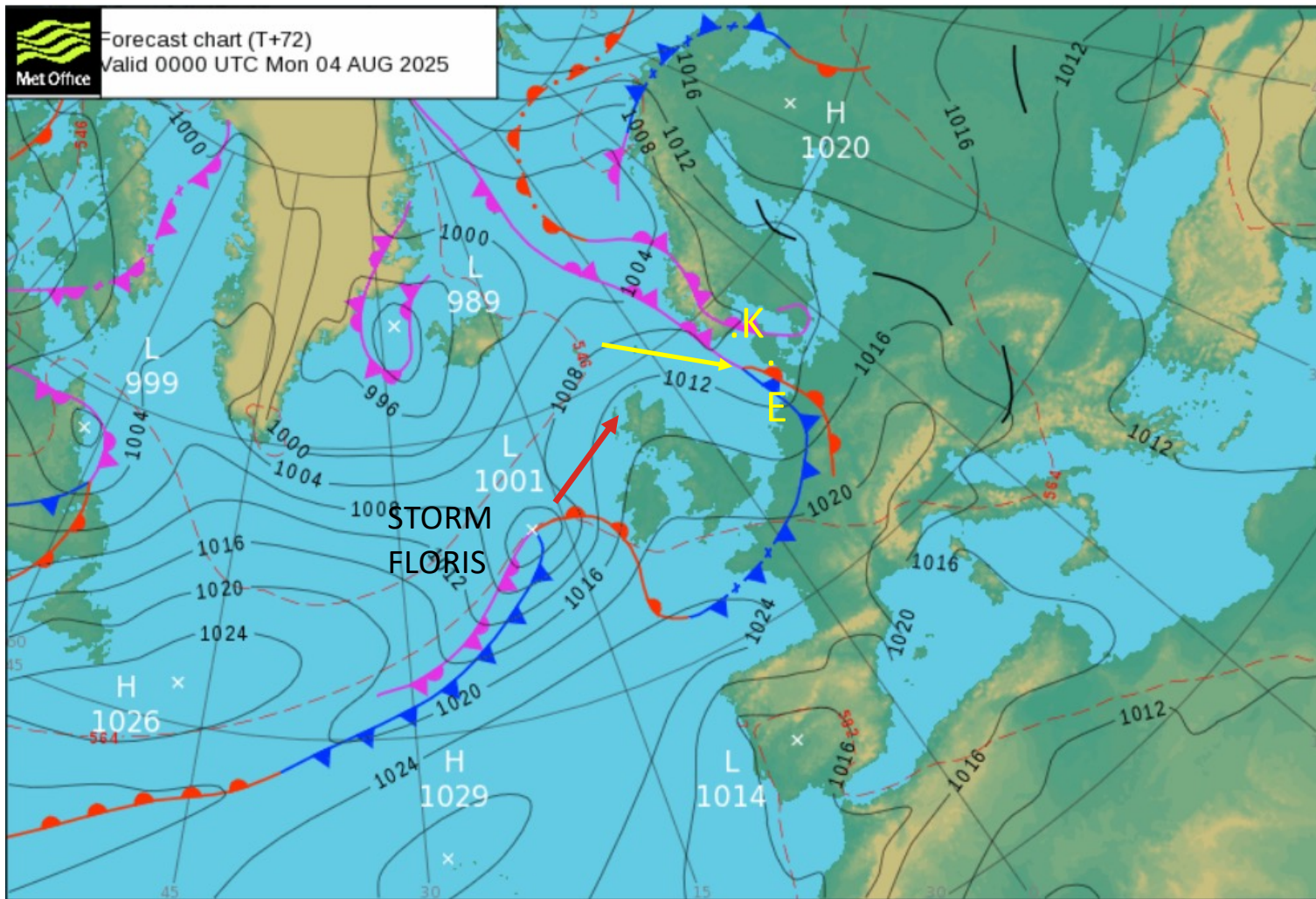


Sail Training International

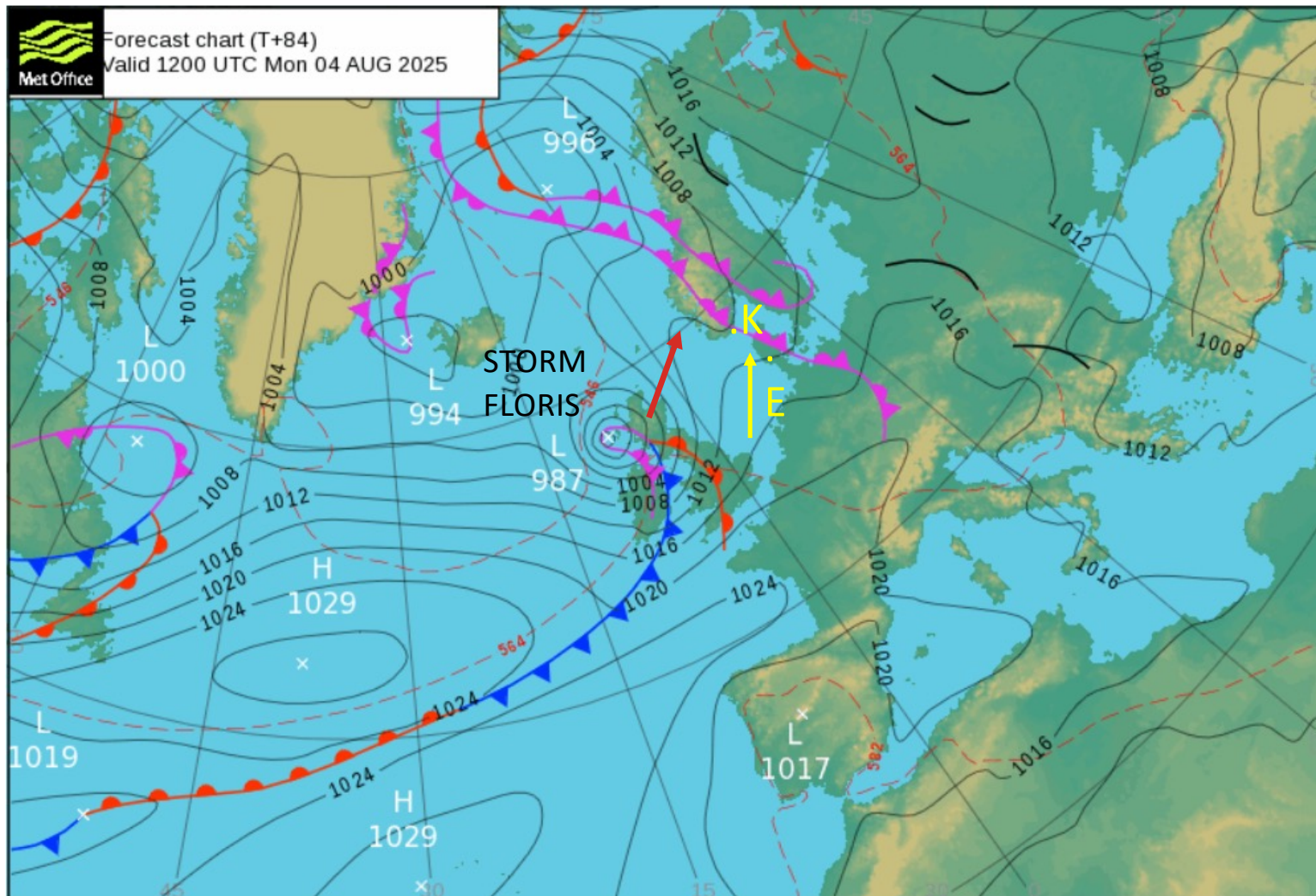


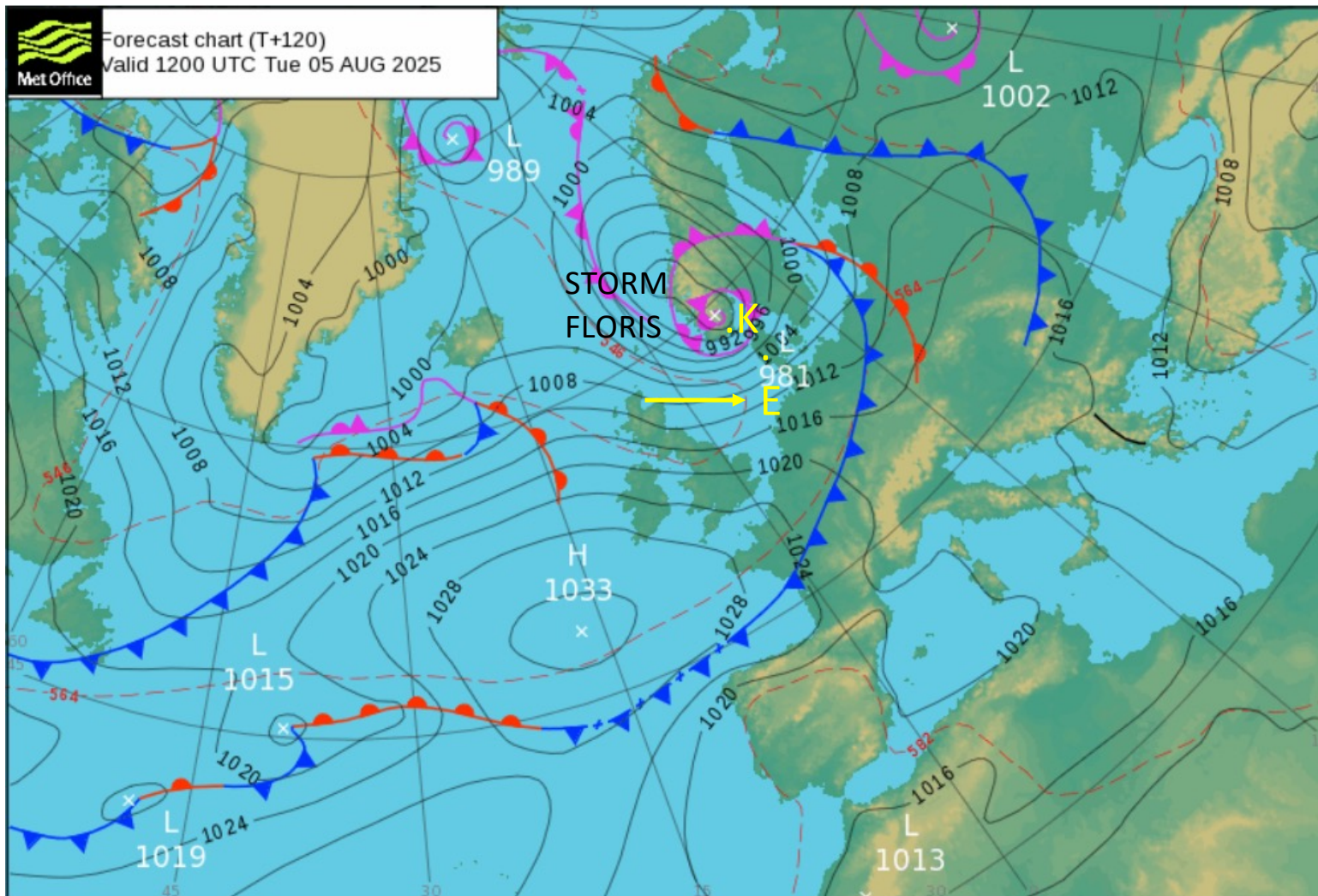


Sail Training International



Sail Training International





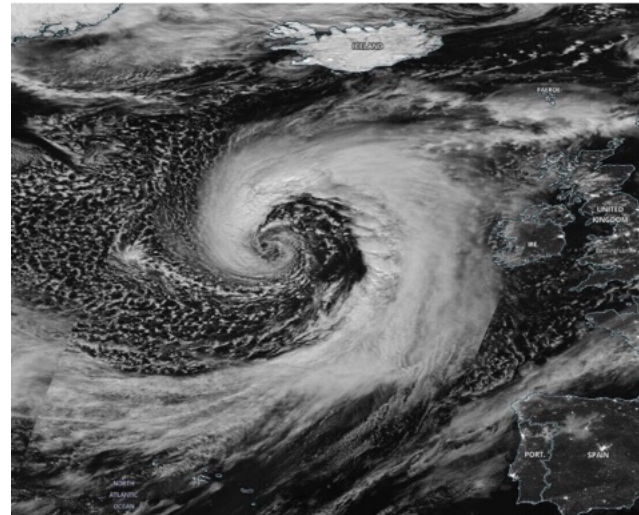
Sail Training International

Unseasonably windy from late Monday through Tuesday and into Wednesday due to Storm Floris

Not quite a 'weather bomb' as central pressure predicted to fall about 20hPa/mb in 24 hours, need 24 hPa/mb central pressure drop to be called a 'weather bomb' (technically known as 'rapid or explosive cyclogenesis')

Very unusual for early August

Direction and movement of low centre corresponds to the wind direction and speed in the warm sector – in this case NE at about 40kt



Deep Atlantic low cloud signature from a visual satellite photo



Sail Training International

START



Sail Training International

START

Our current complex slow moving low centre is expected to be near by

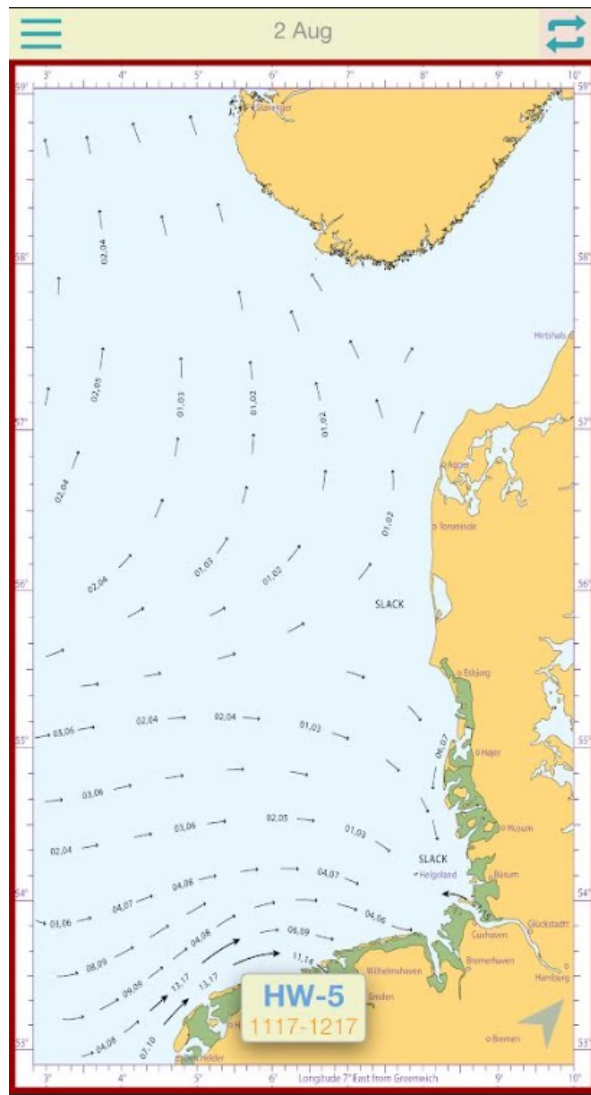
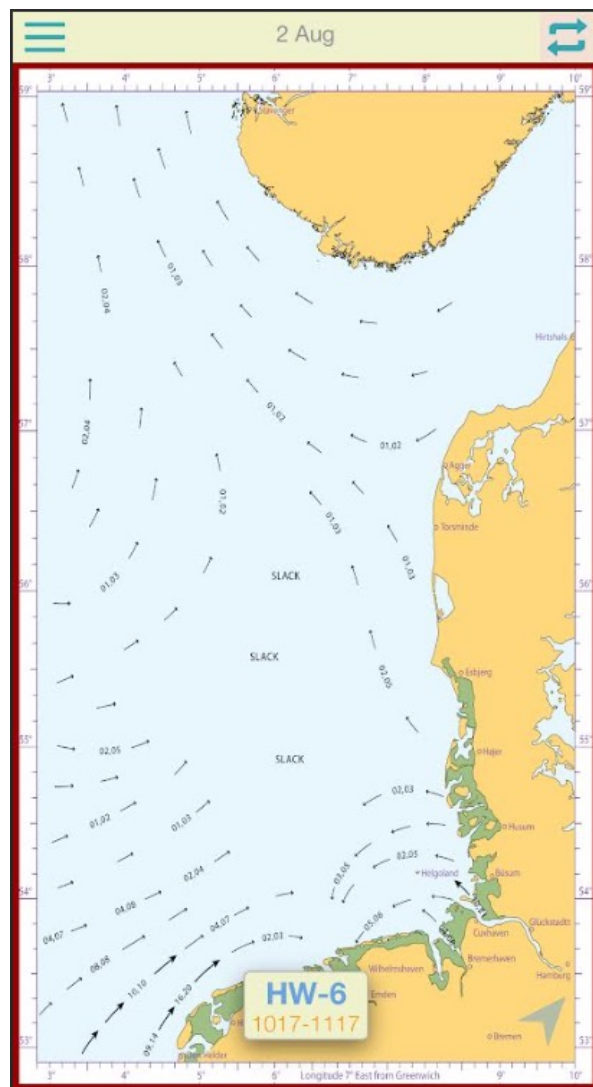
- WINDS: Currently moderate forecast confidence with S/SW 5-12kt, gusts 12-16kt, but could be up to 15kt in a few places, with gusts up to 20-25kt
- SEA STATE: Waves 0.1-0.4m 1-3sec, Swell W 0.3-0.8m, 4-6sec
- WEATHER: Mainly cloudy with outbreaks of rain, sometimes heavy
- VISIBILITY: Mainly good/moderate, but could dip down to poor in heavier rain



Sail Training International

TIDES

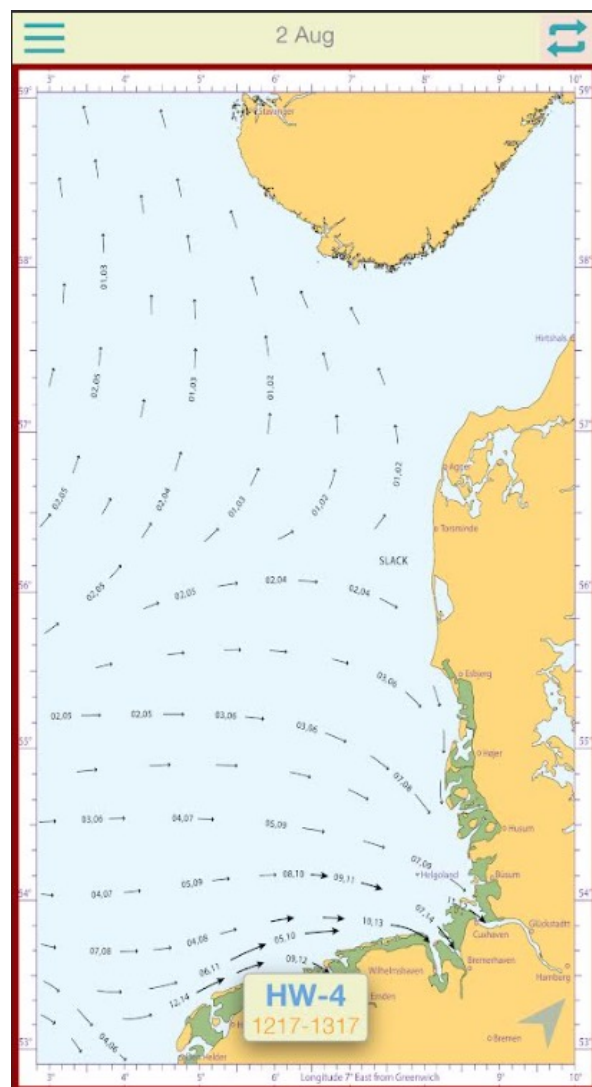
In UTC
(close
to
neaps)



Sail Training International

TIDES

In UTC
(close
to
neaps)



Sail Training International

In UTC
(close
to
neaps)



Sail Training International

SATURDAY 18:00 UTC (ECMWF)

Winds: S/SE 8-12kt, gusts 12-20kt, but very different further offshore
NW 15-25kt, gusts 25-35kt, possibly 40kt

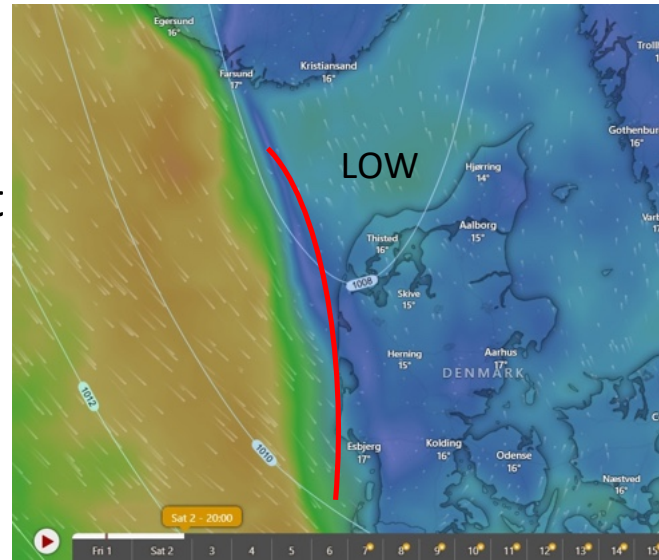
Wind waves: 0.1-0.4m, 2sec, further offshore 0.5-2.5m

Swell: W 0.1-1.5m, 4-7sec

Weather: Rain, heavy at times

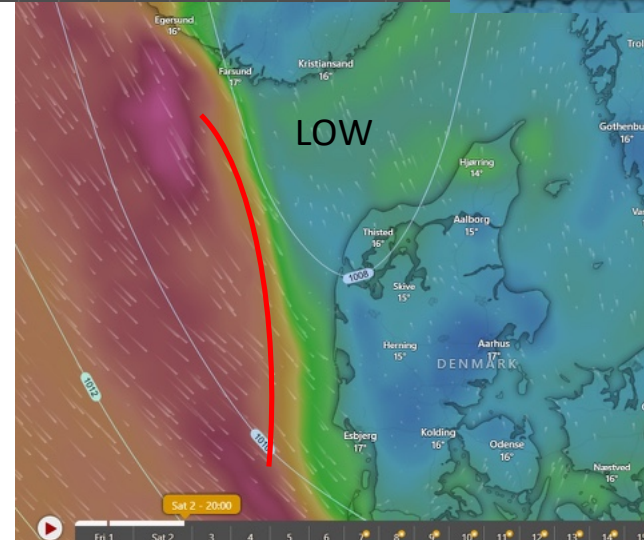
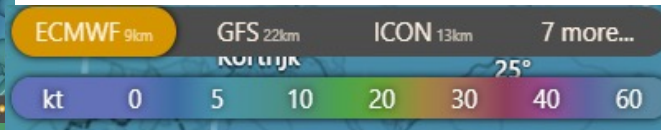
Visibility: Good/moderate, poor in heavy rain

Dew point: 14-15C SST: 17-19C



Wind: mean in kt

Front moving east



Wind: gusts in kt



Sail Training International

SST = Sea Surface Temperature

SUNDAY 00:00 UTC (ECMWF)

Winds: SE 8-12kt, gusts 12-16kt, but very different further offshore
NW 15-25kt, gusts 25-35kt, possibly 40kt

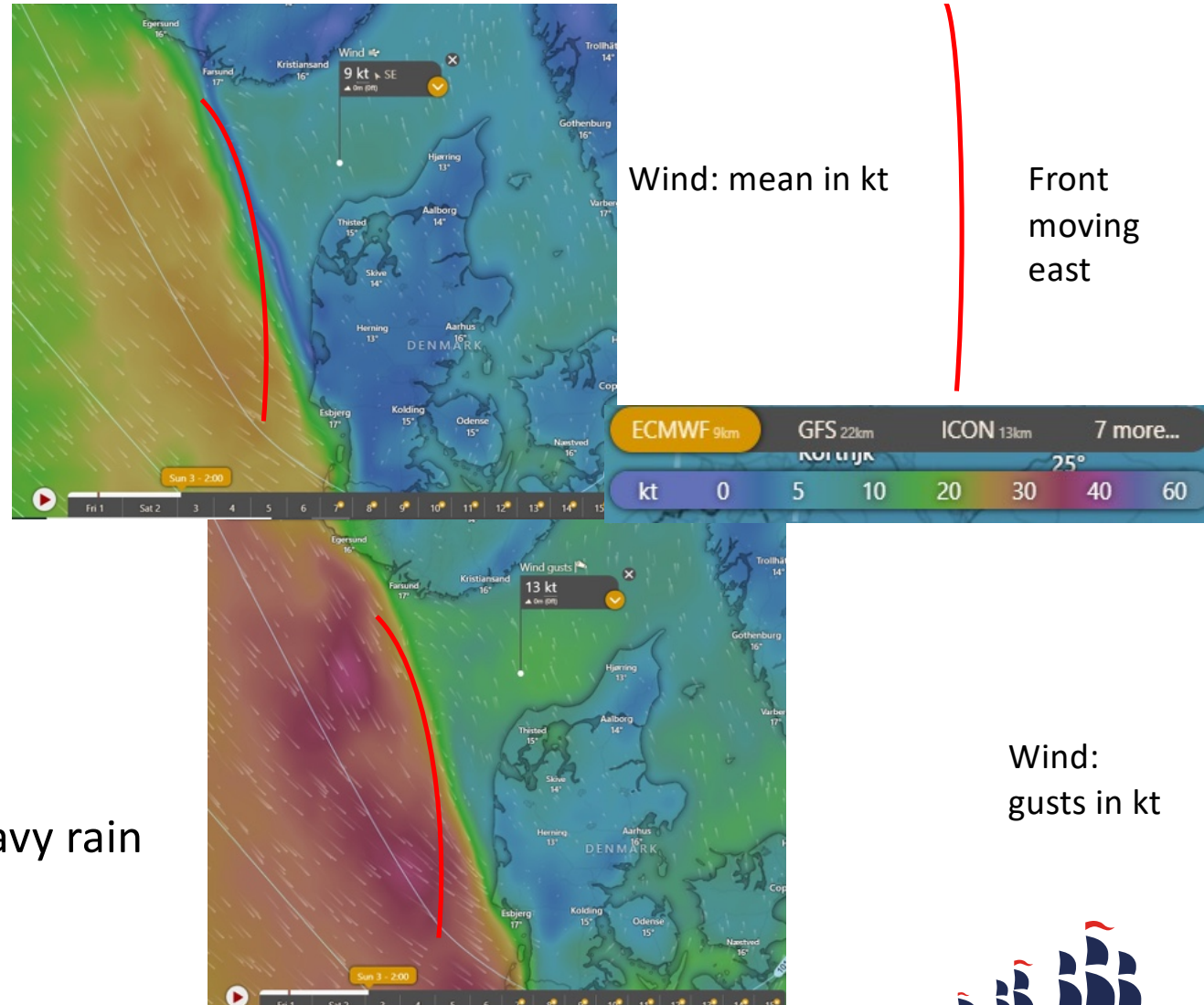
Wind waves: 0.1-0.4m, 2sec, further offshore 0.5-2.5m

Swell: W 0.1-1.5m, 4-7sec

Weather: Rain, heavy at times

Visibility: Good/moderate, poor in heavy rain

Dew point: 14-16C SST: 17-19C



Sail Training International

SST = Sea Surface Temperature

SUNDAY 12:00 UTC (ECMWF)

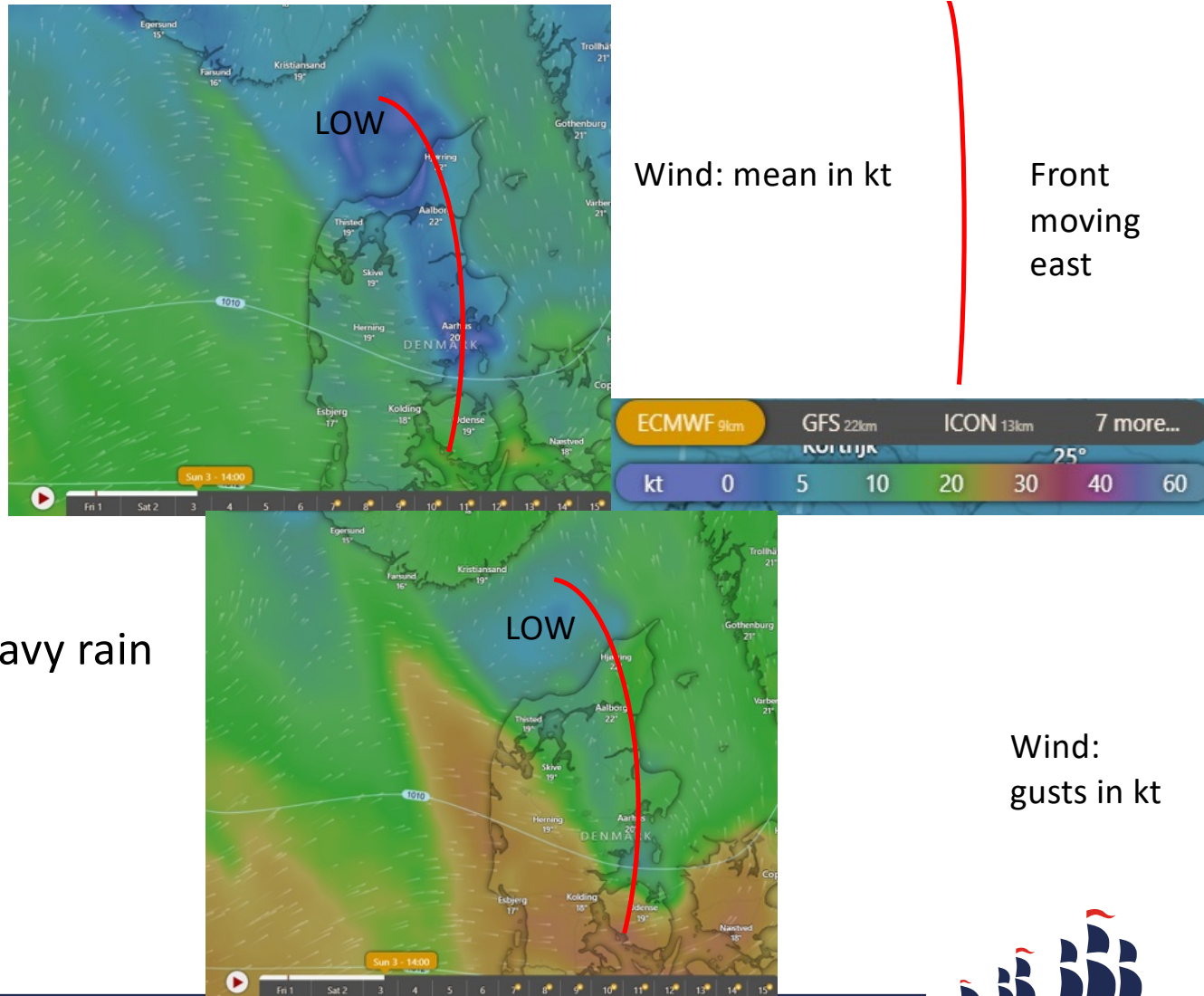
Winds: W/NW 12-18kt, gusts 20-30kt
Lots of lulls and gusts

Wind waves: 0.5-1.0m, 3-5sec
Swell: W/NW 0.8-1.5m, 3-5sec

Weather: Rain, heavy at times

Visibility: Good/moderate, poor in heavy rain

Dew point: 13-15C SST: 17-19C



SST = Sea Surface Temperature



Sail Training International

MONDAY 00:00 UTC (ECMWF)

Winds: Ahead of squally front
S/W 8-15, gusts 12-25, on and behind
Squally front W/NW 15-25kt, gusts
25-35kt, but possibly 40kt

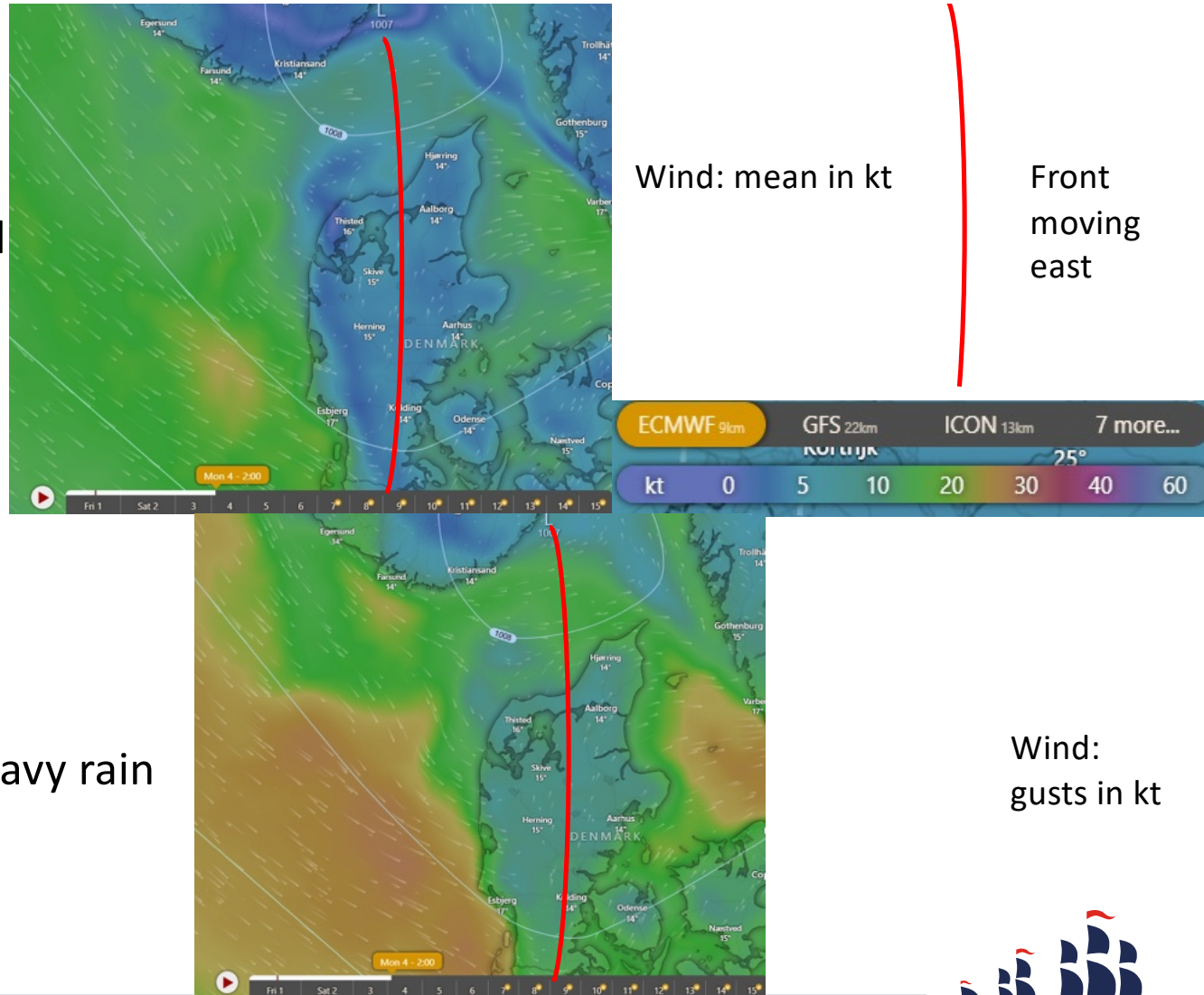
Wind waves: 0.8-1.4m, 3-5sec

Swell: SW/W 0.3-0.8m, 3-5sec

Weather: Rain, heavy at times

Visibility: Good/moderate, poor in heavy rain

Dew point: 14-16C SST: 17-19C



SST = Sea Surface Temperature



Sail Training International

MONDAY 06:00 UTC (ECMWF)

Winds: W/NW 15-20kt, gusts 20-30kt,
increasing at times 18-25kt,
gusts 25-35kt, possibly 40kt

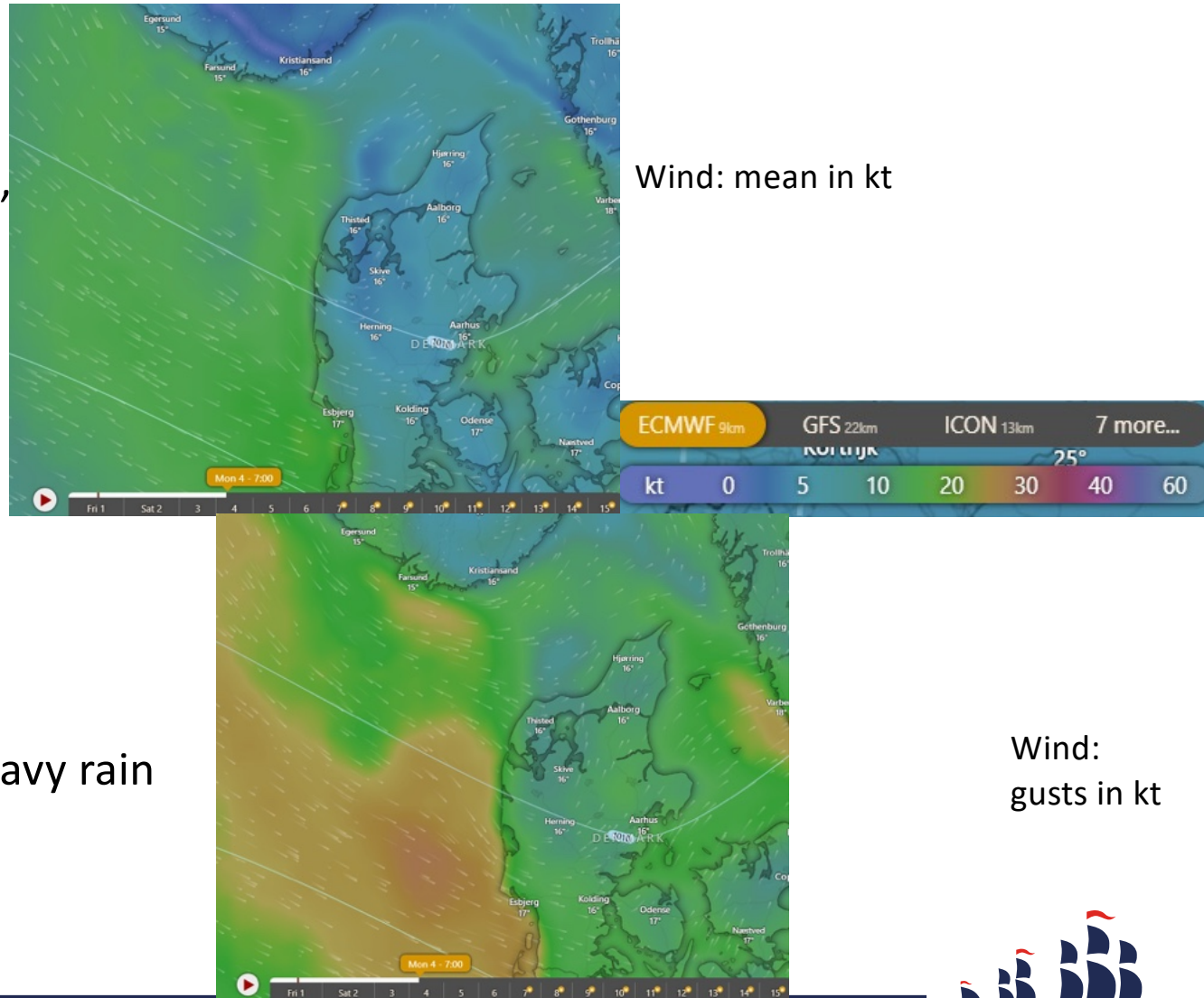
Wind waves: 0.3-2.0m, 4sec, but up
to 2.5m, 6sec in stronger winds

Swell: SW/W 0.1-1.5m, 6-7sec

Weather: Rain, heavy at times

Visibility: Good/moderate, poor in heavy rain

Dew point: 12-15C SST: 17-19C



SST = Sea Surface Temperature



Sail Training International

MONDAY 12:00 UTC (ECMWF)

Winds: SW/W 15-20kt, gusts 17-22kt,
increasing from the west S/SW
20-30kt, gusts 30-40kt

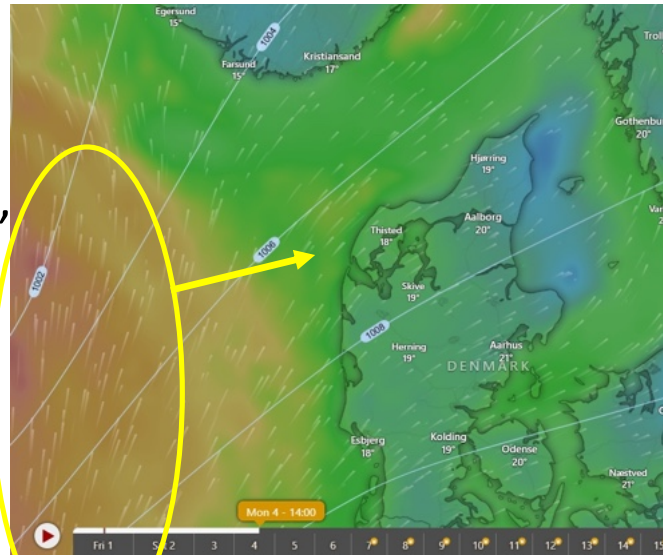
Wind waves: 0.8-1.2m, 4sec,
Swell: SW/SE 0.6-0.9m, 5-7sec

Weather: Rain, heavy at times

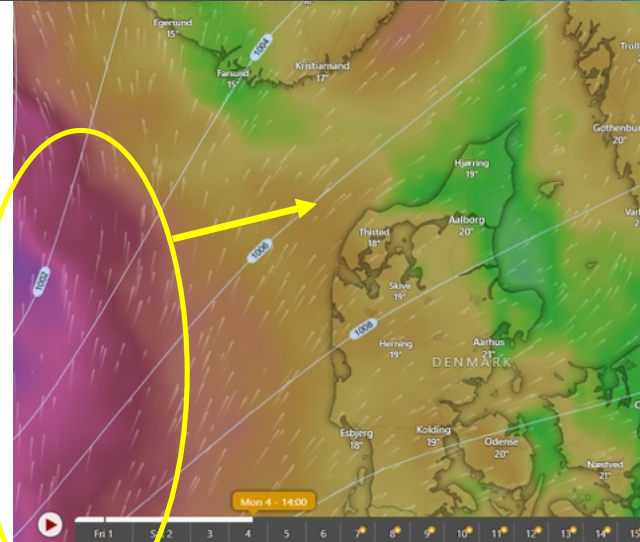
Visibility: Good/moderate, poor in heavy rain

Dew point: 13-14C SST: 17-19C

Area of strong winds



Wind: mean in kt



Wind:
gusts in kt

SST = Sea Surface Temperature



Sail Training International

MONDAY 18:00 UTC (ECMWF)

Winds: SW/W 22-35kt, gusts 35-50kt

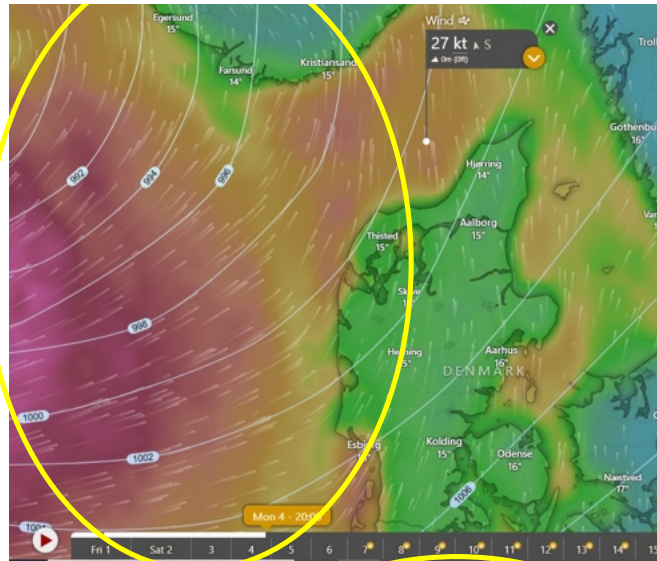
Wind waves: 1.5-4.5m, 5-8sec,
Swell: VAR 0.2-0.5m, 3-6sec

Weather: Rain, heavy at times

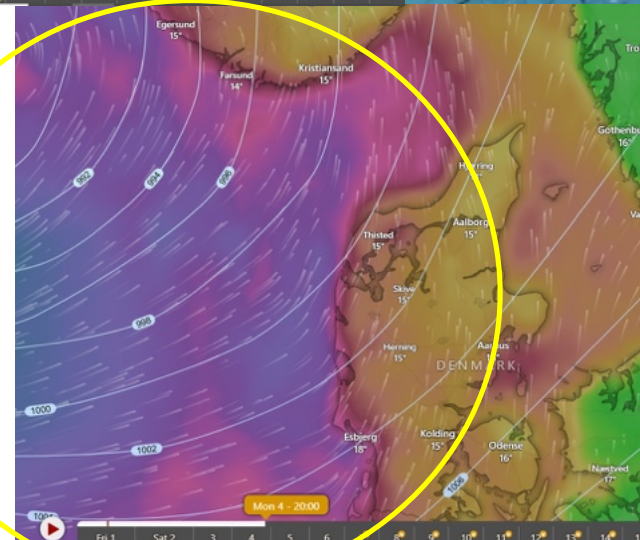
Visibility: Good/moderate, poor in heavy rain

Dew point: 12-16C SST: 17-19C

Area of very strong winds



Wind: mean in kt



Wind:
gusts in kt

SST = Sea Surface Temperature



Sail Training International

TUESDAY 12:00 UTC (ECMWF)

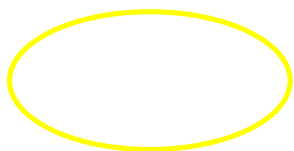
Winds: W/WNW 28-40kt, gusts up to 45-55kt, potentially 60kt

Wind waves: 2.5-5.0m, 8/9sec,
Swell: SW/SE 0.1-0.2m, 3-5sec

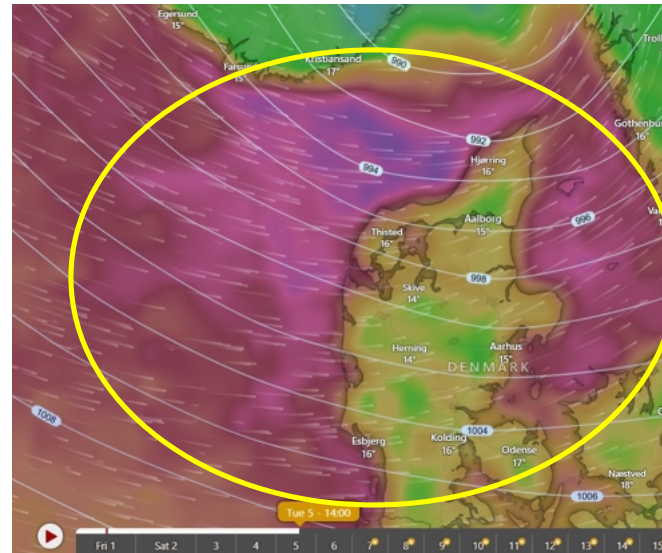
Weather: Rain, heavy at times

Visibility: Good/moderate, poor in heavy rain

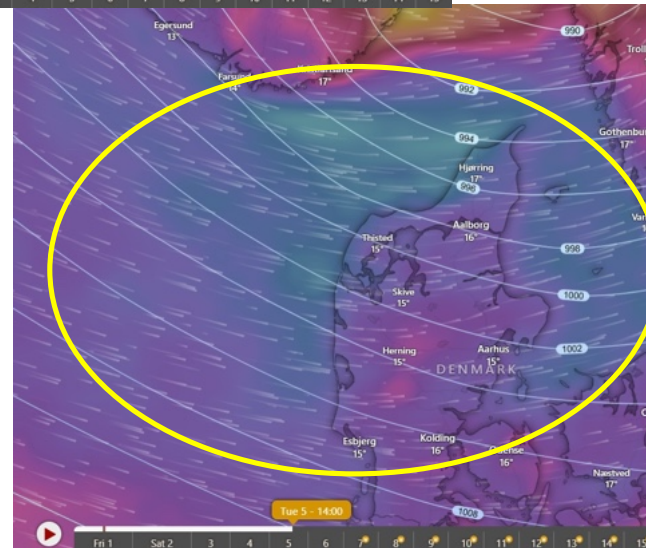
Dew point: 11-12C SST: 17-19C



Area of very strong winds



Wind: mean in kt



Wind:
gusts in kt

SST = Sea Surface Temperature



Sail Training International

THANK YOU



Sail Training International

RACING RULES



Sail Training International

RACING RULES UPDATES

FUNDAMENTAL RULE VII. Environmental Responsibility

Tall Ships Races International Limited strongly encourages all activities which minimise any negative impact and do not significantly harm the environment during their events.

17.2 **Gates** between two positions may be used as marks of the course. A vessel must cross the Gate Line from the direction of the last mark and must record the time when any part of her hull or equipment crosses this line.
Note The Gate Line may be used as the Finish Line (see Rule 19) if the course needs to be shortened.

17.3 **Exclusion Zones** such as Traffic Separation Schemes and other restricted areas may be published as marks of the course. These areas should not be entered unless there are safety concerns, which should be recorded on the Race Declaration (Rule 3.3)



RACING RULES UPDATES

RACE DECLARATIONS:

3.3 Declarations

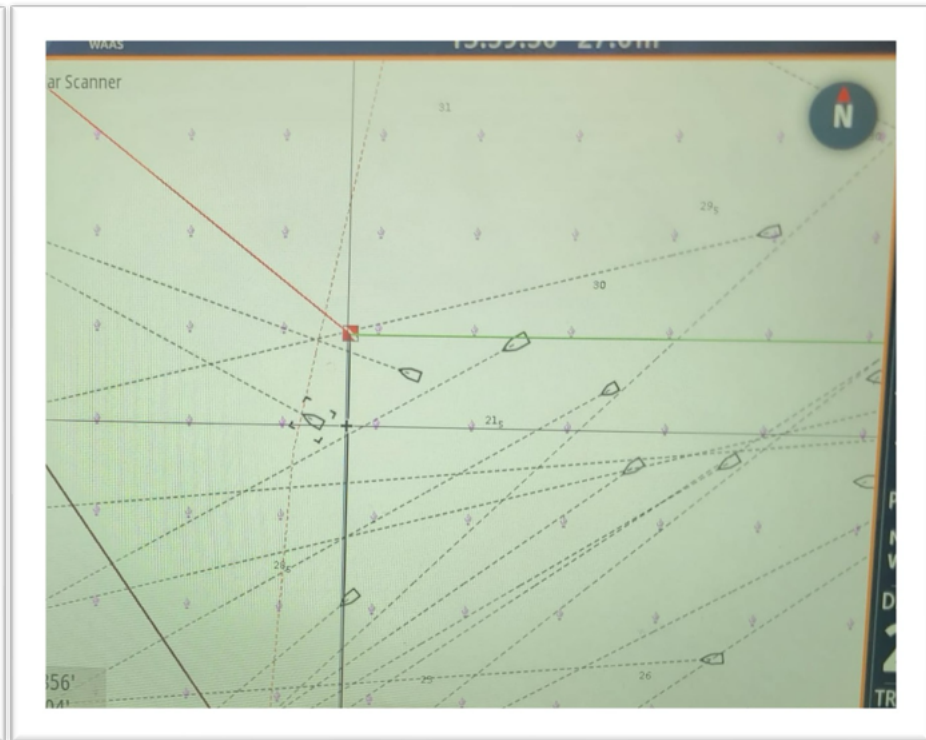
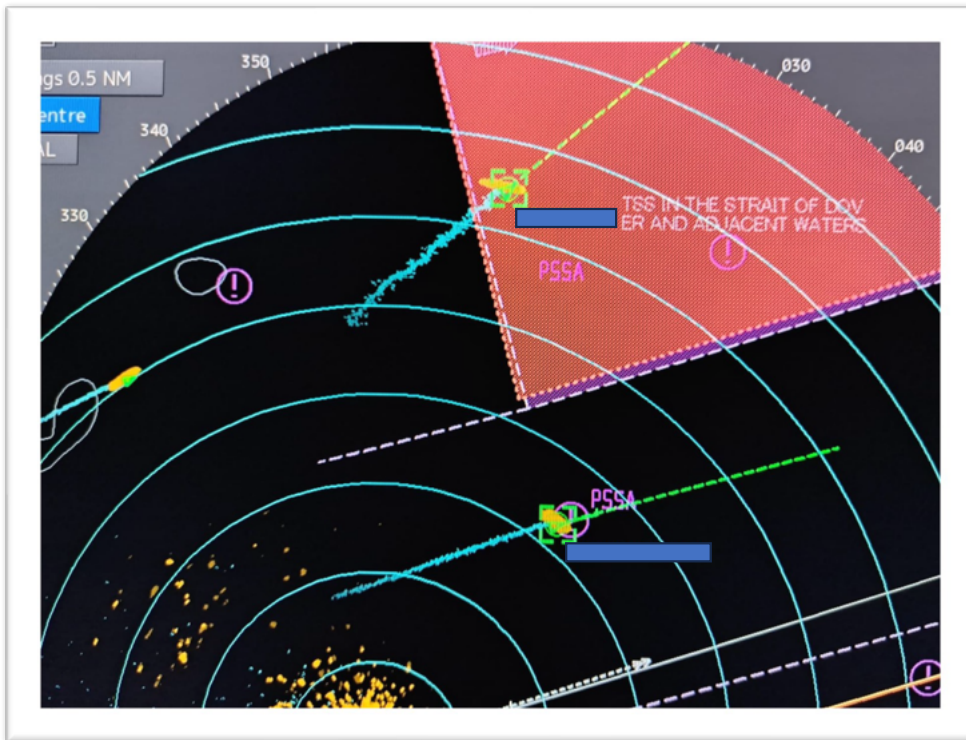
3.3.1 A completed Race Declaration shall be completed on the Gateway as soon as the vessel berths at the Finish Port. Failure to do so will result in the vessel receiving a Standard Time Penalty (see Rule 15.2) or being treated as having failed to complete the course.

3.3.2 Any contravention, however trivial, of any of these Racing Rules, the Sailing and Communication Instructions or any contravention of the COLREGS must be recorded on the Race Declaration.



Sail Training International

FAIR PLAY FIRST



Sail Training International

RACE START



Sail Training International

RACE START

STARTING SIGNALS & TIMES 02 AUGUST

14:00 UTC CLASS A
14:30 UTC CLASS B
14:45 UTC CLASS C/D

- RACE START MAY BE POSTPONED
- PLEASE STBY ON VHF 77

RACE START AREA:

58° 00.0' N
008° 09.0' E



RACE START VESSEL
KV Nornen

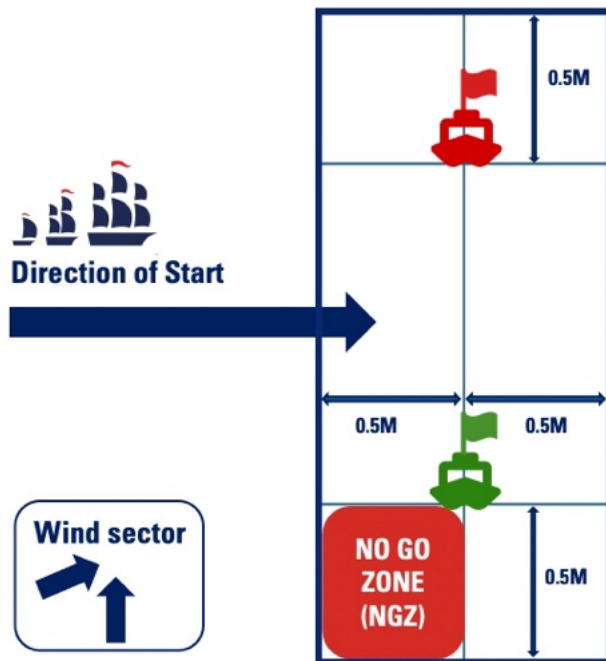


RACE START VESSEL
KBR Oтра



RACE START

Start Line configuration - STARBOARD tack



NO ENTRY
into **START BOX**
until **20 minutes**
before your
Class start

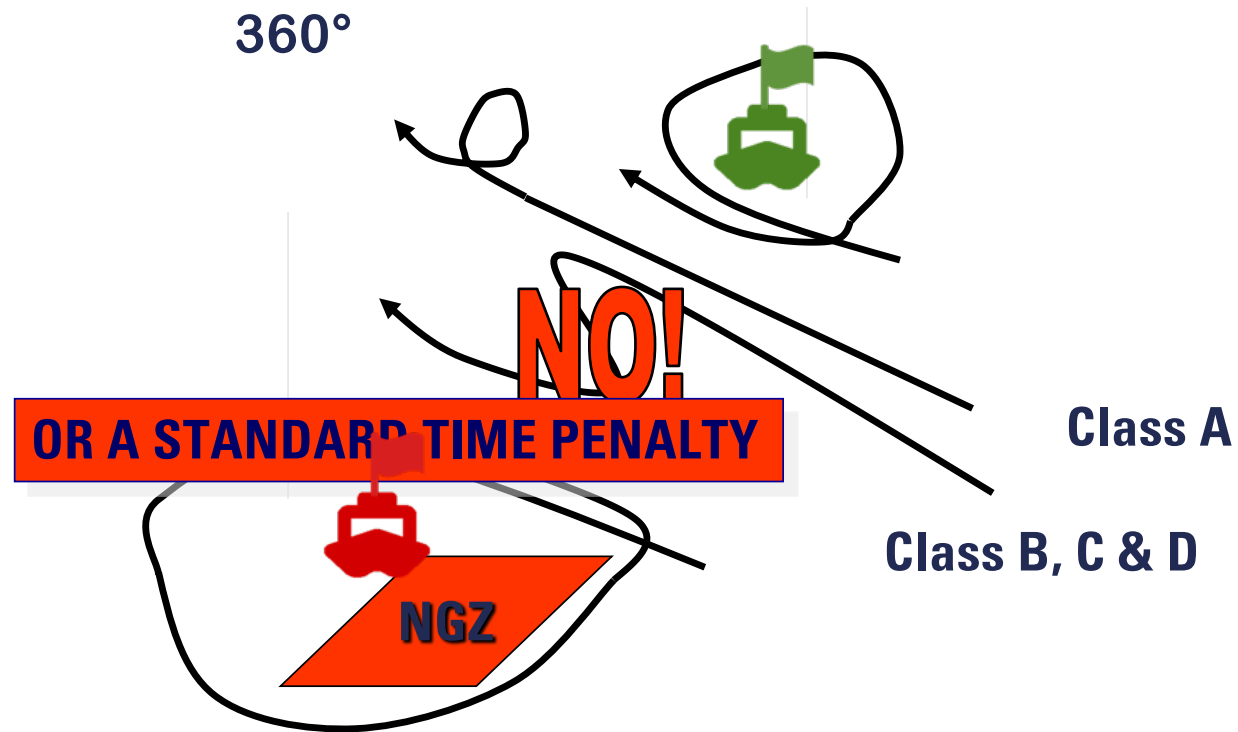
RACE START BASICS:

- Downwind start
- VHF 77
- Don't be early!
- CLASS A – 20 MIN START GATE
- CLASS A – RECORD YOUR INDIVIDUAL START TIME
- **PLEASE STAY AWAY FROM THE START BOX UNTIL 20 MINS BEFORE START SIGNAL FOR THEIR CLASS**
- **ENGINE MUST NOT BE USED LESS THAN 20 MINS BEFORE THE START (UNLESS MORE THAN 1NM FROM THE START LINE)**

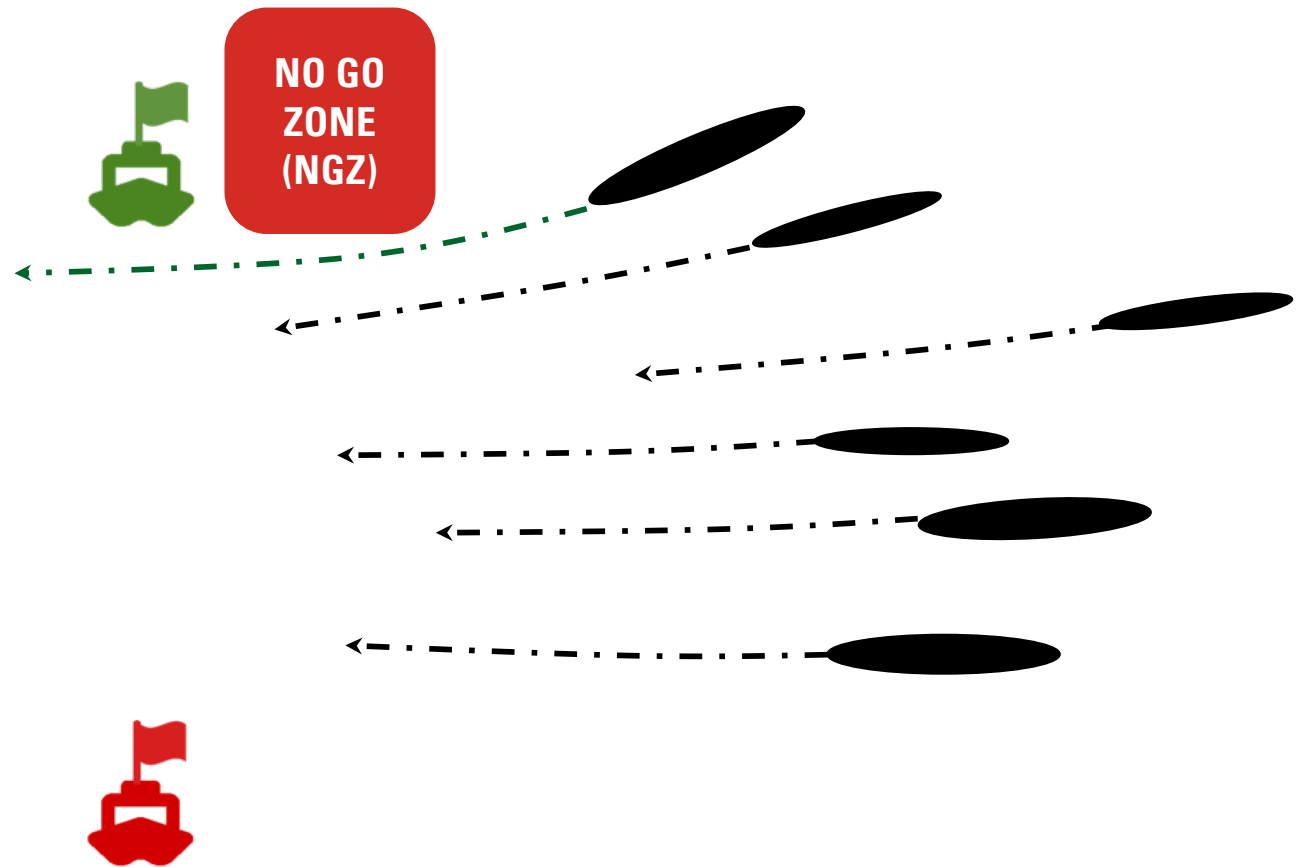


RACE START

Rule 9 – Recalls & Crossing the Start Line early

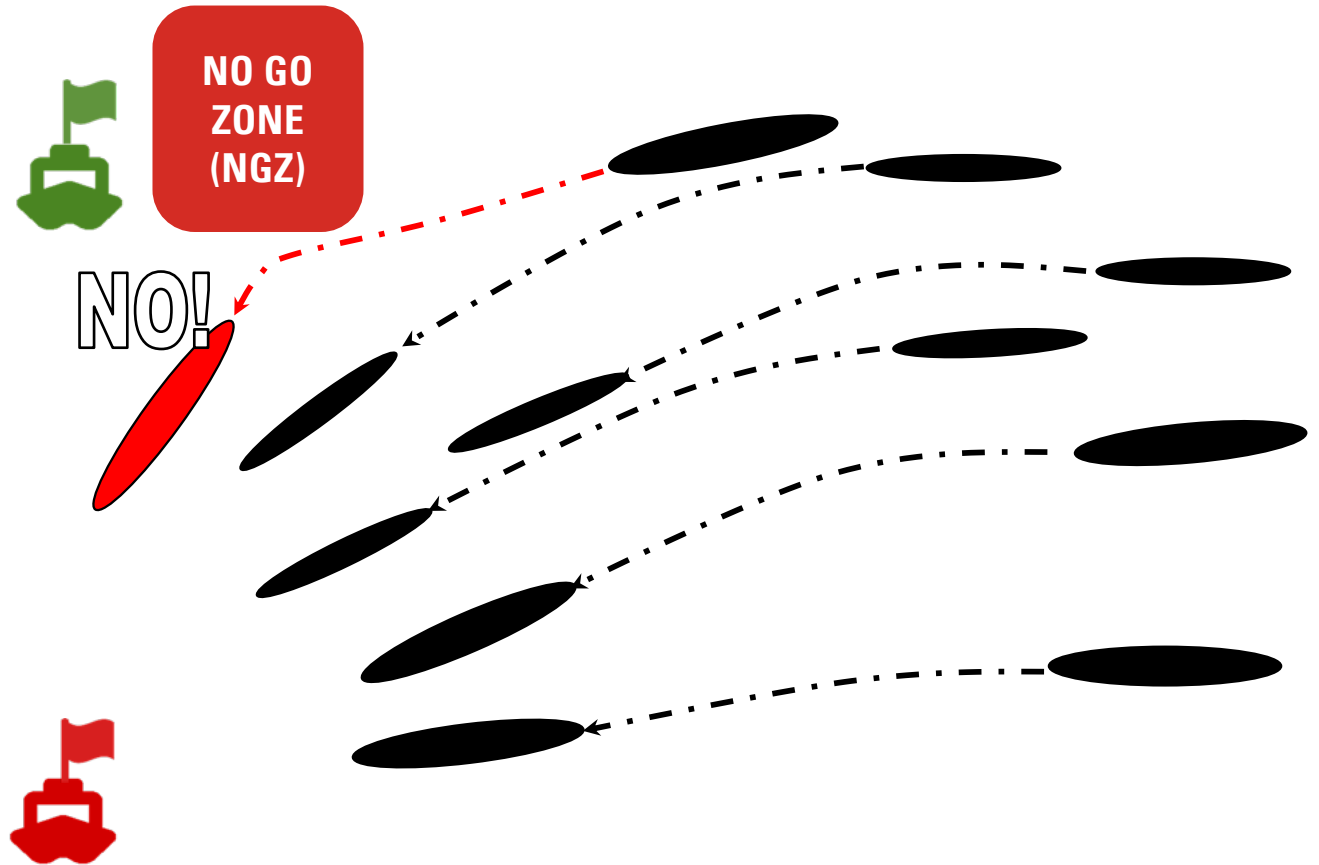


RACE START



Rule 9 – Recalls & Crossing the Start Line early

RACE START



Rule 9 – Recalls & Crossing the Start Line early

RACE COURSE



Sail Training International

RACE COURSE

RACE 4: KRISTIANSAND - ESBJERG

Start Area

58° 00.0' N 008° 09.0' E

Finish Line

| | | |
|---------------|-------------|--------------|
| Port end | 55° 31.5' N | 007° 22.5' E |
| Starboard end | 55° 31.5' N | 007° 13.7' E |

Time Limits

| | |
|-----------|--------------------|
| Class A | 04 August 0000 UTC |
| Class B | 04 August 0030 UTC |
| Class C&D | 04 August 0045 UTC |



Sail Training International

EXCLUSION ZONES

All Traffic Separation Schemes, Wind Farms, and Oil/Gas Facilities are excluded from the race course and must be treated as NO-GO ZONES.



Sail Training International

RACE COMMUNICATIONS

Mal Riley



Sail Training International

RACE COMMUNICATIONS

Your YB tracker will transmit every 60 minutes.

Additionally within 2nm of the Starting Area, WP1, WP2 and Finish Line YB tracker will transmit every 10 minutes.



HOW TO FOLLOW:

<https://sailtraininginternational.org/yb-tracking-2025/>



Sail Training International

RACE COMMUNICATIONS

COMMS OFFICERS: Malcom RILEY & Signe ZIGELA

CALL SIGN 'RACE CONTROL'

email: commsofficer1@mailasail.com

Primary Working Frequency VHF CH77

Secondary Working Frequency HF 4146

Race Director (WHATSAPP, TEXT MESSAGE & CALLS, GARMIN, IRIDIUM): + 48 501 025 799

Please make a test today!



Sail Training International

RACE COMMUNICATIONS

2 Schedules per day

| | |
|-------------------------|--------------------|
| TEST VHF communications | 0758 and 1658 UTC |
| Sat communications | 0800 and 1700 UTC |
| VHF communications | 0815 and 1715 UTC |
| HF 4146 communications | 0915 and 1815 UTC |
| First Comms Schedule | 0815 UTC 03 AUGUST |



Sail Training International

RACE COMMUNICATIONS

The communications officer will call each vessel as listed in the schedule.

Pass your Lat and Long when called: e.g: 55 27 N 08 26 W/E (just degrees & minutes)

The communications officer will pass back your race placings (Class and Overall)

Any relevant weather information will be broadcast at the end of the schedule , along with any other race related information.

Please maintain **Radio Silence** during the schedules.



Sail Training International

RACE COMMUNICATIONS

COMMS VESSEL – DAR MŁODZIEŻY

Any vessel not able to contact 'Race Control' by Radio can use any of the alternative methods:

- SMS to Race Director: +48 501 025 799
- Relay through another vessel (competing or commercial)
- Any other method



Sail Training International

RACE COMMUNICATIONS

FINISHING THE RACE:

Pass your Finish Time **(to the nearest second)**, future intentions, retirements and ETA for ESBJERG to Race Control.

FINISH AT SEA – pass your finish position **(detailed coordinates)** at your Class Time Limit to Race Control.

Remain on communications schedule until stood down by RACE CONTROL

THIS INCLUDES VESSELS THAT HAVE RETIRED AND VESSELS THAT HAVE FINISHED



Sail Training International

RACE COMMUNICATIONS

NO REPORTS!

If ONE Report Missed

- *Noted and STP may be awarded*

If TWO Reports Missed

- *Concerned and another STP may be awarded*

If THREE Reports Missed

- *another STP may be awarded and may be DSQ*

MRCC may be informed and SAR considered



Sail Training International

ARRIVAL TO ESBJERG



Sail Training International

Michael Fries
Harbour Master Port Esbjerg



- **Approaching**
- **Arrival**
- **Berthing**
- **In-port**
- **Departure**



Pilot and tugs according to Captains Manual

PE and TSR Ops center

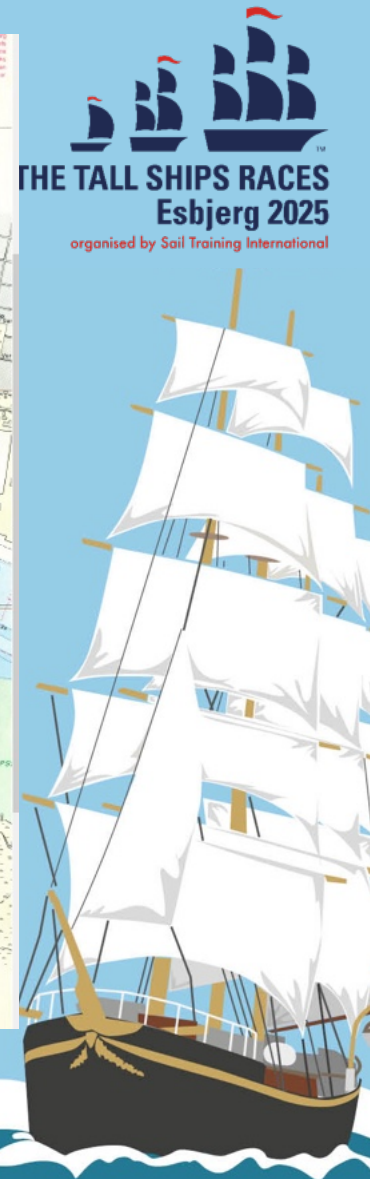
ETA to Esbjerg Port Control
VHF CH 12
1 hour before entering the Fairway



Position update TSR Ops-center
VHF CH 12

Entering the
fairway

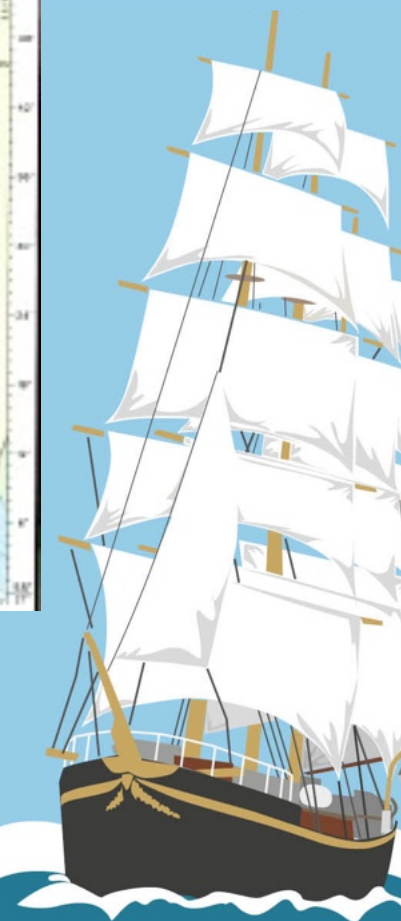
Passing the
breakwaters



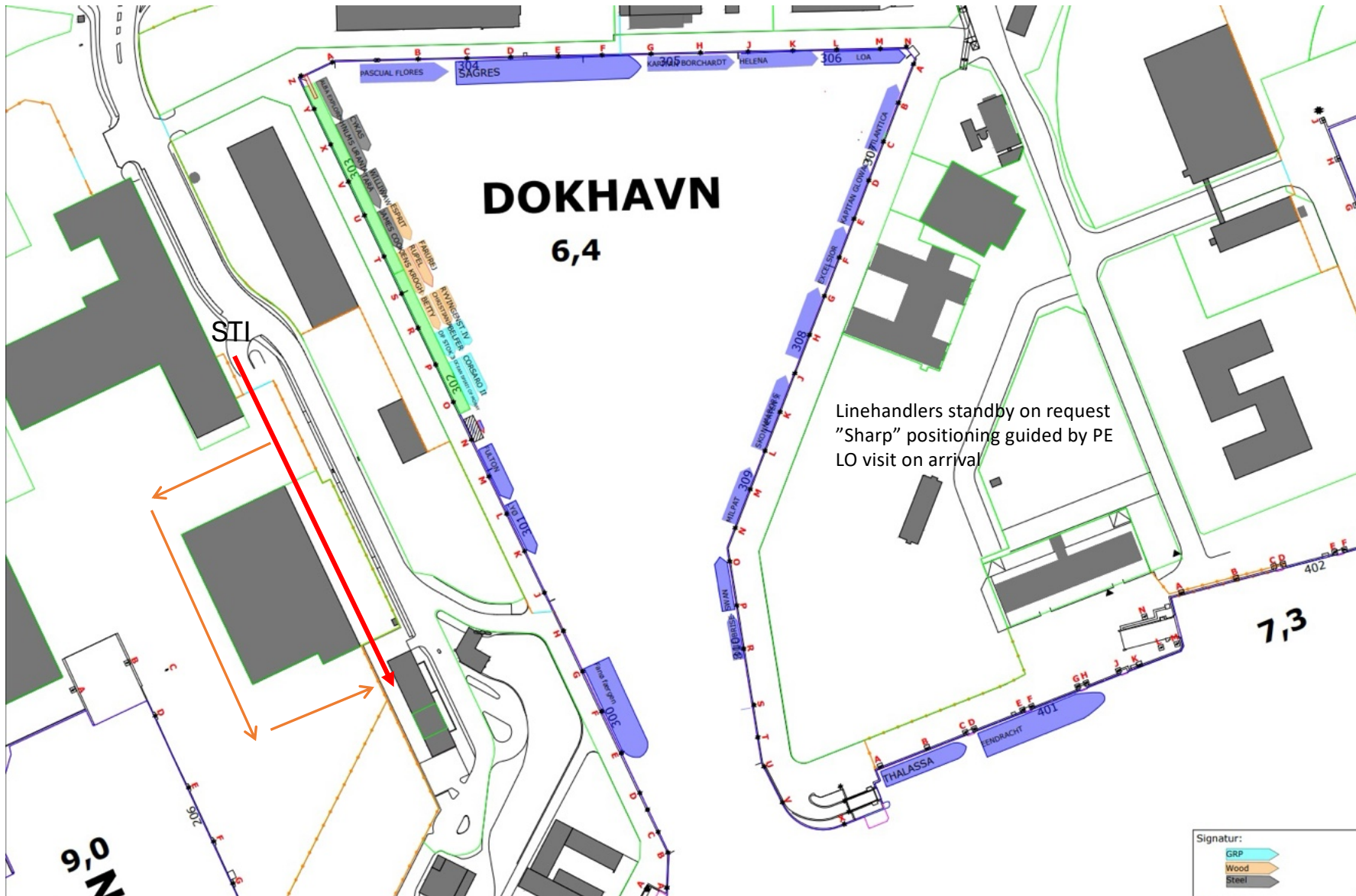
VHF CH 12

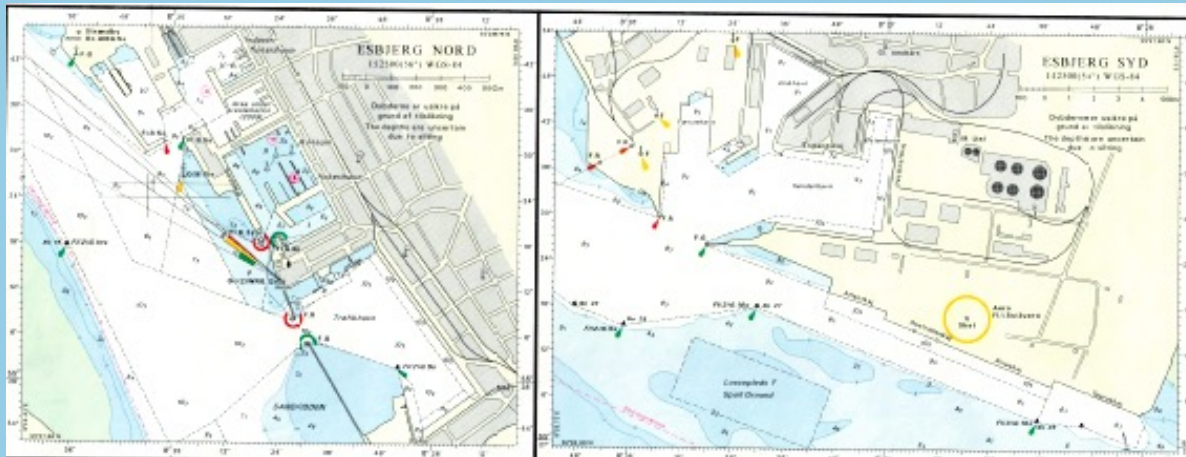



THE TALL SHIPS RACES
Esbjerg 2025
organised by Sail Training International









- LO at vessels disposal during the stay
- Fleet internal communication VHF CH 72
- No changing of berths/positions
- HW/LW difference 1,4 meters, quayside height 2,5-4,0 meters



Departure will be conducted as "Parade of Sail"

Details at Captains Briefing on 8th August






THE TALL SHIPS RACES
Esbjerg 2025
organised by Sail Training International

It's with greatest joy and anticipation we say:

See You in Esbjerg in a few days



OTHER BUSINESS



Sail Training International

FEEDBACK FORM – ABERDEEN

<https://forms.gle/3eMg7B8zZh5SP1qaA>



FEEDBACK FORM – KRISTIANSAND

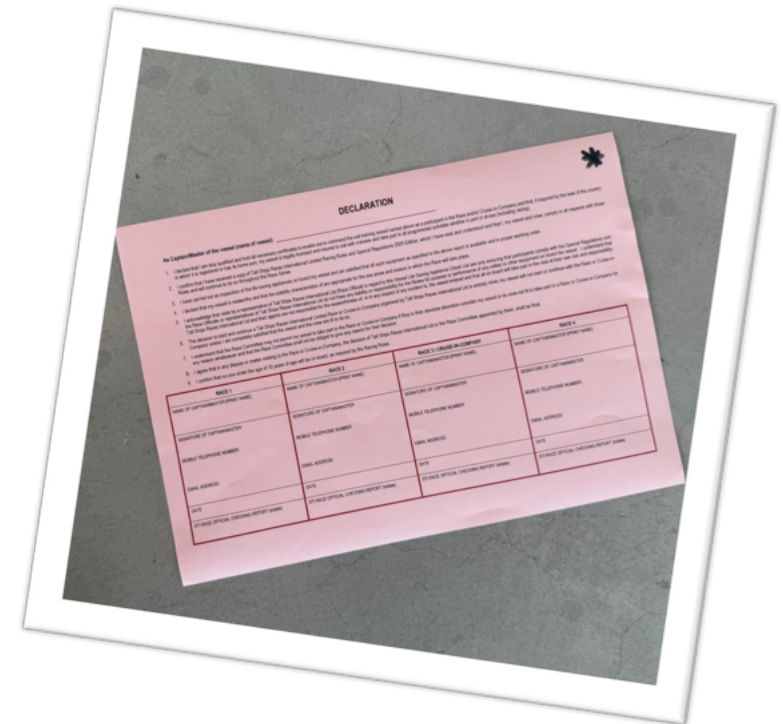
<https://forms.gle/yqNb3oyUWQn6gz766>



Sail Training International

PINK DECLARATIONS & CREW LISTS

| CREW LISTS | | | |
|------------|-------------------------|-----------------------|---------------------|
| Race | Race Dates | No. Crew List Details | |
| LE HAVRE | 04/07/2025 - 07/07/2025 | 66 | Manage Crew Details |
| RACE ONE | 07/07/2025 - 08/07/2025 | 66 | Manage Crew Details |
| DUNKIRK | 10/07/2025 - 13/07/2025 | N/A | Manage Crew Details |
| RACE TWO | 14/07/2025 - 18/07/2025 | 59 | Manage Crew Details |
| ABERDEEN | 19/07/2025 - 22/07/2025 | 59 | Manage Crew Details |



Sail Training International

ABERDEEN ROCK TROPHY



Sail Training International

The Tall Ships Races Trainee Feedback Questionnaire



Complete our online survey for a chance to win some epic prizes!



plus...

A FREE Voyage

during The Tall Ships Races

2026



HAVE YOUR SAY!

SCAN THE QR CODE TO FILL OUT THE FORM

DEADLINE FOR COMPLETION: 31ST AUGUST 2025

FOLLOW US ON SOCIAL MEDIA



@TALLSHIPSRACES



SAIL TRAINING INTERNATIONAL

FRIENDSHIP TROPHY



Sail Training International

THANK YOU



Sail Training International