

**CAPTAIN'S MANUAL
TALL SHIPS RACES
DUNKIRK 2025**



THE TALL SHIPS RACES

DUNKIRK

The fascination of Dunkirk stems from being nearly surrounded by the North Sea and her beautiful coast. The sea has always been vital to our city's commerce, and an important transportation link to the world. Dunkirk is the third biggest port of France and essential to the France and is offering various free time activities and opportunities to enjoy our beautiful coastline.

The "CUD" (**Communauté urbaine de Dunkerque**) offers an opportunity for 200 young people to sail on ships participation in the competition. I am sure, that this opportunity gives them a chance to make new friends, get experiences and enjoy a unique adventure. I am also convinced that by strengthening the North Sea identity of young city dwellers living by the North Sea, we can anchor meaning of healthy sea by our younger generation.

During your stay, we want to offer all participating crews the opportunity to enjoy summery, maritime Dunkirk. The berths for the ships and all services are right in the middle of the port only 400 meters from the city centre, and, in addition, crews are provided with Dunkirk-style, relaxed and communal activities.

It is my great pleasure to welcome the Tall ships races at Dunkirk !



CONTENTS

04 CONTACT ADDRESSES AND TELEPHONE NUMBERS

- 04 Host Port Organization and Sail Training International
- 04 Harbour & Emergency Contacts

05 SHIPS' AGENTS AND PORT SERVICES

06 LIAISON OFFICERS

07 ARRIVAL ARRANGEMENTS

- 07 Charts
- 07 Frequencies and Call Signs
- 07 Procedures
- 08 Pilots
- 08 Tugs
- 09 Customs and Immigration
- 09 Parade of Sails

10 BERTHING

- 10 Berthing Instructions
- 10 Formalities and Ceremonies
- 10 Open Ships
- 11 Berthing Plan

12 SHIP SERVICES

- 12 Fuel
- 12 Water
- 12 Electricity
- 12 Waste
- 12 Sewage
- 12 Gas
- 12 Repairs

13 CAPTAINS' PROGRAM

- 13 Captains' Dinner
- 13 Captains' Briefing

14 CREW PROGRAM

- 14 Crew Party
- 14 Crew Parade
- 15 Prize Giving Ceremony
- 15 Crew Activities

16 IN PORT FACILITIES

- 16 Crew Space and Facilities
- 16 Laundry Facilities
- 16 Showers and Toilets
- 17 Transport
- 17 Groceries - Delivery

18 CITY CULTURAL PROGRAM AND TOURIST INFORMATION

- 18 Cultural Activities
- 19 Services: Pharmacy, Bank, Post, Shopping, Wifi, Transport

CONTACT ADDRESSES AND TELEPHONE NUMBERS

HOST PORT ORGANIZATION AND SAIL TRAINING INTERNATIONAL

PRODUCTION OFFICE AND PORT COMMITTEE

Liaison Office: Hubert Rubbens
+32 486 72 90 73

HARBOUR OFFICE

2505 Route de l'Écluse Trystram,
59140 Dunkerque
+33 (0) 3 28 28 78 78

CAPITAINEURIE DU GRAND PORT MARITIME DE DUNKERQUE

+33 (0) 3 28 28 75 96

Port Commander: Joël Floch

+33 (0) 3 28 28 75 91

Second Port Commander: Eric Lepretre

+33 (0) 3 28 28 75 83

Security Port Officer: Jean-Pierre Mann

+33 (0) 3 28 28 73 44

SAFETY AND SECURITY DUTY CENTER

Rue du Pertuis de la Marine,
59140 Dunkerque

Bruno Willems: +33 (0) 6 12 47 22 87

SAIL TRAINING PRESS AND MEDIA CENTER

(Contact details not specified)

INTERNATIONAL RACE OFFICE

(Contact details not specified)

CORPORATE HOSPITALITY

Halles aux Sucres

9003 Rte du Quai Freycinet 3 Môle 1,
59140 Dunkerque

HARBOUR & EMERGENCY CONTACTS

Rescue stations available along basins

PORT AUTHORITIES

Vessel coordination office (capitainerie)

Phone: +33 (0) 3 28 28 75 95

Port security level: 1

PFSO: Mr Lecoeur

Phone : +33 (0) 3 28 28 73 44

HARBOR OFFICE

Phone: +33 (0) 3 28 28 76 03

Dunkerque VTS

VHF: 73

SAFETY/DANGEROUS GOOD OFFICE

Phone: +33 (0) 3 28 28 75 95

E-mail: matdanger@portdunkerque.fr

RADAR DUNKIRK PILOT STATION

Phone: +33 (0) 3 21 35 69 93

Email: tov@pilotagedunkerque.com

VHF: 16 & 72

TOWAGE

Phone: +33 (0) 3 28 28 73 91

BOATMEN

Phone: +33 (0) 3 28 63 37 50

IMMIGRATION POLICE

Phone: +33 (0) 3 28 58 82 40

SHIPS' AGENTS AND PORT SERVICES

Port agent labeled by the organization
EURO DOCKS SERVICES

227 avenue Maurice Berteaux,

59430 Saint-Pol-Sur-Mer

Phone (24h) : +33 (0) 3 28 21 93 51

E-mail : tramping@eurodocks.com

AGENA TRAMP

Centre d'affaires Créanor,
2 route de Bergues, CS 40073

59412 Coudekerque-Branche

Phone: 09 72 59 11 17

E-mail: dunkirk@agenatramp.fr

A.G.S.M.

1/7 Pl de la République - BP 3177

59377 Dunkerque

Phone: 03 28 66 74 00

E-mail: mail@agsm-shipping.fr

AMLF LEVM SHIPPING

30, quai des Américains

59140 Dunkerque

Phone: 03 28 25 27 16

E-mail: agency@lemvshipping.com

ISS SHIPPING

12 bis, rue Jacques de Vaucanson

BP – 13500 Martigues

Phone: 06 58 46 49 85

E-mail: iss.dunkirk@iss-shipping.com

CMA/CGM AGENCES FRANCE

2507 Route de l'Écluse Trystram

59140 Dunkerque

Phone: 03 28 58 46 14

E-mail: dkn.operation@cma-cgm.com

DELPIERRE SA

1, rue Vanstabel

59140 Dunkerque

Phone: 03 28 65 86 00

E-mail: delpierre@netinfo.fr

DESTOCK FCL

Route de la maison blanche

59279 Loon-Plage

Phone: 03 61 30 70 17

E-mail: destock@destock-bois.com

D F D S SEAWAYS

Route de la maison blanche

59279 Loon Plage

Phone: 03 28 28 95 37

E-mail: bedem@dfds.com

EURO DOCKS SERVICES

227 avenue Maurice Berteaux

59430 St Pol s/Mer

Phone: 03 28 21 93 51

E-mail: tramping@eurodocks.com

HUMANN & TACONET

2512, route de l'écluse Trystram

59140 Dunkerque

Phone: 03 28 63 51 85

E-mail : dunkirk@humtac.fr

MARFRET

32, Quai des Américains - 2ème Et

59140 Dunkerque

Phone: 03 28 65 91 91

E-mail: llover@marfret.fr

M.S.C. FRANCE S.A.

11, rue des Arbres BP 86376

59377 Dunkerque

Phone: 02 35 21 79 69

Fax: 03 28 26 32 10

E-mail: arnaud.gens@msc.com

SEA INVEST SHIPPING AGENCY

3280, quai de l'Escaut

59760 Gde Synthe

Phone: 03.28.26.79.00

E-mail: trampdkk@sea-invest.fr

WORMS S.M.

1-7 place de la république

Dunkerque

Phone: 03 28 65 80 80



LIAISON OFFICERS

YOUR LO WILL BE PLEASED TO ASSIST YOU WITH ANY QUERIES YOU MAY HAVE AND TO HELP YOU WITH VARIOUS ARRANGEMENTS THAT WILL BE REQUIRED DURING YOUR STAY.

Dunkirk will be providing a significant knowledgeable network of vessel liaison officers. There officers will be allocated to vessels in advance and ships will notified. Your vessel will be met by a LO upon arrival at Dunkirk.

If you arrive late at night you will be met the next morning. The LO will be available daily from 09:00am till 10:00pm. All LOs will have mobile phones to ensure the best contact between your vessel and the designated LO.

Trough the LO we will provide you with essential information, much of which is contained within this manual, and will keep you up-to-date with any revised or new material throughout your stay in Dunkirk.

ARRIVAL ARRANGEMENTS

CHARTS

MARINE CHART: BE_1350_0

(Dunkerque and Approaches)

INCLUDED IN THE ALL BELGIUM CHARTS NAUTICAL CHARTS FOLIO

AVAILABLE ON MULTIPLE PLATFORMS

(Android, iPhone/iPad, MacBook, Windows, PC)

SEE: Dunkerque and Approaches - iBoating App

FREQUENCIES AND CALL SIGNS

SHIPS \geq 300 GT MUST CONTACT:

- **Dunkirk VTS** on VHF channel 73
 - **Dunkirk Pilot Station** on VHF channel 72
- Within the VTS zone, radio watch on VHF channel 73 is compulsory.

RADIO FREQUENCIES

- **VHF 73** (Dunkirk VTS)
- **VHF 72** (Piloting)
- **VHF 16** (Permanent Watch)

CONTACT NUMBERS

- **Port Officer, Eastern supervision**
+33 (0) 3 28 28 76 03
- **Port Officer, Western supervision**
+33 (0) 3 28 28 76 04
- **Watch Pilot at Hemmes de Marck**
+33 (0) 3 21 35 69 93
- **Calais Port Watch**
+33 (0) 3 21 00 68 49
- **CROSS Gris-Nez**
+33 (0) 3 21 87 78 30

Call Signs: Not applicable

PROCEDURES

Masters must comply with the Harbour Master's Office instructions and follow the regulations mentioned below.

The port web site details the useful information for the ship's stay in the port of Dunkerque.

<http://www.dunkerque-port.fr/>

NOTIFICATIONS REQUIRED:

- **ETA - 48 h:** Call request
- **ETA - 24 h:** Inwards advertisement
- **ETA - 12 h:** Request to pilot
- **ETA - 2 h:** Confirmation of ETA.

IN PRESENCE OF AN LNG TANKER IN ONE OF THE TRAFFIC LANES, THE FOLLOWING ADDITIONAL PROVISIONS ARE IMPLEMENTED.

It is strictly forbidden for any vessel:

- To precede or follow within one nautical (1NM) of the LNG tanker in its lane
- To pass the LNG tanker in its lane

Traffic is regulated by "Dunkirk West" so that an LNG tanker travelling in its lane can neither overtake nor be overtaken, in which instance the safety distance of one nautical mile around the vessel would no longer be respected.

A following vessel may overtake an LNG tanker in its lane, provided that:

- The overtaking vessel is able to safely move into the order lane during the overtaking manoeuvre.
- One the overtaking manoeuvre has been completed, the overtaking vessel resumes its course in the compulsory traffic lane, respecting the safety distance of one nautical mile in front of the LNG tanker.
- Prior VHF contact is established between the overtaking vessel and the LNG tanker to inform it of its intentions, as well as with any counter-horizon vessel travelling in the other traffic lane that it may come across during its overtaking manoeuvre.

In the case of an LNG tanker entering or approaching the West Port jetties, any vessel arriving from the East and heading West to use the West Channel (zone E) will only be authorised to pass buoy pair DKB/DW16 once buoy DW15 has been passed by the LNG tanker.

In the case of an LNG tanker leaving the western port, vessels coming from the east and heading west will take all necessary steps to respect the safety distance of one nautical mile behind the LNG tanker heading into its lane. All overtaking manoeuvres must comply with the above provisions. Vessels arriving from the west and bound for the eastern port will not be able to pass the pair of buoys DW 13/14 until the LNG carrier, having passed the jetties, has entered the northern lane of the channel.

PILOTS

COMPULSORY FOR:

- Vessels > 50m LOA on Dunkirk Roads near Dunkirk east breakwater
- Vessels > 100m LOA at the Dyck Pilot station north of Calais port

PILOT STATION CONTACT:

- Address: Avenue des Bancs de Flandres, 59140 Dunkerque
- Email: tov@pilotedunkerque.com
- Phone: +33 (0) 3 28 66 10 70
- Website: www.pilotedunkerque.fr

TUGS

COMPULSORY FOR:

Towing service is available free of charge (once in/out) for the participating vessels.
A fleet of 8 tugs assists the ships with manoeuvres (power from 2600 to 3900 kw).

BOLUDA DUNKERQUE:

- Address : Chaussée des Darses, 59140 Dunkerque
- Phone : +33 (0) 3 28 65 81 00
- Email : vigie.dunkerque@boluda.fr

Pilot, Tug(s), linesman ordered via Euro Docks Services.
See Section 9

FOR ANY REQUEST, PLEASE CONTACT BOLUDA DUNKERQUE

Phone: +33(0)3 28 65 81 00
Email: boluda-dunkerque@boluda.fr

REQUIREMENTS FOR SAFE TOWING OPERATIONS

✓ GOOD PRACTISES



ALWAYS use a monkey's fist!

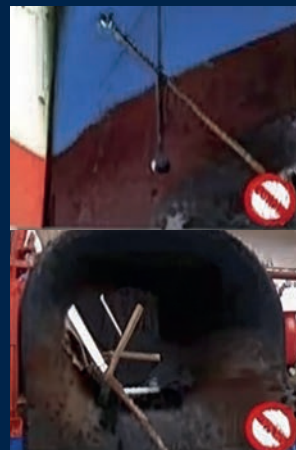
Throw thin heaving lines (as soon as possible)

Use winch/capstan to heave up the towing line

Keep clear of towing line during operation.
If you need to work around the fairlead, inform the tug

Let towing line to go smoothly on Captain's orders when tug is ready

✗ BAD PRACTISES



Dangerous or heavy objects = Danger for the tug's crew

Don't let heaving lines to be hooked hang overboard

Don't keep sleeves or splice in fairlead

Don't keep sleeves or splice in fairlead

Do not step over the towing line

ADDITIONAL MEASURES FOR FERRY VESSELS



Communication: in French as far as possible

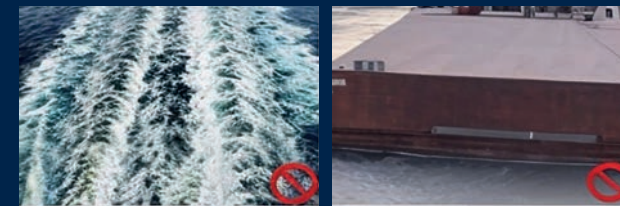
Intent of maneuver/Position of the fairleads/Pushing position/Timing
Start swinging
Increase speed

Speed

Keep an appropriate speed during all the maneuver with tugs

Tug position

Keep in mind the tug's dimensions when sailing in narrow waters (buoys, jetties, shallows)
Water surface cleared



Communication: in French as far as possible

Intent of maneuver/Position of the fairleads/Pushing position/Timing
Start swinging
Increase speed

Speed

Keep an appropriate speed during all the maneuver with tugs

Tug position

Keep in mind the tug's dimensions when sailing in narrow waters (buoys, jetties, shallows)
Water surface cleared

CUSTOMS AND IMMIGRATION

A vessel entering into France from another Schengen country, or a recreational craft departing for such a country, may enter into the country and exit the country without visiting a border crossing point and without being subjected to border checks other than randomly. Vessels participating in the Tall Ship races will be handled in a similar manner to passenger ships, taking into account customs formalities. The crew members passports will not be stamped when arriving in Dunkirk or departing from Dunkirk, when the ships arrive at and depart from ports located in the Schengen Area.

A current crew list must be available for random inspection. Vessels with a length of 45 meters or longer or if they can carry more than 12 passengers, are obliged to register in an electronic shipping data management system **by the port agent**.

An arrival notification including all data required, must be submitted **to the port agent** at least 24 hours prior to arrival and a confirmation within two hours of the arrival.

Vessels shall maintain a list of the crew and any passengers containing the information required in the forms (crew list and passenger list) as well as, where applicable, the visa or residence permit numbers. Vessels obliged use the service **of the port agent** for delivery of list. On smaller vessels arriving from other Schengen countries, the vessel must have a crew list ready if they are subjected to random border control.

A Customs Officer may board on arrival to complete Customs controls.

Further information about customs clearance : dr-dunkerque@douane.finances.gouv.fr

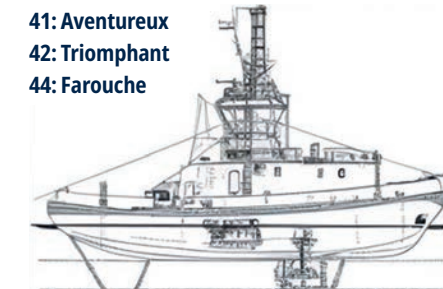
Phone: +33 (0) 9 70 27 07 00

During the border control, the vessel's captain must provide the immigration control authorities at the entry or departure point with a passenger and crew list.

For crew members starting or ending their leg in Dunkirk, border controls will be carried out as usual for passenger ships. The need for border control is determined by whether the crew members arrive from or depart to a non-Schengen area outside the Schengen area. Please do note that crew members with a Schengen visa and starting/ending leg in Dunkirk, will need border control arrangements and have their passport stamped at arrival and departure.

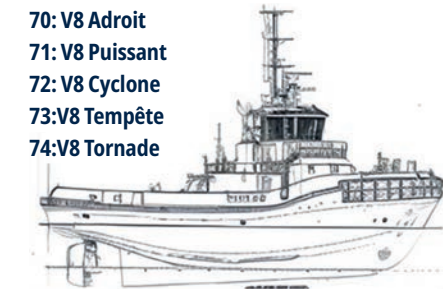
Vessels arriving to Dunkirk from outside the Schengen Area must undergo passport inspection, please contact **the port agent**.

41: Aventureux
42: Triomphant
44: Farouche



40T Azimut Tractor Tug Class

70: V8 Adroit
71: V8 Puissant
72: V8 Cyclone
73: V8 Tempête
74: V8 Tornade



70T Azimut Stern Drive Tug Class

PARADE OF SAILS

DATE: SUNDAY 13 JULY AT 15:00 HRS

- Ships depart moorings on command of the Parade Commander via one of 3 locks.
- **Further details at Captains' Briefing Saturday 12 July**



BERTHING

BERTHING INSTRUCTIONS

• **Service hours:** 9-10 July, 05:00 - 22:00

Vessels may dock without assistance outside service hours if capable.

BERTHING LOCATIONS :

- **Class A-B:** Quai Freycinet 3 Môle 1 - Quai Freycinet 4
- **Class B:** Pontons Quai Freycinet 2 –
- **Class C-D:** Quai Freycinet 1 - 2

All vessels are expected to provide their own fenders and means of access to the shore.

If a vessel requires additional fenders, please be in contact with your local agent.
At quai Freycinet 3-4 there are fixed fenders (old truck tyres).

Double mooring may occur. When a vessel is requested to berth outside another vessels, the vessels must utilise their own fenders and gangways.

Linesmen together with your liaison officer will be in attendance to take vessels lines when approaching the berth.

For all ships with a pilot on board, the pilot will give the directions for the mooring.
For ships without pilot, **"follow me boats"** will be standby to show your mooring place.

BERTHING PLAN



* Sous réserves de modifications. ** Bateaux médias.

FORMALITIES AND CEREMONIES

OPENING CEREMONY 10:00AM

Official opening of the venue of the Tall ships races in Dunkirk.

Please horn your venue at the GO of the liaison officer.
Please check VHF channel 14.

WELCOME COCKTAIL 12:00AM

The captains are invited for the welcome cocktail on the rooftop of the "la Halles aux sucres".

LO will escort you to the reception.

SHIP DRESSING WITH SIGNAL FLAGS

- Hoisting: 8:00
- Lowering: 21:00

OPEN SHIPS

The Tall ships races will attract thousands of visitors during the festivities in the host port, and there is often huge interest in visiting ships.

It is therefore greatly appreciated when ships open their decks to the public.

PUBLIC VISITS ENCOURAGED: 10:00AM - 09:00PM

Vessels offering possibilities to visit the deck should ensure a safe gangway with sufficient load-bearing capacity and railings on both sides.

MÔLE 1

- 1 Fryderyck Chopin
- 2 Capitain Miranda
- 3 Morgenster
- 4 Skonnerten Jylland
- 5 Eendracht
- 6 Wyld Swan
- 7 Pogoria
- 8 Christian Radich
- 9 Thalassa
- 10 Prolific
- 11 Vera Cruz
- 12 Phoenix
- 13 La Nébuleuse

- 14 HNLM Urania
- 15 Pascal Flores
- 16 Valborg
- 17 Gulden Leeuw
- 18 Le Français
- 19 Hosanna
- 20 Sorlandet
- 21 Shabab Oman II
- 22 Royalist
- 23 Kapitan Glowacki
- 24 Belem
- 25 Le Biche
- 26 Milpat

FREYCINET 2

- 1 Nele**
- 2 Esprit
- 3 Corsaro II
- 4 Juan de Langara
- 5 Rona II
- 6 Williwaw
- 7 Tara
- 8 Ocean Scout
- 9 Cykas
- 10 Ortac
- 11 Dar Szczecina
- 12 Belfer
- 13 Betty
- 14 Rupel
- 15 Licorne
- 16 Petit Jean**
- 17 Téthys**

QUAI DE DÉPART/GUILLAIN

- 1 BSAM Garonne
- 2 Mutin
- 3 Excelsior
- 4 Jolie Brise
- 5 Nordet DF37
- 6 Ocean Spirit
- 7 Swan

FREYCINET 1

- 1 Dar Młodzieży

SHIP SERVICES

FUEL

• Ordered by owners from:

ATLANTIC ENERGY

Email: bunkers@oil-atlantic
Phone: +33 (0) 4 69 96 06 96

YSBLUE

Email: commerce@ysblue.fr
Phone: +33 (0) 3 21 30 22 37

BEQUET

Email: becquet@brun-invest.net
Phone: +33 (0) 3 28 64 70 18

Fueling is possible before
the opening hour: 10:00am

WATER

All the quays have installations for fresh water.
Linesmen at the shore will help A class vessels
with fresh water installations. Water from the quay
is free of charge.

All connections for Class A vessels on quay
Freycinet 3 and 4 are done by the CUD authorities.
Water will be given like confirmed on the LOGREC.

ELECTRICITY

All quays have means to provide shore side power
and our aim is that all participating vessels will
use it as we want to use as much green electricity
produced by renewable sources and possible.
CUD authorities will provide the power according
to the information given by vessels in the LOGREC.

We have an electrician service on standby at arrival
to make connections if needed and give support
in questions or problems related to electricity.
If your vessel has any connection that is not
according to EU standards, please be in contact
with the LO.

WASTE

*Dunkirk and the event organisation make big efforts in waste sorting
and in making the event as sustainable and environmentally friendly as possible.
We challenge and expect vessels to take part for us to succeed.
As such, sorting of waste is mandatory in Dunkirk.*

Waste types collected by the event organisation in Dunkirk are:

MIXED WASTE
BIO WASTE
PAPER

GLASS
CARDBOARD AND CARTON
LPDE PLASTIC

FOOD OIL
PAINT, BATTERY,
AEROSOL AND OTHER
HAZARDOUS WASTE

During the briefing, we will provide you with garbage bags
along with an explanation of our waste sorting system.
If you arrive on Wednesday, please place your bags directly in the dumpsters.
On Thursday morning, leave your bags at the foot of your ship before 8 a.m.
For the rest of the event, use the nearby dumpsters.

SEWAGE

Sewage is collected free of charge.
Relaising sewage and gray water in the sea
is prohibited by law. **Please make an order
for collection of sewage from your LO.**

GAS

Provided if necessary. **Please inform your LO
about the type of gas bottle needed.**

REPAIRS

GENERAL REPAIRS

Damen Shiprepair Dunkerque
Route de l'écluse Watier,
59140 Dunkerque
+33 (0) 3 28 66 48 00

SAILS

Voilerie Seeten
2533 Route du pertuis du môle 2,
59140 Dunkerque
+33 (0) 6 24 38 86 03
voilerie.seeten@hotmail.com

ENGINES

DB Moteurs
Route du pertuis du môle 2, 59140 Dunkerque
+33 (0) 3 28 64 98 09

ELECTRONICS

Bleu Marine
2539 Route de l'écluse Trystram,
59140 Dunkerque
+33 (0) 3 28 63 44 50

CAPTAINS' PROGRAM

*All Captains with companion are invited to a Captains' Dinner !
The Mayor will host an evening of relaxed elegance and atmosphere
of fun and laughter in the City Hall.*

CAPTAINS' DINNER

DATE: THURSDAY 10 JULY, AT 7:00 PM

LOCATION : DUNKIRK CITY HALL

(Pl. Charles Valentin) a 15 minutes walk away

PROGRAMM

10:00AM

Official opening of the venue of the Tall ships races
in Dunkirk. Please horn your venue at the GO of the liaison officer.

7:00 PM

Cloakroom & Welcome drink

8:00 PM

Dinner

9:30PM TO 11:00PM

Open bar

00:00AM

End

Further information about Captains' Dinner will be given by the LO at arrival.

CAPTAINS' BRIEFING

DATE: SATURDAY 12 JULY AT 04:00PM

LOCATION : "LA HALLE AUX SUCRES"

Quai Freycinet, Grand auditorium, grand floor
within walking distance from all ships



CREW PROGRAM

CREW PARTY

To celebrate the crew members, you will be treated with a delicious meal, nice drinks, fun games, energetic DJ's **guaranteed to make this a night to remember!**

DATE: FRIDAY 11 JULY, 6:30PM TO 00:00AM

LOCATION: TRAINEES' EVENT TENT (restricted zone near main stage)



CREW PARADE

We encourage all crews to make costumes, props, or in other creative ways for the crew parade participation. Please see the Map for the exact location of the muster. Further information from the Los at arrival.

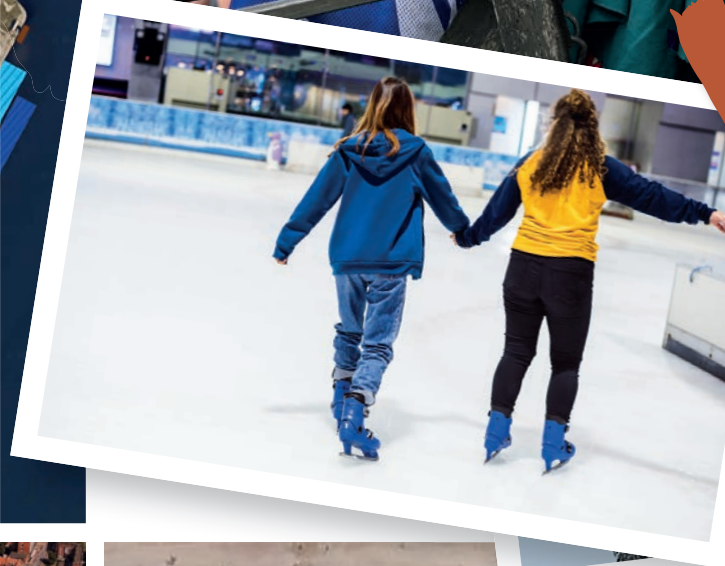
DATE: FRIDAY 11 JULY

Participants are requested to gather at 3:30pm on the esplanade.

Liaison Officers (LOs) will welcome the crews and guide them to the designated "Rendez-vous Area".

LOCATION: RUE DU PERTUIS DE LA MARINE

The route will take participants around the Bassin de Commerce, through the heart of the city centre, covering approximately 2.8 km.



PRIZE GIVING CEREMONY

DATE: FRIDAY 11 JULY, 5:00PM

START: MAIN STAGE

Prizes will be awarded by the STI and the City of Dunkirk. There will be also a prize awarded to the best team of the "Crew games".

CREW ACTIVITIES

DATE: THURSDAY 10 JULY

All crew members are invited to enjoy an evening at the ice rink, which will be exclusively reserved for them.

LOCATION : PATINOIRE MICHEL-RAFFOUX

Rte du Quai Freycinet 3 Môle 1, 59140 Dunkerque

DATE: FRIDAY 11 JULY

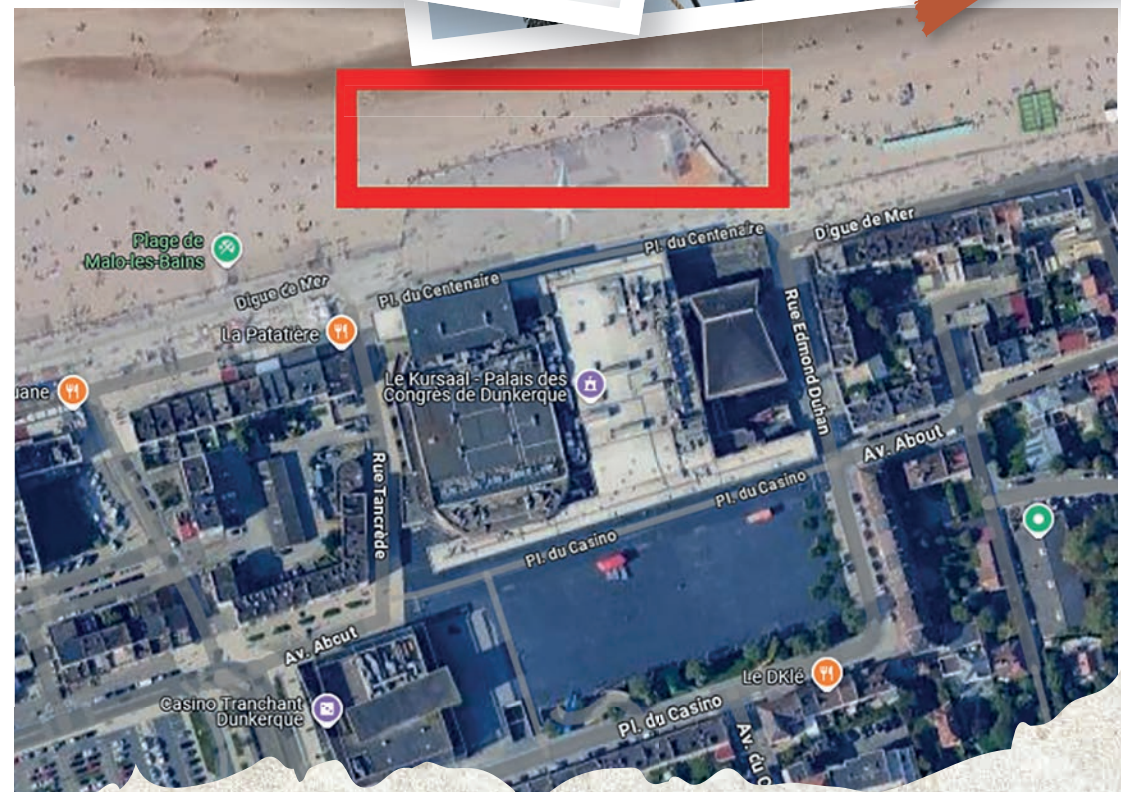
A fun activity will be organized for all crews on Malo-les-Bains beach.

The event will be a "Koh-Lanta" style team challenge, with games and competitions in the sand.

The crews are expected on the beach at Malo-les-Bains, in front of the Palais des Congrès, at 8:45am.

9:45AM TO 10:00AM: WARM-UP SESSION (OPTIONAL)

10:AM TO 12:30PM: TEAM CHALLENGE ACTIVITIES





IN PORT FACILITIES

CREW SPACE AND FACILITIES

**OPEN DAILY
FROM 09:00AM TO 00:00AM**

The crews have access to a space entirely dedicated to them for all four days. There, they will find drink dispensers with minimum pricing, table football games, a speaker to play their own music, and comfortable seating.

LAUNDRY FACILITIES

Two laundry areas have been set up on site, each equipped with 5 washing machines and 5 dryers.

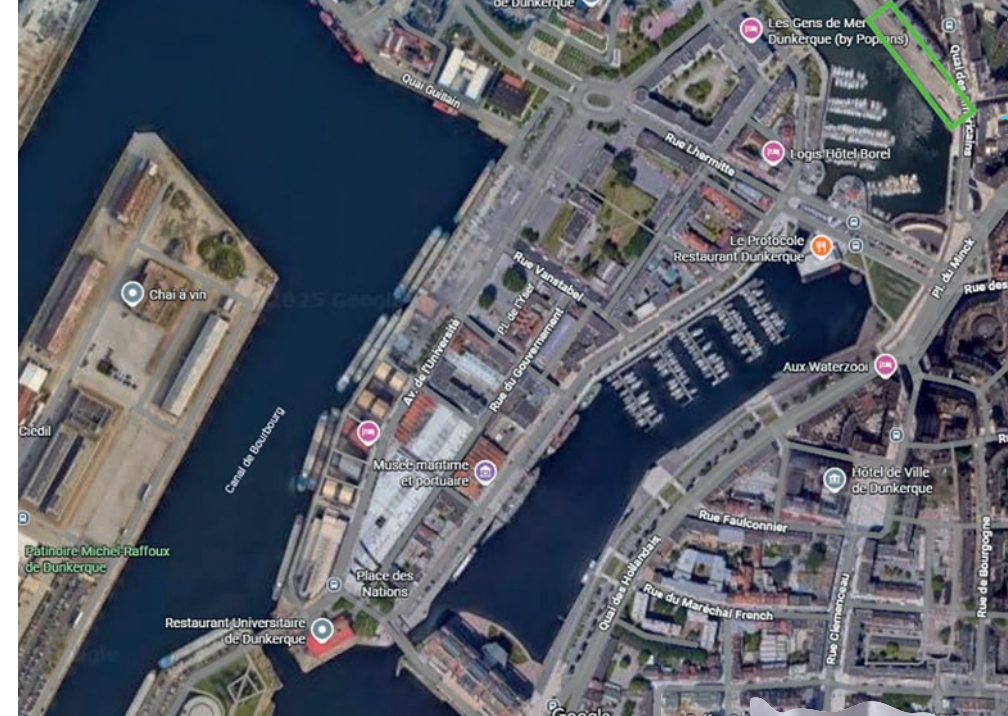
A volunteer will provide detergent pods upon request. Your liaison officer will show you the location of the laundry areas.

**OPEN: THURSDAY TO SATURDAY
10:00AM TO 08:00PM
& SUNDAY 10:00AM TO 12:00PM**

SHOWERS AND TOILETS

Showers open 24/24 reserved for crew members are available on site.

They consist of individual, monitored cabins that are cleaned throughout the day. Private toilets are also available for crew use. Your liaison officer will show you their locations.



TRANSPORT FREE PUBLIC BUS NETWORK

The organisation will provide about 100 bikes to tour freely around the city. Pick up and return place is Quai des Anglais.

GROCERIES DELIVERY

A grocery delivery service is available through our partnership with Leclerc.

HOW IT WORKS?

- Captains are required to download the "Leclerc Drive" application on their smartphone or tablet
- Once downloaded, they must create a personal Leclerc account
- Orders can be placed via the app starting Friday 4 July until and Monday 7 July
- Deliveries will take place on Friday 11 July, in the early morning between 05:00am and 08:30am, carried out by city staff
- Crews should be ready and available to help unload the goods upon arrival On-Site Ordering

It is also possible to place orders during the event, but with the followings limitations:

- Orders will be fulfilled within the limits of stock availability
- Next-day delivery is not guaranteed
- It is strongly recommended to place orders before Monday 7 July to ensure availability

ASSISTANCE

- Liaison Officers will be available for help throughout the event
- For any last-minute grocery needs, a LO can escort you to the nearest store

We encourage all ships to plan ahead and take advantage of this convenient service.



CITY CULTURAL PROGRAM & TOURIST INFORMATION

Looking for information during your stay?
Feel free to check the Visitor Center.

DUNKIRK VISITOR CENTER TOURIST OFFICE

Dunkirk Belfry - Rue de l'Amiral
Ronar'ch, 59140 Dunkerque
Town Center

MALO-LES-BAINS VISITOR CENTER TOURIST OFFICE

Place du Centenaire,
59140 Dunkerque
Seafront

MORE ACTIVITIES

www.dunkirk-tourism.com

WANT TO EXPLORE
THE CITY? HOP ON A BUS!
IT'S QUICK AND FREE
OF CHARGE!

CULTURAL ACTIVITIES

Dunkirk as a lot of offer to its visitors!
Here is a quick selection of things to do and see during your stay!

DUNKIRK BELFRY

Enjoy a panoramic view of Dunkirk
and its surroundings from the top of this tower
erected in 1440, classified World Heritage Site by
UNESCO.

Location: Rue de l'Amiral Ronar'ch,
59140 Dunkerque

DUNKIRK MARITIME & PORT MUSEUM

Want to know more about History of Dunkirk
and its maritime history? Much more than
a few models and paintings on a wall come
discover 1 museum, 3 ships and 1 lighthouse,
hosting 7 different exhibits.

Location: 9 Quai de la Citadelle,
59140 Dunkerque

DUNKIRK WAR MUSEUM

The Dunkirk War Museum tells the incredible
story of the Battle of Dunkirk and Operation
Dynamo in May-June 1940, the largest evacuation
effort in military history.

Location: Courtines du Bastion,
32 Rue des Chantiers de France,
59140 Dunkerque

FRAC GRAND LARGE CONTEMPORARY ART MUSEUM

If you like Contemporary Arts, discover the
Frac Grand Large, its outstanding architecture
and its temporary exhibitions.

Location: 503 avenue des Bancs de Flandres,
59140 Dunkerque

LAAC – MODERN ART MUSEUM

At the heart of a sculpture park overlooking
the famous Dunkirk Beaches, the LAAC Modern
Art Museum defies the sky with its remarkable,
white-ceramic architecture.

Location: 302 avenue des Bordées,
59140 Dunkerque

THE BEACH OF MALO-LES-BAINS & LEFFRINCKOUCKE

Enjoy a walk along the coastline, take a dive
in the north sea, have a drink at a terrace of a café,
have a sunbath on the white sand... The beaches
of Malo-les-Bains & Leffrinckoucke are a must
do in the summertime!

Location: Digue de mer,
59140 Dunkerque

THE "DUNES DE FLANDRES"

Nature lovers, this is your spot. Along the sea,
come and discover the preserved maritime
and coastal areas that make this place a "Grand
Site de France". During a peaceful walk, admire
the changing colours of our landscape, and enjoy
the variety of views.

Location: Along the coastline,
between Malo-Les-Bains & Zuydcoote

OPERATION DYNAMO SHIPWRECKS & REMNANTS

Along the coastline of Zuydcoote, you'll be
surprised to see remnants of World War II,
as bunkers, shipwrecks and fortifications appear
on the beach or in the dunes. The lower the tide,
the better the sight!

Location: Plage de Zuydcoote,
59123 Zuydcoote

SERVICES

PHARMACIES

- Pharmacie du Port, 25 rue Jean Jaurès
- Pharmacie du Centre, 3 bd Alexandre III
- Pharmacie Lafayette, 28 place Jean Bart
- Pharmacie de la République, 16 place de la République

BANKS & ATMS

- LCL, 15 boulevard Alexandre III,
59140 Dunkerque
- SG, 36 boulevard Alexandre III,
59140 Dunkerque
- Banque Populaire du Nord, 32 place Jean Bart,
59140 Dunkerque
- Crédit Agricole, 5 boulevard Sainte-Barbe,
59140 Dunkerque
- CIC, 4 boulevard Sainte-Barbe,
59140 Dunkerque
- Change du Nord, 29 boulevard Sainte-Barbe,
59140 Dunkerque

PUBLIC TRANSPORT

- Free bus network: www.dkbus.com
- Bus terminal, Gare de Dunkerque,
59140 Dunkerque
- Bus Information Desk, 5 place de la Gare,
59140 Dunkerque

POST OFFICE

- La Poste, 55 rue du Président Poincaré,
59140 Dunkerque

WHERE TO EAT AND DRINK ?

Dunkirk has a lot of yummy restaurants & bars for every taste and diet!

You'll find most of them along the quays, the town center & the Malo-les-Bains seafront.
Brand new foodcourt « Les Halles des Sœurs Blanches »!

Discover the first & brand new foodcourt in the town center for yummy food and local products!

Location: Halles des Sœurs Blanches - Cour François Bart, 59140 Dunkerque

Feel free to walk around and discover what Dunkirk has to offer!

More information on www.dunkerque-tourism.com

For a shopping experience, head to Place Jean-Bart, where you'll find both small local shops and major retail brands.



