



THE TALL SHIPS RACES
Aberdeen 2025

organised by Sail Training International

THE TALL SHIPS RACES ABERDEEN 2025 CAPTAINS' MANUAL



HOST PARTNERS



SUPPORTED BY
EventScotland

CAPTAINS' MANUAL

Contents

1. Contact Addresses and Telephone numbers

- 1.1 Port and Sail Training International Contacts
- 1.2 Consulates

2. Arrival Arrangements

- 2.1 Charts
- 2.2 Frequencies
- 2.3 Call Signs
- 2.4 Procedures
- 2.5 Pilots
- 2.6 Tugs
- 2.7 Customs & Immigration
- 2.8 Security
- 2.9 Declaration of Health and Ship Sanitation Certificate

3. Berthing

- 3.1 Special berthing Instructions
- 3.2 Berthing plan
- 3.3 Undocking & Parade of Sails
- 3.4 Ship Opening Hours
- 3.5 Day Sailing
- 3.6 Deck Receptions

4. Town Plan

- 4.1 In Port Facilities
- 4.2 Town Information

5. Captains' Programme

- 5.1 Captains' Dinner
- 5.2 Captains' Briefing

6. Crew Programme

- 6.1 Crew Party
- 6.2 Crew Parade
- 6.3 Prize giving
- 6.4 Crew Activities

7. City Cultural Programme

ABERDEEN



8. Liaison System

- 8.1 Explanation
- 8.2 Chief Liaison Officer
- 8.3 Location
- 8.4 Deliveries

9. Ship Services

- 9.1 Fuel
- 9.2 Water
- 9.3 Tank Emptying
- 9.4 Electricity
- 9.5 Waste
- 9.6 Gas
- 9.7 Repairs / Technical Issues
- 9.8 Stores
- 9.9 Ship Agents

10. Crew Services

- 10.1 First Aid Posts
- 10.2 Crew Centre
- 10.3 Telephones
- 10.4 Laundry
- 10.5 Toilets & Showers

11. Forms

- 11.1 Forms required

12. Cruise-in-Company Arrangements

- 12.1 (Not applicable)

13. Safety Overview

- 13.1 Overview of the in-port safety arrangements and key details

14. Emergency Procedures and Communications

- 14.1 Medical Emergencies
- 14.2 Major Incidents (Fire, explosion, man overboard etc.)

ABERDEEN



Welcome

Councillor Dr David J Cameron **Lord Provost and Lord Lieutenant of the County of the City of Aberdeen**

It is my great pleasure, as Lord Provost and Lord Lieutenant of the County of the City of Aberdeen to extend a warm North East of Scotland welcome to you and your crew as we celebrate the return of the Tall Ships Races to the Granite City for the first time in over 28 years.

Aberdeen City Council, along with our partners Port of Aberdeen and Aberdeen Inspired were thrilled that we were successful in our bid to bring this wonderful international event back to the city so that a whole new generation of locals and visitors alike can experience the spectacle and excitement that the Tall Ships brought us in 1991 and 1997.

Aberdonians still treasure memories of those fantastic days and many who were just children at the time now have the opportunity to create new memories with their own children and grandchildren.

Aberdeen is home to a bustling port dating back to 1136 which has over the centuries been the hub for various maritime industries, fishing, shipbuilding, North Sea oil and gas and latterly, tourism with cruise ships now regularly visiting our new South Harbour.

We are justly proud of our maritime history and our outward-looking, welcoming international reputation. These factors, along with the cultural richness, innovation and dynamism of our unique city played a major part in bringing the Tall Ships back to Aberdeen for the third time.

I am particularly delighted at the opportunities that the Tall Ships Races bring to our young people. Whether they become trainees on your ship, volunteers during the event, taking part in school projects or simply coming along to soak in the atmosphere and excitement of this spectacular festival, this will be a positive, life-changing experience for them.

The whole city is looking forward immensely to meeting you over these wonderful four days and we hope that you have an amazing time in our city while making new Aberdonian friends and lifelong warm memories.

ABERDEEN



**Adrian Watson
Chief Executive
Aberdeen Inspired**

Sailing ships are in the very DNA of Aberdeen, where many a famous vessel was built and sent around the world, giving our city a global reach and reputation for excellence.

It is a joy, then, to see so many beautiful Tall Ships return to pack the Port of Aberdeen, with a forest of masts that would have been an everyday sight in that bygone era.

You will find the Aberdeen of today different to the one of the days of sail. It's a modern, bustling city, full of excellent attractions from wonderful galleries and gardens to superb restaurants, cafes, and bars - and much more besides - for you to explore and enjoy.

More importantly, it is home to some of the friendliest people you could hope to meet in the many ports you will call at during your voyages, all of them thrilled to welcome the Tall Ships back after 28 years.

On their behalf, I offer the traditional toast of Aberdeen to you and your crew as you make unforgettable memories over the next four days.

Happy to meet, sorry to part, happy to meet again - Bon Accord!

ABERDEEN



Bob Sanguinetti
CEO
Port of Aberdeen

It is my great pleasure to welcome you and your magnificent ships to Port of Aberdeen for The Tall Ships Races Aberdeen 2025.

We are deeply honoured to once again host this awe-inspiring festival and extend the warmest of welcomes not only from our team at the port, but from the entire city of Aberdeen. For those captains and crews who last sailed into our harbour in 1991 or 1997 – welcome back. And to those visiting us for the first time – we're excited to share our port and our proud maritime heritage with you.

Aberdeen has always looked to the sea. For centuries, our port – dating back to 1136 – has served as a lifeline for fishing, shipbuilding, trade, and oil and gas. Today, we're embracing an exciting new era of maritime activity.

As you visit Aberdeen for the return of The Tall Ships Races, may your stay be safe, memorable, and filled with friendship.

On behalf of all of us at Port of Aberdeen – welcome, and fair winds.

ABERDEEN



1. CONTACT ADDRESSES AND TELEPHONE NUMBERS

1.1 Port and Sail Training International Contacts

<p>Aberdeen Port Committee Tall Ships Races Aberdeen Regent Centre Regent Road Aberdeen AB11 5NS</p> <p>W3W: ///juror.slips.cable</p> <p>Project Manager: Emma Wadee</p>	<p>Telephone Number: +44 (0)776 2087578</p> <p>Email: EWadee@aberdeencity.gov.uk</p> <p>TallShipsAberdeen@aberdeencity.gov.uk</p>
<p>Liaison Office Tall Ships Races Aberdeen Regent Centre Regent Road Aberdeen AB11 5NS UK</p> <p>W3W: ///juror.slips.cable</p> <p>Chief Liaison Officer: John Lang</p>	<p>Telephone Number: CLO – John Lang: +44 (0)770 2910029 Deputy CLO – Laura Lyth: +44 (0)777 3558016 Deputy CLO – James Druce: +44 (0)791 7636132 Services Lead – Mike Chalmers +44 (0)7933 264304</p> <p>Email: CLO@tallshipsaberdeen.com</p>
<p>Harbour Office Port of Aberdeen 16 Regent Quay Aberdeen AB11 5SS</p> <p>Harbourmaster: Benji Morrison Deputy Harbourmaster – Lewis Matheson</p>	<p>Telephone Number: +44 (0)1224 597000</p> <p>Email: harbour-masters@portofaberdeen.co.uk</p>
<p>Sail Training International Race Offices Tall Ships Races Aberdeen Regent Centre Regent Road</p>	<p>Telephone Number: +44 (0)1224 469845</p> <p>Email: office@sailtraininginternational.org</p> <p>TallShipsAberdeen@aberdeencity.gov.uk</p>

ABERDEEN



Aberdeen AB11 5NS	
Press & Media Centre (Map Ref) Tall Ships Races Aberdeen Regent Centre Regent Road Aberdeen AB11 5NS UK W3W: ///juror.slips.cable	Email: media@tallshipsaberdeen.com
1.2 Consulates Find a British embassy, high commission or consulate - GOV.UK	

ABERDEEN



2. ARRIVAL ARRANGEMENTS

2.1 Charts

The following UKHO Admiralty Charts are required for safe navigation to Aberdeen during the Tall Ships Race:

3. Chart 1446 – Aberdeen Harbour
4. Chart 210 – Newburgh to Montrose
5. Chart 146 – Aberdeen Harbour Berths

Vessels should ensure they carry the latest editions of these charts, fully corrected using the most recent Notice to Mariners.

Electronic Navigational Charts (ENCs) covering this area are also available through official Admiralty distributors and approved ECDIS systems. Mariners using ENCs must ensure they are up to date and used in accordance with SOLAS requirements.

2.2 Frequencies

VHF Channel 12 – Aberdeen VTS

VHF Channel 16 – International Distress, Safety and Calling

2.3 Call Sign

Aberdeen VTS

2.4 Procedures

The call identifier for Port of Aberdeen is “Aberdeen VTS”. Participation in the VTS scheme is mandatory for all Vessels operating in the VTS area. Aberdeen VTS is manned 24 hours a day and operates on VHF Channel 12.

Vessels must submit the Port of Aberdeen Pre-Arrival form to Aberdeen VTS at least 24 hours before arrival confirming ETA, towage, any deficiencies etc.

Vessels should give 1hrs notice to Aberdeen VTS with deepest draught and any known deficiencies to ships equipment and request for a pilot if required. After this, the following reporting points are as follows:

- Reporting Point “India”, 3 miles from the Fairway Buoy to request permission to enter the VTS control area.
- Reporting point “Bravo” in the vicinity of the fairway buoy or as instructed by VTS.

ABERDEEN



Prior to entering, the vessel should receive traffic clearance from VTS. In addition, vessels should have their anchors ready for use and fenders prepared for deployment if required.

2.5 Pilots

Free pilotage services are available for vessels participating in the Tall Ships Race and will be provided by Port of Aberdeen and is compulsory for all vessels except:

- Vessels under 60.00 metres in length.
- Vessels 60.00 metres in length to 74.99 metres which are fitted with at least one fully operational bow thruster unit; and
- Vessels moving from berth to berth with the permission of Aberdeen VTS

Notwithstanding the above, pilotage shall be compulsory for all vessels manoeuvring with the assistance of a tug or tugs.

2.6 Tugs

Free towage services for the Tall Ships event will be provided by the Towage Sponsor and approved harbour towage provider Targe Towing Ltd.

It is the responsibility of the vessel (or its appointed agent) to arrange towage services directly with the nominated towage provider. Due to high volumes of traffic, all requests should be made in advance to ensure availability, allow the port to coordinate timings, and facilitate the provision of a pilot.

For further details or to confirm towage arrangements, vessels should liaise with their appointed agent or contact Targe Directly.

Targe Towing Ltd. Contact Details:

Call Targe office on the below number to make a booking.

Please provide a Pilot on Board (POB) time for arrivals and sailing time for departures.

Monday to Friday 0830 – 1700 – +44 (0)1382 878136

Out of Hours – +44 (0)7749 044106

All bookings are to be confirmed by e-mail to: targeops@targetowing.co.uk

2.7 Customs & Immigration

The Tall Ships Project team have been working to ensure that the arrival process is managed effectively and efficiently. To ensure that this process works for our guest Ships, Clarkson's have been appointed vessel agents for the Tall Ships fleet regarding Border force arrival documentation for Aberdeen.

ABERDEEN



As an official sponsor for the customs and clearing organisation of the Tall Ships event, Clarkson's will provide the following services free of charge:

- Customs clearance for all participating tall ships
- Immigration clearance for all participating tall ships
- All crew formalities will be offered free of charge; this will include letters of invitations for all on signing crew and sail trainees and clearance for off signers to exit the UK

Travel Documents

To be able to travel, crew and sail trainees must bring the most current and appropriate travel documents. This is usually a passport, and sometimes a visa or a travel authorisation visa (ETA – see below). Please check which travel document you need for all countries visited during your journey. You should be able to find the latest information on the website of your country's ministry for foreign affairs. Finally, bring a photocopy or a picture of: - Your travel documents, - Insurance card, - Copy of the insurance policy.

Important: ETA – a new travel authorisation scheme

All crew and all sail trainees entering the UK area from abroad, will need either a visa or an ETA travel authorisation. This will be done electronically and cost 10 GBP, and this will be mandatory from 4th April 2025. You must check the information about ETA closer to the journey date, we recommend doing that at least 2 months in advance. To learn more about the electronic travel authorisation (ETA) and apply, click [here](#) if viewing this document digitally, or visit: www.gov.uk/eta.

Supporting Documents

All crew and trainees arriving into the UK by air must carry a Letter of Invitation, these will be supplied by Clarkson's. This is to make sure at the point of arrival at Aberdeen Airport they can provide correct evidence as to why they have travelled to Aberdeen, this will assist the Border Force Officials for speedy checks.

Exiting Aberdeen

Any crew or trainees who will be disembarking Aberdeen by AIR must have prior clearance from Border Force. Clarkson's will inform Border Force of all EU nationals who will be disembarking, Border Force will provide a verbal clearance.

Crews disembarking the vessel must visit a Border Force official to have their details checked and passport stamped with leave to enter, this will then provide them 7 days to depart the country. We would look for most of these clearances to take place on the Friday or Saturday morning so the crew can then enjoy the rest of the weekend. Clarkson's and Border Force will be available at the Events Centre to manage this procedure.

Once Clarkson's receive the crew lists, we will inform the captains which crew will require to be seen by Border Force.



Crew Exit / Entry Contact:
Crew Change Coordinator
Danielle Cooper
Crew@clarksons.com
 Tel: +44 (0) 1224 211500

2.8 Security

Port of Aberdeen is an ISPS-compliant port, and all SOLAS Compliant vessels of 300gt and above must submit a CERS Workbook at least 24 hours before arrival, detailing ETA, last 10 port calls, and security level.

The latest version is available from www.gov.uk/government/publications/the-cers-workbook or by contacting the MCA at cers3@mcga.gov.uk. Completed workbooks should be sent to the vessel's agent/VTs for uploading into Port of Aberdeen's Marine Navigational Safety Management System at least 24 hours before arrival.

All vessels are responsible for their own security arrangements.

For further guidance, contact your local agent or the Port Facility Security Officer (PFSO) before arrival.

Email: pfso@portofaberdeen.co.uk

2.9 Declaration of Health and Ship Sanitation Certificate

All Ships arriving from Dunkirk or a foreign port will be required to complete a Maritime Declaration of Health (MDH) document before arrival in Aberdeen. This form is in Appendix 3 of the manual, and copies will be issued at the Captains briefing in Dunkirk.

Ship Operators are reminded of the requirements for maintaining a valid Ship Sanitation Control or Exemption Control Certificate (SSCEC or SSCC). These certificates are crucial for ensuring the health and safety of your vessel and crew, as well as for complying with the requirements of the International Health Regulations 2005, and the implementing Regulations made thereunder.

Ships with a valid SSCEC or SSCC are asked to submit this with the MDH. Those that do not have a SSCEC or an SSCC may be inspected upon arrival in Aberdeen.

ABERDEEN



3. BERTHING

3.1 Special Berthing Instructions

A detailed berthing plan is provided in the Appendix 4, with any final amendments to be confirmed and shared with vessels on departure from Dunkerque.

All berthing operations will be coordinated by Aberdeen VTS, who will manage traffic and provide instructions on arrival.

Berths will consist of a mix of concrete quays, sheet-piled walls, and floating pontoons. All vessels should be prepared to use their own fenders when berthing, particularly where sheet piling is present. Some vessels will be required to raft alongside others.

During the event period in July, Aberdeen will experience an average tidal range of approximately 2.3 metres. Crews should ensure mooring lines are regularly tended and adjusted, as necessary.

Further operational details and any additional berthing instructions will be communicated as required by VTS.

3.2 A Berthing Plan and an overview of the Port (Appendix 4)

3.3 Undocking and Parade of Sails

The Undocking and Parade of Sail will take place on the 22nd of July, with a planned start time of 10:00. Vessels will proceed in line, exiting the Navigational Channel under the direction of Aberdeen VTS. Once clear of the channel, the parade will head North towards the mouth of the River Don, providing an impressive viewing opportunity from the shoreline. Vessels will then alter course to the East, proceeding towards the designated race start position. Further details, including timing confirmation and coordination instructions, will be communicated at the Captains Briefing in Dunkerque.

3.4 Ship Opening Hours

Ship Open to General Public

Guaranteed Ship Opening Hours:

- Saturday 19th July 14:00 – 18:00
- Sunday 20th July 11:00 – 18:00
- Monday 21st July 11:00 – 18:00

ABERDEEN



Ad hoc Ship Opening Hours:

If you are berthed on the quaysides, we would encourage you to open your ship to the general public as often as you are willing to accommodate. General public are not allowed to access the pontoon in the Upper Dock. If you need support to manage ship opening, please speak to your Liaison Officer.

3.5 Day Sailing

Day Sailing has been agreed directly with the Tall Ships on an individual basis. The timing of days sails and the list of Passenger booked for the day sails will be provided to the ship by the Liaison Officer and the Liaison team will help direct passengers to the quay and provide any support required.

3.6 Deck Receptions

Deck receptions as agreed with individual ships. Deck Receptions will be supported by the Aberdeen volunteer team and the Liaison Team who will help direct invitees and manage access to the ships.

ABERDEEN

4. TOWN PLAN

4.1 List of in port Facilities:

Post Office
Banks
Crew Centre
Liaison Centre
Venues for Events
Bus Stops for Crew transport
Crew Parade Route
Prize Giving Venue
Captains' Dinner Venue
Laundry facilities
Showers & Toilets
STI Race Office
Churches, places of worship
Etc.

Crew Centre and Liaison Centre

Regent Event Centre, Regent Road, AB11 5NS
W3W: ///juror.slips.cable

You will be able to access:

- Laundry facilities
- Events in the International Crew Programme
- Luggage storage
- Captains' Lounge

Showers and Toilets for Crew

Private showers and toilets for crew are located on Jamieson's Quay on the quayside.

Bus Services

For details of city bus services, stops, routes, fares, and timetables go to www.firstbus.co.uk/aberdeen

Crew Parade Route

The Crew Parade will begin at Union Terrace, and weave through the city via Schoolhill, Broad Street, Castle Street, Marischal Street and Regent Quay. The Crew Parade will begin at 16:00 on Sunday 20th July 2025.

Prize Giving Venue

The Prize Giving Ceremony will take place at Peterson Seabase, Regent Quay, Aberdeen, AB11 5AS at 17:00 on Sunday 20th July 2025, immediately following the Crew Parade.

Captains' Dinner Venue

The Captains' Dinner will take place at the Music Hall, Union St, Aberdeen AB10 1QS at 19:00 on Saturday 19th July 2025.

Sail Training International Race Office

STI Race Office will be located in the Event Centre, Regent Centre, Regent Road, AB11 5NS.
W3W: ///juror.slips.cable

Post Offices

Castlegate Post Office, 17 Union Street, AB11 5BU.
Opening hours: Mon- Sun 7am-11pm.

ABERDEEN



St Nicholas Post Office, Unit E5, St Nicholas Centre, AB10 1HW. Opening hours: Mon – Sat 9am-5.30pm, closed on Sundays.

Banks

Virgin Money, 62 Union Street St Nicholas, Aberdeen AB10 1WD

Opening hours: Friday 09:30 - 16:00, Saturday 09:30 - 14:00, Sunday Closed, Monday 09:30 - 16:00

TSB Bank, 7, 21a St Nicholas Street, AB 10 1HE. Opening hours: Mon, Tues, Thurs 9am-5pm, Wed 10am-5pm, Sat 9am-3pm, closed on Fridays and Sundays.

Barclays Bank, 163-165 Union Street, AB11 6SL. Opening hours: Mon – Fri 9.30am-4.30pm, Sat 9.30am-1pm, closed on Sundays.

HSBC, 95-99 Union Street, AB11 6BD. Opening hours: Mon – Fri 9.30am-4.30pm, Sat 9.30am-1pm, closed on Sundays.

Bank of Scotland, 48 Upperkirkgate, Aberdeen, AB10 1BA. Opening hours: Mon – Thurs 9am-5pm, Sat 9am-3pm, closed Fridays and Sundays.

Churches

St Mary of the Assumption Cathedral, Aberdeen's principal Catholic cathedral, 16-20 Huntly St, Aberdeen, AB10 1SH. Opening hours: Mon – Sat 7am-9pm, Sundays 7.30am-8pm.

Gilcomston Church, Evangelical church, Union St, Aberdeen, AB10 1TP. Opening hours: Monday – Saturday 9am-4pm, Sundays 6.30am-8pm.

St Machar's Cathedral, The Chanonry, Aberdeen, AB24 1RQ. Opening hours: Monday – Sunday 9.30am-4.30pm.

Places of Worship

Crown Terrace Mosque, 16 Crown Terrace, Aberdeen, AB11 6HD. Opening hours: Monday – Sunday 12pm-10pm.

Aberdeen Mosque and Islamic Centre, 45 Frederick St, Aberdeen, AB24 5HY. Opening hours: Monday – Sunday 24 hours.



Aberdeen Synagogue and Jewish Community Centre, 74 Dee St, Aberdeen, AB11 6DS. Opening hours: Saturday 9am-5pm. Closed Sun – Fri.

Aberdeen Gurudwara, St Ninian's Place, Aberdeen, AB24 1YA. Opening hours: Mon – Sat 6am-8am and 6pm-8pm. Sundays 10.30am-1pm.

Pharmacies

Superdrug Pharmacy, E1, St Nicholas Centre, St Nicholas St, AB10 1HW. Opening hours: Mon – Sat 9am-6pm. Closed Sunday. Telephone number: 01224 647440.

Charles Michie's Pharmacy, 391 Union Street, AB11 6BX. Opening hours: Mon – Sat 9am-5.30pm. Closed Sunday. Telephone number: 01224 585312.

Morrisons in-store Pharmacy, 215 King St, Aberdeen AB24 5DA. Open Sunday 9am – 5pm

Hospital

Aberdeen Royal Infirmary, General hospital, Foresterhill Health Campus, Foresterhill Rd, Aberdeen AB25 2ZN. Open 24 hours. Telephone number: 03454 566000.

4.2 Town Information

Culture in Aberdeen

Aberdeen Art Gallery, Schoolhill, Aberdeen, AB10 1FQ. Opening hours: Mon – Sat 10am-5pm, Sundays 11am-4pm. Free entry.

Home to one of the finest collections in the country, the collection spans 700 years and includes works by local, national, and international artists, designers, and makers. Highlights include works by Joan Eardley, the Scottish Colourists, Francis Bacon, Tracey Emin, Claude Monet, and Barbara Hepworth. Current exhibition: Monsters of the Deep: Science Fact or Fiction.

Aberdeen Maritime Museum, Shiprow, Aberdeen, AB11 5BY. Opening hours: Mon – Sat 10am – 5pm, Sundays 11am-4pm. Free entry.

Close to the busy harbour, Aberdeen Maritime Museum tells the story of the city's long and dramatic relationship with the sea. From the earliest days of trading, fishing and shipbuilding to offshore energy and life in the industry, and Aberdeen's place today as a leader in global energy transition. Current exhibition: Tales from the Tall Ships.



Provost Skene's House, Guestrow, Aberdeen, AB10 1AS. Opening hours: Mon, Thurs, Fri, Sat 10am-5pm, Sunday 11am-4pm, closed Tuesday and Wednesday. Free entry.

Visit the oldest house in Aberdeen dating back to 1545. Inside, the exhibition celebrates the pioneering people of Aberdeen and the North-East of Scotland who have not only shaped the city, but have also helped transform the world.

Gordon Highlanders Museum, St Lukes, Viewfield Road, Aberdeen, AB15 7XH. Opening hours: Tues – Sat 10am – 4.30pm.
Entry price: £12 (adults), £6 (child), £9 (concession) £24 (family).

Explore the two-hundred-year history of the men who made one of the most famous regiments the British army has ever seen – **The Gordon Highlanders**.

Aberdeen Science Centre, 179 Constitution Street, Aberdeen, AB24 5TU. Opening hours: Mon – Sun 10.30am – 4.30pm.
Entry price: £12.65 (adults), £8.25 (child), £10.45 (concession), £38.50 (family).

Discover a world of exploration, excitement and wonder at Aberdeen Science Centre. Enjoy more than 65 amazing interactive exhibits, set across six innovative and awe-inspiring zones.

Dunnottar Castle, Stonehaven, AB39 2TL. Opening hours: Mon – Sun 9am-6pm, last entry at 5pm.
Entry price: £13 (adults), £11.50 (students), £6 (child).

Perched upon a 160-foot rock and surrounded on three sides by the North Sea, these dramatic and evocative cliff-top ruins were once an impregnable fortress of the Earls Marischal, once one of the most powerful families in Scotland.

Greyhope Bay Centre, Torry Battery, Greyhope Road, AB11 8QX. Opening hours: Wed – Sun 10am – 4.30pm

Made from converted shipping containers, Greyhope Bay Centre offers spectacular views of the coast and the chance to spot bottlenose dolphins in the bay all while enjoying an ethically sourced cup of coffee.

National Trust for Scotland, www.nts.org.uk/visit/things-to-do/north-east-castle-trail. Entry prices vary.

Known as Scotland's Castle Country, Aberdeenshire has more castles per acre than anywhere else in the UK. Picturesquely situated and packed with history, you can visit some of the best castles and historic houses during Tall Ships Aberdeen.



Historic Environment Scotland, www.historicenvironment.scot/visit-a-place/search-results?r=1024. Entry prices vary.

Explore captivating castles, awesome abbeys, fantastic forts, and so much more across the North-East of Scotland. Come rain or shine, there's something for everyone to enjoy.

Tours

Scot Free Tours, www.scotfreetours.com. Ticket price: free.

Enjoy free walking tours of Aberdeen city centre, Old Aberdeen, and the Green from the top-ranked tour provider in Aberdeen with 500 five-star reviews on TripAdvisor.

Nuart Aberdeen

City-wide. Opening hours: 24/7. You can use our interactive map: www.aberdeeninspired.com/festival/nuart-aberdeen/nuart-interactive-map to plan your own tour around the city. Free entry.

Private tours are available upon request – please reach out to us at tours@nuartaberdeen.co.uk. We avoid stairs and strive to make the tours as accessible as possible.

Nuart is a vibrant street art festival that brings global artists to transform the city with stunning murals and installations, creating a lasting cultural legacy. Dotted around the Granite City, you will find incredible artistry scattered on corners, down the little nooks and crannies of the city and draped over buildings. Our tours take a dive deep into the history and evolution of the city's murals, showcasing both the latest pieces and beloved older works that have stood the test of time.

Invisible Cities, www.invisible-cities.org/aberdeen-walking-tours/. Ticket prices vary.

A social enterprise that trains people who have experienced homelessness to become walking tour guides of their own city, Invisible Cities shows you the unique side of Scotland's granite city with an experienced local guide.

Walking Tours In... Aberdeen, walkingtoursin.com/scotland-tours/aberdeen/. Ticket price: £12

Discover Aberdeen with your local guide every day all year round with one of our passionate, local guides. Maximise your time in Aberdeen and join our daily 2pm Aberdeen City Tour, discovering the key sights, history, and our amazing street art too.

Aberdeen Adventurer Open Top Bus Tour, www.xploredundee.com/aberdeen-adventurer.

Ticket Price: £15 (adult), £10 (concession), £8 (child), under 5s free

ABERDEEN



Introducing the Aberdeen Adventurer. Climb up top to enjoy the best views, feel the breeze in your hair, and bask in the blue skies of one of Scotland's sunniest cities. There is so much to see and do as you travel around the city.

Aberdeen Maritime Museum Discovery Tours, Shiprow, Aberdeen, AB11 5BY.
Every Saturday, 2pm

Explore the story of Aberdeen's long and evolving relationship with the North Sea.
Parks

Aberdeen has a wide range of beautiful parks and green spaces. They all have facilities and features for all ages whether you wish to enjoy hobbies, sport, play, or relax.

www.aberdeencity.gov.uk/services/leisure-culture-and-parks/parks-and-gardens.

Trails

Best of Aberdeen Trails

Aberdeen City Council have produced a series of free trail guides to help you explore the beautiful and historic city of Aberdeen. Follow the maps to discover historical and natural gems around the city. Browse our trails and download the maps here: www.aberdeencity.gov.uk/services/leisure-culture-and-parks/free-walks-and-trails-aberdeen.

Visit Aberdeenshire

Welcome to Aberdeen, Scotland's third largest city is a compact city with wide open spaces; walk along a mile long stretch of golden beach and admire the sparkling granite architecture that we are so famous for. Step back in time in Aberdeen's old town as you visit the cobbled roads and historic buildings in Old Aberdeen or enjoy the bustling city with a vibrant foodie scene - including big names like Mackie's and BrewDog. You can find trails and recommendations for your time in Aberdeen here: www.visitabdn.com.

Aberdeen Inspired Website

Aberdeen Inspired is Aberdeen City's BID (Business Improvement District) and we work for and with almost 700 retailers, cafes, restaurants, businesses, and leisure facilities within the heart of Aberdeen. Hosting key events that bolster city commerce, such as Shop Aberdeen, Aberdeen Restaurant Week, Nuart and Umbrella Project, we strive to create a vibrant and thriving city centre where people want to visit, spend time and stay.

Visit AberdeenInspired.com or follow us on [Instagram](https://www.instagram.com/abdninspired) (www.instagram.com/abdninspired) to find out what's on in the city. You can also find unique deals and promotions for you and your team on our website too, such as tours, exclusive restaurant menus and cocktails or even a cheeky tattoo!

ABERDEEN



Health & Wellness in Aberdeen

Health and wellness:

Aberdeen and Aberdeenshire offer a treasure trove of parks, gardens, and nature reserves.

Duthie Park

Located in the heart of Aberdeen, Duthie Park is a blooming gem spanning 44 acres. Established in 1883, the park boasts the David Welch Winter Gardens, one of Europe's largest indoor gardens, housing a diverse collection of exotic plants from around the globe.

Seaton Park

Adjacent to the historic St Machar's Cathedral in Old Aberdeen, Seaton Park is a spacious green area that bursts into colour during spring. The formal flower beds are precisely planted with a variety of seasonal blooms, and the park's riverside walks along the River Don offer a blissful environment for visitors.

Hazlehead Park

Hazlehead Park in Aberdeen, is a spacious green area featuring formal gardens, woodland walks, and a renowned rose garden. In spring, the park's walled garden bursts into colour with a variety of seasonal flowers, offering a peaceful retreat for visitors.

Cruickshank Botanic Garden

Situated within Old Aberdeen, the Cruickshank Botanic Garden is a tranquil 11-acre haven showcasing a vast array of plant species. In spring, the garden flourishes with colourful rhododendrons, azaleas, and a variety of bulbs, providing an ideal environment for contemplation and escapism.

Johnston Gardens

This secret treasure in Aberdeen is a small, secluded garden known for its enchanting beauty. In spring, Johnston Gardens features a stunning display of flowering shrubs, including heathers and rhododendrons, set around a series of ponds and rustic bridges.

Forvie Sands Nature Reserve

For something a little more adventurous, visit the Forvie National Nature Reserve in Collieston. With easy trails across dramatic sand dunes and a chance to spot seals and seabirds, it's both an exciting and educational outing for little explorers.

Swimming pools

There are five 25m swimming pools across the city. Details can be found at www.sportaberdeen.co.uk/activities/swimming#tab_4.

There is also a 50m pool at the Aberdeen Sports village. Details can be found at www.aberdeensportsvillage.com/.

ABERDEEN



Going Out in Aberdeen Restaurants

Mackie's 19.2 Ice Cream Parlour, 7, Marischal Square, Broad St, AB10 1BL. Opening hours: Sun – Wed 12pm-9pm, Thurs and Fri 12pm-10pm, Sat 11am-10pm.

Come and enjoy your favourite from over 30 flavours of ice cream in cones, tubs, sundaes, milkshakes or with freshly made crepes and waffles.

Maggie's Grill, Unit 2, Marischal Square, AB10 1BL. Opening hours: Tues – Sat 12pm-9pm, Sunday 12pm-8pm.

Enjoy wonderful home cooked soul food goodness. BBQ and Cajun cooking brought back from New Orleans and created with locally sourced ingredients.

The Silver Darling, Pocra Quay, AB11 5DQ. Opening hours: Mon – Sat 12pm-9pm, Sunday 12pm-8pm.

Dine with panoramic views of Aberdeen Harbour and beach coastline in Aberdeen's former customs house. Enjoy Scottish seafood dishes with a French flavour.

The City Bar and Diner, 37 Netherkirkgate, AB10 1AU. Opening hours: Mon – Tues 10am – 6pm, Wed – Thurs 10am – 9pm, Fri – Sat 10am – 10pm

Start the day the city way! Sample fresh home cooked meals, using local produce, hot coffee, home bakes, craft ales and cocktails, all served by friendly staff in a relaxing atmosphere.

Cup Tea Salon, 9 Little Belmont Street, AB10 1JG. Opening hours: Mon – Thurs 10am – 3.30pm, Fri 9.30am – 3.30pm, Sat 9.30am – 4.30pm, Sun 10am – 4pm

A premium café situated in a pretty, cobbled street in the centre of Aberdeen with a focus on tea, afternoon tea and a fabulous brunch!

Shiprow Village. Opening hours vary

Set on one of the oldest streets in Aberdeen; rich in history and stories waiting to be told, Shiprow Village aims to salute what was once a local trade hotspot. Eat Food, Drink Drinks, Enjoy People!

The Atrium, 50 Chapel Street, AB10 1SN. Opening hours: Mon-Tues 4pm – 10pm, Wed – Thurs 12pm – 10.30pm, Fri – Sat 12pm – 1am, Sun 12pm – 9pm

As a family-run restaurant in the heart of Aberdeen city centre The Atrium are committed to providing exceptional service, warm hospitality and delicious food that will leave a lasting impression.



Pubs

Ma Cameron's, Little Belmont St, AB10 1JG. Opening hours: 11am-12am.

Aberdeen's oldest pub dating from 1746, Ma Cameron's is a former coaching inn with snugs and a rooftop beer garden serving cask ales and a pub menu.

Brewdog, 5-9 Union St, AB11 5BU. Opening hours: 11am- 12am.

Founded just 16 miles from Aberdeen, Brewdog is a spacious bar with 28 craft beer lines and a fantastic array of hand-made speciality coffee, plus a full food menu from their epic kitchen team.

The Grill, 213 Union St, AB11 6BA. Opening hours: Mon – Sat 10am-12am, Sunday 12.30pm-12am.

The Grill is a typical Scot's standing pub and offers a range of cask and craft beers. As a former World Whisky Bar of the Year, the whisky selection is second to none.

Bars

Soul Bar, 333 Union St, AB11 6BS. Opening hours: Mon-Sun 12pm-12am.

An impressive space, converted from a historic church and still retains some of its original features including stained glass windows, high ceilings and church organ. Enjoy outdoor seating, great cocktails, and live performances.

Ninety-Nine, 1 Back Wynd, AB10 1JN. Opening hours: Fri – Sun 12pm-12am, Mon and Thurs 5pm-12am, closed Tues and Wed.

Welcome to your neighbourhood cocktail bar. Serving fresh Italian and Mediterranean food to perfectly compliment the drinks that the team have been delivering for years.

The Tippling House, 4 Belmont St, AB10 1JE. Opening hours: Tues – Thurs 4pm-1am, Fri 4pm-3am, Sat 1pm-3am.

Enjoy cocktails and casual dining in The Tippling House, a subterranean venue with a charming Italo-style décor, cosy booths, and tweed fabric.



5. CAPTAINS' PROGRAMME

5.0 Captain's Kilt Try On

- Saturday 19th July
- 10:00-12:00 or 13:00-15:00
- Georgian Dress Hire, Leaside House, 64 Leaside Road, Aberdeen, AB25 1TW
- Capacity: 6
- Book your place via the International Crew Programme Eventbrite booking link.

Georgian Dress Hire has been offering full formal wear hire and bespoke/made-to-measure services in the heart of Aberdeen since 1971. We invite you to come and try on a kilt and have your photograph taken. Experience the elegance and tradition of our meticulously crafted garments. Join us at Georgian Dress Hire and capture the moment in style!

5.1 Captains' Dinner

- Saturday 19 July at 19:00
- Music Hall, Union Street, Aberdeen, AB10 1QS
- Invitation (+ 1 guest)
- Dietary Requirements must be shared in advance to LO

Transport Arrangements:

18:30: Pick up: Market Street at Palmerston Road, AB11 5PP

23:45: Pick up: Music Hall, South Silver Street, Aberdeen, AB10 1QS

5.2 Captains' Briefing

- Monday 21 July at 15:00
- Aberdeen Town and County Hall Broad Street/Union Street, Aberdeen, AB10 1AQ
- No transport arrangements

ABERDEEN



6. CREW PROGRAMME

6.1 Crew Party

Tall Ships Aberdeen presents...

THE CREW PARTY!

Sunday 20th July 2025

7pm - 11pm

Regent Quay

Calling all Crew to celebrate the incredible journey you've been on at the Crew Party!

BONGO'S BINGO – Music, entertainment and Crew surprises!

AMAZING MUSIC – DJ and dancing

SCOTTISH CEILIDH ON THE QUAYSIDE

EPIC FOOD & DRINK

GOOD VIBES ONLY – Chill Zone

Your Sail Training International wristband gives you free entry to the evening concerts.

ABERDEEN





ID Requirements for Alcohol (Challenge 25)

The Crew Party will operate under the **Challenge 25 Scheme**, ensuring only those aged **18 or over** can purchase or consume alcohol.

What You Need to Know:

- 1) If you're **under 25** (or lucky enough to look under 25!), you'll need to **carry valid ID** to prove you're over 18.
- 2) **Accepted Forms of ID (International):**
 - a. A valid Passport.
 - b. A European Photo Card Driving Licence.
 - c. A National Identity Card issued by European countries, Norway, Iceland, Liechtenstein, or Switzerland.
 - d. A Biometric Immigration Document.
- 3) **Additional Accepted Forms of ID (UK-based only):**
 - a. Photographic ID with the **PASS** Hologram (e.g., YoungScot or Citizen Card).
 - b. A British Military Identity Card (photo must NOT have a red cross).

ABERDEEN



6.2 Crew Parade

Aberdeen loves a Parade! Expect the streets to be lined with well-wishers as the parade makes its way through the City Centre to the Main Stage area for the Prize Giving.

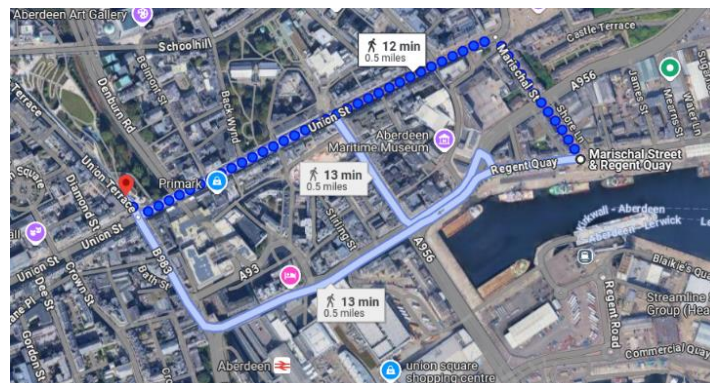
The parade will feature the Royal Marines Band and vibrant carnival performers.

Parade Meeting Point

- **Date & Time:** Sunday 20 July at 16:00 (Muster 15:00)
- **Meeting Point:** Union Terrace (facing His Majesty's Theatre) and Union Terrace Gardens upper level

Getting to the Meeting Point

The meeting point is only 12-15mins walk from the Quayside. The preferred route is by using Marischal Street or Market Street and then heading along Union Street and then turning right on to Union Terrace.



Parade Route

The parade will be led out by the Royal Marines Band with nautical carnival costumes behind and then the crews.

The parade will proceed past iconic Aberdeen landmarks:

- His Majesty's Theatre
- Aberdeen Art Gallery
- Marischal College
- Town House
- The Tolbooth Museum
- Castlegate

ABERDEEN



Route: Union Terrace, Schoolhill, Upperkirkgate, Broad St, Union St, Marischal Street, Regent Quay, and Peterson Seabase.

Transport Arrangements

No special transport arrangements – walking distance from the Quayside.

6.3 Prize giving

- Sunday 20 July at 17:00
- Main Stage, Peterson Seabase
- The Crew Parade finishes in Peterson Seabase prior to Prizegiving allowing all the crew to assemble in front of the main stage

6.4 Crew Activities

Experience the spirit of Scotland with the Tall Ships Aberdeen International Crew Programme!

Our specially curated International Crew Programme offers a vibrant taste of Scottish heritage and hospitality. Highlights include:

- Tall Ships Aberdeen Sports Festival – featuring traditional Highland Games for a true Scottish challenge!
- Seabird Safaris – explore the stunning coastal wildlife of the North Sea.
- Energetic Group Exercise Classes – stay active and connect with fellow crew members.
- Historical Walking Tours of Aberdeen – uncover the rich stories and hidden gems of this historic city.

A list of activities which the crew are encouraged to take part in can be found here:



ABERDEEN



Scan the QR code to see activities, descriptions, locations, days, dates, times and transport arrangements. Please note that for some activities crews need to register using the QR code above.

Crew will also have FREE ACCESS to the sold-out Quayside Concert programme, featuring Kaiser Chiefs, and Ministry of Sound Classical. Follow the signs to the “Crew/VIP entrance” and show your event wristband to get in.

ABERDEEN



7. CITY CULTURAL PROGRAMME

Monsters of the Deep

Aberdeen Art Gallery, Schoolhill, Aberdeen, AB10 1FQ

£10 adults / £7 Friends of AAGM and concessions

£14 exhibition pass / children aged 12 and under free

To book go to www.aagm.co.uk

Legend, folklore, and modern-day science combine in *Monsters of the Deep: Science Fact or Fiction?* This summer, journey from the medieval mind to the modern-day mysteries of the ocean. Take a deep breath and plunge down into the dark murky depths as we seek to explore the unexplained.

From a terrifying Feejee mermaid, to the spindly legs of a giant Japanese spider crab, there are lots of strange and wonderful things to see in *Monsters of the Deep*. Come face to face with the skull of a terrifying killer whale, marvel at the double-tusked skull of a narwhal and the tooth of an extinct megalodon. Examine eerie deep-sea specimens from across the globe and see some of the technological tools scientists use today to explore the bottom of the ocean – then you decide what lies beneath.

[Monsters of the Deep: Science Fact or Fiction?](#)

From the Archive: Aberdeen Harbour

Aberdeen Art Gallery, Schoolhill, Aberdeen, AB10 1FQ

Free

The archive of the Port of Aberdeen contains hundreds of photographs that bear witness to the technological change that has taken place on the quayside over the past 100 years. This exhibition, timed to coincide with the Tall Ships Races weighing anchor in Aberdeen this summer, displays some of these fascinating images from the collection. Not only do they illustrate how much has changed, but also how familiar many of the features are to the modern eye.

[From the Archive: Aberdeen Harbour](#)

Tales of the Tall Ships

Aberdeen Maritime Museum, Shiprow, Aberdeen, AB11 5BY

Free

To celebrate the arrival of the spectacular Tall Ships fleet in Aberdeen, this exhibition of paintings, ship models and photography highlights some of Aberdeen's historic and cultural ties to these iconic sailing vessels, from shipyard construction to racing and competition.

ABERDEEN



Tales of the Tall Ships

Music Hall Stepping in Screen: David Cass – Tall Ships Commission

Tuesday 3 June–Thursday 26 July

Tue–Sat 9:30–18:00 and when open for performances

Music Hall, Union Street, Aberdeen, AB10 1QS

Free / suitable for all ages

What happens at Earth's poles affects us all - combined, they are our planet's thermostat. Loss of ice in these places has a direct impact on our seas globally; and weather, perhaps the principal consideration for all who go to sea, becomes increasingly unpredictable. This generative artwork explores global warming and ice-melt, with the Tall Ships Races as an anchor.

CLAN Cancer Support BookBench Trail

July - September

Various locations

Free, suitable for all ages

CLAN Cancer Support, the north-east's leading cancer support charity, has partnered with Wild in Art once again to bring an exciting new art trail to the North East, Moray, Orkney and Shetland. The BookBench Trail gives access to a free and immersive art exhibition with BookBench sculptures designed by some of the country's most talented artists.

CLAN chose the BookBench sculpture, which depicts an open book, because of the charity's lifeline listening support service which enables anyone impacted by a cancer diagnosis to open up and tell their story.

We hope the sculpture, which can seat two adults, will encourage people to take time to reflect on their wellbeing as they enjoy discovering the artwork on the trail.

clancancersupport.org/the-book-bench-trail

Fish 'n' Ships

Saturday 12 July – Wednesday 23 July

Popping up in and around Aberdeen

Free / suitable for all ages and abilities

Aberdeen Young Ambassadors will be popping up, in and around the city, to trade artworks in exchange for non-recyclable plastics.

The Young Ambassadors are young people (aged 10-18) living in Aberdeen who are passionate about bringing change to Aberdeen City. They use creative approaches to explore and explain their ideas and goals. They want to bring young people with them, encourage young people to share their voices, and bring their ideas to people

ABERDEEN



who influence change. The Young Ambassadors scheme is delivered by Aberdeen City Council's Creative Learning team.

www.aberdeencity.gov.uk/creative-learning

University of Aberdeen: Explore the Zoology Museum

Monday 14–Thursday 24 July / 10:00 – 16:00

Zoology Museum, Zoology Building, Tillydrone Avenue, Aberdeen, AB24 2TZ

Free / suitable for all ages

The University Collections includes extensive Zoological specimens, some of which are currently on loan to Aberdeen Art Gallery's *Monsters of the Deep* exhibition. Many more creatures from the seas are on display in the Zoology Museum where you will see sea turtles, whale and dolphin skeletons, puffer fish, penguins and more! The displays are worldwide in scope, including taxidermy, skeletal material, study skins, fluid-preserved specimens, and models.

www.abdn.ac.uk/collections/visit-us/zoology-museum

Fittie Arts and Crafts Fair

19 July / 10:00 – 16:00

Fittie Community Hall, New Pier Road, Fittie, AB11 5DR

Free, drop in / Suitable for all ages

Discover unique handmade arts and crafts created by local artisans. Stalls include sea-themed jewellery, handmade candles, and rustic charm creations for the home. Fittie themed merchandise is also on offer along with a fundraising stall for the RNLI.

www.fittietrust.org.uk

Pirates

19 July – 20 July / 14:00 and 19:00

His Majesty's Theatre, Rosemount Viaduct, Aberdeen AB25 1GL

£17.50-£12.50 / Recommended for ages 7-12 years and their families

Ahoy, Aberdeen, all on board for Scottish Dance Theatre's family show Pirates! as we sail into The Tall Ships Races 2025!

Join best friends Tom and Daisy as they are swept away into the world of Captain Sandy Rogers and her rowdy crew! Together, they will go on an unforgettable adventure featuring a bunch of slippery zombies, strange underwater creatures, and a final, all-out duel with the wicked Captain O'Greed!

www.aberdeenperformingarts.com/whats-on/pirates

Watercolour Seascapes for Beginners with Emma Louise Wilson

Greyhope Bay Centre, Torry Battery, Greyhope Road, Aberdeen, AB11 8QX

19 July / 18:30 – 21:00



£28 / Adults

Join award winning Deemouth Artist, Emma Louise Wilson, at the Greyhope Bay Centre as she guides you through the beginner techniques of watercolour painting with the sweeping views of Aberdeen's coast as your inspiration.

www.eventbrite.co.uk/e/watercolour-seascapes-for-beginners-with-emma-louise-wilson-tickets

The Power of the Sea: stories and poems from Pushing Out the Boat magazine

20 July / 14:00 – 16:00

The Blue Lamp, 121 Gallowgate, Aberdeen, AB25 1BU

Entry by donation / Adults and young people aged 11+

Immerse yourself in an ocean of talent at a live showcase with writers and their work from Pushing Out the Boat, North East Scotland's very own magazine of creative writing. Featuring sea-themed stories and poems from contributors in the iconic atmosphere of Aberdeen's Blue Lamp venue with readings from the stage and drinks from the bar. A relaxing break from hoofing it round all those wonderful tall ships.

www.pushingouttheboat.co.uk

Coastal Discovery Day

21 July / 10:00 – 16:00

Greyhope Bay Centre, Torry Battery, Greyhope Road, Aberdeen, AB11 8QX

Free / Suitable for all ages

Visit Greyhope Bay to speak with organisations connected to the coast and local area to learn about their work protecting the Aberdeen coast and species that call it home. As part of Coastal Discovery Day, we will also be hosting specific ticketed events, including coastal discovery beachcombing, and a litter pick.

www.greyhopebay.com

Coastal Bird Walk

21 July / 13:00 – 14:30

Greyhope Bay Centre, Torry Battery, Greyhope Road, Aberdeen, AB11 8QX

£10 adult / £5 child / Suitable for all ages

Over 200 species of birds have been recorded from Greyhope Bay, including gulls, gannets, and goldfinches. Join us for a beginner-friendly birdwatching walk from the harbour to Girdleness Lighthouse to look for, and learn about, the amazing birds who visit Aberdeen. A free mini coastal bird guide is included with each ticket.

www.eventbrite.co.uk/e/coastal-bird-walk-tickets

Coastal Discovery Beachcombing

21 July / 15:00 – 16:30

ABERDEEN



Greyhope Bay Centre, Torry Battery, Greyhope Road, Aberdeen, AB11 8QX
£6 adult / £4 child / Suitable for all ages

Join Jack Elphinstone, an Aberdeen City Council Countryside Ranger, and our Greyhope Bay team, as we explore the amazing beach by the Greyhope Bay Centre! During this guided beach walk, we'll discover what has been washed up on the shore by the Summer tides. We'll also spend some time identifying your finds and learning more about the creatures that call our coast home. What will you find?

www.eventbrite.co.uk/e/coastal-discovery-beachcombing-tickets

Beyond Van Gogh: The Immersive Experience,

P&J Live, E Burn Rd, Aberdeen AB21 9FX. Opening house: Monday to Sunday 10am - 7pm. Tickets online here:

www.axs.com/uk/series/25662/beyond-van-gogh-at-p-j-live-tickets?skin=aberdeen

Produced by Annerin Productions and Paquin Entertainment Group, Beyond Van Gogh: The Immersive Experience blends more than 300 of the post-Impressionist icon's paintings with cutting-edge technology and a specially curated musical soundtrack to tell the story of one of history's most influential artists, with people able to wander through iconic works - including *The Starry Night*, *Sunflowers* and *Terrace of a Café at Night* - as they came alive around them.

Umbrella Project

Shiprow, Aberdeen, AB11 5BY. Opening hours: 24/7. Free entry.

The Umbrella Project is a partnership initiative between the ADHD Foundation and Aberdeen Inspired, showcasing colourful umbrella installations in the city centre to raise awareness of neurodiversity, which includes ADHD, autism, dyslexia, dysgraphia, dyspraxia, and Tourette's Syndrome. The umbrella installation brightens our city centre streets, as well as conveying messages about ADHD and autism, and raising awareness of the support that is available to individuals and families.

Iconic Aberdeen Letters

Union Terrace Gardens, AB10 1WE. Open 24/7. Free entry. Wheelchair accessible.

Since the £28.3million refurbishment, Union Terrace Gardens is a vibrant hot-spot for Aberdeen locals. Why not sit and enjoy the renovated open green space in the heart of Aberdeen City. The gardens feature vibrant foliage, modern exterior architecture and unique cafes and restaurants, as well as extensive seating, refurbished historic arches and the iconic Aberdeen Letters. Just a short 10-minute walk from the harbour, grab a unique selfie in the newly refurbished gardens while you are visiting.

Please see section 4.2 for listing of museums and galleries.

ABERDEEN



8. LIAISON SYSTEM

8.1 Liaison System

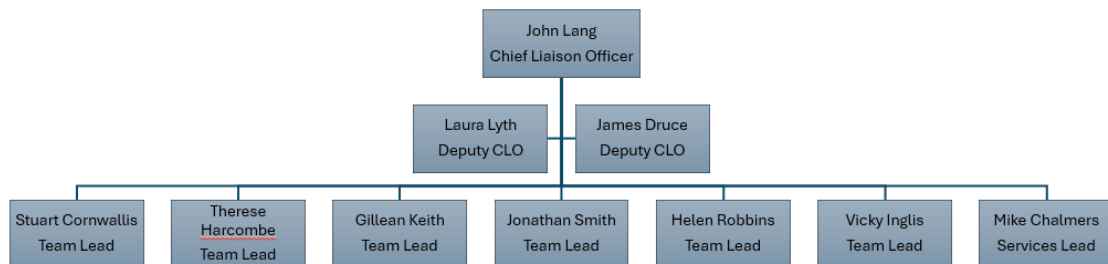
All Ships will have at least one dedicated Ship Liaison Officer (SLO) who will greet Ships upon arrival at their berth in Aberdeen. The SLOs will be split into teams with a Team Leader and each team being responsible for looking after 8-9 Ships of varying sizes. There will also be a Services team responsible for providing all services to the ships.

Your Chief Liaison Officer and the SLO volunteer team are committed to providing full support to you and your crew during your visit to Aberdeen. They will brief you on all activities, assist you in locating venues and travel to activities, support your travel to and from the ship on crew change day, and help with any ship servicing or technical support needed.

Please note: All ship servicing and deliveries must be coordinated through the Ship Liaison Officer team. Provision of Fuel, Tank Emptying, Water (only for those on Quayside) and any request for support must be booked using the Ship Services request form. This can be completed by:

- Completing the Form using the QR code in Section 9.1 below

The SLO team structure:



8.2 Name & contact details of Chief Liaison Officer

Aberdeen's Chief Liaison Officer (CLO) is **John Lang** who can be contacted at:

Email: J-lang@tallshipsaberdeen.com

Mobile number: +44 (0)7702910029

John will be based in the Liaison Office on the first floor of the Event Centre headquarters in the Regent centre. W3W: ///juror.slips.cable

There are two Deputy Chief Liaison Officers on an on-call basis and one Services Team Lead.



The generic email for the CLO team is: CLO@tallshipsaberdeen.com

8.3 Location of Liaison Office (Appendix 5 – Tall Ships 2025 Aberdeen – Event Map)

The Liaison Office is located at the Regent Event and Crew Centre:

First Floor, Regent Event Centre, Regent Road, AB11 5NS

8.4 Deliveries

Vehicles will not be allowed onto the quayside during public opening hours. This means from Sat 19th July – Tue 22 July all vehicles must be clear of the quayside by 07:30 and no vehicles will be allowed access till closure of the quayside at 23:00 (we may be able to give access to some areas from 20:30 but can't be guaranteed). All vehicles must report to the Aberdeen Tall Ships Deliveries Yard from which they will be called forward to quayside and given specific directions to the relevant quay.

Please advise your Ship Agent if you are using one that they must use this procedure too, otherwise deliveries may be rejected upon arrival.

All Deliveries for Ships must be directed to the following address:

Name of Ship
Aberdeen Tall Ships Deliveries Yard
Clyde Street
Albert Quay
Aberdeen
AB11 5PT
United Kingdom

W3W: ///tester.squad.senior

Please complete the following form to arrange all deliveries:

Click here: [ATS2025 Show day Delivery Registration](#)

View here: <https://form.jotform.com/251462795160358>

ABERDEEN



Scan here:



Otherwise, tell your Ships Liaison Officer you expect a delivery, and they will inform the Yard.

Your SLO will be informed when the delivery arrives. Small deliveries and packages will be brought to the Liaison office in the Regent Event Centre. Larger deliveries must be collected from the yard or can be delivered to the ship outside of event hours. Trolleys will be available from the Event Centre.

Deliveries outside of the event opening hours can be directed from the yard to the ship but must first come to the yard to get clearance to proceed to the quayside.

The Delivery yard is about 300m walk from the pontoons where the C and D vessels are berthed.

ABERDEEN



9. SHIP SERVICES

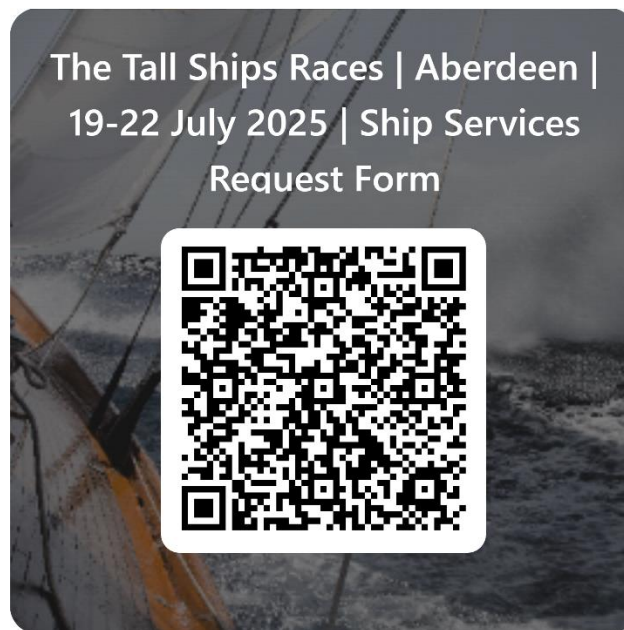
To ensure that all ships are serviced prior to opening to the public, the Tall Ships Team request that **all ships arrive in to Aberdeen on Friday the 18th of July**.

All ship services, including Fuel, Water, Tank Emptying, Repairs/Technical Issues, and other requests, must be submitted using the "Ship Services Request Form".

We kindly request that this form is completed and submitted before leaving Dunkirk to help us prepare for your arrival and ensure smooth coordination of all services

How to Submit Your Request:

- Scan the QR code below (also in Appendix 1) to access the Ship Services Request Form.
- Alternatively, you can use the following link:
bit.ly/TheTallShipsRacesAberdeen-ShipServicesRequestForm



9.1 Fuel

Fuel will be supplied by local fuel supplier and will be available for all ships via mobile tanker from the quayside. Ships arriving on Friday will be able to get fuel from a dedicated fuel berth before moving to their permanent berth. Ships berthed against the quayside can be supplied with fuel at their berth but outside event opening hours. Ships rafted or on pontoons will not be able to get fuel at their permanent berth and must take fuel on arrival or on the Tuesday prior to departure.

ABERDEEN



On arrival VTS will also ask if you require fuel. We also hope to give you the fuel price at the Captains briefing in Dunkirk.

9.2 Water

Water will be available at all quaysides. On the pontoons this will be throughout the event from domestic hoses run down to the pontoon. On the quayside this will be from standpipes operated by Scottish Water Horizons and must be booked through the "Ship Services Request Form".

9.3 Tank Emptying

For the emptying of all tanks – Bilge Water, Grey water and Black Water, please request this through the "Ship Services Request Form". Tank Emptying will only take place outside of event opening hours and all ships are entitled to one tank emptying if required.

9.4 Electricity

On arrival in Aberdeen electrical hook up will be provided to all ships by the event services team. If you have any issues getting connected, please bring this to the attention of your Liaison Officer.

9.5 Waste

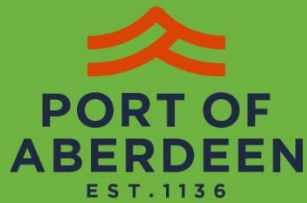
Waste collection for ships will be available on the quayside in dedicated recycling points

Color-coded Front-End Loader (FEL) containers for General Waste (Red) and Dry Mixed Recycling (Green) will be strategically placed quayside for the vessels to access. We would encourage vessels to offload as much disposal material on the Friday morning/afternoon (upon arrival) as possible.

There will be 24-hour access to these containers for vessels to offload their waste and recycling material. The quayside FEL's will be emptied on the Saturday, Monday and Tuesday (TBC) of each morning between 05:00 and 07:30 to ensure safe operation while the site is clear of the public.

ABERDEEN





Dry Mixed Recycling

Guide to Segregation



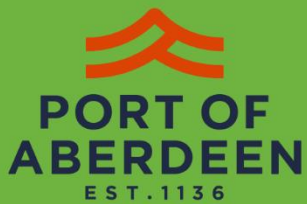
Containers are colour coded for ease of segregation - Green for dry mixed recycling.



Clear bags are required for the dry mixed recycling containers as it allows easy visual inspection to ensure that the contents are suitable for recycling.



If non - recyclables are visible, the bag can be redirected before contaminating other recyclable materials.



General Waste

Guide to Segregation



Containers are colour coded for ease of segregation - Red for general waste.



Using black bags for general waste is a common practice in many households and businesses.



Black bags are designed for non - recyclable waste and help keep the waste management process organised and hygienic.

ABERDEEN





9.6 Gas

Calor Gas can be collected from local suppliers. The Liaison Officer team can help with collection or delivery of gas.

9.7 Repairs / Technical issues.

The Liaison team have a list of vendors who are willing to support all kinds of repairs: Sails, Marine Diesel, Marine Electronics, Boat Building, chandlery etc. Please request through "Ship Services Request Form" and contact you Ship Liaison officer at the earliest opportunity who can support you with any repairs.

9.8 Stores

Cfine (Community Food Initiative North East) are a local supplier of fresh produce to several shipping companies in Aberdeen, including Northlink Ferries, and are located about 200m from the Event centre. Supplies can be delivered direct to the ship when quaysides are closed to the public or collected from their facility at 2-4 Poynerook Rd.

Their Fresh produce and stores are competitively priced, and all proceeds are ploughed back into the charity. Please place orders by completing the Cfine form in Appendix 2 which will be given to you at Dunkirk or on arrival in Aberdeen by your Liaison Officer.



Stores are also available from all the major supermarkets which are accessible by bus. Please speak with your Liaison Officer for bus routes and location of the major supermarkets.

Cfine – 4 Poynerook Road, 6 min walk from Event Centre

Morrisons – 215 King Street. 21 min walk from Event Centre open till 11pm

Aldi – Beach Boulevard Retail park. 25 min walk from Event centre open till 10pm

Asda – Beach Boulevard Retail park. 21 min walk from Event centre open till 10pm

Also, Tesco, Sainsbury, and Lidl but further from the Port.

9.9 Ship Agents (at own expense) Clarksons

Clarkson's will serve as a key agent for participating tall ships that wish to engage with a ship agent, offering support for various local requirements as needed to ensure comprehensive and efficient support for the participating vessels.

Agency Operations Contact:

Aberdeen Agency

aberdeen@clarksons.com

Tel: +44 (0) 1224 211500

ABERDEEN



10. CREW SERVICES

10.1 Crew Centre

Location (Appendix 5 – Tall Ships 2025 Aberdeen – Event Map):

First Floor, Regent Event Centre, Regent Road, AB11 5NS

You will be able to access:

- Laundry facilities
- Events in the International Crew Programme
- Luggage storage
- Toilets
- Tall Ships Aberdeen helpdesk
- Health and Wellbeing

10.2 Public Telephones

There are no public pay phones at the event

10.3 First Aid

Medical provision will always be available during the event, with roaming first aiders, ambulances, and medical treatment centres across the event site. Additionally, overnight provision will be available as required.

If you are unwell, or find someone in need of medical assistance, contact Event Control by calling 01224 469460.

In the event of an emergency, dial 999, and then contact Event Control where possible.

10.4 Laundry Facilities

- Crew Laundry Facilities will be located in the Crew Centre at the Regent Event Centre.
- 3 washing machines and 3 tumble dryers will be provided along with associated consumables.

10.5 Toilets and Showers

ABERDEEN



Our crew showers and restrooms are near the C and D Class berthing on Jamieson's Quay. Please use any of these references to guide you:

Google Pin: maps.app.goo.gl/PWFBJkrJFmnQLWRM8

W3W: ///buzz.abode.urgent

There are plenty of facilities for everyone to share but please be aware that during busy periods there may be a need to queue. The showers will be cleaned regularly, if anything is not up to your expectations, please advise the attendant on the door or your LO.

Showers will be operational 24 hours a day.

ABERDEEN



11. FORMS

11.1

Customs and Immigration

- All crew and trainees arriving into UK will require a Letter of Invitation which Clarksons, the event shipping agent, will provide. This is to make sure at the point of arrival at Aberdeen Airport they can provide correct evidence as to why they have travelled to Aberdeen and this will assist the Border Force Officials for speedy checks.
- Crew Activities. All crew activities will be booked via Eventbrite. Details can be found in International Crew Handbook.
- Ship Services Request form – Appendix 1
- Cfine fresh food ordering - Appendix 2

ABERDEEN



12. CRUISE- IN-COMPANY ARRANGEMENTS

12. Not Applicable

ABERDEEN



13. SAFETY OVERVIEW

13.1 General overview of the in-port safety arrangements and key details

As per the Port of Aberdeen's Emergency Response Plan, all vessels must be prepared to respond to onboard incidents effectively. In the event of any onboard emergency, vessels must immediately contact Aberdeen Coastguard on VHF Channel 16 or Aberdeen VTS on VHF Channel 12.

In addition to informing the Coastguard / VTS, the UK emergency services can be contacted directly by dialling 999 from any phone.

When calling, clearly state the nature of the emergency and ask for the required service (e.g. Police, Fire & Rescue, Ambulance, or Coastguard).

Provide your location as precisely as possible (e.g. vessel name and berth).

A Water Safety Plan has been developed specifically for the event, incorporating rescue capabilities and on-water coordination.

An Event Control room will be established in the Regent Event Centre and will be operational throughout event. The Event Control team will serve as the central point for coordination, safety oversight, and emergency liaison.

All participating vessels are reminded to review their onboard emergency procedures, ensure first aid kits and firefighting equipment are accessible and serviceable, and brief crew on actions to take in the event of an incident.

RNLI Water Safety at Tall Ships Aberdeen 2025

RNLI Aberdeen will provide Water Safety support and messaging throughout Tall Ships 2025 for visiting vessels and crew as well as members of the public visiting this fantastic nautical event.

A stand at the Discovery Zone for visitors to pick up on the latest information and guidance will be covered by RNLI Volunteers over the 4 days, and the Water Safety Team are available to support visiting vessels and crew with onboard sessions to highlight key information to new crew and existing crew.

Water Safety is at the core of RNLI with education across all ages available to allow everyone to be safe and have fun on or in the water.

RNLI flagship campaign "Float to Live" has over 50 successful case studies of how people have used the technique to either self-rescue or support themselves long enough to be rescued when they have found themselves unexpectedly in a life



threatening situation in the water. The actions in the poster provide everyone with a technique to improve their survival.

In addition to Float to Live, RNLI Water Safety messaging is centred around the 4 Key Messages of Stop and Think, Stay Together, Float and Call 999. Following this guide provides everyone the opportunity to Be Safe and Have Fun at or in the water, and also make the correct decisions when they have to respond when they or there are in danger and require rescue.



ABERDEEN





Struggling in the water?

Floating greatly increases your chances of survival.

Relax and try to breathe normally

Tilt your head back with ears submerged

It's okay if your legs sink, we all float differently

Move your hands and legs to stay afloat

Remember it. Practise it.
FLOAT TO LIVE

Photo: RNLI

The RNLI is the charity that saves lives at sea

The Royal National Lifeboat Institution, a charity registered in England and Wales (2096603), Scotland (SC037736), the Republic of Ireland (CHI 2678 and 20003326), the Bailiwick of Jersey (14), the Isle of Man (1308 and 0063296), the Bailiwick of Guernsey and Alderney, of West Quay Road, Poole, Dorset, BH15 1HZ

#RESPECTTHEWATER

J251177565

ABERDEEN



14. EMERGENCY PROCEDURES AND COMMUNICATIONS

14.1 Medical Emergencies

Medical provision will always be available during the event, with roaming first aiders, ambulances, and medical treatment centres across the event site. Additionally, overnight provision will be available as required.

If you are unwell, or find someone in need of medical assistance, contact Event Control by calling 01224 469460.

In the event of an emergency, dial 999, and then contact Event Control where possible

Important for Overseas Visitors:

As a visitor to Scotland, you may have to pay for any healthcare you need while you are here. Please refer to the following resource for further information on healthcare costs for overseas visitors:

[Healthcare for Overseas Visitors](#)

ABERDEEN



Appendix 1 – Ship Services Request Form

The Tall Ships Races | Aberdeen |
19-22 July 2025 | Ship Services
Request Form



ABERDEEN



Appendix 2 - Cfine Supplies



Tall Ships Aberdeen 2025

Ordering Process for Fruit & Veg Supplies

A bit of background

CFINE is a charity and social enterprise. It improves health & wellbeing and the environment, tackles poverty and builds resilience through a range of support and services for and with disadvantaged, vulnerable, low-income individuals, families, and communities in North-east Scotland. Through its enterprise trading, we operate a fruit and vegetable business and are one of the key competitors in Aberdeen and we are proud to hold contracts with Serco NorthLink, Tidewater Marine UK Ltd, and Fletcher Shipping.

Why buy from CFINE?

Not only do we offer excellent quality, service, and value for money, all the profits generated from fruit & veg sales are reinvested into CFINE's charitable activities, contributing to the support of 1,000's of people each year. Additionally, due to CFINE being located directly across from the Port of Aberdeen, we are uniquely placed to provide this service, keeping food miles to a minimum.

Ordering Instructions

CFINE is delighted to welcome the Tall Ships to Aberdeen and are pleased to have the opportunity to offer the supply of fresh fruit & vegetables to the vessels during your stay.

Please find the following guidelines to ensure a smooth ordering process during your stay in the Port of Aberdeen.

1. Contact details for sending orders

Orders should be **emailed** to - tallships@cfine.org and alternatively, should you be unable to email, orders can be placed by **phone** to **07862 006107**

Contact names at CFINE for all orders –

- Richie Gavin
- Will Redpath

2. Ordering timescales

Orders should ideally be placed 48 hours prior to delivery. This ensures we can provide all the produce required and will avoid shortages; please see the ordering guidance below for timescales:

Required Delivery Date	Order by latest	Deadline
Friday 18 th July	Wednesday 16 th July	4pm
Saturday 19 th July	Thursday 17 th July	4pm
Sunday 20 th July	Friday 18 th July	2pm
Monday 21 st July	Friday 18 th July	2pm
Tuesday 22 nd July	Sunday 20 th July	2pm

ABERDEEN



3. Last minute orders

We are hugely grateful if orders can be placed as far in advance as possible however, we are aware that last minute orders may sometimes be required, and we will try to accommodate any late orders as far as possible.

4. Details you will need to provide

When placing your order, please ensure you provide the following details:

- Name of Yacht
- Day & Date of Delivery
- Location in Aberdeen Harbour
- Contact Telephone Number
- Contact Name

5. Fruit & Vegetable Selection

Please see **appendix 1** for our full range of fruit & veg. This also includes indicative pricing however some prices in July may differ due to season. All produce is priced per unit or p/kg however we can provide produce in bulk / cases should this be required.

6. How will your orders be packed?

Orders will be packed in cardboard boxes with the least packaging as possible. Your order will have the name of your vessel and the date of delivery on the exterior of the box.

7. Where will your orders be delivered?

Where possible, we will deliver your order direct to your vessel however, due to harbour restrictions this may not always be possible. CFINE will therefore arrange with the Liaison Officer Team to have designated delivery locations allocated at the harbour so you can collect your order. Alternatively, you can collect your order direct from our facilities across from the Port during the following times:

Friday, Monday & Tuesday 9am to 2pm AND Saturday & Sunday 8am – 10am

8. How will you pay for your order?

To ensure we can make this as easy as possible for you, we offer 3 options for payment, as follows:

- Payment by Cash (GBP)
- Payment by credit card or debit card
- Payment by bank transfer to:

Details for Bank Transfer Payments

Community Food Initiatives North East Ltd

Sort Code: **80-22-60**

Account No: **06359168**

IBAN: GB23BOFS80226006359168

BIC: BOFSGS1SDP

Thank you, and please do not hesitate to contact the team at CFINE should you have any questions in advance – we are here to help!

Fiona Rae
Chief Executive



ABERDEEN



Appendix 1



N.B., Indicative Prices

Subject to Change

CFINE

4 Poynerook Road

Aberdeen

AB11 5RW

Tel:



Yacht Name:

Email: tallships@cfine.org

Contact Number:

Delivery Date:

FRUIT				
Product	Unit	Order	unit price	Total
Apples - Braeburn	each		£0.40	£0.00
Apples - Golden Delicious	each		£0.35	£0.00
Apples - Granny Smith	each		£0.50	£0.00
Apples - Pink Lady	each		£0.55	£0.00
Apples - Red Delicious / Mac Red	each		£0.55	£0.00
Apples - Royal Gala	each		£0.35	£0.00
Bananas	each		£0.45	£0.00
Blueberries - punnet	punnet		£2.95	£0.00
Blackberries - punnet	punnet		£3.95	£0.00
Clementines	each		£0.45	£0.00
Grapefruit white	each		£1.00	£0.00
Grapefruit red	each		£1.00	£0.00
Grapes Green	punnet		£3.00	£0.00
Grapes red	punnet		£3.00	£0.00
Kiwi	each		£0.35	£0.00
Lemon	each		£0.45	£0.00
Lime	each		£0.45	£0.00
Mango	each		£1.85	£0.00
Melon Canteloupe	each		£2.80	£0.00
Melon - Honeydew	each		£2.50	£0.00
Melon - Galia	each		£2.50	£0.00
Melon - Water	each		£4.50	£0.00
Nectarines	each		£0.85	£0.00
Orange	each		£0.40	£0.00
Passion fruit	each		£0.95	£0.00
Peaches	each		£0.85	£0.00
Pear	each		£0.45	£0.00
Pineapple	each		£2.00	£0.00
Plum	each		£0.40	£0.00
Raspberries	punnet		£2.95	£0.00
Strawberries	punnet		£2.95	£0.00
Total Cost of Fruit				£0.00

ABERDEEN



Appendix 3 - Declaration of Health Form



ABERDEEN PORT HEALTH AUTHORITY

MARITIME DECLARATION OF HEALTH – TALL SHIPS EVENT

Public Health (Ships) Scotland Regulations 1971 as amended

To be completed and submitted to the Port of Aberdeen by the masters of ships arriving from foreign ports for the Tall Ships event.

Submitted at the port of:		Date:	
Name of Ship:		Registration/IMO No:	
Arriving from:		Sailing to:	
Nationality (Flag):		Master's name:	
Gross tonnage:		Net tonnage:	
Valid Sanitation Control Exemption/Control Certificate carried on board?			YES/NO
Date:			
Issued at:			
Has ship/vessel visited an affected or high-risk area identified by the World Health organisation?			YES/NO
Number of crew members on board:		Number of passengers on board:	

List ports of call from commencement of voyage with dates of departure, or within past thirty days, whichever is shorter:

PORT	DATE OF DEPARTURE

Crew List - Please append to this Tall Ships Maritime Declaration of Health document a full list of crew members, passengers or other persons who have joined ship/vessel since international voyage began or within past thirty days, whichever is shorter, including all ports/countered visited in this period

Health Questions

1	Has any person died on board during the voyage otherwise than as a result of accident? If yes, state particulars in attached schedule. Total number of deaths:	YES/NO
2	Is there on board or has there been during the international voyage any case of disease which you suspect to be of an infectious nature? If yes, state particulars in attached schedule.	YES/NO
3	Has the total number of ill passengers during the voyage been greater than normal/expected? How many ill persons?	YES/NO
4	Is there any ill person on board now? If yes, state particulars in attached schedule.	YES/NO
5	Was a medical practitioner consulted? If yes, state particulars in attached schedule.	YES/NO

ABERDEEN



6	Are you aware of any condition on board which may lead to infection or spread of disease? If yes, state particulars in attached schedule.	YES/NO
7	Has any sanitary measure (e.g. quarantine, isolation, disinfection or decontamination) been applied on board? If yes, specify type, place and date.	YES/NO
8	Have any stowaways been found on board? If yes, where did they join the ship (if known)?	YES/NO
9	Is there a sick animal or pet on board?	YES/NO

Note: In the absence of a surgeon, the master should regard the following symptoms as ground for suspecting the existence of a disease of an infectious nature:

a) fever, persisting for several days or accompanied by:

- prostration;
- decreased consciousness;
- glandular swelling;
- jaundice;
- cough or shortness of breath; • unusual bleeding;
- paralysis.

b) with or without fever:

- any acute skin rash or eruption;
- severe vomiting (other than sea sickness);
- severe diarrhoea; or
- recurrent convulsions

I hereby declare that the particulars and answers to the questions given in the Declaration of Health (including the schedule) are true and correct to the best of my knowledge and belief.

Signed:	Date:
MASTER	Countersigned:
	Ship's surgeon (if carried)

Please email the completed Maritime Declaration of Health document (with appended Crew list) to the following emails at the Port of Aberdeen and Aberdeen city Council:

vts@portofaberdeen.co.uk
n-shaw@portofaberdeen.co.uk
harbourmasters@portofaberdeen.co.uk
porthealthaberdeen@aberdeencity.gov.uk

ABERDEEN



Appendix 4 - Berthing Plan and an Overview of the Port



Appendix 5 – Tall Ships 2025 Aberdeen – Event Map



ABERDEEN