

TALL SHIPS RACES 2025

Captains' Briefing – LE HAVRE



Sail Training International

CAPTAINS' BRIEFING

- Welcome and Roll Call
- Meet the Team
- Undocking and Parade of Sail
- Arrival Information – DUNKIRK
- Race Start and Course
- Race Communications
- Weather Forecast
- Other Business



Sail Training International

CAPTAINS' BRIEFING



STI & RaceMgt News Channel

WhatsApp group



Captain's Social Club

WhatsApp group



Sail Training International

ROLL CALL



Sail Training International

MEET THE TEAM



Sail Training International

STI RACE TEAM LE HAVRE



Magda Makowska
Race Director



Alan James
CEO



Harry Allaway
Assistant Race Director



Ian Lerner
Assistant Race Director



Sam Leonard
Media Manager



Karen James
Race Office Assistant



Helene Lerner
Vessel Inspector/Comms Officer



Laura Blyth-Brown
Race Administrator



Vanessa Mori
Commercial Director



Penny Tranter
Chartered Meteorologist



George Mills
Chief Vessel Inspector



Mal Riley
Vessel Inspector/Comms Officer



Abbey Stroud
Youth Council Rep



Jan Stalmans
Vessel Inspector



Becky Nelson
Commercial Assistant



Abi Haywood
Media Assistant



Dean Mills
Driver/Logistics Support



Max Mudie
Official Videographer



Krzysztof Romanski
Official Photographer



Sail Training International

CVI AWARD



Sail Training International

LE FRANCAIS



Sail Training International

UNDocking & PARADE OF SAIL



Sail Training International

**LES
GRANDES
VOILES
DU HAVRE
2025**

CAPTAIN'S BRIEFING

SUNDAY 6 JULY 2025 - LE HAVRE

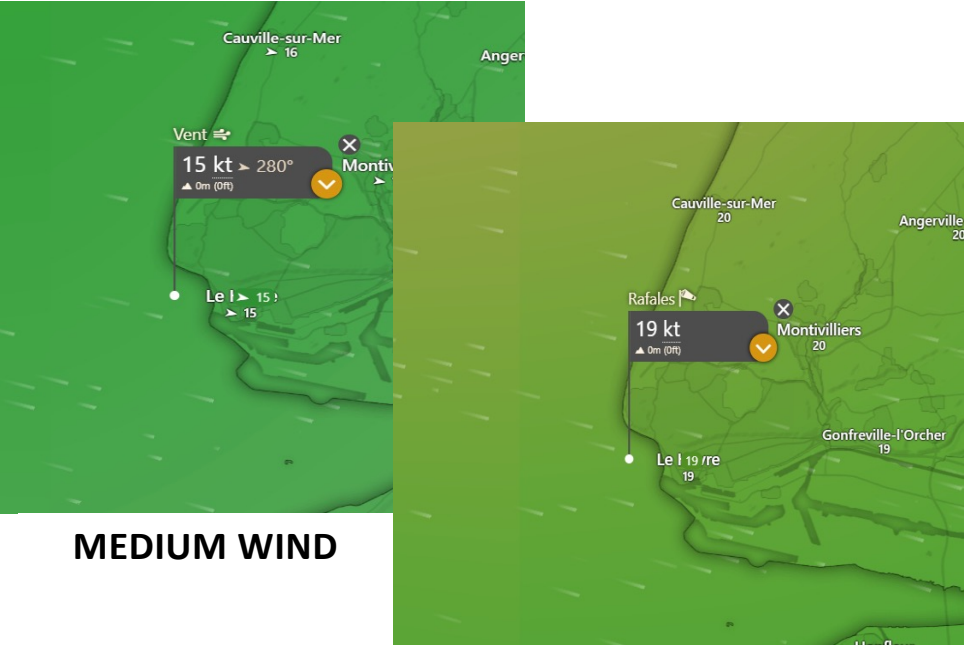


WEATHER FORECASTS / TIDES

LES
GRANDES
VOILES
DU HAVRE
2025



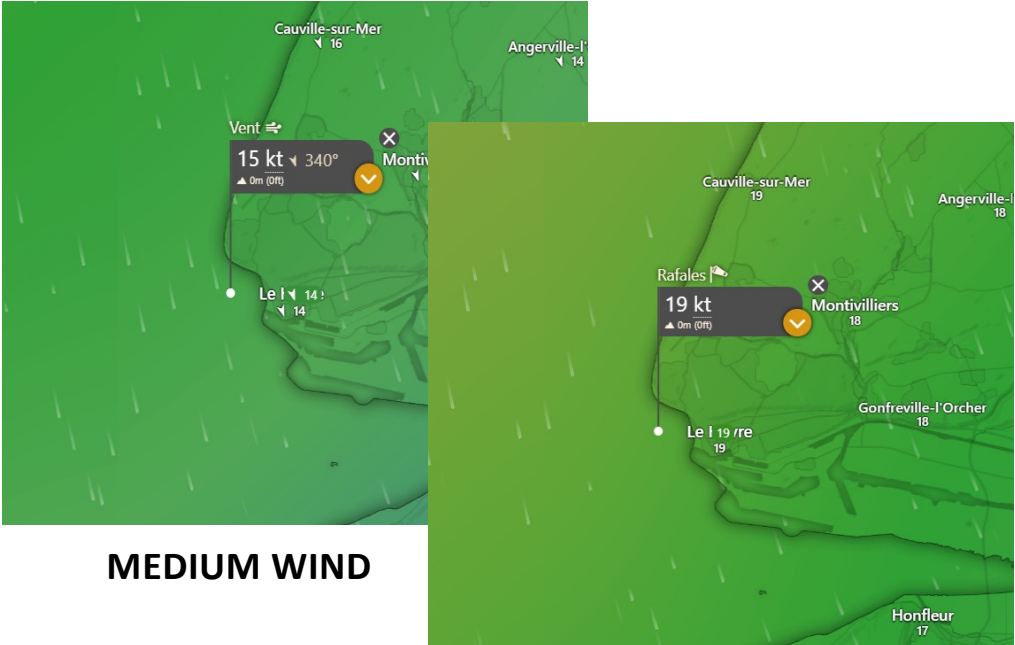
SUNDAY 6 JULY / 07:00 PM LT



MEDIUM WIND

GUSTS

MONDAY 7 JULY / 08:00 AM LT



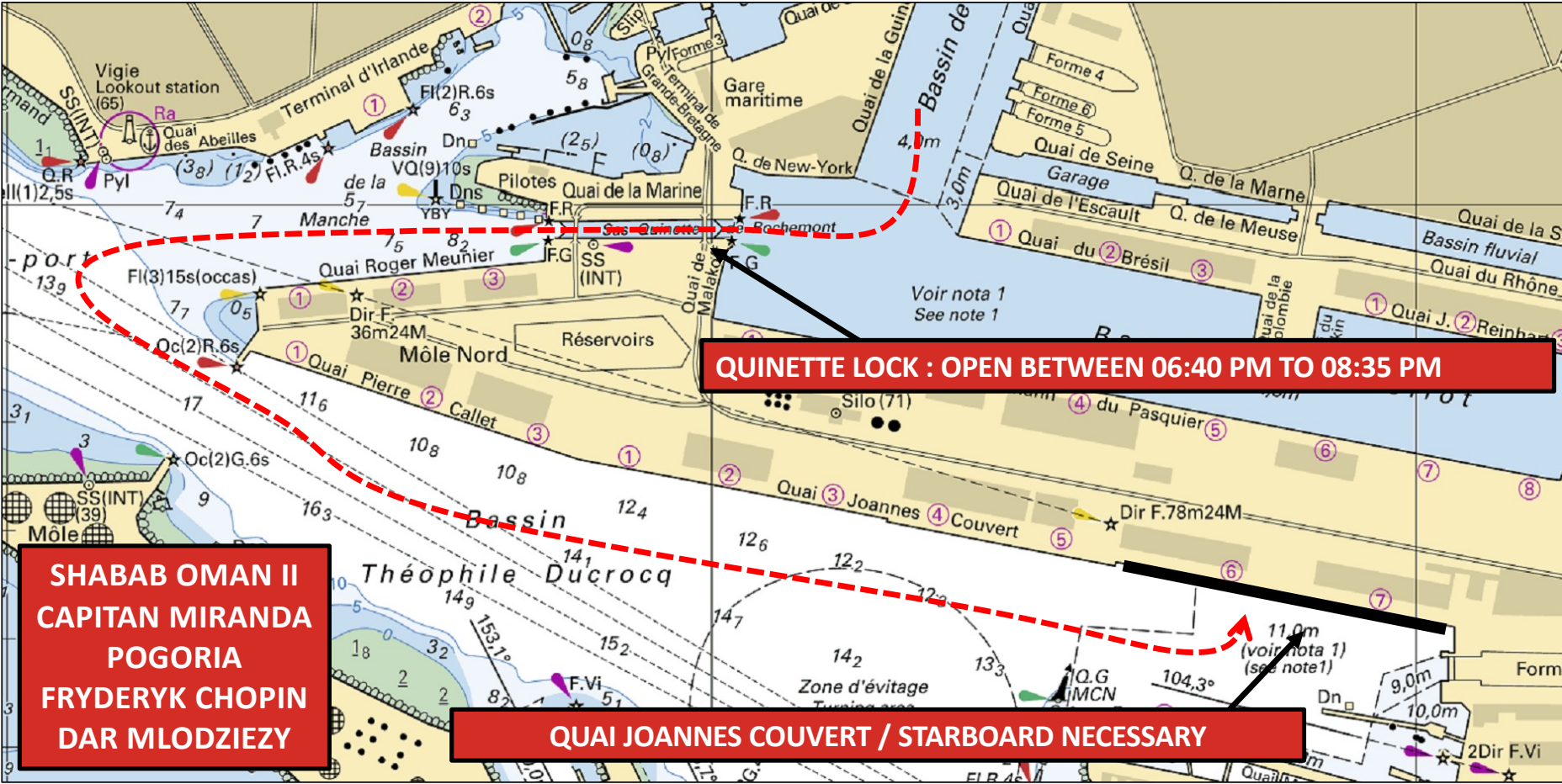
MEDIUM WIND

GUSTS

MONDAY 7 JULY : HIGH TIDE : 09:07 AM (+6.47M) | LOW TIDE : 03:56 PM (+3,01M)

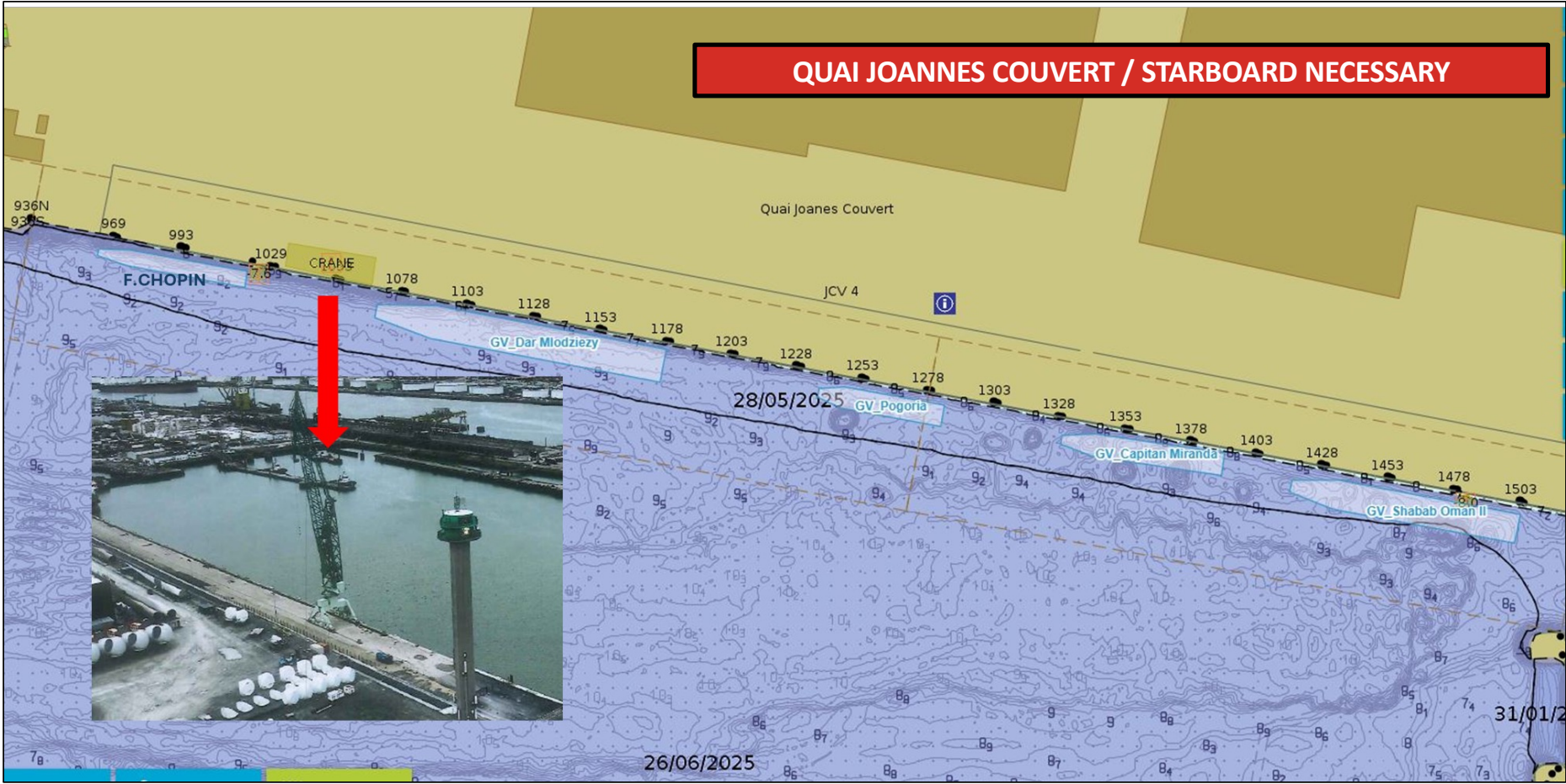
SUNDAY 6 : DOCK OUT FOR 5 SHIPS

LES
GRANDES
VOILES
DU HAVRE
2025



SUNDAY 6 : DOCK OUT FOR 5 SHIPS

LES
GRANDES
VOILES
DU HAVRE
2025



MONDAY 7 : UNBERTHING VESSELS

LES
GRANDES
VOILES
DU HAVRE
2025



Ship	1	A	SARABE ORMAN I	OMAN	Military	45.80	46.92	5.40	17.40	1.00	00.00	00.00
Ship	2	A	CAPTAIN MARINELA	URUGUAY	Military	46.45	46.90	5.00	16.20	0.00	00.00	00.00
Ship	3	A	POUGARA	POLAND	Not military	47.00	46.20	2.00	16.30	0.00	00.00	00.00
Ship	4	A	DAM MUCIOWSKI	POLAND	Not military	100.00	95.00	6.00	16.30	0.00	00.00	00.00
Ship	5	A	METISSEYER LACON	POLAND	Not military	76.00	46.00	6.00	16.30	0.00	00.00	00.00

Vessel	6	C	PROFIC	UK	Not military	41.00	35.00	4.00	16.30	0.00	00.00	00.00
Vessel	7	C	OCEAN SPIRIT OF MORGAY	UK	Not military	24.00	24.00	2.00	16.30	0.00	00.00	00.00
Vessel	8	C	JOUR DE L'AMER	SPAIN	Not military	18.25	18.25	2.00	16.30	0.00	00.00	00.00
Vessel	9	C	BEUR	POLAND	Not military	12.00	12.00	2.00	16.30	0.00	00.00	00.00
Vessel	10	C	YOGHANA	FRANCE	Not military	14.40	14.40	2.00	16.30	0.00	00.00	00.00
Vessel	11	C	OTIC	UK	Not military	13.00	13.00	2.00	16.30	0.00	00.00	00.00
Vessel	12	C	OCEAN SCOUT	UK	Not military	14.94	14.94	1.50	17.30	0.00	00.00	00.00
Vessel	13	D	DAM MUCIOWSKI	POLAND	Not military	18.00	18.00	1.70	16.30	0.00	00.00	00.00
Vessel	14	C	ROULE	UK	Not military	20.00	20.00	2.00	16.30	0.00	00.00	00.00
Vessel	15	D	TALA	DOMINIQUE	Not military	18.00	18.00	1.00	16.30	0.00	00.00	00.00

Vessel	16	B	MARIE FERNAND	FRANCE	Not military	24.00	15.40	3.00	16.30	0.00	07.00	07.00
Vessel	17	B	JULIE BERGE	UK	Not military	22.00	17.00	4.00	16.30	0.00	07.00	07.00
Vessel	18	B	VIRIA GUE	PORTUGAL	Not military	26.00	26.00	0.00	16.30	0.00	07.00	07.00
Vessel	19	A	LE FRANCAIS	FRANCE	Not military	46.70	36.00	5.00	16.30	0.00	07.00	07.00
Vessel	20	A	WILHELMINA	NETHERLANDS	Not military	42.00	42.70	5.00	16.30	0.00	07.00	07.00
Vessel	21	A	TRAGATA	NETHERLANDS	Not military	47.00	36.00	2.00	16.30	0.00	07.00	07.00
Vessel	22	B	PASCAL RICHES	SPAIN	Not military	43.00	36.00	4.00	16.30	0.00	07.00	07.00
Vessel	23	D	CONDOR II	UK	Military	22.00	22.00	0.00	17.00	0.00	07.00	07.00
Vessel	24	A	SCHLACHT	NORWAY	Military	44.25	36.00	4.00	16.30	0.00	07.00	07.00
Vessel	25	A	PROFIC	FRANCE	Not military	44.00	36.00	0.00	16.30	0.00	07.00	07.00
Vessel	26	A	CHRISTIAN SANDVIK	NORWAY	Not military	71.00	42.00	4.00	16.30	0.00	07.00	07.00
Vessel	27	A	KORTJAN GILMANS	POLAND	Not military	46.00	24.00	4.00	16.30	0.00	07.00	07.00
Vessel	28	A	GILLESBURGH	NETHERLANDS	Not military	46.00	32.00	4.00	16.30	0.00	07.00	07.00
Vessel	29	A	STERNACHT	NETHERLANDS	Not military	50.00	36.00	5.00	16.30	0.00	07.00	07.00
Vessel	30	A	MORNINGSTAR	NETHERLANDS	Not military	48.00	36.00	2.00	16.30	0.00	07.00	07.00
Vessel	31	A	BEUR	FRANCE	Not military	18.00	18.00	2.00	16.30	0.00	07.00	07.00
Vessel	32	B	EXCELSIOR	UK	Not military	40.00	22.00	2.00	16.30	0.00	07.00	07.00
Vessel	33	B	MICHAEL	FRANCE	Not military	24.00	16.00	2.00	16.30	0.00	07.00	07.00
Vessel	34	A	ROYALTY	UK	Not military	44.00	40.00	2.00	16.30	0.00	07.00	07.00
Vessel	35	B	REPL	BELGIUM	Not military	22.00	17.00	2.00	16.30	0.00	07.00	07.00

Vessel	36	B	METISSEYER	FRANCE	Not military	42.00	36.00	0.00	17.00	0.00	07.00	07.00
Vessel	37	B	BOIS	FRANCE	Not military	42.00	36.00	0.00	17.00	0.00	07.00	07.00
Vessel	38	B	MUTIN	Military	Not military	20.00	36.00	0.00	17.00	0.00	07.00	07.00
Vessel	39	D	LEON	NETHERLANDS	Military	27.00	24.00	1.70	16.30	0.00	07.00	07.00

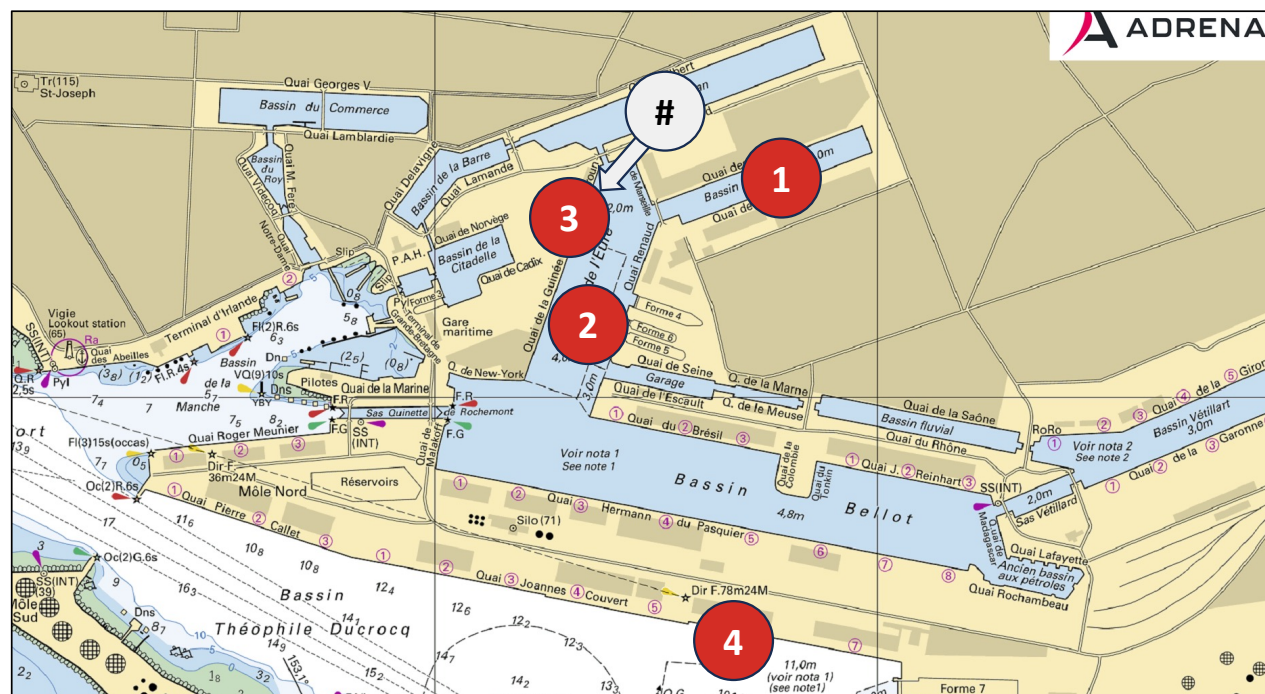
Vessel	40	C	ROULE	UK	Not military	20.00	20.00	2.00	16.30	0.00	07.00	07.00
Vessel	41	C	PROFIC	UK	Not military	41.00	35.00	4.00	16.30	0.00	07.00	07.00
Vessel	42	C	OCEAN SPIRIT OF MORGAY	UK	Not military	24.00	24.00	2.00	16.30	0.00	07.00	07.00
Vessel	43	C	OCEAN SCOUT	UK	Not military	14.94	14.94	1.50	17.30	0.00	07.00	07.00
Vessel	44	C	JOUR DE L'AMER	SPAIN	Not military	18.25	18.25	2.00	16.30	0.00	07.00	07.00
Vessel	45	C	BEUR	POLAND	Not military	12.00	12.00	2.00	16.30	0.00	07.00	07.00
Vessel	46	C	YOGHANA	FRANCE	Not military	14.40	14.40	2.00	16.30	0.00	07.00	07.00
Vessel	47	C	OTIC	UK	Not military	13.00	13.00	2.00	16.30	0.00	07.00	07.00
Vessel	48	D	DAM MUCIOWSKI	POLAND	Not military	18.00	18.00	1.70	16.30	0.00	07.00	07.00
Vessel	49	D	TALA	DOMINIQUE	Not military	18.00	18.00	1.00	16.30	0.00	07.00	07.00

Vessel	50	A	DAM MUCIOWSKI	POLAND	Not military	100.00	95.00	6.00	16.30	0.00	00.00	00.00
Vessel	51	A	METISSEYER LACON	POLAND	Not military	76.00	46.00	6.00	16.30	0.00	00.00	00.00
Vessel	52	A	POUGARA	POLAND	Not military	47.00	46.20	5.00	16.30	0.00	00.00	00.00
Vessel	53	A	CAPTAIN MARINELA	URUGUAY	Military	46.45	46.90	5.00	16.30	0.00	00.00	00.00
Vessel	54	A	SARABE ORMAN I	OMAN	Military	45.80	46.92	5.40	17.40	1.00	00.00	00.00



RESPECT YOUR TIME OF DEPARTURE AND PASSAGE
TO THE LOCK INDICATED IN THE DOCUMENT

ALL TIME ARE IN LOCAL TIME (TU + 2)
TIME OF DEPARTURE = BE READY A FEW MINUTES BEFORE



VESSELS UNBERTHING

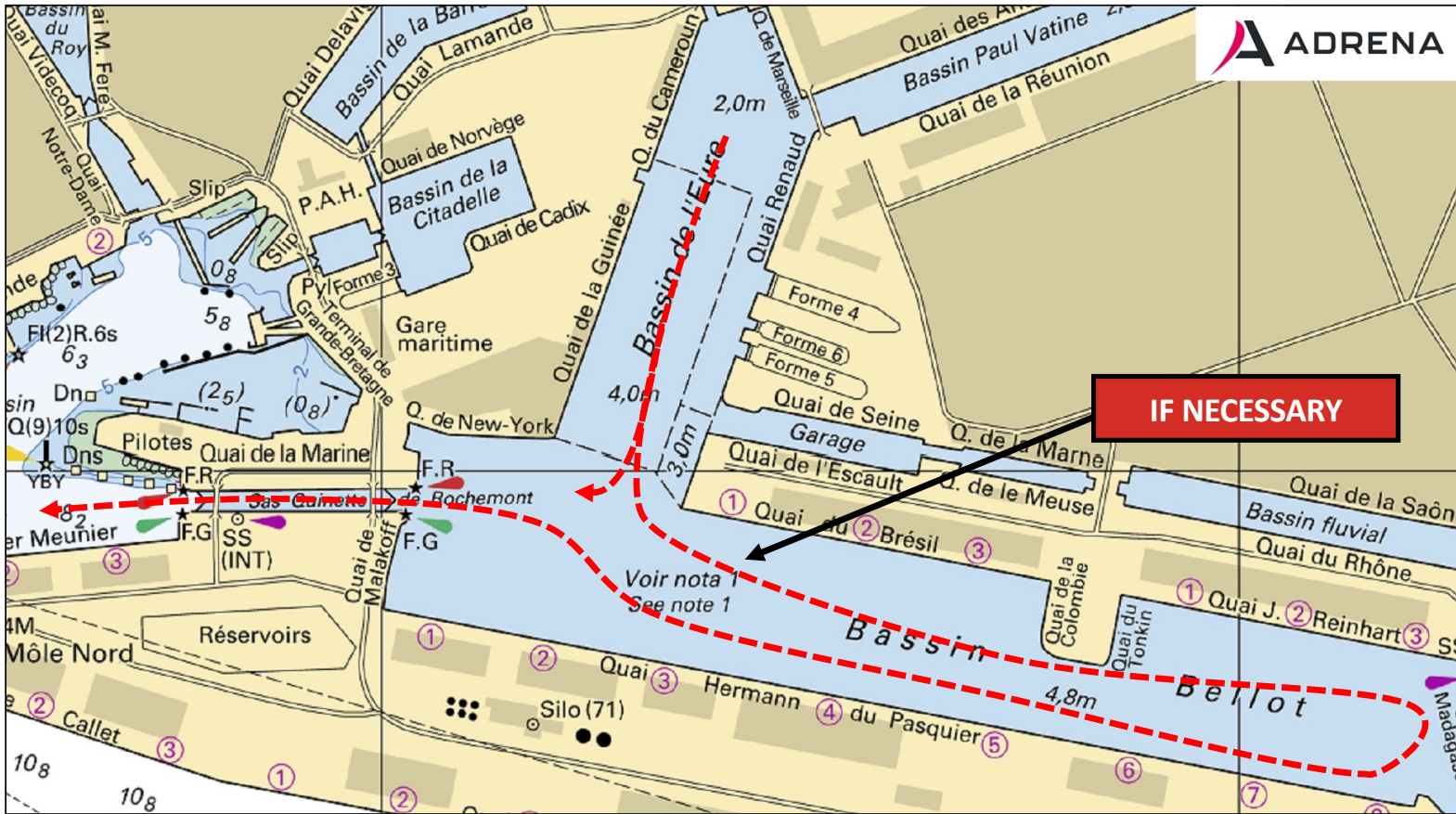
LES GRANDES VOILES DU HAVRE 2025



THE TALL SHIPS RACES

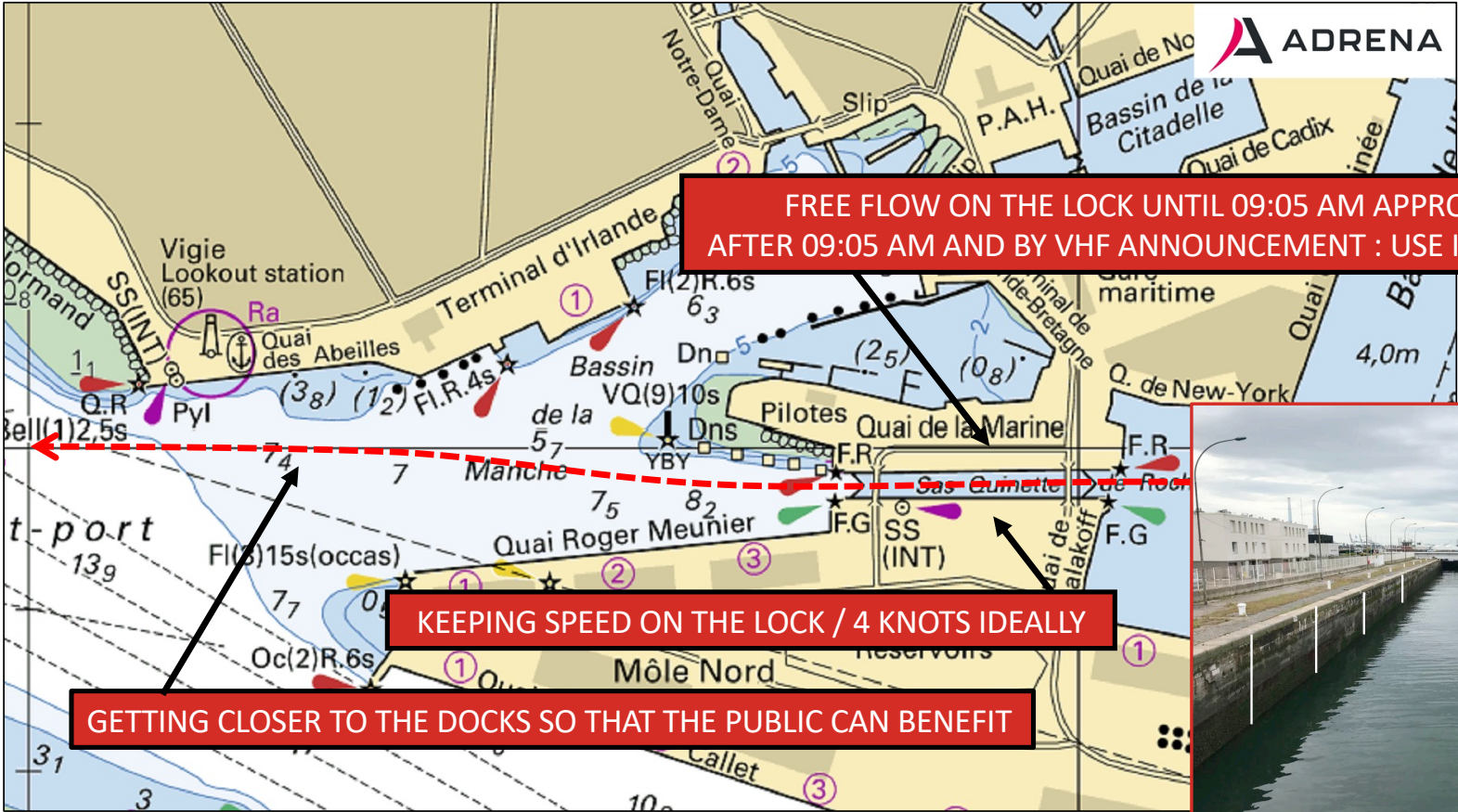
Le Havre 2025

organised by Sail Training International



QUINETTE LOCK

LES
GRANDES
VOILES
DU HAVRE
2025



FREE FLOW ON THE LOCK UNTIL 09:05 AM APPROX
AFTER 09:05 AM AND BY VHF ANNOUNCEMENT : USE IN LOCK

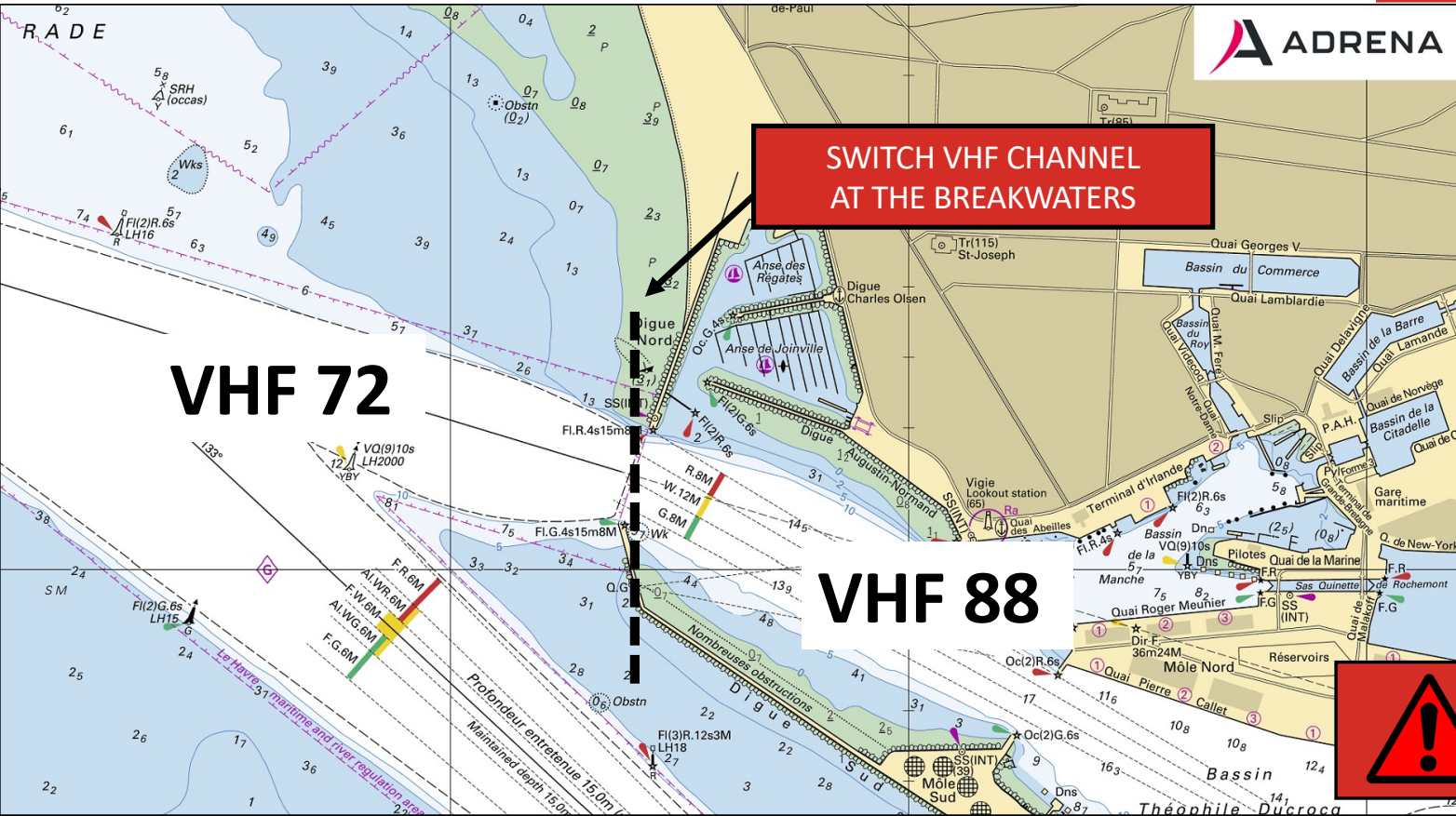
KEEPING SPEED ON THE LOCK / 4 KNOTS IDEALLY

GETTING CLOSER TO THE DOCKS SO THAT THE PUBLIC CAN BENEFIT



VHF CHANNELS

LES
GRANDES
VOILES
DU HAVRE
2025

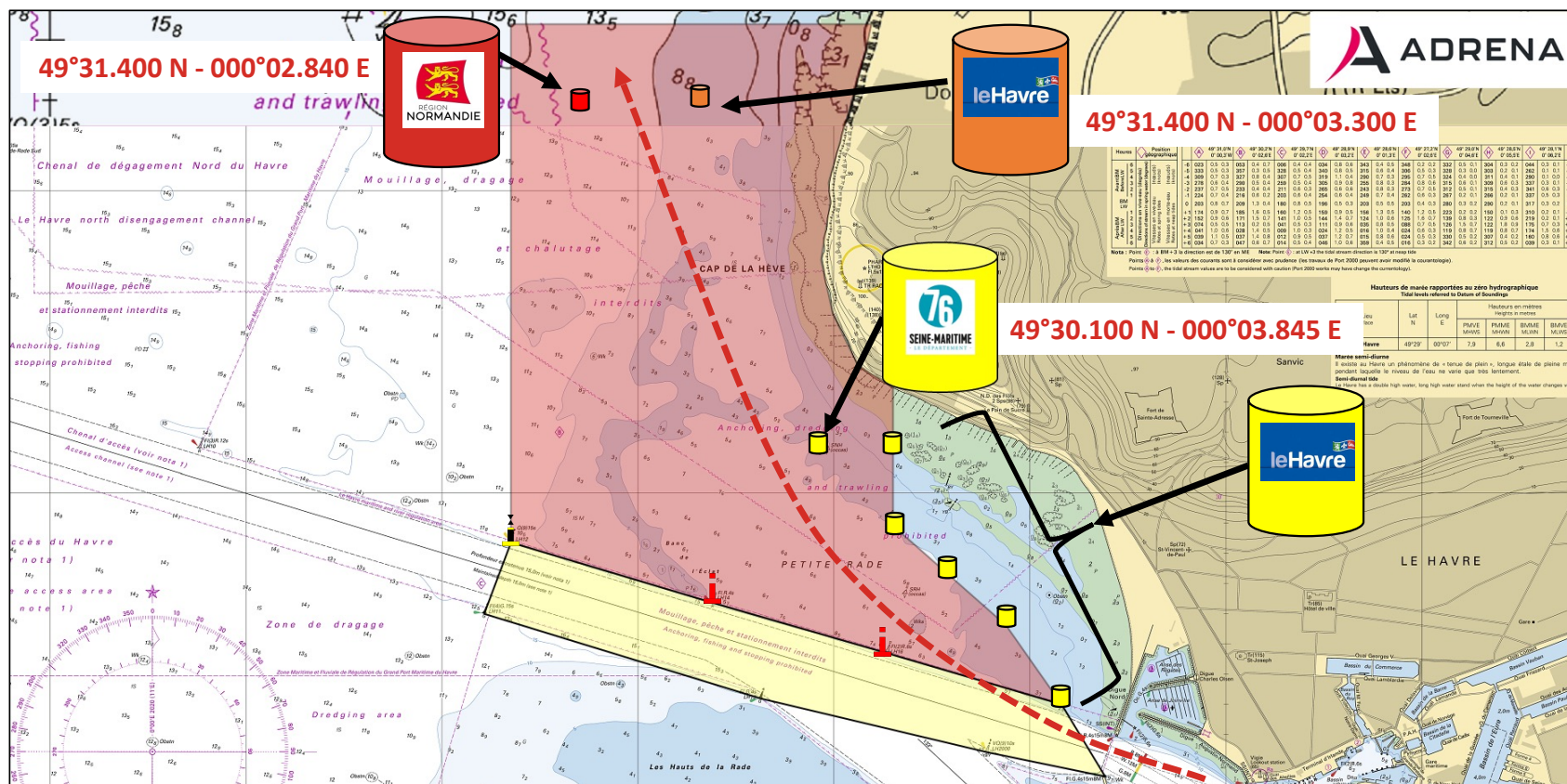


PARADE ROUTE

**LES
GRANDES
VOILES
DU HAVRE
2025**



THE TALL SHIPS RACES
Le Havre 2025
organised by Sail Training International



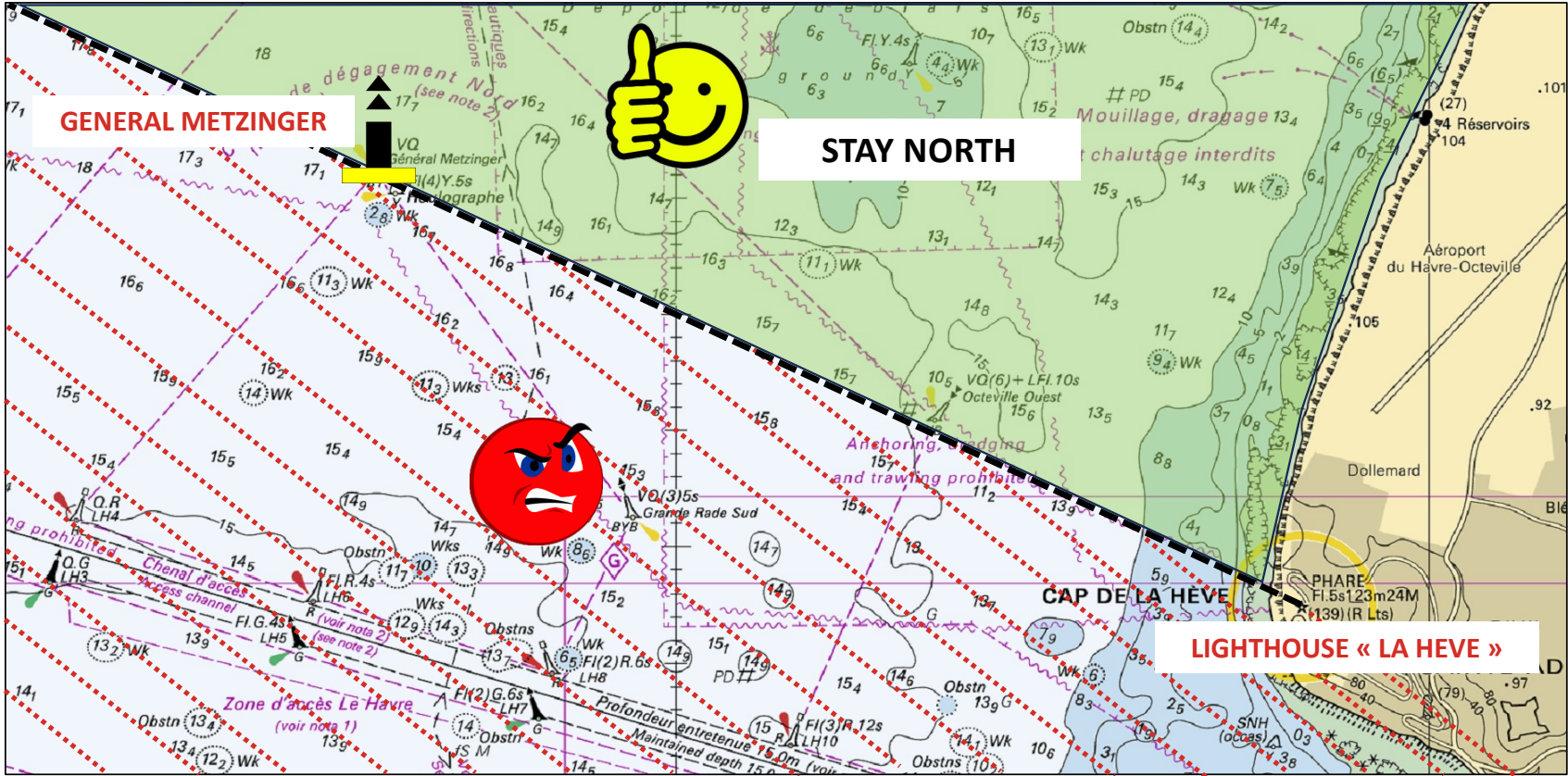
PARADE INSTRUCTIONS



DON'T TAKE ANY RISKS
KEEP YOUR DISTANCE FROM THE VESSEL IN FRONT OF YOU
SAILING AT AROUND 4 KNOTS
KEEP A VHF WATCH : VHF 16 / 88 (BASSINS) OR 72 (FOR THE PARADE)
IF NECESSARY, A HARBOUR TUG IS ON SITE

AFTER THE PARADE / BEFORE THE START

LES
GRANDES
VOILES
DU HAVRE
2025



ARRIVAL TO DUNKIRK



Sail Training International



Tall ships races

Briefing Arrival Dunkirk

VOILES
LEGENDE
Dunkerque 2025


THE TALL SHIPS RACES
Dunkerque 2025
organised by Sail Training International

till 13
July 2025



Some Waypoint's for 2025

650

volunteers and 40 LO

2 000

équipage

600 000

number of visitors

+46

200
Trainees from Dunkirk

4

Days festival



Niet te vergeten...



Verschillende groene
transportmogelijkheden



Thematische dorpen
en animatie

VOILES
et LÉGENDE
Dunkerque 2025

THE TALL SHIPS RACES
Dunkerque 2025
organised by Sail Training International

Arrival procedure

Arrival
At Cap
Griz-Nez

Take
Contact
Cross
Griz-Nez

VHF 16



Niet te vergeten...



Verschillende groene
transportmogelijkheden

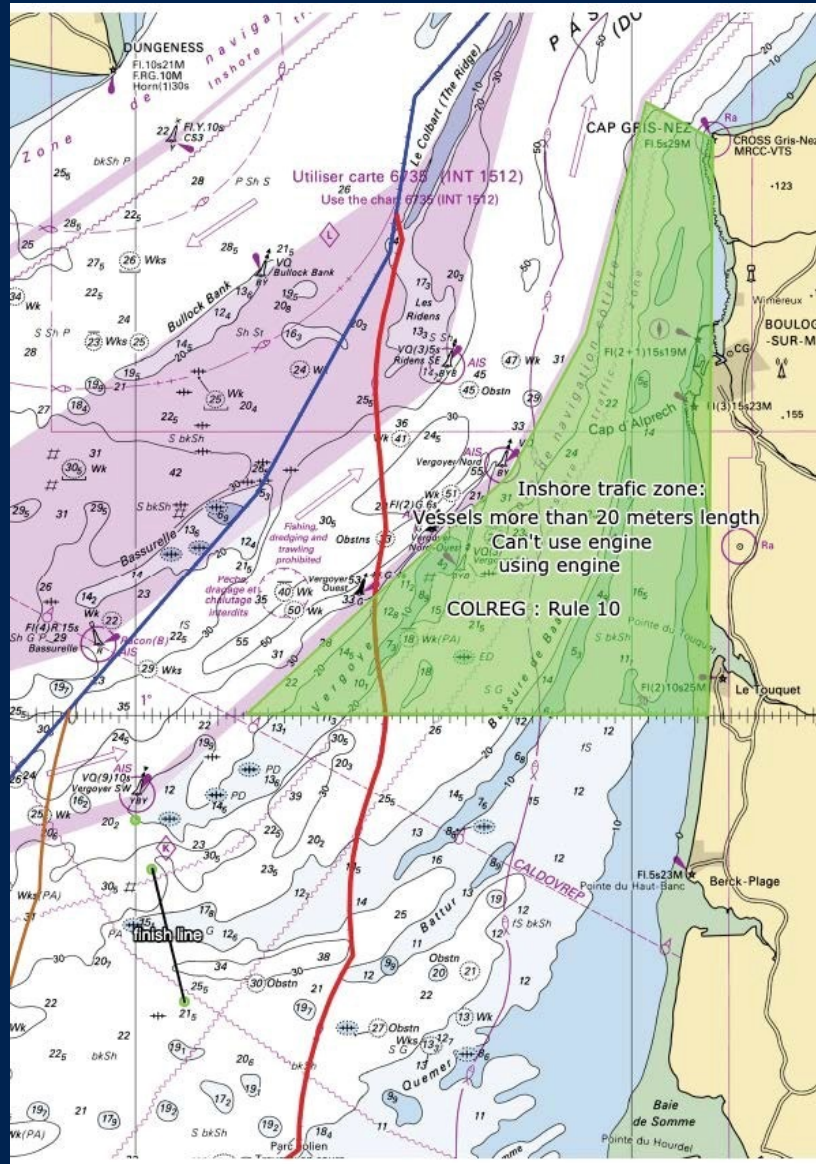


Thematische dorpen
en animatie

VOILES
et LÉGENDE
Dunkerque 2025


THE TALL SHIPS RACES
Dunkerque 2025
organised by Sail Training International

Arrival zone



Green zone

1. Inshore traffic zone
2. More than 20 m no engine
3. Watch out for illegal boats
4. Don't take migrants on board

Arrival ships waiting pilot

2 hr before
Dunkirk
VTS 73

Maintain
watch
VHF 73



Niet te vergeten...



Verschillende groene
transportmogelijkheden



Thematische dorpen
en animatie

VOILES
LEGENDE
Dunkerque 2025

THE TALL SHIPS RACES
Dunkerque 2025
organised by Sail Training International

Arrival ships without pilot

2 hr before
Dunkirk take contact
VTS

Maintain
watch
VHF 73



Niet te vergeten...



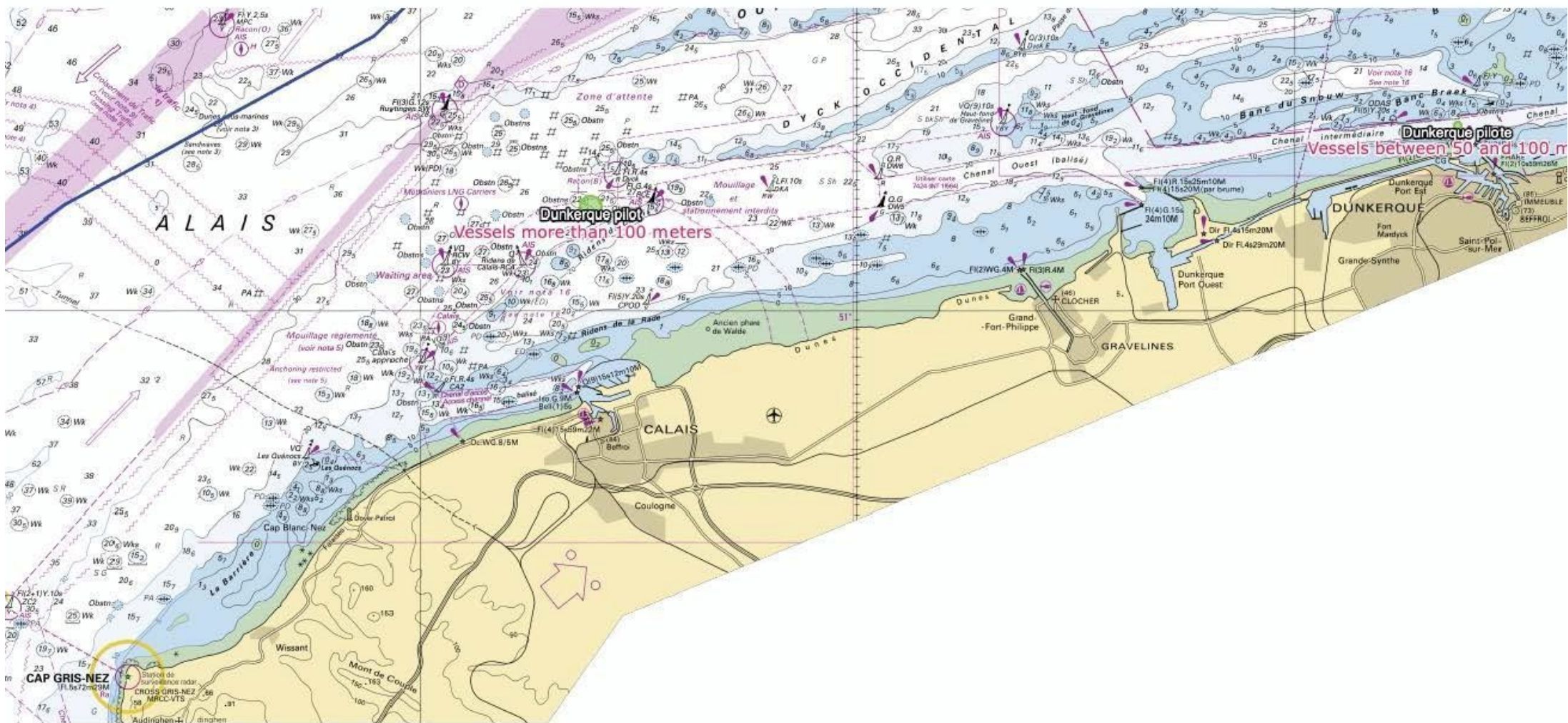
Verschillende groene
transportmogelijkheden



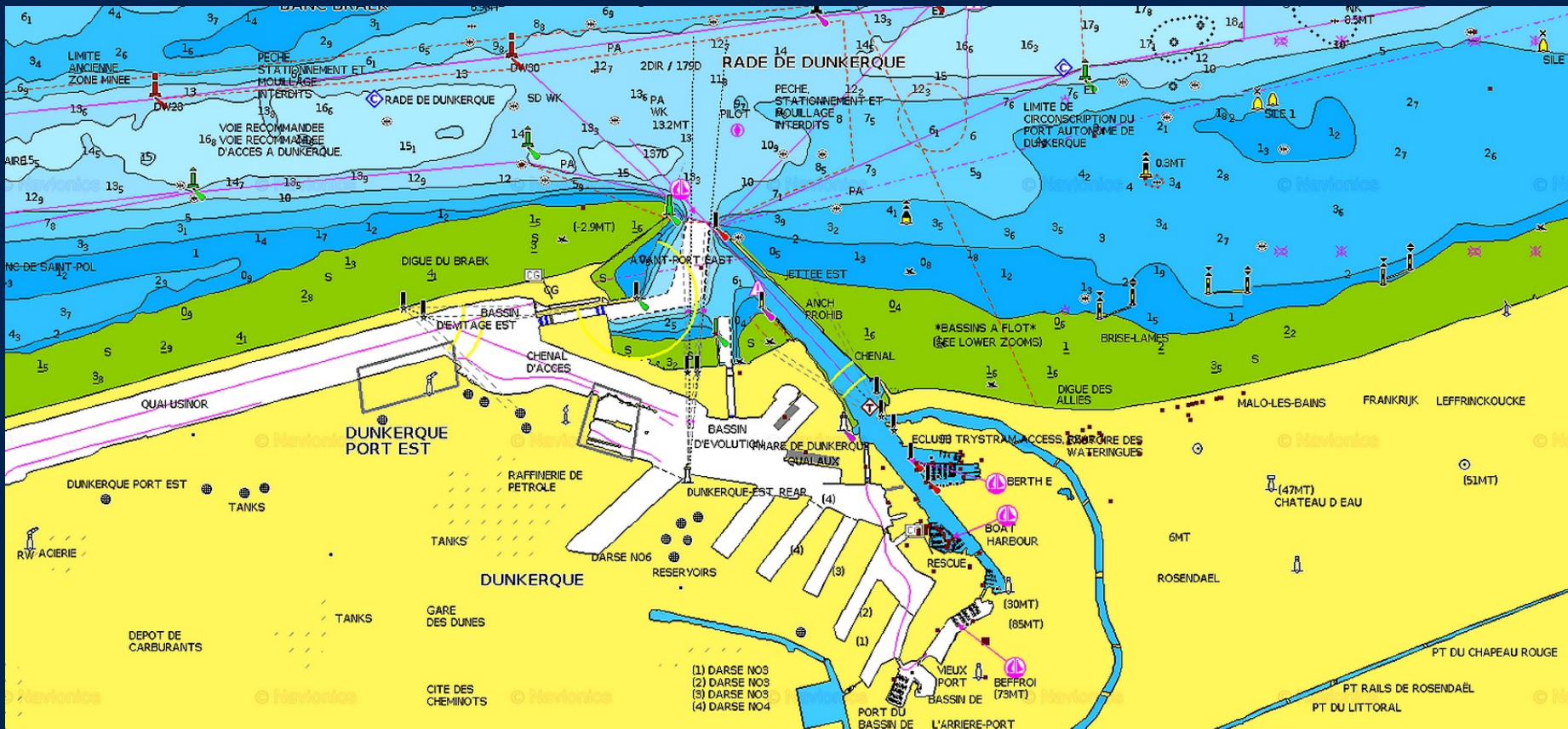
Thematische dorpen
en animatie

VOILES
et LÉGENDE
Dunkerque 2025

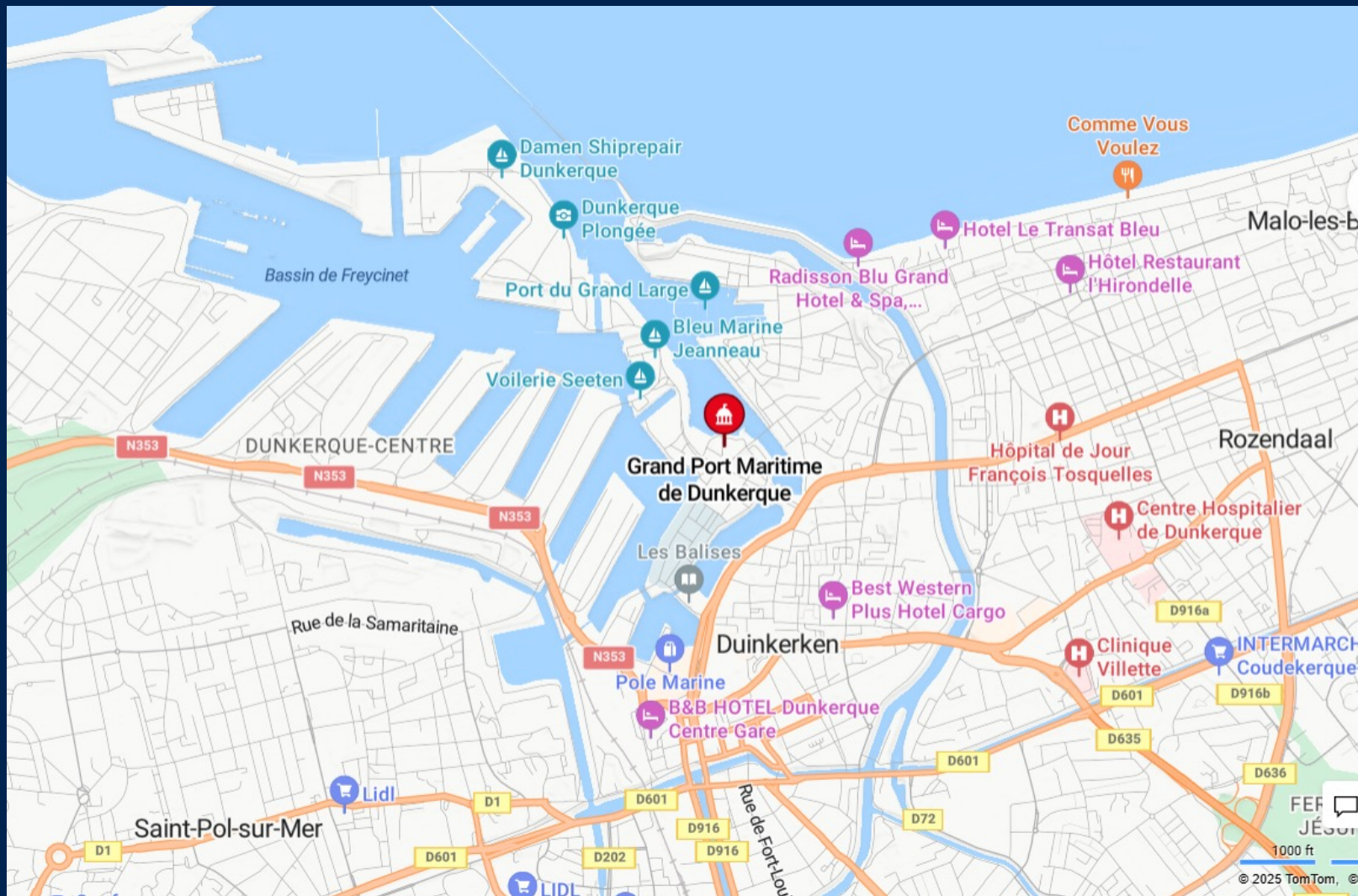
THE TALL SHIPS RACES
Dunkerque 2025
organised by Sail Training International



Entrance port lock's Trystram B-D / Wattiez A



Entrance port lock's Trystram B-D / Wattiez A



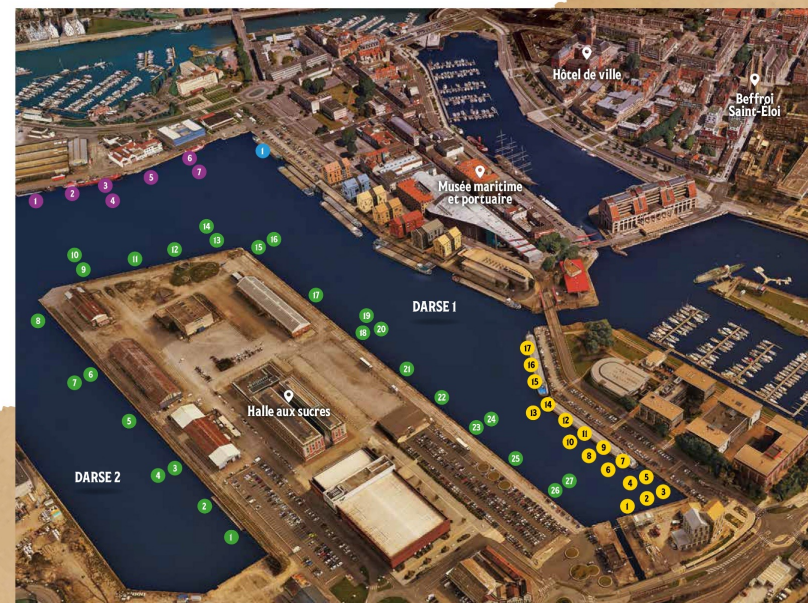
Entrance port lock's Trystram B-D / Wattiez A



Mooring zone A – B – C and D ships at Freycinet 1-4

Implantation des voiliers et navires*

Dunkerque
Grand Littoral
COMMUNAUTE URBAINE



* Sous réserves de modifications. ** Bateaux médias.

BATEAUX AMARRÉS:

MÔLE 1

- 1 Fryderyck Chopin
- 2 Capitain Miranda
- 3 Morgenster
- 4 Skonnerten Jylland
- 5 Eendracht
- 6 Wylde Swan
- 7 Pogoria
- 8 Christian Radich
- 9 Thalassa
- 10 Prolific
- 11 Vera Cruz
- 12 Phœnix
- 13 La Nébuleuse
- 14 HNLM Urania

- 15 Pascal Flores
- 16 Valborg
- 17 Gulden Leeuw
- 18 Le Français
- 19 Hosanna
- 20 Levitha
- 21 Sorlandet
- 22 Shabab Oman II
- 23 Royalist
- 24 Kapitän Glowacki
- 25 Belem
- 26 Le Biche
- 27 Milpat

FREYCINET 2

- 1 Nele**
- 2 Esprit
- 3 Corsaro II
- 4 Juan de Langara
- 5 Rona II
- 6 Williwaw
- 7 Tara
- 8 Ocean Scout
- 9 Cykas
- 10 Ortac
- 11 Dar Szczecina
- 12 Beller
- 13 Betty
- 14 Rupel
- 15 Licorne
- 16 Petit Jean**
- 17 Téthys**

QUAI DE DÉPART/GUILLAIN

- 1 BSAM Garonne
- 2 Mutin
- 3 Excelsior
- 4 Jolie Brise
- 5 Nordet DF37
- 6 Ocean Spirit
- 7 Swan

FREYCINET 1

- 1 Dar Młodzieży

VOILES
LEGENDE
Dunkerque 2025

Perimeter of the event and Security barrier's and villages

ENTRÉES ET SORTIES DU SITE :

- | | | | |
|---|-----------------------|---|---------------------|
| A | Route écluse Trystram | D | Florence Arthaud |
| B | Minck | E | Chaussée des darses |
| C | Quai de l'Estacade | | |

- | | |
|-----|-----------------|
| NOM | Villages |
| | Périmètre |
| | Bateaux amarrés |



Please confirm your ETA to Didier
didier.payen197@orange.fr

Questions

RACING RULES



Sail Training International

RACING RULES UPDATES

FUNDAMENTAL RULE VII. Environmental Responsibility

Tall Ships Races International Limited strongly encourages all activities which minimise any negative impact and do not significantly harm the environment during their events.

17.2 **Gates** between two positions may be used as marks of the course. A vessel must cross the Gate Line from the direction of the last mark and must record the time when any part of her hull or equipment crosses this line.
Note The Gate Line may be used as the Finish Line (see Rule 19) if the course needs to be shortened.

17.3 **Exclusion Zones** such as Traffic Separation Schemes and other restricted areas may be published as marks of the course. These areas should not be entered unless there are safety concerns, which should be recorded on the Race Declaration (Rule 3.3)



Sail Training International

RACING RULES UPDATES

RACE DECLARATIONS:

3.3 Declarations

3.3.1 A completed Race Declaration shall be completed on the Gateway as soon as the vessel berths at the Finish Port. Failure to do so will result in the vessel receiving a Standard Time Penalty (see Rule 15.2) or being treated as having failed to complete the course.

3.3.2 Any contravention, however trivial, of any of these Racing Rules, the Sailing and Communication Instructions or any contravention of the COLREGS must be recorded on the Race Declaration.



Sail Training International

RACE START



Sail Training International

RACE START

START LINE - NOTE: THE START IS ON MONDAY 7 JULY

There will be a virtual Start Gate (please see Rule 8 Note):

Starboard end	49° 41.0' N	000° 03.5' W
Port end	49° 39.0' N	000° 03.5' W

Vessels to go through the Start Gate at any time between 1200 UTC and 1400 UTC.

COMMUNICATION AT THE START

There will be no Start Line vessels. No sound signals will be made. Race Control will be on standby on VHF Channel 77.

STARTING SIGNALS & TIMES – 7 JULY

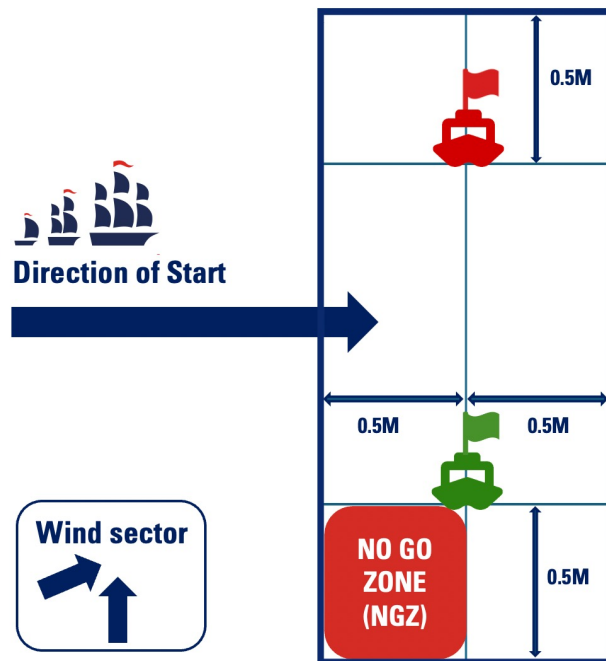
Vessels to go through the Start Gate at any time **between 1200 UTC and 1400 UTC** and record their start time to the nearest second. Captains must report their start time ASAP after crossing the line to Race Control.



Sail Training International

RACE START

Start Line configuration - STARBOARD tack



NO ENTRY
into **START BOX**
until 20 minutes

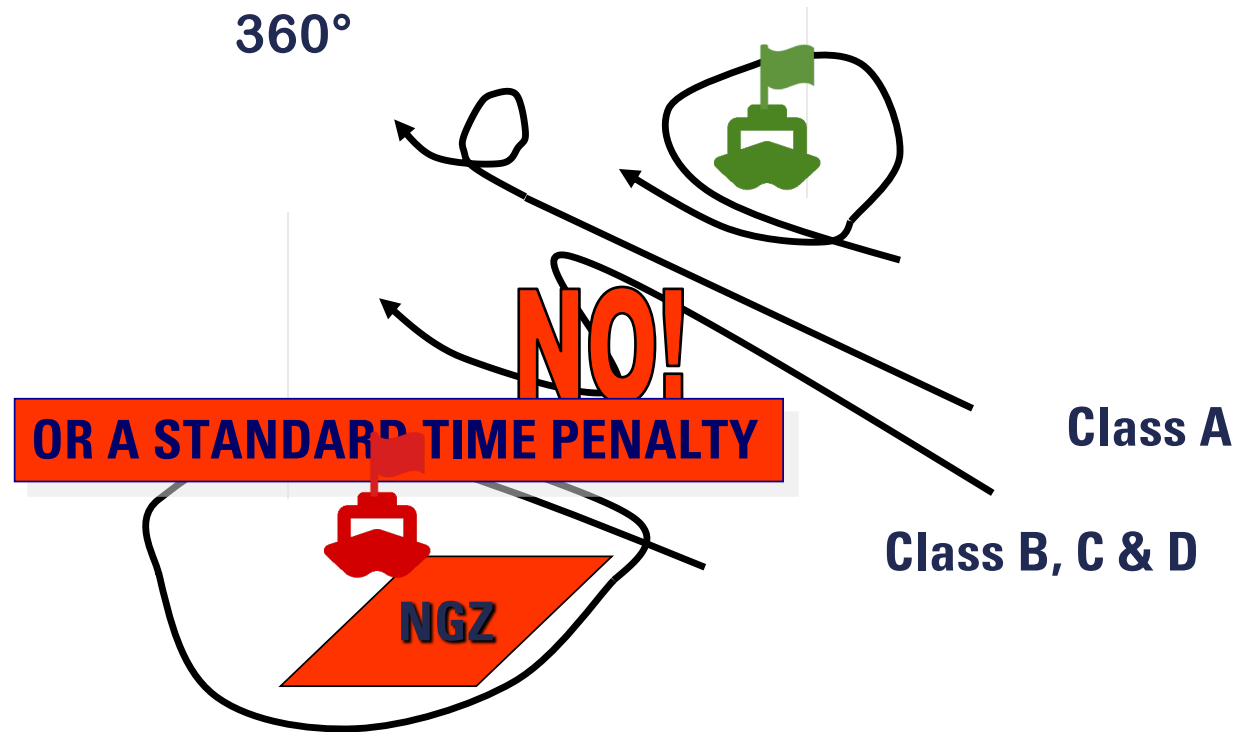
RACE START BASICS:

- Race Control on stby VHF CH 77
- Don't be early!
- ALL VESSELS RECORD YOUR INDIVIDUAL START TIME
- PLEASE STAY AWAY FROM THE START BOX UNTIL 20 MINS BEFORE START
- ENGINE MUST NOT BE USED LESS THAN 20 MINS BEFORE THE START (UNLESS MORE THAN 1NM FROM THE START LINE)



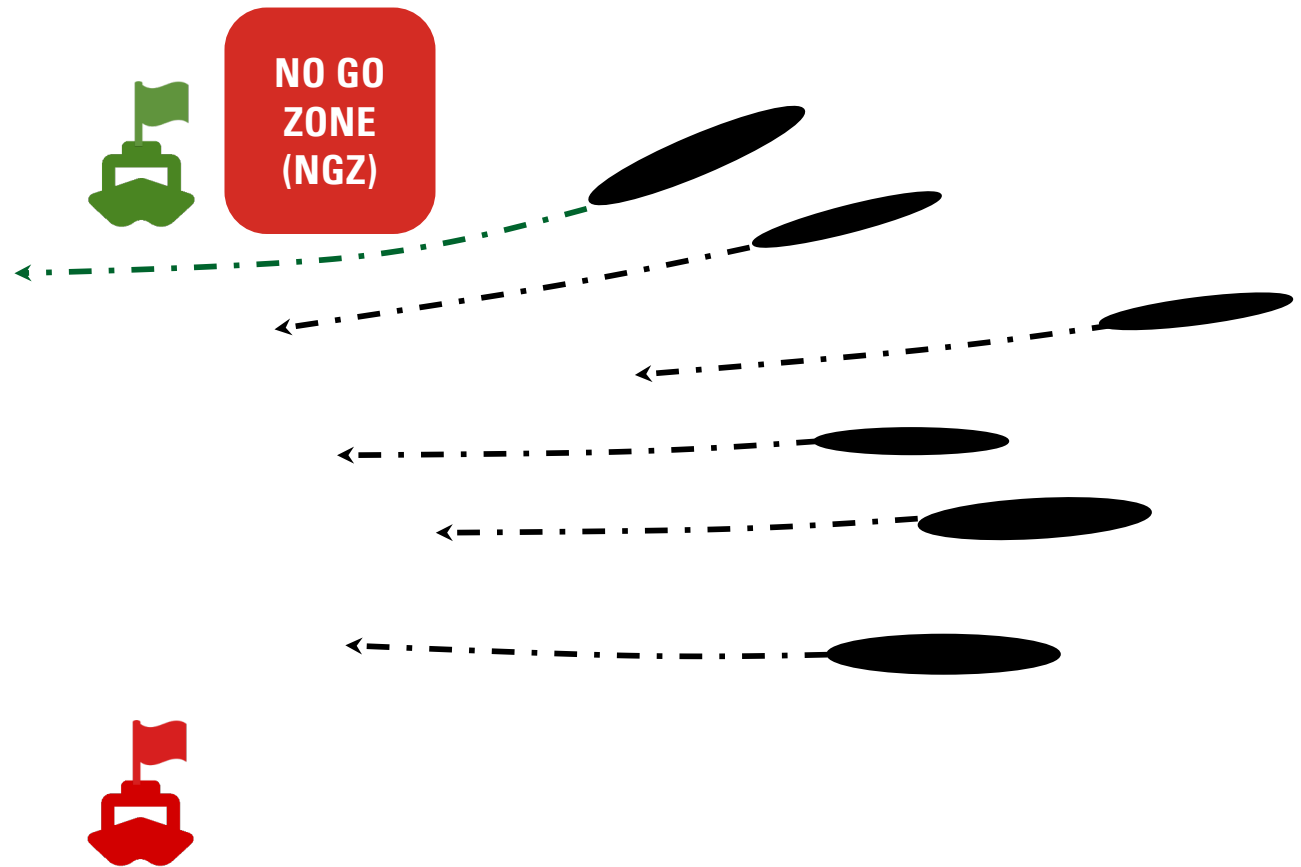
RACE START

Rule 19 – Recalls & Crossing the Start Line early



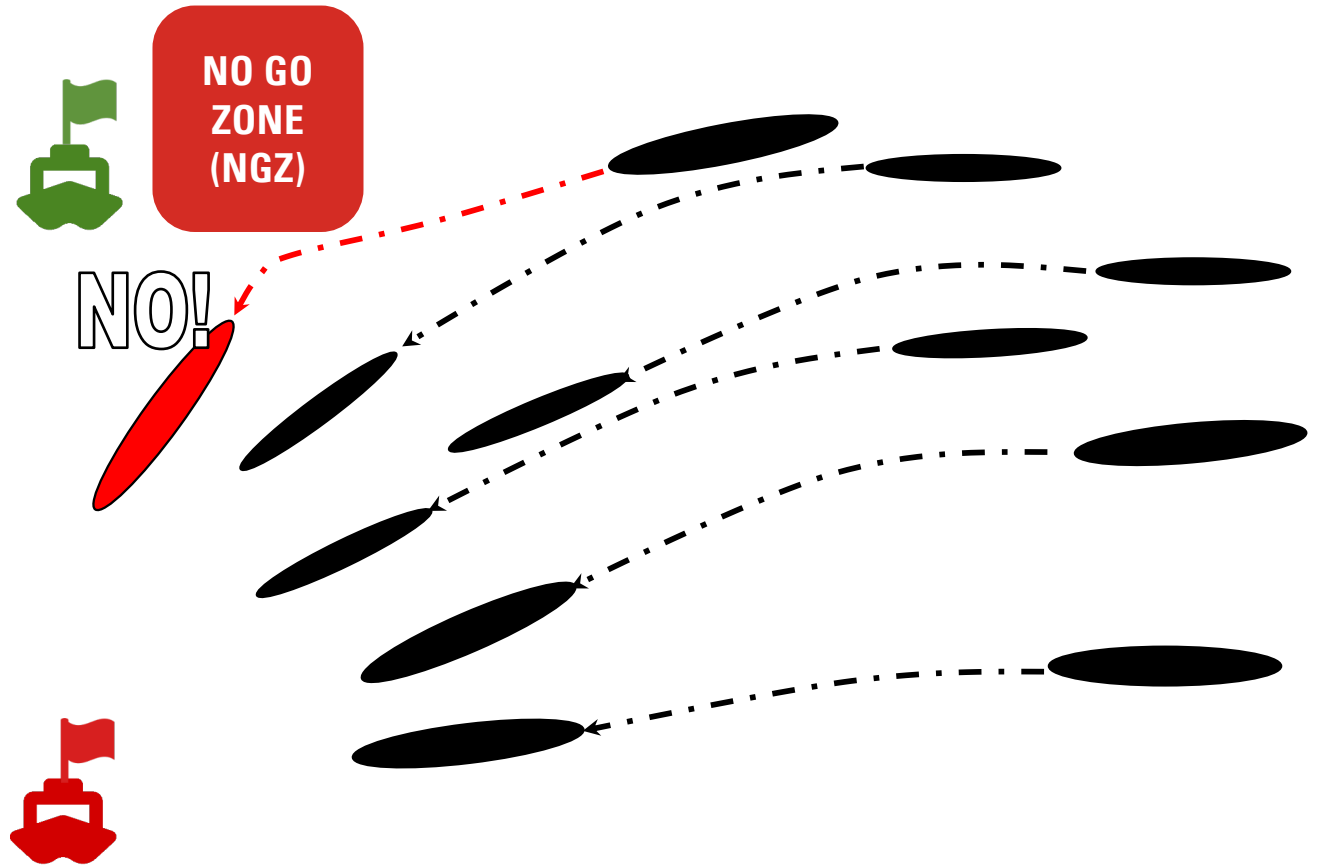
Sail Training International

RACE START



Rule 19 – Recalls & Crossing the Start Line early

RACE START



Rule 19 – Recalls & Crossing the Start Line early

RACE COURSE



Sail Training International

RACE COURSE

RACE 1 – LE HAVRE TO DUNKIRK - RACE COURSE

COURSE

Start Area

Starboard end	49° 41.0' N	000° 03.5' W
Port end	49° 39.0' N	000° 03.5' W

Waypoint 1	49° 33.0' N	000° 36.6' W	TO STARBOARD
-------------------	-------------	--------------	---------------------

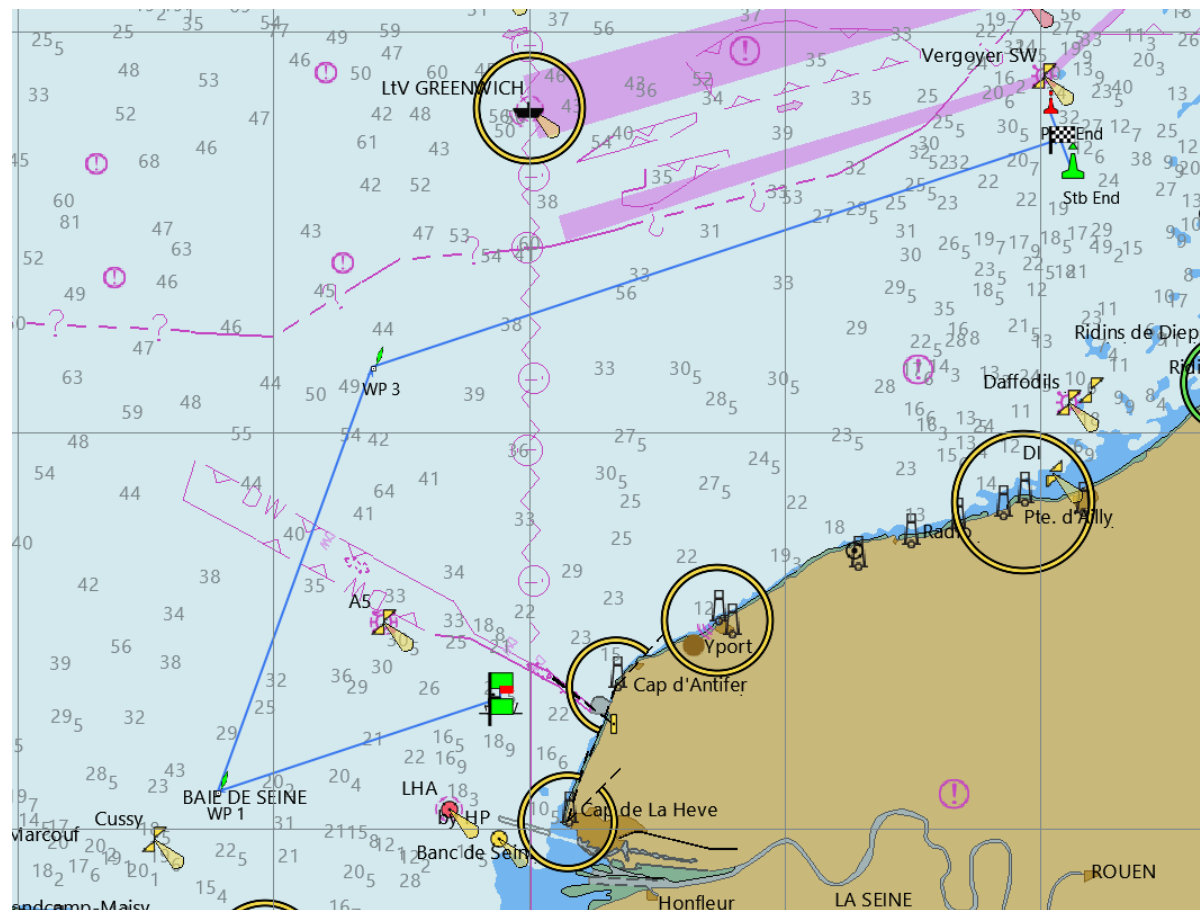
Waypoint 2	50° 05.0' N	000° 18.5' W	TO STARBOARD
-------------------	-------------	--------------	---------------------

Finish Line

Port end	50° 24.1' N	001° 01.0' E
Starboard end	50° 19.4' N	001° 03.7' E



Sail Training International



RACE COURSE

RACE 1: LE HAVRE TO DUNKIRK - RACE COURSE



Sail Training International

EXCLUSION ZONES

All Traffic Separation Schemes, Wind Farms, and Oil/Gas Facilities are excluded from the race course and must be treated as NO-GO ZONES.



Sail Training International

RACE COMMUNICATIONS

Mal Riley



Sail Training International

RACE COMMUNICATIONS

Your YB tracker will transmit every 60 minutes.

Additionally within 2nm of the Starting Area, WP1, WP2 and Finish Line YB tracker will transmit every 10 minutes.



HOW TO FOLLOW:

<https://sailtraininginternational.org/yb-tracking-2025/>



Sail Training International

RACE COMMUNICATIONS

COMMS OFFICERS: Malcom RILEY & Helene LERNER

CALL SIGN 'RACE CONTROL'

email: commsofficer1@mailasail.com

Primary Working Frequency VHF CH77

Secondary Working Frequency HF 4146

Race Director (WHATSAPP, TEXT MESSAGE & CALLS, GARMIN, IRIDIUM) - + 48 501 025 799

Please make a test today!



Sail Training International

RACE COMMUNICATIONS

2 Schedules per day

TEST VHF communications	0758 and 1658 UTC
Sat communications	0800 and 1700 UTC
Voice communications	0815 and 1715 UTC (VHF CH 77, then HF 4146)
Race Start Time Comms Schedule	1715 UTC 7 July (Monday)



Sail Training International

RACE COMMUNICATIONS

The communications officer will call each vessel as listed in the schedule.

Pass your Lat and Long when called: e.g: 55 27 N 08 26 W/E (just degrees & minutes)

The communications officer will pass back your race placings (Class and Overall)

Any relevant weather information will be broadcast at the end of the schedule , along with any other race related information.

Please maintain **Radio Silence** during the schedules.



Sail Training International

RACE COMMUNICATIONS

COMMS VESSEL – DAR MŁODZIEŻY

STBY COMMS VESSEL - ROYALIST

Any vessel not able to contact 'Race Control' by Radio can use any of the alternative methods:

- SMS to Race Director: +48 501 025 799
- Relay through another vessel (competing or commercial)
- Any other method



Sail Training International

RACE COMMUNICATIONS

FINISHING THE RACE:

Pass your Finish Time **(to the nearest second)**, future intentions, retirements and ETA for DUNKIRK to RACE CONTROL

Remain on communications schedule until stood down by RACE CONTROL

THIS INCLUDES VESSELS THAT HAVE RETIRED AND VESSELS THAT HAVE FINISHED



Sail Training International

RACE COMMUNICATIONS

NO REPORTS!

If ONE Report Missed

- *Noted and STP may be awarded*

If TWO Reports Missed

- *Concerned and another STP may be awarded*

If THREE Reports Missed

- *another STP may be awarded and may be DSQ*

MRCC may be informed and SAR considered



Sail Training International

MET REPORT

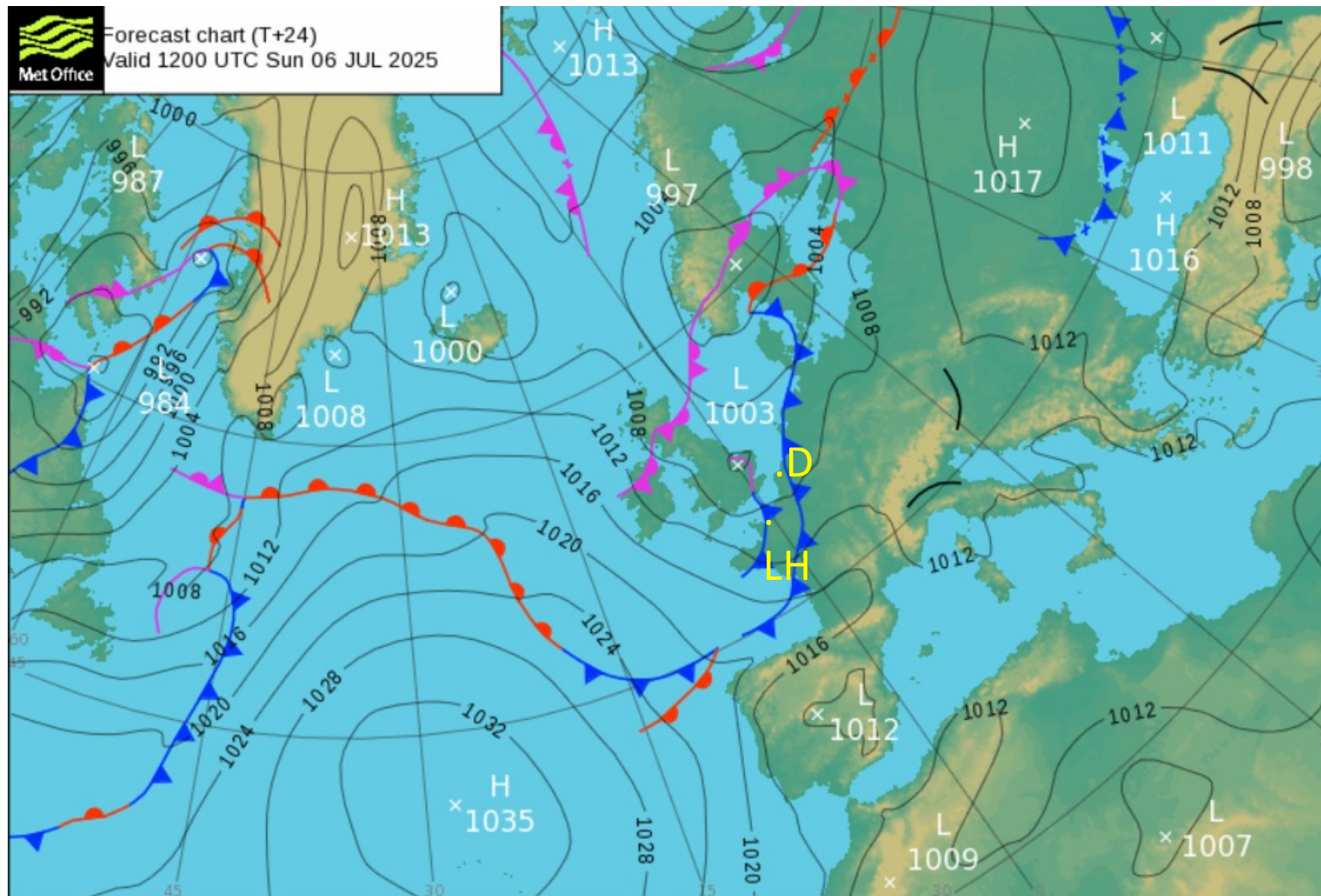
Penny Tranter



Sail Training International



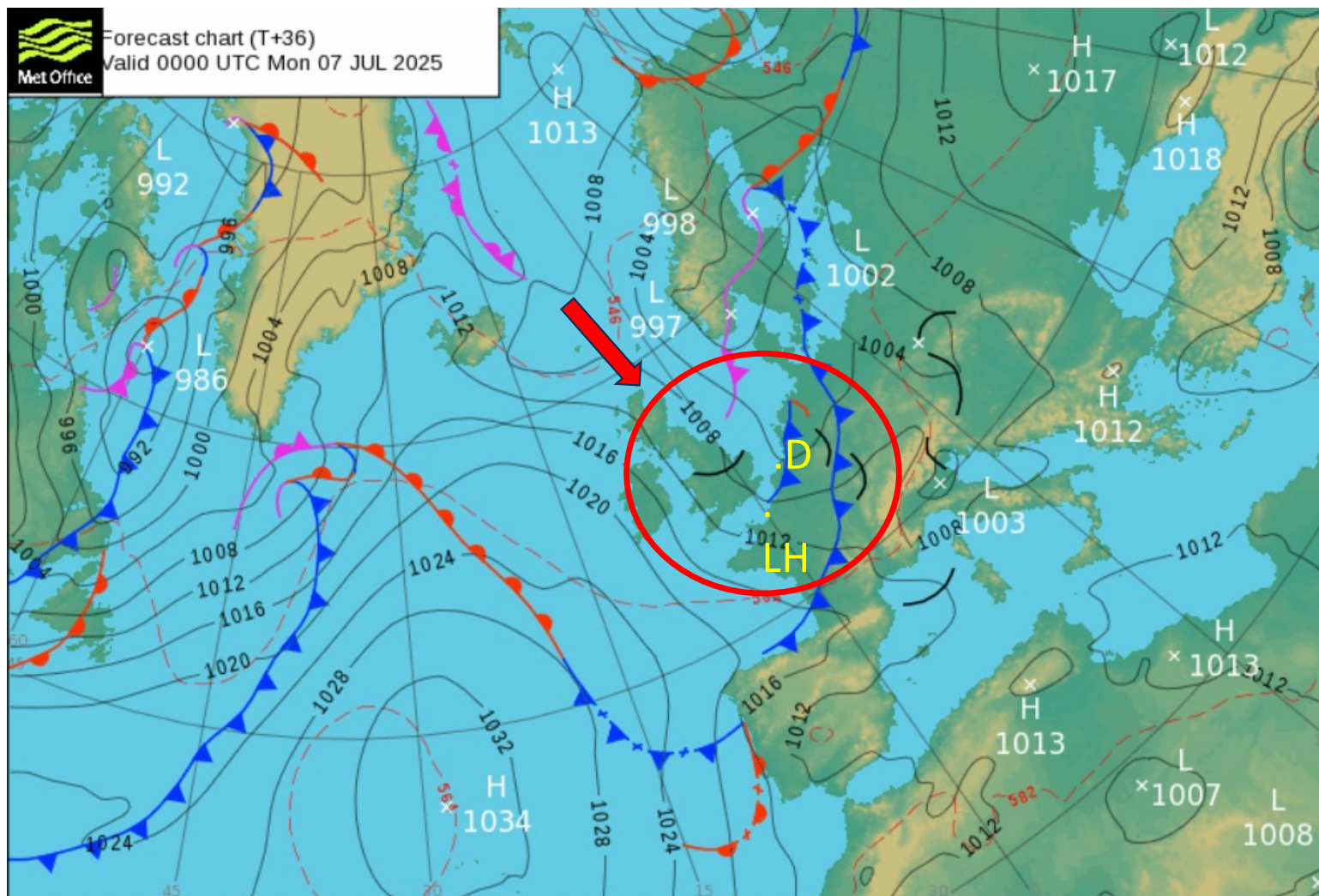
Forecast chart (T+24)
Valid 1200 UTC Sun 06 JUL 2025



Sail Training International

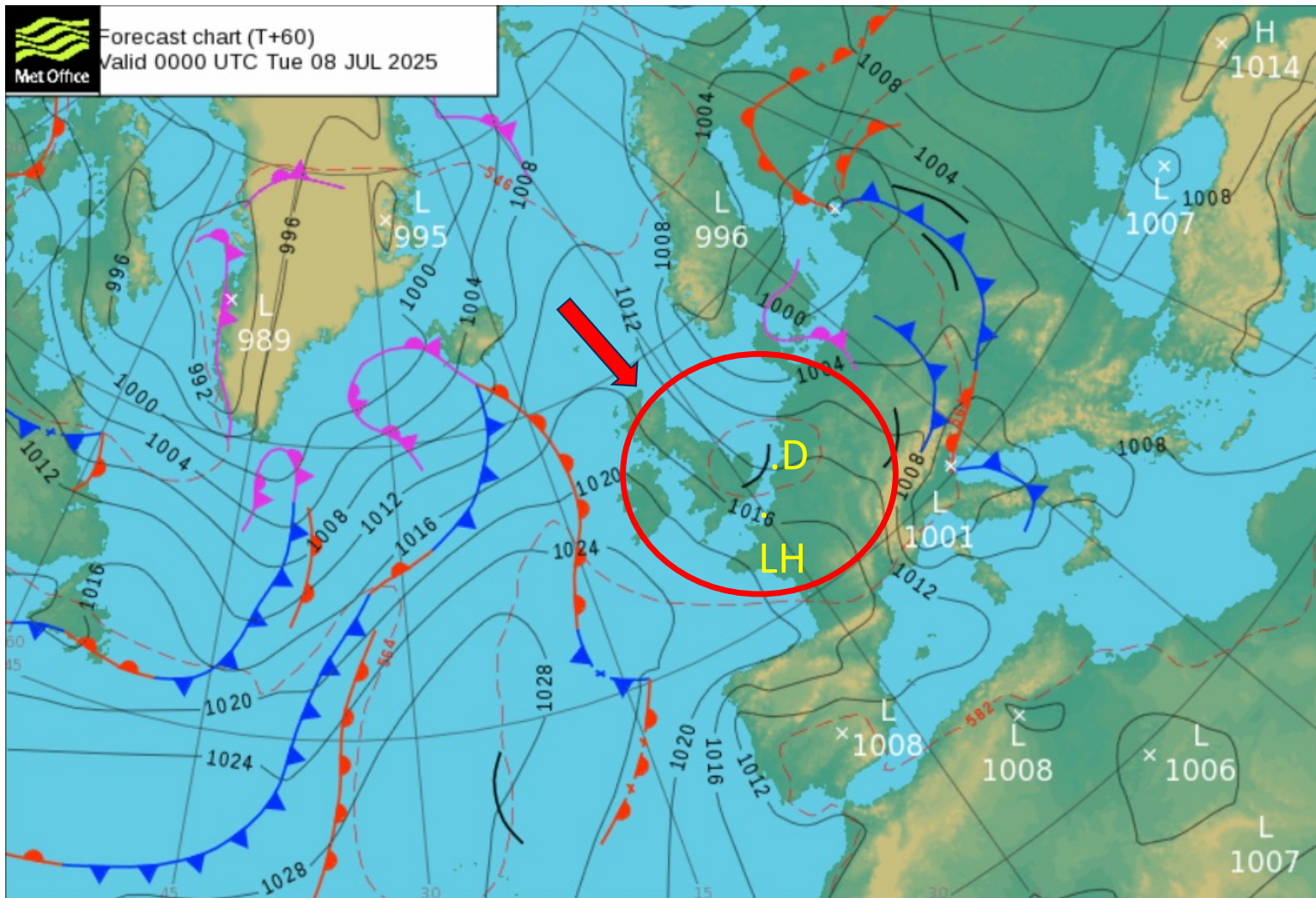


Forecast chart (T+36)
Valid 0000 UTC Mon 07 JUL 2025



Sail Training International

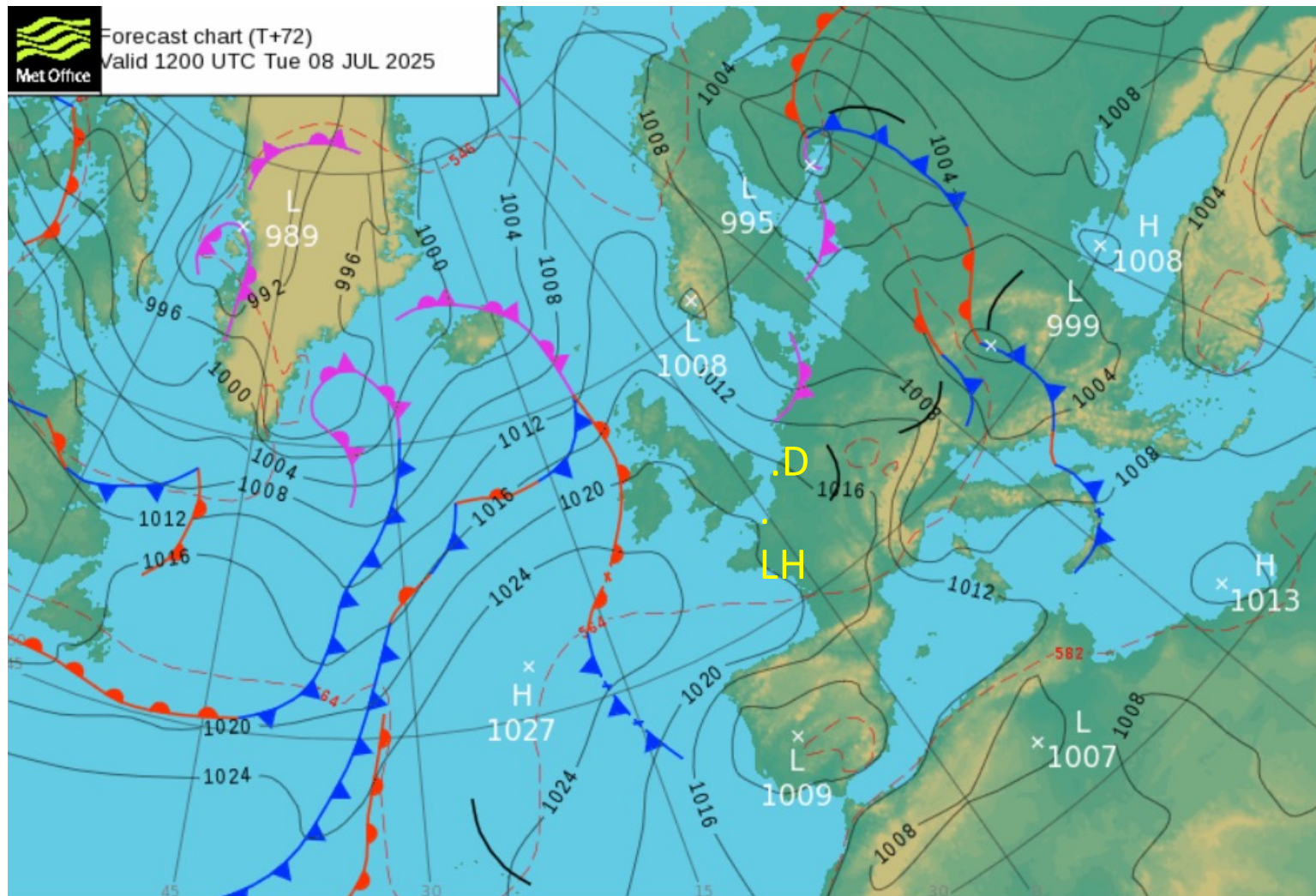




Sail Training International



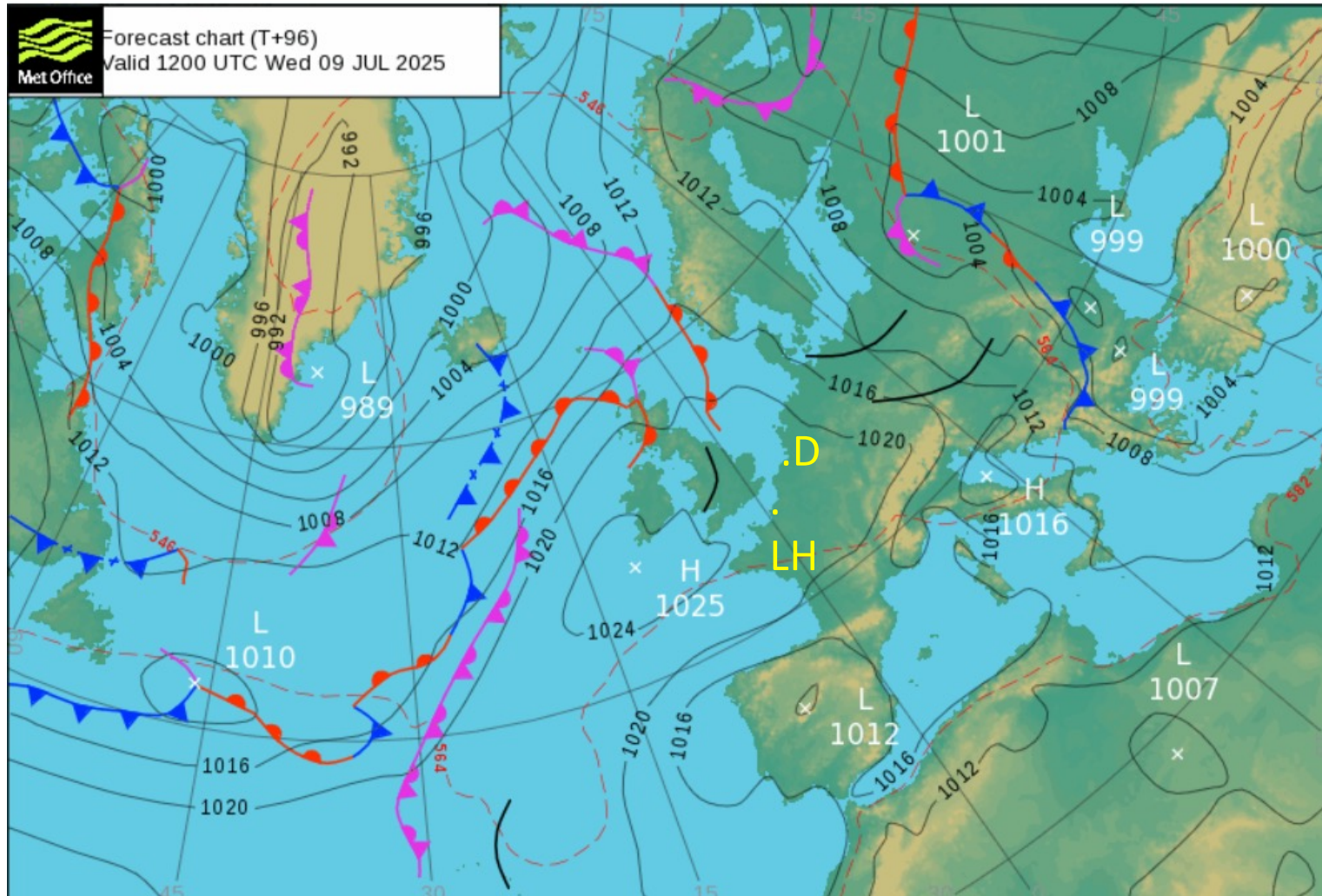
Forecast chart (T+72)
Valid 1200 UTC Tue 08 JUL 2025



Sail Training International



Forecast chart (T+96)
Valid 1200 UTC Wed 09 JUL 2025



Sail Training International

FORECAST OVERVIEW – WINDS/SEA STATE

- TODAY

Forecast winds: W/WNW 12-18kt, gusts 20-28kt, becoming late afternoon/early evening WNW 16-22kt, gusts 26-32kt

Wind waves: 0.5 to 0.8m up to 1.5 to 1.7m later, 4-5s



Sail Training International

FORECAST OVERVIEW – WINDS/SEA STATE

- MONDAY morning and early afternoon

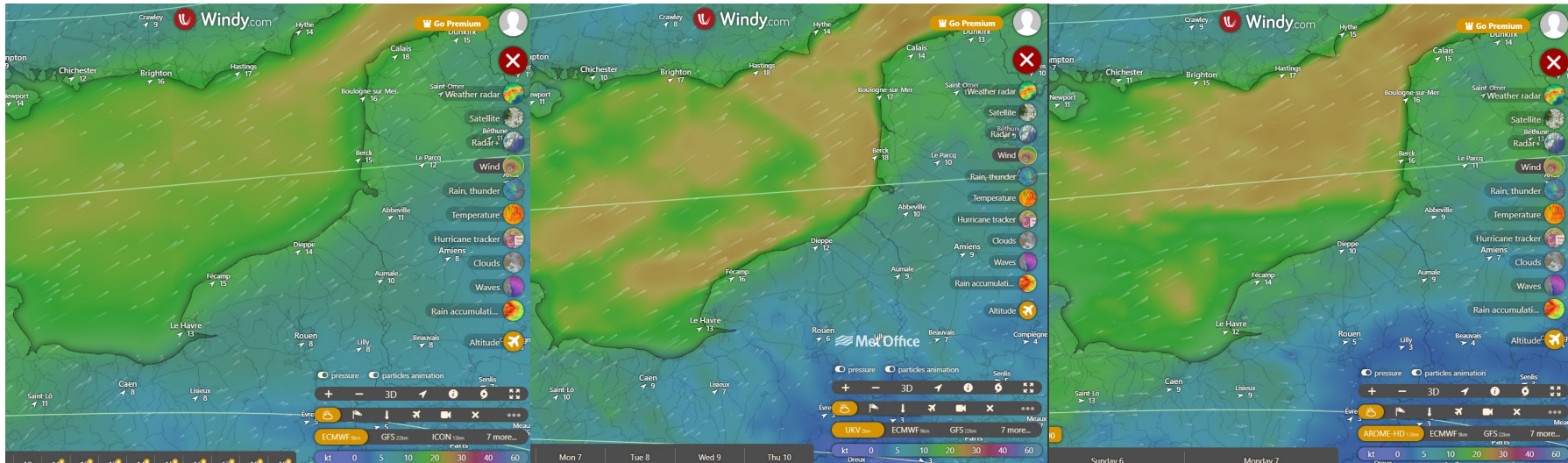
Forecast winds: WNW becoming N/NW 15 to 22kt mean, becoming 20-24kt at times, gusts 26 to 32kt

Very shifty winds with lots of lulls and gusts

Wind waves: 1.5m, 3 to 5s



Computer weather models (NWP numerical weather prediction)



- These three forecasts are for the same time on Saturday evening – they have a lot in common – but also have differences. Same wind direction and stronger winds through the north-east of the area, but some showing gustier areas
- If you use web interactive weather forecasting services look for the high-resolution/small scale models eg UKMO 2km and AROME 1.3km/2.5km – these usually show areas of lulls and gusts more clearly
- ECMWF 9km is rated as one of the top weather models in the world



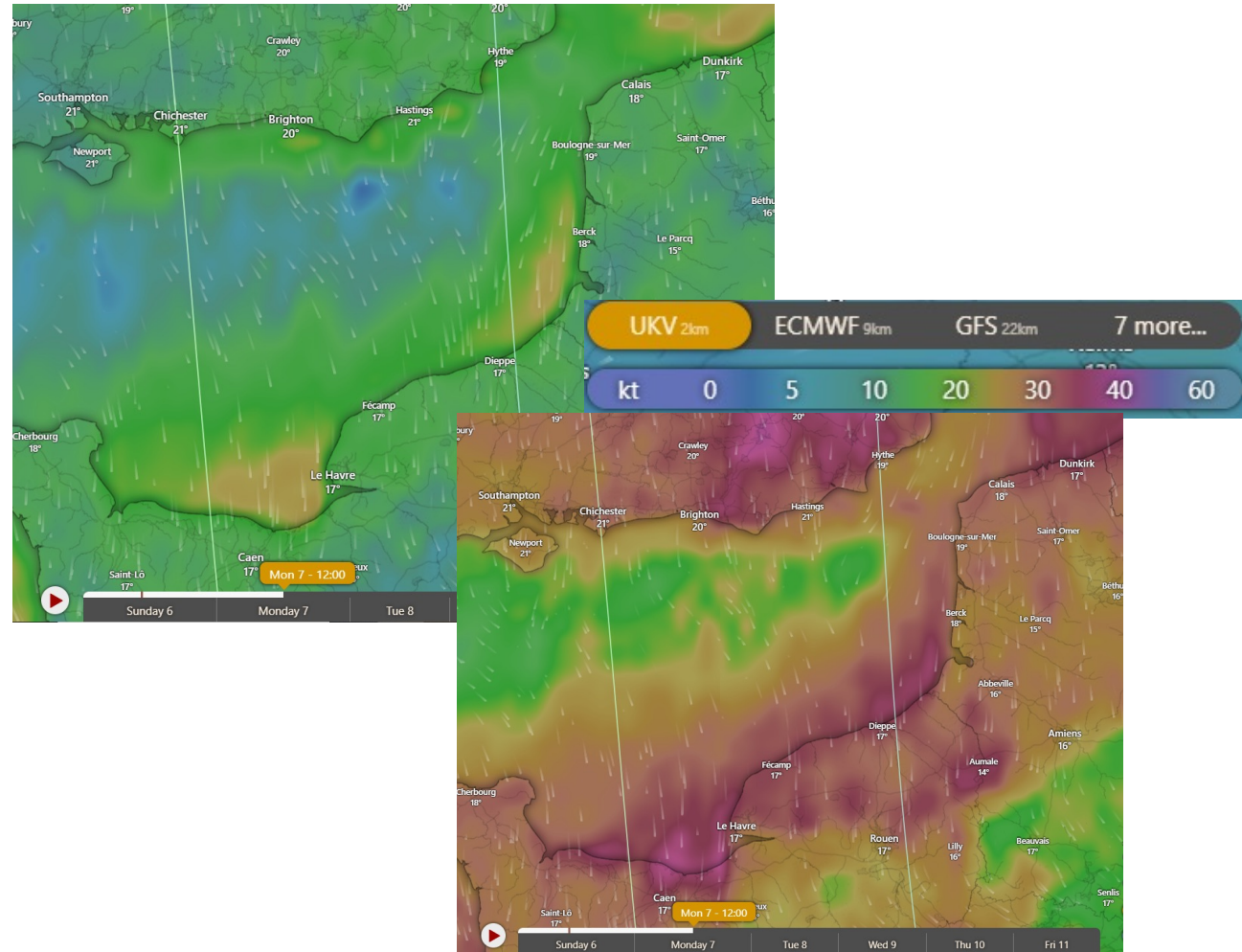
Overall weather pattern – not specific

Monday 12:00 UTC

Forecast winds: NW/N 15-22kt, gusts
26-32kt

The winds will be shifty, with lulls and
gusts, especially around big clouds or
showers

Wind waves: 1.0 to 1.5m, 3 to 5s



Sail Training International

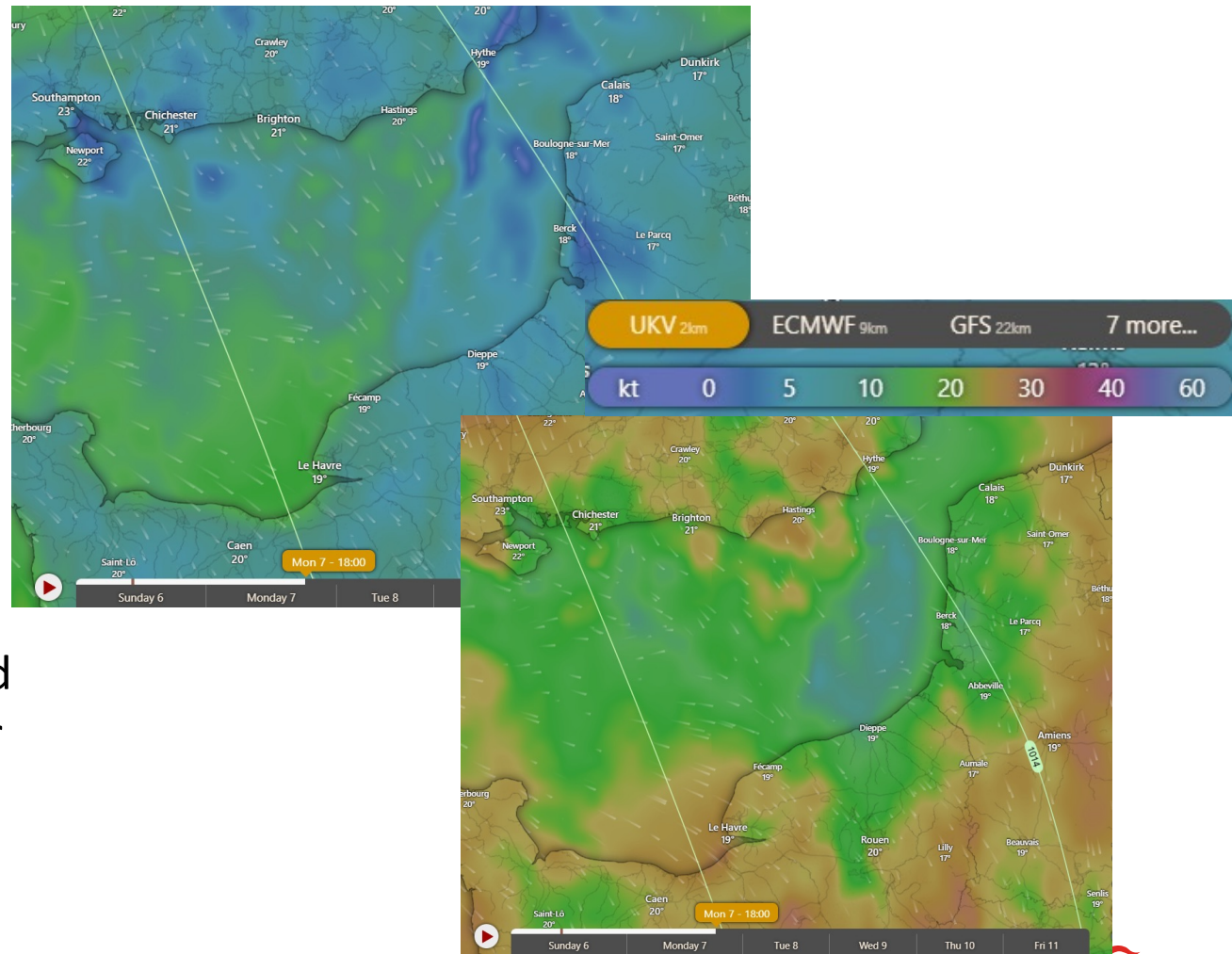
Overall weather pattern – not specific

Monday 18:00 UTC

Forecast winds: NW/N 15-22kt, gusts 26-32kt becoming and backing late afternoon/early evening WNW/NW 12-18, gusts 18-25kt

The winds will be shifty, with lulls and gusts, especially around big clouds or showers

Wind waves: 0.8 to 1.3m, 4 to 6s



Sail Training International

Overall weather pattern – not specific

Tuesday 00.00 UTC

Forecast winds: WNW/NW 10-20kt
Gusts 18-30kt, possibly up to 32kt

The winds will be shifty, with lulls and gusts, especially around big clouds or showers

Wind waves: 0.8 to 1.3m, 4 to 6s sec



Sail Training International

Overall weather pattern – not specific

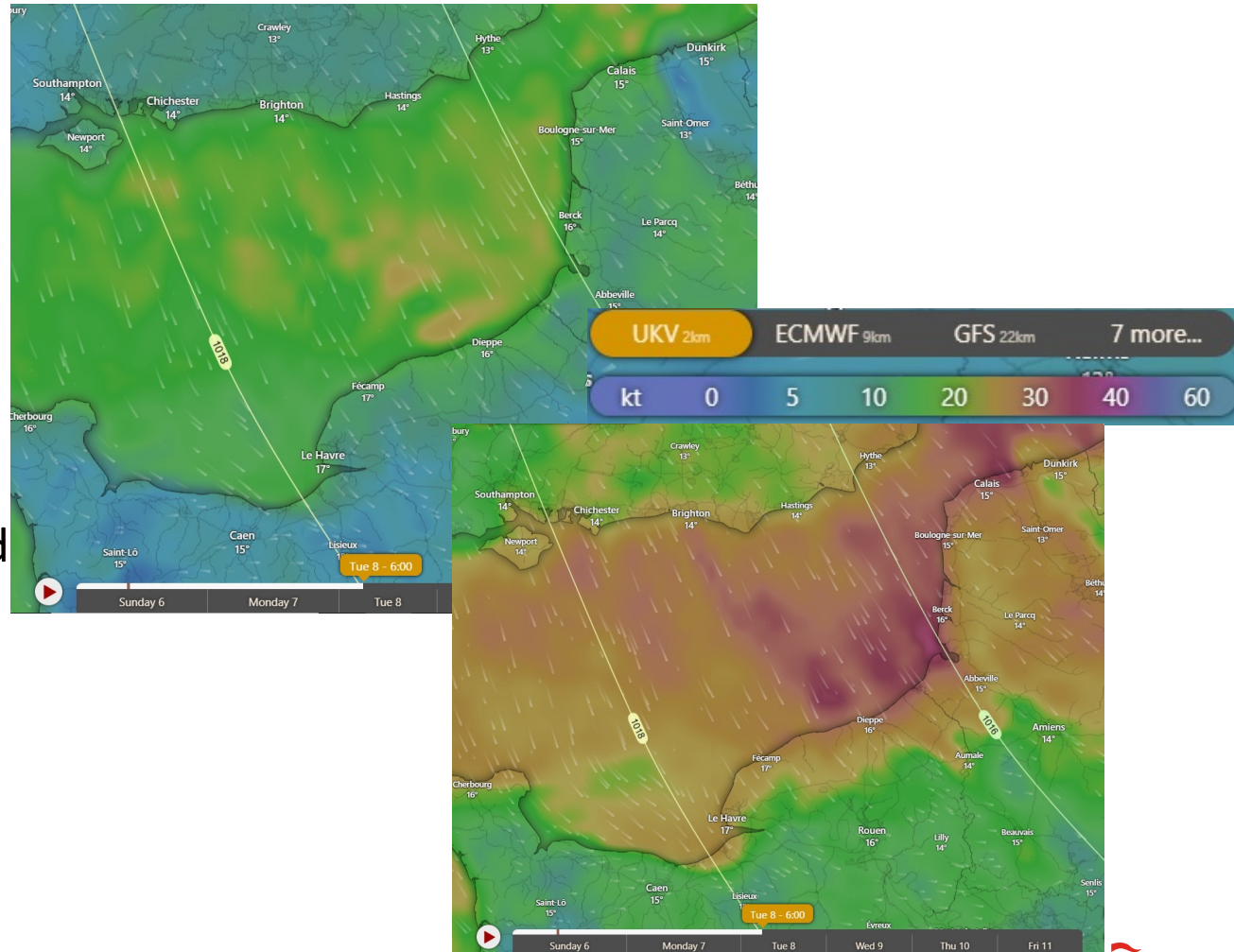
Tuesday 06.00 UTC

Forecast winds: WNW/NW 12-22kt

Gusts 20-30kt, possibly up to 34kt

The winds will be shifty, with lulls and gusts, especially around big clouds or showers

Wind waves: 1.0 to 1.5m, 4 to 5s



Sail Training International

Overall weather pattern – not specific

Tuesday 12.00 UTC

Forecast winds: backing to WNW/NW
8-16kt

Gusts 18-25kt

The winds will be shifty, with lulls and gusts, especially around big clouds or showers

Wind waves: 0.8 to 1.3m, 4 to 5s



Sail Training International

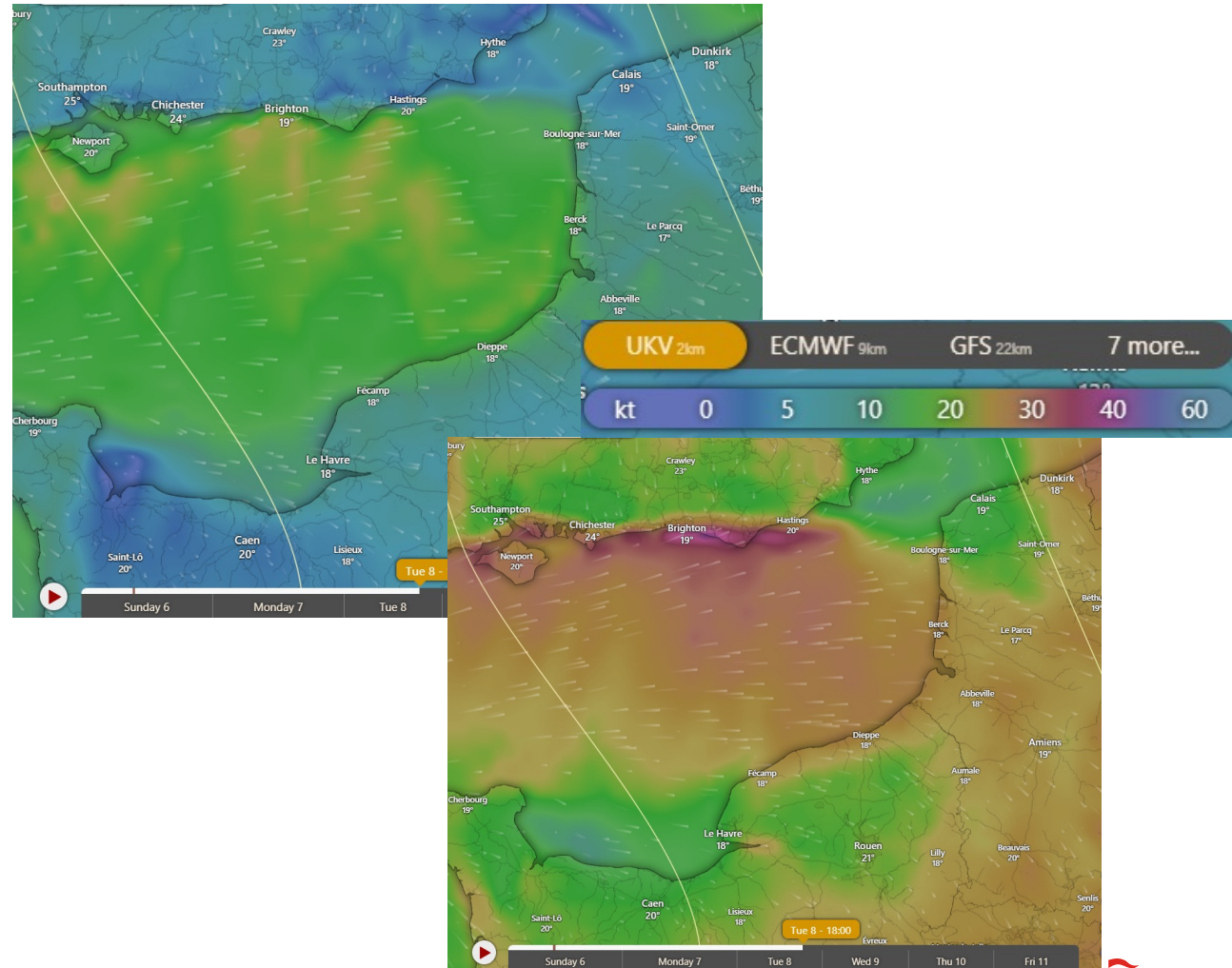
Overall weather pattern – not specific

Tuesday 18.00 UTC

Forecast winds: backing to WNW/NW
occasionally WS 15-22kt
Gusts 24-30kt

The winds will be shifty, with lulls and
gusts, especially around big clouds or
showers

Wind waves: 0.5 to 1.0m, 4 to 5s



Sail Training International

Overall weather pattern – not specific

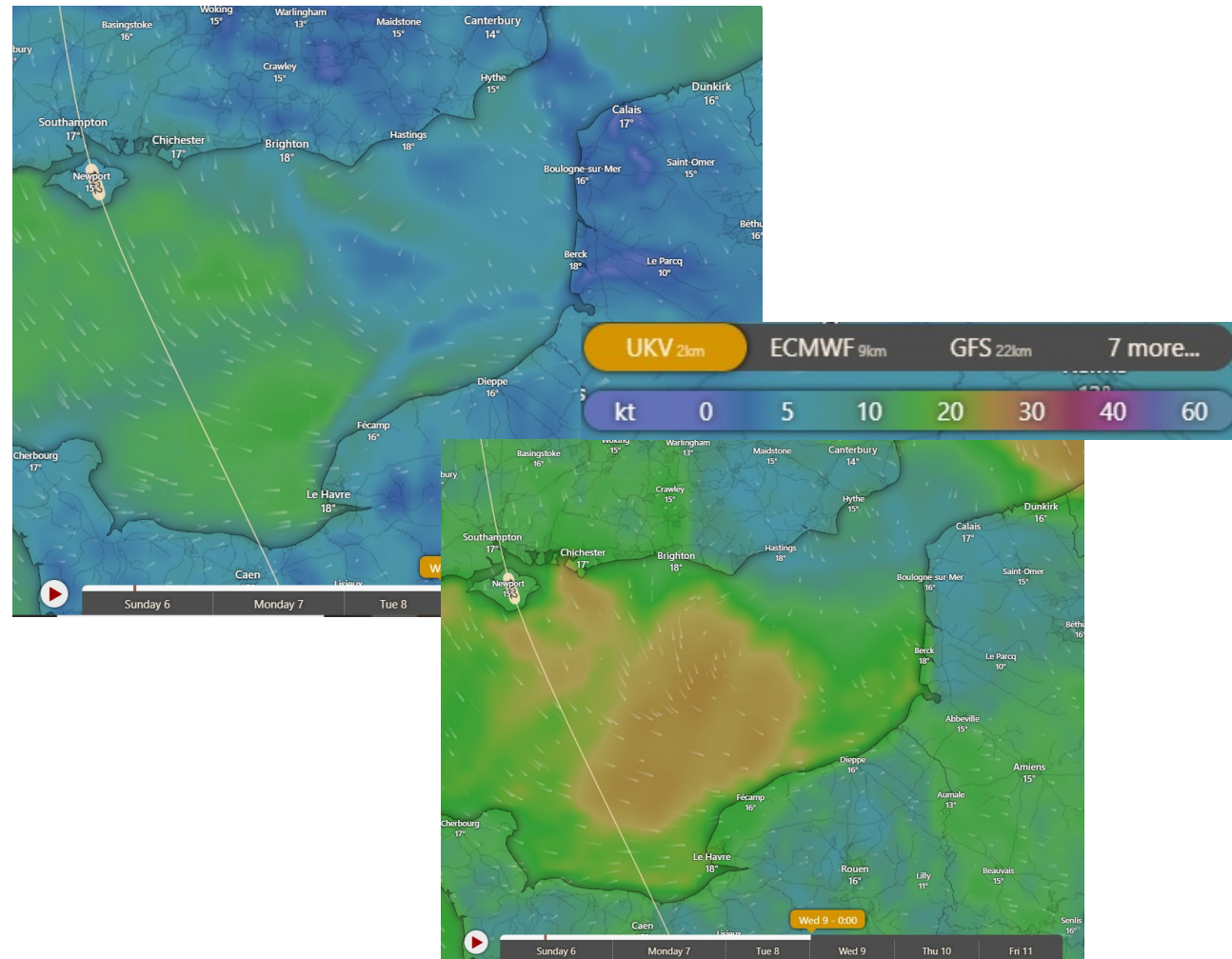
Wednesday 00.00 UTC

Forecast winds: becoming more variable W to N, occasionally SW, 5 - 12kt

Gusts 15-25kt

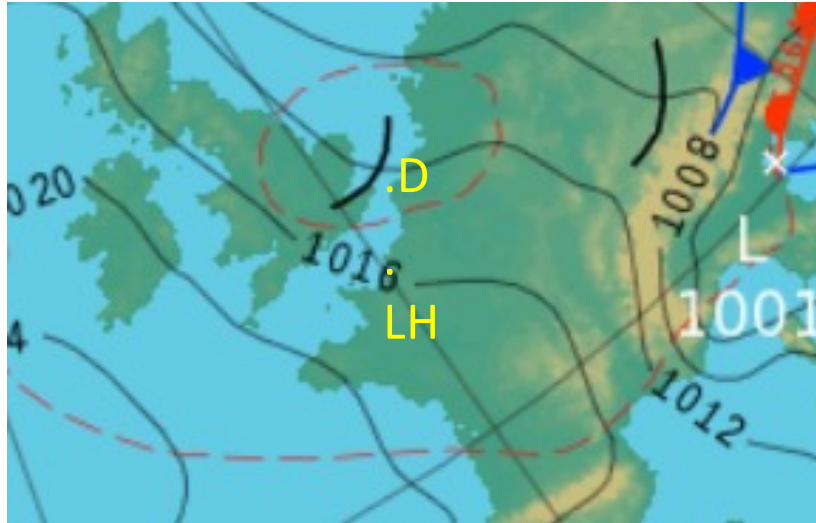
The winds will be shifty, with lulls and gusts, especially around big clouds or showers

Wind waves: 0.5 to 1.0m, 4 to 5s



Sail Training International

Trough crossing



For example Monday night

A trough is not a boundary but an elongated area of lower air pressure. There are changes in wind direction across a trough, but there is no change in air mass.

While not specifically a surface boundary, troughs reflect the change in atmospheric conditions in the upper atmosphere. As such, troughs can be areas where showers and thunderstorms can form.



Sail Training International

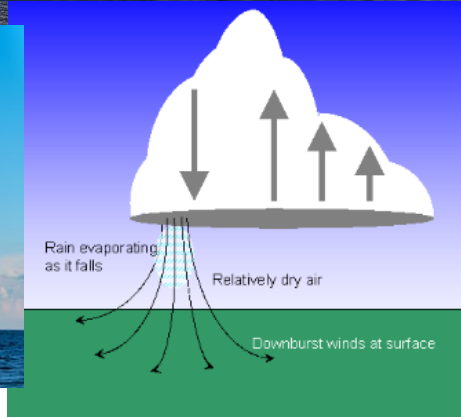
Trough
Crossing

Clouds
expected



Sail Training International

Clouds expected



- Lots of cumulus – some large and some small
- Check distance of base to top of cloud – if larger than distance between sea and the cloud base – likely to get a shower
- Increase in gust speeds and wind direction shifts in and around large cumulus clouds, especially in showers
- Ragged base under large clouds indicates strong gusts and wind shifts (due to downdrafts) – especially expected at start of race



OTHER BUSINESS



Sail Training International


FEEDBACK FORM – LE HAVRE

<https://forms.gle/ySDVe5Ljxr5cbFKs5>



Sail Training International

PINK DECLARATIONS



DECLARATION

As Captain/Master of the vessel (name of vessel)

- I declare that I am duly qualified and hold all necessary certificates to enable me to command the sail training vessel named above as a participant in the Race and/or Cruise-in-Company and that, if required by the laws of the country in which it is registered or to the home port, my vessel is legally licensed and insured to sail with sails and take part in all programmed activities whether in port or at sea (including racing).
- I confirm that I have received a copy of Tall Ships Races International Limited Racing Rules and Special Regulations 2020 Edition, which I have read and understood and that I, my vessel and crew, comply in all respects with those Rules and will continue to do so throughout the Race Series.
- I have carried out an inspection of the life saving appliances on board my vessel and am satisfied that all such equipment is specified in the above report is available and in proper working order.
- I declare that my vessel is seaworthy and that the identity characteristics of sea acceptable to the sea area and vessel in which the Race will take place.
- I acknowledge that while by a representative of Tall Ships Races International Ltd (hereinafter referred to as "TSR") in regard to this Vessel Life Saving Appliances Check List am only ensuring that participants comply with the Special Regulations and the Race Officials or representatives of Tall Ships Races International Ltd and their agents are not responsible for the vessel's performance or any liability or other equipment in the race of their own risk and responsibility. Tall Ships Races International Ltd is not liable for any incident to the vessel entered and that all on board will take part in the race of their own risk and responsibility.
- The decision to start and continue in all Ships Races International Limited Race or Cruise-in-Company is the responsibility of the Race Committee. If, in any report of any incident to the vessel entered and that all on board will take part in the Race or Cruise-in-Company vessel I am completely satisfied that the vessel and the crew are fit to do so.
- I understand that the Race Committee may not permit my vessel to take part in the Race or Cruise-in-Company if they in their absolute discretion consider my vessel or its crew not fit to take part in a Race or Cruise-in-Company for any reason whatsoever and that the Race Committee shall not be obliged to give any reason for that decision.
- I agree that in any dispute or matter relating to this Race or Cruise-in-Company, the decision of Tall Ships Races International Ltd or the Race Committee appointed by them, shall be final.
- I confirm that no one under the age of 16 years of age will be on board, as required by the Racing Rules.

RACE 1		RACE 2		RACE 3 CRUISE-IN-COMPANY		RACE 4	
NAME OF CAPTAIN/MASTER (PRINT NAME)	NAME OF CAPTAIN/MASTER (PRINT NAME)	NAME OF CAPTAIN/MASTER (PRINT NAME)	NAME OF CAPTAIN/MASTER (PRINT NAME)	NAME OF CAPTAIN/MASTER (PRINT NAME)	NAME OF CAPTAIN/MASTER (PRINT NAME)	NAME OF CAPTAIN/MASTER (PRINT NAME)	NAME OF CAPTAIN/MASTER (PRINT NAME)
SIGNATURE OF CAPTAIN/MASTER	SIGNATURE OF CAPTAIN/MASTER	SIGNATURE OF CAPTAIN/MASTER	SIGNATURE OF CAPTAIN/MASTER	SIGNATURE OF CAPTAIN/MASTER	SIGNATURE OF CAPTAIN/MASTER	SIGNATURE OF CAPTAIN/MASTER	SIGNATURE OF CAPTAIN/MASTER
MOBILE TELEPHONE NUMBER	MOBILE TELEPHONE NUMBER	MOBILE TELEPHONE NUMBER	MOBILE TELEPHONE NUMBER	MOBILE TELEPHONE NUMBER	MOBILE TELEPHONE NUMBER	MOBILE TELEPHONE NUMBER	MOBILE TELEPHONE NUMBER
EMAIL ADDRESS	EMAIL ADDRESS	EMAIL ADDRESS	EMAIL ADDRESS	EMAIL ADDRESS	EMAIL ADDRESS	EMAIL ADDRESS	EMAIL ADDRESS
DATE	DATE	DATE	DATE	DATE	DATE	DATE	DATE
ESTRACE OFFICIAL CHECKING REPORT (NAME)	ESTRACE OFFICIAL CHECKING REPORT (NAME)	ESTRACE OFFICIAL CHECKING REPORT (NAME)	ESTRACE OFFICIAL CHECKING REPORT (NAME)	ESTRACE OFFICIAL CHECKING REPORT (NAME)	ESTRACE OFFICIAL CHECKING REPORT (NAME)	ESTRACE OFFICIAL CHECKING REPORT (NAME)	ESTRACE OFFICIAL CHECKING REPORT (NAME)



Sail Training International

The Tall Ships Races Trainee Feedback Questionnaire



Complete our online survey for a chance to win some epic prizes!



HAVE YOUR SAY!

SCAN THE QR CODE TO FILL OUT THE FORM

DEADLINE FOR COMPLETION: 31ST AUGUST 2025



plus...

A FREE Voyage
during The Tall Ships Races
2026



Sail Training International

FOLLOW US ON SOCIAL MEDIA



@TALLSHIPSRAVES



SAIL TRAINING INTERNATIONAL

FRIENDSHIP TROPHY



Sail Training International

THANK YOU



Sail Training International