

TALL SHIPS RACES 2025

Captains' Briefing – ABERDEEN



Sail Training International

CAPTAINS' BRIEFING

- Welcome and Roll Call
- Meet the Team
- Undocking and Tall Ships Parade
- Race Start and Course
- Race Communications
- Weather Forecast
- Arrival Information & C-in-C – KRISTIANSAND
- Other Business



Sail Training International

CAPTAINS' BRIEFING



STI & RaceMgt News Channel
WhatsApp group



Captain's Social Club
WhatsApp group



Sail Training International

ROLL CALL



Sail Training International

MEET THE TEAM



Sail Training International

STI RACE TEAM ABERDEEN



Magda Makowska
Race Director



Harry Allaway
Assistant Race Director



Ian Lerner
Assistant Race Director



Laura Blyth-Brown
Race Administrator



Vanessa Mori
Commercial Director



Helene Lerner
Vessel Inspector/Comms Officer



Penny Tranter
Chartered Meteorologist



Mal Riley
Vessel Inspector/Comms Officer



Zuzanna Śmierzchalska
Vessel Inspector



Phoebe Leach
Youth Council Rep



Lesley Sale
Vessel Inspector/Comms Officer



Becky Nelson
Commercial Assistant



Abi Haywood
Media Assistant



Krzysztof Romanski
Official Photographer



Max Mudie
Official Videographer



Sail Training International

UNDOCKING & TALL SHIPS PARADE



Sail Training International



TALL SHIPS ABERDEEN

COME ABOARD!

HOST PARTNERS



Parade of Sail Introduction



Overview

We would like to express our sincere thanks to all captains and crews for your participation in the Tall Ships event. Your professionalism and seamanship throughout have been exemplary and greatly appreciated.

We hope you and your crews have enjoyed your time in Aberdeen and experienced a warm welcome and our best hospitality during your stay.

Parade Structure

The Parade of Sail will be split into five phases, designed to ensure a safe, smooth, and visually impressive departure from the Port of Aberdeen.

- **Official Parade Start Time:** 10:00 (Local Time)
- **Parade End Time:** 14:00
- **Vessel Traffic Services (VTS)** will coordinate vessel movements and timings throughout.
- **Pilotage and Towage arrangements** will follow arrival procedures **unless alternative arrangements have been requested and agreed in advance.**



Phase 1

Coordination and Pre-departure shifting



Phase 1

Vessel Coordination – Managed by VTS

- **Vessel Traffic Services (VTS)** will call vessels individually to arrange clearance and assign parade order.
- Communications will be conducted on **VHF Channel 12** – all vessels must maintain a listening watch throughout.
- Timing and sequence will be dynamically managed to ensure safety and flow.
- Mooring personnel will be on station as required / requested.

Phase 1: Pre-Departure Shifting

- **Timing:** 08:30 – 09:30
- Designed to reposition vessels ahead of the parade start.
- Focused on enabling vessels to move into position early, avoiding congestion and delays later in the schedule.
- Movements will be coordinated between **VTS**.



Phase 1 - Continued

To enable a smooth start to the parade, the following 9 vessels currently berthed on pontoons will be requested to shift to outer harbour locations ahead of the parade:

Relocation Berths: Pocra Quay, and Installation Quay

Vessels to Be Repositioned:

- Cykas – Installation East
- Juan de Langara – Installation East
- Dar Szczecina – Installation East
- Esprit – Pocra South
- Op Stock 3 – Pocra South
- Swan – Pocra South/Mid
- Betty – Installation West
- Milpat – Installation West
- Belfer – Installation West

Action Required:

All listed vessels should be ready to manoeuvre promptly within the shifting window. Final instructions will be issued via **VHF Channel 12** by VTS.



Phase 2 - 5

Tall Ships Parade



Phase 2 10:00 – 11:00 approx



Parade starts at 10:00 and will be managed by VTS on Channel 12. On receiving traffic clearance vessels are to let go and sail.

Order of Sail:

- | | |
|-----------------------|-------------------------------------|
| 1. Morgenster | 15. Cykas |
| 2. Wylde Swan | 16. Juan de Langara |
| 3. Malcolm Miller | 17. Dar Szczecina |
| 4. Ortac | 18. Capitan Miranda – Pilot & 1 Tug |
| 5. Williwaw | |
| 6. Gulden Leeuw | |
| 7. Christian Radich | |
| 8. Jolie Brise | |
| 9. Rona II | |
| 10. James Cook | |
| 11. Loa | |
| 12. Kapitan Glowacki | |
| 13. Pascual Flores | |
| 14. Kapitan Brochardt | |

Phase 3 11:00 – 12:00 approx



19. Shabab Oman II – Pilot & 1 Tug

20. Rupel

21. Excelsior

22. Ocean Scout

23. Corsaro II

24. Belem – Pilot only

25. Skonnerten Jylland

26. Esprit

27. Op Stok 3

28. Swan

Phase 4 12:00 – 13:00 approx



- 29. BAP Union – Pilot & 2 Tugs
- 30. Boy Leslie
- 31. Tara
- 32. HNLMS Urania
- 33. Pogoria
- 34. Eendracht
- 35. Fryderyk Chopin
- 36. Valborg
- 37. Christiania
- 38. Betty
- 39. Milpat
- 40. Belfer
- 41. Dar Młodzieży – Pilot & 1 Tug
- 42. TS Royalist

Phase 5 13:00 – 14:00 approx



43. Thalassa

44. Ryvingen

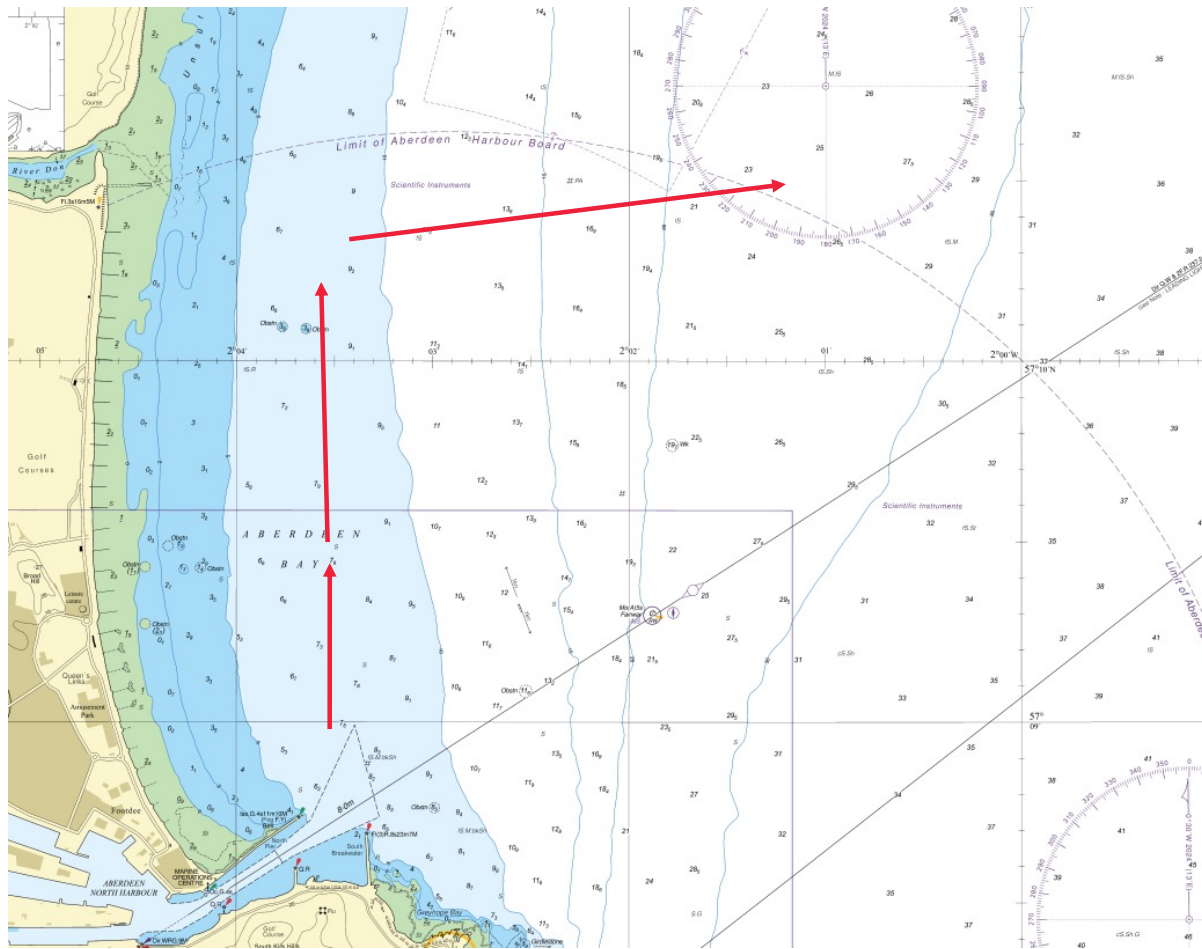
45. Alba Explorer

46. Ocean Spirit of Moray

47. Alexander Von Humboldt

48. Sorlandet

Parade Route



Race Start - Location

57°09' North

001°54' West



SEA YOU THERE

[TALLSHIPSABERDEEN.COM](https://tallshipsaberdeen.com)

HOST PARTNERS



SUPPORTED BY

EventScotland



Funded by
UK Government

RACING RULES



Sail Training International

RACING RULES UPDATES

FUNDAMENTAL RULE VII. Environmental Responsibility

Tall Ships Races International Limited strongly encourages all activities which minimise any negative impact and do not significantly harm the environment during their events.

17.2 **Gates** between two positions may be used as marks of the course. A vessel must cross the Gate Line from the direction of the last mark and must record the time when any part of her hull or equipment crosses this line.
Note The Gate Line may be used as the Finish Line (see Rule 19) if the course needs to be shortened.

17.3 **Exclusion Zones** such as Traffic Separation Schemes and other restricted areas may be published as marks of the course. These areas should not be entered unless there are safety concerns, which should be recorded on the Race Declaration (Rule 3.3)



RACING RULES UPDATES

RACE DECLARATIONS:

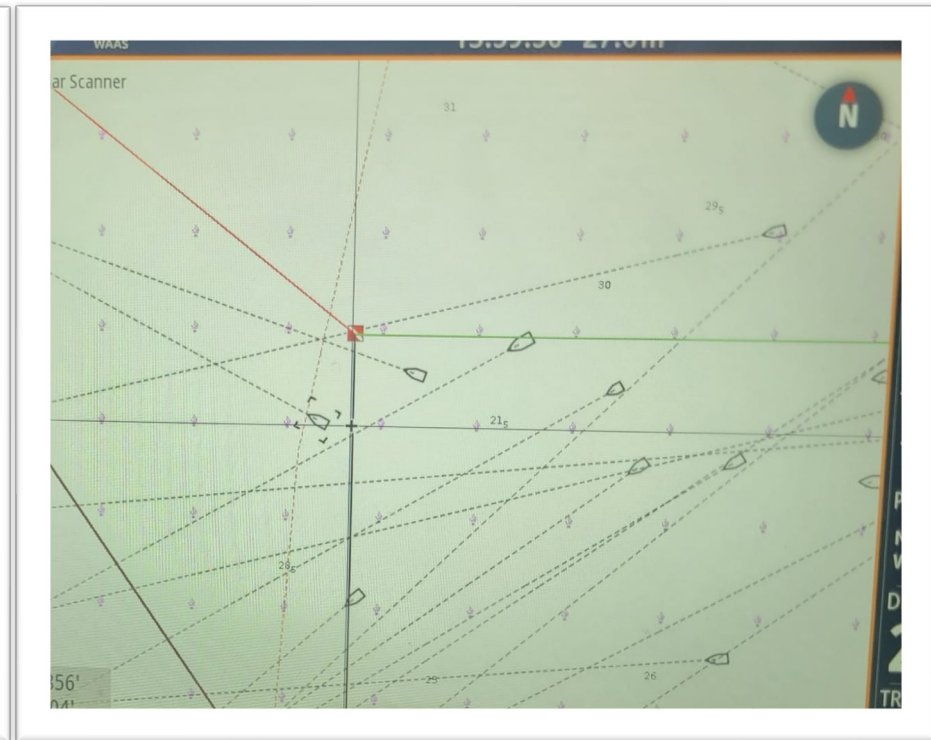
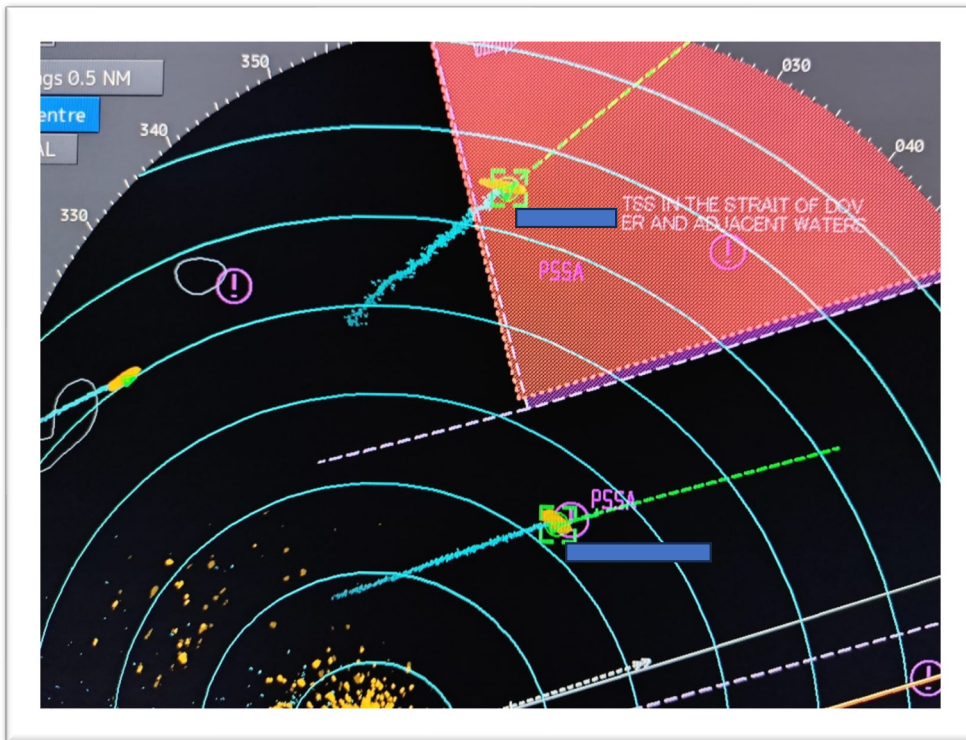
3.3 Declarations

3.3.1 A completed Race Declaration shall be completed on the Gateway as soon as the vessel berths at the Finish Port. Failure to do so will result in the vessel receiving a Standard Time Penalty (see Rule 15.2) or being treated as having failed to complete the course.

3.3.2 Any contravention, however trivial, of any of these Racing Rules, the Sailing and Communication Instructions or any contravention of the COLREGS must be recorded on the Race Declaration.



FAIR PLAY FIRST



Sail Training International

RACE START



Sail Training International

RACE START

STARTING SIGNALS & TIMES TUESDAY 22 JULY

16:00 UTC CLASS A
16:30 UTC CLASS B
16:45 UTC CLASS C/D

- RACE START MAY BE POSTPONED
- PLEASE STBY ON VHF 77

RACE START AREA:

57° 09.0' N
001° 54.0' W



**RACE START VESSEL
MPV MINNA**



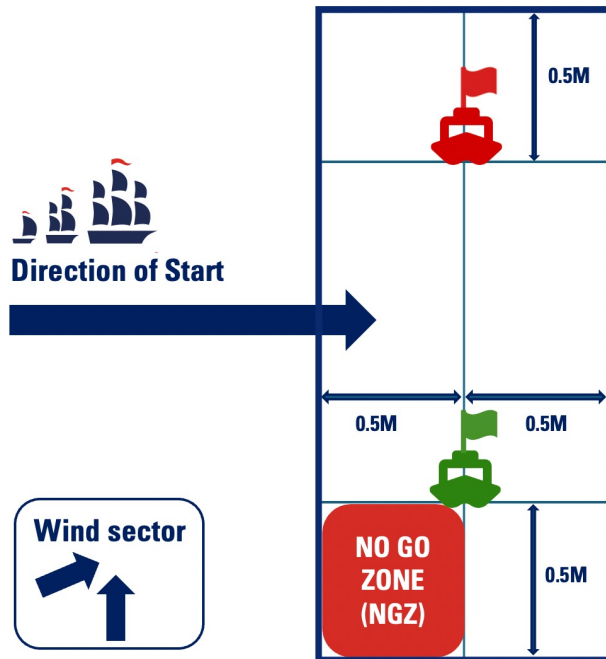
**RACE START VESSEL
VOS GLORY**



Sail Training International

RACE START

Start Line configuration - STARBOARD tack



NO ENTRY
into **START BOX**
until **20 minutes**
before your
Class start

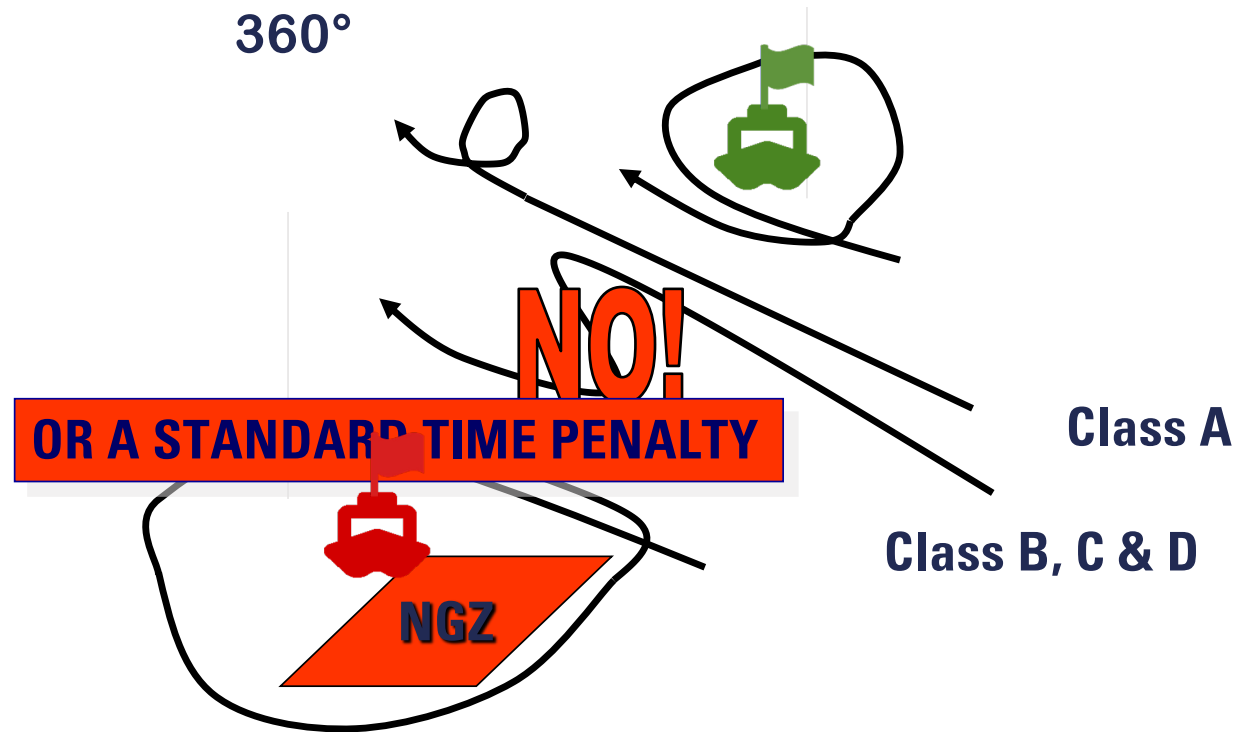
RACE START BASICS:

- Downwind start
- VHF 77
- Don't be early!
- CLASS A – 20 MIN START GATE
- CLASS A – RECORD YOUR INDIVIDUAL START TIME
- **PLEASE STAY AWAY FROM THE START BOX UNTIL 20 MINS BEFORE START SIGNAL FOR THEIR CLASS**
- **ENGINE MUST NOT BE USED LESS THAN 20 MINS BEFORE THE START (UNLESS MORE THAN 1NM FROM THE START LINE)**



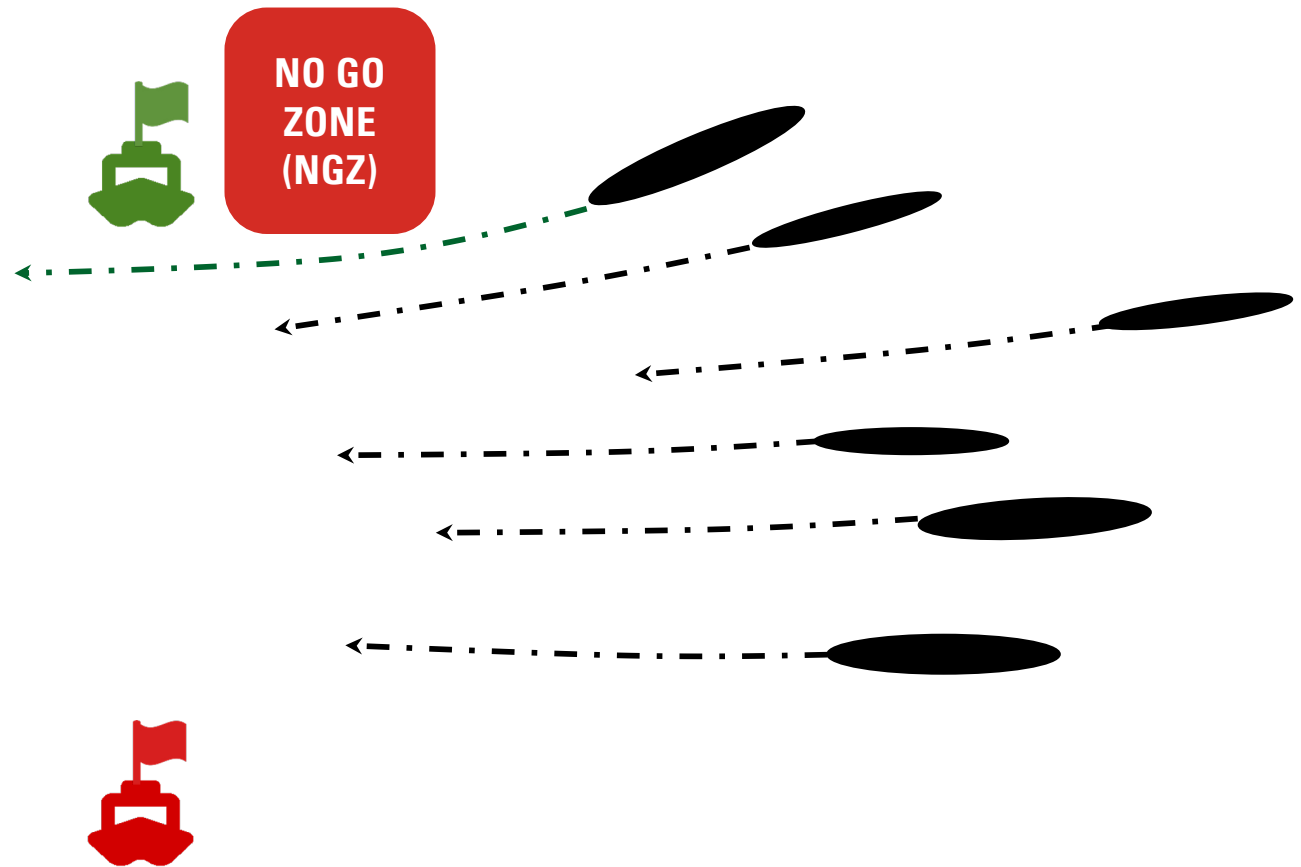
RACE START

Rule 9 – Recalls & Crossing the Start Line early



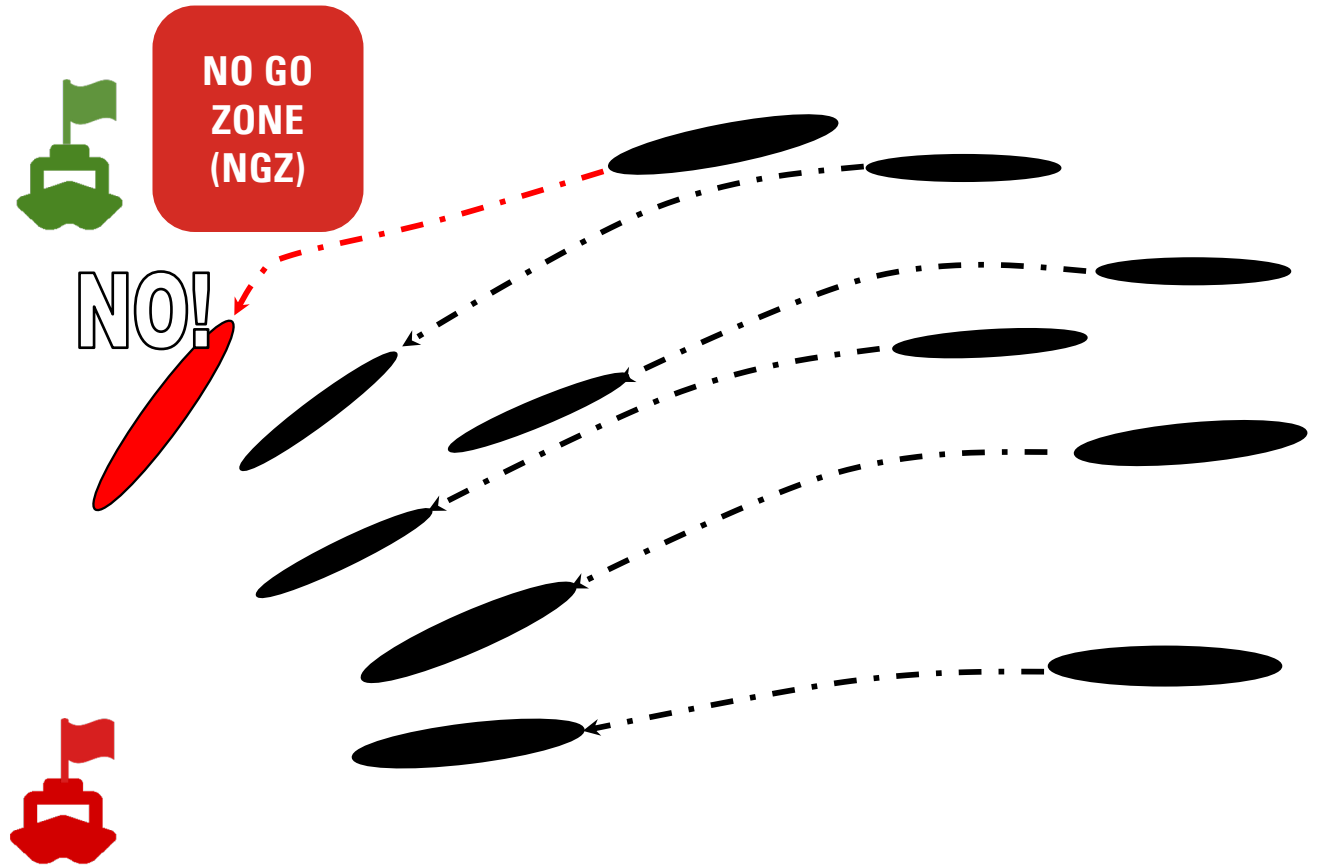
Sail Training International

RACE START



Rule 9 – Recalls & Crossing the Start Line early

RACE START



Rule 9 – Recalls & Crossing the Start Line early

RACE COURSE



Sail Training International

RACE COURSE

RACE 3: ABERDEEN - KRISTIANDSAND

Start Area

57°09.0'N 001°54.0'W

WAYPOINT 1

57°09.0'N 000°40.0'W TO PORT

GATE

Port end 57° 56.5'N 004° 00.0'E

Starboard end 57° 51.5'N 004° 00.0'E

PLEASE RECORD YOUR TIME OF CROSSING THE GATE TO THE NEAREST SECOND.

Finish Line

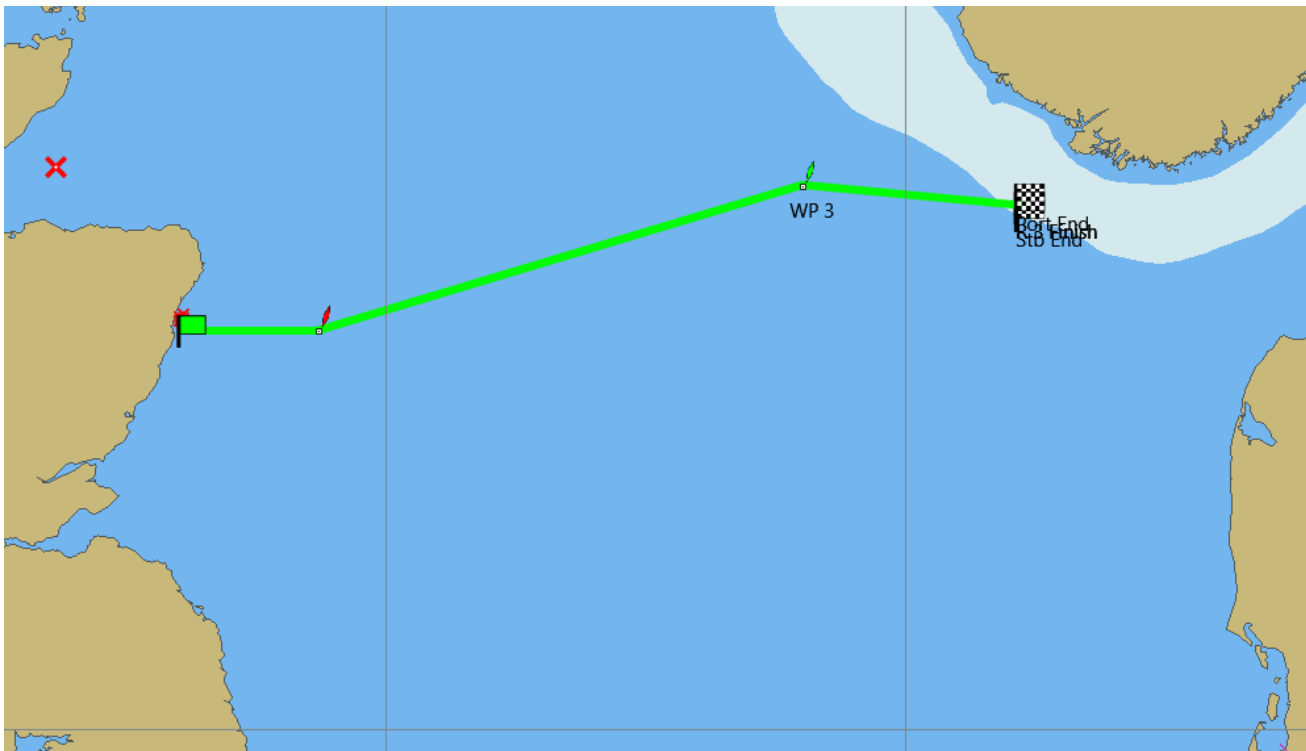
Port end 57° 50.0' N 005° 50.0' E

Starboard end 57° 45.0' N 005° 50.0' E



Sail Training International

RACE COURSE



RACE 3: ABERDEEN - KRISTIANSAND

TIME LIMITS

CLASS A	22:00 UTC 25 JULY
CLASS B	22:30 UTC 25 JULY
CLASS C/D	22:45 UTC 25 JULY

STANDARD TIME PENALTY

2 Hours 37 Minutes



Sail Training International

EXCLUSION ZONES

All Traffic Separation Schemes, Wind Farms, and Oil/Gas Facilities are excluded from the race course and must be treated as NO-GO ZONES.



Sail Training International

RACE COMMUNICATIONS

Mal Riley



Sail Training International

RACE COMMUNICATIONS

Your YB tracker will transmit every 60 minutes.

Additionally within 2nm of the Starting Area, WP1, WP2 and Finish Line YB tracker will transmit every 10 minutes.



HOW TO FOLLOW:

<https://sailtraininginternational.org/yb-tracking-2025/>



Sail Training International

RACE COMMUNICATIONS

COMMS OFFICERS: Malcom RILEY & Lesley SALE

CALL SIGN 'RACE CONTROL'

email: commsofficer1@mailasail.com

Primary Working Frequency VHF CH77

Secondary Working Frequency HF 4146

Race Director (WHATSAPP, TEXT MESSAGE & CALLS, GARMIN, IRIDIUM): + 48 501 025 799

Please make a test today!



Sail Training International

RACE COMMUNICATIONS

2 Schedules per day

TEST VHF communications 0758 and 1658 UTC

Sat communications 0800 and 1700 UTC

VHF communications 0815 and 1715 UTC

HF 4146 communications 0915 and 1815 UTC

First Comms Schedule 0815 UTC 23 July (Wednesday)



Sail Training International

RACE COMMUNICATIONS

The communications officer will call each vessel as listed in the schedule.

Pass your Lat and Long when called: e.g: 55 27 N 08 26 W/E (just degrees & minutes)

The communications officer will pass back your race placings (Class and Overall)

Any relevant weather information will be broadcast at the end of the schedule , along with any other race related information.

Please maintain **Radio Silence** during the schedules.



Sail Training International

RACE COMMUNICATIONS

COMMS VESSEL – DAR MŁODZIEŻY

STBY COMMS VESSEL – EENDRACHT

Any vessel not able to contact 'Race Control' by Radio can use any of the alternative methods:

- SMS to Race Director: +48 501 025 799
- Relay through another vessel (competing or commercial)
- Any other method



Sail Training International

RACE COMMUNICATIONS

FINISHING THE RACE:

Pass your Finish Time **(to the nearest second)**, future intentions, retirements and ETA for KRISTIANSAND to RACE CONTROL

Remain on communications schedule until stood down by RACE CONTROL

THIS INCLUDES VESSELS THAT HAVE RETIRED AND VESSELS THAT HAVE FINISHED



Sail Training International

RACE COMMUNICATIONS

FINISHING AT SEA:

The Race Committee monitors the fleet's progress and, if the fleet is expected to be late, the RACE TIME LIMIT will be changed or the COURSE will be shortened.

The details to be broadcasted by RACE CONTROL.

At the new TIME LIMIT for your class, note your position and report it to RACE CONTROL. When crossing the GATE please record your time to the nearest second.

Please do not retire!



Sail Training International

RACE COMMUNICATIONS

NO REPORTS!

If ONE Report Missed

- *Noted and STP may be awarded*

If TWO Reports Missed

- *Concerned and another STP may be awarded*

If THREE Reports Missed

- *another STP may be awarded and may be DSQ*

MRCC may be informed and SAR considered



Sail Training International

MET REPORT

Penny Tranter



Sail Training International

FORECAST OVERVIEW at 15:00 BST - MONDAY

WEATHER PATTERN: Very complex over N Sea during Tuesday, Wednesday and Thursday, due to small-scale low-pressure areas, slow moving fronts and temporary troughs – low forecast certainty and expect wind changes. Atlantic type sets in end of week and through weekend.

WATCHPOINTS:

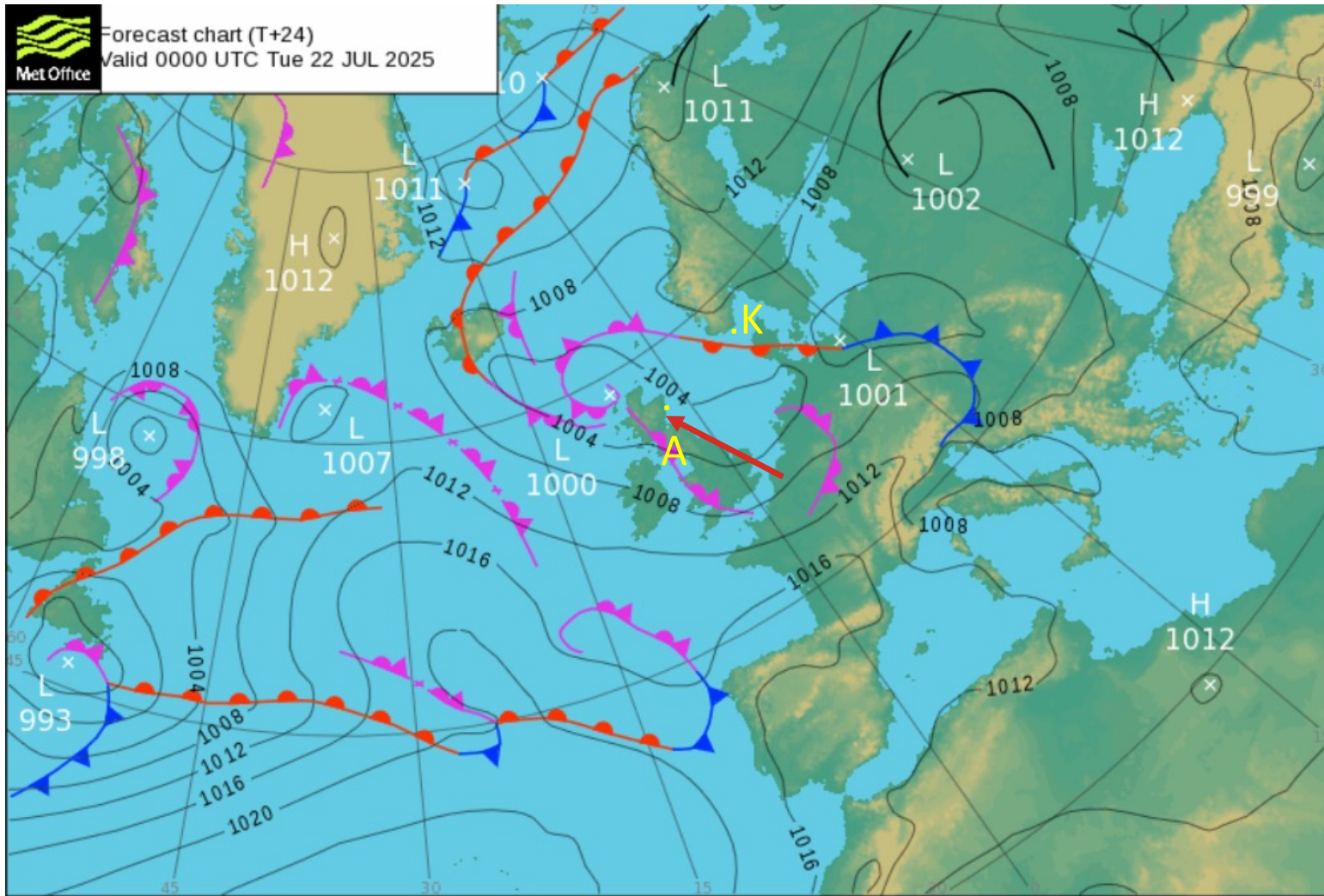
- START: Potential light and variable winds, but light N/NW setting in through Tuesday evening
- WINDS:
 - During Wednesday strong N/NW winds building, peak gusts 25-35kt in places, over western and central N Sea and through Wednesday night, decreasing Thursday afternoon
 - Through Thursday, Friday, Saturday off S/SE Norway – strong/gale force SW/W/NW, gusts potentially 35-40kt, possibly a little higher on Friday/Saturday – with 2.0-2.5m seas
- WEATHER: Some showers around too, and local mist/fog patches through to late Thursday
- VISIBILITY: Mainly good, but possibly moderate in showers/mist, poor in any fog



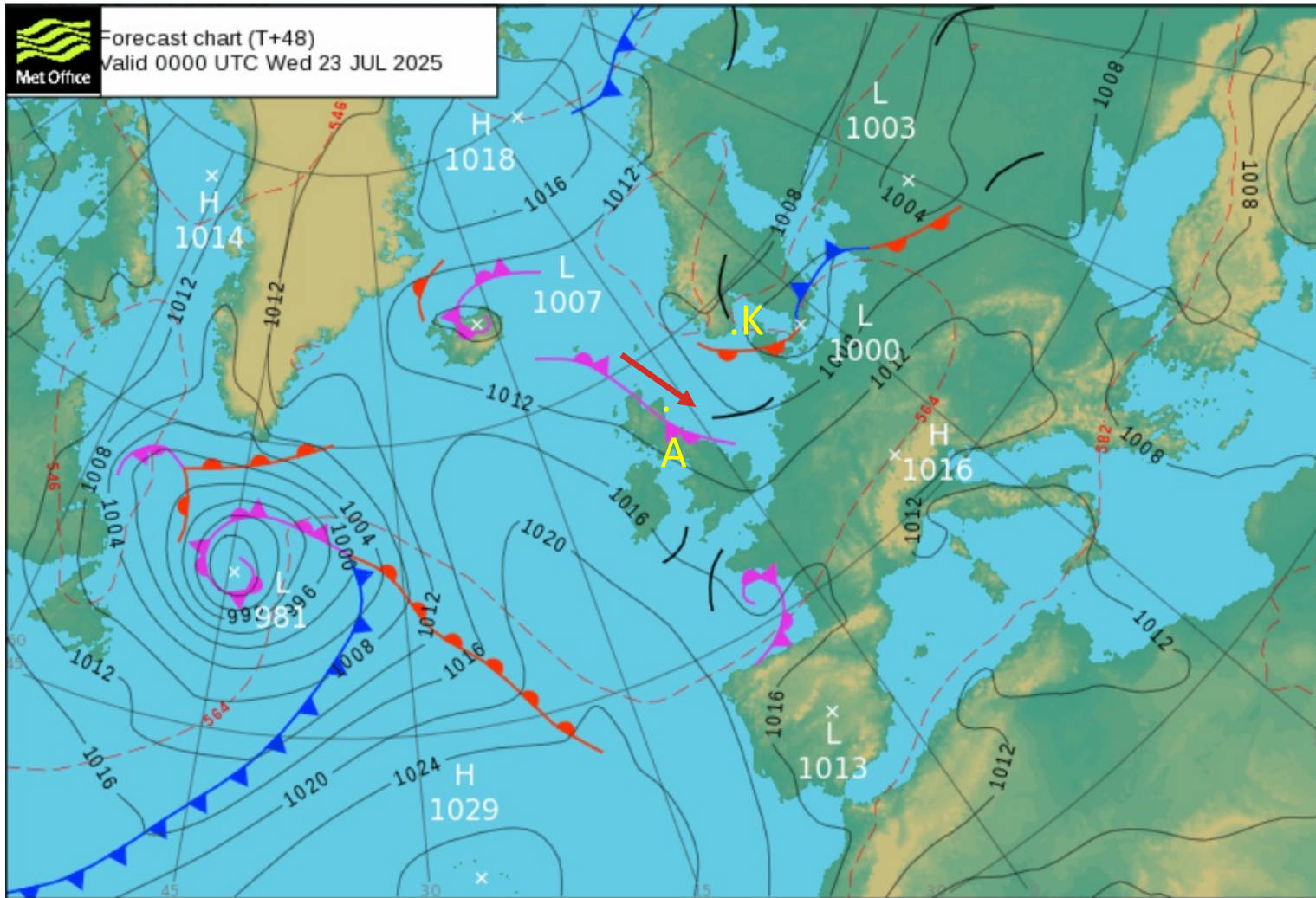


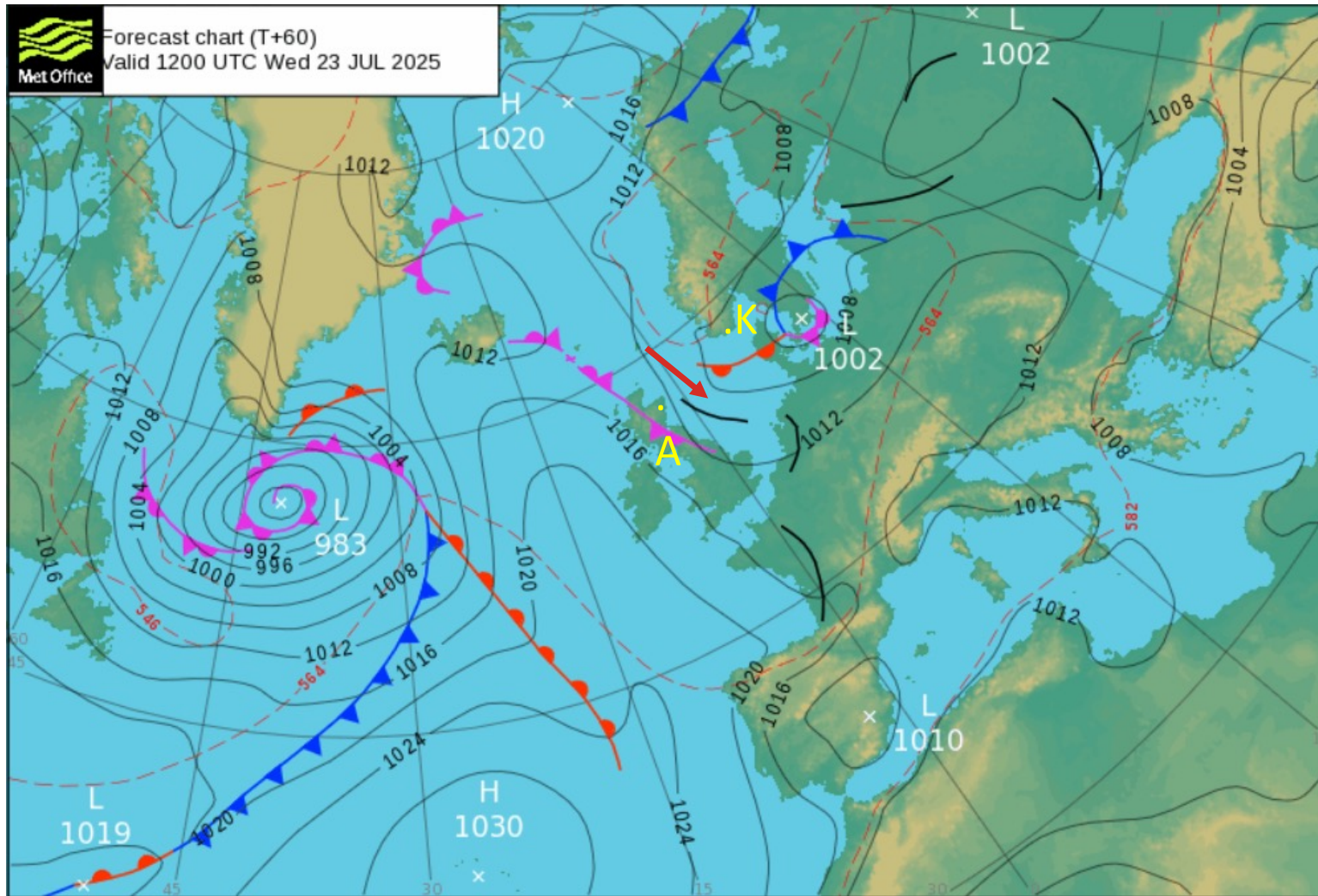


Forecast chart (T+24)
Valid 0000 UTC Tue 22 JUL 2025

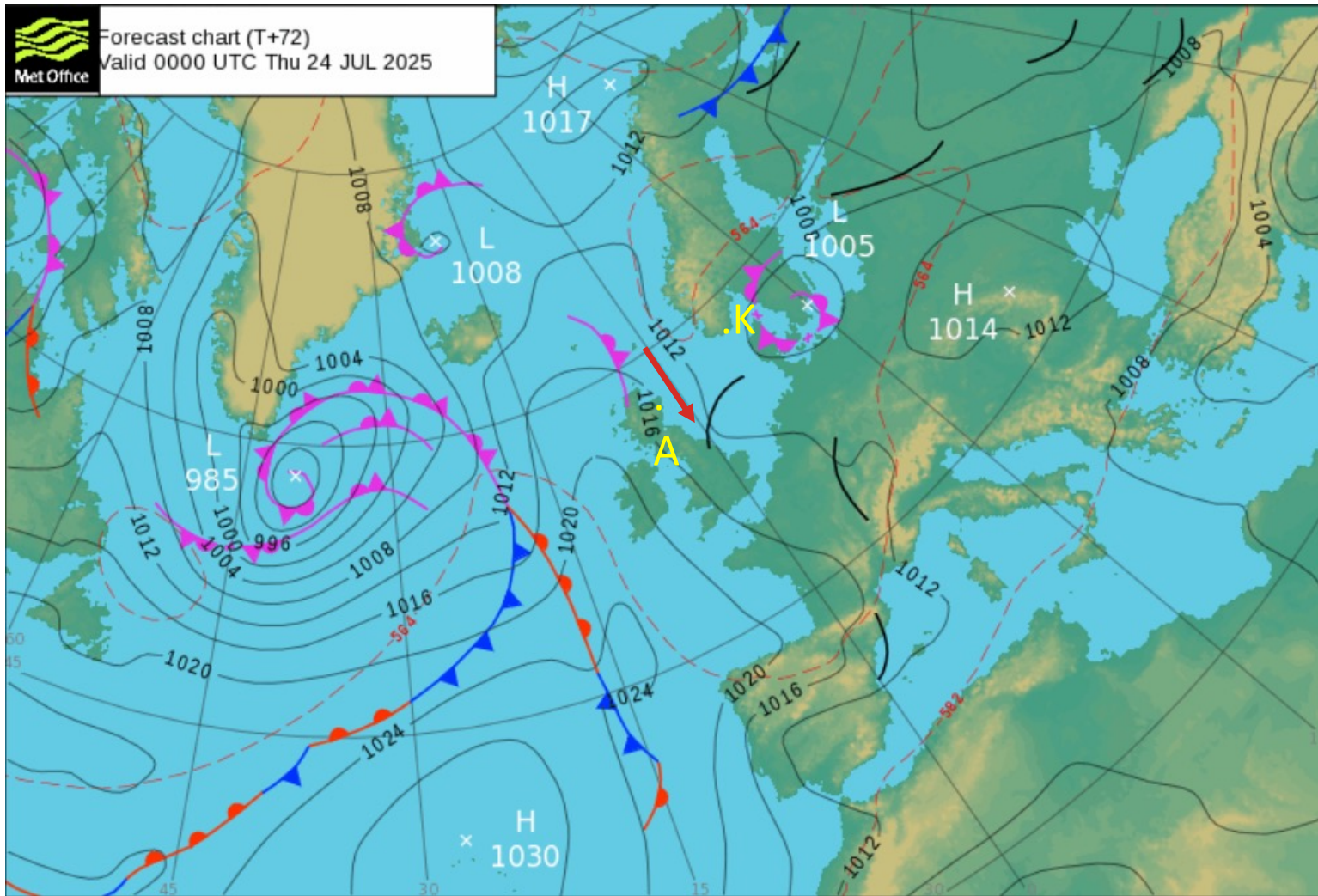


Sail Training International





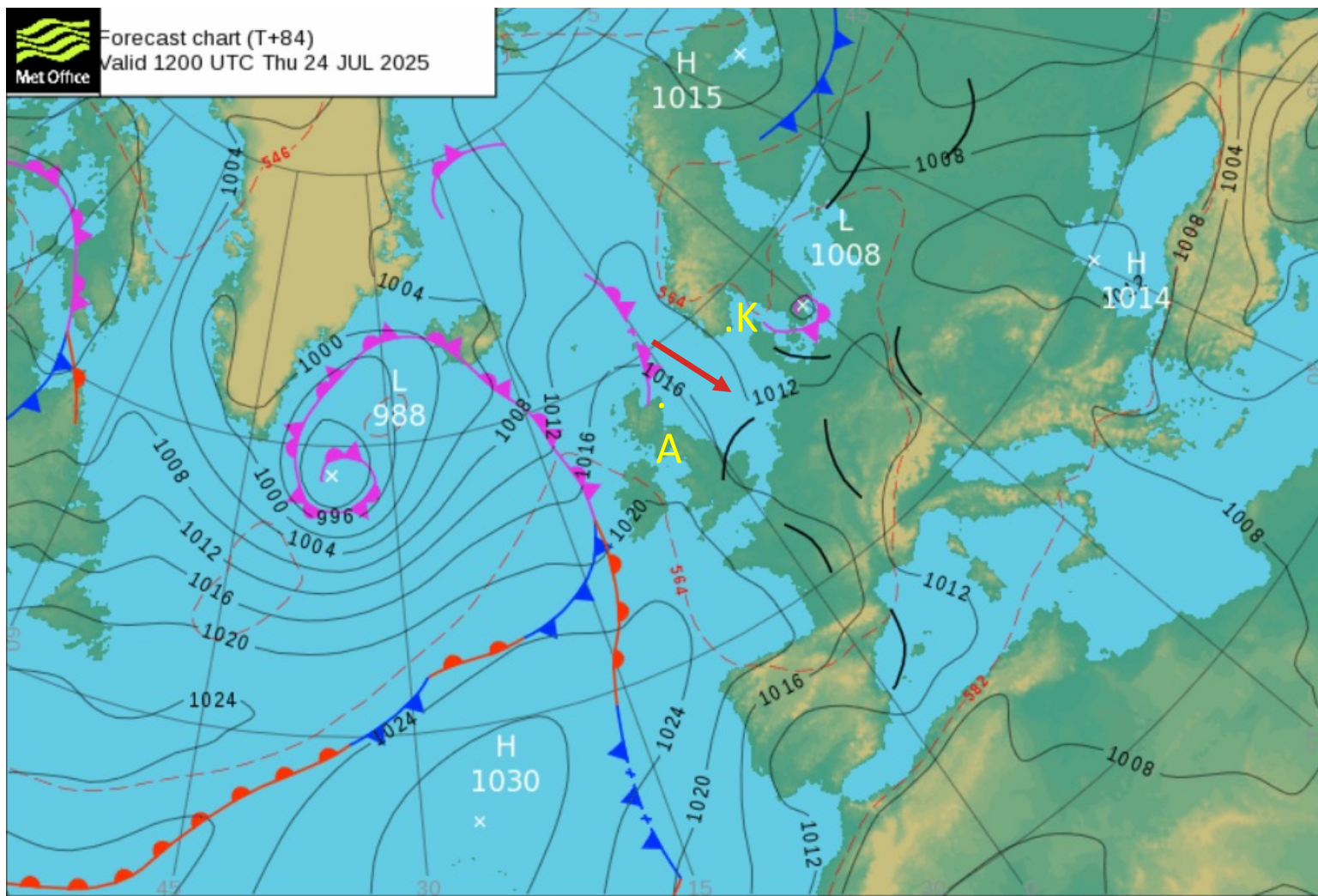
Sail Training International



Sail Training International



Forecast chart (T+84)
Valid 1200 UTC Thu 24 JUL 2025



Sail Training International

START



Sail Training International

START

- WINDS: Expected to change between 1600 and 2000 from a light SW/S/SE 3-6kt to a light W/NW/N, due to a small low-pressure area and trough
- SEA STATE: Waves 0.0-0.3m 1-3sec, Swell N 0.3-0.4m, 4sec
- WEATHER: Some bright/sunny spells, but some cloudy skies too with some showers around
- VISIBILITY: Mainly good, but could dip down to moderate in showers



In local
time
BST
UTC +1
hour
(close
to
neaps)



TIDES

In local
time

BST

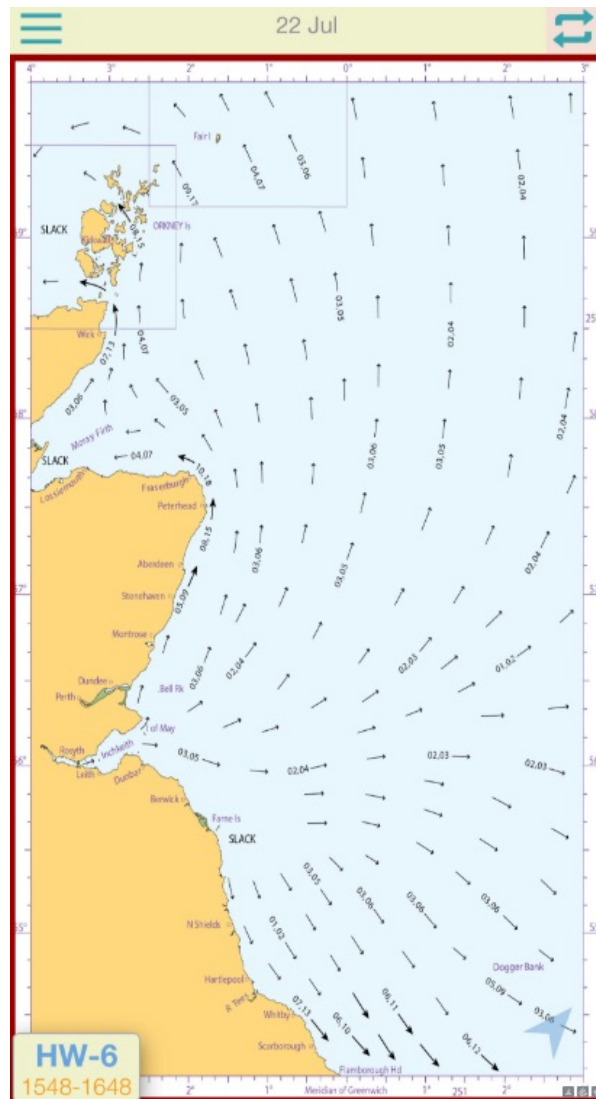
UTC +1

hour

(close

to

neaps)



Sail Training International

TIDES

In local
time

BST

UTC +1

hour

(close

to

neaps)



TIDES

In local
time

BST

UTC +1

hour

(close

to

neaps)



Sail Training International

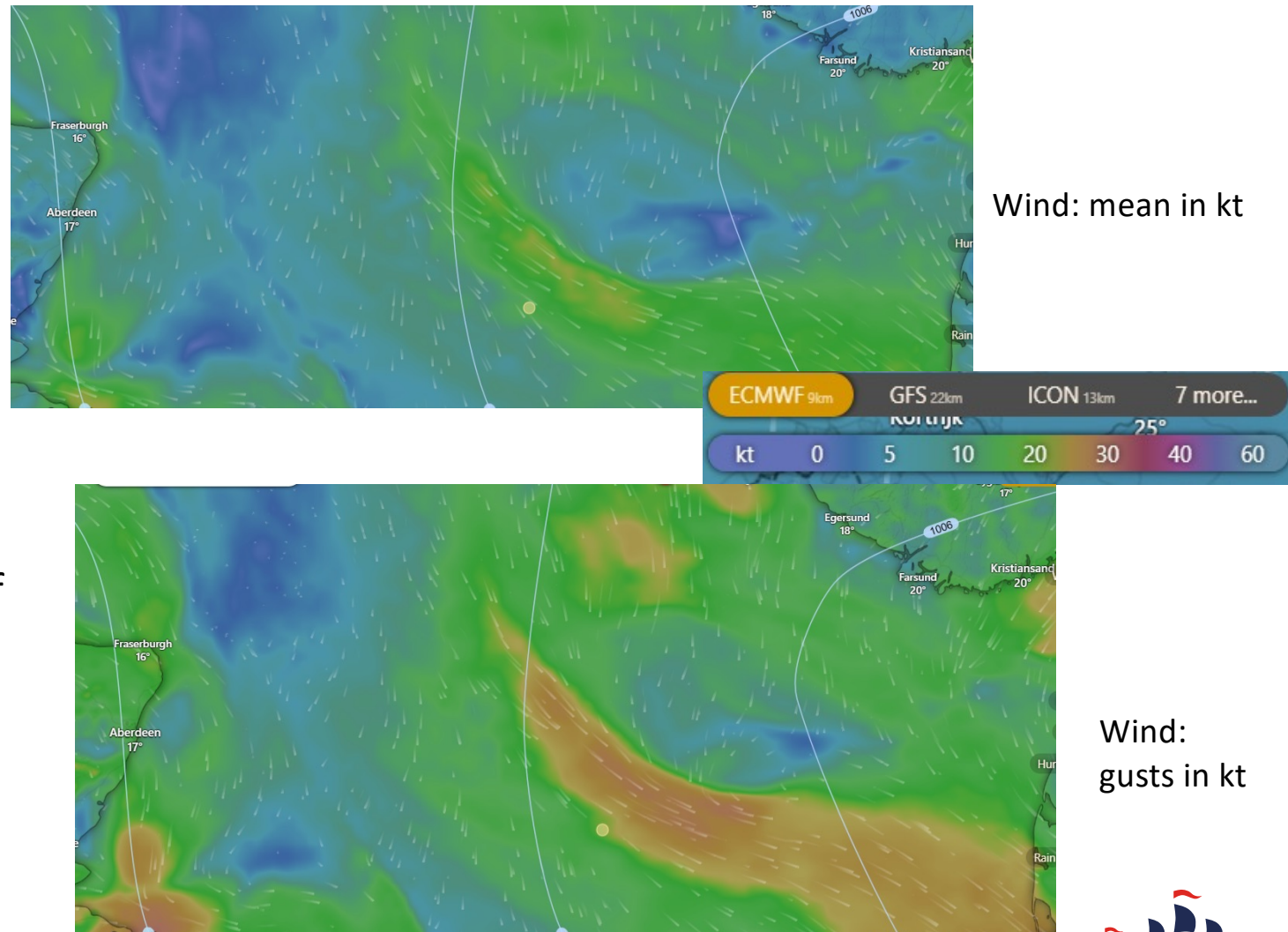
WEDNESDAY 00:01 UTC
(ECMWF)

Winds: N/NW 7-20kt, gusts 11-25kt

Wind waves: 0.2/0.3m, 2-4sec
Swell: 0.2-0.4m var, 3-4sec

Weather: Mainly fair, but risk of shower/s, mist and fog patches

Dew point: 15-17C SST: 16-18C



SST = Sea Surface Temperature

WEDNESDAY 12:00 UTC (ECMWF)

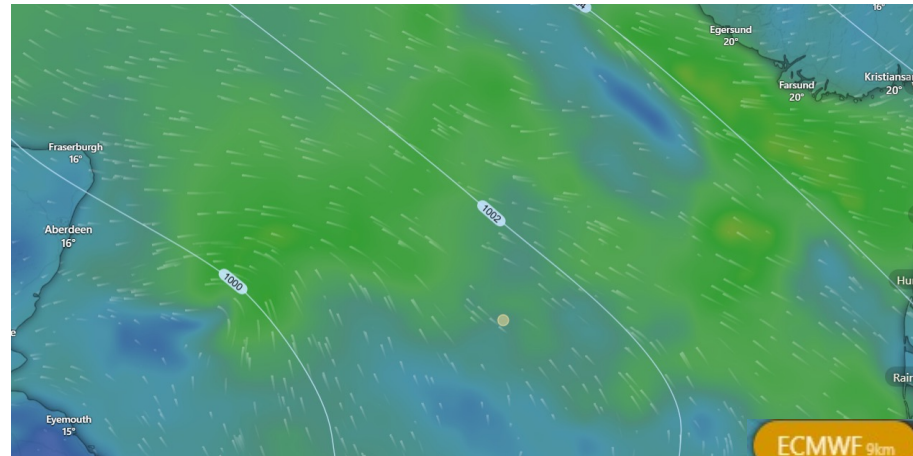
Winds: N/NW 10-18kt, gusts 15-25kt, N/NE/E in east 5-12kt, gusts 10-25kt

Wind waves: 0.4/1.0m, 1-4sec

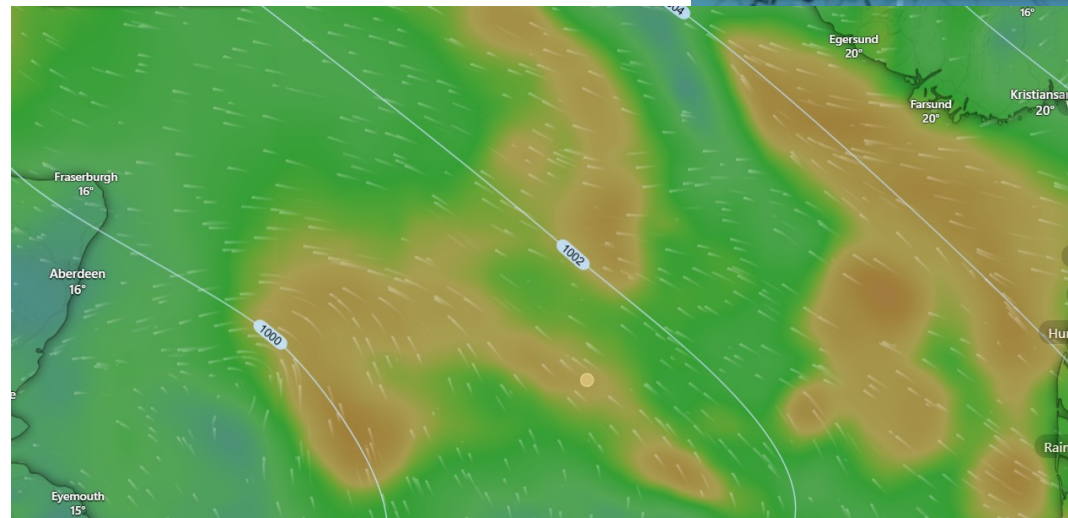
Swell: 0.2-0.7m var, 3-4sec

Weather: Mainly fair, but risk of shower/s, mist and fog patches

Dew point: 14-17C SST: 16-18C



Wind: mean in kt



Wind:
gusts in kt



Sail Training International

SST = Sea Surface Temperature

THURSDAY 00:01 UTC (ECMWF)

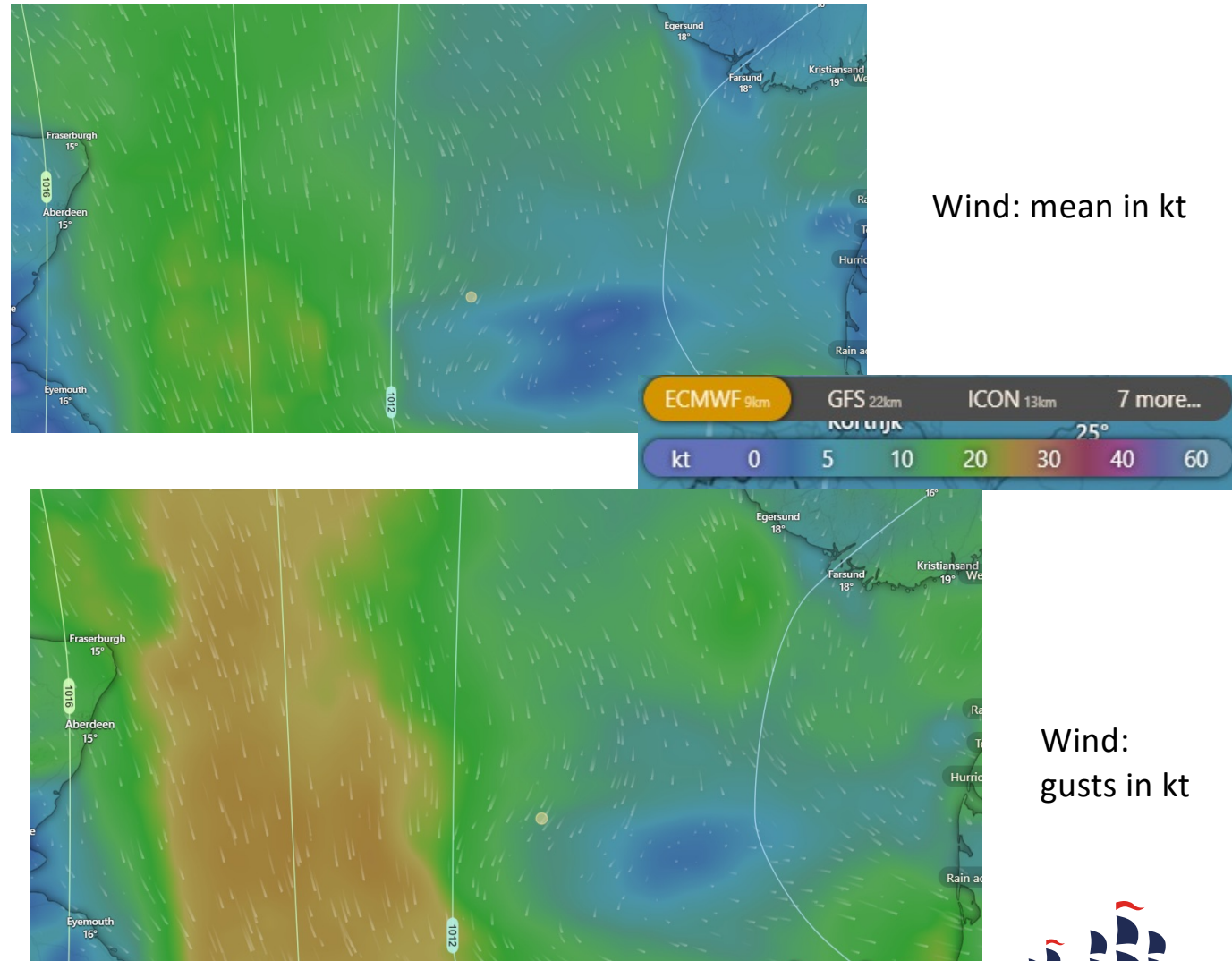
Winds: N/NW 7-17kt, gusts 10-25kt – strongest in west and central areas

Wind waves: 0.6/1.3m, 2-5sec

Swell: 0.4-0.9m var, 3-4sec

Weather: Mainly fair, but risk of shower/s, mist and fog patches

Dew point: 14-17C SST: 16-18C



SST = Sea Surface Temperature

THURSDAY 12:00 UTC (ECMWF)

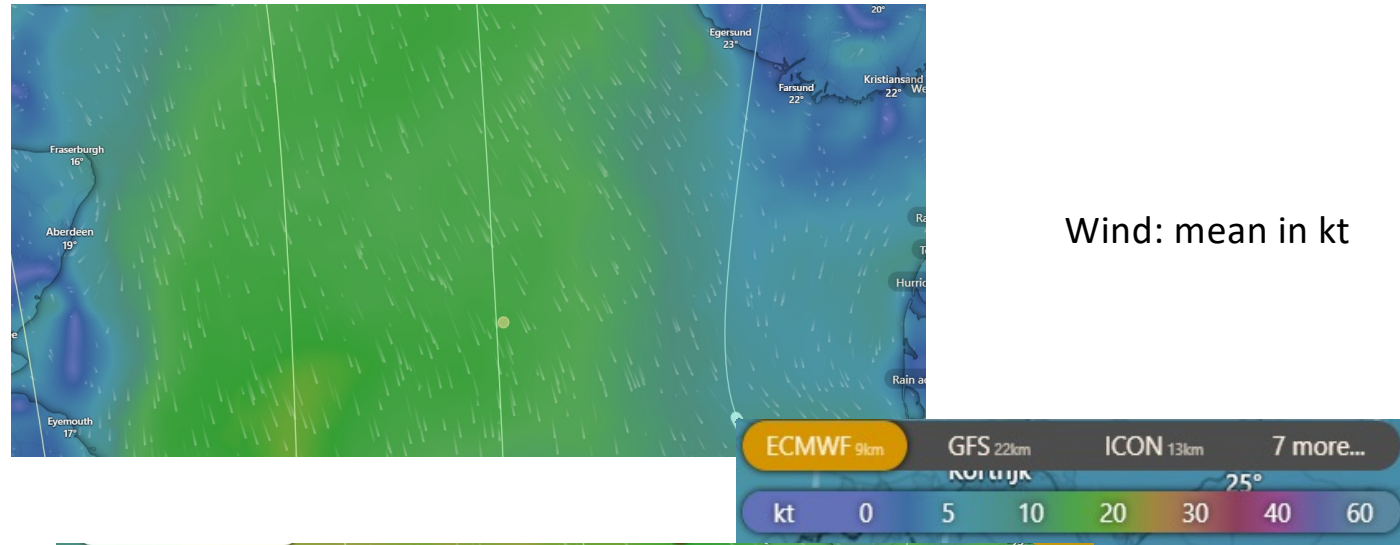
Winds: N/NW 12-18kt, gusts 15-25kt – strongest in west and central areas

Wind waves: 0.6/1.3m, 2-5sec

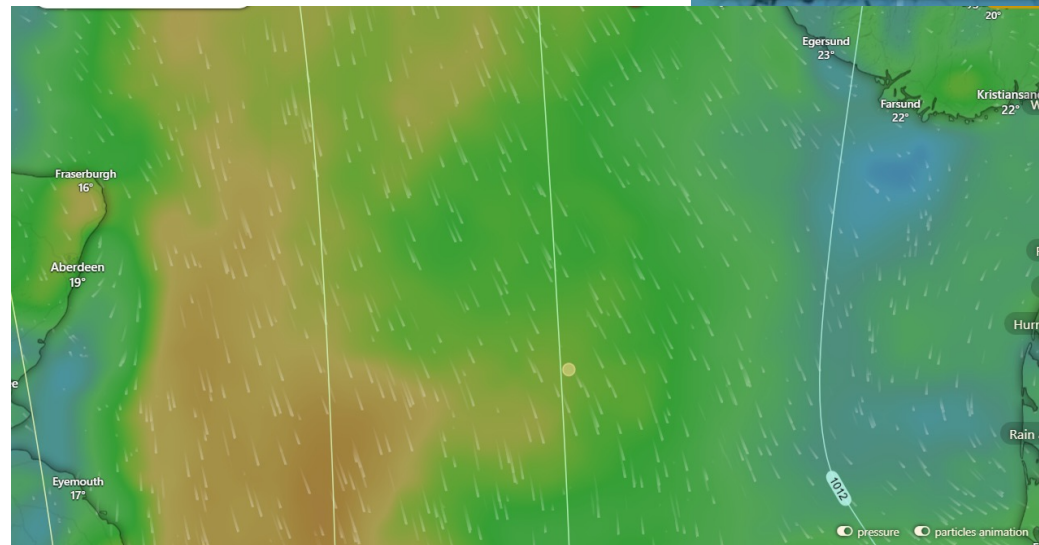
Swell: 0.8-1.0m var, 3-4sec

Weather: Mainly fair, but risk of shower/s, mist and fog patches

Dew point: 14-17C SST: 16-18C



Wind: mean in kt



Wind:
gusts in kt

SST = Sea Surface Temperature



Sail Training International

THANK YOU



Sail Training International

ARRIVAL TO KRISTIANSAND & C-IN-C



Sail Training International

**30. JULI –
2. AUGUST 2025**



**HELLO
SAILOR!**





Kristiansand

Together we create a:
Fantastic, inclusive and free
people's festival in Southern
Norway

Sustainability is central and
we want to connect as many
ships as possible to shore
power.

tallshipsraceskristiansand.no



HELLO
SAILOR!





tallshipsraceskristiansand.no

2. Arrival Information

2.1 Norwegian Chart Series

Coastal Map Series no. 305

Area Chart Series no. 9

Harbor Chart Series no. 459 for Kristiansand
ENC

Additional Harbor charts for the region:
Harbor Chart Series no. 477 for Farsund
Harbor Chart Series no. 457 For Mandal
Harbor Chart Series no. 453 For Arendal
ENC

Tide times

No significant tides. The tide varies between + 0,57 meters and + 0,32 meters.

British Admiralty Charts

BA 1402 Skagerrak

BA 2182 C North Sea Southern Sheet

BA 2182 B North Sea Central Sheet

BA 3516 Approaches to Kristiansand

ENC

Norwegian Chart series

Print on Demand (PoD) is available from several suppliers approved by the Norwegian Chart Administration. From the below link you can locate your supplier.

<https://www.kartverket.no/en/pages/where-to-order-maps>



HELLO
SAILOR!





2.2 Reporting Procedures



Attention!

The following procedure is mandatory for vessels arriving in Norway.

SafeSeaNet Norway

Safe Sea Net reporting is the national reporting system where vessels send arrival and departure information to the Norwegian authorities and ports. All vessels must register and fill in the required documentation.

SafeSeaNet Norway Web Client can be accessed through the URL <https://www.shipprep.no>

Support is authorized to define and update ships and ports. All times in the web client are in the current local time zone in Norway. This is CET (UTC+01:00) during the winter, and CEST (UTC+02:00) when observing daylight saving time.

The log in screen (Figure 1) will give access to all relevant background information and the latest relevant news.

A user manual for ships can be found on the below link:
<https://shipprep.no/ShipRepWebUI/Documents.aspx>

Are you having problems with SafeSeaNet?

Please contact SafeSeaNet support, which is available 24 hours a day, all year round.

Telephone: +47 35 57 26 25

Email: support.ssnn@kystverket.no

SafeSeaNet Norway

KYSTVERKET
NORWEGIAN COASTAL ADMINISTRATION

Username

Password

LOGIN

[Forgot password?](#) [Register here](#)

The availability of SafeSeaNet Norway may be irregular every Wednesday 13:00-17:00 local time, due to maintenance work in our network and on our computers.

Important information

In order for us to reach out to users with important information on changes in SafeSeaNet Norway, we now offer two newsletters, to which you can subscribe. If this is of interest to you and your organisation, it is important that you subscribe. Such information will under normal circumstances not be conveyed through other channels.

[Receive information on changes in our web services](#)
[Receive information on changes in the user interface](#)

Figure 1



2.3 Pilots

Vessel must book pilot through the SafeSeaNet system, minimum 24 hours in advance.

Changes to the start time of 2 hours or more must be made as soon as possible and on an ongoing basis.

Final confirmation of the start time must be given no later than 2 hours before the expected start time.

If circumstances occur that the vessel could not have foreseen, the booking deadline in the first paragraph may be waived. Such circumstances must be documented in writing.

For vessels below 70 m in length and 20 m width, Pilot is exempt.

2.4 Tugs

Tugs will be in attendance in the port of Kristiansand. Their services are free of charge for participants in the Tall Ships Races. Several tugs are available and will escort the vessels to their assigned berth.

2.5 Agency Services

The Agencies for Tall Ship Races in Kristiansand



Pentagon Marine AS
T: +47 47 20 20 10
M: +47 91 38 11 43
E: agency.norway@pentagonfreight.com
A: Mjaavannsvegen 154,
4628 Kristiansand, Norway

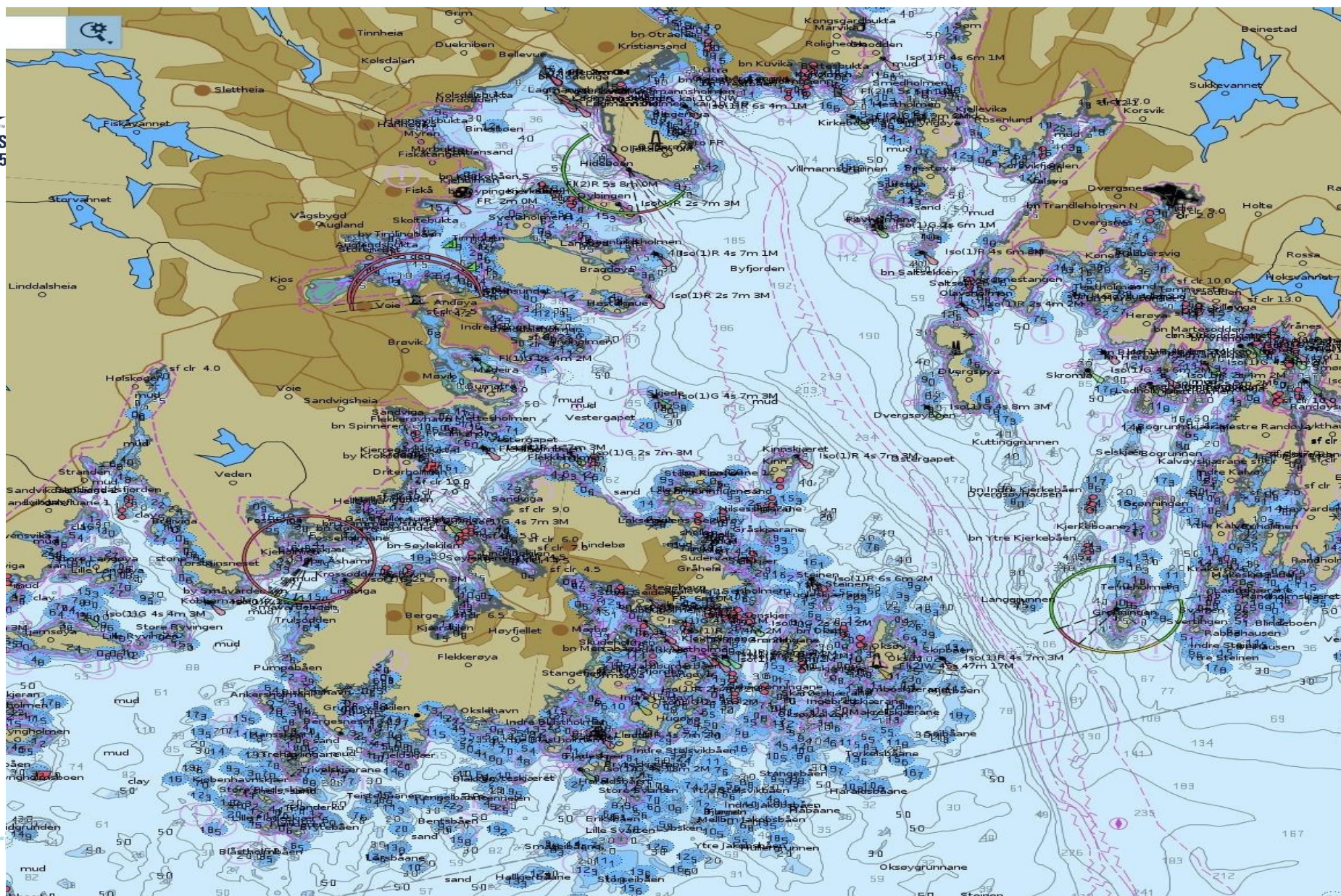
For more information about Pentagon's services, locations, shipment tracking, or market updates, please visit their website www.pentagonfreight.com

tallshipsraceskristiansand.no



HELLO
SAILOR!







2.6 Arrival reporting

All participants should be berthed by 12.00 a.m. on Wednesday 30 July.

Any earlier arrival must be approved by the port in advance.



We kindly ask all vessels to report minimum 2 hours before arrival to Port of Kristiansand.

Main approach

Reporting on passing between Oksøy/Grønningen Lighthouses.

Report to Port of Kristiansand VHF Ch. 12.

Western approach

Reporting on passing into Vestergapet.

Report to Port of Kristiansand VHF Ch. 12.

Entering inner port area

Reporting on passing Dybingen island.

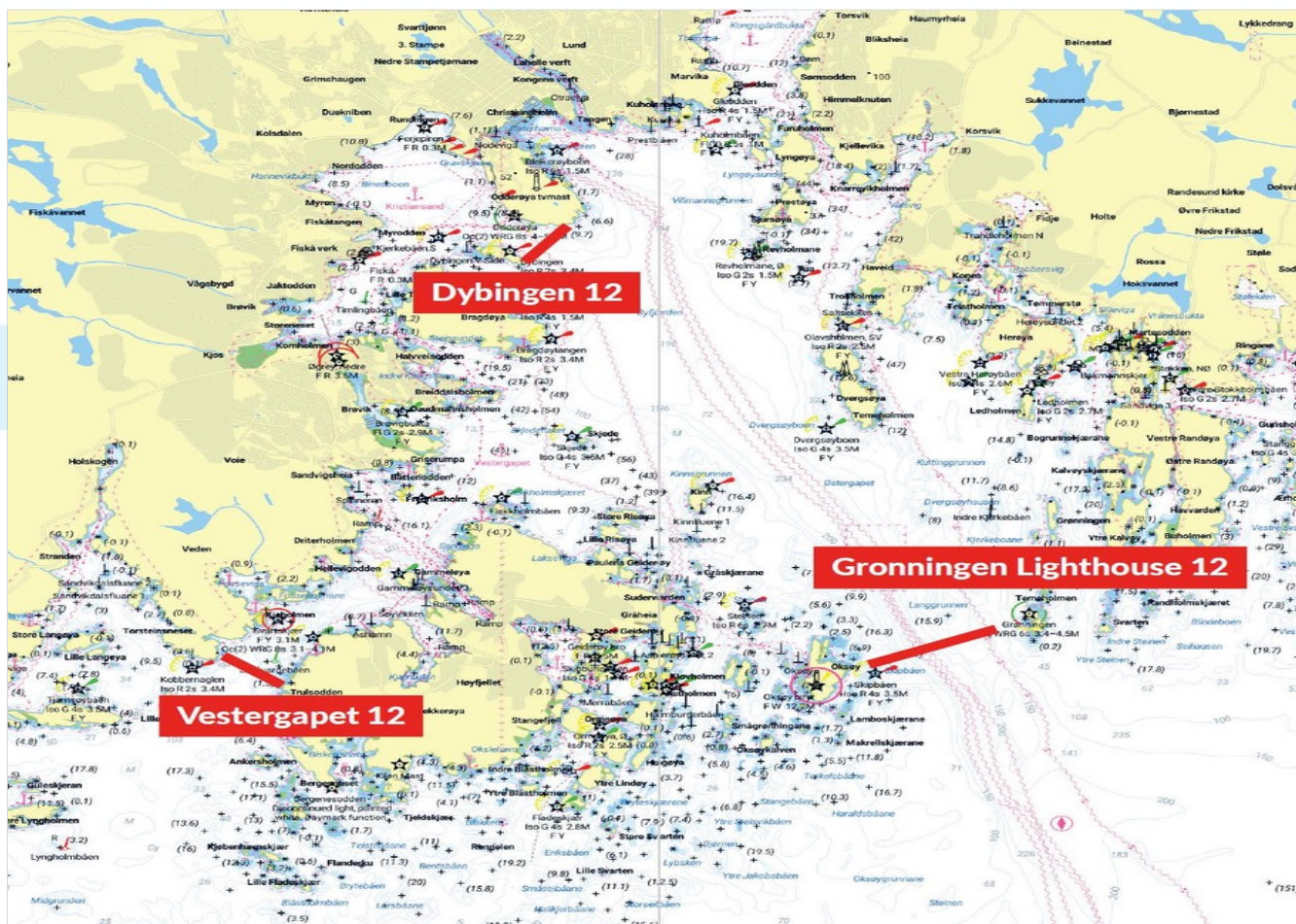
Report to Port of Kristiansand VHF Ch. 12.

See chart under for details

During the berthing process ships may be asked to hold on Byfjorden (city fjord).

Station/ Operation	Channel	Call sign
Port of Kristiansand	VHF 12	Port of Kristiansand
Tugs	VHF 67	Bjornen/Bram
Push/Follow me boats	VHF 68	Push boat 1, 2, 3, 4.

tallsnipsraceskristiansand.no



HELLO
SAILOR!






- | | | | | |
|-----------------------------|---------------------|--------------------|----------------------|---------------|
| 1 A.R.A Libertad | 8 Fullriggeren | 15 Shtandart | 23 Excelsior | 31 Ryvingen |
| 2 Alexander Von Humboldt II | Sørlandet | 16 Thalassa | 24 Fulton | 32 Skonnerten |
| 3 Capitan Miranda | 9 Gulden Leeuw | 17 Wylde Swan | 25 Jens Krogh | Jylland |
| 4 Christian Radich | 10 Kapitan Głowacki | 18 Atlantica | 26 Jolie Brise | 33 Swan |
| 5 Dar Młodzieży | 11 Loa | 19 Betty | 27 Kapitan Borchardt | 34 Valborg |
| 6 Eendracht | 12 Morgenster | 20 Boy Leslie | 28 Milpat | 35 James Cook |
| 7 Fryderyk Chopin | 13 Pogoria | 21 Christiania | 29 Pascual Flores | |
| | 14 Shabab Oman II | 22 Den Store Bjørn | 30 Rupel | 37 Hestmanden |









THE TALL SHIPS RACES
Kristiansand 2025
organized by sail training international





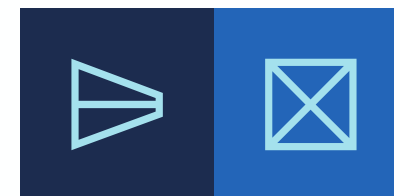



Cruise-in-Company

30 JULY- 2 AUGUST 2025

Information about guest harbours and technical information

Harbour	Class quay capacity (pending availability)				Safe/inside harbour anchorage (all Classes)	Berthing depth (m)	Pilot available	Tug available
	A	B	C	D				
Sirevåg	●	●	●	●	●	4-9m	Book	Book
Farsund	●	●	●	●	●	6m	Book	Book
Båly	●	●	●	●	●	7m	Book	Book
Kristiansand	-	●	●	●	●	5m	Book	Book
Arendal	●	●	●	●	●	8m	Book	Book





Sirevåg harbour

Every summer the idyllic harbour in Sirevåg is a popular destination for sailors and boaters.

Sirevåg has a very large jetty/breakwater protecting its harbour (Europe's second largest man-made jetty) which makes it a safe and good place to dock. It's closest neighbour to the north is Jærstrendene, with beautiful open-air beaches and wide horizons. During World War II, the German occupiers built a fortress on Vedafjellet, just south of Sirevåg, as part of "Festung Norwegen". Viewpoints and caves in the mountains are still intact and are visited by a large number of tourists each year.

GENERAL FACILITIES

- Supply of water and electricity
- Toilets & showers
- Free WiFi
- Small grocery store and bakery close to the harbour.
- Fish & sea food shop & cafe.
- Cafés, bar, hotel
- Sirevåg train station close to the harbour
- Stavanger airport 60 km from the harbour

SPORTS FACILITIES

- Nice sandy beach/swimming area
- Hike in nature

ACTIVITIES & PLACES OF INTEREST

- 26 July: Local market opens
- 26 July: Tall Ships Races Cruise-in-Company festival in our beautiful harbour
- 26 July: Crew Party in the afternoon and evening
- German Coastal fortress from World War II with viewpoints and caves



For more information,
please scan the QR Code

DISTANCES IN NAUTICAL MILES

From Aberdeen to Sirevåg: 258 nm
From Sirevåg to Kristiansand: 94 nm



Farsund harbour

Welcome to one of Norway's southernmost harbours!

Some 11,000 years ago, as the glacier retreated along the coast, migrating people gradually settled in the area. Where the busy port of today is located, archeologists have unearthed amazing artefacts from beyond the ocean, showing the importance of this trading post and its harbour through the ages.

Close to the fjord where today's port is located, you will find many reminders of the Vikings, such as Viking graves and even an estate of a local Viking king. The estate was changed into a monastery as Christianity was brought to Norway and is now in private hands.

Today, the Farsund Port is ranked as the world's largest seismic port. One of the earliest trading posts in Norway has certainly developed up through history!

GENERAL FACILITIES

- Cafés and restaurants
- Supermarkets
- Clothing shops
- Toilets and showers
- Fresh water

ACTIVITIES & PLACES OF INTEREST

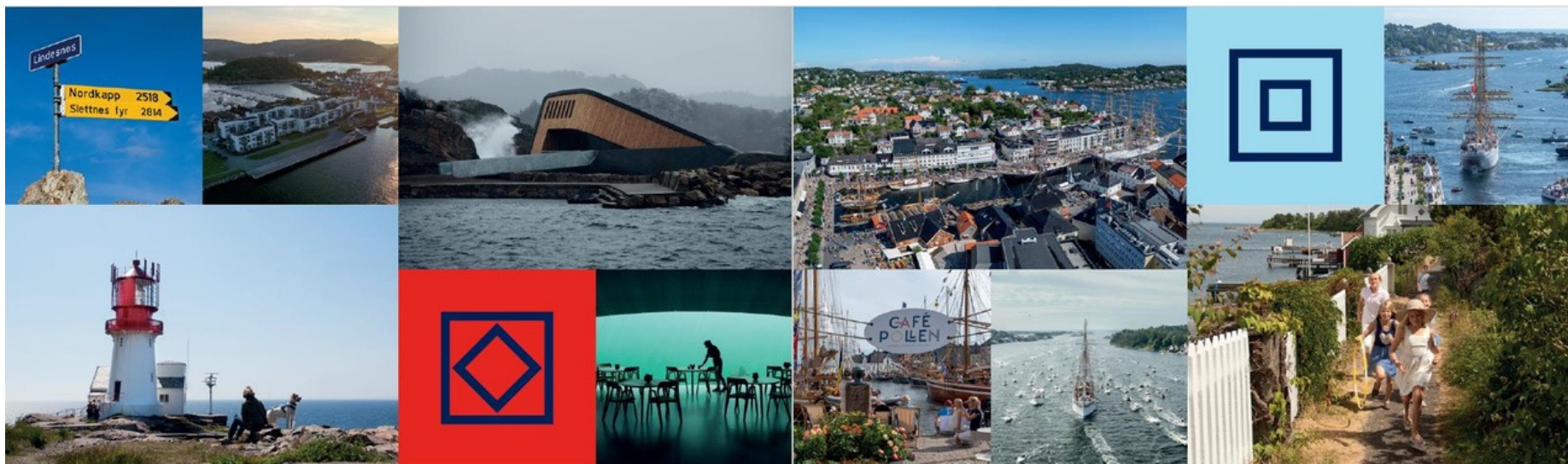
- The about 3000-year-old rock carvings at Penne, Lista
- The many Viking graves on Lista
- Once a privateers' nest, today the idyllic outpost Loshavn
- The Lista Lighthouse at Borhaug, once the world's biggest lighthouse park. Built on top of a grave mound, Gunnar's haug
- The WWII Museum Hangar 45, at Lista Airport from WWII
- The hidden cannons at WWII Varnes Fortress, Lista
- The WWII Nordberg Fortress, preserved in its original form
- Walking tour in the town with the only historic watchman in Norway, focusing on Farsund's history from the Gunboat War



For more information,
please scan the QR Code

DISTANCES IN NAUTICAL MILES

From Aberdeen to Farsund: 294 nm
From Farsund to Kristiansand: 52 nm



Båly harbour

Lindesnes in Adger is located on the southernmost point of Norway. A beautiful archipelago protects the port from sea swell.

Båly is part of Lindesnes municipality and is the closest settlement to the popular tourist attraction of Lindesnes Lighthouse with its visitor centre.

Båly is a vibrant fishing village with several restaurants including the worldfamous underwater restaurant "Under".

The man-made, 930-metre-long canal Spangereidkanalen starts in Båly. This gives smaller vessels the opportunity to transit inshore. Båly and its surrounding areas also offers white sandy beaches, great fishing grounds, trekking, rafting, kayaking and some beautiful old island settlements.

GENERAL FACILITIES

- Restaurants
- Shop
- Water
- Electricity TBA
- Wi-Fi
- White sandy beaches

SPORTS FACILITIES

- Kayaks
- Bikes
- Rafting

ACTIVITIES & PLACES OF INTEREST

- Lindesnes Lighthouse
- Underwater restaurant
- Great fishing grounds



For more information,
please scan the QR Code

DISTANCES IN NAUTICAL MILES

From Aberdeen to Båly: 299 nm
From Båly to Kristiansand: 38 nm

Arendal harbour

Arendal is a charming coastal city located in the heart of Southern Norway. Known for its scenic beauty and vibrant cultural life, Arendal attracts visitors throughout the year.

During the summer months, the city transforms into a lively hub, filled with music festivals, art exhibitions, and bustling outdoor cafes. The city's picturesque harbour is lined with colorful wooden houses, while the cobbled streets are brimming with unique boutiques and local shops.

Just a short ferry ride away, visitors can explore the serene beauty of Merdo Island, famous for its charming white houses and scenic walking trails. Arendal itself is home to a thriving cultural scene. Whether you're an art enthusiast, a music lover, or simply looking to enjoy the city's vibrant atmosphere, Arendal has something for everyone.

GENERAL FACILITIES

- Restaurants
- Shops
- Shopping mall
- Shore power (230V and 400V)
- Fresh water supply
- Toilets and showers in the marina, guest harbour
- Free internet

SPORTS FACILITIES

- Free access pool and showers (Marina, Arendal gjestehavn)
- Free outdoor training park (Barbu)
- Free sandvolleyball court (Barbu)
- Hiking
- Kayaks (Hove)

ACTIVITIES & PLACES OF INTEREST

- Canal Street (music festival 23-25 July)
- Cinema, bowling, VR, Lasertag and science centre.
- Bomuldsfabrikken Art hall and other galleries
- Kloekers Hus museum
- Merdogaard museum
- Kuben Museum



For more information,
please scan the QR Code

DISTANCES IN NAUTICAL MILES

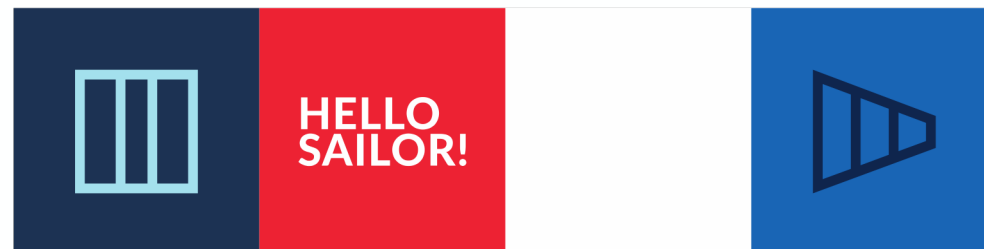
From Aberdeen to Arendal: 363 nm
From Arendal to Kristiansand: 40.5 nm



SIREVÅG Dates: July 26 Anne Marie
Gjølme E
annemarie.gjolme@ha.kommune.no T
+47 90 07 57 46 BÅLY Dates: 28 july
Karl R. Danielsen E post@kristiansand-
havn.no T +47 38 00 60 00 FARSUND
Dates: July 27 Tom Egil Ravndal E
tom.egil.ravndal@listerhavnene.no T
+47 94 53 21 88 ARENDAL Dates: July
26 –29 Gordon Fuglestad E
Gordon.Fuglestad@arendalhavn.no T
+47 46 62 80 08 KRISTIANSAND
Dates: July 30 –August 2 Karl R.
Danielsen E post@kristiansand-
havn.no T +47 38 00 60 00



tallshipsraceskristiansand.no





Crew centre and facilities

Crew Centre:

9 -'Krutthuset' in the western harbour

10 -Guest Harbour (second floor) in the eastern harbour.

There will be coffee/ tee available between 10:30-19:00

Showers:

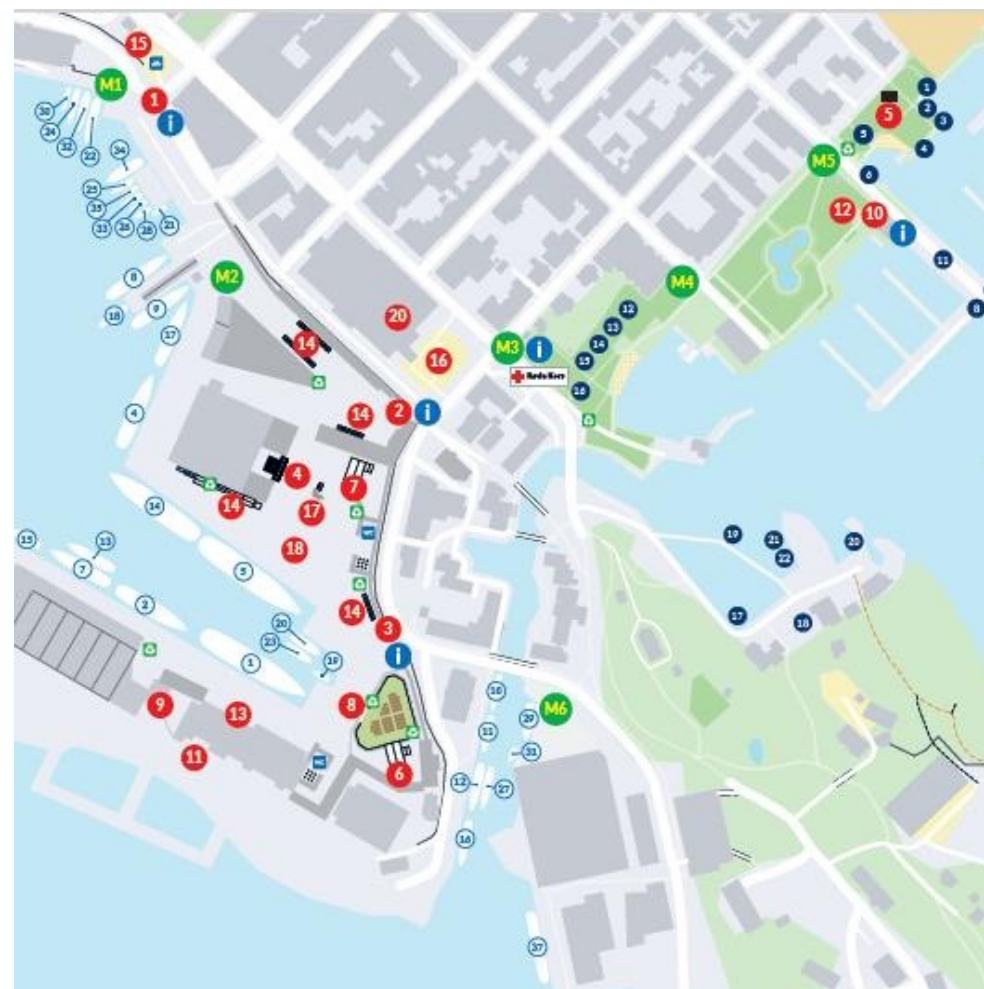
11 –Shower container for crew 12 –Showers in the guest harbour

Aquarama –all crew can use the showers in Aquarama (by the city beach), free of charge. Opening hours for crew are 10:30-20:00.

Laundry:

12 –The self-service laundry is open for crew on Wednesday, Thursday and Friday, free of charge for the crew when showing the TSR wristband.

tallshipsraceskristiansand.no



HELLO
SAILOR!





Crew, continue

Captains Dinner –please let us know your **food preferences** before 14:00 Wednesday.

Crew Party –Bendiksbukta at Odderøya

Sports activities, at the city beach outside Aquarama. Remember the **deadline for signing up -30 July at 15:00** (digital form in the Captains Manual)

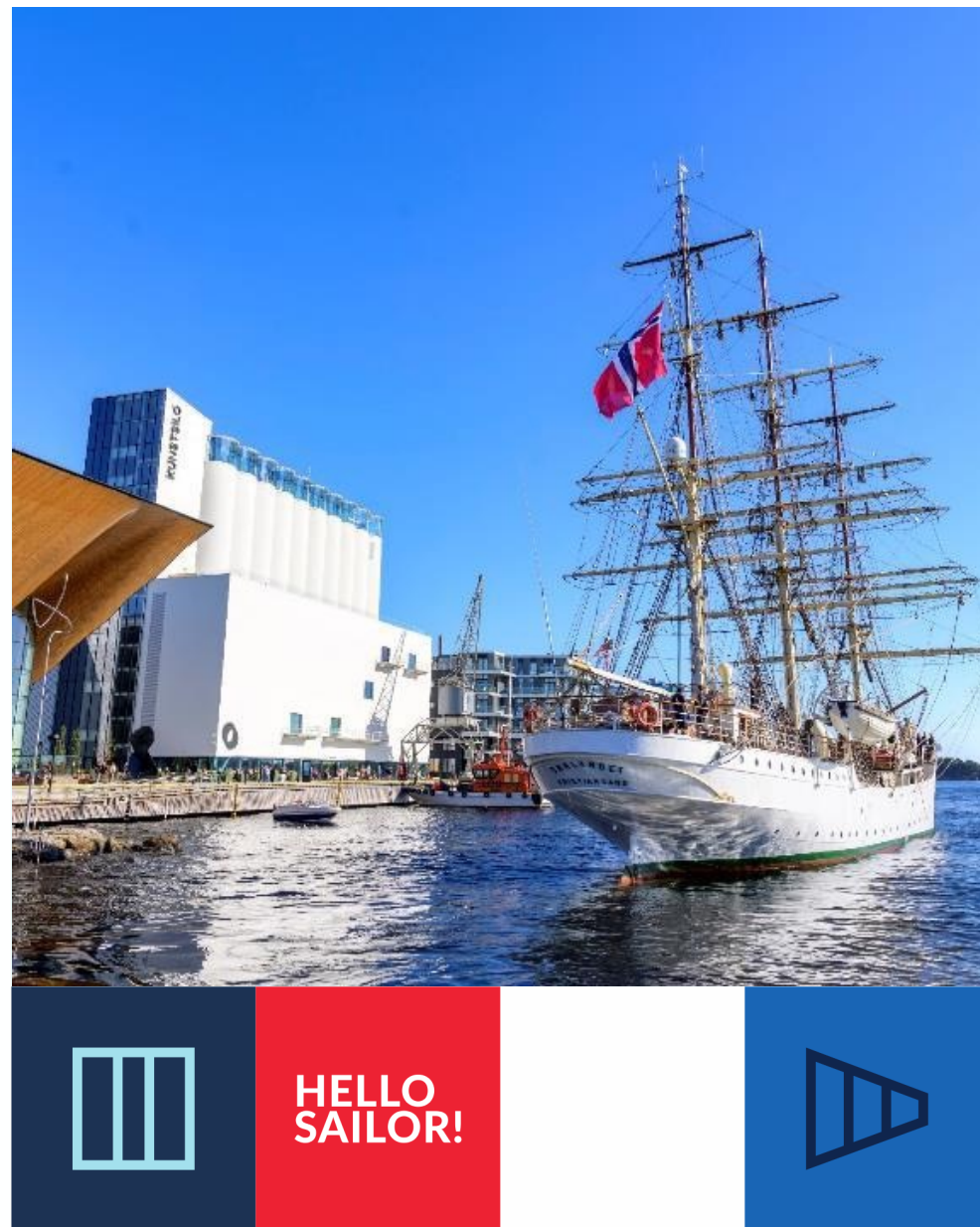
Crew Parade –Meet at the Town Square by the City Hall in good time, the parade starts at 15:00

Price giving ceremony, at the main stage in the event area, right after the Crew Parade

Sightseeing, the number of tickets for each ship is in the Captains Manual. **The deadline for signing up is 30 July at 15:00** (digital form in the Captains Manual)

Captains Briefing, at 15:00 Friday 1 August at hotel Caledonien

tallshipsraceskristiansand.no



HELLO
SAILOR!





Crew parade

The parade starts at the Town Square by the City Hall.

Be there in good time before the parade starts at 15:00

tallshipsraceskristiansand.no



4. Emergencies

4.1 Urgent Emergencies

The National Emergency numbers in Norway are:

Police: 112
Fire: 110
Ambulance: 113

Call the emergency number in case of emergencies where life, health, property or the environment is in danger. When you call the national emergency numbers 110, 112 or 113, - give your name - describe what has happened - give the municipality and the address as accurately as possible - answer the questions asked by the Emergency Response Centre's operator - follow the instructions given - do not hang up until you are told to do so. After the call has been made, Call the port authority +47 97 09 05 04 or VHF CH: 12

4.2 In need of medical treatment

Call the Medical Helpline's (Legevakten) toll-free number 116 117 (open 24 h) before seeking medical attention, they will guide you to the appropriate location for treatment and will advise you how urgently you need to seek treatment.

The medical care unit is open 24/7 and is located next to Kristiansand General Hospital (Sørlandets Sykehus Kristiansand)

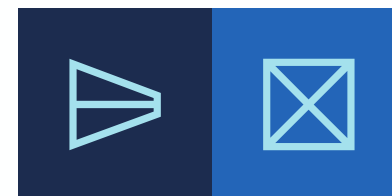
Sørlandets Sykehus Kristiansand
Egsveien 100
4615 Kristiansand

4.3 First Aid Situations

Medical support and procedures for the stay in Kristiansand - general information:

Kristiansand General Hospital also operates the ambulances and co-ordinates medical helicopter services. All hospitals and ambulances in Norway are public services. For European Union citizens public healthcare is free of charge, except for the patient's charge. You are obliged to bring a valid ID and health card. For non-European Union citizens, for use of private health services, health/travel insurance or private payment is necessary.

NB: For all medical emergencies call 113.





Questions ?



www.tallshipsraceskristiansand.no



tallshipsraceskristiansand.no



OTHER BUSINESS



Sail Training International

FEEDBACK FORM – DUNKIRK

<https://forms.gle/eUb6agRn3Dmihtxo8>

FEEDBACK FORM – ABERDEEN

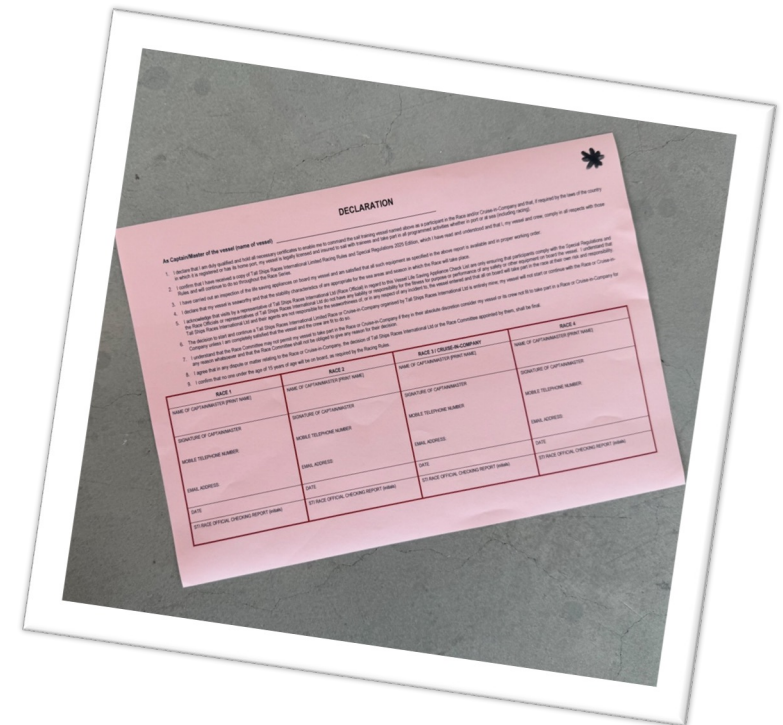
<https://forms.gle/3eMg7B8zZh5SP1qaA>



Sail Training International

PINK DECLARATIONS & CREW LISTS

CREW LISTS			
Race	Race Dates	No. Crew List Details	
LE HAVRE	04/07/2025 - 07/07/2025	66	Manage Crew Details
RACE ONE	07/07/2025 - 08/07/2025	66	Manage Crew Details
DUNKIRK	10/07/2025 - 13/07/2025	N/A	Manage Crew Details
RACE TWO	14/07/2025 - 18/07/2025	59	Manage Crew Details
ABERDEEN	19/07/2025 - 22/07/2025	59	Manage Crew Details



Sail Training International

ABERDEEN ROCK TROPHY



Sail Training International

SURVIVAL TRAINING - ESBJERG



Esbjerg
Kommune



OPLEV
ESBJERG



Sail Training International

The Tall Ships Races Trainee Feedback Questionnaire



Complete our online survey for a chance to win some epic prizes!



plus...

A FREE Voyage
during The Tall Ships Races
2026



HAVE YOUR SAY!

SCAN THE QR CODE TO FILL OUT THE FORM

DEADLINE FOR COMPLETION: 31ST AUGUST 2025

FOLLOW US ON SOCIAL MEDIA



@TALLSHIPSRAVES



SAIL TRAINING INTERNATIONAL

FRIENDSHIP TROPHY



Sail Training International

THANK YOU



Sail Training International