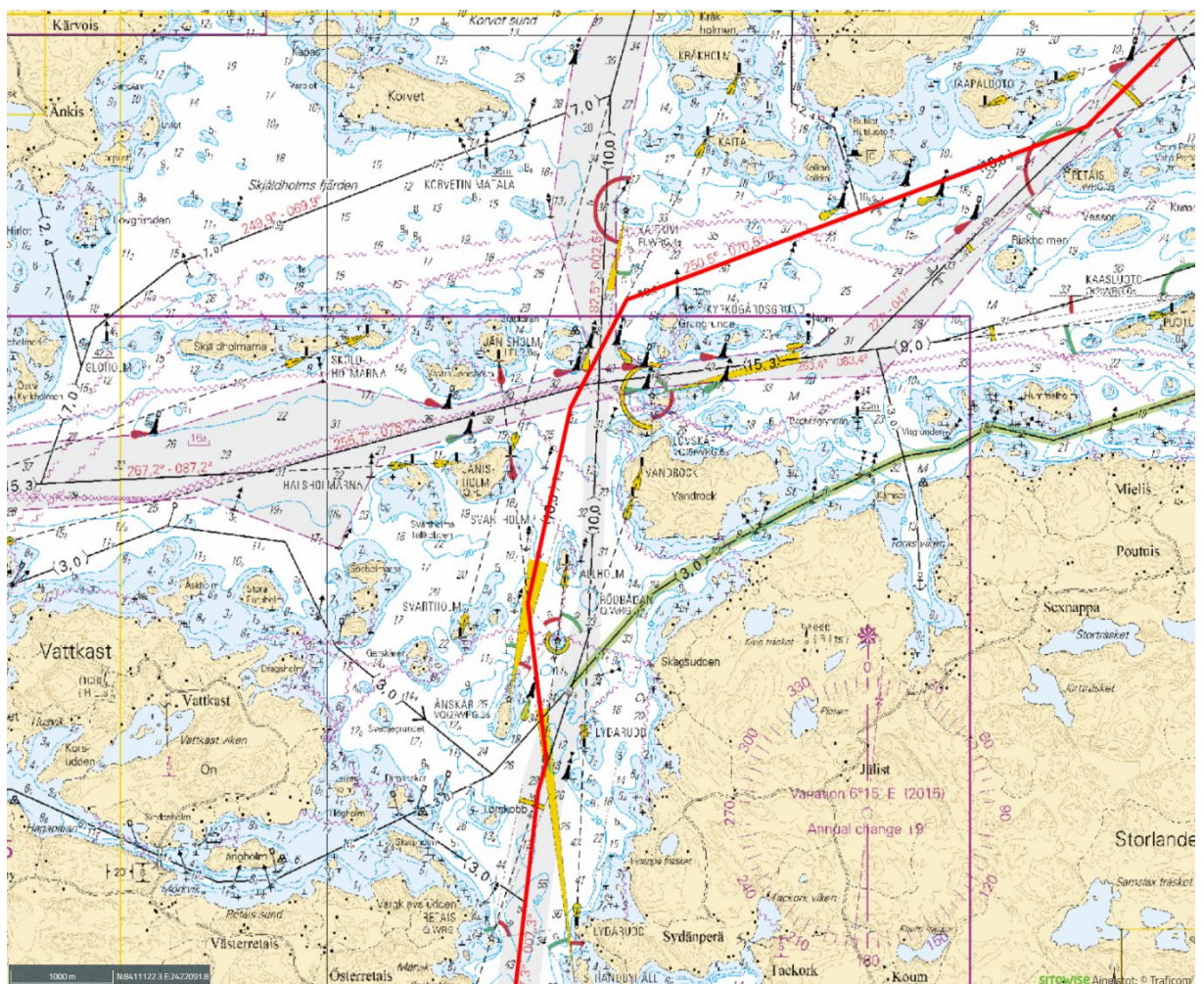
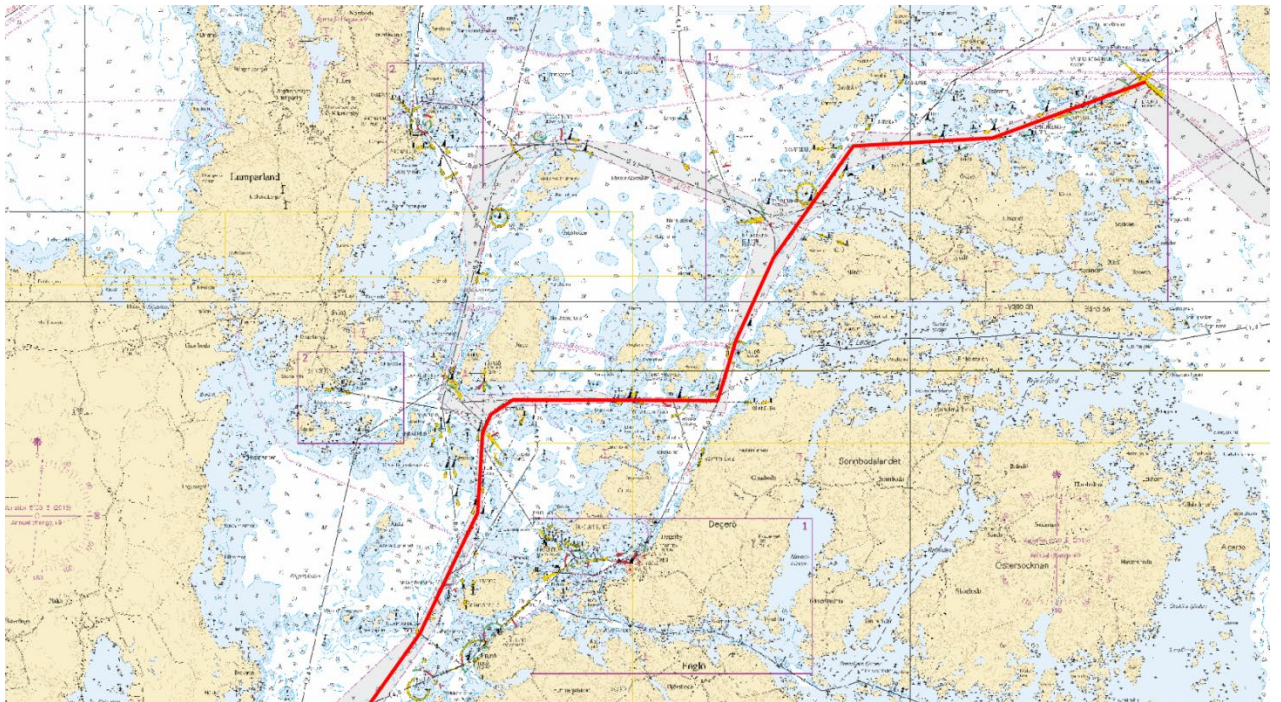


Guidelines for navigating in Archipelago-VTS area for vessels over 24m

- Always keep watch on VHF channel 71 and reporting to VTS according to Masters Guide.
<https://mastersguide.fintraffic.fi/en/welcome-archipelago-vts>
- Expected routes in certain narrow passages due to commercial shipping.
 - Lövskär south of Innamo towards Utö



- Via Hjulgrund in Aland archipelago



- No mooring to Mariehamn western harbor between 1300-1500 LT because of intense passenger ferry traffic.
- In possible anchoring situations take contact to Archipelago-VTS on VHF channel 71 before dropping anchor.
- In case of any uncertainty feel free to contact Archipelago-VTS on VHF channel 71.

Tel: +358204486521.

e-mail: archipelago.vts@finntraffic.fi