

# TALL SHIPS RACES 2024

Captains' Briefing – MARIEHAMN



Sail Training International

# UNDOCKING & PARADE OF SAIL



# Departure time

- Please start to prepare the vessel well ahead of the departure time
- The departure will start at 15:30 with ORP ISKRA departing from Klintkajen at 15:30 hrs
- Training vessel MS MICHAEL SARS will take the lead.
- Individual vessel find their departure time in the time sheet.



# Time slot

Departure Group	Ship Name	Tentative Bert number and name	Position: 1 Closest to berth	Departure time
1	DAR MLODZIEZY	1 Kaj 2	1	18:00
2	GUAYAS	2 Kaj 1	1	16:30
3	ORP ISKRA	3 Klintkajen	1	15:30
4	POGORIA	4 Kraftverkskajen Norra	1	15:45
5	FRYDERYK CHOPIN	5 Kraftverkskajen Södra	1	16:00
6	ROALD AMUNDSEN	6 Sopudden Norra M	1	16:15
	KAPITAN BORCHARDT	6 Sopudden Norra M	2	16:15
	JOHANN SMIDT	6 Sopudden Norra N	1	16:30
	KAPITAN GLOWACKI	6 Sopudden Norra N	2	16:30
	GENERAL ZARUSKI	6 Sopudden Norra N	3	16:30
7	GROSSHERZOGIN ELISABETH	7 Sopudden Södra	1	16:30
8	HELENA	8 ÅSS Norra kaj	1	16:00
	VALBORG	8 ÅSS Norra kaj	2	16:00
	PASCUAL FLORES	8 ÅSS Norra kaj	3	16:00
	LINDA	8 ÅSS ponton A	4	15:45
9D-E	INGRID	9 ÅSS kaj F-G	1	15:30
	CONSTANTIA	9 ÅSS ponton D	1	15:30
	JENS KROGH	9 ÅSS ponton D	2	15:30
	ALBANUS	9 ÅSS ponton E	1	15:30
	AGLAIA	9 ÅSS ponton E	2	15:30

9F	ZRYW	9 ÅSS ponton F	1	15:30
	TORNADO	9 ÅSS ponton F	2	15:30
	PUPU	9 ÅSS ponton F	3	15:30
	MERIKAPY	9 Åss ponton F	4	15:30
	WILLIWAW	9 Åss ponton F	5	15:30
	AURANTYTTO	9 Åss ponton F	6	15:30
	BELFER II	9 ÅSS ponton F	7	15:30
	TOKKA-LOTTA	9 ÅSS ponton F	8	15:30
	FARUREJ	9 ÅSS ponton F	9	15:30
	MARENGO	9 ÅSS ponton F	10	15:30
	BELFER	9 Åss ponton F	11	15:30
	THEIA	9 Åss ponton F	12	15:30
	SARMATA II	9 Åss ponton F	13	15:30
	TUULELIND	9 Åss ponton F	14	15:30
9G	GRATITUDE	9 ÅSS ponton G	1	15:30
	GEDANIA	9 ÅSS ponton G	2	15:30
	RUPEL	9 ÅSS ponton G	3	15:30
	BETTY	9 ÅSS ponton G	4	15:30
	VAHINE	9 ÅSS ponton G	5	15:30
	HENRIKA	9 ÅSS ponton G	6	15:30
	VESTA	9 ÅSS ponton G	7	15:30
	TORNADO II	9 ÅSS ponton G	8	15:30
	LIETUVA	9 ÅSS ponton G	9	15:30
	DAR SZCZECINA	9 ÅSS ponton G	10	15:30
9H	SAEFTINGHE	9 Åss ponton H	1	15:30
	EXCELSIOR	9 ÅSS ponton H	2	15:30
	ITS STELLA POLARE	9 ÅSS ponton H	3	15:30
	HIIUINGEL	9 ÅSS ponton H	3	15:30
	HNLMS URANIA	9 ÅSS ponton H	4	15:30
	CYKAS	9 ÅSS ponton H	5	15:30
	WIELKOPOLSKA	9 ÅSS ponton H	6	15:30
	CHRISTIANIA	9 ÅSS ponton H	7	15:30
	TARA	9 ÅSS ponton H	8	15:30
BIES	9 ÅSS ponton H	9	15:30	

# Communication

Harbor office and Linesmen

VHF Channel 72

Tugboats

VHF Channel 68



# Tugboats and Pushers

- 2 tugboats, 4mt bollard pull each will be available for the departure
- Tugs are working on VHF ch. 68.
- Pushers will be available in the Marina



# Start and Transit speed

- The Parade starts when passing the 4 mb Pommern and ends when passing the southern outer limit of the port.
- The transit speed during the parade is 4 knots.



# Route out from the harbour area

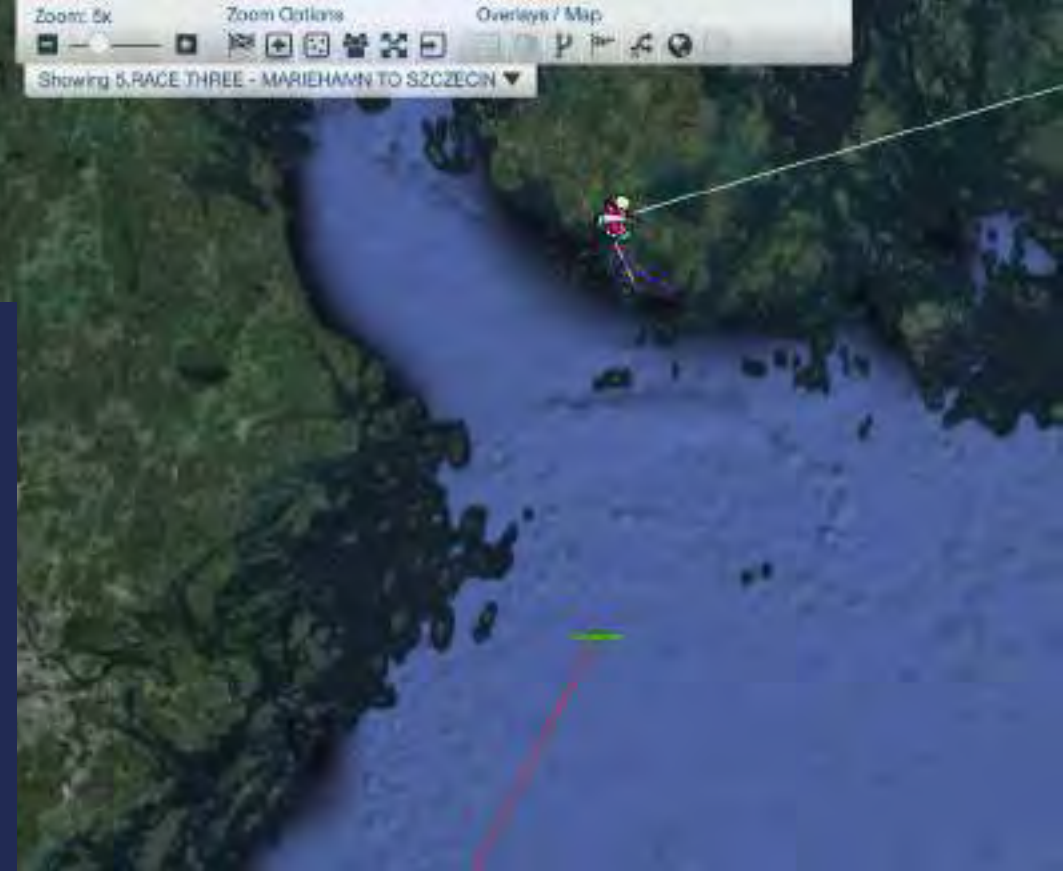




# RACE START



# RACE START



## RACE START

- START AREA :

Starboard end	59° 24,5' N 019° 47,0' E
Port end	59° 24,5' N 019° 56,9' E

- START GATE TIMES :

0300 UTC - 0500 UTC SUNDAY JULY 28TH



# RACE START

## RULE 17 – Start Line configuration - STARBOARD tack



**NO ENTRY**  
into START BOX  
until 20 minutes

## RACE START BASICS:

- Race Control on stby VHF CH 77
- Don't be early!
- ALL VESSELS RECORD YOUR INDIVIDUAL START TIME
- PLEASE STAY AWAY FROM THE START BOX UNTIL 20 MINS BEFORE START
- ENGINE MUST NOT BE USED LESS THAN 20 MINS BEFORE THE START (UNLESS MORE THAN 1NM FROM THE START LINE)



# RACE COURSE



# RACE COURSE

## RACE COURSE

### Start Area

Starboard end  
Port end

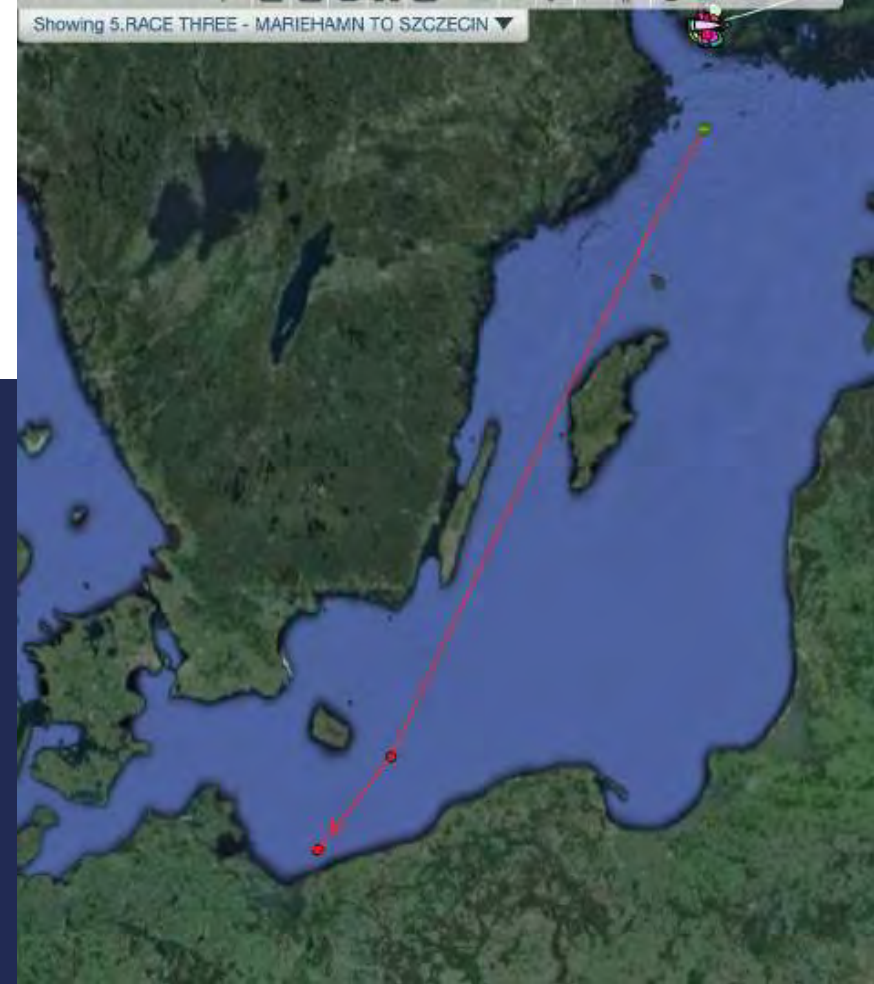
59° 24,5' N 019° 47,0' E  
59° 24,5' N 019° 56,9' E

### Waypoint 1

54° 55,0' N 015° 44,0' E  
TO STARBOARD

### Finish Line

Bearing 300°  
from Niechorze Lighthouse  
(54° 05,7' N 015° 03,8' E)  
for a distance of 10 to 15nm.



# RACE COURSE

## RACE COURSE

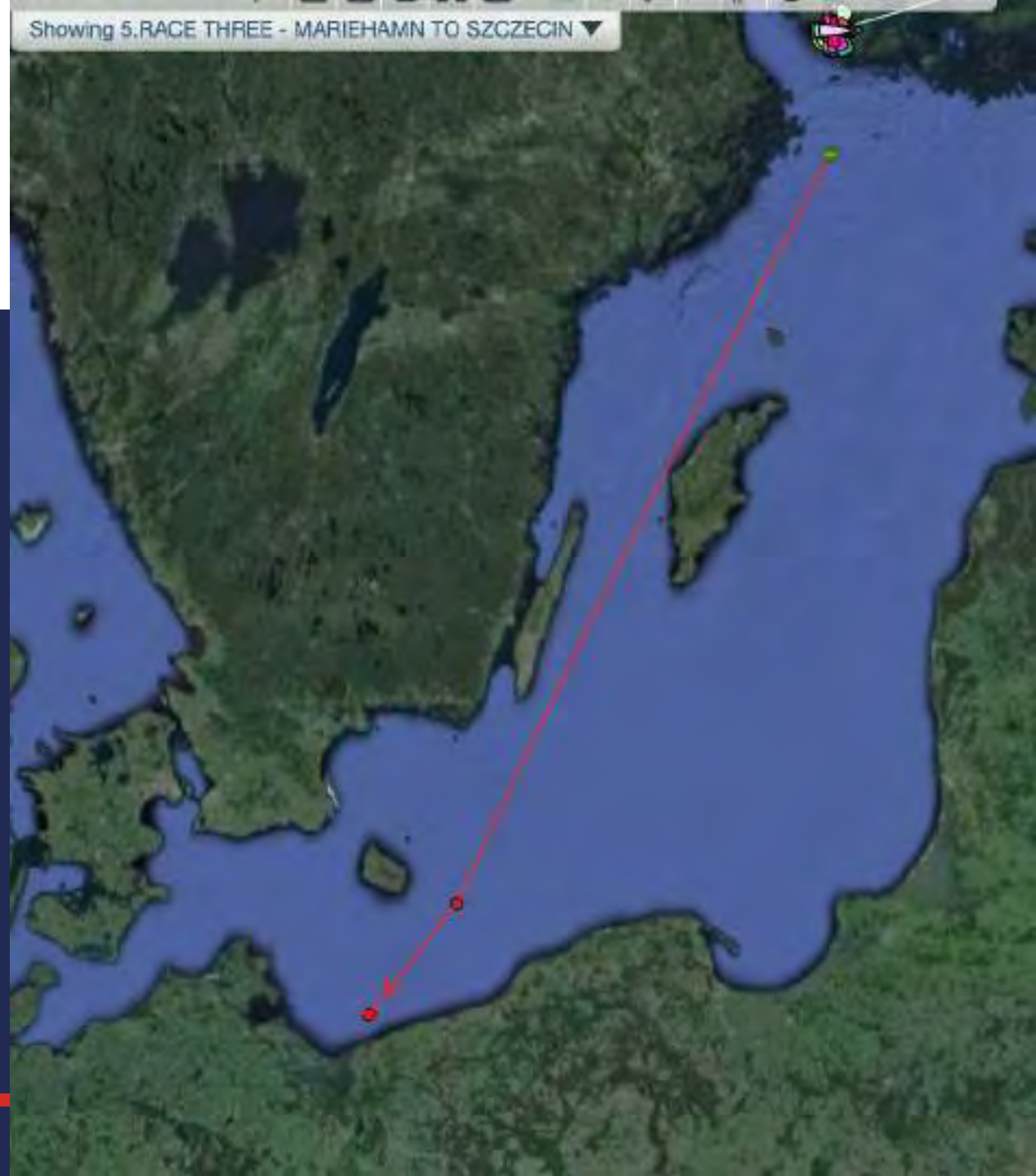
- TIME LIMIT

CLASS A , CLASS B, CLASS C/D

1200 UTC 01 AUGUST

- STANDARD TIME PENALTY

2 Hours 58 Mins



# EXCLUSION ZONES

**ALL TSS**

**=**

**NO GO ZONES**





# ANOTHER RACE

- 115 FAST YACHTS
- 600 NM COURSE
- SIMILAR RACE TRACK
- YB TRACKING



— ROSCHIER —

**BALTIC SEA RACE**

Sweden

Helsinki

Baltic Sea

Gotland

Hiiumaa

Saremaa





# RACE COMMUNICATIONS

Mal Riley

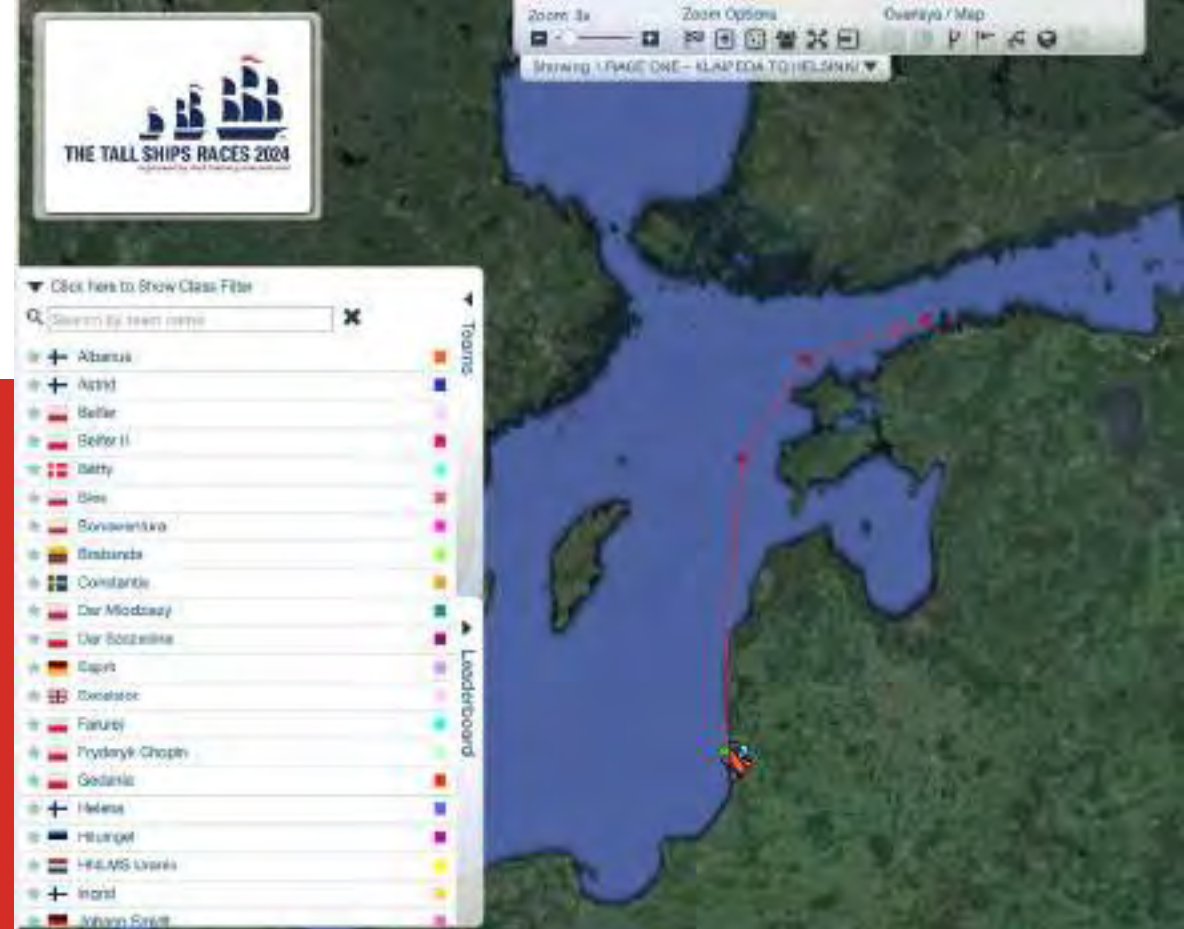


Sail Training International

# RACE COMMUNICATIONS

Your YB tracker will transmit every 60 minutes.

Additionally within 2nm of the Starting Area, WP1 and Finish Line YB tracker will transmit every 10 minutes.



HOW TO FOLLOW:

<https://sailtraininginternational.org/yb-tracking/>



Sail Training International

# RACE COMMUNICATIONS

COMMS OFFICERS: Malcom RILEY & Vernon HARTEN-ASH

CALL SIGN **'RACE CONTROL'**

email: [commsofficer1@mailasail.com](mailto:commsofficer1@mailasail.com)

Primary Working Frequency **VHF CH77**

Secondary Working Frequency **HF 4146**

Iridium **(CALL ONLY, NO TEXT MESSAGE) - +88 167 777 3281**

Race Director **(TEXT MESSAGE & CALLS) - + 48 501 025 799**



# RACE COMMUNICATIONS

## 2 Schedules per day

TEST VHF communications	0758 and 1658 UTC
Sat communications	0800 and 1700 UTC
Voice communications	0815 and 1715 UTC (VHF CH 77, then HF 4146)
First Regular Comms Schedule	1715 UTC 28 July (Sunday)



# RACE COMMUNICATIONS

## AFTER THE START

### 'Start Times' Communications Schedule

RACE CONTROL will conduct a '**START TIMES**' communications schedule at 0600 UTC in order to collect ships' individual start times



# RACE COMMUNICATIONS

The communications officer will call each vessel as listed in the schedule.

Pass your Lat and Long when called: e.g: 55 27 08 26 (just degrees & minutes)

The communications officer will pass back your race placings (Class and Overall)

Any relevant weather information will be broadcast at the end of the schedule , along with any other race related information.

Please maintain **Radio Silence** during the schedules.



# RACE COMMUNICATIONS

COMMS VESSEL – DAR MŁODZIEŻY

STBY COMMS VESSEL - URANIA

Any vessel not able to contact 'Race Control' by Radio can use any of the alternative methods:

- SMS to Race Director: +48 501 025 799
- Relay through another vessel (competing or commercial)
- Any other method



# RACE COMMUNICATIONS

## FINISHING THE RACE:

Pass your Finish Time **(to the nearest second)**, future intentions, retirements and ETA for HELSINKI to RACE CONTROL

Remain on communications schedule until stood down by RACE CONTROL

**THIS INCLUDES VESSELS THAT HAVE RETIRED AND VESSELS THAT HAVE FINISHED**





# RACE COMMUNICATIONS

## FINISHING AT SEA:

The Race Committee monitors the fleet's progress and, if the fleet is expected to be late into HELSINKI, the RACE TIME LIMIT will be changed. The details to be broadcasted by RACE CONTROL.

At the new TIME LIMIT for your class, note your position and report it to RACE CONTROL.

**Please do not retire!**



# RACE COMMUNICATIONS

## If ONE Report Missed

- *Noted and STP may be awarded*

## If TWO Reports Missed

- *Concerned and another STP may be awarded*

## If THREE Reports Missed

- *another STP may be awarded and may be DSQ*

***MRCC may be informed and SAR considered***

**NO REPORTS!**



# ARRIVAL TO SZCZECIN





**THE TALL SHIPS RACES**  
**Szczecin 2024**

*organised by Sail Training International*

**2-5.08.2024**





we are ready...

we are waiting...

sail AFAP...

to SZCZECIN







## CAPTAINS' MANUAL

#visit  
SZCZECIN

JUNE 2024

# Captains' Manual

**Read it today!**

Not only in case of emergency (or after)?

There you will find all useful navigation tips:

- approach,
- tugs,
- pilot,
- berthing plan,
- how to sail,
- much more.

**nevertheless, I will give you some highlights...**



# Approach to Świnoujście

Charts, Frequencies, Call Signs?

2. ARRIVAL ARRANGEMENTS

### 2.1 CHARTS

British Admiralty Charts	2679	2678	2677	2678
Germany Charts	151	151B	1513	1513
Polish Charts	74	46	47	48
Small Craft Charts	3022			

### 2.2 FREQUENCIES

STATION / OPERATIONS	CHANNEL	CALL SIGN
Świnoujście	12	SWINOUJŚCIE TRAFFIC
VTS Szczecin	69	SZCZECIN TRAFFIC
Pilots	69	SZCZECIN PILOT
Agent	-	POLSTEAM
Berthing operations	17 and 6	POLSTEAM
Sailing Shop	77	SMART

### 2.3 CALL SIGNS

STATION / OPERATIONS	CHANNEL	CALL SIGN
VTS Świnoujście	12	SWINOUJŚCIE TRAFFIC
VTS Szczecin	69	SZCZECIN TRAFFIC
Pilots	69	SZCZECIN PILOT
Agent	-	POLSTEAM
Berthing operations	17 and 6	POLSTEAM
Sailing Shop	77	SMART

waste of time now see Manual...

Route Menu



# Approach to Świnoujście

## Who has to report!

- **LOA > 20m** has to report
- **LOA < 20m** no need to report but should proceed with caution and listen on Ch12 for traffic information
- First contact with VTS ŚWINOUJŚCIE:
  - 2h before pilot embarkation
  - or 15 minutes before entering a VTS zone (if no pilot required)

Follow ALRS Vol.6 and captains' manual



# Approach to Świnoujście

All vessels should keep **west of the approach** fairway.

Vessels approaching from the East should cross the fairway and approach the west side as well (report to VTS intention to cross).

Crossing anchorage area is prohibited unless VTS permission is granted.

There are **4 anchorages** available on the roads to Świnoujście harbour:

1A - max. draught up to 7.0m

1B - max. draught up to 6.0m

2A - max. draught up to 9.5m

2B - max. draught up to 11.0m





B,C,D class and traffic

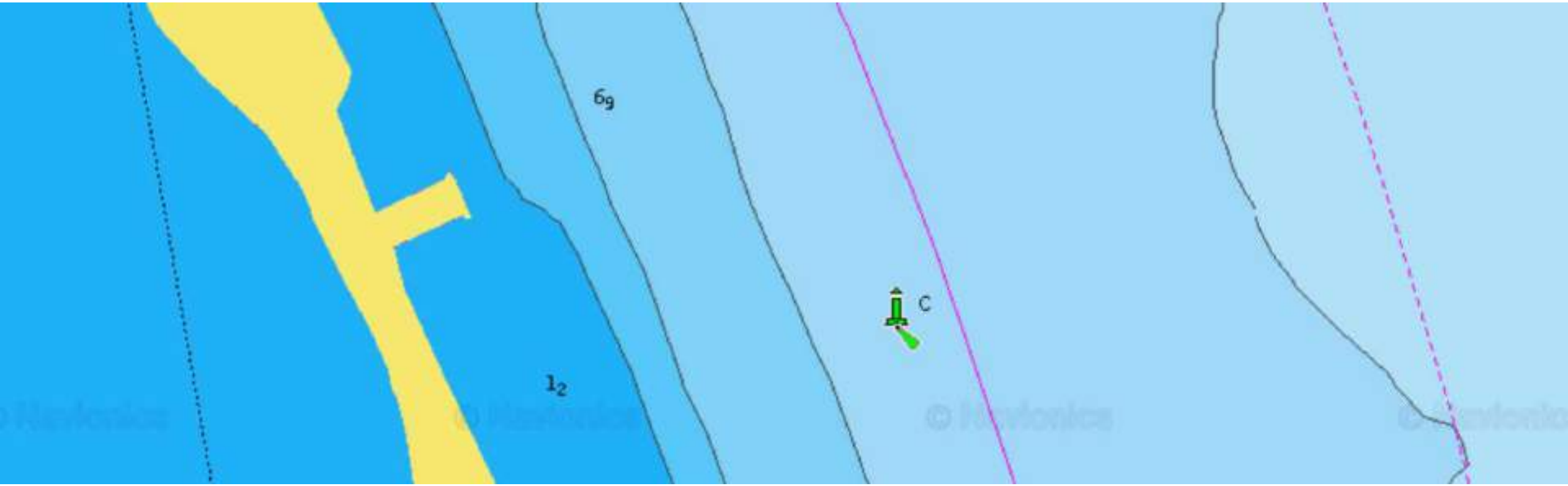


B,C,D class and traffic



A class or no traffic







# Pilotage

All ships requiring Pilot (**LOA > 75m**) requested to send order via Agent (Polsteam) min. 24 hrs in advance.

Please confirm ETA 4 hrs in advance by Agent or directly to Szczecin Pilot Station:

tel. +48 91 4325656

fax. +48 91 4325657

e-mail: [stacja@szczecinpilot.pl](mailto:stacja@szczecinpilot.pl)

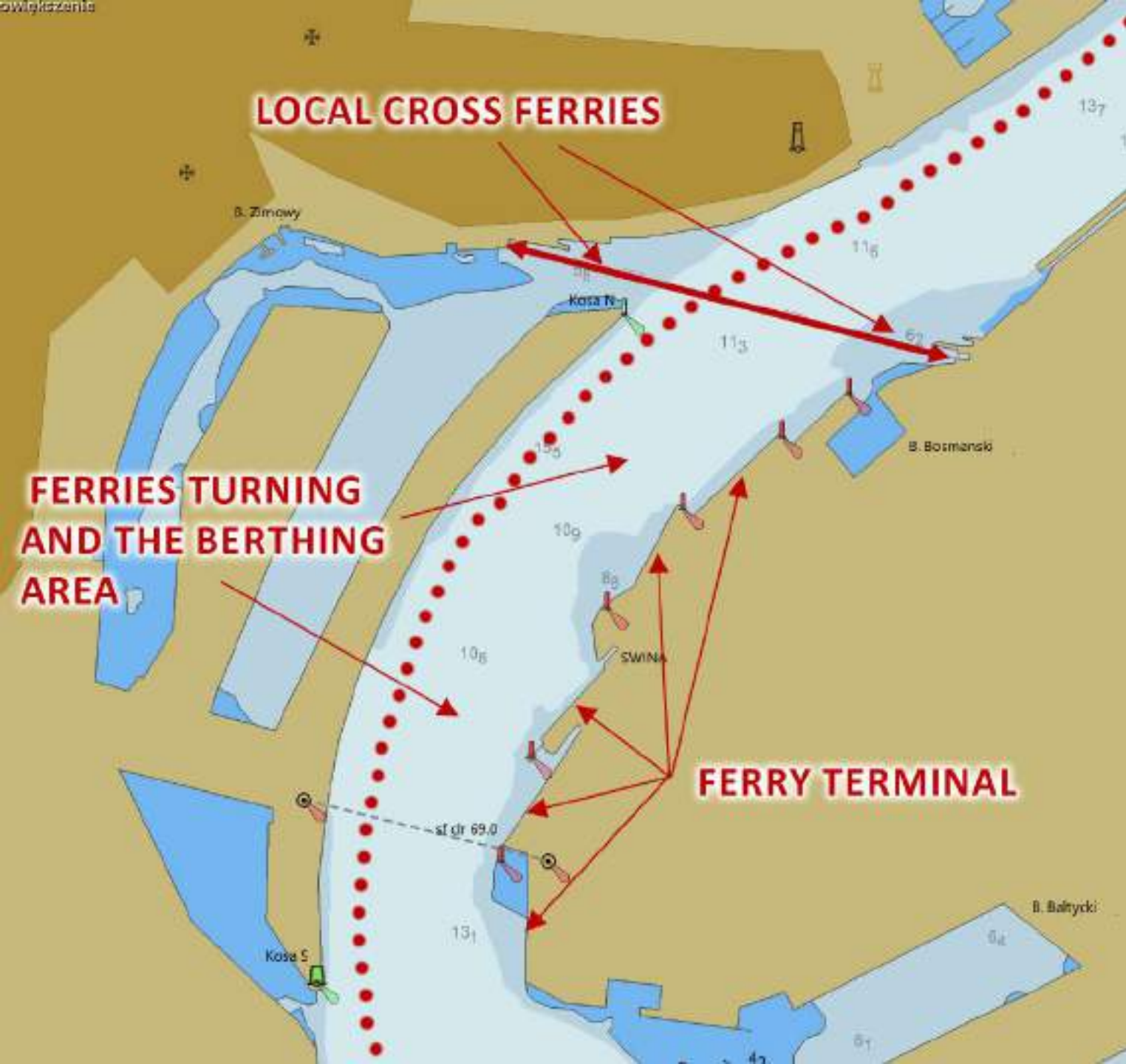
1 hr before the arrival of Pilot boarding ground, call:

”**Świnoujście Pilot Station**” on **Ch68**

to confirm Pilot’s boarding time and arrangements.







## Due to high density of traffic in port of Świnoujście

(~20 sea ferries in/out per day),  
2 local ferries crossing every 20 min.,  
merchant ships in transit,  
and other ships),

**PLEASE**

keep a sharp `look` and  
proceed with caution.



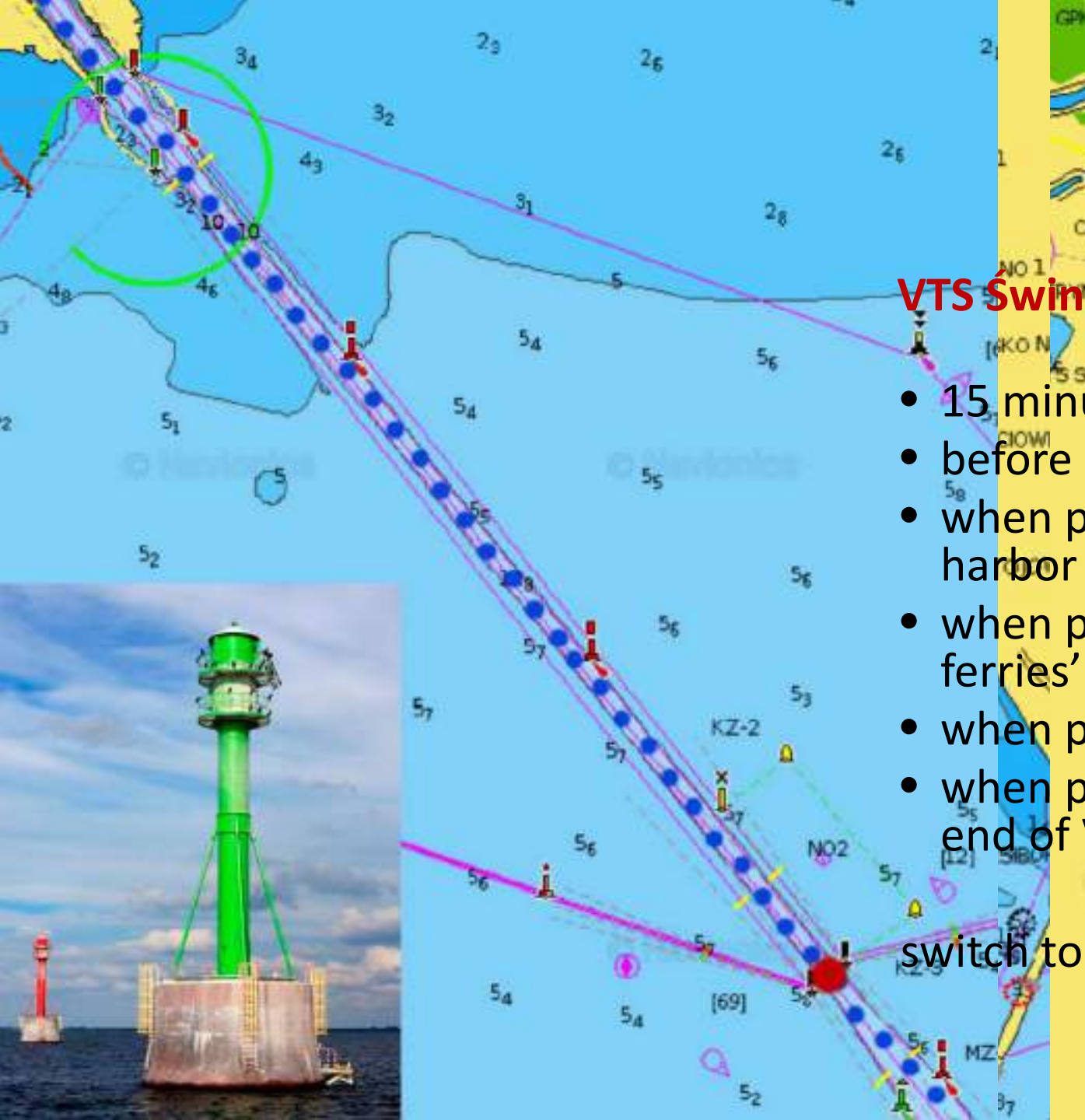


# Reporting

## VTS Świnoujście 12CH

- 15 minutes before entering VTS area
- before crossing the fairway (ask for permission)
- when passing central breakwater of Świnoujście harbor
- when passing abeam 'Świnoujście LtH' call 'Bieliki ferries' Ch. 12 VHF, report transit to Szczecin
- when passing Karsibor Ferry – no more reporting
- when passing Brama Torowa no. 2 (Tower no. 2) end of VTS Świnoujście

switch to VHF69

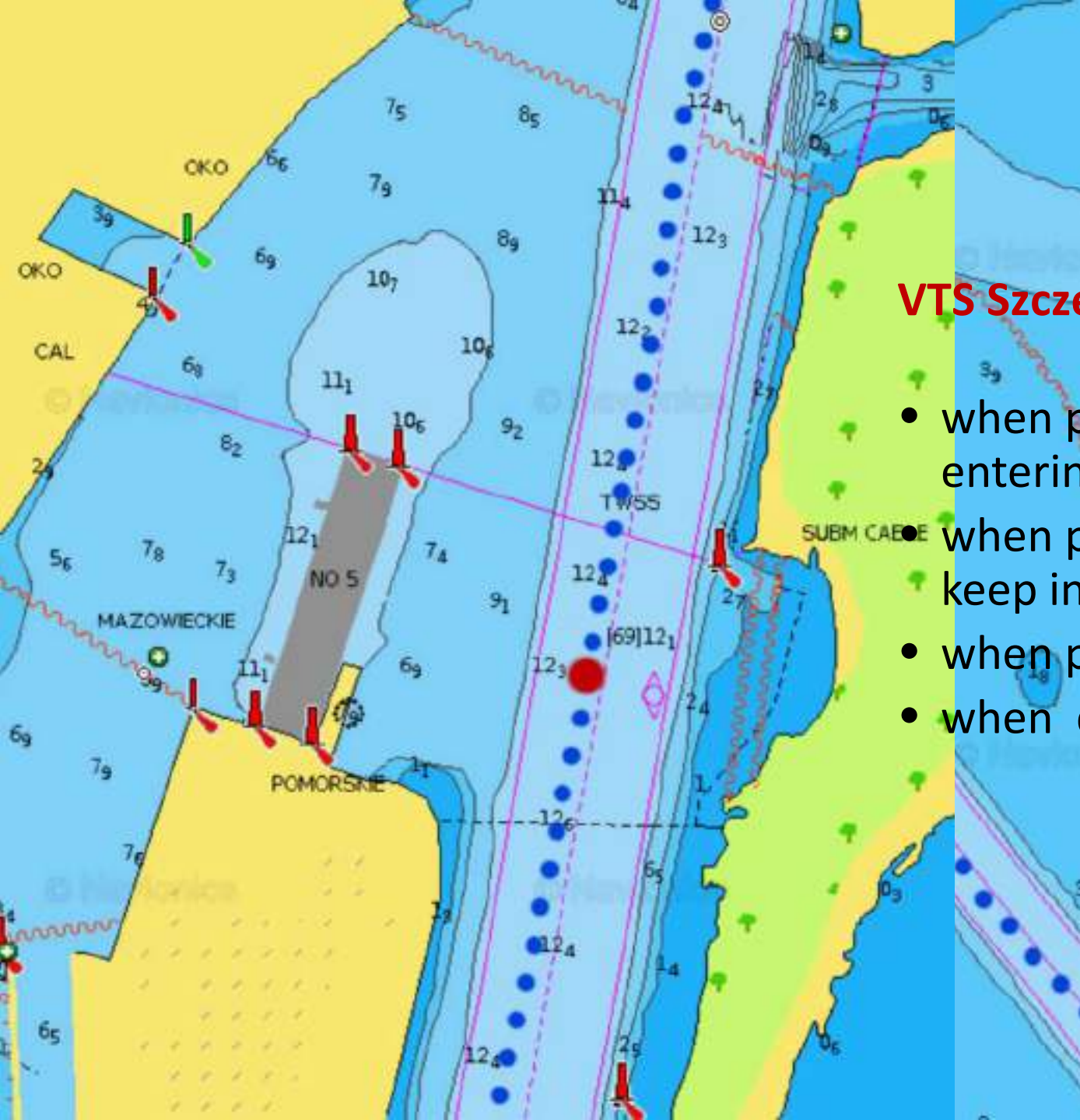




# Reporting

## VTS Szczecin 69CH

- when passing Brama Torowa no. 2 (Gate no. 2) entering VTS Szczecin
- when passing Brama Torowa no. 4 (Gate no. 4) keep in the middle of the fairway
- when passing Dock no. 5
- when docking is completed



# Welcome Ceremony

There is a traditional 'welcome ceremony' when passing the Pilot Station. Ship's national anthem is being played and 'flag salute' presented.

Please keep the distance between ships while passing Pilot Station to complete the ceremony (3-4min.)



**53 28.2N**  
**14 36.1E**







# Docking

All ships should contact a shore berthing crew (Polsteam) on Ch.17 VHF while passing EWA silo, for berthing instructions.

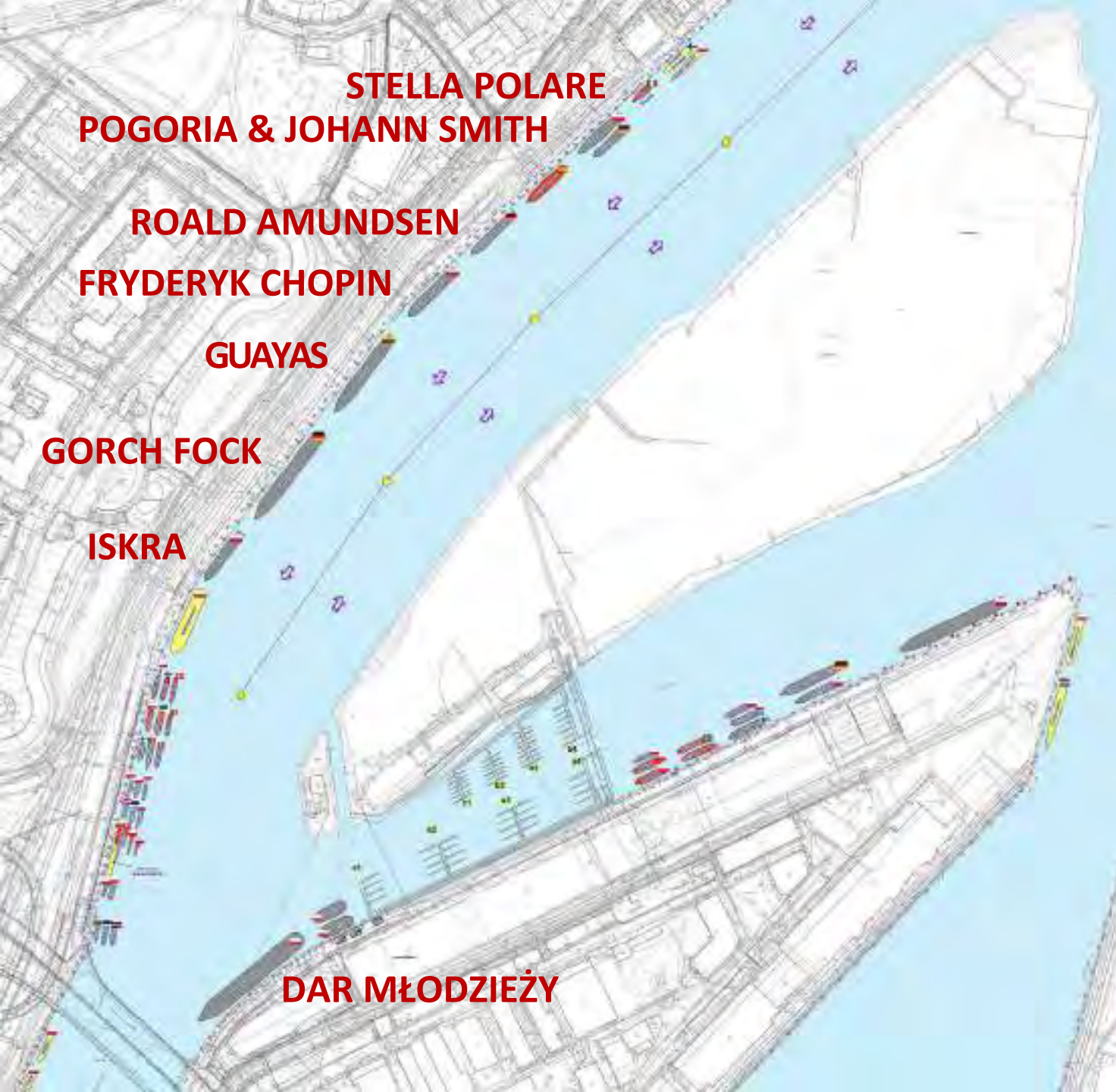
Mooring service is compulsory for **LOA > 50m**

See a berthing plan in manual.

**53 26.2N**

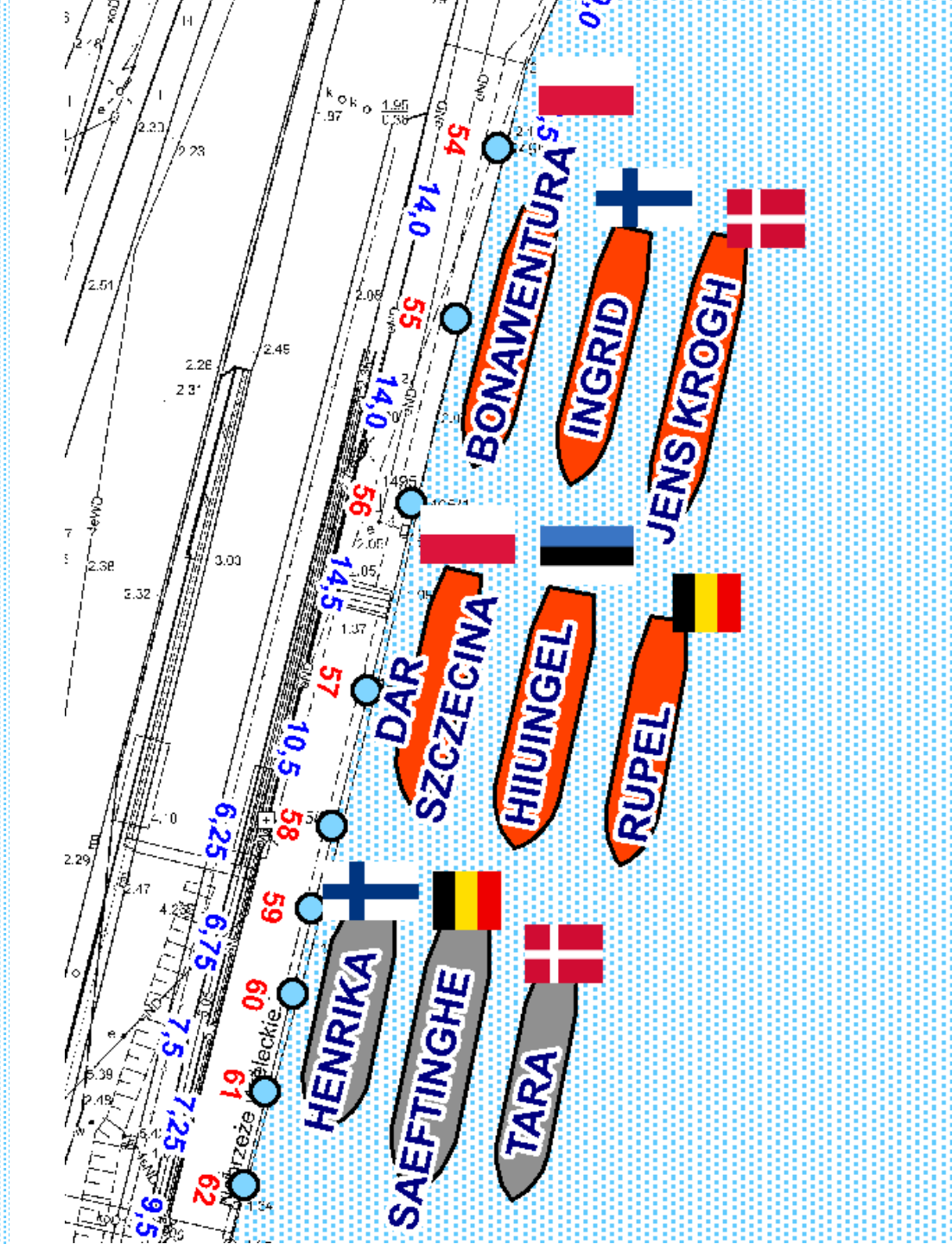
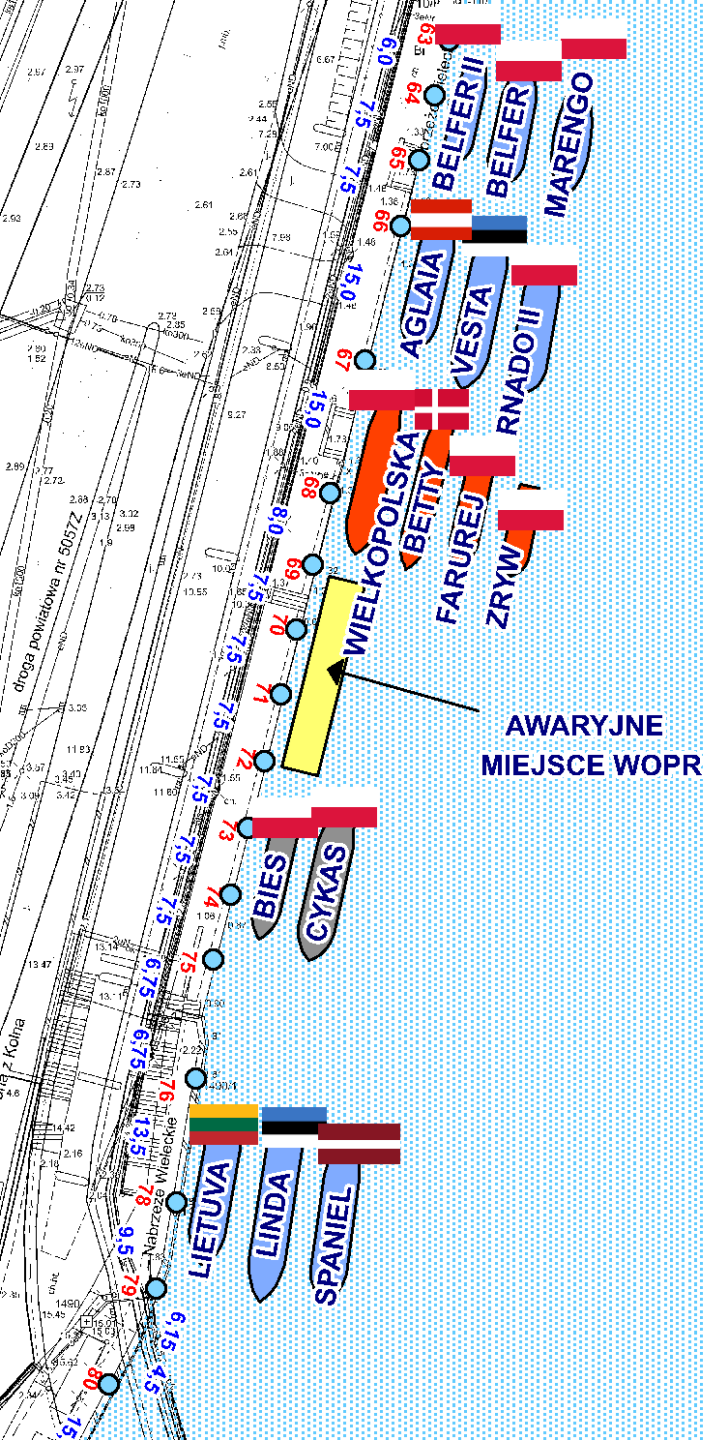
**14 35.1E**



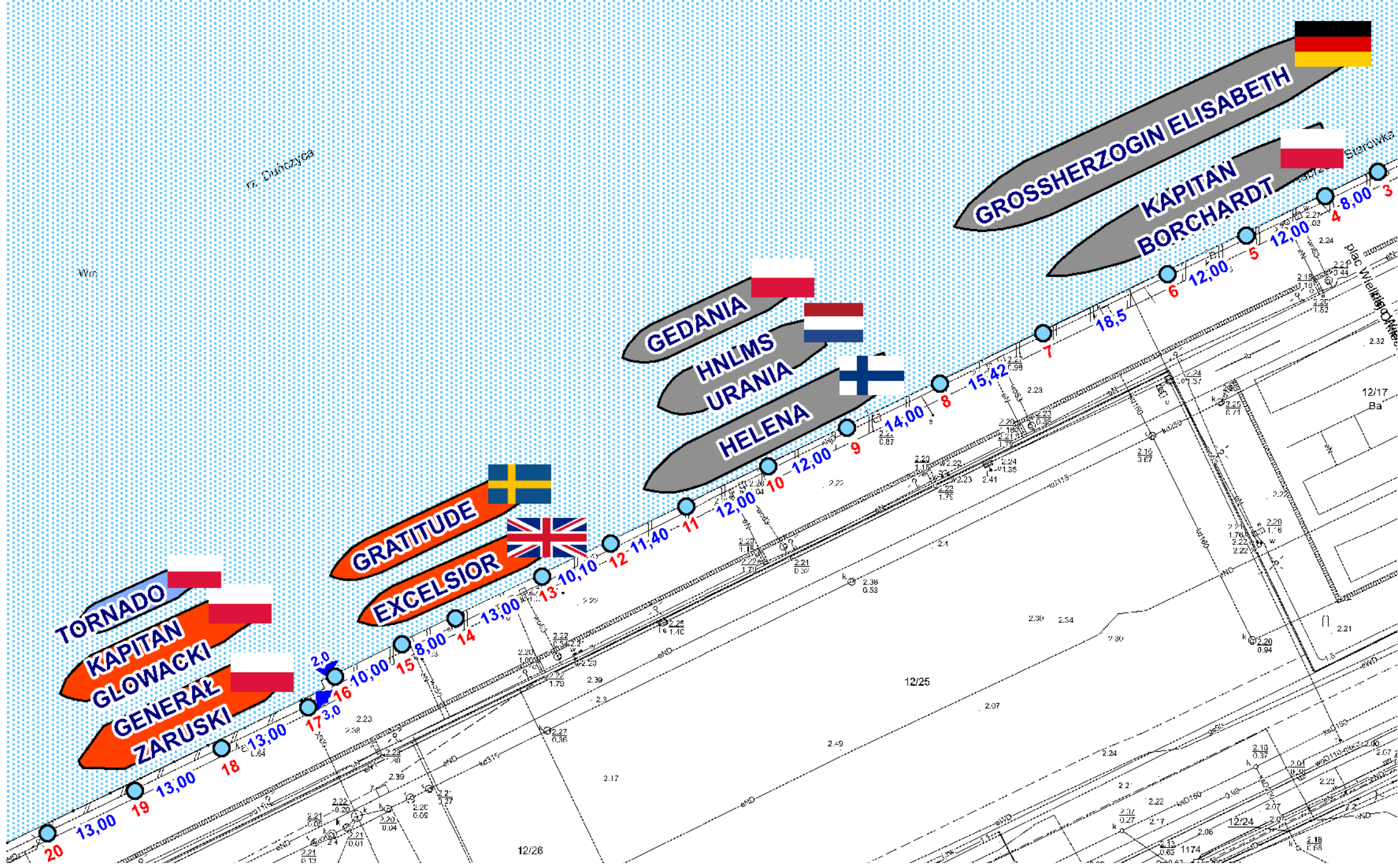


# Docking Plan





# Docking Plan







# Tugs

Tugs are available free of charge. It is compulsory for **LOA > 90m** and should be ordered minimum twelve hours in advance.

## **Please contact:**

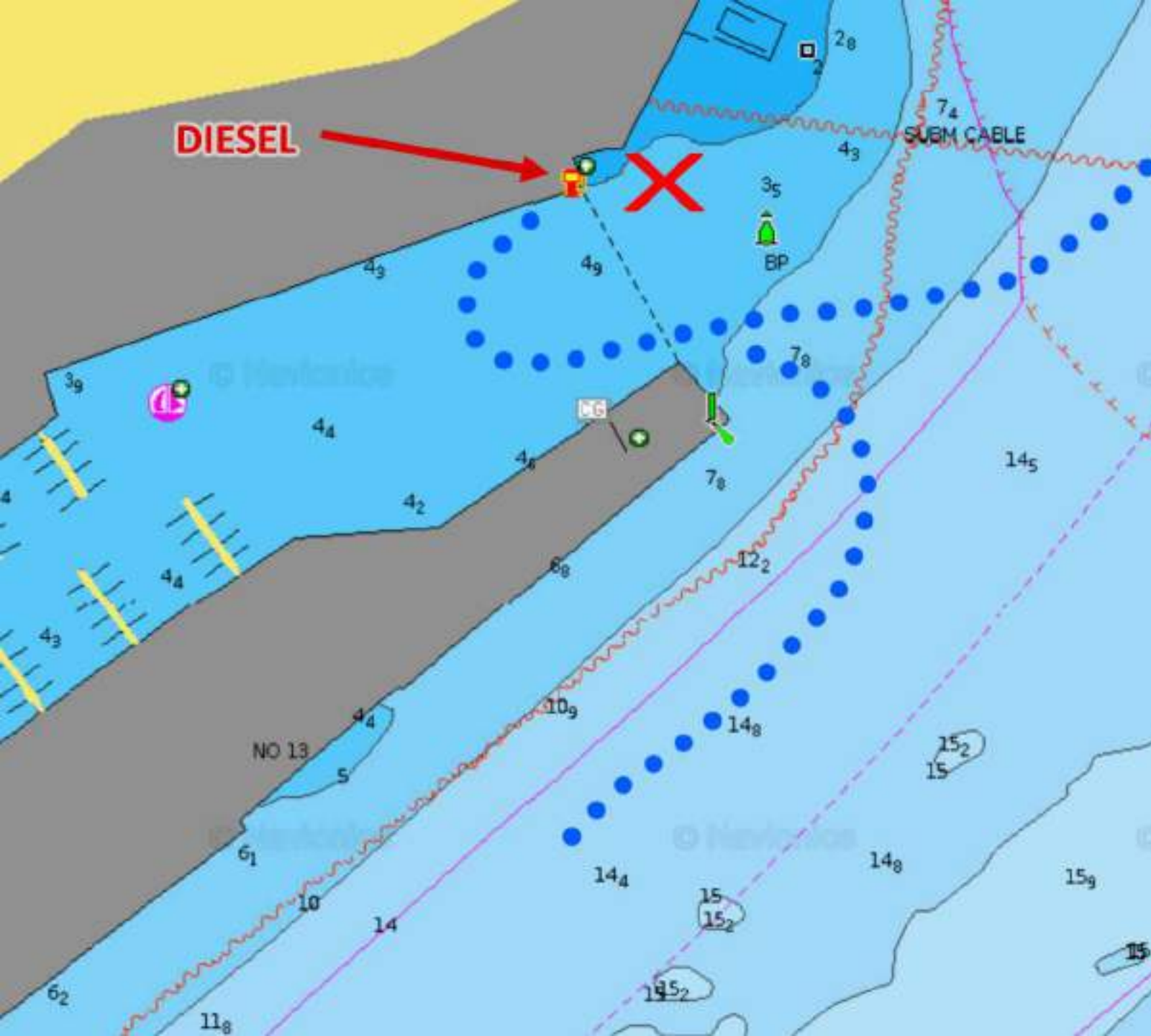
Polsteam Shipping Agency  
[agency@polsteam.com.pl](mailto:agency@polsteam.com.pl)

tel.: +48 693 437 165

tel.: +48 603 914 745

tel.: +48 603 914 744

# Fuel



It is recommended for **BCD class vessels** (and smaller A class) to take fuel in marina **'North Basin'** located in port of Świnoujście.

*Open:* Mon-Sun 09:00-18:00  
*Mobile:* +48 665 591 771



# Fuel

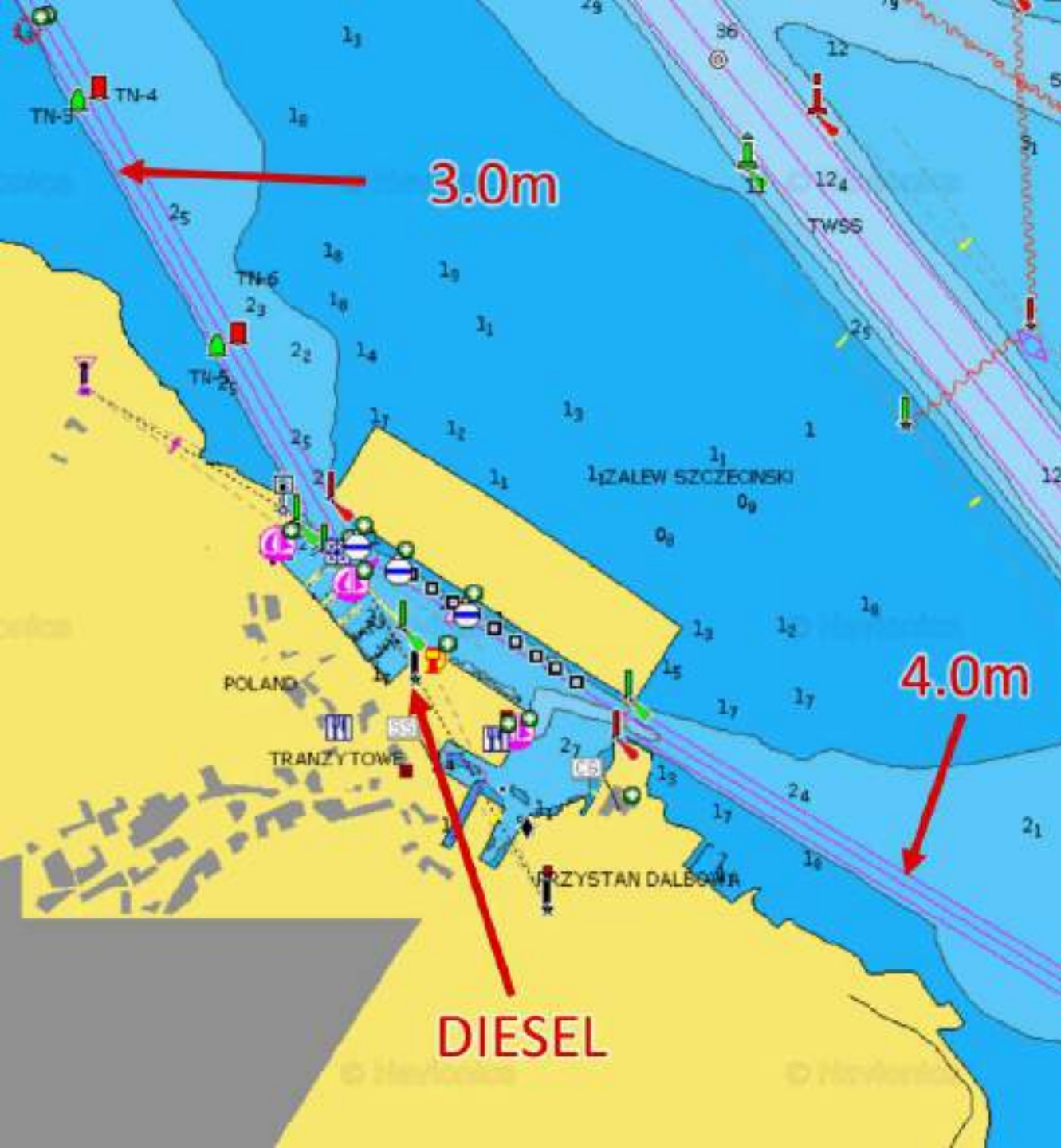
If you missed Świnoujście diesel station, you can visit **Trzebież marina**. There is another diesel station for **BCD class vessels**:

Open: Mon-Sun 09:00-18:00

Mobile: +48 665 591 771

North approach to Trzebież – 3 m

South approach to Trzebież – 4 m





# Fuel

## A class vessels

Please contact Polsteam Shipping Agency:

[agency@polsteam.com.pl](mailto:agency@polsteam.com.pl)

Tel.: +48 693 437 165

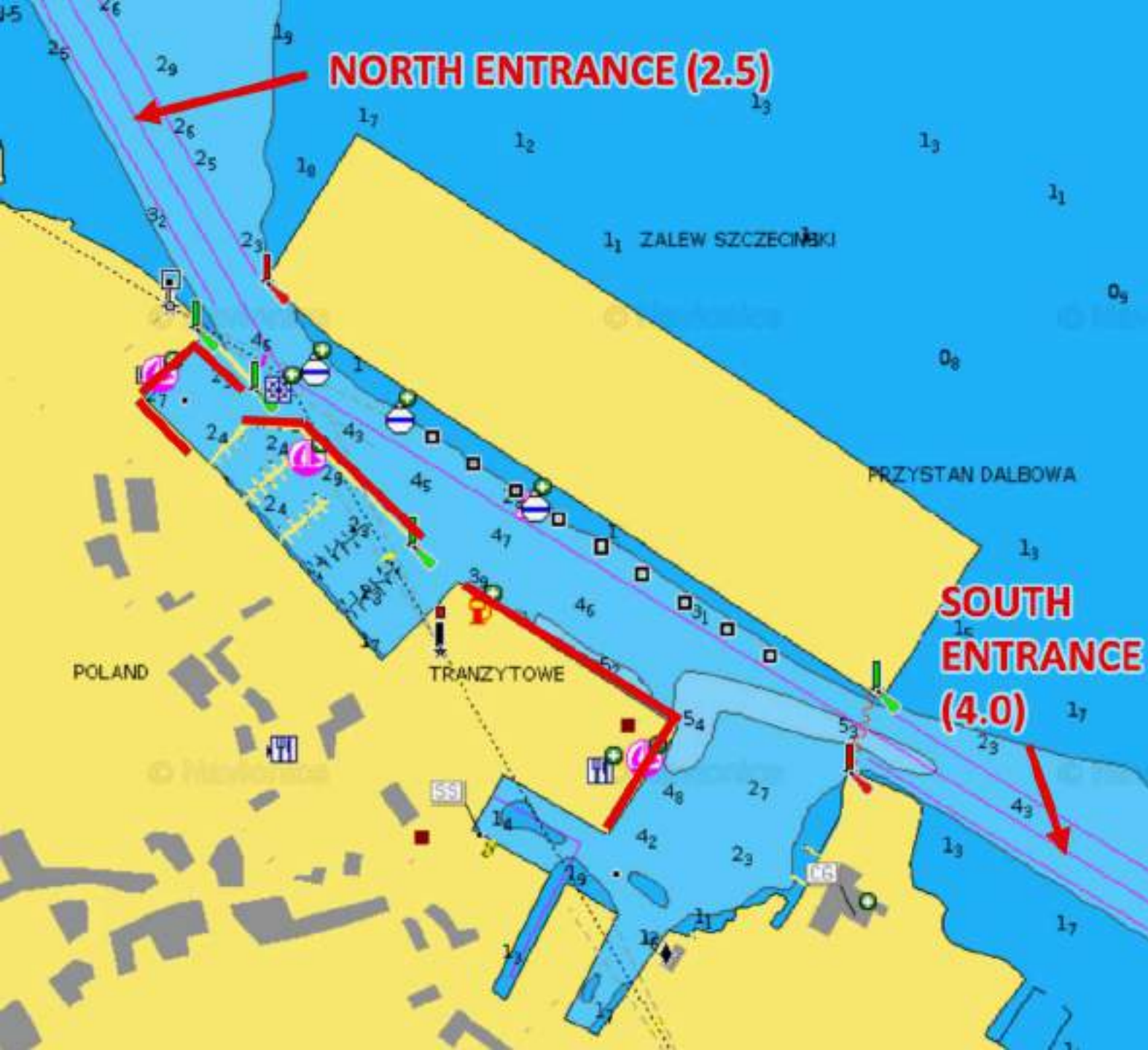
Tel.: +48 603 914 745

Tel.: +48 603 914 744

for information on bunkering possibilities in  
Szczecin port.







# STOPS

**TRZEBIEŻ**  
**(B,C,D class vessels & GŁOWACKI)**

**Contact:**  
Radosław Jamróż  
tel. +48 603 857 012  
[biuro@marinatrzebie.pl](mailto:biuro@marinatrzebie.pl)  
VHF 69

- **LOCATION: 53° 39.53'N  
014° 31.14'E**
- **1.08.2024 FREE OF CHARGE**
- **>400M OF QUAY (4M OF DEPTH)**
- **NIGHT PARTY**





  
**THE TALL SHIPS RACES**  
**Szczecin 2024**  
organized by Tall Ships International

**2-5.08.2024**

**CAPTAINS' MANUAL**





# And much more...

**CREW PROGRAMME**

**SHIP SERVICES**

**CAPTAINS' PROGRAMME**

**TOWN PLAN**

**CITY CULTURAL  
PROGRAMME**

**LIAISON SYSTEM**

**CREW SERVICES**



**Fair winds!**

**Fast sailing!**

**See you in Szczecin!**

Thank you for attention!

# **POLSTEAM SHIPPING AGENCY**



*General Agent*

*for*

**THE TALL SHIPS RACES 2024  
SZCZECIN**

## ***POLSTEAM SHIPPING AGENCY***

- ship's agency service in all Polish ports. Offices: Szczecin (Head Office), Gdynia (Branch Office for Gdynia and Gdansk ports), Swinoujscie (Harbour Office)



- freight forwarding service in All Polish Ports

- brokerage

- bunker broker

- between 2003 and 2023 quay disponent of Szczecin representative quay in Waly Chrobrego area

- ship's Agent and quay disponent for TTSR 2007, 2013, 2017, BTSR 2015 and since 2004 for Sail Szczecin events



## ***PILOT, TUG, MOORING SERVICE***

For entrance/departure Szczecin port (obligatory services are free of charge unless „private” cruises are considered):



Pilot service is compulsory for vessels with LOA above 75m.

Mooring service is compulsory for vessels with LOA 50m or more.

Tug service is compulsory for vessels with LOA 90m or more.

Additionally for entrance/departure Swinoujscie port in case only when a lay-by berth is considered (services to be paid by Party ordering same):

Pilot service is compulsory for vessels with LOA above 90m.

Mooring service is compulsory for vessels with LOA 50m or more.

Tug service is compulsory for vessels with LOA 90m or more.



## ***ETA SWINOUJSCIE ROADS NOTIFICATION***

All vessels are requested to provide ETA Swinoujście roads at least 24hours in advance.



Please contact

Polsteam Shipping Agency  
[agency@polsteam.com.pl](mailto:agency@polsteam.com.pl)

or

Mob. +48 693 437 165

Mob. +48 603 914 745

Mob. +48 603 914 744

## **ŚWINOUJSCIE ROADS ARRIVAL, ENTRANCE TO PORT**



All vessels of LOA equal or more than 20m are requested to establish contact on VHF radio with „Świnoujście Traffic” 2 hours before pilot embarkation or 15 minutes before entering a VTS area – if without a pilot.

Reports should be made to „Świnoujście Traffic” on VHF Ch. 12.

Upon Świnoujście roads arrival all vessels of LOA equal or more than 20m should get in contact with „Świnoujście Traffic” regarding permission for entrance.

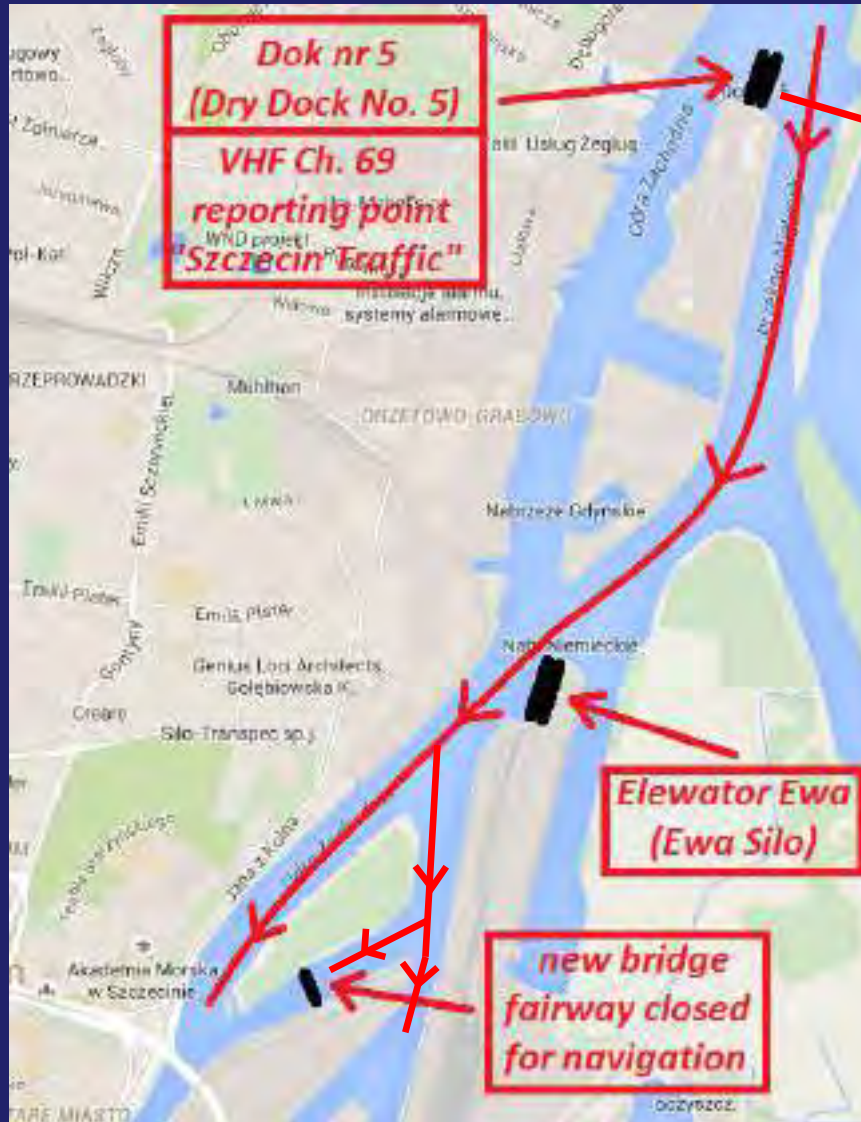
## ***ROADS ARRIVAL, ENTRANCE TO PORT***



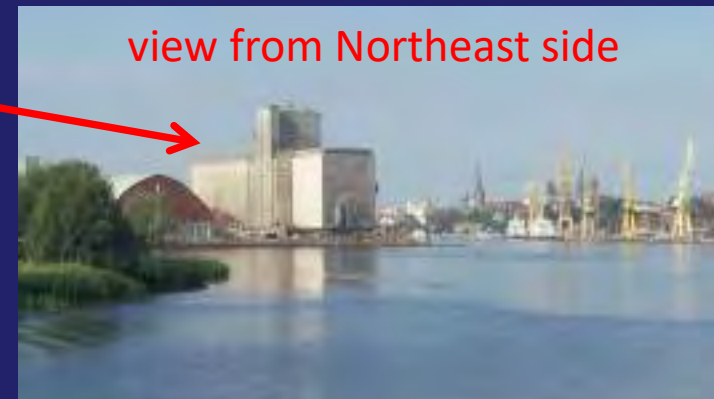
In case vessel is not allowed or cannot enter Szczecin port directly she may apply for a lay-by berth in Świnoujście port.

It will be granted unless same is occupied or terms and conditions of use not agreed.

# MANEUVERING IN SZCZECIN PORT



view from Northeast side



view from Northeast side



## **TERMS AND ORDER OF BERTHING**

It is requested to consider daylight berthing in Szczecin port.

Generally, order of vessels berthing in same nest is to be discussed between ships Captains directly unless other way requested by Port Authorities.



Special order of vessels berthing in the same nest is:

- 1/ Pogoria (Poland) then Johann Smidt (Germany)
- 2/ Kapitan Borchardt (Poland) then Grossherzogin Elisabeth (Germany) as agreed
- 3/ Helena (Finland) then HNLMS Urania (Netherlands) or Gedania (Poland)
- 4/ Generał Zaruski (Poland) or Kapitan Głowacki (Poland) then Tornado (Poland)

## ***INWARD CLEARANCE***

Upon berthing and before sailing vessels may be visited by Immigration Officers and Custom Officers for inward / outward clearance.



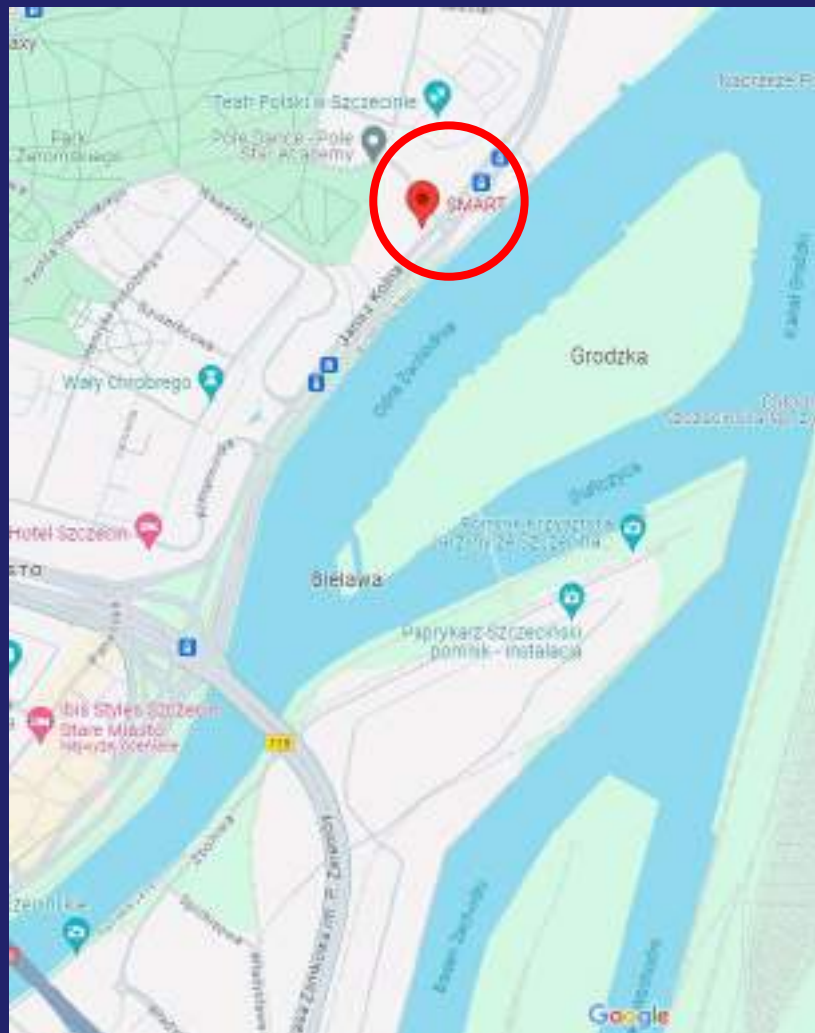
In order to arrange smooth clearance all vessels are requested to prepare following documents upon berthing / before sailing unless additional documents required (concerning ISPS vessels):

- 1 x Crew List
- 1 x Passenger List (if any)
- 1 x IMO General Declaration

It is recommended to prepare also:

- 1/ for UE crew members / passengers – identity cards
- 2/ others – valid passports / seaman's books

# OFFICE OF THE SHIP'S AGENT IN SZCZECIN



Ship's Agent Office  
—  
Sailing Equipment & Publications  
shop SMART

Mob. +48 693 437 165  
Mob. +48 603 914 745  
Mob. +48 603 914 744  
[agency@polsteam.com.pl](mailto:agency@polsteam.com.pl)

## ***SERVICES: SHORE SIDE ELECTRIC POWER***

The service is free of charge.



Vessels shall be connected to the shore power without delay if possible. In case of any questions please contact

*ship's Liaison Officer*

or

Polsteam Shipping Agency

Mob.: +48 693-437-165

Mob.: +48 603-914-745

Mob.: +48 603-914-744

[agency@polsteam.com.pl](mailto:agency@polsteam.com.pl)



## ***SERVICES: FRESH WATER DELIVERY***

The service is free of charge.



Fresh water delivery to the vessels is possible. In case of any questions please contact

*ship's Liaison Officer*

or

Polsteam Shipping Agency

Mob.: +48 693-437-165

Mob.: +48 603-914-745

Mob.: +48 603-914-744

[agency@polsteam.com.pl](mailto:agency@polsteam.com.pl)

## ***SERVICES: COLLECTION OF WASTE***

The service is free of charge.



### **Receipt of garbage:**

- from Friday the 02nd August till Monday the 05th August
- segregated garbage in bags to be placed ashore next to gangway every day till 0500am
- receipt by car between 0500am and 0630am

### **Receipt of oil waste, mixtures and sewage:**

- at least one day notice is required
- inform ship's LO or Agent till 1200am a day before the day of disposal
- receipt by truck between 0200am and 0730am
- car's suction pumps will be used to speed up rate

## ***SERVICES: BUNKERING***

The possibility of bunkering in Szczecin is limited as there is no bunker station in the area of the event and bunkering from portable tanks is strictly prohibited.



It is recommended to bunker in Świnoujście in the Marina of Basen Północny (North Basin).

Unless otherwise contracted between bunker Supplier and vessel it is possible to arrange bunkering in the event area by truck or barge provided payment method is agreed (requested in cash or pre-paid), buyer's requested documents available and enough volume ordered. A proper notice is needed.

## ***DEPARTURE FROM SZCZECIN PORT***

Sailing date is on Monday the 05th August.



Departure procedure will be announced during a meeting with Captains.

During a meeting with Captains certain departure order will be announced. During unberthing please stay in touch with quay disponents (VHF Ch. 17) and „Szczecin Traffic” (VHF Ch. 69) for smooth and safe unberthing.



# ***WE LOOK FORWARD TO SEEING YOU IN SZCZECIN***



POLSTEAM SHIPPING AGENCY SP. Z O.O.

Plac Rodła 8  
70-419 SZCZECIN

ph. +48 91 359 42 42/3 (available 24/7)  
fax +48 91 488 30 19

[agency@polsteam.com.pl](mailto:agency@polsteam.com.pl)  
[www.polsteamagency.pl](http://www.polsteamagency.pl)