

ARRIVAL TO MARIEHAMN



MRCC Turku (COSPAS-SARSAT SPOC) Maritime Assistance Services (MAS)

Type: MRCC, Country:

SRR:

Tel: **+358 2941001**

mrcc@raja.fi

View / Hide More Info

Telephone

+358 2941001 Alternate: **+358 2941000**

Email

mrcc@raja.fi

If you need any assistance when operating in the Archipelago Sea, call Turku MRCC. They are there to help you and they will coordinate all efforts to solve the situation.

Turku MRCC is available by and VHF ch. 16..

The inshore transit from Åbo/Turku to Mariehamn is included in the Archipelago VTS Area..

Vessel loa +24 m, report to VTS on VHF ch.71.

Vessel loa -24 m, Maintain watch on VHF hc.71

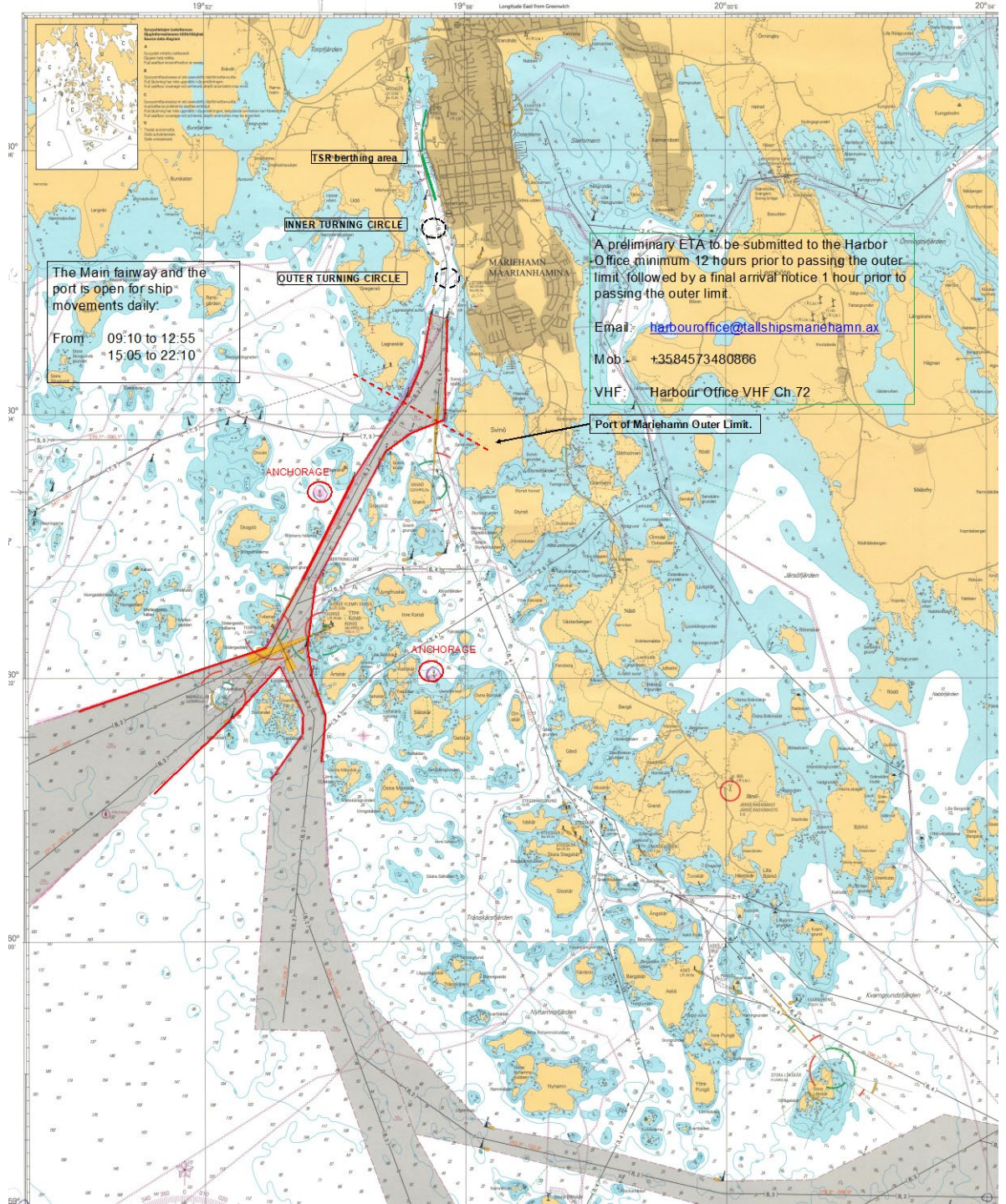
The ferry route Mariehamn – Åbo/Turku (as drawn in blue here below) is used mainly by passenger ferries running a 24/7 service between the two ports an onwards to Sweden.

At times the ferries are restricted in their maneuverability due to narrow passages and shallow waters adjacent to the fairway.

Ferry route Mariehamn - Åbo ca 85nm

Pilot Boarding Ground

In order to "spare days" within the EU, Any vessel homeported outside the European Union should consider leaving Finland at Utö and entering back into Finland at



TSR berthing area

INNER TURNING CIRCLE

OUTER TURNING CIRCLE

The Main fairway and the port is open for ship movements daily.

From 09:10 to 12:55
15:05 to 22:10

A preliminary ETA to be submitted to the Harbor Office minimum 12 hours prior to passing the outer limit, followed by a final arrival notice 1 hour prior to passing the outer limit.

Email: harbouoffice@tallshipsmariehamn.ax

Mob: +3584573480866

VHF: Harbour Office VHF Ch.72

Port of Mariehamn Outer Limit.

ANCHORAGE

ANCHORAGE

30° 45'

30° 40'

30° 35'

30° 30'

30° 25'

30° 20'

19° 55'

19° 50'

19° 45'

19° 40'

19° 35'

19° 30'

19° 25'

19° 20'

19° 15'

19° 10'

19° 05'

19° 00'

18° 55'

18° 50'

18° 45'

18° 40'

18° 35'

18° 30'

18° 25'

18° 20'

18° 15'

18° 10'

18° 05'

18° 00'

17° 55'

17° 50'

17° 45'

20° 00'

20° 05'

20° 10'

20° 15'

20° 20'

20° 25'

20° 30'

20° 35'

20° 40'

20° 45'

20° 50'

20° 55'

21° 00'

21° 05'

21° 10'

21° 15'

21° 20'

21° 25'

21° 30'

21° 35'

21° 40'

21° 45'

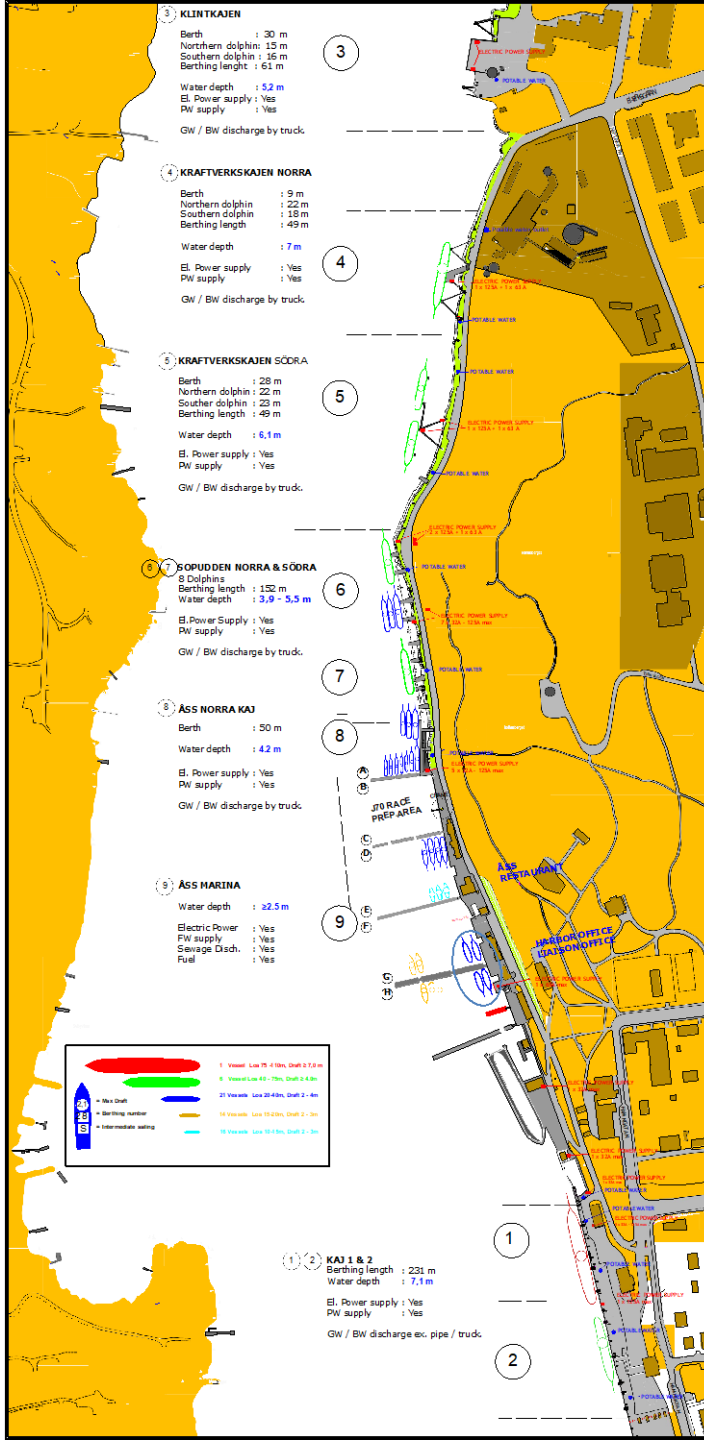
21° 50'

21° 55'

22° 00'

22° 05'

22° 10'



3 **KLINTKAJEN**
 Berth : 30 m
 Northern dolphin : 15 m
 Southern dolphin : 16 m
 Berthing length : 61 m
 Water depth : 5.2 m
 El. Power supply : Yes
 PW supply : Yes
 GW / BW discharge by truck

4 **KRAFTVERSKAJEN NORRA**
 Berth : 9 m
 Northern dolphin : 22 m
 Southern dolphin : 18 m
 Berthing length : 49 m
 Water depth : 7 m
 El. Power supply : Yes
 PW supply : Yes
 GW / BW discharge by truck

5 **KRAFTVERSKAJEN SÖDRA**
 Berth : 28 m
 Northern dolphin : 22 m
 Southern dolphin : 23 m
 Berthing length : 49 m
 Water depth : 6.1 m
 El. Power supply : Yes
 PW supply : Yes
 GW / BW discharge by truck

6 **SÖPUDDEN NORRA & SÖDRA**
 8 Dolphins
 Berthing length : 152 m
 Water depth : 3.9 - 5.3 m
 El. Power Supply : Yes
 PW supply : Yes
 GW / BW discharge by truck

8 **ASS NORRA KAJ**
 Berth : 50 m
 Water depth : 4.2 m
 El. Power supply : Yes
 PW supply : Yes
 GW / BW discharge by truck

9 **ASS MARINA**
 Water depth : 32.5 m
 Electric Power : Yes
 FW supply : Yes
 Sewage Disch. : Yes
 Fuel : Yes

1 2 **KAJ 1 & 2**
 Berthing length : 231 m
 Water depth : 7.1 m
 El. Power supply : Yes
 PW supply : Yes
 GW / BW discharge exc. pipe / truck

	1 Vessel, Loa 75-100m, Draft 2.0-2.5m
	2 Vessel, Loa 40-75m, Draft 2.0-2.5m
	3 Vessel, Loa 20-40m, Draft 2-4m
	4 Vessel, Loa 15-20m, Draft 2-3m
	5 Vessel, Loa 10-15m, Draft 2-3m
	6 Max Draft
	7 Berthing number
	8 Intermediate setting