

# ADVANCE NOTICE

(Version 1.4)

Information for Captains and Vessel Operators



## THE TALL SHIPS RACES 2021

<b>KLAIPEDA</b>	<b>27 – 30 JUNE</b>
<b>TURKU</b>	<b>05 – 08 JULY</b>
<b>TALLINN</b>	<b>15 – 18 JULY</b>
<b>MARIEHAMN</b>	<b>22 – 25 JULY</b>
<b>SZCZECIN</b>	<b>31 JULY – 03 AUGUST</b>



#### OFFICIAL DATES

<b>KLAIPEDA</b>	<b>27 – 30 June</b>
	<b>RACE 1</b>
<b>TURKU</b>	<b>05 – 08 July</b>
	<b>CRUISE-IN-COMPANY</b>
<b>TALLINN</b>	<b>15 – 18 July</b>
	<b>RACE 2</b>
<b>MARIEHAMN</b>	<b>22 – 25 July</b>
	<b>RACE 3</b>
<b>SZCZECIN</b>	<b>31 JULY – 03 August</b>

**ADVANCE NOTICE**  
**SAIL TRAINING INTERNATIONAL**  
**THE TALL SHIPS RACES 2021**  
**(27 June – 3 August)**

Thank you for entering The Tall Ships Races 2021. We look forward to seeing you next summer.

This Advance Notice is to provide owners, vessel operators and Masters/Captains with information about the plans made so far for The Tall Ships Races 2021 and associated events. It will be updated from time to time and each version is dated at time of publication. Please ensure you have the latest version. Further information is available at [www.tallshipsraces.com](http://www.tallshipsraces.com) and will be issued by Sail Training International in the “**Arrival Arrangements**” document, which will be posted on the website approximately six weeks before the start of the Race Series.

Each host port will also produce a detailed Captains’ Manual, which will be available on the Captains’ Page of the website here <http://www.sailtraininginternational.org/vessels/captains-page>, and a printed copy will be given to each vessel in port.

If you require any other information, please do not hesitate to contact us. If this is your first Tall Ships Race and you wish to have more detailed advice, we would be happy to put you in contact with an experienced vessel operator from your country, who would be willing to talk things through with you.

**The following files can be downloaded from the Captains’ Page on our website at [www.sailtraininginternational.org/vessels/captains-page](http://www.sailtraininginternational.org/vessels/captains-page)**

1. The current edition of the Racing & Sailing Rules
2. Crew List Form (EXCEL spreadsheet)
3. Vessel Life Saving Appliance Check List
4. Sail Training International Memorandum on Safety

Owners and Captains/Masters **MUST** read these documents to help them prepare for this year’s Races.

#### **GENERAL INQUIRIES**

If you have any queries, or need further information, please contact: -

Laura Blyth-Brown  
Office Administrator  
Sail Training International  
Charles House  
Gosport Marina  
Mumby Road  
Gosport  
Hampshire  
PO12 1AH, UK

Tel: + 44 (0) 23 9258 6367  
Fax: + 44 (0) 23 9258 4661  
E-mail: [laura.blythbrown@sailtraininginternational.org](mailto:laura.blythbrown@sailtraininginternational.org)

## **RACING & SAILING RULES 2021**

The latest edition of the Racing & Sailing Rules and Special Regulations will be available to download from the **Captains' Page** on our website: [www.sailtraininginternational.org/vessels/captains-page](http://www.sailtraininginternational.org/vessels/captains-page) in due course.

Race One (Klaipeda to Turku), Race Two (Tallinn to Mariehamn), and Race Three (Mariehamn to Szczecin), are designated as Category 2 in accordance with Rule 2.02 of the Racing and Sailing Rules 2021.

All vessels are required to have an active AIS transponder on board.

**Participants are urged to make sure they study and use the Current Edition of the Racing & Sailing Rules and Special Regulations.**

## **SAIL TRAINING INTERNATIONAL RULE OF RATING AND RACE PRIZES**

Each registered vessel will be issued with a Rating Certificate which will be calculated by Sail Training International's unique Rule of Rating which ensures that all vessels will be able to race equally on corrected time. All new vessels to The Tall Ships Races will be provided with a Measurement Form which will need to be completed in advance.

Trophies will be awarded for first, second and third places per class on corrected time, and for first on elapsed time (line honours) and overall, on corrected time for each race leg. There will be many other special prizes for competing vessels, including for the best crew in the crew parade. Vessels from all classes competing in all race legs will be eligible for the overall race series prizes.

The principal award will be The Tall Ships Races 2021 Friendship Trophy which will be awarded to the vessel which, in the opinion of the competing captains and crews, has contributed the most to international understanding and friendship.

## **RACE POSITION REPORTING AND MARINE COMMUNICATIONS EQUIPMENT**

For safety reasons, and to help the interest of the young crews during a race, Sail Training International organises a twice-daily radio schedule. Vessels' positions are passed over the radio and logged by the communications vessel. The corrected placings are then re-broadcast so that they may be plotted for all on board to see. Results and charts showing the fleet's positions are also posted onto the race websites at [www.tallshipsraces.com](http://www.tallshipsraces.com).

**Full Sailing and Communications Instructions are to be collected by Captains/Masters on arrival, from the Sail Training International Race Office in Klaipeda for Race 1, in Tallinn for Race 2 and in Mariehamn for Race 3.**

Radio schedules will be conducted either on MF, VHF, or satellite phone. The MF frequency used will be 4146 KHz. The VHF frequency used will normally be channel 77. Any change to these frequencies will be notified in due course. Race starts are normally conducted on VHF channel 77. Please note that a VHF radio and type approved 406 MHz EPIRB are compulsory for these races.

## SATELLITE TRANSPONDERS

Sail Training International will again provide participants with a 'YellowBrick/YB' satellite transponder for The Tall Ships Races 2021. There will be no charge to the participating vessels but the 'YellowBrick/YB' transponder will be the responsibility of the Captain/Master until they return it to Sail Training International at the end of the last race that they participate in. Captains/Masters will need to sign to this effect.

We hope that everyone will appreciate the significant benefits that this scheme brings to vessel operators and their sponsors, as well to the crews and their family and friends ashore who wish to follow their vessel's progress.

For more information about the 'YellowBrick/YB' satellite transponder, please go to: [www.ybtracking.com](http://www.ybtracking.com)

## CREW CHANGES

Vessel operators and Captains/Masters are reminded that the social programmes in each of the four ports are designed to a similar pattern [see "Draft Port Programmes"]. The main crew activities - sports, prize-giving, and crew party – **are usually held on the second day** of the official port dates.

In order to allow a vessel's trainee crew to gain maximum benefit from the social programme and, in particular, to take part in the prize-giving and crew party which follows it, **it is strongly recommended that crew changes are conducted on the third day of the official port dates.**

Many vessels do this already and crew changes often take place in the very early hours of day three. Our experience is that trainees who have to leave their vessel before the prize-giving and crew party feel they are being deprived of an important part of the whole "experience" and would much prefer to have the chance to stay for those events, even if it means having to travel late at night or early in the morning. For 2021 the recommended crew change dates are:

**Klaipeda – Tuesday 29 June; Turku – Wednesday 7 July; Tallinn – Saturday 17 July; Mariehamn – Saturday 24 July; Szczecin – Monday 2 August**

## CRUISE-IN-COMPANY: TURKU, FINLAND TO TALLINN, ESTONIA

A Cruise-in-Company is planned between Turku, in Finland, and Tallinn, in Estonia giving ships the chance to visit some guest harbours between the two ports. These guest harbours are busy working to welcome the fleet with the best they have to offer. The Cruise-in-Company brochure will be found at the Captains' Page on our website: [www.sailtraininginternational.org/vessels/captains-page](http://www.sailtraininginternational.org/vessels/captains-page) next spring.

## VESSEL LIFE SAVING APPLIANCES INSPECTIONS (rule 12.2.1)

All vessels will be required to conform to the Sail Training International Special Regulations in the Racing & Sailing Rules and Special Regulations, Current Edition. The Vessel Life Saving Appliances Report form **MUST** be completed prior to each race and signed by the Captain/Master and presented to the STI Race Office within 12 hours after the official start of the port event (see draft port programmes). Sail Training International will endeavour to inspect all vessels before the Race start.

## VISAS

### Visa Requirements for Lithuania, Finland, Estonia, Åland Islands and Poland

Individual race entrants are responsible for ascertaining what visas or other documents will be required by their ship's company when arriving in Lithuania, Finland, Estonia, Åland Islands and Poland and to obtain such visas themselves. Captains/Masters should note that ships or crew originating from any EU and Schengen countries<sup>Note1</sup> do not need visas to visit any of this year's ports. However, they are advised to check that individual crew members conform to this requirement. Lists of countries whose citizens do require visas can be obtained from any of the host ports.

*Note 1:* The Schengen countries are: Austria, Belgium, Czech Republic, Denmark, Estonia, Finland, France, Germany, Greece, Hungary, Iceland, Italy, Latvia, Lithuania, Luxembourg, Malta, The Netherlands, Norway, Poland, Portugal, Slovakia, Slovenia, Spain, Sweden and Switzerland. All these countries except Norway and Iceland are European Union members.

Please be aware that Russian ships will have to contact the relevant countries' consulates since they will need visas for entering the Schengen area.

### DIPLOMATIC CLEARANCE – Government and Military Vessels

Both, government, and military vessels taking part in the Races will need diplomatic clearance to enter foreign territorial waters. A diplomatic clearance is to be sent via diplomatic channels (**NB: For FINLAND - via one's embassy in Finland**). Captains/Masters, of government and military vessels are reminded to make sure that the period of time they have applied for takes into account the possibility of their vessel finishing the Race early and arriving in port outside the published official port dates. They are also advised to ensure that they have clearance for the Cruise-in-Company area of sailing and intended visit ports.

### FRONTIERS CONTROL

**Please note the following: -**

- In addition to individual visa requirements, Captains/Masters must send a complete crew list to the port authorities before departing the previous port.
- The Crew list must identify crew members embarking after the vessel entered the Schengen Area and also those expected to disembark at the next port.
- Non-EU crew must have verifiable evidence of a flight or other travel plans to leave the EU to be allowed to disembark the vessel.
- Ships leaving the Schengen area must inform authorities about their next destination before departing the previous port.
- Minors must travel with written parental authorization. Please note; airline companies can refuse the embarking of a minor without such documentation.
- Whilst citizens from Schengen countries can travel carrying national ID cards, but it is strongly recommended to travel with a passport.

Specific guidelines about frontiers control will be included in the Arrival Arrangements, and any guidelines would be in accordance with EU and national requirements. Any update about visas and frontiers control will be posted on the Captains' Page.

## **CLASS A**

### **SHIP OPENING TIMES TO THE PUBLIC**

The Tall Ships Races usually attract hundreds of thousands of visitors during the festivities in the host ports, and there is often huge interest in visiting ships. It is therefore greatly appreciated if ships would open their decks to the public.

Whilst it remains at the discretion of the Captain/Master to decide ship opening times, ports have suggested that the following times would be appropriate for ships to be opened to the public:

Klaipeda	Times between 1000 and 2100
Turku	Times between 1000 and 2100
Tallinn	Times between 1000 and 2100
Mariehamn	Times between 1000 and 2100
Szczecin	Times between 1000 and 2100

## **COVID-19**

### **PREPARATIONS AND REQUIREMENTS**

Sail Training International and our Host Port partners are committed to providing safe harbours and port events for trainees, staff, volunteers, vessel operators, partners, and visitors alike. As a result, detailed scenario planning has been developed to cover all likely eventualities within each port.

### **PORT ACTION WITH REGARD TO COVID-19**

Host ports will be operating according to the municipalities COVID-19 regulations in place at the time. In addition, they will undertake detailed preparations to help ensure COVID safe transfer for embarking and disembarking Trainees and Crew. These will be made available in good time prior to the event.

### **VESSEL ACTION WITH REGARD TO COVID-19**

All vessels will be expected to provide their COVID protocols to the ports in advance and may also be requested to provide evidence that suitably acceptable tests have been carried out.

Sample Vessel protocols can be accessed and downloaded from: -

<https://sailtraininginternational.org/sailtraining/covid-19-ship-operations-library/>

The username and password to the link has been sent to your email with subject title: -  
Vessel COVID Protocol Library.

For up-to-date information on COVID-19 regulations and statistics within each port, please use the following links: -

**Klaipeda COVID-19 links: -**

<https://koronastop.lrv.lt/en/>

**Turku COVID-19 links: -**

Finnish institute for health and welfare: -

<https://thl.fi/en/web/infectious-diseases-and-vaccinations/what-s-new/coronavirus-covid-19-latest-updates/situation-update-on-coronavirus>

South-West Finland, Turku University Hospital: -

<https://www.vsshp.fi/en/Pages/default.aspx>

Finnish border guard: -

<https://raja.fi/en/covid19-info>

Finnish national broadcasting company YLE: -

[https://yle.fi/uutiset/osasto/news/coronavirus\\_latest\\_death\\_toll\\_hits\\_800\\_vaccine\\_acceptance\\_growing\\_herd\\_immunity\\_likely\\_in\\_september/11249610](https://yle.fi/uutiset/osasto/news/coronavirus_latest_death_toll_hits_800_vaccine_acceptance_growing_herd_immunity_likely_in_september/11249610)

**Tallinn COVID-19 links: -**

[COVID-19 crisis webpage | official info \(kriis.ee\)](#)

**Mariehamn COVID-19 links (translation available in English): -**

[ÅHS samlade information om coronapandemin | Ålands hälso- och sjukvård \(ahs.ax\)](#)

**Szczecin COVID-19 links: -**

<https://www.gov.pl/web/coronavirus>

We remain available at any time should you have any queries. Please contact: -

[office@sailtraininginternational.org](mailto:office@sailtraininginternational.org)

Race Directorate & COVID-19 Working Group



## **Changes to The Tall Ships Races 2021 Upper Age Limit**

The Board of Tall Ships Races International have decided to make an exception to the Upper Age Rule for The Tall Ships Races 2021 in the Baltic Sea. There will be no upper age limit for race legs during the event.

Vessels will be able to enter all legs of the event with a crew composition of any age over 15 years. As with all our Races and Regattas, we continue to encourage you to maintain a youth focus when recruiting trainees.

To ensure that trainees have the best experience possible we ask ships to make it clear in their marketing to trainees if their crews will include:

- Trainees aged 15-25
- A mixture of trainees 15-25 and older ages
- Only older ages

We hope that this concession for 2021 only will assist vessels in recruiting a full complement of trainees for each voyage.

## DRAFT PORT PROGRAMMES

**KLAIPEDA**                      **27 to 30 June**

**PLEASE NOTE: All vessels must arrive by the deadline of 1200 on Sunday 27 June and take part in the Parade of Sail on Wednesday 30 June.**

### **Sunday 27 June**

1200	Deadline for participating vessels to be in port
1400 - 1500	Opening ceremony
1700 - 2100	Tall ships open for visitors
1600	Crew activities
2000	Captains' Dinner

### **Monday 28 June**

1000 - 2100	Tall ships open for visitors
1000 - 1600	Crew activities
1800	Crew Parade
1830 - 1900	Prize Giving Ceremony
2000 - 2200	Crew Party

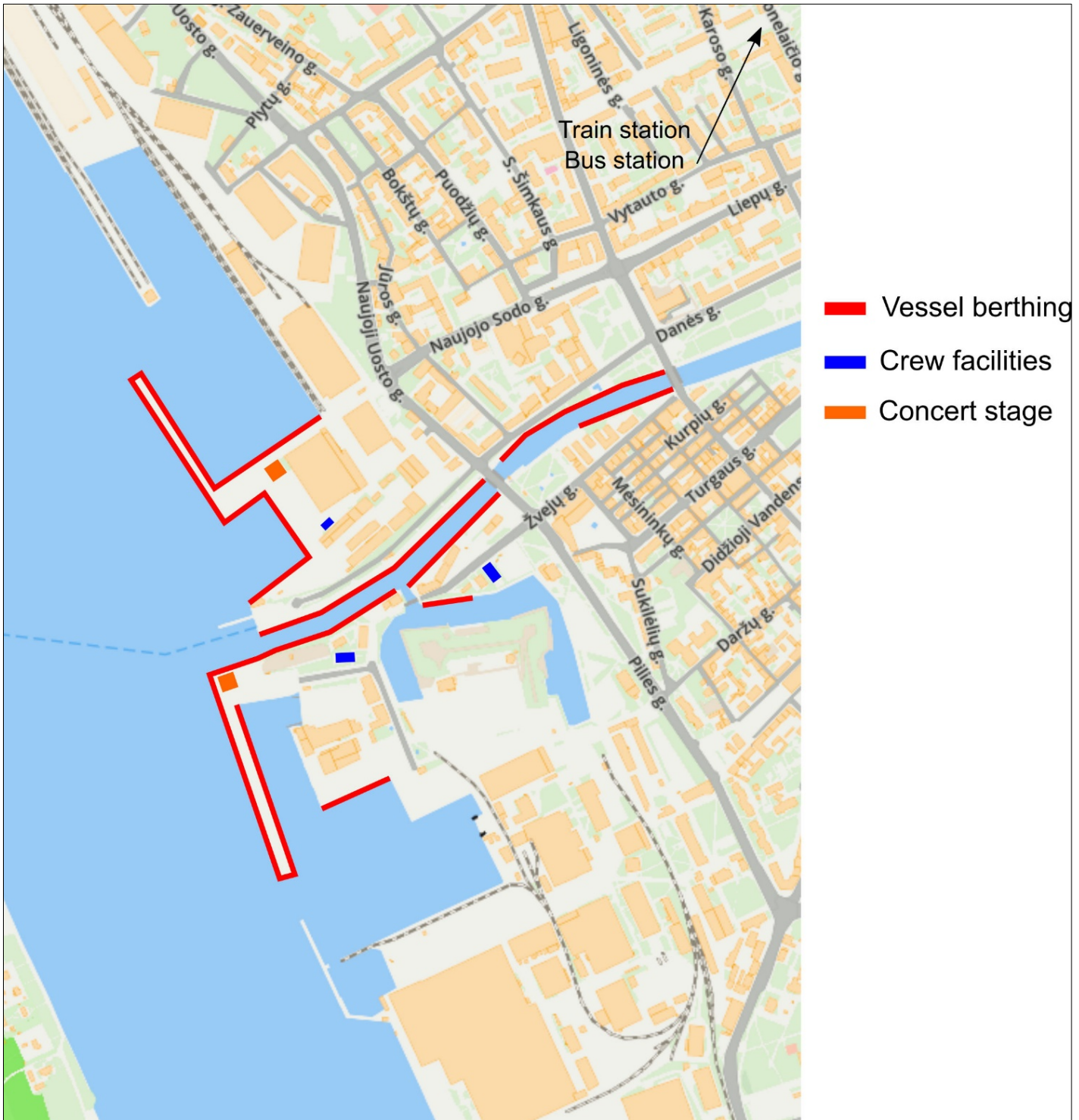
### **Tuesday 29 June**

1000 - 2100	Tall ships open for visitors
1000 - 1700	Crew activities
1300 - 1400	Captains' Briefing

### **Wednesday 30 June**

TBC	Official Start of Fleet Undocking
TBC	Parade of Sail
TBC	Race Start

# KLAIPEDA BERTHING AREA



**TURKU**      **5 – 8 July**

**PLEASE NOTE: All vessels must arrive by the deadline of 1200 on Monday 5 July and take part in the Parade of Sail on Thursday 8 July.**

**Monday 5 July**

	The last ships arrive in the morning
1000 - 2400	Event Area open
<b>1200</b>	<b>Deadline for participating vessels to be in port</b>
1200 - 1700	Crew Activities: Tours in the Turku Castle
1400 - 1600	Crew activities: Walking Tours
1400	Opening ceremony
TBC	Tall ships open for visitors
2000	Captains' Dinner

**Tuesday 6 July**

1000 - 2400	Event Area open
1000 - 1300	Crew activities: Sports Competitions
TBC	Tall ships open for visitors
1600	Crew Parade
1700	Prize Giving Ceremony
1900	Crew Party

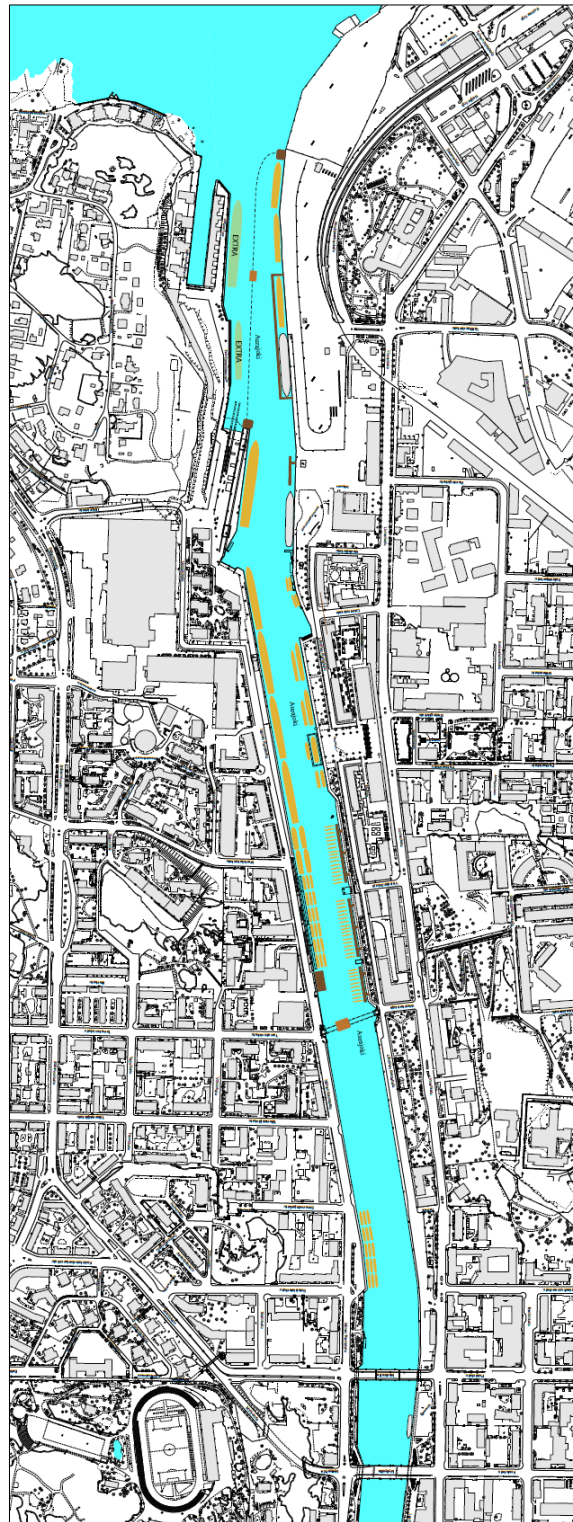
**Wednesday 7 July**

1000 - 2400	Event Area open
1000 - 1400	Crew activities: Walking Tours
1200 - 1700	Crew Activities: Tours in the Turku Castle
TBC	Crew Activities: Asahi
TBC	Tall ships open for visitors
1600	Captains' Briefing

**Thursday 8 July**

1000	Event Area open
TBC	Official Start of Fleet Undocking
TBC	Parade of Sail

## TURKU BERTHING AREA



## CRUISE IN COMPANY

A Cruise-in-Company will take place from Turku between 8 and 15 July. Further details will be announced on the Captains' Page of the website in Spring.

**TALLINN****15 – 18 July**

**PLEASE NOTE: All vessels must arrive by the deadline of 1200 on Thursday 15 July and take part in the Parade of Sail on Sunday 18 July.**

**Thursday 15 July**

	The last ships arrive in the morning
1000 - 2100	Event areas open to public
1200	Deadline for participating vessels to be in port
1600 - 1700	Opening ceremony
1700 - 1800	Opening concert for crews
1400 - 2100	Tall ships open for visitors
1400 - 1900	Crew activities
1900 - 2200	Captains' Dinner

**Friday 16 July**

0900 - 2300	Event Area open
1000 - 2100	Tall ships open for visitors
1000 - 1400	Crew activities
1500 - 1530	Crew Parade
1530 - 1630	Prize Giving Ceremony
1900 - 2400	Crew Party

**Saturday 17 July**

1000 - 2300	Event Area open
1000 - 1900	Tall ships open for visitors
1000 - 1500	Crew activities
1600	Captains' Briefing

**Sunday 18 July**

0900 - 1800	Event Area open
0900 - 1100	Official Start of Fleet Undocking
1100 - 1300	Parade of Sail
TBC	Race Start



**MARIEHAMN 22 – 25 July**

**PLEASE NOTE: All vessels must arrive by the deadline of 1200 on Thursday 22 July and take part in the Parade of Sail on Sunday 25 July.**

**Thursday 22 July**

	The last ships arrive in the morning
1000 - 2400	Event Area open
1200	Deadline for participating vessels to be in port
TBC	Tall ships open for visitors
1600	Opening ceremony
1600	Crew activities
1830	Captains' Dinner

**Friday 23 July**

1000 - 2400	Event Area open
TBC	Tall ships open for visitors
1000	Crew activities
1530	Crew Parade
1700	Prize Giving Ceremony
1830	Crew Party

**Saturday 24 July**

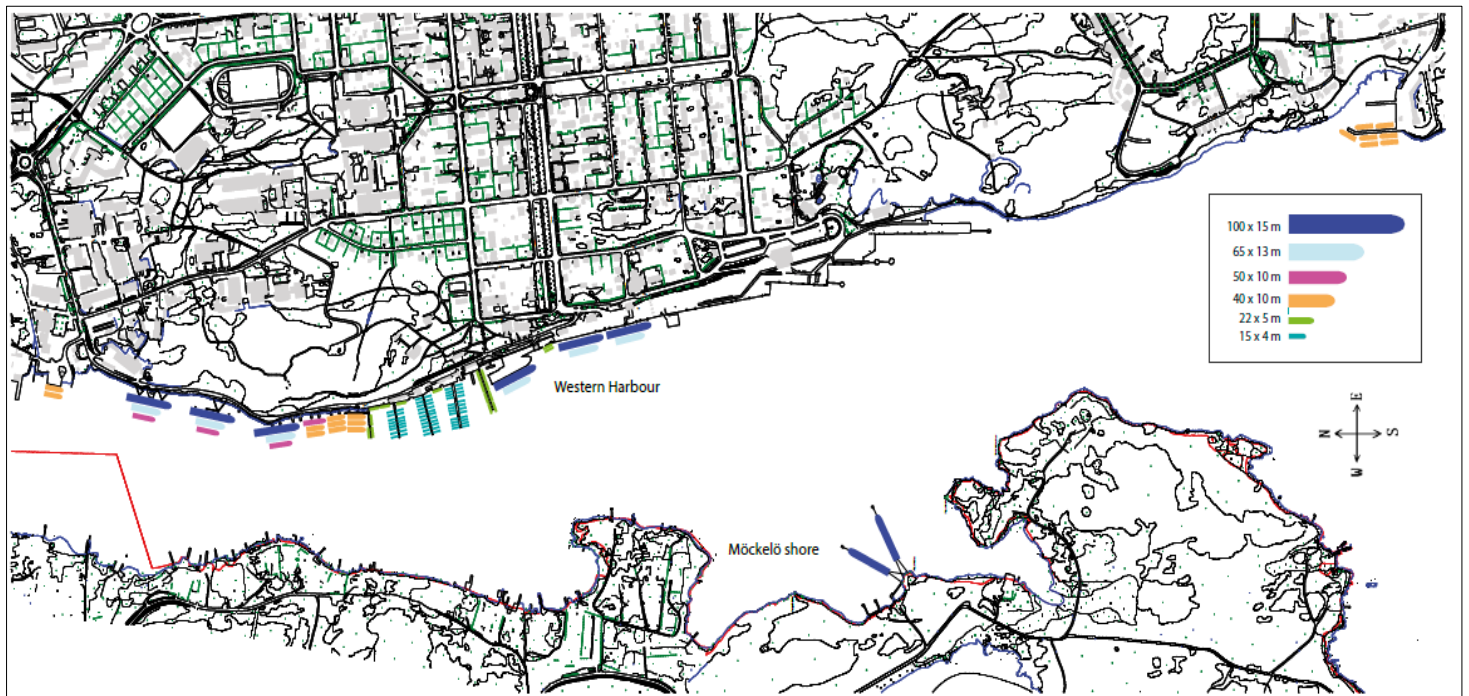
1000 - 2400	Event Area open
TBC	Tall ships open for visitors
1000	Crew activities
1600	Captains' Briefing

**Sunday 25 July**

0700	Official Start of Fleet Undocking
1000 - 1700	Event Area open
TBC	Parade of Sail
TBC	Race Start



## MARIEHAMN BERTHING AREA



### Mooring plan Port of Mariehamn

The Port of Mariehamn is located on the southern part of Åland. It is one of Finland's three largest ports for passenger vessels, and regarding number of international cruise ship calls the Port of Mariehamn is the second largest in Finland.

When providing the mooring plan for Tall Ships Races 2021 we will consider a lot of factors such as: length, depths and

freeboard, requests from the ships captains, rig construction, requests on day-sailing, open deck and deck events and we will try to mix nationalities of the fleet. We will also take into account the sail-parade and the availability of the number of pilots.

In the Port of Mariehamn double berthing is necessary. Traditionally the tall ships were moored like this during summer when they laid in wait in the 1920's and 1930's.

This mooring plan is made based upon the fleet as seen in Turku during TSR2017.

If there is a need to have ships moored along the Möckelö shore, there will of course be service available with shuttle boats. It is also possible to moore in the Eastern Harbour, just a kilometer short walk from the Western Harbour through the cozy town centre.

**SZCZECIN**

**31 July – 3 August**

**PLEASE NOTE: All vessels must arrive by the deadline of 1200 on Saturday 31 July and take part in the Parade of Sail on Tuesday 3 August.**

**Saturday 31 July**

	The last ships arrive in the morning
0900	Event Area open
1200	Deadline for participating vessels to be in port
1400	Tall ships open for visitors
1500	Crew activities
1600	Opening ceremony
2000	Captains' Dinner

**Sunday 1 August**

0800	Event Area open
1000	Tall ships open for visitors
1000	Crew activities
1600	Crew Parade
1715	Prize Giving Ceremony
2000	Crew Party

**Monday 2 August**

0800	Event Area open
1000	Tall ships open for visitors
1000	Crew activities
1600	Captains' Briefing

**Tuesday 3 August**

0700	Event Area open
0700	Official Start of Fleet Undocking
1400	Parade of Sail

SZCZECIN BERTHING AREA



6 April 2021

**DRAFT COURSES - Please note that the Race Committee reserve the right to change these race courses**

**NOTE**

The courses given below are **provisional** and may be changed. Confirmation will be given during the Captains' Briefing in each race start port and will also be published in the SAILING & COMMUNICATIONS INSTRUCTIONS which Captains/Masters collect from the Sail Training International Race Office in Klaipeda for Race 1, Tallinn for Race 2 and Mariehamn for Race 3.

<b>The Tall Ships Races 2021 - Race One Klaipeda to Turku (30 June – 5 July)</b>		
Race Start Area Wednesday 30 June	55° 44 N 020 55 E	
WP 1	56° 52 N 018 04 E	To Port
WP 2	57° 31 N 018 00 E	To Port
WP 3	58° 38 N 019 03 E	To Port
Finish Area	59° 39 N 021 22 E	

<b>Cruise-in-Company Turku to Tallinn (8 – 14 July)</b>
The Cruise-in-Company between Turku and Tallinn is being organised in collaboration with STA Finland. Several Guest Ports will be planned, which will provide free designated berthing and other facilities. More details to follow in Spring.

<b>The Tall Ships Races 2021 - Race Two Tallinn to Mariehamn (18 – 22 July)</b>		
Race Start Area Sunday 18 July	59 35.737 N 024 19 E	
WP 1	59 46 N 024 04 E	To Port
WP 2	59 34 N 022 09 E	To Port
WP 3	58 42 N 020 19 E	To Starboard
Finish Area	59 31 N 020 33 E	

<b>The Tall Ships Races 2021 - Race Three Mariehamn to Szczecin (25 – 31 July)</b>		
Race Start Area Sunday 25 July	60 00 N 019 40 E	
Finish Area	54 51 N 015 08 E	

## SHIPS' MAIL

The addresses below are the official addresses for any mail being sent during the Races either to a vessel or an individual crew member on board. When addressing mail to anyone in the fleet it is imperative that the **NAME OF THE VESSEL** is clearly stated.

### KLAIPEDA

Fleet's last full day in port: Tuesday 29 June

Name of Individual

**Name of Vessel**

The Tall Ships Races Klaipeda 2021

**Public institution "Klaipėdos šventės"**

Str. Turgaus 22-8

Klaipėda 91249

Lithuania

### TURKU

Fleet's last full day in port: Wednesday 7 July

The City of Turku

The Tall Ships Races 2021 Turku

**Name of the vessel**

**Name of the Individual**

P.O. Box 355

20101 Turku

Finland

### TALLINN

Fleet's last full day in port: Saturday 17 July

Name of individual

**Name of vessel**

The Tall Ships Races Tallinn 2021

Vabaduse väljak 10

Tallinn.

EE10146

Estonia

### MARIEHAMN

Fleet's last full day in port: Saturday 24 July

Name of individual

**Name of vessel**

The Tall Ships Races Mariehamn 2021

PB 28, 22 101 Mariehamn

Åland Finland

### SZCZECIN

Fleet's last full day in port: Monday 2 August

Name of individual

**Name of vessel**

Tall Ships Races Szczecin 2021

Centrum Żeglarskie

19 Przestrzenna Street

70-800 Szczecin

Poland

## CREW TRAVEL – KLAIPEDA Arrival/Transfer Information

### By Air:

Nearest airport - **Palanga International Airport**. It is situated 25 km away from Klaipeda.

More information on available services visit website [www.palanga-airport.lt/en/](http://www.palanga-airport.lt/en/)

**Kaunas airport** is in the suburbs of Kaunas and it is 212 km away from Klaipeda.

More information on available services visit website [www.kaunas-airport.lt/en/](http://www.kaunas-airport.lt/en/)

The largest airport in Lithuania - **Vilnius International Airport**. The distance from Klaipeda to the airport is 312 km.

More information on available services visit website [www.vno.lt/en/](http://www.vno.lt/en/)

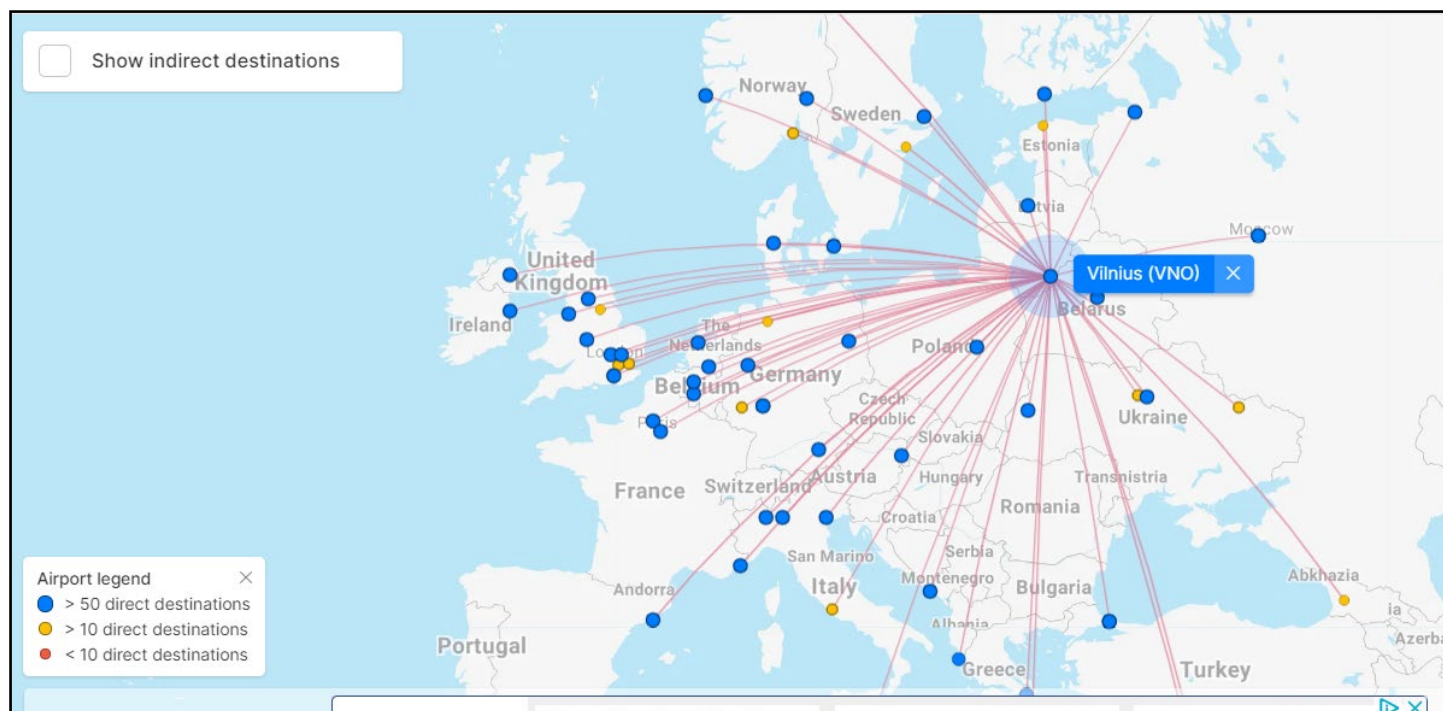
There are coach connections from Vilnius and Kaunas airports to Klaipeda city. The journey time accordingly takes from 2.5 hours to 3.5 hours and the cost of a one-way ticket is up to 20 €

More information on the express coach connections <https://www.ollex.lt/en>

Flights from / to Klaipeda (Palanga PLQ): [flightconnections.com]



Flights from / to Vilnius (VNO): [flightconnections.com]



### By Ferry:

The International Ferry Terminal is situated 18 km away from the city centre or within 40 minutes' drive by taxi or bus.

Regular passenger ferry lines connect to Kiel (Germany), Karlshamn (Sweden).

More information: [www.dfds.com/en-gb/passenger-ferries](http://www.dfds.com/en-gb/passenger-ferries)

### By Coach:

Klaipeda bus station is situated 15 minutes' walk from the centre of the town.

More information: [www.klap.lt/en/bus-station/](http://www.klap.lt/en/bus-station/)

### By Train:

Klaipeda Train station is situated next to the Bus station.

More information: <https://www.litrail.lt/en/home>

## **CREW TRAVEL – TURKU Arrival/Transfer Information**

### **Useful Websites:**

<https://www.turku.fi/en>

<https://www.visitturku.fi/en/visit-turku-en/turku-environs/getting-around>

<https://www.visitturku.fi/en/visit-turku-en/tourists/tourist-information>

### **By Air:**

Turku International Airport is in the south-west of Finland, just 8km North of the center of Turku. Airlines operating to and from Turku include AirBaltic <http://www.airbaltic.com>, WizzAir <https://wizzair.com>, Finnair <http://www.finnair.fi>, SAS <http://www.flysas.com>.

For more information visit their website at:

<https://www.finavia.fi/en/airports/turku>

There are fast and frequent plane connections to Turku from Helsinki, Stockholm, Riga, Mariehamn, Krakow, Skopje, Kaunas and Gdansk.

The local bus, number 1 runs frequently from the airport to the city center. The timetables can be found at the airport, or from the local bus website <https://www.foli.fi/en>.

Taxis are on call at the taxi stand in front of the terminal during the scheduled arrival times. There is a free hotline for booking a taxi near the entrance of the terminal. If you wish to confirm a ride or you have special requests, you can book a taxi before arriving at the airport. The journey time to Turku is 20 min, the best is to agree about the fare when getting on the car. For more information visit:

<https://www.finavia.fi/en/airports/turku/parking-access/taxis>

Helsinki-Vantaa airport offers an international gateway from all parts of the world.

For more information visit their website at <https://www.finavia.fi/en/airports/helsinki-airport>

There are frequent coach connections from the Helsinki-Vantaa airport to Turku city center. The journey time is approximately 2.5 hours and the cost of a one-way ticket approximately 25€.

Tampere-Pirkkala airport offers connections to Finland from Stockholm, Copenhagen, Frankfurt, London, Dublin, Riga, Bremen, and Milan.

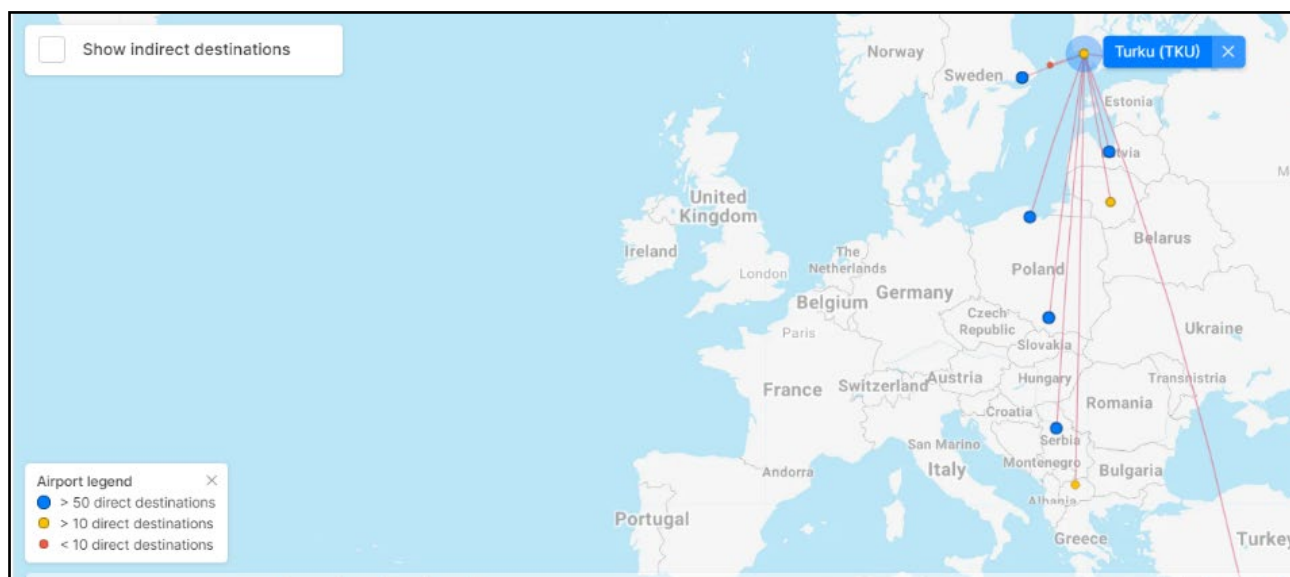
For more information, visit their website at <https://www.finavia.fi/en/airports/tampere-pirkkala>

There are frequent local bus connections from the Tampere airport to the center of Tampere and direct express coach connections to Helsinki. The journey time from the center of Tampere to the center of Turku by train or coach is approximately 2-2.5 hours.

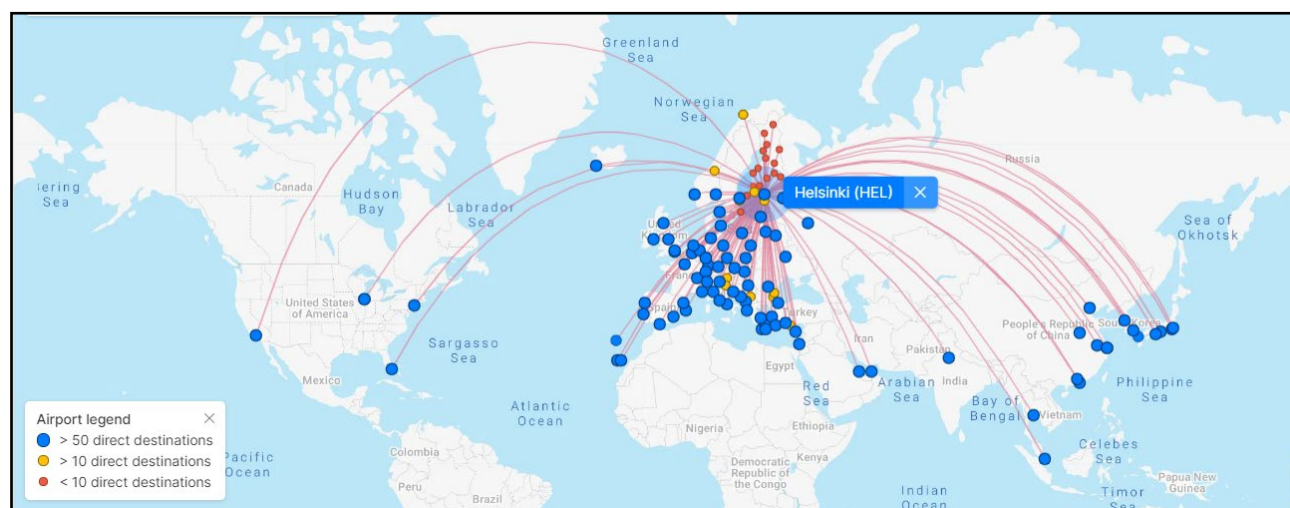
Because of COVID-19, many airlines have changed their schedule, so please check the current situation and limitations from the airlines.



Flights from / to Turku (TKU): [flightconnections.com]



Flights from / to Turku Helsinki (HEL): [flightconnections.com]



### By Train:

Intercity train services run from major towns to Turku central station. There are also two other train stations in Turku - the Kupittaa station and the station at the port of Turku. The journey time from Helsinki or Tampere is approximately 2 hours and the cost of a one-way ticket is approximately 25-30 €.

The central train station is located very near the city center, approximately a fifteen-minute walk from the market square. There are local bus stops in front of the station building. The train station is connected to the harbour area by local bus via the market square. For more information visit <https://www.vr.fi/en>

**By Coach:**

Well-equipped long-distance buses offer extensive connections to Turku from all parts of Finland. The services from Helsinki city center and Helsinki-Vantaa airport run every half an hour and the services from Tampere city center approximately every hour. The journey time to Turku from Helsinki or Tampere is approximately 2.5 hours and the cost of a one-way ticket approximately 22-27 €.

The Turku long-distance bus station is located very near the city center, approximately a ten-minute walk from the market square. There is a local bus connection (bus number 1) from the bus station to the harbor area. Visit <https://www.matkahuolto.fi/en> and <https://www.onnibus.com/home> for more information.

**By Road:**

Turku is easily accessible from other major towns by road, e.g. the E18 motorway from Helsinki, the E63 highway from Tampere and the E8 highway from Rauma and Pori. The journey time from Helsinki or Tampere is approximately 2 hours.

**By Sea:**

The port of Turku is located at the mouth of the river Aura, which runs through the city of Turku. To get to the port the passenger travels through a breathtakingly unique archipelago with some 20,000 islands and islets. The Silja Line and Viking Line passenger terminal buildings are at the far end of Linnankatu approx. 3.6km from the city centre opposite the island of Ruissalo. There is a local bus connection (bus number 1) from the terminals to the city center and to the riverbank.

**Contact information:**

Port of Turku  
Linnankatu 90, FIN-20100 TURKU  
[turkuport@port.turku.fi](mailto:turkuport@port.turku.fi)  
Tel. +358 (0)2 267 4111

**Useful websites:**

<https://www.portofturku.fi/en/port-and-turku/>  
<http://www.tallinksilja.com/>  
<http://www.vikingline.fi>

## CREW TRAVEL – TALLINN Arrival/Transfer Information

Tallinn is the Capital of Estonia and is situated on the northern coast of the country. Tallinn is a easy location to get to as there is Airport in the city, ferry connections to Finland, Sweden. For all the Tall Ships Races 2021 crews the local public transport (busses and trams) is for free.

### Useful Websites:

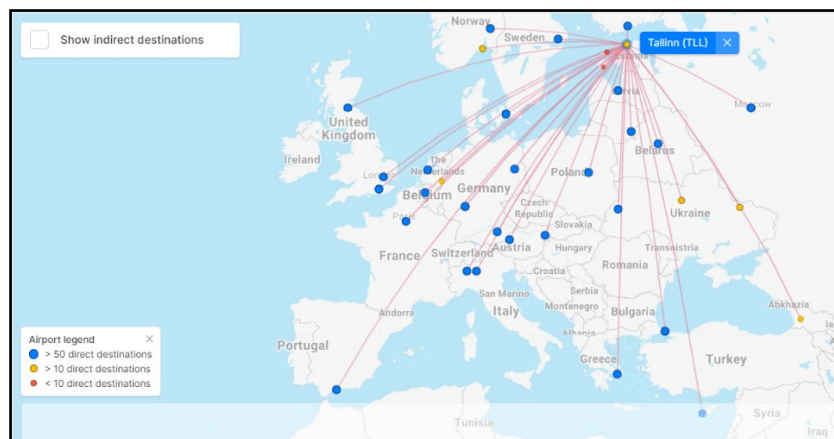
<https://visittallinn.ee/eng/visitor>

<https://www.visitestonia.com/en/>

### By Air:

Tallinn Airport is in the city and is about 5 km from the city Centre and harbours and has great tram connection that will take the crews directly from Airport to Harbour. Tallinn Airport has many direct connections all over Europe and if there is no direct flight then it is easy to transfer through Helsinki, Riga, or Stockholm. <https://www.tallinn-airport.ee/>  
[How to travel from airport to harbour](#)

Flights from / to Tallinn (TLL): [[flightconnections.com](http://flightconnections.com)]



### By Ferry:

Port of Tallinn has one of the busiest ferry connections in Europe. There are direct ferry's to Helsinki multiple time a day and once a day ferry to Stockholm. The Tall Ships Races 2021 fleet is berthed in the Port of Tallinn, Seaplane harbour and Noblessner Marine, so all vessels are within walking distance from the ferries.

<https://www.ts.ee/en/departures/>

<https://www.tallink.ee/>

<https://www.sales.vikingline.com/>

<https://www.eckeroline.com/>

### By Bus:

Tallinn has good Bus connections to all the neighbouring countries and most of Eastern and Central EU. The Bus station is about 4 km from the harbour and can be accessed by public transport tram.

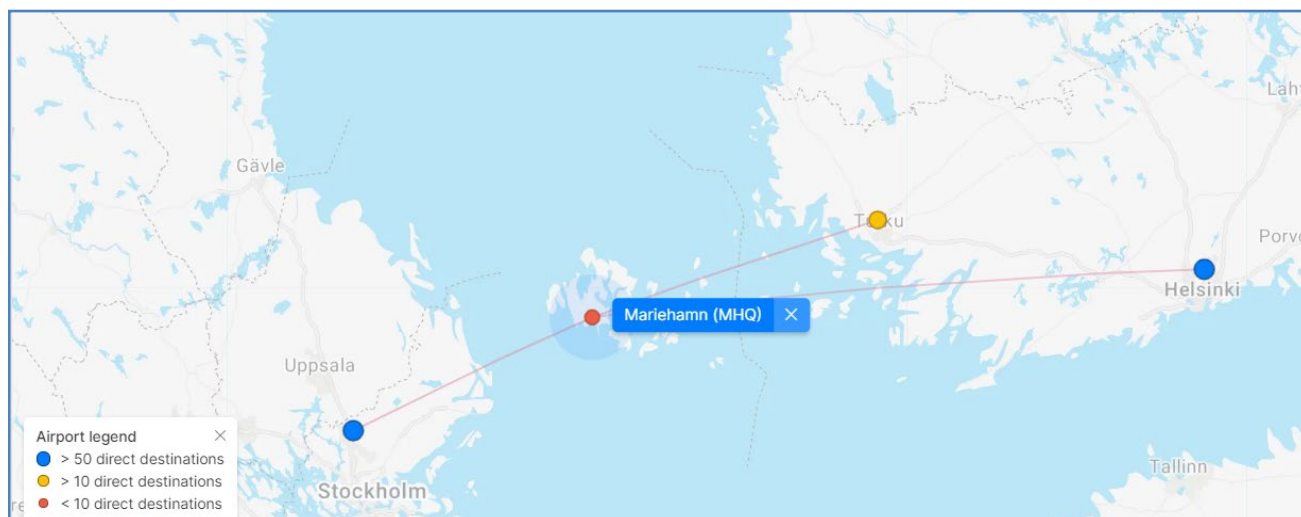
<https://luxexpress.eu/en/>

[Tram route to harbour](#)

## CREW TRAVEL – MARIEHAMN (ÅLAND ISLANDS) Arrival/Transfer information

### By Air:

Flights from / to Mariehamn (MHQ): [flightconnections.com]



Located just outside the city is Mariehamn airport. To the airport can you arrive from Finland or Sweden. From the airport can you either take a taxi to the center of Mariehamn or take a 4 km walk in soothing surroundings.

### Useful website:

[www.finavia.fi/en/airports/mariehamn](http://www.finavia.fi/en/airports/mariehamn)

### By Ferry:

The Åland Islands have several harbors and a regular ferry traffic. You can arrive to Åland with ferry from Finland, Sweden and Estonia. Depending on which ferry line you choose will you arrive either to the central harbor in Mariehamn or to Långnäs or Grisslehamn. From Långnäs and Grisslehamn do you travel by regular coaches to Mariehamn.

### Useful websites:

[www.vikinline.ax](http://www.vikinline.ax)

[www.eckerolinjen.ax](http://www.eckerolinjen.ax)

[www.tallinksilja.fi](http://www.tallinksilja.fi)

We also recommend following page for as a single point of contact for your overall travel arrangements to Åland: [www.axtours.ax](http://www.axtours.ax)

## CREW TRAVEL – SZCZECIN Arrival/Transfer information

### By Air:

Szczecin's airport is called Szczecin-Goleniow (SZZ) and is placed about 40 km away from the city. It has basic connections to principal Polish cities (incl. Warsaw) and to other countries.

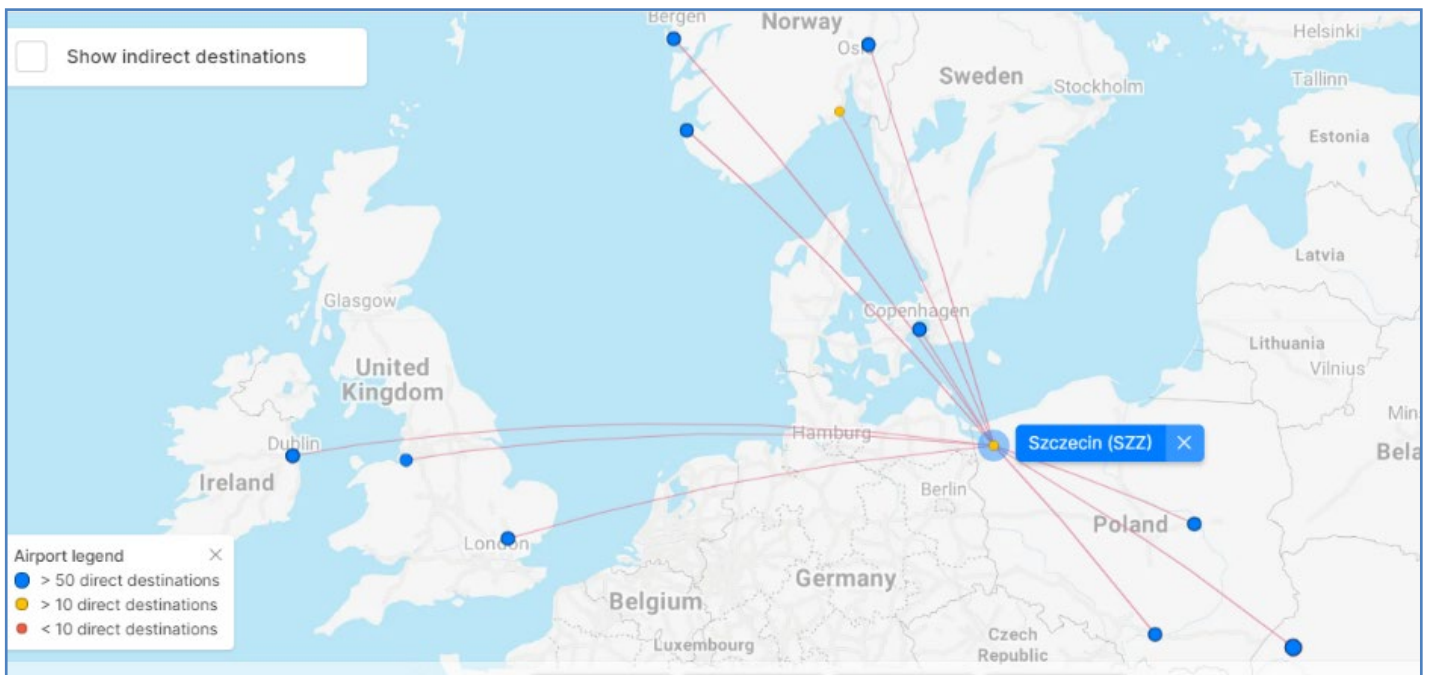
Visit <http://www.airport.com.pl/en> for more airport information.

There is a shuttle and train service to and from Szczecin airport. The railway terminal is situated next to the airport and a trip from Szczecin takes about 40 minutes. The train will take you to and from Szczecin and Kołobrzeg.

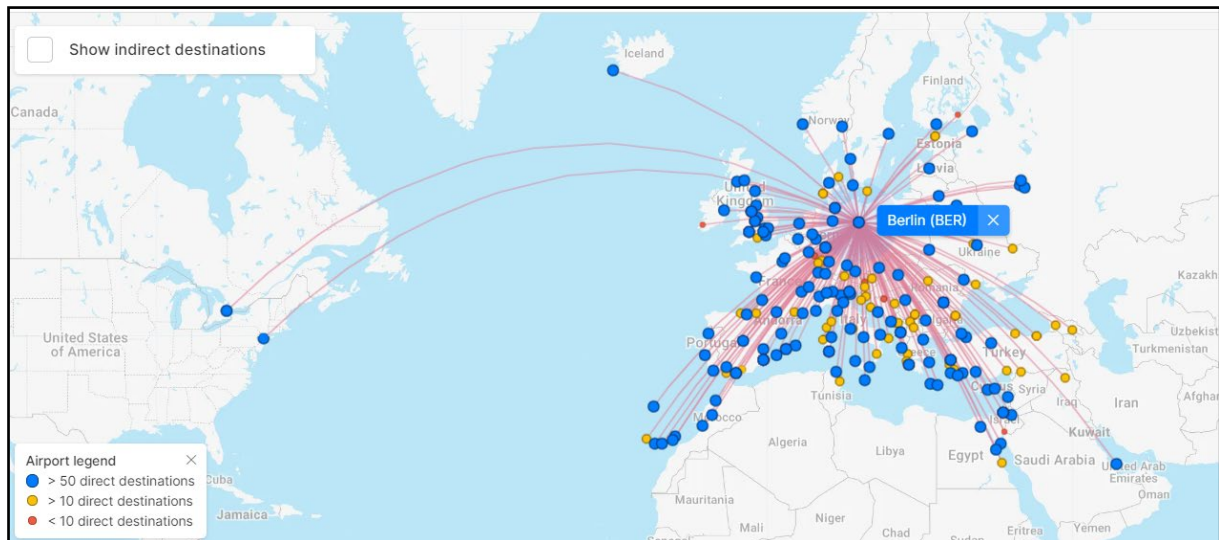
For more information visit <http://www.airport.com.pl/en/transport-and-parking/>

The other airport which is the closest to Szczecin is Berlin Brandenburg airport ([www.berlin-airport.de/](http://www.berlin-airport.de/)) which provides most European and worldwide connections. There is shuttle service to/from Szczecin <http://www.berlinia.net/en/>, [http://pksszczecin.info/przewozy\\_pasazerskie.php](http://pksszczecin.info/przewozy_pasazerskie.php) and train service <https://www.interrail.eu/en>

Flights from / to Szczecin (SZZ): [flightconnections.com]



Flights from / to Berlin (BER): [flightconnections.com]



### By Train:

Szczecin has two main railway stations: Szczecin Główny (Szczecin Central) – networks to and from here cover the north-western to south-western part of the city and Szczecin Dąbie covers the north-eastern to south-eastern part, although both are located on the same railway line. From both stations passengers can go all over Poland and abroad (Germany). There are local, region and express trains with abundant daily arrivals and departures. For more information visit <https://www.interrail.eu/en>

### By Road:

Highway A6 (European Route E28 and E65) connect Szczecin with Berlin (West) and Swinoujście (North – ferries to Sweden and Denmark) and Poznań, Warsaw (South-East) and Wrocław (South). In this part of Poland, they are toll free. The general speed limit is 90 km/h, highways 140 km/h and urban area 50 km/h - but it is imperative to check the road signs and drive with the correct speed. Headlights must always be switched on. Seat belts are compulsory (front and rear). Mobile phones may be used only with a headset/hands-free system while driving. Web services for drivers: <https://www.gddkia.gov.pl/en/27/about-directorate>

### Public Transport in Szczecin:

Buses and tramways connect every city district and enables fast and safe communication. Some of the routes connect neighbourhood communes and villages. There are daytime bus (including express buses) and tram lines and night lines (buses only). Every line has its own detailed schedule. Every stop has info about passing lines and detailed schedule. The stops in the city centre have electronic displays giving time elapsed to next bus or tram.

Schedule: <https://www.zditm.szczecin.pl/en/passenger/timetables,by-line?setlang=en>

Maps of the routes: <https://www.zditm.szczecin.pl/en/passenger/network-maps?setlang=en>

**Important information: all crew members can use all kinds of public transport in Szczecin for free.**

### Contact information:

Jerzy Raducha  
Centrum Turku, 19 Przestrzenna Street  
70-800 Szczecin, Poland  
[j.raducha@centrumzeglarskie.pl](mailto:j.raducha@centrumzeglarskie.pl)  
Mob: +48 601 086 465

## FUTURE RACES, FESTIVALS AND EVENTS

### 2021 The Tall Ships Races



Klaipeda, Lithuania	Sun 27 to Wed 30 June	Race 1
Turku, Finland	Mon 5 to Thurs 8 July	Cruise-in-Company
Tallinn, Estonia	Thurs 15 to Sun 18 July	Race 2
Mariehamn, Åland Islands	Thurs 22 to Sun 25 July	Race 3
Szczecin, Poland	Sat 31 July to Tues 3 August	

### 2021 The Tall Ships Races Magellan-Elcano 500 Series 2021



Falmouth, UK	Tues 17 to Thurs 19 August	Race 1
A Coruña, Spain	Thurs 26 to Sun 29 August	Cruise-in-Company
Lisbon, Portugal	Thurs 2 to Sun 5 Sept	Race 2
Cádiz, Spain	Thurs 9 to Sun 12 Sept	

### 2021 SCF White Sails of Peace Tall Ships Regatta



Port in South Korea TBC	Tues 10 to Fri 13 August TBC	Race 1
Nanao, Japan	Fri 20 to Mon 23 August	Race 2
Vladivostok, Russia	Mon 30 August to Sun 5 Sept	

### 2022 The Tall Ships Races



Esbjerg, Denmark	Thurs 7 to Sun 10 July	Race 1
Harlingen, The Netherlands	Thurs 14 to Sun 17 July	Cruise-in-Company
Antwerp, Belgium	Fri 22 to Mon 25 July	Race 2
Aalborg, Denmark	Thurs 4 to Sun 7 August	

**2023**

## **The Tall Ships Races**



**The Tall Ships Races 2023 will take place in North West Europe.**

**Ports and dates will be announced in Spring 2021.**



**CAPTAINS' / MASTERS' NOTES:**





