

# ADVANCE NOTICE

(Version 1.0)

Information for Captains and Vessel Operators



## THE TALL SHIPS RACES

Magellan-Elcano  Series 2021

FALMOUTH	17 – 19 AUGUST
A CORUÑA	26 – 29 AUGUST
LISBON	02 – 05 SEPTEMBER
CÁDIZ	09 – 12 SEPTEMBER



#### OFFICIAL DATES

<b>FALMOUTH</b>	<b>17 – 19 August</b>
	<b>RACE 1</b>
<b>A CORUÑA</b>	<b>26 – 29 August</b>
	<b>CRUISE-IN-COMPANY</b>
<b>LISBON</b>	<b>02 – 05 September</b>
	<b>RACE 2</b>
<b>CÁDIZ</b>	<b>09 – 12 September</b>

**ADVANCE NOTICE**  
**SAIL TRAINING INTERNATIONAL**  
**THE TALL SHIPS RACES MAGELLAN-ELCANO 500 SERIES 2021**  
**(17 August – 12 September)**

Thank you for entering The Tall Ships Races Magellan-Elcano 500 Series 2021. We look forward to seeing you this summer.

This Advance Notice is to provide owners, vessel operators and Masters/Captains with information about the plans made so far for The Tall Ships Races Magellan-Elcano 500 Series 2021 and associated events. It will be updated from time to time and each version is dated at time of publication. Please ensure you have the latest version. Further information is available at [www.tallshipsraces.com](http://www.tallshipsraces.com) and will be issued by Sail Training International in the “**Arrival Arrangements**” document, which will be posted on the website approximately six weeks before the start of the Race Series.

Each host port will also produce a detailed Captains’ Manual, which will be available on the Captains’ Page of the website here <http://www.sailtraininginternational.org/vessels/captains-page>, and a printed copy will be given to each vessel in port.

If you require any other information, please do not hesitate to contact us. If this is your first Tall Ships Race and you wish to have more detailed advice, we would be happy to put you in contact with an experienced vessel operator from your country, who would be willing to talk things through with you.

**The following files can be downloaded from the Captains’ Page on our website at [www.sailtraininginternational.org/vessels/captains-page](http://www.sailtraininginternational.org/vessels/captains-page)**

1. The current edition of the Racing & Sailing Rules
2. Crew List Form (EXCEL spreadsheet)
3. Vessel Life Saving Appliance Check List
4. Sail Training International Memorandum on Safety

Owners and Captains/Masters **MUST** read these documents to help them prepare for this year’s Races.

#### **GENERAL INQUIRIES**

If you have any queries, or need further information, please contact: -

Laura Blyth-Brown  
Office Administrator  
Sail Training International  
Charles House  
Gosport Marina  
Mumby Road  
Gosport  
Hampshire  
PO12 1AH, UK

Tel: + 44 (0) 23 9258 6367  
Fax: + 44 (0) 23 9258 4661  
E-mail: [laura.blythbrown@sailtraininginternational.org](mailto:laura.blythbrown@sailtraininginternational.org)

## **RACING & SAILING RULES 2021**

The latest edition of the Racing & Sailing Rules and Special Regulations will be available to download from the **Captains' Page** on our website: [www.sailtraininginternational.org/vessels/captains-page](http://www.sailtraininginternational.org/vessels/captains-page) in due course.

Race One (Falmouth to A Coruña), is designated as Category 1. Race Two (Lisbon to Cádiz), is designated as Category 2; in accordance with Rule 2.02 of the Racing and Sailing Rules 2021.

All vessels are required to have an active AIS transponder on board.

**Participants are urged to make sure they study and use the Current Edition of the Racing & Sailing Rules and Special Regulations.**

## **SAIL TRAINING INTERNATIONAL RULE OF RATING AND RACE PRIZES**

Each registered vessel will be issued with a Rating Certificate which will be calculated by Sail Training International's unique Rule of Rating which ensures that all vessels will be able to race equally on corrected time. All new vessels to The Tall Ships Races will be provided with a Measurement Form which will need to be completed in advance.

Trophies will be awarded for first, second and third places per class on corrected time for Classes A, and B and combined for Classes C & D, and for first on elapsed time (line honours) and overall, on corrected time for each race leg. There will be many other special prizes for competing vessels, including for the best crew in the crew parade. Vessels from all classes competing in all race legs will be eligible for the overall race series prizes.

The principal award will be The Tall Ships Races Magellan-Elcano 500 Series 2021 Friendship Trophy which will be awarded to the vessel which, in the opinion of the competing captains and crews, has contributed the most to international understanding and friendship.

## **RACE POSITION REPORTING AND MARINE COMMUNICATIONS EQUIPMENT**

For safety reasons, and to help the interest of the young crews during a race, Sail Training International organises a twice-daily radio schedule. Vessels' positions are passed over the radio and logged by the communications vessel. The corrected placings are then re-broadcast so that they may be plotted for all on board to see. Results and charts showing the fleet's positions are also posted onto the race websites at [www.tallshipsraces.com](http://www.tallshipsraces.com).

**Full Sailing and Communications Instructions are to be collected by Captains/Masters on arrival, from the Sail Training International Race Office in Falmouth for Race 1 and in Lisbon for Race 2.**

Radio schedules will be conducted either on MF, VHF, or satellite phone. The MF frequency used will be 4146 KHz. The VHF frequency used will normally be channel 77. Any change to these frequencies will be notified in due course. Race starts are normally conducted on VHF channel 77. Please note that a VHF radio and type approved 406 MHz EPIRB are compulsory for these races.

## SATELLITE TRANSPONDERS

Sail Training International will again provide participants with a YB satellite transponder for The Tall Ships Races Magellan-Elcano 500 Series 2021. There will be no charge to the participating vessels but the YB transponder will be the responsibility of the Captain/Master until they return it to Sail Training International at the end of the last race that they participate in. Captains/Masters will need to sign to this effect.

We hope that everyone will appreciate the significant benefits that this scheme brings to vessel operators and their sponsors, as well to the crews and their family and friends ashore who wish to follow their vessel's progress.

For more information about the YB satellite transponder, please go to: [www.ybtracking.com](http://www.ybtracking.com).

## CREW CHANGES

Vessel operators and Captains/Masters are reminded that the social programmes in each of the three ports of A Coruña, Lisbon and Cádiz are designed to a similar pattern [see "Draft Port Programmes"]. The main crew activities - sports, prize-giving, and crew party – **are usually held on the second day** of the official port dates.

In order to allow a vessel's trainee crew to gain maximum benefit from the social programme and, in particular, to take part in the prize-giving and crew party which follows it, **it is strongly recommended that crew changes are conducted on the third day of the official port dates.**

Many vessels do this already and crew changes often take place in the very early hours of day three. Our experience is that trainees who have to leave their vessel before the prize-giving and crew party feel they are being deprived of an important part of the whole "experience" and would much prefer to have the chance to stay for those events, even if it means having to travel late at night or early in the morning. For 2021 the recommended crew change dates are:

**\*Falmouth – Tuesday 17 August; A Coruña – Saturday 28 August; Lisbon – Sunday 4 September; Cádiz – Saturday 11 September.** (\* Please note that it might be advisable to change crew before arrival in Falmouth in a port that is better connected.)

## CRUISE-IN-COMPANY: A CORUÑA, SPAIN TO LISBON, PORTUGAL

A Cruise-in-Company is planned between A Coruña, and Lisbon giving ships the chance to visit a couple of guest harbours between the two ports. The arrangements for the Cruise-in-Company will be published on the Captains' Page on our website: [www.sailtraininginternational.org/vessels/captains-page](http://www.sailtraininginternational.org/vessels/captains-page) in the spring.

## VESSEL LIFE SAVING APPLIANCES INSPECTIONS (rule 12.2.1)

All vessels will be required to conform to the Sail Training International Special Regulations in the Racing & Sailing Rules and Special Regulations, Current Edition. The Vessel Life Saving Appliances Report form MUST be completed prior to each race and signed by the Captain/Master and presented to the STI Race Office within 12 hours after the official start of the port event (see draft port programmes). Sail Training International will endeavour to inspect all vessels before the Race start.

## **VISAS**

### **Visa Requirements for the United Kingdom, Spain, and Portugal**

Individual race entrants are responsible for ascertaining what visas or other documents will be required by their ship's company when arriving in the United Kingdom, Spain, and Portugal and to obtain such visas themselves. Captains/Masters should note that ships or crew originating from any EU and Schengen countries<sup>Note1</sup> do not need visas to visit any of this year's ports. However, they are advised to check that individual crew members conform to this requirement. Lists of countries whose citizens do require visas can be obtained from any of the host ports.

*Note 1:* The Schengen countries are: Austria, Belgium, Czech Republic, Denmark, Estonia, Finland, France, Germany, Greece, Hungary, Iceland, Italy, Latvia, Lithuania, Luxembourg, Malta, The Netherlands, Norway, Poland, Portugal, Slovakia, Slovenia, Spain, Sweden, and Switzerland. All these countries except Norway and Iceland are European Union members.

Please be aware that Russian ships will have to contact the relevant countries' consulates since they will need visas for entering the Schengen area.

### **DIPLOMATIC CLEARANCE – Military Vessels**

Military vessels taking part in the Races will need diplomatic clearance to enter foreign territorial waters. Captains/Masters, of military vessels are reminded to make sure that the period of time they have applied for takes into account the possibility of their vessel finishing the Race early and arriving in port outside the published official port dates. They are also advised to ensure that they have clearance for the Cruise-in-Company area of sailing and intended visit ports.

## **FRONTIERS CONTROL**

### **Please note the following: -**

- In addition to individual visa requirements, Captains/Masters must send a complete crew list to the port authorities before departing the previous port.
- The Crew list must identify crew members embarking after the vessel entered the Schengen Area and also those expected to disembark at the next port.
- Non-EU crew must have verifiable evidence of a flight or other travel plans to leave the EU to be allowed to disembark the vessel.
- Ships leaving the Schengen area must inform authorities about their next destination before departing the previous port.
- Minors must travel with written parental authorization. Please note; airline companies can refuse the embarking of a minor without such documentation.
- Whilst citizens from Schengen countries can travel carrying national ID cards, but it is strongly recommended to travel with a passport.

Specific guidelines about frontiers control will be included in the Arrival Arrangements, and any guidelines would be in accordance with EU and national requirements. Any update about visas and frontiers control will be posted on the Captains' Page.

## **CLASS A**

### **SHIP OPENING TIMES TO THE PUBLIC**

The Tall Ships Races usually attract hundreds of thousands of visitors during the festivities in the host ports, and there is often huge interest in visiting ships. It is therefore greatly appreciated if ships would open their decks to the public if Covid-19 restrictions allow.

Should Covid-19 restrictions allow in port it remains at the discretion of the Captain/Master to decide ship opening times, ports have suggested that the following times would be appropriate for ships to be opened to the public:

A Coruña	Times between 1000 and 2100
Lisbon	Times between 1000 and 2100
Cádiz	Times between 1000 and 2100

### **COVID-19**

#### **PREPARATIONS AND REQUIREMENTS**

Sail Training International and our Host Port partners are committed to providing safe events for trainees, staff, volunteers, vessel operators, partners, and visitors alike. As a result, detailed scenario planning has been developed to cover likely eventualities within each port.

#### **PORT ACTION WITH REGARD TO COVID-19**

Host ports will be operating according to the municipalities COVID-19 regulations in place at the time. In addition, they will undertake detailed preparations to help ensure COVID safe transfer for embarking and disembarking Trainees and Crew whatever the level of COVID-19 regulation in place. These will be made available in good time prior to the event.

#### **VESSEL ACTION WITH REGARD TO COVID-19**

All vessels may be expected to provide their COVID-19 protocols to the ports in advance and may also be requested to provide evidence that suitably acceptable tests have been carried out.

Sample Vessel protocols can be accessed and downloaded from

<https://sailtraininginternational.org/sailtraining/covid-19-ship-operations-library/>

The username and password to the link has been sent to your email with subject title: -  
Vessel COVID Protocol Library.

We remain available at any time should you have any queries. Please contact: -  
[office@sailtraininginternational.org](mailto:office@sailtraininginternational.org)

#### **COVID-19 Working Group**

## DRAFT PORT PROGRAMMES

**FALMOUTH**                    **17 to 19 August**

**PLEASE NOTE: All vessels must arrive by the deadline of 1800 on Monday 16 August and take part in the Parade of Sail on Thursday 19 August.**

### **Tuesday 17 August**

TBC	Opening Ceremony TBC
TBC	Crew activities

### **Wednesday 18 August**

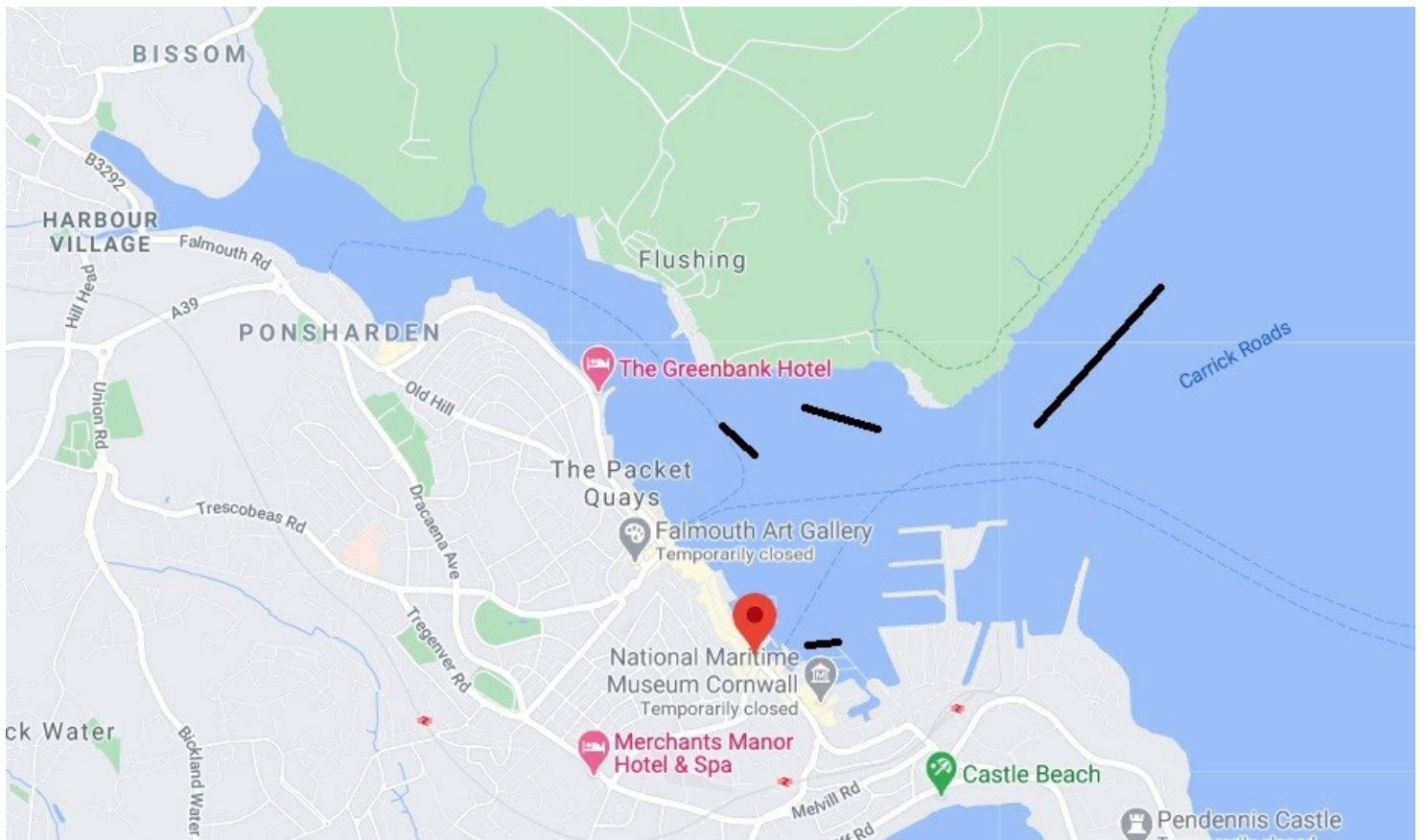
TBC	Crew activities
1500	Captains' Briefing
1930	Captains' Dinner, Royal Cornwall Yacht Club

### **Thursday 19 August**

1500	Start of the Parade of Sail
1800 TBC	Race Start



# FALMOUTH BERTHING AREA



**A CORUÑA**

**26 – 29 August**

**PLEASE NOTE: All vessels must arrive by the deadline of 1200 on Thursday 26 August and take part in the Parade of Sail on Sunday 29 August.**

**Wednesday 25 August**

**1800**      **Deadline** for participating vessels to be in port **to refill fuel** free of taxes (it is necessary to request this in advance to the organization)

**Thursday 26 August**

1000 - 1900      Crew activities  
1200              Deadline for participating vessels to be in port  
**1300**              **Opening Ceremony**  
1000 - 1900      Crew activities

**Friday 27 August**

1000 - 1400      Crew activities  
1700 - 1900      Crew Parade and Prize Giving  
1930              Crew Party

**Saturday 28 August**

1000 - 1400      Crew activities  
1500 - 1600      Captains' Briefing  
2000              Captains' Dinner

**Sunday 29 August**

1200 - 1400      Official Start of Fleet Undocking  
1700 - 1900      Tall Ships Parade

## A CORUÑA BERTHING AREA



## CRUISE IN COMPANY

A Cruise-in-Company will take place from A Coruña between 29 August and 1 September. Further details will be announced on the Captains' Page of the website in the New Year.

**LISBON****2 - 5 September**

**PLEASE NOTE: All vessels must arrive by the deadline of 1200 on Thursday 2 September and take part in the Parade of Sail on Sunday 5 September.**

**Thursday 2 September**

0830	Liaison Officers' briefing
1000 - 1700	Sports Competition
1000 - 2200	Event opened to the public
1200	Opening Ceremony
1200	Deadline for participating vessels to be in port
2000	Captains' Dinner

**Friday 3 September**

0830	Liaison Officers' briefing
1000 - 2200	Event opened to the public
1500	Assembly of Crews for Crew Parade
1600	Crew Parade
1700	Prize Giving Ceremony
2000	Crew Party

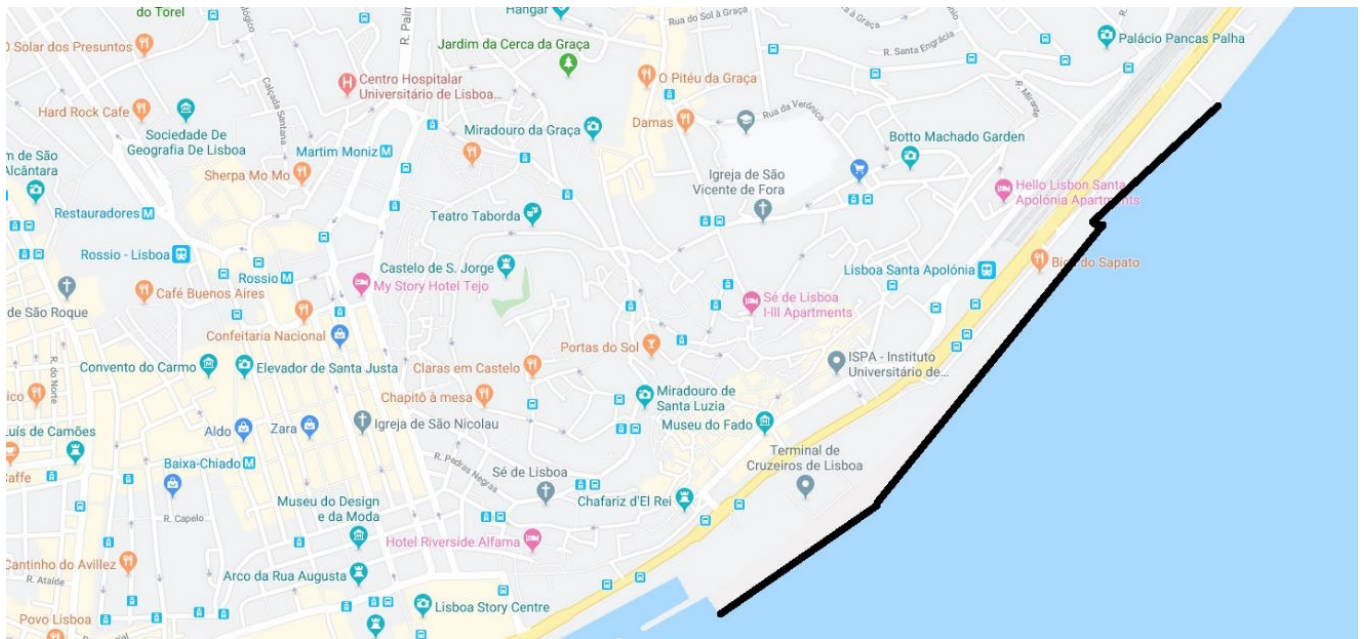
**Saturday 4 September**

0830	Liaison Officers' briefing
1000 - 1200	Lisbon Folk
1000 - 2400	Event opened to the public
1600	Captains' Briefing
1900 - 2400	Concerts/DJs
2300	Fireworks

**Sunday 5 September**

0830	Liaison Officers' briefing
0900 - 1300	Event opened to the public
1300 - 1600	Parade of Sail
TBC	Race Start

## LISBON BERTHING AREA



## BERTHING

Santa Apolónia Quay (all classes)

Lisbon Cruise Terminal:

Class A and B vessels are to be moored in Santa Apolónia Quay, 2.5 miles after (east of) “25 de Abril” bridge, on the northern bank of Tagus river.

Quay coordinates, between:

Lat: 38°42'28.92"N Long: 9°07'43.06"W and

Lat: 38°43'01.32"N Long: 9°07'02.56"W

**CÁDIZ****9 – 12 September**

**PLEASE NOTE: All vessels must arrive by the deadline of 1200 on Thursday 9 September and take part in the Parade of Sail on Sunday 12 September.**

**Thursday 9 September**

1200 - 0300	Event area open
1200	Official Opening Event area
1200	Deadline for participating vessels to be in port
1800 - 2000	Crew activities
2100	Captains' Dinner

**Friday 10 September**

1100 - 0300	Event area Open
1100 - 1400	Crew Activities
1800	Crew Parade
1930	Prize giving
2100	Crew Party

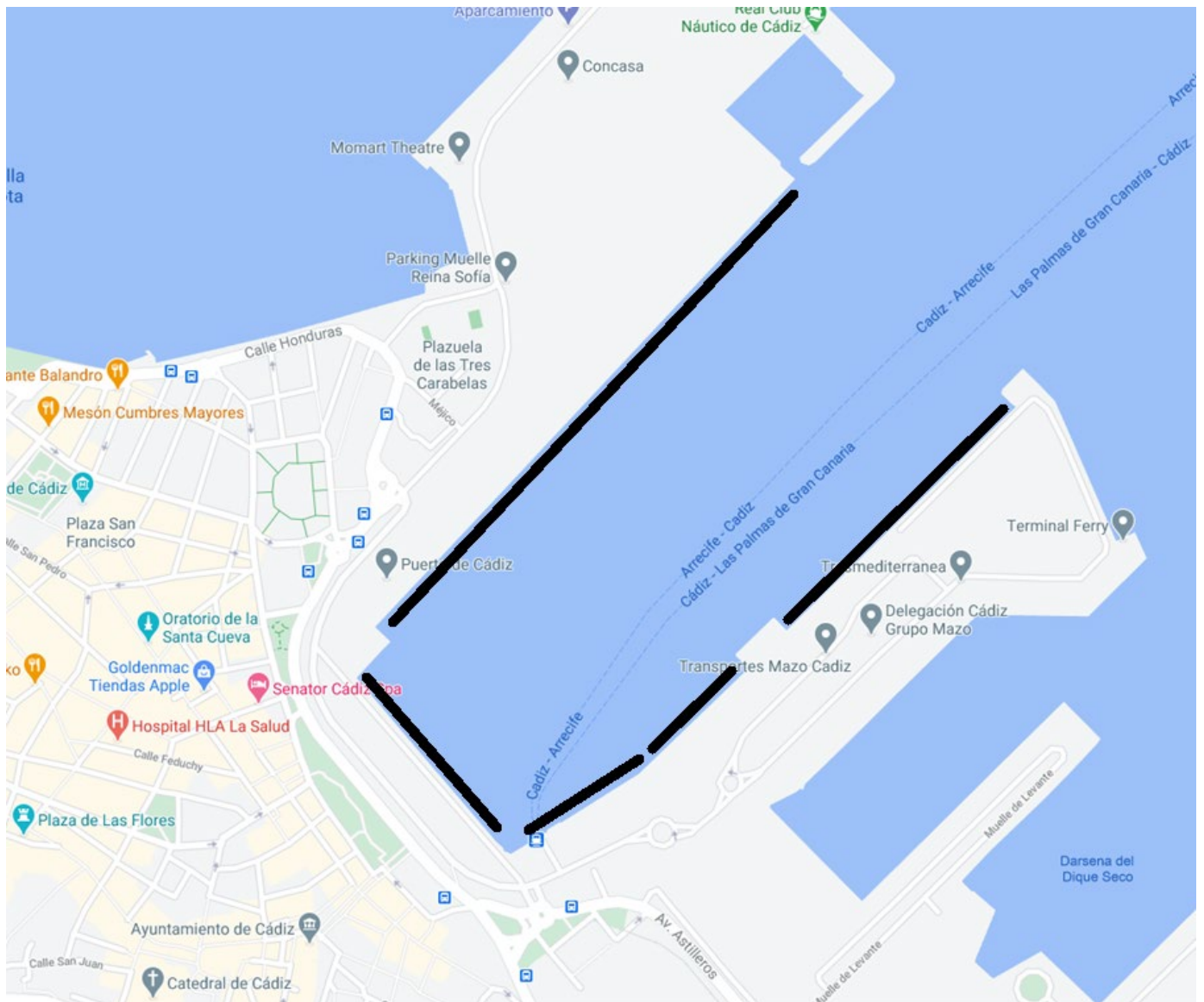
**Saturday 11 September**

1100 - 0400	Event area open
1100 - 1400	Crew Activities
1700	Captains Briefing

**Sunday 12 September**

1000 - 1800	Event area open
1400	Start of official undocking
1600	Parade of Sail

## CÁDIZ BERTHING AREA



**DRAFT COURSES - Please note that the Race Committee reserve the right to change these racecourses**

**NOTE**

The courses given below are **provisional** and may be changed. Confirmation will be given during the Captains' Briefing in each race start port and will also be published in the SAILING & COMMUNICATIONS INSTRUCTIONS which Captains/Masters collect from the Sail Training International Race Office in Falmouth for Race 1 and Lisbon for Race 2.

<b>The Tall Ships Races Magellan-Elcano 500 Series 2021 - Race One Falmouth to A Coruña (19 – 26 August)</b>		
Race Start Thursday 19 August 19:00 UTC (18:00 Local Time)	50°03' N 004°55' W	
WP 1	48°55' N 006°10' W	TO PORT
Finish	43°33' N 008°22' W	

<b>Cruise-in-Company A Coruña to Lisbon (29 August – 2 September)</b>
The Cruise-in-Company between A Coruña and Lisbon is being organised by STA España and Aporvela, Portugal. A few Guest Ports will be planned, which will provide free designated berthing and other facilities. More details to follow.

<b>The Tall Ships Races Magellan-Elcano 500 Series 2021 - Race Two Lisbon to Cádiz (5 – 9 September)</b>		
Race Start Sunday 5 September	38° 36' N 009° 29' W	
WP 1	37° 01' 04' N 008° 59.8' W	TO PORT (Cabo de Sao Vicente L/H)
Finish	36°35' N 006° 35' W	From WP for a distance of 5nm at 180° T



## SHIPS' MAIL

The addresses below are the official addresses for any mail being sent during the Races either to a vessel or an individual crew member on board. When addressing mail to anyone in the fleet it is imperative that the **NAME OF THE VESSEL** is clearly stated.

### FALMOUTH

**Fleet's last full day in port: Wednesday 18 August**

Name of Individual

**Name of Vessel**

The Tall Ships Races Falmouth 2021  
Falmouth Town Council  
The Old Post Office  
The Moor  
Falmouth  
Cornwall  
TR11 3QA  
UK

### A CORUÑA

**Fleet's last full day in port: Saturday 28 August**

Name of individual

**Name of vessel**

The Tall Ships Races A Coruña 2021  
Palacio de Deportes de Riazor  
Avenida Buenos Aires, s/n  
15011 – A Coruña  
Spain

### LISBON

**Fleet's last full day in port: Saturday 4 September**

Name of individual

**Name of vessel**

The Tall Ships Races Lisbon 2021  
Terminal de Cruzeiros de Lisboa  
Av. Infante Dom Henrique  
1100-651 Lisboa  
Portugal

### CÁDIZ

**Fleet's last full day in port: Saturday 11 September**

Name of individual

**Name of vessel**

Tall Ships Races Cádiz 2021  
Instituto Municipal de Deporte,  
Avda. José León de Carranza s/n  
11011 Cádiz  
Spain

## **CREW TRAVEL – FALMOUTH Arrival/Transfer Information**

### **By Car**

The M4, M5 and M6 motorways have made travel to Cornwall simple and straightforward, while within Cornwall itself, the A30 and A38 continue to improve with fast dual carriageways. Follow the M5 to Exeter, and join the A30 to Truro, and then follow the signs to Falmouth.

For up-to-date traffic information listen to local radio stations and plan your journey using the **AA Route Planner** for a tailor-made travel plan with timings and mileage. For information on any possible delays or roadworks throughout the UK or in Cornwall visit <https://www.theaa.com/route-planner/traffic-news>

### **By Air**

**Cornwall Airport, Newquay** <https://www.cornwallairportnewquay.com/> links Cornwall to major cities across the country as well as internationally. **Car hire** is available at Newquay Cornwall Airport through **Europcar** and **Hertz** who have offices at the terminal <https://www.cornwallairportnewquay.com/the-airport/car-hire> Other regional airports are Exeter <http://www.exeter-airport.co.uk>, and Bristol <http://www.bristolairport.co.uk>.

### **By Coach**

**National Express** serves Falmouth from destinations throughout the UK. Connecting services to Cornwall are available from Bristol, Birmingham, and London.

To book visit the website at <https://www.nationalexpress.com/en> or call 0871 781 8181

### **By Train**

**First Great Western** operates high speed services from London Paddington, South Wales, and the Cotswolds to Cornwall, including **sleeper services** from London Paddington. **Cross Country Trains** (Arriva Trains) operate services into Cornwall from the Midlands, the North and Scotland. For further information visit <https://www.nationalrail.co.uk/> or call **National Rail Enquiries** on 03457 48 49 50.

**The First Group** co-ordinate rail and bus services from stations.

**The Maritime Line** When arriving by train, change at Truro and take the Maritime Line, a twice hourly rail service between Truro and Falmouth. Journey time is approximately 20 minutes. Falmouth has three stations at the Docks, Dell and Penmere.

### **By Ferry**

There are many ferry companies that operate daily services to the UK from mainland Europe and Ireland and these terminals are within easy reach of the major motorways leading you down to Cornwall.

These include: **Stena Line**, **P&O Ferries**, **Irish ferries** and **DFDS Seaways**. Travelling across the Channel from France to the UK can take as little time as 35 minutes on the **Eurotunnel**.

Plymouth is the closest port to Cornwall being just across the River Tamar. **Brittany Ferries** offer services from Roscoff and Santander into Plymouth.

### **Taxis in Falmouth**

Abacus & Falmouth Taxis email at [bookings@falmouthtaxis.com](mailto:bookings@falmouthtaxis.com) or call 01326 212141 to book.

### **Rent a Car in Falmouth**

Car rental - Enterprise Penryn 01326 373355

### **Public Transport**

And finally, look at the <https://www.traveline.info/> website, Britain's free online route and journey planner. Find bus and train times, plan your car journey, plan your cycle route, park and ride information, traffic news, flight information and more.

## **CREW TRAVEL – A CORUÑA Arrival/Transfer Information**

A Coruña will provide a crew accommodation service, there will be located at Cuartel de Atocha (Atocha's Military Headquarters). It is important to warn that in addition to the sleeping bag it will be mandatory to have a bottom sheet and pillowcase to use this service. More details can be found at: -

[tsr@coruna.es](mailto:tsr@coruna.es)

Extra and detailed information on the following link: <http://www.turismocoruna.com>

A Coruña is situated on the Northwest coast of Spain, has excellent access to transportation makes it an ideal location for the TSR.

### **By Air**

**A Coruña Airport, Alvedro (LCG)**, is situated just 9 km from the city centre and the harbour. There are daily flights to and from London/Heathrow (LHR), Madrid (MAD), Barcelona (BCN), Seville (SVQ), Bilbao (BIO) and Valencia (VLC). Low-cost to other destinations in summer. For flight information check the airlines and the Spanish airports websites:

[www.aena.es](http://www.aena.es) [www.vueling.es](http://www.vueling.es) [www.iberia.com](http://www.iberia.com) [www.aireuropa.com](http://www.aireuropa.com) [www.volotea.com](http://www.volotea.com)

**Airport Bus:** Every day. Ticket: €1.55. Company: ASICASA. Operates every 30 minutes Monday to Friday, and every 60 minutes on Saturday and Sunday from outside the airport to the city centre in front of the harbour. The service operates between 0715 and 2145, 0800 and 2200 Saturday and Sunday Ticket: €1.50.

**Taxi.** The trip to/from A Coruña costs between €15 and €20.

### **Closest airports:**

Santiago de Compostela (SCQ), 75km from A Coruña

Vigo (VIG), 175km from A Coruña

Asturias, Avilés (OVD), 245km from A Coruña

Porto (OPO), 285km from A Coruña

### **By Train**

Daily route from Madrid. Plenty of frequencies from Vigo and Santiago de Compostela. Train station is located 2.5km from the harbour. Buses and taxis available. More information on the following link:

[www.renfe.com](http://www.renfe.com)

### **By Bus**

Several companies have direct daily buss connections with Madrid, Vigo, Santiago de Compostela, Avilés and other destinations on NW of Spain. The bus station is close to the train station and easy to access to the harbour.

Useful websites:

<https://www.coruna.gal/web/gl/detalle/estacion-de-autobuses-de-a-coruna/entidad/1149055911348>

### **By Car**

A Coruña is connected by motorway up to the Portuguese border (187km), up to the French border (660km) and Madrid (591km), among other destinations.

In A Coruña operate the principal companies of Car Rent, with offices in the city centre, train station and airport.

## **CREW TRAVEL – LISBON Arrival/Transfer Information**

Lisbon is situated in the centre of Portugal – at the mouth of the River Tagus. Lisbon is very easy to get to from the rest of Europe by means of plane, train, coach, ferry, or car.

### **How to get to Lisbon by plane**

Lisbon airport is located just 5kms away from Santa Apolónia quayside and is served by the metro and buses. Lisbon has daily direct flights to most European capitals, including many low-cost companies.

Useful websites:

[www.flytap.com](http://www.flytap.com)

[www.easyjet.com](http://www.easyjet.com)

[www.ryanair.com](http://www.ryanair.com)

### **Taxis**

In front of the airport taxis are waiting to bring you to where you want.

Useful phone numbers:

Radio Taxis Lisboa: + 351 218 119 000

Teletaxis: + 351 218 111 100

CoopTaxis: +351 21 793 2756

Some private sharing companies operate in Lisbon like Uber, Kapten, Bolt

### **How to get to Lisbon by train**

CP (Comboios de Portugal) covers the country with a dense network of train services and operates some international lines.

Santa Apolónia Train Station is situated in the centre of the city and just 100 metres from the harbour.

Useful websites:

[www.cp.pt](http://www.cp.pt)

### **How to get to Lisbon by coach**

Carris operates in the city and runs an extensive network of local buses in Lisbon. In addition, Lisbon is linked to other major cities in Portugal as well as Europe by several long-distance bus routes a day.

Useful websites:

[www.flixbus.pt](http://www.flixbus.pt)

<https://www.rede-expressos.pt/>

## **CREW TRAVEL – CÁDIZ Arrival/Transfer information**

Cádiz is situated in the South of Spain on the Atlantic coast – it is well connected by plane, train, and car.

### **How to get to Cádiz by Plane**

The nearest airports to Cádiz are:

**Jerez de la Frontera** (40kms) with direct flights from the U.K. and Germany as well as Madrid, Barcelona, and some other national destinations. Train or Taxi to Cádiz (30 mins)

**Seville Airport** (110kms) Direct flight from many European cities and national destinations.  
Train or coach to Cádiz: (90 mins)

**Gibraltar Airport:** Direct flights from the U.K.  
Car to Cádiz (90 mins)

**Malaga Airport** (250kms) Direct flights from many European cities and national destinations.  
Coach or Car to Cádiz (180 Mins)

Useful websites:

[www.aena.es](http://www.aena.es)

[www.easyjet.com](http://www.easyjet.com)

[www.ryanair.com](http://www.ryanair.com)

[www.britishairways.com](http://www.britishairways.com)

### **How to get to Cádiz by Train**

The Cádiz train station is located in the heart of the old city, 5 minutes' walk from the event site.

There is a high-speed rail link with Madrid and regular trains from Seville.

Useful websites:

[www.renfe.es](http://www.renfe.es)

### **How to get to Cádiz by Coach**

There are regular coach services to and from Madrid, Seville, and other regional and national destinations.

Useful websites:

[www.reserbus.com](http://www.reserbus.com)

[www.socibusventas.es](http://www.socibusventas.es)

### **Taxis in Cádiz**

Tel: 956 212121

[www.taxicádiz.es](http://www.taxicádiz.es)

## FUTURE RACES, FESTIVALS AND EVENTS

**2021**

### The Tall Ships Races



Klaipeda, Lithuania	Sun 27 to Wed 30 June	Race 1
Turku, Finland	Mon 5 to Thurs 8 July	Cruise-in-Company
Tallinn, Estonia	Thurs 15 to Sun 18 July	Race 2
Mariehamn, Åland Islands	Thurs 22 to Sun 25 July	Race 3
Szczecin, Poland	Sat 31 July to Tues 3 August	

**2021**

### The Tall Ships Races Magellan-Elcano 500 Series 2021



Falmouth, UK	Tues 17 to Thurs 19 August	Race 1
A Coruña, Spain	Thurs 26 to Sun 29 August	Cruise-in-Company
Lisbon, Portugal	Thurs 2 to Sun 5 Sept	Race 2
Cádiz, Spain	Thurs 9 to Sun 12 Sept	

**2021**

### SCF White Sails of Peace Tall Ships Regatta



Port in South Korea TBC	Tues 10 to Fri 13 August TBC	Race 1
Nanao, Japan	Fri 20 to Mon 23 August	Race 2
Vladivostok, Russia	Mon 30 August to Sun 5 Sept	

**2022**

### The Tall Ships Races



Esbjerg, Denmark	Thurs 7 to Sun 10 July	Race 1
Harlingen, The Netherlands	Thurs 14 to Sun 17 July	Cruise-in-Company
Antwerp, Belgium	Fri 22 to Mon 25 July	Race 2
Aalborg, Denmark	Thurs 4 to Sun 7 August	

## 2023 The Tall Ships Races



The Tall Ships Races 2023 will take place in North West Europe.

Ports and dates will be announced in Spring 2021.

### **CAPTAINS'/MASTERS' NOTES:**



**Sail Training International**

