

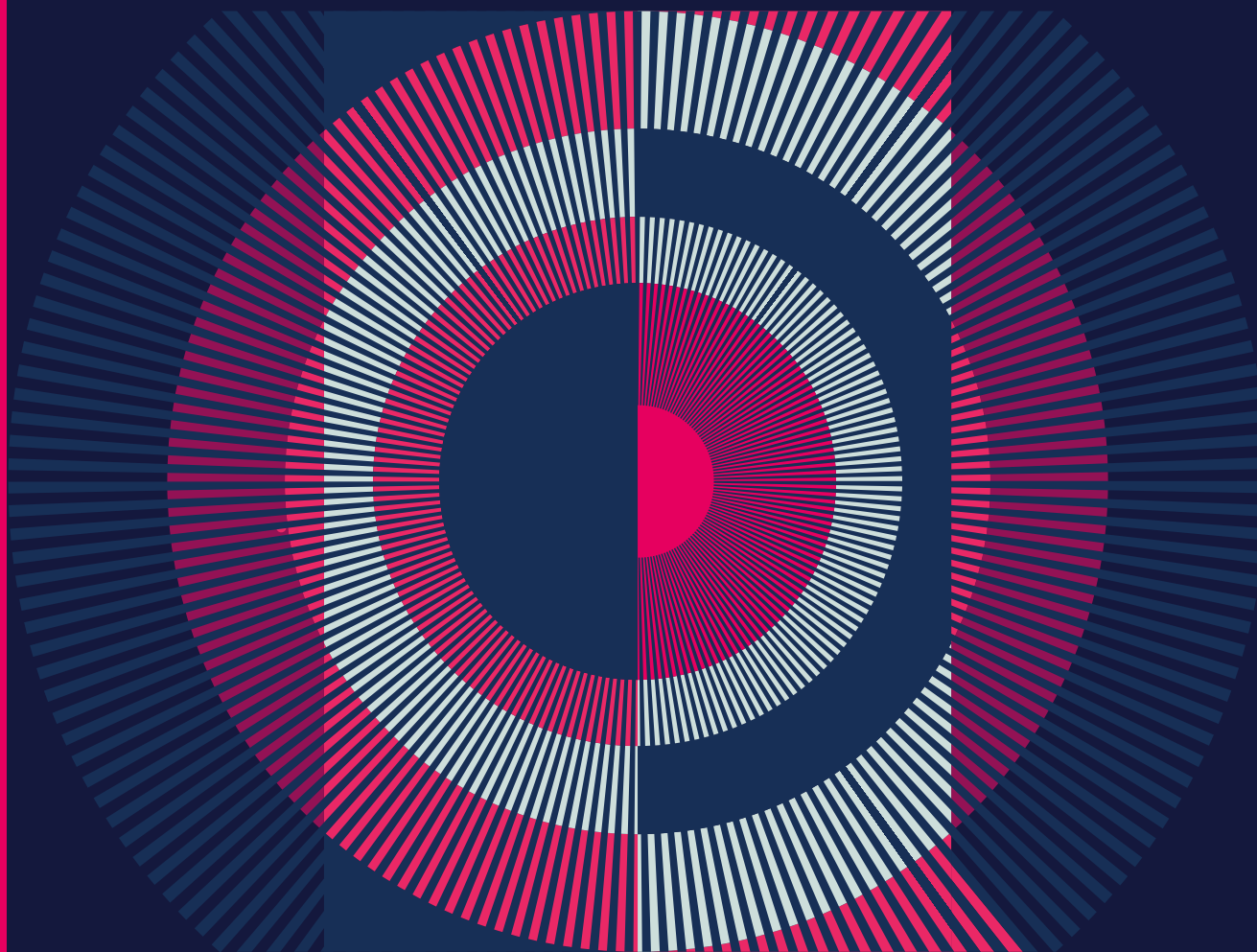
21-24 JULY



THE TALL SHIPS RACES
Bergen 2019

organised by Sail Training International

CAPTAINS MANUAL



Main sponsors:



Organized by:

Sponsors:



Supporters:



Project Management:



WELCOME!

It is a great pleasure to welcome the captains and crews of some of the world's most beautiful sailing ships from across the world to Bergen for The Tall Ships Races 2019.

Bergen is the second largest city in Norway and is the Gateway to the Norwegian fjords. We are also proud that it is a UNESCO World Heritage City, a European City of Culture and a Creative City of Gastronomy.

The port of Bergen is the most important maritime hub in Western Norway and has a very rich maritime history. Founded more than 900 years ago, Bergen has roots to the Viking era. As one of the main offices of the Hanseatic League, Bergen was the centre of prosperous trade between Norway and the rest of Europe for several hundreds of years. Bryggen is the most obvious remnant from this time, and is today home to many of the city's restaurants, pubs, craft shops and historical museums.

We hope you enjoy your time in Bergen and find some time to enjoy its beauty – from the seven surrounding mountains to the infamous deep blue fjords.

Welcome to Bergen. We hope you enjoy the event and your time here during The Tall Ships Races.



Yours sincerely,

Morten Dahl Sebjørnsen
Project Manager
The Tall Ships Races Bergen 2019

CONTENTS



1. CONTACT ADDRESSES AND TELEPHONE NUMBERS

- 1.1 Port and Sail Training International Contacts
- 1.2 Consulates

2. ARRIVAL ARRANGEMENTS

- 2.1 Charts
- 2.2 Frequencies
- 2.3 Call Signs
- 2.4 Procedures
- 2.5 Pilots
- 2.6 Tugs
- 2.7 Customs & Immigration
- 2.8 Security

3 BERTHING

- 3.1 Special berthing Instructions
- 3.2 Formalities
- 3.3 Berthing plan

4 TOWN PLAN

- 4.1 In Port Facilities
- 4.2 Town Information
- 4.3 Town Plan

5 CAPTAINS' PROGRAMME

- 5.1 Captains' Dinner
- 5.2 Afterguard (Ships' Officers') Party
- 5.3 Captains' Briefing

6 CREW PROGRAMME

- 6.1 Crew Party
- 6.2 Crew Parade
- 6.3 Prize-giving Ceremony
- 6.4 Crew Activities

7 CITY CULTURAL PROGRAMME

8 LIAISON SYSTEM

- 8.1 Explanation
- 8.2 Chief Liaison Officer
- 8.3 Location
- 8.4 Crew Friends
- 8.5 Group Leader Allocation

9 SHIP SERVICES

- 9.1 Fuel
- 9.2 Water
- 9.3 Electricity
- 9.4 Waste
- 9.5 Gas
- 9.6 Repairs
- 9.7 Stores
- 9.8 Ship Agents

10 CREW SERVICES

- 10.1 Crew Center
- 10.2 First Aid
- 10.3 Laundry
- 10.4 Toilets & Showers

11 ACTIVITY SIGN UP FORMS

- 11.1 Customs & Immigration
- 11.2 Crew Activity Sign-up Forms

12 CRUISE IN COMPANY INFORMATION



1. CONTACT ADDRESSES AND TELEPHONE NUMBERS



1.1 PORT AND SAIL TRAINING INTERNATIONAL CONTACTS

Liaison Office

Vikingshallen
Øvre Dreggsallmenningen 7, 5003 Bergen

Chief Liaison Officer: Trond Småberg
CLO Tel: +47 488 909 12
CLO E-mail: tsmaberg48@gmail.com

The liaison officer(s) assigned to your ship will give you their contact information as they greet you on the first day in port.

If your ship is arriving into port early, please call the CLO and he will assign the LO to your ship in time to coincide with your arrival.

Harbour Masters Office

Nøstegaten 30
5010 Bergen

Port Director: Johnny Breivik
Bergen Port Control
Tel: +47 9598 9980 (24/7)
Web: www.bergenhavn.no

Sail Training International Race Office

Room: Forstuen
Radisson Blu Bryggen
Dreggsallmenningen 1, 5003 Bergen

Race Office: Amanda Goodden
Tel: +44 (0)7962 032471

Press & Media Center

Room: Kongesal 1 & 2
Radisson Blu Bryggen
Dreggsallmenningen 1, 5003 Bergen

Contact: Cathrine Ommundsen (Press center)
Contact: Karolina Sadowska (Press contact)
Contact: Guro Jåstad (Social Media)

Cathrine: Tel: +47 478 60 168
Karolina: Tel: +47 480 05 076
Guro: Tel: + 47 984 11 965



Technical Helpdesk - Grieg Logistics

Room: DR 2
Radisson Blu Bryggen
Dreggsallmenningen 1, 5003 Bergen

Opening hours: 08.00 - 20.00
From: Friday 19 July - Wednesday 24 July
Tel: +47 91 51 60 98 (24/7)
Phone number available from 14 July 2019

Email: TechHelp.tsrb2019@grieg.no

Map references refer to the Town Plan which can be found in section 4

1.2 CONSULAR ADDRESSES AND TELEPHONE NUMBERS IN BERGEN

AUSTRIA

Edvard Griegsvei 3B
5059 Bergen
Norway
Tel: (+47) 55 33 61 40, (+47) 90
04 89 69
Email: gerhard@dnah.no

BANGLADESH

Østre Hopsveg
5043 Hop
Bergen
Norway
Contact: Eilif Døsen
Tel: +47 905 322 77
Email: eilid@online.no

BELGIUM

Kanalveien, 11 - Entrance B (The
Wideberg House) 2nd floor
5068 Bergen
Norway
Contact: Peter B. Namtvedt
Tel: +47 46 47 46 54
Email: Peter@namtvedt.no

BRAZIL

(Honorary Vice Consulate in
Bergen)
Kaffehuset Friele
Midtunhaugen 6, Nesttun
Postboks 175
5852 Bergen
Norway
Contact: Birgitte Friele
Tel: (+47) 55 92 66 00, (+47) 920
58 300
Email: birgitte@friele.no, bfriele@
hotmail.com

CANADA

P.O. Box 2439 Solheimsviken
5824 Bergen
Norway
Tel: (011 47) 55 29 71 30
Fax: (011 47) 55 29 71 31
Email: honconbergen@canada.no

CZECH REPUBLIC

P.O.B. 1124
Christian Michelsensgt.2A
5809 Bergen
Tel: (+47) 55215401
Fax: (+47) 55215425
Email: bergen@honorary.mzv.cz

DENMARK

(Honorary Consulate in Bergen)
Kalfarveien 57 A
P.O. Box 2319 Hansaparken
5828 Bergen
Norway
Contact: Bjarne Rieber
Tel: (+47) 55 55 91 00
Fax: (+47) 55 55 91 01
Email: brg@brg.no

ESTONIA

(Honorary Consulate in Bergen)
Fleslandsvika 22
5258 Blomsterdalen
Norway
Contact: Karin Ellis
Tel: (+47) 911 83 895
Email: karin.ellis@mfa.ee

FINLAND

Finlands honorarkonsulat, PB 84
Kokstad, 5863
Kokstadveien 42 B
5257 Kokstad
Tel: (+47) 55 60 63 83
Fax: (+47) 55 60 63 91
Email: per.jaeger@jaeger.no

FRANCE

(Honorary Vice Consulate in
Bergen)
Fjellveien 72
5019 Bergen
Norway
Contact: Kjersti Fløttum
Tel: (+47) 95 20 83 42
Fax: (+47) 55 58 42 60
Email: kjersti.flottum@uib.no

GERMANY

c/o EDGE Norway AS
Solheimsgaten 15
5058 Bergen
Norway
Tel: (+47) 55 38 98 00
Fax: (+47) 55 38 98 01
Email: bergen@hk-diplo.de

GREECE

Henschien Insurance Services Ltd
AS
Ole Landmarksvei 14
5058 Bergen
Norway
P.O. Box 3156 Arstad 5829
Bergen, Norway
Tel: (+47) 55 38 98 00

Fax: (+47) 55 38 98 01
Email: firmapost@henschien.no

ICELAND

Bredsgården 1D
N-5003 Bergen
Norway
Tel: (+47) 932 39 839
Email: konsul@impress.no

INDIA

(Honorary Vice Consulate in
Bergen)
Strandvikvegen 559
5643 Strandvik
Norway
Contact: Svein Lang
Tel: (+47) 913 25 880

JAPAN

(Honorary Consulate General in
Bergen)
Zetlitz Gate 10
5006 Bergen
Norway
Contact: Åge Vallestad
Tel: (+47) 934 73 057
Email: valdez@bgnett.no

KOREA

(Honorary Consulate General in
Bergen)
Postboks 98
Slåtthaug
5851 Bergen
Norway
Contact: Trond Mohn
Tel: (+47) 55 99 90 10
Email: trond.mohn@framo.no

LATVIA

(Honorary Consulate in Bergen)
Teatergaten, 35
5010 Bergen
Norway
Contact: Jostein Alvheim
Tel: (+47) 55 36 48 20
Fax: (+47) 55 36 48 36
Email: alvheim@alvheim-hansen.no

LITHUANIA

(Honorary Consulate in Bergen)
Statsmin. Michelsensvei 36
5231 Paradis
Norway
Conta
Contact: Espen Selvik
Tel: (+47) 950 69 521
Fax: (+47) 55 12 31 01

Email: espen.selvik@yahoo.com

MALTA

AS J. Ludwig Mowinckels Rederi, Brad-
benken 1, P.O. Box 4070
Dreggen
N 5835 Bergen
Norway
Tel: (+47) (55) 216 300/32/33
Fax: (+47) (55) 216 305
Email: maltaconsul.bergen@gov.mt

THE NETHERLANDS

Kalfarveien 57a
5018 Bergen
Norway
Tel: (+47) 55 55 91 00
Fax: (+47) 55 30 19 81
Email: sissel@brg.no

POLAND

(Honorary Consulate in Bergen)
Kalfarveien 57 A
5808, Bergen
Norway
Tel: (+47) 55 55 91 00
Fax: (+47) 55 55 92 01
Email: oystein@brg.no

PORTUGAL

(Honorary Consulate in Bergen)
Storetveien 127
5231 Paradise - Bergen
Norway
Contact: Tore Johan Mowinckel
Skjensvold
Tel: (+47) 92 03 09 53, (+47) 55 91
02 27
Fax: (+47) 55 92 22 44
Email: [cathrine.alsaker.sandven@
lantmannen.com](mailto:cathrine.alsaker.sandven@lantmannen.com)

ROMANIA

(Honorary Consulate in Bergen)
Statsminister Michelens vei 38
5231 Paradis
Norway
Contact: Thorstein Leif Selvik
Tel: (+47) 901 31 560
Email: ts@artesiacapital.no

SLOVAKIA

(Honorary Consulate in Bergen)
Strandgaten 18
5013 Bergen
Norway
Contact: Morten L. Gjesdahl
Tel: (+47) 55 23 55 60, (+47) 480
41 500
Email: morten.l.gjesdahl@gjesdahl.no

SWEDEN

(Honorary Consulate in Bergen)
Kanalveien 11, ingång A
5068 Bergen
Norway
Contact: Per Gunnar Rasmussen

Tel: (+47) 948 71 162

Email: [marit.tolo@stromberg-gruppen.
no](mailto:marit.tolo@stromberg-gruppen.no)

SWITZERLAND

(Honorary Consulate in Bergen)
PB 83
5787 Lofthus
Norway
Contact: Barbara Zanoni Utne
Tel: (+47) 53 67 00 00, (+47) 93 04
87 73
Email: lofthus@honrep.ch

TUNISIA

(Honorary Consulate in Bergen)
Klosteret 8
5005 Bergen
Norway
Contact: Bjørn Hugo Grinde
Tel: (+47) 916 62 585
Email: grinde@hilland.no

URUGUAY

(Honorary Consulate in Bergen)
Smøråsvegen 22
5238 Raadal
Norway
Contact: Nordahl Fredrik Anthonisen
Tel: (+47) 55 52.15.05
Fax: (+47) 55 52.15.01
Email: nordahl@anthonisen.com

2. ARRIVAL ARRANGEMENTS

2.1 CHARTS

Entrance from South: Chart no.21
Entrance from North: Chart no. 23
Harbour Area Chart: Chart no.460

2.2 FREQUENCIES

Radio communicaitons:

Fedje VTS Entrance from South - VHF Ch. 71, Pilot VHF Ch. 13
Fedje VTS Entrance from North – VHF Ch. 80, Pilot VHF Ch.13
VHF Ch. 12 - Bergen Port Control/ All other traffic
VHF Ch. 14 - The principal port operations frequency for the event and should be used for all arrival/departure communications
VHF Ch. 16 - Emergency situations

Ships over 24 metres must report to Fedje VTS before entering traffic zone.

2.3 CALL SIGNS

VHF 12 & 14 - Bergen Port Control
VHF 71 & 80 - Fedje VTS
VHF 13 – Pilot Korsfjorden (S) and Fedje Pilot (N)

2.4 PROCEDURES

All participants should be berthed by 14:00 on Sunday 21 July. Vessels will be welcome on Friday 19 July or before if pre-announced and available berthing in Port. All vessels must call "Bergen Port Control" 1 hour before arrival, giving vessel-name, callsign, ETA and request the assistance needed (tug, boatmen etc.).

Following details are to be reported together with the ETA to the Port:

- Name of vessel, call sign and flag
- Last port of call
- Next port of call (after Bergen)

Bergen Port Control

VHF Channel 14 (TSR)
Tel. +47 55 56 89 80
E-mail: havnevakt@bergenhavn.no

FEDJE VTS:

All participating vessels over 24 metres are to call FEDJE VTS on VHF Ch. 71 if entering from South or Ch. 80, if entering from the North.

During the initial contact vessels should:

- Request pilotage if required (pilot request see section 2.5)
- Be prepared to receive navigational information for sailing in VTS area.

2.5 PILOTS

Pilots should be ordered via SafeSeaNet
When entering from North – Call Fedje Pilot on VHF Ch. 13
When entering from South – Call Korsfjorden Pilot on VHF Ch. 13

2.6 TUGS

Tugs will be in attendance at the entrance to Vaagen. Their services are free of charge. A boat marked with the sign "FOLLOW ME" will escort vessels from the entrance to Vaagen to the assigned berth

2.7 CUSTOMS & IMMIGRATION

(Forms available in Section 11)

Ships over 300 GT must sign in to SafeSeaNet to declare custom information, crew list etc.

Vessels travelling from outside of Norway, with GT below 300 GT, must contact customs at the first Norwegian port they enter (or via agent).

For more information about SafeSeaNet Norway, please see Section 11.

Customs can be contacted on telephone no.+47 22 86 03 12.

Military vessels unable to use SafeSeaNet are requested to contact naval base Haakonsværn at navbashaak@mil.no

It is forbidden to sell any goods from the vessel that has not been cleared by the Customs, this includes alcohol and tobacco. Customs officers may inspect vessels for prohibited goods.

A current crew list should be given to the liaison officer on arrival.

It should be noted that it is the responsibility of the individuals concerned to obtain any visas that may be necessary and that failure to be in possession of such documents may have implications for them and the operators of the host vessel. Entrants are also reminded that regulations for visas, etc. are liable to change.

2.8 SECURITY

ISPS vessels need to have a signed copy of "Declaration of Security" (DoS) before arriving into Bergen.

This applies to vessels sailing with an International Ship Security Certificate (ISSC) – where an agreement between the Port Authority and each vessel must be in order to comply with the ISPS Code.

3. BERTHING



3.1 SPECIAL BERTHING INSTRUCTIONS

A detailed updated berthing plan will be delivered to captains at the captains briefing before departing Fredrikstad but is included as a preliminary version.

All vessels (with a few exceptions) will be berthed with their bow heading out of Vaagen (northward).

Linesmen will be attending the vessels during the mooring operation. (free of charge).

Tidal waters:

Sunday, 21. July 2019			Monday, 22. July 2019		
High/low	Time	Predicted tides	High/low	Time	Predicted tides
	02:15	139 cm		02:51	135 cm
	08:22	32 cm		08:56	36 cm
	14:46	129 cm		15:23	125 cm
	20:25	40 cm		21:00	45 cm

Tuesday, 23. July 2019			Wednesday, 24. July 2019		
High/low	Time	Predicted tides	High/low	Time	Predicted tides
	03:29	131 cm		04:11	126 cm
	09:33	41 cm		10:16	46 cm
	16:03	121 cm		16:48	118 cm
	21:40	50 cm		22:28	55 cm

The tide varies about 1 metre.

3.2 FORMALITIES

- Dress ship
- Colours

It is customary to fly colours from 08:00 – 21:00 LT. Vessels are invited to follow the flag flying of the Bergenhus Castle. It will be appreciated if the vessels are "Dressed Overall" daily throughout their visit (weather permitting).

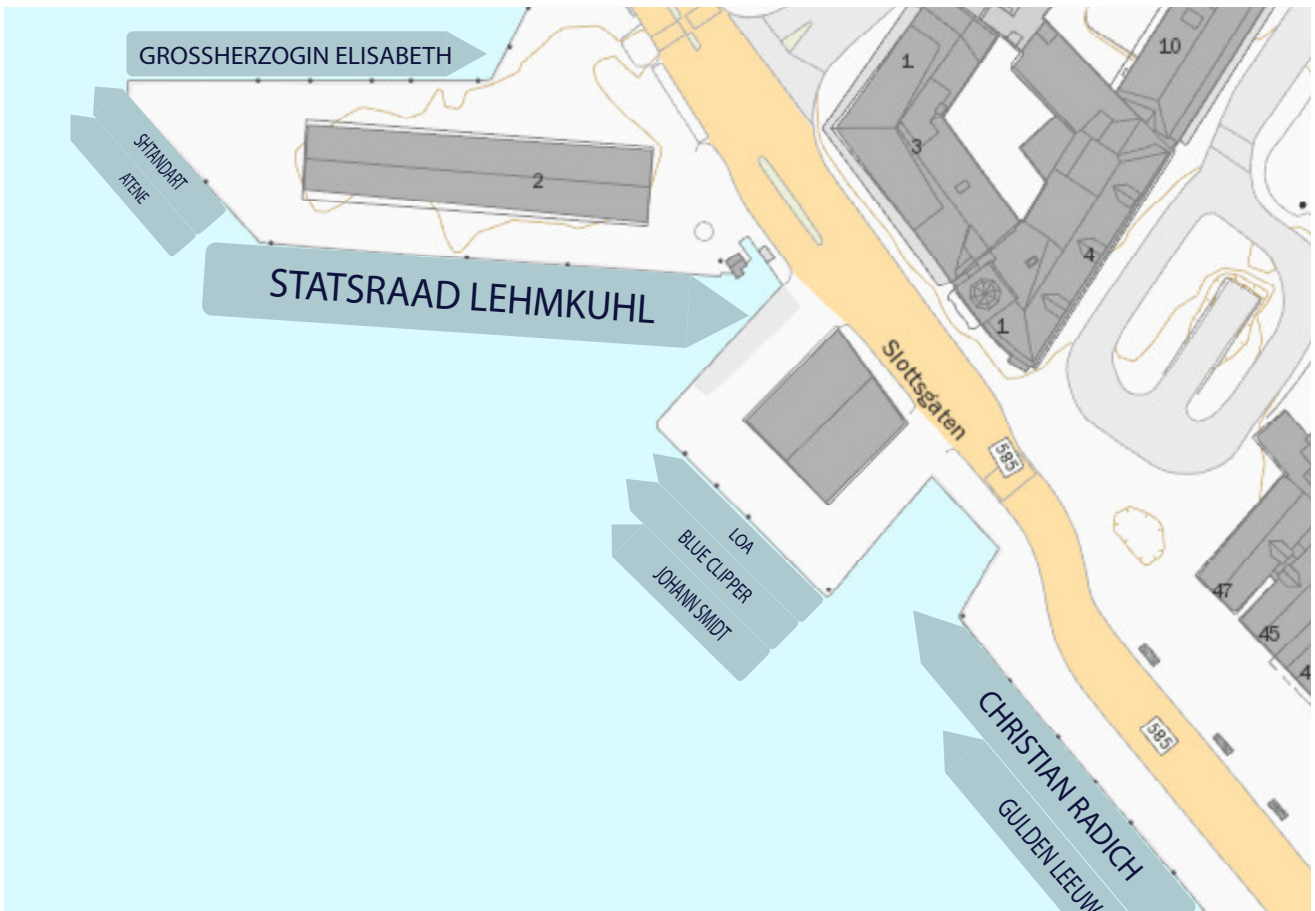
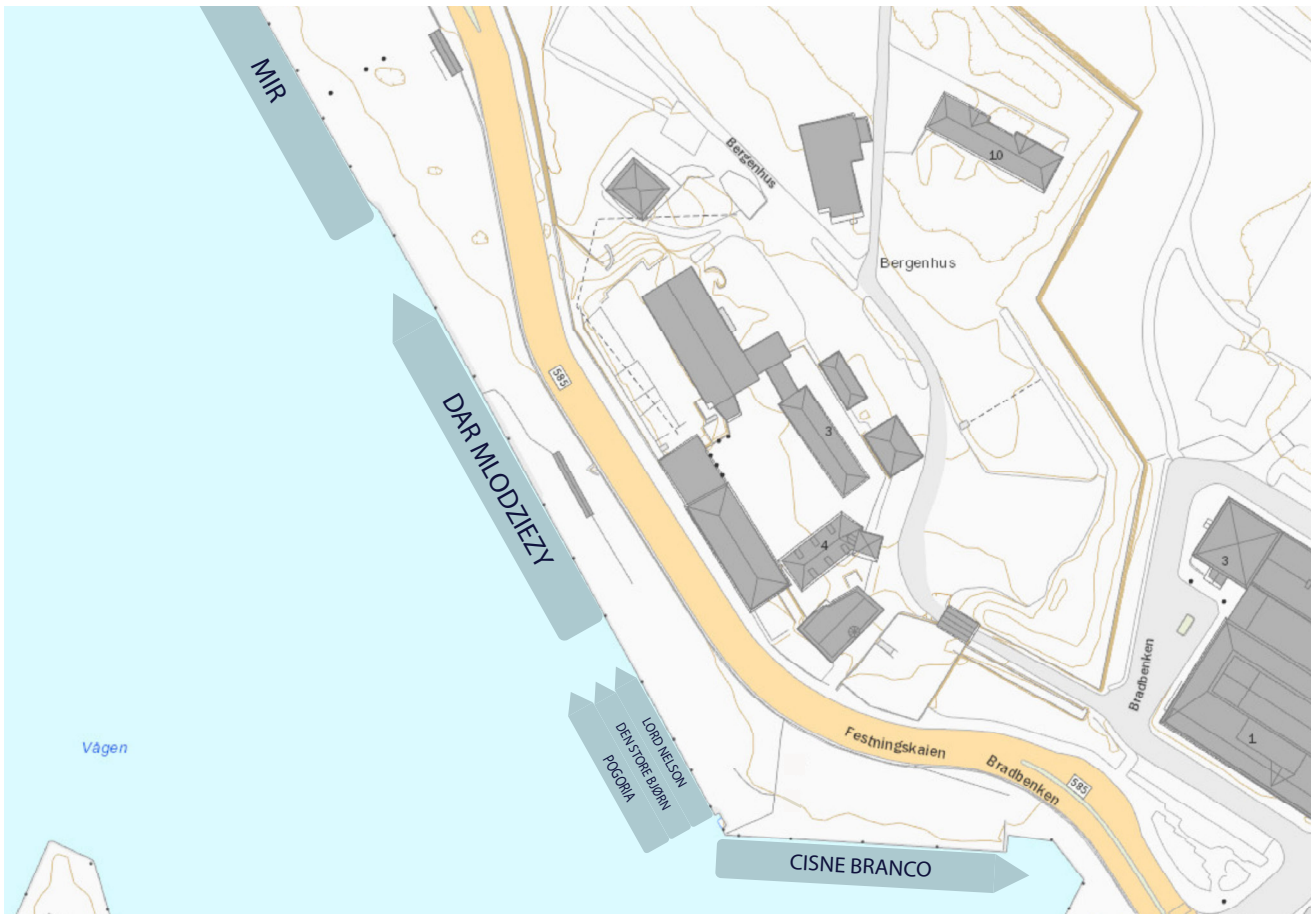
3.3 BERTHING PLAN

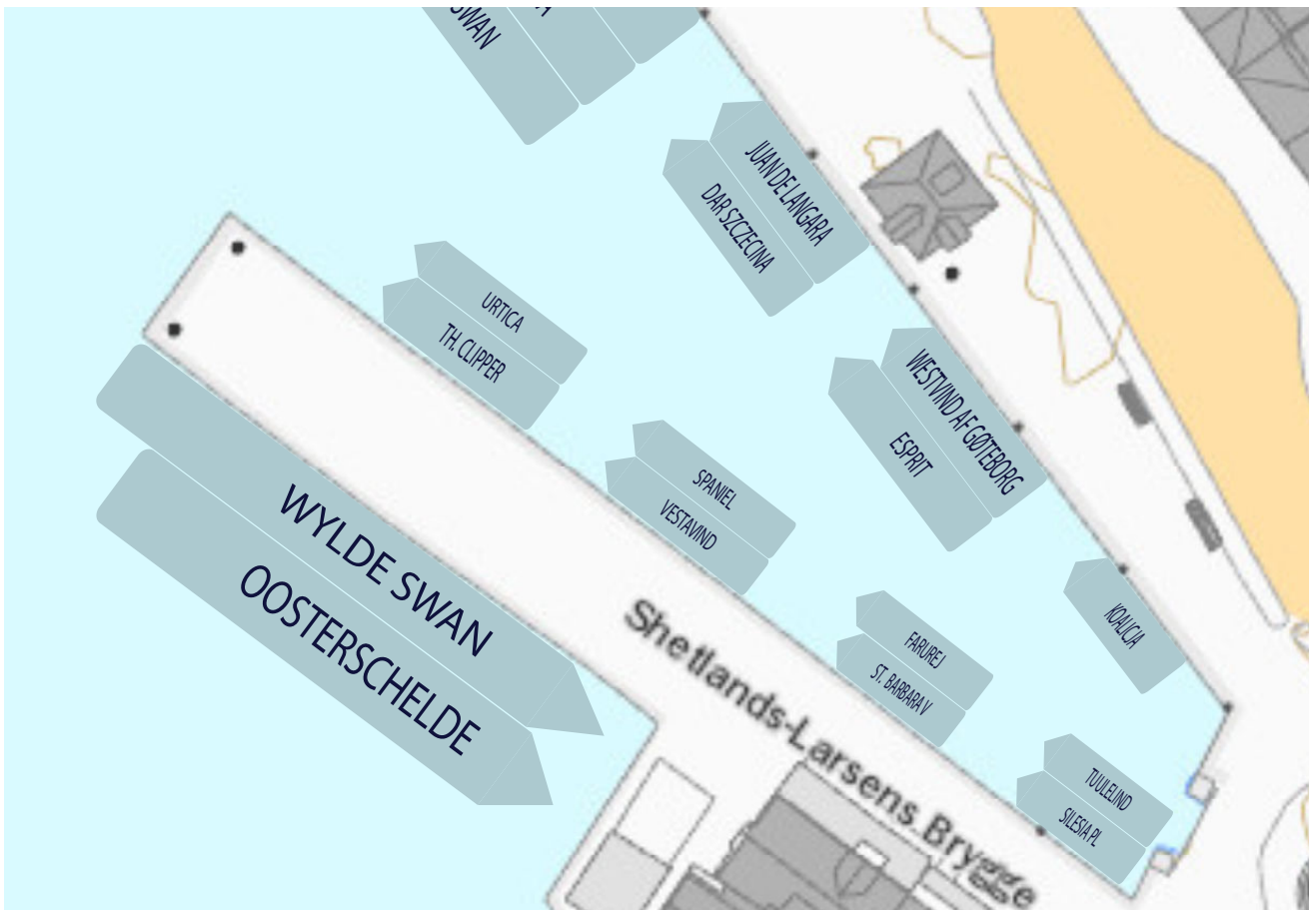
See following pages.

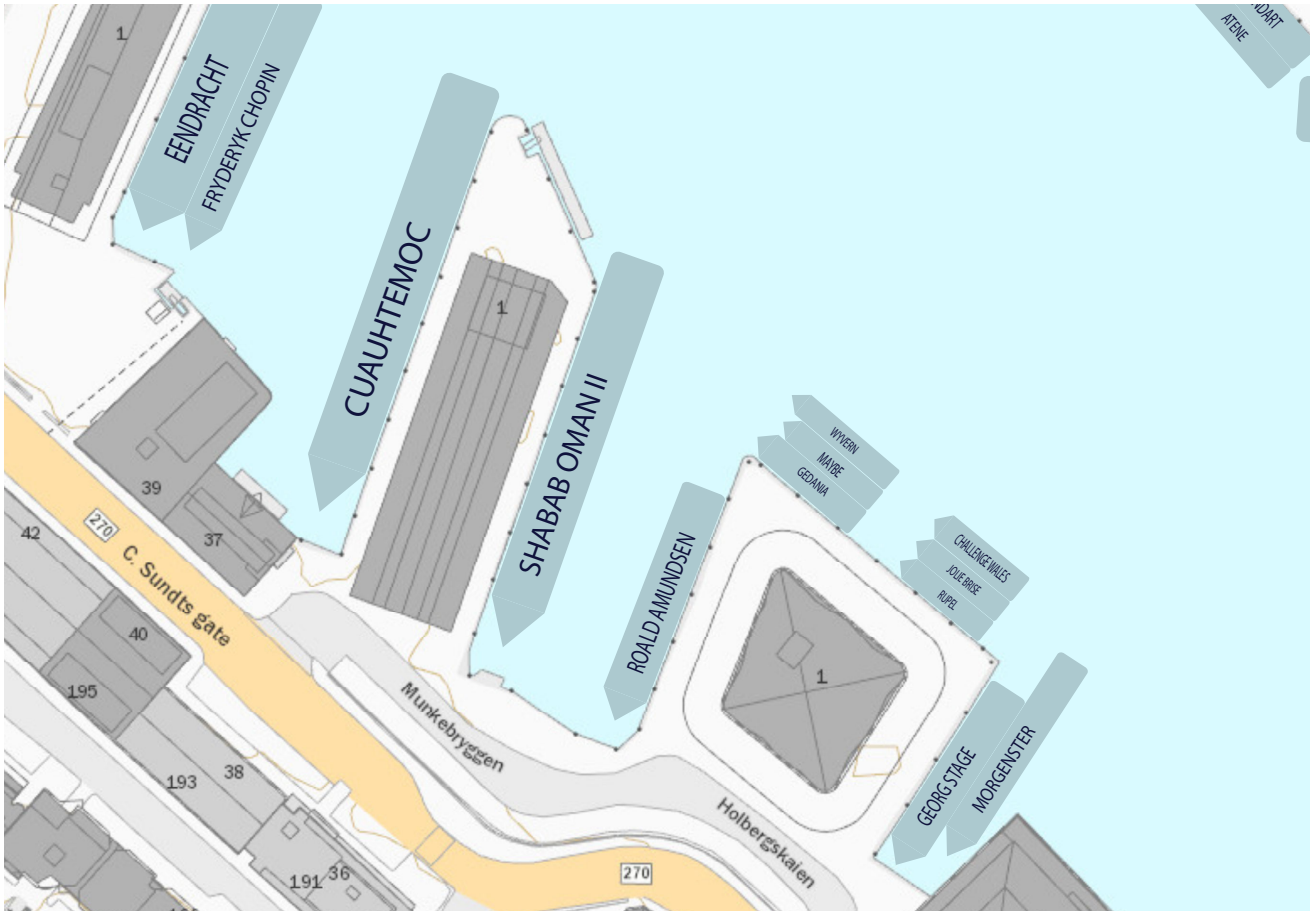


BERTHING PLAN









4. TOWN PLAN

4.1 LIST OF IN PORT FACILITIES:

Technical Helpdesk
Post Office
Banks / ATMs
Crew Center
Volunteer Center
Liaison Center
Venues for events
Coach pick up & drop-off point
Crew Parade Route
Prize-giving venue
Captains' Dinner venue
Laundry facilities
Showers & toilets
STI Race Office
Harbour Master's Office
Churches
Etc.

4.2 TOWN INFORMATION

Currency

The currency in Norway is Norwegian Kroner (NOK)
- €10 converts to approximately 98 NOK
- £10 converts to approximately 113 NOK

ATMs – Banking Service

Most restaurants, shops & taxis accept credit and debit cards. Several cash points are located on the main square and close to "Fisketorget".

Currency Exchange

Forex Bank
Strandkaaien 2B, 5013 Bergen.

Pharmacies

- Ditt Apotek Bryggen
Vetrlidsallmenningen, 5014 Bergen.
Opening hours:
Monday – Saturday: 10:00-18:00.
- Vitusapotek Nordstjernen Bergen
Bergen Storsenter, strømgaten 8, 5015 Bergen.
Opening hours:
Monday – Saturday: 08:00-18:00.
Sunday: 13:00-23:00.

Shopping

Opening hours:
Monday - Friday: 10:00 – 21:00.
Saturday: 10:00 – 18:00.
Supermarkets are open until 21:00 or 23:00 depending on the supermarket.
Sunday: Most shops are closed, apart from some local supermarkets.

Churches

- Lutheran:
Mariakirken/ St Mary's Church
Dreggsallmenningen 15, 5003 Bergen.
- Catholic:
St. Paul Menighet / Catholic Parish of St. Paul
Nygårdsgaten 3, 5015 Bergen, Norway.

Transportation:

Taxis

Bergen Taxi: +47 07000.

Busses

Plan your trip on regional and city busses via <https://www.skyss.no/> or download the Skyss app - for tickets Skyss Billetter and Skyss Reise is for route planning.

Transfer from the airport

Where possible, Tall Ships Races Bergen will provide mini-buses/ coaches for crew transfer from the airport to the port, however if there are no coaches at the airport the last stop on the airport bus, Flybussen, stops by the harbour in Dreggsallmenningen. A single ticket costs 115 NOK. Payment can be made on the bus or via the app (Flybussen).

Bars, restaurants and cafes

There are many bars, restaurants and cafes in close proximity to the harbour. Please note that it is illegal to serve alcohol to people under the age of 18 in Norway. Hard spirits are only served to those over 20.

Tourist Information

Visit Bergen, Strandkaaien 3, 5808 Bergen
<https://en.visitbergen.com>.

Post office

Bergen Sentrum postkontor
Småstrandgaten 3 (Xhibition), 5014 Bergen.

Opening hours:

Monday – Friday: 07:00-18:00.
Saturday: 10:00 – 15:00.

4.3 A TOWN PLAN IS ATTACHED OVERLEAF

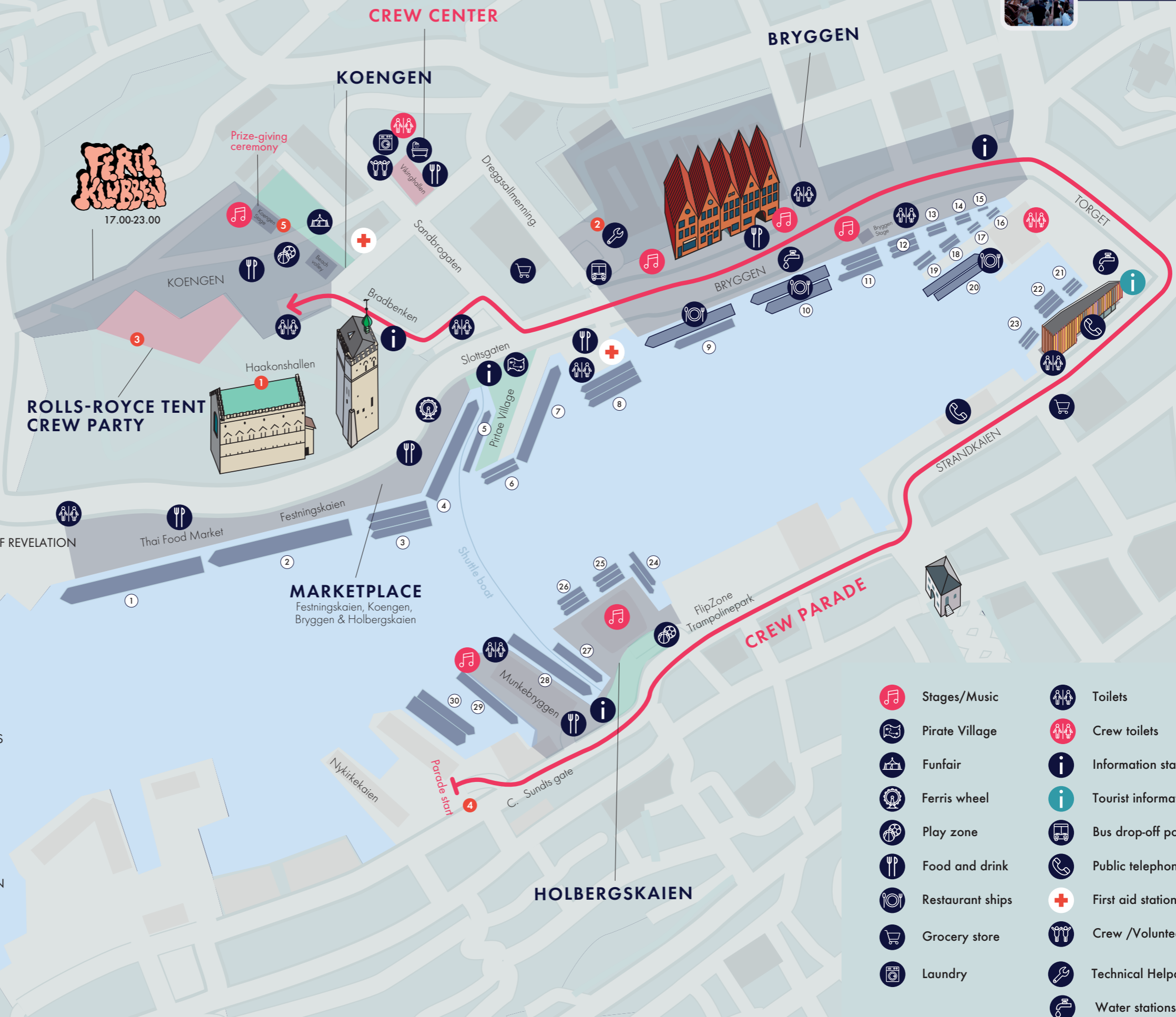


DOWNLOAD THE APP FOR FULL PROGRAMME AND SHIP OVERVIEW

Tall Ships Races Bergen 2019

- 1 MIR
- 2 DAR MŁODZIEZY
- 3 LORD NELSON
- 3 DEN STORE BJØRN
- 3 POGORIA
- 4 CISNE BRANCO
- 5 GROSSHERZOGIN ELISABETH
- 6 SHTANDART
- 6 ATENE
- 7 STATSRAAD LEHMKUHL
- 8 LOA
- 8 BLUE CLIPPER
- 8 JOHANN SMIDT
- 9 CHRISTIAN RADICH
- 9 GULDEN LEEUW
- 10 SØRLANDET
- 10 ALEXANDER VON HUMBOLDT II
- 11 LOYAL
- 11 GRATITUDE
- 11 SKONNERTEN JYLLAND
- 12 ATYLA
- 12 URANIA
- 12 SWAN
- 13 JUAN DE LANGARA
- 13 DAR SZCZECINA
- 14 WESTVIND AF GÖTEBORG
- 14 ESPRIT
- 15 KOALICJA
- 16 SILESIA PL
- 16 TUULELIND
- 17 ST. BARBARA V
- 17 FARUREJ
- 18 SPANIEL
- 18 VESTAVIND
- 19 THERMOPYLAE CLIPPER
- 19 URTICA
- 20 WYLDE SWAN
- 20 OOSTERSHELDE
- 21 BELFER
- 21 OCEAN SCOUT
- 21 AGLAIA

- 22 MORNING STAR OF REVELATION
- 22 ALEXA
- 22 RONA II
- 23 BIES
- 23 KLITTA
- 23 BETTY
- 24 GEORG STAGE
- 24 MORGENSTER
- 25 CHALLENGE WALES
- 25 JOLIE BRISE
- 25 RUPEL
- 26 GEDANIA
- 26 MAYBE
- 26 WYVERN
- 27 ROALD AMUNDSEN
- 28 SHABAB OMAN II
- 29 CUAUHTEMOC
- 30 EENDRACHT
- 30 FRYDERYK CHOPIN



- Stages/Music
- Pirate Village
- Funfair
- Ferris wheel
- Play zone
- Food and drink
- Restaurant ships
- Grocery store
- Laundry
- Toilets
- Crew toilets
- Information stands
- Tourist information
- Bus drop-off point
- Public telephone
- First aid stations
- Crew /Volunteer center
- Technical Helpdesk
- Water stations

5. CAPTAIN'S PROGRAMME



5.1 CAPTAINS' DINNER 1

Date: Sunday 21 July 2019.

Timings:

19:00 - drinks reception
19:45 - take seats in banqueting hall
20:00 - dinner served
23:00 - close

Location: (see map)

Haakonshallen, Bergenhus 10, 5003 Bergen.

Transport arrangements:

Transportation is not provided as Haakonshallen is a short walk from any location in the port of Bergen.

Invitation:

Captain of the vessel + 1 guest

5.2 AFTERGUARD (SHIPS OFFICERS') PARTY

There is no afterguard party in Bergen, but we invite officers & all crew to gather in the Statsraaden Bar & Reception (located beside & run by the Statsraad Lehmkuhl foundation).

5.3 CAPTAINS' BRIEFING 2

Date: Tuesday 23 July 2019.

Time: 16:00 - 17:00.

Location (see map):

Kongesal 1 & 2
Radisson Blu Bryggen
Dreggsallmenningen 1, 5003 Bergen.

Transport arrangements:

Transportation is not provided as the Radisson Blu hotel is a short walk from any location in the port of Bergen.

6. CREW PROGRAMME

6.1 CREW PARTY

3

Date: Monday 22 July 2019.
Time: 19:00 - 23:00.

Location (see map):
Koengen marquee/tent
Vågen, 5003 Bergen.

Transport arrangements:
Transportation is not provided as Koengen is a short walk from any location in the port of Bergen.

Entry system:
The liaison officer assigned to your ship will take you to the party.

Admission for crew members are via wristbands only. As the captain of your ship you should collect and sign for the wristbands required from Amanda Goodden in the Race Office (Radisson Blu Hotel, Bryggen). Room: Forstuen. Under 18s will receive a white wristband, and over 18s will receive a blue wristband.

Each wristband has three numbered tabs, two for free drinks, and one for your meal.



You are not allowed to bring your own alcohol into the crew party.

Zone 1:

1. Shabab Oman II
2. Wylde Swan
3. Jolie Brise
4. Loa
5. Cisne Branco
6. Challenge Wales
7. Belfer
8. Tuulelind

Zone 2:

1. Statsraad Lehmkuhl
2. Georg Stage
3. Morgenster
4. St Barbara V
5. Gratitude
6. Swan
7. Juan de Langara
8. Rona II

Zone 3:

1. Alexander von Humboldt II
2. Christian Radich
3. Oosterschelde
4. Betty
5. Farurej
6. Gedania
7. Dar Młodzieży
8. Klitta

Zone 4:

1. Cuauhtemoc
2. Fryderyk Chopin
3. Maybe
4. Silesia.pl
5. Vestavind
6. Morning Star of Revelation

Zone 5:

1. Sørlandet
2. MIR
3. Grossherzogin Elisabeth
4. Den Store Bjørn
5. Atene
6. Urtica
7. Spaniel
8. Westvind af Goteborg

Zone 6:

1. Gulden Leeuw
2. Eendracht
3. Koalicja
4. Johan Smidt
5. Bies
6. Ocean Scout
7. Urania
8. Dar Szczecina

Zone 7:

1. Pogoria
2. Lord Nelson
3. Loyal
4. Roald Amundsen
5. Atyla
6. Rupel
7. Alexa

Zone 8:

1. Shtandart
2. Wyvern
3. Skonnerten Jylland
4. Blue Clipper
5. Aglaia
6. Esprit
7. Thermopylae Clippe

6.2 CREW PARADE

4

Crew Parade and Prize-giving ceremony

Monday 22 July 14:40 - 17:15:

- 14:40-15:00 Meet with your LO in front of the ship and go to the line-up area at Nykirkekaien.
- 15:00 Muster at Nykirkekaien in the correct zone for your ship, as listed below.
- 15:30 Crew Parade (2 km.). The parade goes around the harbour and ends at Koengen.
- 16:30 Parade reaches Koengen.
- 16:30 - 17:15 Prize-giving ceremony.

There will be a sign with the name of your ship. Please line up in the correct zone for your ship, listed below:

6.3 PRIZE-GIVING CEREMONY

5

Date: Monday 22 July 2019.
Time: 16:30 - 17:15.

Location (see map):

Koengen stage
Vaagen, 5003 Bergen.

Procedure and format:

The prize-giving ceremony will begin with a short speech by Bergen's Mayor.

Following the speech, prizes will be given out on the Koengen stage for the winners of the sports tournaments, individual sporting events, best dressed ship in port, best contribution to the environment in the cruise in company leg of the 2019 Tall Ships Races, most international ship, most spectacular arrival in port etc.

6.4 CREW ACTIVITIES WITH REGISTRATION

Crew must enrol for the activities listed below.

How to enrol:

- Your ship makes a registration for all interested persons via the paper form in the Captains' Manual and pass this on to your ship's Liaison Officer
- Enrol at the crew center

Deadline for enrolment for all activities:
Sunday 21 July by 18.00.

Most sports activities are within walking distance from the ships. Transport is provided for activities that are slightly further away (please read the description of the activity for further details and time and location of pick-up).

All sports competitions will be held on Monday 22 July.

We invite all trainees to meet at Vikinghallen and make their way with the activity leader for each event from there.

MONDAY 22 JULY

Beach Volleyball tournament

- When: Monday at 09:30-13:30
- How many: Maximum of 5 players on each team (4 players on the court at the time and one substitute)
- Where: Skansemyren Sport Arena, Nordre Skansemyren, 5019 Bergen. All players will be picked up at Vikinghallen (crew center) at 08.45

Description: Compete against the other ships in a game of beach volleyball. Show up at the location and receive your game schedule. No set points on the court, but players must serve in order. One substitution per team, per set.

Street Basketball tournament

- When: Monday at 09:30-13:30
- How many: 5 players on each team (3 players on the court at the time).
- Where: Bryggen

Description: Compete against the other ships in a game of street basket. Show up at the location and receive your game schedule. This is a knockout tournament. Official basketball rules apply.

Football tournament

- When: Monday at 09:30-13:30
- How many: Maximum of 7 players on each team, including a goalkeeper and 6 field players. Teams may have a total of 12 players in total (including substitutes).
- Where: Møhlenpris Idrettsplass, Professor Hansteens gate 86, 5006 Bergen. All players will be picked up at Vikinghallen (crew center) 08:45, and as a warm-up will walk to the pitch.

Description: Traditional football rules. Show up at the location and receive your game schedule. Each game is played for 2x 10 minutes. The offside rule will not be used, and you will be free to change substitutes as you wish. This is a knockout tournament.

Tug of War

- When: Monday at 11:30-13:30
- How many: Teams consist of a maximum of 12 persons.
- Where: Bryggen

Description: All ships are invited to the traditional tug of war competition. Each match consists of 3 pulls. The team winning 2 pulls is the winner. This is a knockout tournament

"Stoltzekleiven up" Steep Hill Running competition

- When: Monday 10:00-13:00
- How many: Maximum of 10 participants from each ship (individual competition). Prizes for fastest male and fastest female.
- Where: Stoltzekleiven, 5014 Bergen (20 mins walk from Bryggen). All runners will be picked up at Vikinghallen (Crew Centre) and as warm up will walk (c. 15 minutes) to the start point.

Description: Steep hill competition. Uphill race with a 313m ascent and approximately 720 stairs.

Table Tennis tournament

- When: Monday at 09:30-13:30
- How many: The tournament will be a combination of single, double matches and knockout matches.
- Where: Laksevåg BTK - Leirvikåsen 35. A car will take participants to the venue. Meet at 09:00 at Vikinghallen (crew center).

Description: Compete against the other ships in a game of table tennis.

Chess tournament

- When: Monday at 10:00-13:30.
- How many: Individual participants. Maximum of 10 participants per ship.
- Where: Festningskaaien (opposite MIR).

Description: Compete against the other trainees in a game of chess. Show up at the location and receive your game schedule. Official chess rules apply.



7. CITY CULTURAL PROGRAMME



For entrance to cultural activities below, crew and trainees should show their Tall Ships Races wristband.

BERGEN MARITIME MUSEUM

Haakon Sheteligsplass, 5007 Bergen.
Opening hours: 10:00 - 17:00.
Free entrance.

BERGEN AQUARIUM

Nordnesbakken 4, 5005 Bergen.
Opening hours: 10:00 - 18:00.
Entrance: NOK 175 (reduced price).

HAAKONS' HALL AND ROSENKRANTZ TOWER

Bergenshus Fortress.
Opening hours: 10:00 - 16:00.
Free entrance.

BRYGGEN MUSEUM

Dreggsalmening 3.
Opening hours: 10:00 - 16:00.
Free entrance.

GAMLE BERGEN/ OLD BERGEN MUSEUM

Nyhavnsveien 4, Elsero.
Opening hours: 09:00 - 16:00.
Entrance: Reduced price.
Bus number 3, 4, 5, 6 or 83, Buss stop: Gamle Bergen.

THE LEPROSY MUSEUM

Kong Oscarsgate 59.
Opening hours: 11:00 - 15:00.
Entrance: Reduced price.

FLØIBANEN

Vetrlidsallmenningen 23 A 5014 Bergen.
Opening hours: 07:30 - 23:00.
Ticket: NOK 65 round trip (reduced price).

BERGEN CINEMA

Neumannsgt. 3 5015 Bergen.
Opening hours: 10:30 - 21:30.
Ticket: NOK 70-80 (reduced price).
See which movies are playing here: bergenkino.no.

ADO ARENA - INDOOR POOL

Lungegårdskaian 40, 5015 Bergen.
Opening hours: 06:15 - 21:00.
Entrance: NOK 20 age 15-19 and NOK 32,5 age 20+
Disabled-friendly and accessible.

NORDNES - OUTDOOR POOL

Nordnesparken 30, 5005 Bergen.
Opening hours: 07:00 - 20:00.
Entrance: NOK 20 age 15-19 and NOK 32,5 age 20+

NORWEGIAN FISHERIES MUSEUM

Sandviksboder 23, 5035 Bergen.
Opening hours: 11:00 - 15:00.
Free entrance.

8. LIAISON SYSTEM



8.1 LIAISON SYSTEM – Explanation of system

The liaison system is made up of volunteers.

There are two types of volunteers:

1. Liaison officers and 2. Crew Friends.

The liaison officers have knowledge of the port and the foremost task is to ensure that ships and crew have a great time in port and have what they need.

Each ship is paired with at least one liaison officer to help with any queries the captain and crew may have in port. Larger vessels (Class A & B) will be allocated 2 liaison officers per ship.

Your liaison officer should provide you with their contact information when you first meet in port on Sunday 21 July.

8.2 NAME & CONTACT DETAILS OF CHIEF LIAISON OFFICER (CLO)

Trond Småberg

Chief Liaison Officer

Tel: +47 488 909 12

Email: tssmaberg48@gmail.com

8.3 LOCATION OF LIAISON OFFICE (See map)

The main office for the CLO and LOs will be at Vikinghallen. Most of the liaison officers' time will be spent on board or at Tall Ships Races Bergen events where the ship's crew and trainees will be attending (crew party, crew parade).

Vikinghallen
Øvre Dreggsallmenningen 7
5003 Bergen

8.4 CREW FRIENDS – Explanation of system

Crew Friends are assigned to ships to assist trainees specifically.

8.5 GROUP LEADER ALLOCATION TO SHIPS

Liaison officers have been allocated to all vessels. They will provide with their contact details when they meet you.

The group leaders are allocated to ships as follows:

SHIP	NAME OF GROUP LEADER	EMAIL	MOBILE
AGLAIA	Jan Guttormsen	(+47) 40 76 99 59	jan-gut@online.no
ALEXA	Eva Van Der Heide	(+47) 45 22 25 80	evaheide@yahoo.no
ALEXANDER VON HUMBOLDT II	Hans Steensaeth	(+47) 90 29 29 48	hans.steensaeth@bkkfiber.no
ATENE	Frode Helleboe	(+47) 93 43 54 39	frode@ricks.no
ATYLA	Frode Helleboe	(+47) 93 43 54 39	frode@ricks.no
BELFER	Olav Arne Drønen	(+47) 97 66 05 18	oladro@gmail.com
BETTY	Trygve Dāvøy	(+47) 99 51 80 52	tryg-d@online.no
BIES	Frode Møvik	(+47) 95 14 41 10	fmovik@broadpark.no
BLUE CLIPPER	Tone Iversen	(+47) 96 62 16 25	toniversen@gmail.com
CHALLENGE WALES	Frode Møvik	(+47) 95 14 41 10	fmovik@broadpark.no
CHRISTIAN RADICH	Otto Aksdal	(+47) 99 53 77 63	liv-veka@online.no
CISNE BRANCO	Olav Arne Drønen	(+47) 97 66 05 18	oladro@gmail.com
CUAUHTEMOC	Eva Van Der Heide	(+47) 45 22 25 80	evaheide@yahoo.no
DAR MŁODZIEZY	Otto Aksdal	(+47) 99 53 77 63	liv-veka@online.no
DAR SZCZECINA	Kurt Arvesen	(+47) 47 02 24 79	kurarves@gmail.com
DEN STORE BJØRN	Kurt Arvesen	(+47) 47 02 24 79	kurarves@gmail.com
EENDRACHT	Kurt Arvesen	(+47) 47 02 24 79	kurarves@gmail.com
ESPRIT	Eva Van Der Heide	+47 45 22 25 80	evaheide@yahoo.no
FARUREJ	Britt M.R. Thorsen	(+47) 90 69 24 65	bmr@kinarsvik.net
FRYDERYK CHOPIN	Tone Iversen	(+47) 96 62 16 25	toniversen@gmail.com
GEDANIA	Terje Omdahl	(+47) 97 15 00 89	te-omd@online.no
GEORG STAGE	Terje Omdahl	(+47) 97 15 00 89	te-omd@online.no
GRATITUDE	Terje Omdahl	(+47) 97 15 00 89	te-omd@online.no
GROSSHERZOGIN ELISABETH	Britt M.R. Thorsen	(+47) 90 69 24 65	bmr@kinarsvik.net
GULDEN LEEUW	Frode Møvik	(+47) 95 14 41 10	fmovik@broadpark.no
JOHANN SMIDT	Frode Helleboe	(+47) 93 43 54 39	frode@ricks.no
JOLIE BRISE	Kurt Arvesen	(+47) 47 02 24 79	kurarves@gmail.com
JUAN DE LANGARA	Claudia Claire	(+47) 92 62 40 06	claudia2305_@hotmail.com

KLITTA	Trygve Dávøy	(+47) 99 51 80 52	tryg-d@online.no
KOALICJA	Claudia Claire	(+47) 92 62 40 06	claudia2305_@hotmail.com
LOA	Eva Van Der Heide	(+47) 45 22 25 80	evaheide@yahoo.no
LOYAL	Otto Aksdal	(+47) 99 53 77 63	liv-veka@online.no
LORD NELSON	Jan Guttormsen	(+47) 40 76 99 59	jan-gut@online.no
MAYBE	Claudia Claire	(+47) 92 62 40 06	claudia2305_@hotmail.com
MIR	Hans Steensaeth	(+47) 90 29 29 48	hans.steensaeth@bkkfiber.no
MORGENSTER	Claudia Claire	(+47) 92 62 40 06	claudia2305_@hotmail.com
MORNING STAR OF REVELATION	Frode Møvik	(+47) 95 14 41 10	fmovik@broadpark.no
OCEAN SCOUT	Britt M.R. Thorsen	(+47) 90 69 24 65	bmr@kinarsvik.net
OOSTERSCHELDE	Trygve Dávøy	(+47) 99 51 80 52	tryg-d@online.no
POGORIA	Jan Guttormsen	(+47) 40 76 99 59	jan-gut@online.no
ROALD AMUNDSEN	Frode Helleboe	(+47) 93 43 54 39	frode@ricks.no
RONA II	Anne-Britt Holmedal	(+47) 94 15 13 51	anholme@equinor.com
RUPEL	Frode Helleboe	(+47) 93 43 54 39	frode@ricks.no
SHABAB OMAN II	Anne-Britt Holmedal	(+47) 94 15 13 51	anholme@equinor.com
SHTANDART	Olav Arne Drønen	(+47) 97 66 05 18	oladro@gmail.com
SILESIA.PL	Tone Iversen	(+47) 96 62 16 25	toniversen@gmail.com
SKONNERTEN JYLLAND	Britt M.R. Thorsen	(+47) 90 69 24 65	bmr@kinarsvik.net
SØRLANDET	Trygve Dávøy	(+47) 99 51 80 52	tryg-d@online.no
SPANIEL	Otto Aksdal	(+47) 99 53 77 63	liv-veka@online.no
STATSRAAD LEHMKUHL	Kurt Arvesen	(+47) 47 02 24 79	kurarves@gmail.com
ST BARBARA V	Terje Omdahl	(+47) 97 15 00 89	te-omd@online.no
SWAN	Terje Omdahl	(+47) 97 15 00 89	te-omd@online.no
THERMOPYLAE CLIPPER	Trygve Dávøy	(+47) 99 51 80 52	tryg-d@online.no
TUULELIND	Frode Helleboe	(+47) 93 43 54 39	frode@ricks.no
URANIA	Frode Møvik	(+47) 95 14 41 10	fmovik@broadpark.no
URTICA	Claudia Claire	(+47) 92 62 40 06	claudia2305_@hotmail.com
VESTAVIND	Hans Steensaeth	(+47) 90 29 29 48	hans.steensaeth@bkkfiber.no
WESTVIND AF GOTEBOG	Eva Van Dver Heide	(+47) 45 22 25 80	evaheide@yahoo.no
WYLDE SWAN	Anne-Britt Holmedal	(+47) 94 15 13 51	anholme@equinor.com
WYVERN	Hans Steensaeth	(+47) 90 29 29 48	hans.steensaeth@bkkfiber.no

9. SHIP SERVICES

9.1 FUEL

Exxon/Esso Oil terminal, Skaalevik (N 60°23,755' E 005°14,064').

Approx. 2 nautical miles before Port of Bergen. Vessels are expected to bunker before entering Port of Bergen (Vaagen). No guarantees are given regarding bunkering while alongside Vaagen.

Bunkering stations close to Bergen; (Approx. 2 nm W of Vaagen). Esso Skaalevik. Tel +47 55 51 13 00 /+47 55 51 13 07

9.2 WATER

Freshwater will be available by hose at all berths throughout the visit. Freshwater is provided free of charge, but economy of use is requested. Ships should use their own hoses as far as possible, and the crews to fill their own water tanks. Filling of tanks should be done at night or in the morning to avoid hoses on the quay.

9.3 ELECTRICITY

Electricity is available free of charge on most quaysides. The Port will try to get as many vessels on shore power as possible. Please note that we will not be able to serve all vessels with shore power.

9.4 WASTE

It is prohibited to discharge from tanks whilst in Norwegian waters. The Port of Bergen prides itself to be environmentally aware. Please help us to keep the harbour and city tidy!

Garbage is not to be discharged overboard. Vessels are expected to sort out all garbage in the following categories: Plastic, paper and common waste and empty in the appropriate bins on land.

Any discharge of slop/greywater etc may be ordered by via the Technical Helpdesk.

9.5 GAS

Arranged via Technical Helpdesk

9.6 REPAIRS

Arranged via Technical Helpdesk

9.7 STORES

A few local stores selling items for ships and boats can be found located near the centre of Bergen. Some are listed below:

MarineSenteret Bergen A/S
Sjøgaten 6
5035 Bergen

Maritim Båtutstyr
Damsgårdsveien 143
5160 Laksevåg

9.8 SHIP AGENTS

Grieg Logistics (same contact details of Technical Helpdesk)

List of services typically provided (but not limited to):

- Gas
- Greywater
- Hazardous waste
- Ship Supplies
- Repairs; engine, hull, sails and other
- ROV-inspections

Grieg Logistics will have card payment facilities on site at their office in the Radisson Blu hotel. All major cards are accepted via the iZettle payment system: Mastercard, Visa, Visa Electron, Maestro, JCB, American Express, Union Pay, Apple Pay, Google Pay, Samsung Pay, Discover/Diner's Card.

10. CREW SERVICES

10.1 CREW CENTER

Location (map ref.)

Vikinghallen
Øvre Dreggsallmenningen 7
5003 Bergen

Facilities

The crew center is your “home” outside of the ship. Here you can relax with other crew members, do your laundry or use the internet. The crew center is only allowed for crew members with The Tall Ships Races wristband.

Opening hours: 07:00-22:00

In the crew center you will find:

- Internet access
- Games
- Rest area
- Free coffee
- Toilet facilities
- Shower facilities – Free of charge. Remember to bring your own towel and soap.
- Laundry facilities - Free of charge. Please request laundry detergent from the staff in crew center. Please bring your own if you have any allergies.

Alternative shower facilities are available in Zachariasbryggen only for Class C & D vessels. Please show your Tall Ships Races wristband for access.

10.2 FIRST AID

The Red Cross (Røde Kors) will be located in Bryggen & Koenigen throughout the festival if you require first aid.

For accidents and emergency, please see the following information:

Emergency numbers:

Fire department: 110
Police: 112
Ambulance: 113

Police station:

Allehelgens gate 6, 5016 Bergen +47 55 55 63 00.

Emergency ward:

+47 116 117
Legevakten - Solheimsgaten 9, 5058 Bergen.

Dentist

There are a few dentists that offer emergency dental services in Bergen. e.g.
Tannklinikken i Dreggen AS
Dreggsallmenningen 10-12, 5003 Bergen
Tel: +47 55 31 72 10
Opening hours: Mon - Fri 07.30 - 15.30

The Technical Helpdesk

Can also be contacted to help if it is not an emergency.

Emergency abuse/ sexual violence report helpline

Ring the helpline if you have experienced the following:

- violence or witnessing violence.
- sexual abuse.

Tel: +47 55 36 11 80

Opening hours: Monday - Friday: 08:00 -02: 00, Saturday - Sunday: 17:00 - 02: 00.

Outside opening hours, contact the police on Tel: 02800.
Address: Bergen sentrum politistasjon, Allehelgensgate 6, 5016 Bergen.

10.3 LAUNDRY FACILITIES

Location (map ref):

Vikinghallen (crew centre)

Description for use:

Free of charge. Please request laundry detergent from the staff in crew centre. Please bring your own if you have any allergies.

10.4 TOILETS AND SHOWERS

Location (map ref):

- Crew center (Vikinghallen)
- Zachariasbryggen (please show your wristband)

Free of charge. Remember to bring your own towel and soap/ body wash/ shampoo that you require.

11. FORMS



11.1 CUSTOMS AND IMMIGRATION - SAFESEANET NORWAY

All customs and immigration information must be submitted via SafeSeaNet Norway.

<https://shiprep.no/ShipRepWebUI/Pages/User/Start.aspx>

A user manual can be found online: <https://shiprep.no/ShipRepWebUI/Documents/usermanual.pdf>

Problems with SafeSeaNet Norway?

Contact SafeSeaNet Norway Support 24/7:

Tel: + 47 35 57 26 25

Email: support.ssnn@kystverket.no

Military vessels unable to use SafeSeaNet are requested to contact naval base Haakonsvern.

Email: navbashaak@mil.no

From Fredrikstad to Bergen – remember to update your information in SafeSeaNet.

Ship Services

For all services and technical help, please use our Technical Helpdesk located at the Radisson Blu Hotel, Bryggen. Please refer to page 6 of the manual for their contact information.

11.2 CREW ACTIVITIES

Please find the sign up sheets for the sport competitions for you to fill in and return to the crew center or your liaison officer by Sunday 21 July by 18.00 on the next few pages.

CREW ACTIVITIES

“STOLTZEKLEIVEN UP” STEEP HILL RUNNING COMPETITION

Please complete this form and hand it to your liaison officer or in person to the desk at the crew center ahead of the specified deadline for enrollment.

When: Monday at 10:00 – 13:00 Deadline for enrollment: Sunday 21 July by 18:00 How many: Maximum of 10 participants from each ship (individual competition) Where: Stoltzekleiven, 5014 Bergen (15 mins walk from Bryggen). All runners will be picked up at Vikinghallen (Crew Center) 09:30 and as a warm-up will walk (c.15 minutes) to the start point. Description: Steep hill competition. Uphill race with a 313m ascent and approximately 720 stairs.
Name of ship:

Names of participants:
1.
2.
3.
4.
5.
6.
7.
8.
9.
10.

**"STOLTZEKLEIVEN UP" STEEP
HILL RUNNING COMPETITION**

CREW ACTIVITIES

BEACH VOLLEYBALL TOURNAMENT

Please complete this form and hand it to your liaison officer or in person to the desk at the crew center ahead of the specified deadline for enrollment.

<p>When: Monday at 09:30 – 13:30</p> <p>Deadline for enrollment: Sunday 21 July by 18:00</p> <p>How many: Maximum 5 players on each team (4 players on the court at the time and one substitute)</p> <p>Where: Skansemyren Sport Arena, Nordre Skansemyren, 5019 Bergen</p> <p>Description: Compete against the other ships in a game of beach volleyball. All players will be picked up at Vikinghallen (Crew Center) at 08:45. No set points on the court, but players must serve in order. One substitution per team, per set.</p> <p>If your ship cannot participate with a full team, you can sign them up anyway and we will make mixed teams</p>
<p>Name of ship:</p>

	Names of players
Team name 1:	1.
	2.
	3.
	4.
	5.
Team name 2:	1.
	2.
	3.
	4.
	5.
Team name 3:	1.
	2.
	3.
	4.
	5.

**BEACH VOLLEYBALL
TOURNAMENT**

CREW ACTIVITIES

STREET BASKETBALL TOURNAMENT

Please complete this form and hand it to your liaison officer or in person to the desk at the crew center ahead of the specified deadline for enrollment.

<p>When: Monday at 09:30 – 13:30 Deadline for enrollment: Sunday 21 July by 18:00 How many: Maximum 5 players on each team (3 players on the court at a time) Where: Bryggen Description: Compete against the other ships in a game of street basket. Show up at the location and receive your game schedule. This is a knockout tournament. Official basketball rules apply.</p> <p>If your ship cannot participate with a full team, you can sign them up anyway and we will make mixed teams</p>
<p>Name of ship:</p>

	Names of players
Team name 1:	1.
	2.
	3.
	4.
	5.
Team name 2:	1.
	2.
	3.
	4.
	5.
Team name 3:	1.
	2.
	3.
	4.
	5.

**STREET BASKETBALL
TOURNAMENT**

CREW ACTIVITIES

TUG OF WAR

Please complete this form and hand it to your liaison officer or in person to the desk at the crew center ahead of the specified deadline for enrollment.

When: Monday at 11:30 – 13:30

Deadline for enrollment: Sunday 21 July by 18:00

How many: Minimum of 8 per team and maximum of 10 per team.

Where: Bryggen

Description: All ships are invited to the traditional tug of war competition. Each match consists of 3 pulls. The team winning 2 pulls is the winner. This is a knockout tournament.

If your ship cannot participate with a full team, you can sign them up anyway and we will make mixed teams

Name of ship:

	Names of players
Team name 1:	1.
	2.
	3.
	4.
	5.
	6.
	7.
	8.
	9.
	10.
Team name 2:	1.
	2.
	3.
	4.
	5.
	6.
	7.
	8.
	9.
	10.

Team name 3:	1.
	2.
	3.
	4.
	5.
	6.
	7.
	8.
	9.
	10.

TUG OF WAR

CREW ACTIVITIES FOOTBALL TOURNAMENT

Please complete this form and hand it to your liaison officer or in person to the desk at the crew center ahead of the specified deadline for enrollment.

<p>When: Monday at 09:30 – 13:30 Deadline for enrollment: Sunday 21 July by 18:00 How many: Maximum of 12 players on a team (7 players on at a time including the goalkeeper). Where: Møhlenpris Idrettsplass, Professor Hansteens gate 86, 5006 Bergen. Description: Traditional football rules. All players will be picked-up at Vikinghallen (Crew Center) at 08:45, and as a warm-up will walk to the pitch. Each game is played for 2x 10 minutes. The offside rule will not be used, and you will be free to change substitutes as you wish. This is a knockout tournament.</p> <p>If your ship cannot participate with a full team, you can sign them up anyway and we will make mixed teams</p>
<p>Name of ship:</p>

	Names of players
Team name 1:	1.
	2.
	3.
	4.
	5.
	6.
	7.
	8.
	9.
	10.
	11.
	12.
Team name 2:	1.
	2.
	3.
	4.
	5.
	6.

	7.
	8.
	9.
	10.
	11.
	12.
Team name 3:	1.
	2.
	3.
	4.
	5.
	6.
	7.
	8.
	9.
	10.
	11.
	12.

FOOTBALL TOURNAMENT

CREW ACTIVITIES

TABLE TENNIS TOURNAMENT

Please complete this form and hand it to your liaison officer or in person to the desk at the crew center ahead of the specified deadline for enrollment.

When: Monday at 09:30 – 13:30

Deadline for enrollment: Sunday 21 July by 18:00

How many: Individual participants. Maximum of 16 participants per ship. You can make your own double teams on the day or specify below.

Where: Laksevåg BTK - Leirvikåsen 35. Meet up at the Vikinghallen (Crew Center) 09:00. Cars will take participants to the venue.

Description: The tournament will be a combination of single, double matches and knockout matches.

Name of ship:

Names of participants:

1.

2.

3.

4.

5.

6.

7.

8.

9.

10.

11.

12.

13.

14.

15.

16.

TABLE TENNIS TOURNAMENT

CREW ACTIVITIES CHESS TOURNAMENT

Please complete this form and hand it to your liaison officer or in person to the desk at the crew center ahead of the specified deadline for enrollment.

When: Monday at 10:00 – 13:30 Deadline for enrollment: Sunday 21 July by 18:00 How many: Individual participants. Maximum of 10 participants per ship. Where: Festningskaien Description: Compete against the other trainees in a game of chess. Show up at the location and receive your game schedule. Official chess rules apply.
Name of ship:

Names of participants:
1.
2.
3.
4.
5.
6.
7.
8.
9.
10.

CHESSTOURNAMENT



12. CRUISE-IN-COMPANY PORTS

NAME OF PORT:

STORD (NATTRUTEKAIEN)

Description of Port and Benefits

Stord is the only town in Sunnhordland and it is a centre for the entire region. Leirvik is a junction for communication within and out of Sunnhordland. In Stord, the distance to travel to new experiences in all of Sunnhordland is relatively short. Here you can go skiing in perpetual snow, swim in the sea, fish for trout in the rivers and for pollock in the sea, all in one day. Sunnhordland Museum has a farm cluster situated a few minutes' walk up hill from the centre of Leirvik. You can experience both beautiful scenery and its exciting history. Stord Maritime Museum, situated on Leirvik harbour, highlights the industrial and maritime history of Sunnhordland over the last 100 years.

Location

N 59 46,848 E 005 30,160

Contact details

Harbour Office Stord Port
Tel: + 47 53 49 67 66
E-Mail: sh@stord.kommune.no

Ship Facilities

- Tugs: N/A
- Pilots: N/A

Berthing

- Maximum LOA 190 m.
- Maximum draft (water & air): Water draft 7,5 m.
No air draft
- Number of berths available (by size): 5 ports available

Crew Facilities

- Social Programme: Barbecue
- Toilet and Shower facilities provided
- Pool

NAME OF PORT:

ROSENDAL

Description of Port and Benefits

Rosendal is a village in the municipality of Kvinnherad. It is situated on the Hardanger fjord next to Folgefonna National Park and has a beautiful coastline, stretching from dramatic scenery with waterfalls and steep mountains in the north to mild coastline and islands in the south.

The village along the fjord here has strong traditions of wooden boat building. Until the 1950s this was an important industry. Today you can visit the ship building museum Skaalurensamlinga in Rosendal and visit enthusiasts who restore the Ketch (Galeas) Gurine, just a short walk from Rosendal harbour.

Location

N 59°98'59 E 06°00'04
Rosendal Hamn

Contact details

Folgefonna National Park Centre (at the port)
Harbour Office +47 915 31 515
Port tlf. 46932012, Port master/ PFSO 915 31 515

Ship Facilities

- Tugs: No
- Pilots: No
- Berthing: Yes - Pontoon jetty 200m
- Maximum LOA: 80m by the pontoons, weather reservation
- Maximum draft (water & air): N/A
- Number of berths available (by size): 2 x 100m and 1 x 60m

Crew Facilities

- Crew restaurant
- Internet
- Toilet & shower facilities provided





NAME OF PORT:

STRUSSHAMN

Description of Port and Benefits

Strusshamn is the Cruise in Company harbour located closest to Bergen (5nm). In the old days Strusshamn was a quarantine harbour and the port where the ships waited for the right sailing breeze to and from Bergen.

Strusshamn is a small, sheltered and intimate port. In our port, the crews will be close together, and they will be able to give color to the event. The youth council invites all the crews to a free concert, with local heroes and coming stars, on Friday 19 July. We hope we can give the crews a good time in Strusshamn before entering a busy Bergen.

Location

Chart 23. Pos.: N 60.40 - E 5.19

Contact details

Email: trond.berntsen@askoy.kommune.no
 Phone: +47 56 15 81 70 / +47 916 92 881
 Harbour master: +47 979 05 957

Ship facilities

- Electricity
- Water

Tugs: Shore Crew, + 4 powerful dingies.

Pilots: Contact our Harbour Master in advance to book your place in Strusshamn.

Berthing

- Sheltered harbour
- Maximum LOA : 48 m
- Maximum Draft: 3,1 - air –non
- Number of berths available alongside (by size): 48m - 1 berth, 20 - 35m - 4 berths, smaller boats - 10 berths (possible to double/triple berth).

Crew Facilities

- Social Program: possibilities for the crews to join grill party, free concert Friday 19, football match, gym at the nearby school, rowing traditional «Osellers», kanoes, kayaking, bathing place, trips to the lookout point, «small ships» regatta for the crews on Saturday with «yngling», PA-system for the crews to use for crew parties or small concerts, showers, free wifi.
- Showers
- Laundry facilities
- Free Wi-Fi
- Bathing place.
- Shops close to the harbour

NAME OF PORT:

SIREVÅG

Description of Port and Benefits

Every summer the idyllic harbour in Sirevåg is a popular destination for sailors and boaters. Sirevåg has a very large mole/breakwater protecting its harbour (Europe's second largest humeral mole) which makes it a safe and good place to dock. It's closest neighbour to the north is Jærstrendene, with beautiful open-air beaches and wide horizons. During World War II, the German occupiers built a fortress on the Vedafjellet, just south of Sirevåg, as part of "Festung Norwegen". Viewpoints and caves in the mountains are still intact and are visited by a large number of tourists each year.

Location

- Position: 58gr 30,4368N 05gr 47,085E.
- Distance from Fredrikstad to Sirevåg: Ca 200NM

Contact details

Coordinator: Anne Marie Gjølme
 E-mail: amg@ha.kommune.no
 Tel: +47 900 75 746
 Harbour Director: Jarle Bø E-mail: jabo@ha.kommune.no
 Tel: + 47 488 44 788

Ship facilities

Tugs: Available if necessary
Pilots: Ships must book pilots in advance through SafeSeaNet Norway

Berthing:

- Total quay length 533m.
- Depths (harbour entrance and harbour): 9m.
- Small tidal differences in Sirevåg. +/- 10cm

Crew Facilities

- Toilets & showers
- Free WiFi
- Nice sandy beach/ bathing place
- Shop close to the harbour
- Local market 18 July open from 12:00 - 19:00

Social Programme for the trainees and the crew: 18 July :

- Hike in nature
- Crew party in cosy location in the neighbouring village in the afternoon and evening
- Tall Ships Races - CinC festival: 18 July in our beautiful harbour
- Local market
- Free activities



© Agderposten

NAME OF PORT:

BEKKJARVIK

Description of Port and Benefits

Bekkjarvik has been an important centre for trade in Sunnhordland. Bekkjarvik gave good shelter for sailors and fishermen on their way in to Bergen. In the end of the 1600s, Bekkjarvik Gjestegiveri was built to house sea travellers, on orders from the Danish King Cristian Quart. Fisheries have continually been important in Bekkjarvik and at some point there was a barrel factory in the port. You can still see the old hangers for closing nets, and in the main building there is an exhibition showcasing the history and fisheries of Bekkjarvik. Today, fisheries are still a big part of Bekkjarvik; fishing vessels are often seen laying in the port.

Location

On the island Selbjørn south of Bergen/Sotra and north of island Stord. Chart 20/21

Contact details

Christian Halstensen tlf. 977 8880
Gunn Mette Kvist tlf. 91687727

Ship facilities

- Tugs: No
- Pilots: No
- 2 quays, concrete. 57 m and 70 m.

Berthing

- Maximum LOA: 110m
- Maximum draft (water & air): 10m.
- Number of berths available (by size): 2, 57 m and 70 m.

Crew Facilities

- Shopping
- Free WiFi
- Restaurants
- Gym
- Beach
- Hiking opportunities
- Car rental
- Toilet & shower facilities provided

Social programme:

- Ship festival/party in the harbour

Trainee activities:

- Sport tournaments
- Hiking with guide
- BBQ at the beach

NAME OF PORT:

ARENDAL

Description of Port and Benefits

Along the beautiful southern coast of Norway, you find the small town Arendal. Though there are only about 39 000 inhabitants in this municipality, you'll find we can offer a big city atmosphere during the summer months. Then, this town really comes to life with numerous activities from May through August.

Location

- N58° 27' 30" E8° 46'
- Chart 7

Contact details

Arendal Havnevesen
Langbrygga 26
tlf 37 01 31 47
E-post:post@arendalhavn.no
VHF channel 12 & 16

Rune Hvass, Harbour Master
Telefon: +47 975 27 000
Mobil: +47 900 68 450
E-post: rune.hvass@arendalhavn.no

Ship facilities

- Tugs
- Pilots: If required, but not readily available

Berthing

- Name of quay: Batterikaaien, Hotellkaia, Langbrygga, Stenkaaien, Kalleviks brygge
- Maximum LOA: 230m
- Maximum draft (water & air): 10 m depth: No air restrictions south approaches. 34 m Tromøy Bridge Eastern approaches

Number of berths available (by size)

- Batterikaia 110m
- Hotellkaia 80 m
- Langbrygga 80 m
- Stenbrygga 40 m
- Kallevigsbrygge 40 m

Crew Facilities

- Arendal Marina and swimming pool available for crew under 25yrs- upon identification as Tall Ship Races crew or trainee.
- Toilet and Shower facilities provided.

**NAME OF PORT:****DYPEDAL****Description of Port and Benefits**

Dypedal is a small jetty located in the narrow and beautiful Skjelsbo Sound. Entering from south having ended the Parade of Sail you will pass nice places with traditional Hvaler architecture in a green and rocky environment. Dypedal hosts the Brottet theatre, a former granite quarry now a Greek amphitheatre, an interesting coast museum and a typical church. Dypedal is a good haven to relax after busy event days in Fredrikstad and to prepare for an early morning start of cruising towards Bergen. The jetty can take 6 to 8 smaller vessels, a few more if at anchor.

Location

Chart 1

N59° 5' E10° 55'

Contact details

Paul Henriksen

Mobile + 47 414 63 771

E-mail: Paulh@online.no

Ship facilitiesBerthing

- Berthing jetty, electricity.
- Maximum 30m, fore and aft mooring or double/triple if necessary
- Maximum draft (water & air)
- 4 m draught, no air restrictions entering from S, avoid bridge
17 m air N

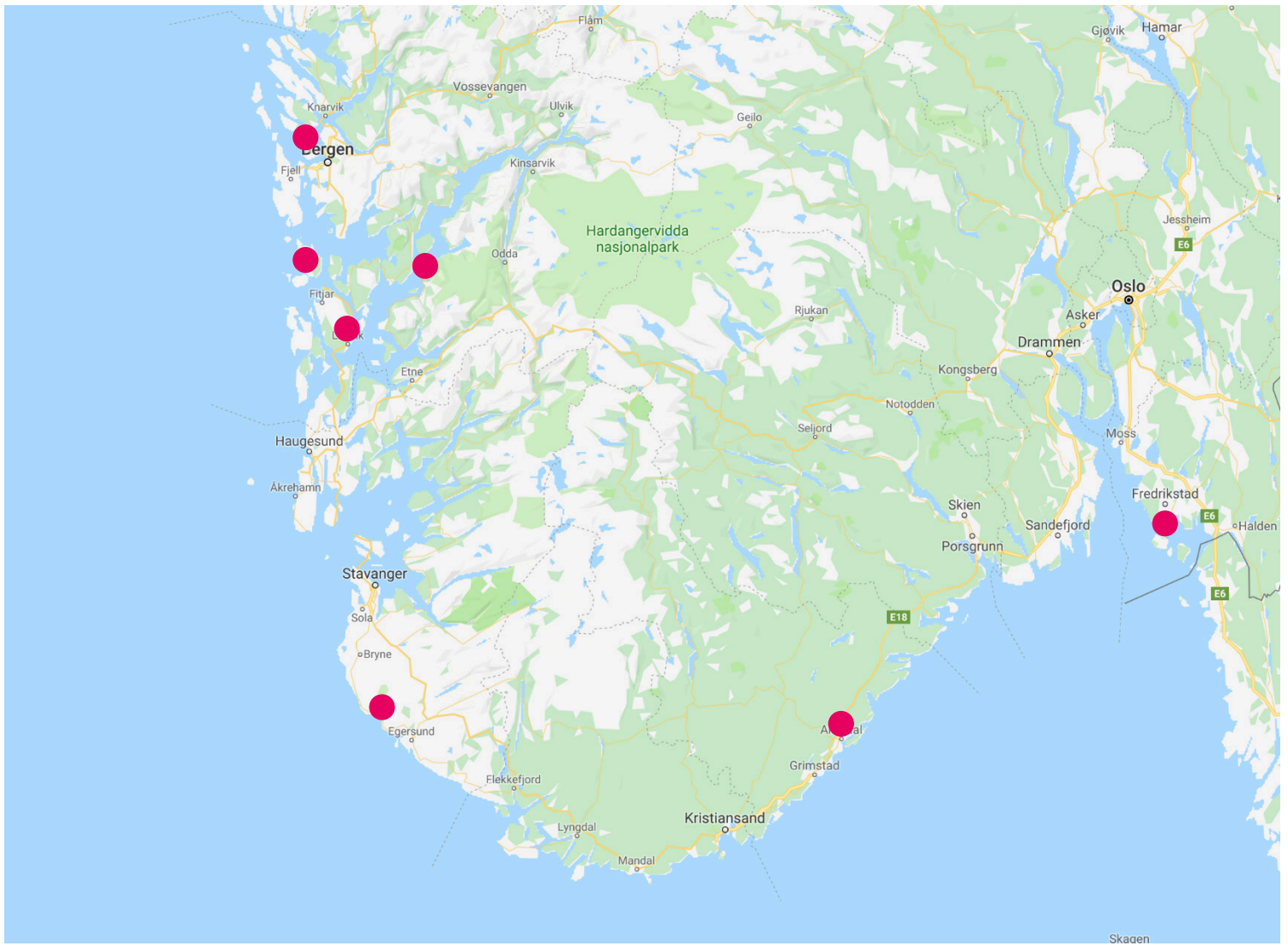
Number of berths available (by size)

- 6-10 vessels, depending on length, first come, first serve

Crew Facilities

- Toilet and Shower facilities provided.

LOCATION OF CRUISE IN COMPANY PORTS





THE TALL SHIPS RACES

*Bergen
Norway*

TALLSHIPSBERGEN.NO