

# Session 4C



## Personal Career Development within the World of Tall Ships and Sail Training



## **Session 4C**

# **Personal Career Development within the World of Tall Ships and Sail Training**

**Chair: Erin Short**

**Speakers: Bernt Folmer**





# PERSONAL CAREER IN PROFESSIONAL SAILING

**Capt. BERNT FOLMER**

THE NETHERLANDS

# INTRODUCTION:

History

accidents

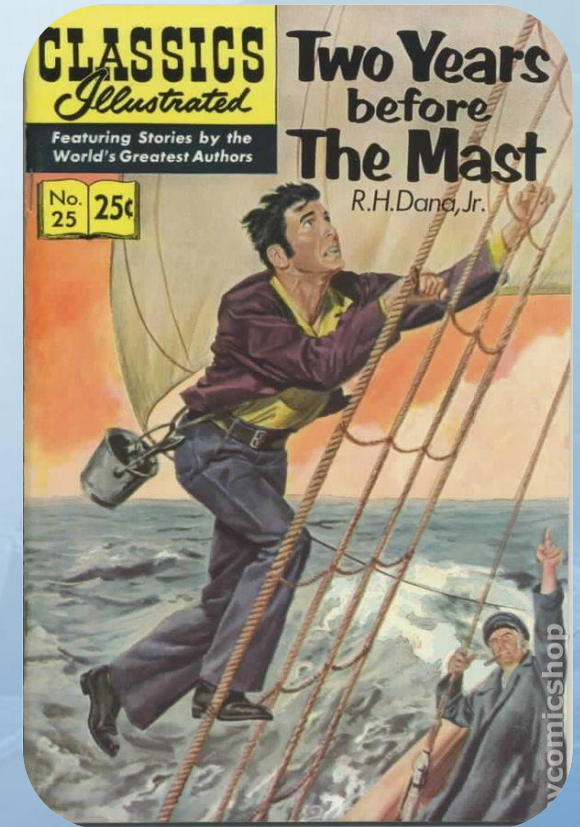
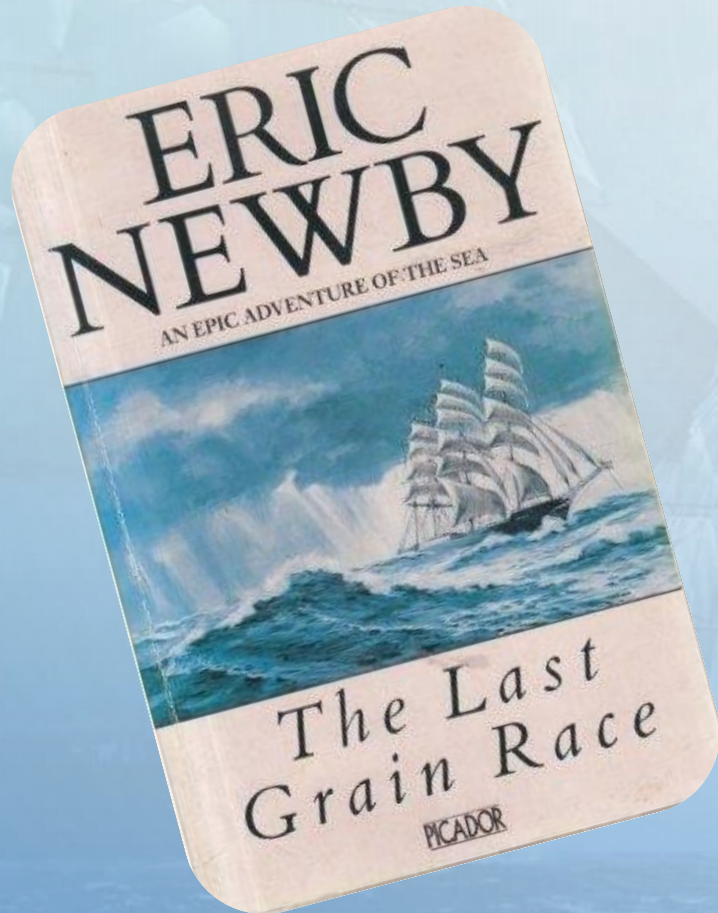
Safety

Present education possibilities / rules

STCW

# HISTORY

Education? why?



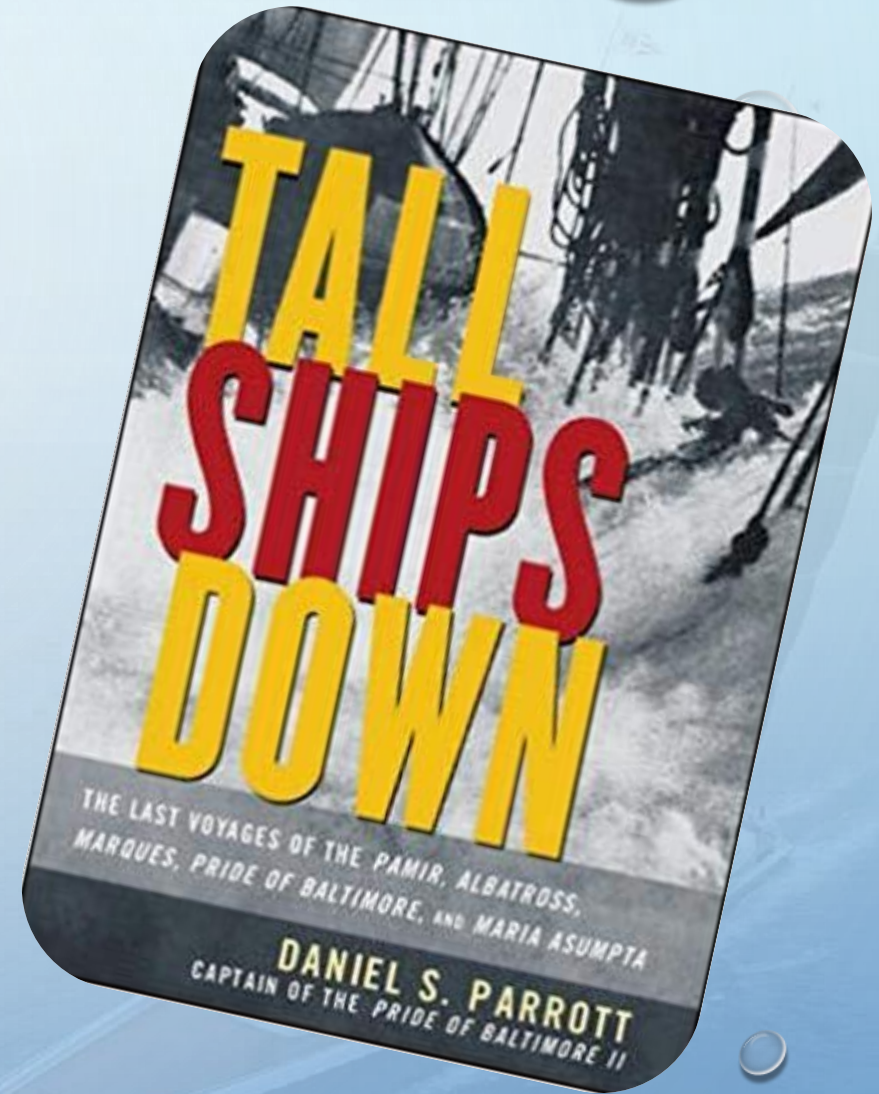
# ACCIDENTS

**Knowledge**

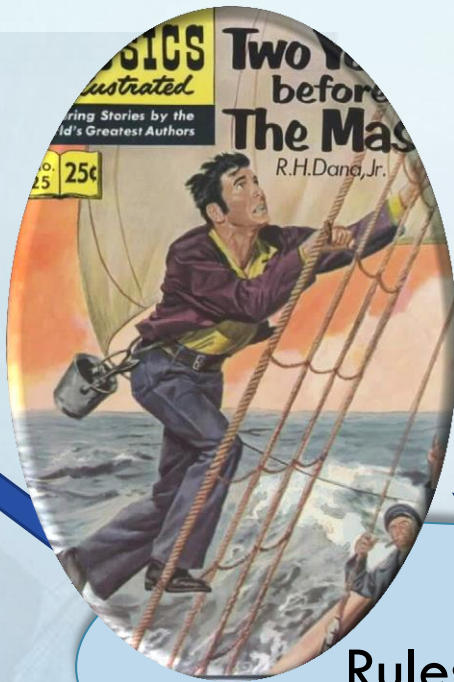
**Stability**

**Sail handling**

**Ship constructions**



Accidents



MLC

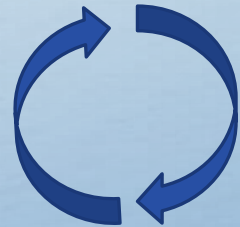
SPS

ISM

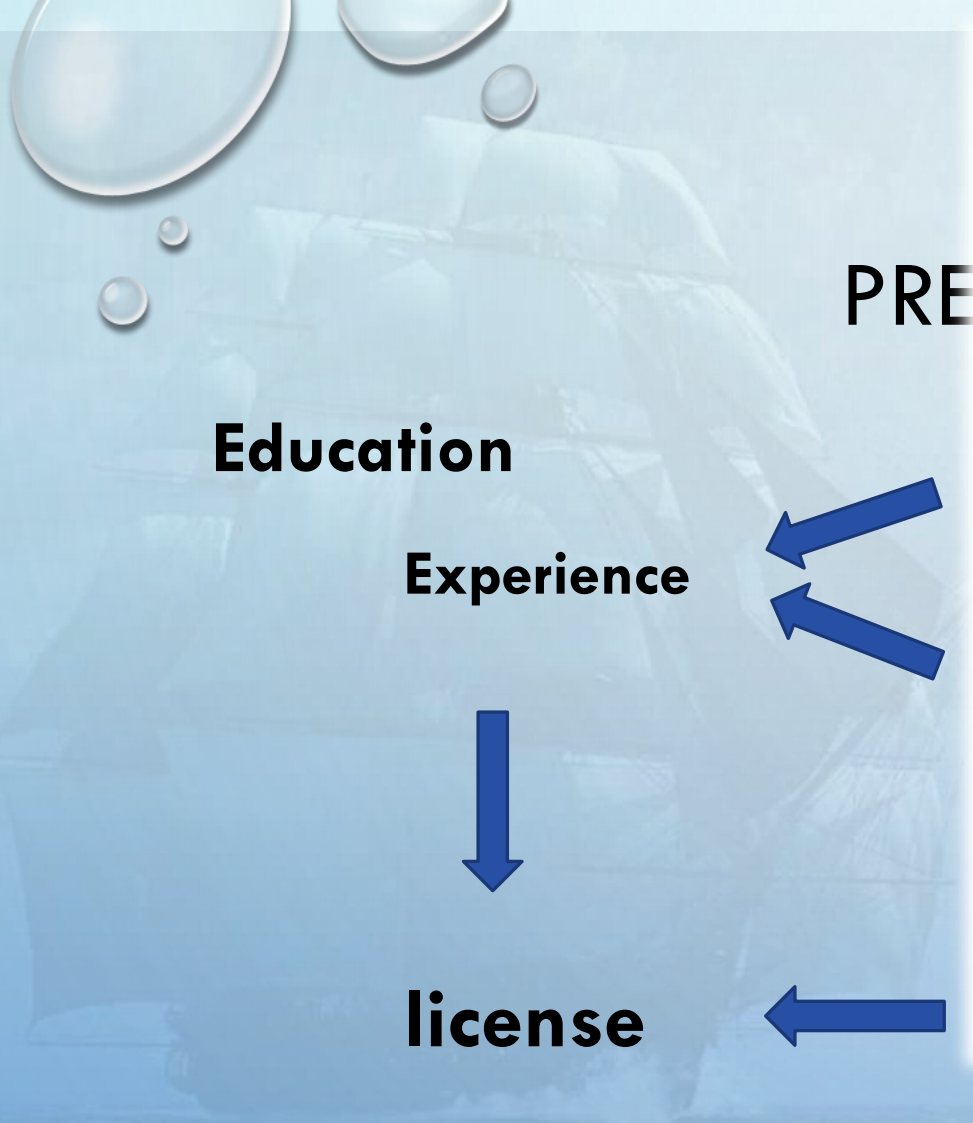
Rules



Education



Safety



PRE

Education

Experience

license

|            |   | Progressing |      |        | Proficient |      |        |
|------------|---|-------------|------|--------|------------|------|--------|
|            |   | Signature   | Date | Vessel | Signature  | Date | Vessel |
| 2.5        | Apply wire locks/mousing to shackles and rigging screws   |             |      |        |            |      |        |
| 2.6        | Overhaul/renew anti-chafe arrangements  |             |      |        |            |      |        |
| 2.7        | Make up and fit rope or rigid ratlines/cranelines.  |             |      |        |            |      |        |
| 2.8        | Overhaul/repair/renew footropes/flemish horses.   |             |      |        |            |      |        |
| 2.9        | Fit patent rigging terminals. eg 'Norseman'   |             |      |        |            |      |        |
| <b>3.0</b> | <b>Running Rigging</b>  |             |      |        |            |      |        |
| 3.1        | Reeve off buntlines, clewlines, down-hauls, brails, reefing gear etc.   |             |      |        |            |      |        |
| 3.2        | Apply dressing/lubricants to wire ropes.  |             |      |        |            |      |        |
| 3.3        | Open, inspect and treat purchase and lead blocks.   |             |      |        |            |      |        |
| 3.4        | Inspect and maintain bullseyes, pinrails, belaying pins and cleats.   |             |      |        |            |      |        |
| 3.5        | Inspect and write a condition report on running and standing rigging (including bowsprit). Checklist format acceptable. |             |      |        |            |      |        |
| 3.6        | Make an inventory of spare rigging, cordage and fittings  |             |      |        |            |      |        |
| <b>4.0</b> | <b>Masts and Spars</b>  |             |      |        |            |      |        |
| 4.1        | Locate ship's spar plan   |             |      |        |            |      |        |

courses

security  
 Crowd management  
 ....





# EDUCATION

**ISES**

## **International Sail Endorsement Scheme**

Additional to existing Maritime education.

online preparation  
Sea time  
Written and Oral Exams



**EZS**

## **Enkhuizen Nautical College**

Start from scratch

1 yr education  
6 mnth seatime  
Limited OOW

or

2nd yr education  
6 mnth seatime  
unlimited OOW

Endorsement

2 mnth education  
3 mnth add. Seatime  
Unlimited OOW



# EDUCATION



**ISES**

**EZS**

**International Sail Endorsement  
Scheme**

**Enkhuizen Nautical College**

No official Status

Flag state **and** MCA recognition  
(NL) (UK)

[www.sailtraininginternational.org/  
/international-sail-endorsement-  
scheme](http://www.sailtraininginternational.org/international-sail-endorsement-scheme)

[www.ezs.nl](http://www.ezs.nl)

# STCW ?

Standard of Training, Certification and Watchkeeping for Seafarers



No content for Sailing Vessels!

# CAREER PATHS



**Young sailor**

→ **Go Sail!**

**6 months at sea  
+  
Basic safety**

→ **CoC  
Rating deck**

# CAREER PATHS

**Still want to?**

**Go Learn!**



**Merchant education + endorsement  
ISES or EZS**

**Full sailing education  
EZS**



## DISCUSSION TOPICS:

- SAILING REQUIREMENTS IN STCW?
- DO WE HAVE ENOUGH PROFESSIONAL CREW?
- HOW DO WE INTEREST NEW CREW FOR A SAILING CAREER?

Boston, Sept. 20, 1840

## d. Case of the Mutineers



Every decent minded citizen owes it to himself to read Dana's current book, "Two Years Before the Mast," before judging too harshly the action of the mutineers from the Stewart Shipping Company's "Pilgrim."

That American ship-owners permit the appalling working conditions to

to  
ecc  
of  
tion  
and  
Un  
rec  
sho  
by  
han





