

SCF FAR EAST TALL SHIPS REGATTA 2018

Captains' Manual

Contents

1. Contact Addresses and Telephone numbers
 - 1.1 Port and Sail Training International Contacts
 - 1.2 Consulates

2. Arrival Arrangements
 - 2.1 Charts
 - 2.2 Frequencies
 - 2.3 Call Signs
 - 2.4 Procedures
 - 2.5 Pilots
 - 2.6 Tugs
 - 2.7 Customs & Immigration
 - 2.8 Security

3. Berthing
 - 3.1 Special berthing Instructions
 - 3.2 Formalities
 - 3.3 Berthing plan

4. Town Plan
 - 4.1 In Port Facilities
 - 4.2 Town Information
 - 4.3 Town Plan

5. Captains' Programme
 - 5.1 Captains' Dinner
 - 5.2 Afterguard (Ships' Officers') Party
 - 5.3 Captains' Briefing

6. Crew Programme
 - 6.1 Crews' Party
 - 6.2 Crew Parade
 - 6.3 Prize giving
 - 6.4 Crew Activities.



7 City Cultural Programme

8 Liaison System

- 8.1 Explanation
- 8.2 Chief Liaison Officer
- 8.3 Location

9 Ship Services

- 9.1 Fuel
- 9.2 Water
- 9.3 Electricity
- 9.4 Waste
- 9.5 Gas
- 9.6 Repairs
- 9.7 Stores
- 9.8 Ship Agents

10 Crew Services

- 10.1 Crew Centre
- 10.2 Telephones
- 10.3 First Aid Posts
- 10.4 Laundry
- 10.5 Toilets & Showers

11 Forms

12 Cruise in Company

- 12.1 Cruise in Company Office
- 12.2 Charts required
- 12.3 Port Details



YEOSU

13 Emergency Contact Details

1 CONTACT ADDRESSES AND TELEPHONE NUMBERS	
1.1 PORT AND SAIL TRAINING INTERNATIONAL CONTACTS	
Port Committee (Map Ref) tbc Address 1 Address 2 Address 3 Contact Name	Telephone Number tbc
Liaison Office (Map Ref) tbc Address 1 Address 2 Address 3 Contact Name	Telephone Number tbc
Harbour Office 34° 43' 27' N 127° 42' 21' E Port Authority Yeosu Regional Maritime Affairs and Fisheries Office 335-1 Sujeong-dong Yeosu city 550-705 Korea, South Contact Name	Telephone Number +82 061-650-6000 Fax Number +82 061-654-2358 Email http://yeosu.momaf.go.kr/
Sail Training International Race Office (Map Ref) Yesou Venezia Hotel & Resort 61-13, Odongdo-ro, Sujeong-dong, Yeosu, South Jeolla Laura Blyth-Brown	Telephone Number +82 61-664-0001
Sail Training International Race Committee Office Yesou Venezia Hotel & Resort 61-13, Odongdo-ro, Yeosu-si, Jeollanam-do, Republic of Korea Mike Bowles MBE	Telephone Number +82 61-664-0001
Press & Media Centre (Map Ref) tbc Address 1 Address 2 Address 3 Contact Name	Telephone Number tbc
Map references refer to the Town Plan which can be found in section 4	

Yeosu & Vladivostok



YEOSU

2 ARRIVAL ARRANGEMENTS

2.1 Charts	tbc
Republic of Korea HO No. 209, 241 and 242. British Admiralty (BA) 3390 and 3391. Publications: BA South and East Coasts of Korea, East Coast of Siberia and Sea of Okhotsk Pilot, NP 43.	
2.2 Frequencies	tbc
Yeosu Port Control listens on Channel 16 and work on Channels 12, 20 and 22. Yeosu Pilots call sign "Yeosu Pilots" listens on Channel 16 and work on Channels 8 and 13. VTS/RADAR: Yeosu VTS call sign "Yeosu VTS" listens on Channel 16 and work on Channels 10, 12 (Sector No. 1) and 67 (Sector No. 2). Yeosu VTS: T: +82 (61) 666 6811/12, 650 6070, 650 6073. F: +82 (61) 666 6813.	
2.3 Call Signs	
The call sign is "Yeosu-Port Control"	
2.4 Procedures	tbc
The time zone: UTC +9 hours. Water is calm and requires no breakwater. Water Depth Channel: 31 - 35 feet 9.4 - 10 meters Cargo Pier: 11 - 15 feet 3.4 - 4.6 meters Mean Tide: 2 feet Anchorage: 46 - 50 feet 14 - 15.2 meters 1. Masters of vessels are requested to report Yeosu VTS on VHF CH 12/16 a) 1hr. ETA notice of SR/ER Line Advise ship's name/call sign/last port/etc. b) When abeam at SR/ER Line c) Time of anchoring at designated anchorage. 2. Masters of vessels are requested to stand by VHF CH 12/08 in this port 3. Masters of vessels are requested to confirm ETA 5/2 hrs before arrival at pilot station via local agent. Geobukseon Bridge: Cable stayed bridge total length 464m, middle span 230m, width 24.2m and clearance height below 22.00m. Dolsandaegyo Bridge: Cable stayed bridge total length 450m, middle span 260m, width 11.7m.	

Yeosu & Vladivostok



YEOSU

<p>Approaches: Numerous fishing boats may be encountered in the vicinity of Dae-Do Island, Sea Buoy, Buoy No. 13, Pyungsan Light and the designated area. Fishing vessels are normally cleared out of the way by tug navigating ahead of vessels proceeding from the anchorage to the berth. Vessels shall not exceed 12 knots on entering designated area.</p>	
2.5 Pilots	tbc
<p>Pilotage is compulsory for entrance and departure of a ship over 50m LOA. Any ship in need of pilotage service should make a report at least 5 hours in advance of the service start time to Yeosu district pilot association (+82 662-3383) via phone or wireless communication (VHF CH 8/13). Available 24 hours. Vessel to forward ETA with max. draft to the Pilot's office in advance and when within VHF range. Pilot boards at pilot station No. 3 in position Lat. 34° 44' 30" N, Long. 127° 49' 30" E. Pilot disembarks vessel in position Lat. 34° 44' 30" N, Long. 127° 49' 30" E.</p>	
2.6 Tugs	tbc
<p>The port of Yeosu operates with the user designation system. Please contact the towage company directly and make your request for the use of tug boat. http://yeosu.mof.go.kr/eng/yeosu/cnt/selectContentsPage.do?cntId=tugboat</p>	
2.7 Customs & Immigration (Forms available in Section 10)	tbc
2.8 Security	tbc
<p>Identification Cards: Crew required to carry valid identification cards at all times.</p> <p>Authority: Yeosu Gwangyang Port Authority, 545 - 030 World Maritime Center, 465 Hangmandaero, Gwangyang-si, Jeollanam-do, Republic of Korea. Tel: +82 (61) 797 4300. Fax: +82 (61) 797 4502. http://www.ygpa.or.kr Contact: Sang Jo Lee, Chief Executive Officer. Manager, Port Operations Team.</p> <p>ISPS COMPLIANCE: Port is compliant.</p>	



YEOSU

3 BERTHING

3.1 Special Berthing Instructions tbc

Overview: Part of Yeosu Gwangyang Port. Yeosu Port comprises Yeosu New Port and Yeosu Old Port. Handles passenger vessels (coastal and cruise), fishing and pleasure craft. Yeosu New Port also contains Expo 2012 Korea.

Location: On the south coast, at the entrance and within Gwangyang Bay.

The SCF Far East Tall Ships Regatta berthing is in the Yeosu Expo port area. All vessels will all be in one area.

- Class As on quay walls.
- Class Bs and yachts to be on a pontoon.

3.2 Formalities

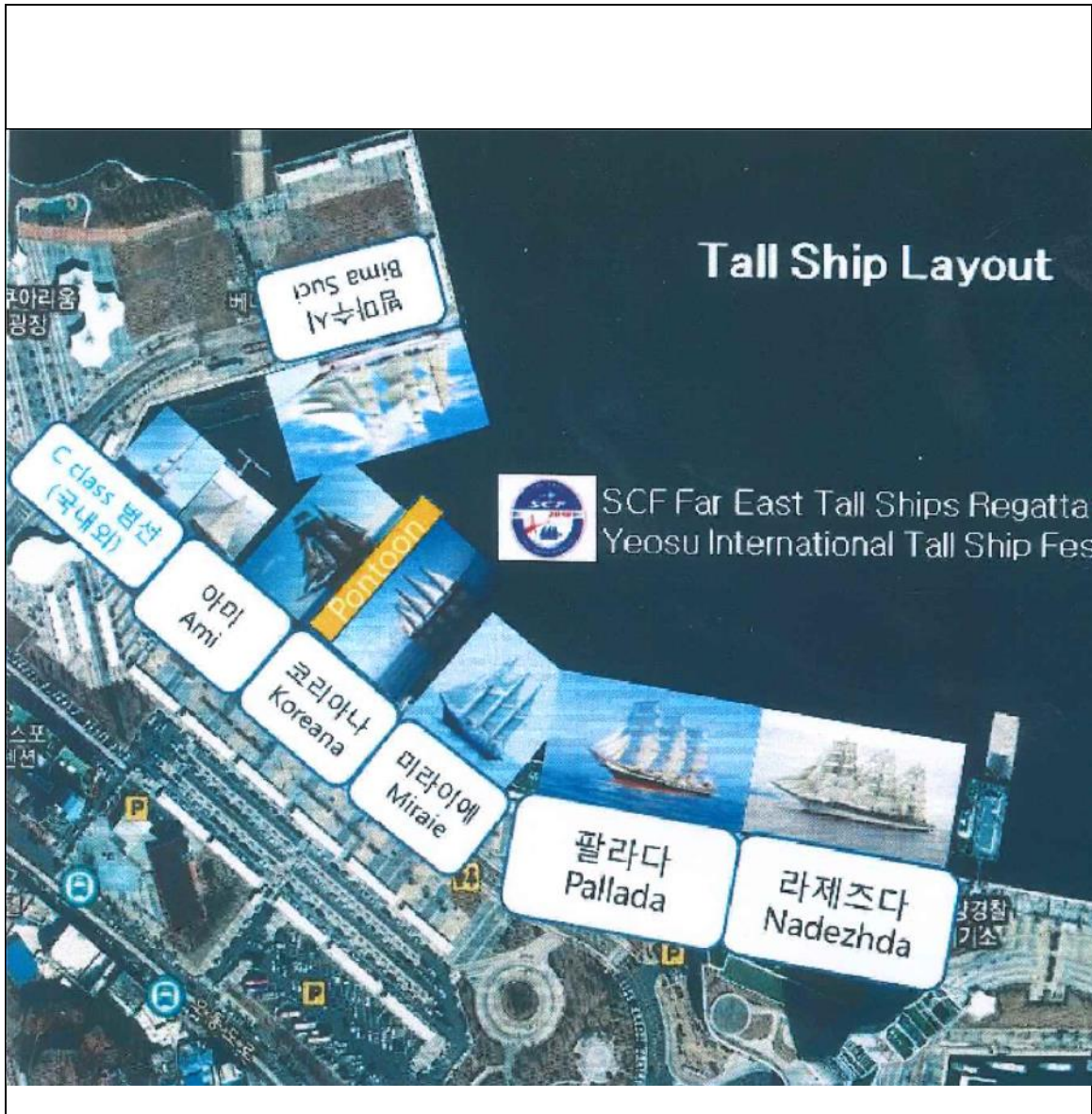
- Dress Ship

Ships are requested to dress overall with flags/bunting during the time in port.

3.3 A Berthing Plan and an overview of the Port are included overleaf.

Yeosu & Vladivostok





Yeosu & Vladivostok



4 TOWN PLAN	
<p>4.1 List of in port Facilities:</p> <p style="text-align: center;">tbc</p> <p>Post Office Banks Crew Centre Venues for Events Bus Stops for Crew transport Crew Parade Route Churches and other places of worship</p>	<p>Map Reference</p> <p style="text-align: right;">tbc</p>
<p>4.2 Town Information</p> <p>Business / Shop opening hours Museums Swimming pool Etc.</p>	<p style="text-align: right;">tbc</p>
<p>4.3 A Town Plan is attached overleaf</p>	<p style="text-align: right;">tbc</p>



YEOSU

5 CAPTAINS' PROGRAMME	
5.1 Captains' Reception	tbc
<ul style="list-style-type: none">• Date, Time• Location (see map)• Transport arrangements• Invitation (+ ? guests)	
5.2 Afterguard (Ships' Officers') Party	tbc
<ul style="list-style-type: none">• Date, Time• Location (see map)• Transport arrangements• Invitation (+ ? guests)	
5.3 Captains' Briefing	tbc
<ul style="list-style-type: none">• Monday 27 August 1430 – 1600 & Thursday 30 August, 1900 – 2100• Location• Transport arrangements	

Yeosu & Vladivostok



6 CREW PROGRAMME	
<p>6.1 Crew Welcome Party</p> <ul style="list-style-type: none"> • Monday 27 August, 1900 – 2100 • Location • Transport arrangements • Entry System (wristbands) 	<p>tbc</p>
<p>6.2 Crew Parade</p> <ul style="list-style-type: none"> • Tuesday 28 August, 1800 – 2000 • Yeosu Expo and ship berthing area • Route • Transport arrangements 	<p>tbc</p>
<p>6.3 Prize Giving</p> <ul style="list-style-type: none"> • Date, Time • Location (see map) • Procedure & Format 	<p>tbc</p>
<p>6.4 Crew Activities</p> <p>A list of activities which the crew are encouraged to take part in is listed overleaf listing brief details, of description, location, day, date, time, transport arrangements. Please note that for some activities crews need to register using the forms provided at the end of this section.</p>	<p>tbc</p>



7 CITY CULTURAL PROGRAMME

Details of other cultural activities taking place in the City whilst the fleet is in port.

tbc

Yeosu & Vladivostok



8 LIAISON SYSTEM	
8.1 Liaison System (Explanation of system)	tbc
8.2 Name & contact details of Chief Liaison Officer	tbc
8.3 Location of Liaison Office (see map)	tbc



YEOSU

9 SHIP SERVICES	
9.1 Fuel	tbc
Available by barge at anchorage. Advise Agent in advance. Average rate 100–200 t.p.h.	
9.2 Water	tbc
Fresh water available – details tbc	
9.3 Electricity	tbc
9.4 Waste	tbc
Collection and disposal of garbage by authorised companies only. All organic waste material (animal and galley) must be suitably packaged and collected by authorised companies. No plant or animal material is to be landed without prior permission from the Quarantine office.	
9.5 Gas	tbc
9.6 Repairs	tbc
Chandlery can deliver while vessel is alongside – details tbc	
9.7 Stores	tbc
9.8 Ship Agents	
BANDO SHIPPING CO., LTD. 2F, 453, JWASUYEONG-RO, YEOSU-SI, JEOLLANAM-DO, S.KOREA ZIP: 59696 TEL: 82-61-651-8902 (REP) FAX: 82-61-652-6336 MOB: 82-010-3744-1431 E-MAIL: ysbando@ysbando.co.kr	

Yeosu & Vladivostok



YEOSU

10 CREW SERVICES	
10.1 Crew Centre	tbc
<ul style="list-style-type: none">• Location (map ref)• Facilities	
10.2 Telephones	tbc
10.3 First Aid	tbc
10.4 Laundry Facilities	tbc
<ul style="list-style-type: none">• Location (map ref)• Description for use	
10.5 Toilets and Showers	tbc
<ul style="list-style-type: none">• Location (map ref)	

Yeosu & Vladivostok



YEOSU

11 FORMS

To Include: tbc

- Customs and Immigration
- Crew Activities
- Ship Services

13. Emergency Contact Details

Port Authority	Telephone: (24hrs in case of emergency) tbc
Fire	119
Medical	119 Medical: St Carollo General Hospital. T: +82 (61) 720 2000. http://www.stcarollo.or.kr Sacred Heart Hospital. T: +82 (61) 650 8000. http://www.ysss.co.kr Yeosu Chonnam Hospital. T: +82 (61) 640 7575. http://www.yscnhosp.com
Police	112 OR 911 tbc
Coastguard	Telephone: tbc
Others	National security 111 Missing persons 182

Yeosu & Vladivostok



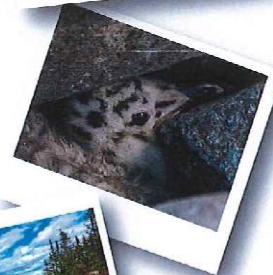
Get your camera ready and take part in the official
SCF FAR EAST TALL SHIPS REGATTA 2018
'FUTURE GREEN OCEAN' PHOTO COMPETITION



Sail Training International

TAKE A PHOTO
that represents the
environment of
the 'Green Ocean'
this could be anything
from nature,
natural scenery,
protecting the beautiful
sea or animals
at sea –
IT'S YOUR CHOICE!

Your chance
to win
A DRONE!



HOW TO ENTER

Pick your perfect photo/s and choose one of the following ways:

- 1) Give your photo/s to your liaison officer in Yeosu or Vladivostok **OR**
- 2) Email your photo/s to Photos@sailonboard.com **OR**
- 3) Share yours photo/s on Twitter/Facebook/or Instagram **use #FutureGreenOcean**

GOOD LUCK...

WINNERS WILL BE ANNOUNCED AT VLADIVOSTOK ON 12/09/18



Sail Training International

SCF Far East Tall Ships Regatta 2018 'Future Green Ocean' photo competition

Dear Captain,

Help us celebrate the great efforts made by the South Korean and Russian governments to protect the environment and share this information with your crew.

ALL vessels are INVITED to encourage their crew members to take part in our official 'Future Green Ocean' photo Competition.

Please inform your CREW members to submit their entry (they must include their name and vessel name with photo) in the following ways

- 1) Submit photo/s to the Liaison Officer OR
- 2) Email photo to photos@sailonboard.com OR
- 3) Share photo to Twitter/Facebook/or Instagram PLEASE use #FutureGreenOcean

All photos must be submitted **before 10 September 2018**.

Winners will be presented with an award during the 'Solemn Ceremony' on 12 September 2018.

Please display the attached 'Future Green Ocean' competition posters on your vessels.

Fair Winds

Mike Bowles

*Mike Bowles
Race Director
SCF FAR EAST TALL SHIPS REGATTA 2018*



VLADIVOSTOK
SCF FAR EAST TALL SHIPS REGATTA 2018
Captains' Manual

Contents

2. Contact Addresses and Telephone numbers

- 1.1 Port and Sail Training International Contacts
- 1.2 Consulates

2. Arrival Arrangements

- 2.1 Charts
- 2.2 Frequencies
- 2.3 Call Signs
- 2.4 Procedures
- 2.5 Pilots
- 2.6 Tugs
- 2.7 Customs & Immigration
- 2.8 Security

3 Berthing

- 3.1 Special berthing Instructions
- 3.2 Formalities
- 3.3 Berthing plan

4 Town Plan

- 4.1 In Port Facilities
- 4.2 Town Information
- 4.3 Town Plan

5 Captains' Programme

- 5.1 Captains' Dinner
- 5.2 Afterguard (Ships' Officers') Party
- 5.3 Captains' Briefing

6 Crew Programme

- 6.1 Crews' Party
- 6.2 Crew Parade
- 6.3 Prize giving
- 6.4 Crew Activities.

Yeosu & Vladivostok



VLADIVOSTOK

7 City Cultural Programme

8 Liaison System

- 8.1 Explanation
- 8.2 Chief Liaison Officer
- 8.3 Location

9 Ship Services

- 9.1 Fuel
- 9.2 Water
- 9.3 Electricity
- 9.4 Waste
- 9.5 Gas
- 9.6 Repairs
- 9.7 Stores
- 9.8 Ship Agents

10 Crew Services

- 10.1 Crew Centre
- 10.2 Telephones
- 10.3 First Aid Posts
- 10.4 Laundry
- 10.5 Toilets & Showers

11 Forms

12 Cruise in Company

- 12.1 Cruise in Company Office
- 12.2 Charts required
- 12.3 Port Details

Yeosu & Vladivostok



VLADIVOSTOK

2 ARRIVAL ARRANGEMENTS

2.1 Charts

British Admiralty (BA) 2432, 3044, 3045, 3046

Publications: BA South and East Coasts of Korea, East Coast of Siberia and Sea of Okhotsk Pilot, NP 43.

2.2 Frequencies

VHF CH 67/69 (Vladivostok Harbour Master)

All vessels within port areas and anchorages must maintain a continuous listening watch on VHF Channel 16.

VTS/RADAR: Vladivostok VTS is an integrated part of Zaliv Petra Velikogo (Peter the Great Bay) VTS and comprises Sector 3 (port of Vladivostok with approaches) and Sector 4 (port of Slavyanka with approaches).

Contact frequencies:

Station	Channels
Vladivostok Traffic	16, 67
Port Control	12, 67
Chief Controller's Office	14, 16
Elena Shipping	11, 16

2.3 Call Signs

The call sign is "Vladivostok-Port Control"

2.4 Procedures

The time zone: UTC +10 hours.

Commercial Port of Vladivostok is located on north-west of the ice-free Golden Horn Bay.

Coordinates: 43°07' N 131°53' E.

Harbour approach depth is more than 30 m.

Pre-Arrival Information:

Vessel traffic is governed by the Radar Centre of the Vladivostok Traffic Control System (VTCS). The centre maintains round-the-clock operation and can be contacted on VHF Channel 67 by calling "Vladivostok Traffic".

Vessels should forward their ETA 72 hours, 24 hours and 4 hours before arrival to the Agent.

Yeosu & Vladivostok



VLADIVOSTOK

Water Depth

Channel: 61 - 65 feet 18.6 - 19.8 meters
Cargo Pier: 36 - 40 feet 11 - 12.2 meters
Mean Tide: 1 foot
Anchorage: 36 - 40 feet 11 - 12.2 meters

Procedure: Participation is mandatory for the following:

- a. vessels over LOA 20 m.
- b. all foreign vessels
- c. all vessels carrying dangerous cargo
- d. all oil tankers
- e. vessels carrying more than 12 passengers.

Reporting: Pre-arrival report should be forwarded through Agent. All VTS reports are to be made to "Vladivostok Traffic". Vessels underway should maintain a continuous listening watch on VHF Channel 67. Vessels at anchor should monitor VHF Channel 16. Permission to cease VHF watch, or to change channels, is to be obtained from "Vladivostok Traffic".

Entry Report: When entering the VTS area, stating IMO standard items A, C or D, E and F. Reporting points are located as follows:

Reporting Point	Lat. (N)	Long. (E)
1	42° 46.2' 131° 34.0'	
2	42° 55.8' 132° 06.8'	
3	42° 50.0' 131° 47.4'	

See Annex 1.

Movement Report: When crossing the boundary between Sectors 3 and 4.

Departure Report: Not less than 15 minutes before departing berth or anchorage stating IMO standard items A, I (port of destination), O, P, T, W and X (port clearance No.).

Contact: Vladivostok Traffic. Tel: +7 (423) 249 8400. Fax: +7 (423) 249 8438. vts.vldv@norfes.ru

2.5 Pilots

Pilotage is compulsory for entrance and departure of a ship over 50m LOA.
Pilotage is compulsory for all foreign vessels and available 24 hours.

Procedure: Requests for pilotage should be made through Agent at least 24 hours before arrival, with confirmation 4 hours in advance. Vessels should confirm or amend ETA with Vladivostok Traffic on VHF Channel 67.

2.6 Tugs

The use of tugs is compulsory in the port when berthing, shifting or moving along the berth more than one ship's length. The required number of tugs shall be determined by the Master together with a Pilot having due regard to all conditions.



VLADIVOSTOK

2.8 Customs & Immigration (Forms available in Section 10)

tbc

Clearance inwards and outwards is in accordance with International rules and Russian laws and will be conducted from 0800–2000 hours, including weekends and holidays, at either the anchorage and/or berth.

2.9 Security

ISPS COMPLIANCE: Port is compliant.

Authority: Commercial Port of Vladivostok, Strelnikova Street 9, Vladivostok 690065, Primorsky Krai, Russia. Tel: +7 (423) 249 7356. Fax: +7 (423) 249 5276. Telex: 213855 PORT RU. vmtp@vmtp.ru
<http://www.vmtp.ru>

Contact: Zairbek K Yusupov, Chief Executive Officer. vmtp@fesco.com

Regional Office: Federal Agency Maritime & River Transport, Primorsky Region Maritime Port Administration, 3 Nizhne-Portovaya Street, Vladivostok 690003, Primorsky Territory, Russia. Tel: +7 (423) 230 2893. Fax: +7 (423) 222 0621. vladamp@vld.pma.ru <http://www.pma.ru>
Contact Alexander Vanyukov, Harbour Master, vladivostok@pma.ru

Regional Office: FSUE Rosmorport, Far Eastern Sea Basin Branch, Far Eastern Basin Branch, 3 ul. Nizhne-Portovaya, Vladivostok, 690003 Primorsky Territory, Russia. Tel: +7 (423) 222 0991. Fax: +7 (423) 222 0991. vladrosmorport@stl.ru <http://www.rosmorport.com>
Contact: Igor Glukhovl., Glukhov@dvf.rosmorport.ru

3 BERTHING

3.1 Special Berthing Instructions

- Class A/large B On Vladivostok Sea Terminal, Berth 30, Naval Base
- Smaller vessels Adjacent to Vladivostok Sea Terminal in Berth 30 area

3.2 Formalities

- Dress Ship

Ships are requested to dress overall with flags/bunting during the time in port.

3.3 A Berthing Plan and an overview of the Port are included overleaf.



Sail Training International

VLADIVOSTOK

4 TOWN PLAN	
<p>4.1 List of in port Facilities:</p> <p>tbc</p> <p>Post Office Banks Crew Centre Venues for Events Bus Stops for Crew transport Crew Parade Route Churches and other places of worship</p>	<p>Map Reference tbc</p>
<p>4.2 Town Information</p> <p>Business / Shop opening hours Museums Swimming pool Etc.</p>	<p>tbc</p>
<p>4.3 A Town Plan is attached overleaf</p>	<p>tbc</p>

Yeosu & Vladivostok



VLADIVOSTOK

5 CAPTAINS' PROGRAMME

5.1 Captains' Dinner

- Wednesday 12 September, 1900 - 2300
- Location Yacht Club 7 foots (see map)
- Transport arrangements tbc
- Invitation (+ 1 guest) tbc

5.2 Afterguard (Ships' Officers') Party tbc

- Date, Time
- Location (see map)
- Transport arrangements
- Invitation (+ ? guests)

5.4 Captains' Briefing

- DAY RACE/PARADE OF SAIL FOR CLASS A SHIPS - Monday 10 September, 1630 - 1730
- Location Primorsky Region Administration
- FINAL PARADE OF SAIL - Thursday 13 September, 1630 – 1800
- Location Pier 30
- Transport arrangements tbc

Yeosu & Vladivostok



VLADIVOSTOK

6 CREW PROGRAMME

6.1 Crews' Party

- Monday 10 September, 2000 - 2200
- Location (see map) Marine Village tbc
- Transport arrangements tbc
- Entry System (wristbands)

6.2 Crew Parade

- Wednesday 12 September, time tbc
- Route (see map) Korabelnaya Embankment
- Transport arrangements tbc

6.3 Prize Giving

- Wednesday 12 September, time tbc
- Location (see map) Pier 33
- Procedure & Format tbc

6.4 Crew Activities

tbc

A list of activities which the crew are encouraged to take part in is listed overleaf listing brief details, of description, location, day, date, time, transport arrangements. Please note that for some activities crews need to register using the forms provided at the end of this section.

Yeosu & Vladivostok



7 CITY CULTURAL PROGRAMME

Details of other cultural activities taking place in the City whilst the fleet is in port.

Sports planned include dragon boat racing, football, basketball, volleyball. Locations are in the area of the Dynamo Stadium and also the adjacent water area for the dragon boat racing.

tbc



VLADIVOSTOK

8 LIAISON SYSTEM	
8.1 Liaison System (Explanation of system)	tbc
8.2 Name & contact details of Chief Liaison Officer	tbc
8.3 Location of Liaison Office (see map)	tbc

Yeosu & Vladivostok



VLADIVOSTOK

9 SHIP SERVICES	
9.1 Fuel	
Bunkers available. Usually delivered by barge. Notice required.	
9.2 Water	
Fresh Water is available from shore or supplied by barge. Details tbc	
9.3 Electricity	tbc
9.4 Waste	
<p>Waste Oil/Garbage Disposal: All operations on sea and air pollution control are carried out by Portovik Co Ltd. Valves should be sealed by the laboratory assistant from Portovik Co Ltd. You can call the laboratory assistant through ship's Agent.</p> <p>Release of following items is prohibited in the Port:</p> <p>Any petroleum products or other substances detrimental for people's health.</p> <p>Bilge water, ballast oil water from cargo and hopper tanks and faecal waters.</p> <p>Water used for washing holds (tanks) after perilous substances.</p> <p>Portovik Co Ltd can provide ship with waste containers, ballast, bilge and faecal waters collectors.</p>	
9.5 Gas	tbc
9.6 Repairs	tbc
<p>There is a ship repair yard close to the commercial port of Vladivostok territory. It can provide hull, engine, electrical and electronic equipment repair services on Master's order.</p> <p>Tel: +7 (423) 222 1063.</p>	
9.7 Stores	tbc
9.8 Ship Agents	
<p>Andrey N. Kuchin «Sovfracht-East» LLC Tel: +7 423 241 0257 110 Mobile +7 914 706 3261 skype: shkipper1975 e-mail: Kuchin@vvo.sovfracht.ru http://www.sovfracht.ru/en/group-companies/llc-sovfracht-east/ GMT +10</p>	

Yeosu & Vladivostok



VLADIVOSTOK

10 CREW SERVICES	
10.1 Crew Centre	tbc
<ul style="list-style-type: none">• Location (map ref) Ground floor of the passenger terminal building• Facilities	
10.2 Telephones	tbc
10.3 First Aid	tbc
10.4 Laundry Facilities	tbc
<ul style="list-style-type: none">• Location (map ref) Berth 30 area• Description for use	
10.5 Toilets and Showers	tbc
<ul style="list-style-type: none">• Location (map ref) Berth 30 area	

Yeosu & Vladivostok



VLADIVOSTOK

11 FORMS

To Include: tbc

- Customs and Immigration
- Crew Activities
- Ship Services

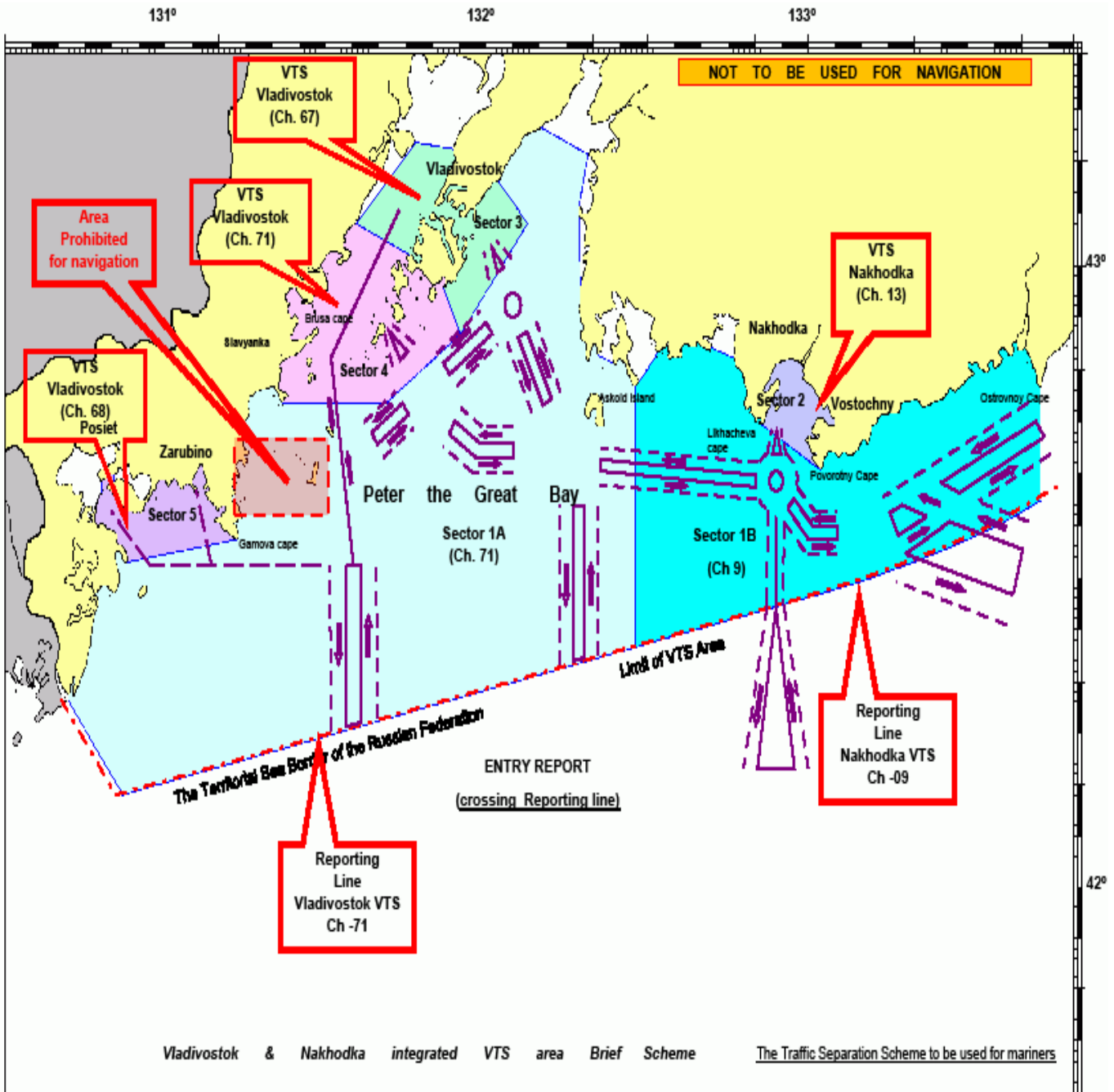
14. Emergency Contact Details

Port Authority	Telephone: (24hrs in case of emergency) tbc
Fire	101
Medical	103 Medical: Territory Clinical Hospital, Aleutskaya Street 57. Stomological Hospital, Morozova Street 7. Out-Patient Clinic of Far Eastern Basin Hospital, Beregovaya Street 3.
Police	102
Coastguard	tbc
Others	GENERAL EMERGENCY 112

Yeosu & Vladivostok



VLADIVOSTOK



Yeosu & Vladivostok

