



THE TALL SHIPS RACES 2018
organised by Sail Training International


Sunderland
City Council

CAPTAINS' MANUAL



SUNDERLAND
10-14 JULY 2018

www.tallshipssunderland.com

#WEARONBOARD

CONTENTS

1.	Contact Addresses and Telephone numbers	4
1.1	Port and Sail Training International Contacts	3
1.2	Consulates	4
2.	Arrival Arrangements	7
2.1	Charts	7
2.2	Frequencies	7
2.3	Call Signs	8
2.4	Navigation	8
2.5	Pilots and Port	16
2.6	Tugs	19
2.7	Customs & Immigration	19
2.8	Security	22
2.9	Port Health	23
3.	Berthing	27
3.1	Special berthing Instructions	27
3.2	Formalities	27
3.3	Berthing plan	27
4.	City Plan	31
4.1	List of City Facilities	31
4.2	City Information	32
4.3	City Plan	34
5.	Captains' Programme	35
5.1	Captains' Dinner	35
5.2	Captains' Briefing	35
6.	Crew Programme	36
6.1	Crew Activities	36
6.2	Crew Parade	37
6.3	Prize Giving Ceremony	37
6.4	Crew Party	37

7.	Liaison System	39
7.1	Name & contact details of Chief Liaison Officer	39
7.2	Location of Liaison Office	40
8.	Ship Services	41
8.1	Fuel	41
8.2	Water	42
8.3	Electricity	42
8.4	Waste	42
8.5	Gas	42
8.6	Repairs	43
8.7	Ship Agents	44
8.8	Postal Deliveries	45
9.	Crew Services	47
9.1	Crew Centre	47
9.2	Telephones	47
9.3	First Aid Posts	47
9.4	Laundry	47
9.5	Toilets & Showers	48
10	Emergency Contact Details	49

1. CONTACT ADDRESSES AND TELEPHONE NUMBERS

1.1 PORT AND SAIL TRAINING INTERNATIONAL CONTACTS

Port Committee (Map Ref TBC)

Bronze Event Control, Cable House, Port of Sunderland
Contact Name: Michelle Daurat
Telephone Number: 0044 191 553 1999

Volunteer Centre – Event Zone A (Map Ref TBC)

Port of Sunderland
Contact Name: Shirley Thompson and Sue Gibson
Telephone Number: 0044 191 565 6626

Volunteer Centre – Event Zone C

St Peter's Campus
Contact Name: Katherine Lavender and Mark Robinson
Telephone Number: 0044 191 510 3956

Harbour Office (Map Ref TBC)

Port Control, Port of Sunderland
Contact Name: Capt Kevin Ullah
Telephone Number: 0044 191 553 2147

Sail Training International Race Office (Map Ref TBC)

Cable House, Port of Sunderland
Telephone Number: 0044 191 565 3159

Sail Training International Race Committee Office (Map Ref TBC)

Cable House, Port of Sunderland
Telephone Number: 0044 191 565 8113 Race Inspector

Media Centre (Map Ref TBC)

Port of Sunderland
Contact Name: Rose Peacock
Telephone Number: 0044 191 514 4243

Map references refer to the City Plan which can be found in section 4

1.2 CONSULAR ADDRESSES AND TELEPHONE NUMBERS

Embassy of Belgium

17 Grosvenor Crescent, Belgravia, London SW1X 7EE
Tel: 0044 20 7470 3700 or 0044 7710 703 639 (Emergency number, only in use out of office hours)
Fax: 004420 7470 3795
Email: London@diplobel.fed.be

Embassy of the Republic of Bulgaria

186-188 Queen's Gate, London SW7 5HL
Tel: 004420 7581 3144, 004420 75849400
Fax: 004420 7584 4948
Email: consular@bulgarianembassy.org.uk

Embassy of the Kingdom of Denmark

55 Sloane St, Knightsbridge, London SW1X 9SR
Tel: 004420 7333 0200 Fax: 004420 7333 0270
Email: lonamb@um.dk

Embassy of Estonia

44 Queen's Gate Terrace, London SW7 5PJ
Tel: 004420 7838 5388
Fax: 004420 758 93 430
Email: london@mfa.ee

Embassy of Finland

38 Chesham Place, London SW1X 8HW
Tel: 004420 7838 6200
Fax: 004420 7235 3680
E-mail: consulate.lon@formin.fi

Embassy of France

58 Knightsbridge, London SW1X 7JT
Tel: 004420 7073 1000
Email: ecrire.londres-fslt@diplomatie.gouv.fr

German Embassy

23 Belgrave Square, London SW1X 8PZ
Tel: 004420 7824 1300
Fax: 004420 7824 1449
Email: info@london.diplo.de

High Commission of India

India House, London WC2B 4NA
Tel 004420 8629 5950 or 004420 7632 3035 (after Office hours)
Fax: 004420 7836 4331
Email: info.london@hcilondon.in

Embassy of Latvia

Consular Section, Grove House, 248A Marylebone Road, London NW1 6JZ
Tel: 004420 7312 0041
Fax: 004420 731 200 42
Email: consulate.uk@mfa.gov.lv

Embassy of the Netherlands

38 Hyde Park Gate, Kensington, London SW7 5DP
Tel: 004420 7590 3200 Fax: 004420 7225 0947
Email: DCV-247CC-NL@minbuza.nl

Royal Norwegian Embassy

25 Belgrave Square, Belgravia, London SW1X 8QD
Tel: 004420 7591 5500
Fax: 004420 7245 6993
Email: konsulat.london@mfa.no

Embassy of the Republic of Poland

10 Bouverie Street, London EC4Y 8AX
Tel: 004420 3078 9618
Fax: 004420 7936 3571
Email: london.op@msz.gov.pl

Consulate General of Portugal

3 Portland Place, Marylebone, London W1B 1HR
Tel: 004420 7291 3770
Fax: 004420 7235 0739
Email: londres@mne.pt

Embassy of the Russian Federation

5 Kensington Palace Gardens, London W8 4QS
Tel: 004420 7229 6412
Fax: 004420 7727 8625
Email: info@rusemb.org.uk

Embassy of Sweden

11 Montagu Pl, Marylebone, London W1H 2AL
Tel: 004420 7917 6400
Fax: 004420 7724 4174
Email: ambassaden.london@gov.se

Slovenia

17 Dartmouth Street, London SW1H 9BL

Tel: 004420 7222 5700

Fax: 004420 7222 5277

Email: sloembassy.london@gov.si

Vanuatu Embassy (to EU)

Avenue de Tervueren 380, Chemin de Ronde 1150, Brussels, Belgium

Tel: 0032 2771 7494

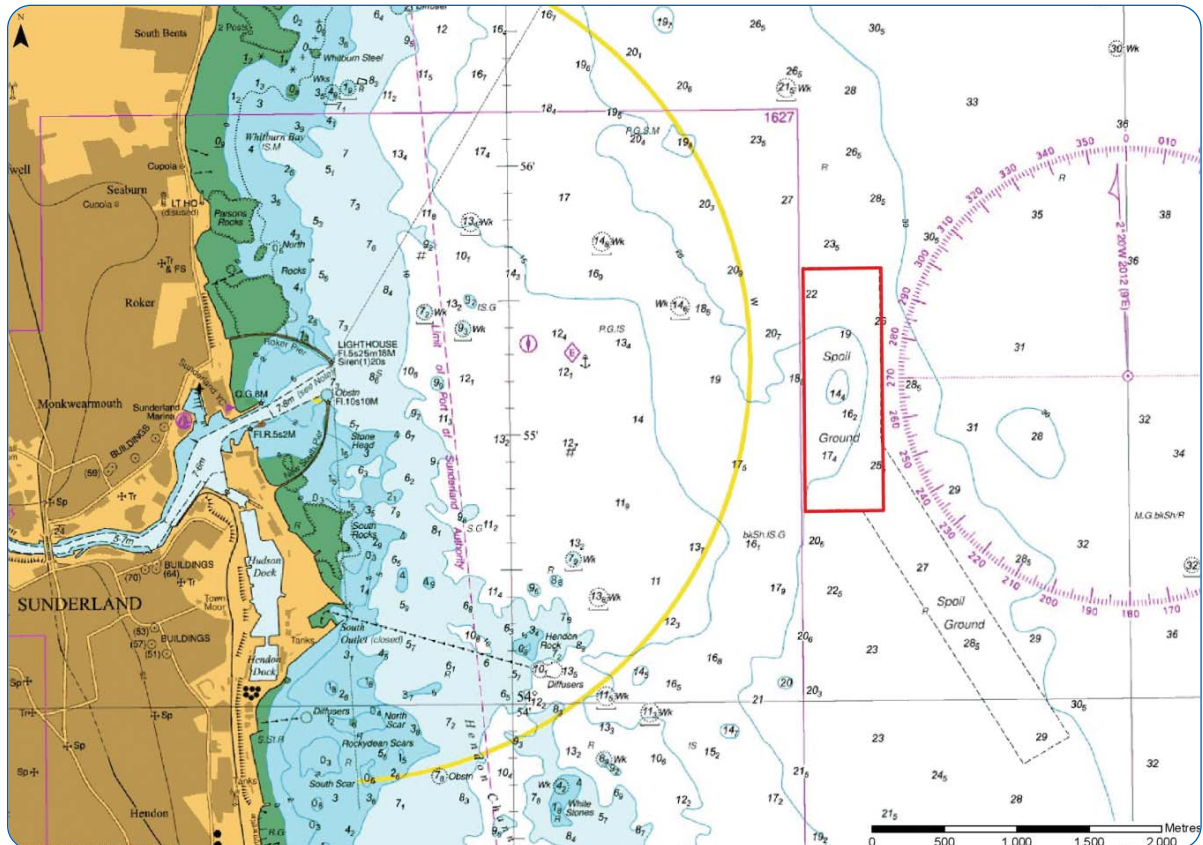
Fax: 0032 2771 7494

Email: info@vanuatuembassy.be

2. ARRIVAL ARRANGEMENTS

2.1 Charts

All vessels should have up to date copy of chart 1627 & 152



2.2 Frequencies

Pilot Vessel

VHF Frequency: Ch 14

Local Port Services (LPS), Port Control

Call: Sunderland Harbour Radio

VHF Frequency: Ch 16, 14, 11

Port Authority

VHF Frequency: Ch 16, 14, 11

HOURS: H24

VHF Channel 14 is the principle Port Operations frequency and should be used for all arrival communications, Pilotage requests, and emergency situations. Ch. 11 is used as a working berthing channel from crossing the bar inwards. A listening watch is maintained on Ch11, 14 and 16

Port Control will advise the vessel of their berth (or berthing area) and arrangements on arrival off the port. When crossing the bar (Inwards) vessels will be directed to channel 11 vhf and will be able to contact the berthing. Some vessels may be required 2 or 3 abreast and should have fenders prepared.

2.3 Call Signs

Sunderland Port Control/Sunderland Harbour manned 24/hr

UNCTAD LOCODE: GB SUN

2.4 Navigation

Situated at the mouth of the River Wear, the harbour is safe and easy to take, the entrance being protected by Roker and New South Piers which sweep out into the sea in the form of two converging curves and enclose an outer harbour water area of about 53 hectares.

Within these protecting piers, the Old North and South Piers are situated on either side of the river entrance, beyond which is the inner harbour.

The current operational port area encompasses the South Docks and river berths on the south side of the River Wear, seaward of the western end of Corporation Quay. Commercial traffic also navigates upriver to the Fish Quay, and occasionally to Deptford and Pallion, subject to navigating during daylight hours and strict restrictions on water/air draught and dimensions.

Procedure

- 1 Pilotage is compulsory for:
 - a All vessels 50 metres or more in length;
 - b All vessels assisted by tugs or while under tow;
 - c Any vessel with a defect in its hull, machinery or equipment, which might materially affect the navigation of the vessel;
 - d Passenger vessels, licensed to carry more than 12 passengers; and
 - e All vessels carrying dangerous substances.
- 2 Notice of ETA: Vessels should forward ETA together with pre-arrival information, namely ISPS PAN, Crew List, Cers work book, Waste Declaration and Dangerous Goods Manifest (if applicable) at least 24 hours in advance of arrival at Pilot Station (or as soon as practicable if inward voyage less than 24 hours duration).
- 3 Vessels are requested to call when 2 hours away and then again when 1 hour away from pilotage embarkation point.
- 4 When approaching Port Limits, anchoring or navigating within, vessels must maintain continuous listening watch on VHF Ch 16 and 14.
- 5 Designated pilot boarding station is in position 54° 55'.34N 01° 19'.88W, or within 1.5 nm radius of Roker Pier Lt, as directed.

- 6 Towage – All vessels are requested to advise Sunderland Harbour Radio no later than 24 hours in advance of their requirements , if any, for tugs

NOTE:

Hydrographic and weather reports available on request.

Navigation Aids

The following aids to navigation are provided within the Port and are subject to inspection by Trinity House.

Name	Latitude	Longitude	Type	Characteristics
Roker Lt Hse	54 55.279 N	001 21.147 W	Lighted Beacon	Fl W 5s/Tower R & W Bands
Red Can Buoy	54 55.176 N	001 21.157 W	Lighted Buoy	Qk.Fl.R/Can R
New South Pier	54 55.137 N	001 21.171 W	Lighted Beacon	Fl W 10s/Tower W
Old North Pier	54 55.128 N	001 21.601 W	Lighted Beacon	Qk.Fl.G
Old South Pier	54 55.032 N	001 21.678 W	Lighted Beacon	Fl R 5s/Can R
Wave Basin Battery	54 54.992 N	001 21.802 W	Lighted Beacon	Fl R 2.5s
North Side Traffic Lt Mast	54 55.075 N	001 21.814 W	Traffic Signal	3 F R (vert), 3 Fl R (vert), 3 F G (vert)
Greenwells Quay	54 54.952 N	001 21.863 W	Lighted Beacon	2 F R (vert)
North Dock Outer Basin	54 55.045 N	001 21.897 W	Lighted Beacon	Fl G 5s
North Dock Entrance 2	54 55.033 N	001 21.967 W	Unlighted Beacon	Pole G/Conical G
North Dock Entrance 1	54 55.042 N	001 22.000 W	Lighted Beacon	Fl (2) G 10s/Pole G
Potato Garth	54 54.973 N	001 22.012 W	Lighted Buoy	Fl G Q/No topmark
Sand Point	54 54.895 N	001 22.0759 W	Lighted Buoy	Fl G 2.5S/No topmark
North Dock Slipway End	54 55.040 N	001 22.015 W	Unlighted Beacon	Pole Y/X
North Sands Slipway End	54 55.015 N	001 22.066 W	Unlighted Beacon	Pole B/Conical G
Deptford Sewer Outfall	54 54.814 N	001 24.150 W	Unlighted Beacon	N Board
Pallion Dock	54 54.801 N	001 24.474 W	Lighted Beacon	2 F R (vert)/Pole R/Can R
Gladstone House	54 54.744 N	001 21.672 W	Traffic Signal	3 F R (vert), 3 F G (vert)
QE2	54 54.340 N	001 21.630 W	Lighted Beacon	Fl G 5s
Youngs Quay	54 54.623 N	001 21.613 W	Lighted Beacon	Fl R 5s
Hendon Dock Junction (West Side)	54 54.259 N	001 21.598 W	Lighted Beacon	Fl G 2.5s

Inwards:

Vessels may pass IN when three green lights in a vertical line are exhibited on both Old North Pier and at the North side of No. 3 Gateway.

Outwards:

Vessels may pass OUT when three green lights in a vertical line are exhibited at the South side of No. 3 Gateway and three red lights in a vertical line are exhibited at the Old North Pier. Vessels may not proceed in or out of the South Docks if three red lights in a vertical line are exhibited at No. 3 Gateway.

Dock closed for traffic:

No signals will be shown.

Prohibition:

Every vessel shall comply with the foregoing signals and no vessel shall pass in, or pass out of the docks, or attempt to do so, other than in accordance with such signals.

Port closed:

Three flashing red lights in a vertical line exhibited from Old North Pier, both to seaward and towards the Tidal Basin, indicate that the river is closed to traffic.

Vessels may obtain information regarding passage into and out of South Docks and Port Closure status from "Sunderland Harbour Radio" on VHF channel 14.

Further information concerning port entry and navigation may be obtained from "Admiralty Charts and Publications."

Sunderland Marina (North Dock) is situated opposite the entrance to South Docks and is managed by a private organisation. Craft can contact "Sunderland Marina" directly on Marine VHF Channel M (37).

The harbour channel, between the outer piers and west end of Corporation Quay, has been dredged to a depth of 7.5 metres LAT, with a depth of 8.8 metres LAT at Corporation Quay itself. **These depths are subject to siltation.**

A speed limit of 6-knots applies to the entire harbour

Tidal streams to seaward of the Harbour entrance are indicated on Admiralty charts.

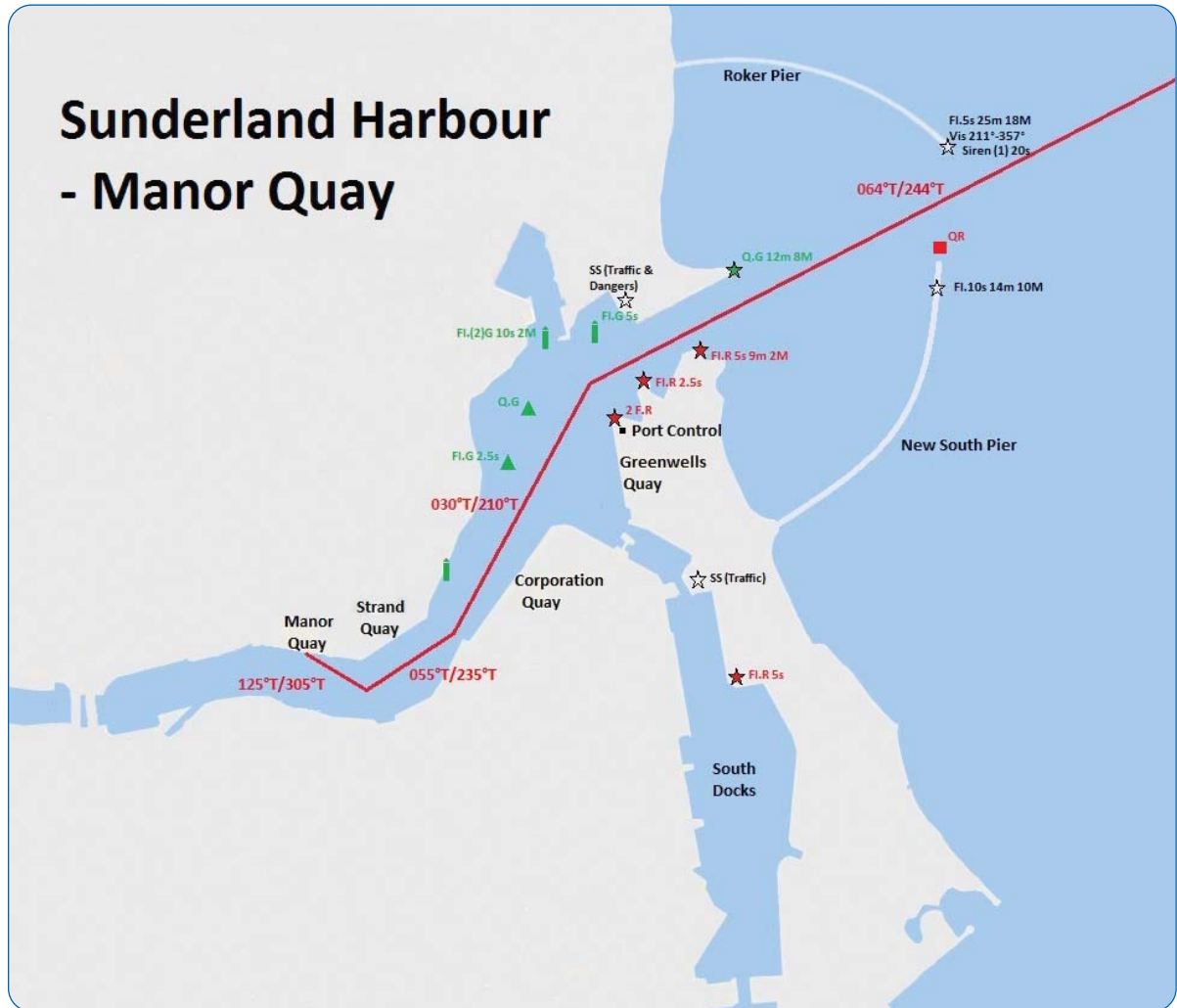
In the River Wear, which is subject to freshets, the streams in the vicinity of Sunderland run as follows

Time from HW Tyne	Remarks
- 0605	ingoing stream commences
- 0005	outgoing stream commences

Flow

After prolonged northerly winds, a strong southerly flow with a rate of about 3 knots perhaps experienced in the approach to the Harbour entrance.

Entry to River Wear



Entry to Hudson/Hendon Dock System

Dock gates are manned 24 hours per day and are contactable through Port Control (PC)VHF 11, 14

Entry through into/out of the dock system is via the “Half tide basin” where you will pass through two sets of gates and a swing bridge. Vessels wishing to pass through In/Out MUST make prior arrangements through port control to do so in order that the bridge can be opened.

Passage through the dock system is controlled by PC and a light system (on top of Gladstone house) the latter showing three lights in a vertical line both to seaward (for entering) and Dockside (for exiting). The light will show 3 Greens in a vertical line when you may transit and 3 reds when closed









Dock gates are generally opened approximately 2 hours before High Water (HW) until HW at which time either No1 or No3 gates will be closed depending on the next planned operation.

It is possible to lock vessels in/out of the dock system with prior arrangements through PC This operation can be performed at any stage of the tide, however there may be draft restrictions, (vessels with a draft of 4.1m or less may pass at time), however this can be very time consuming and at some states of tide not advantageous.

The lock system can accommodate a max length vessel of 141M with a 16.5M beam and a Max beam vessel of 18.9M with a max length of 100M. Contact with the port should always be made regarding vessel size and lock entry.

The lock gate open on a level approximately 2 hours before High water and will close on High water vessels wishing to transit through the lock system must give advance warning of at least 12 hours.

Traffic Signal

Signal	Signal	Meaning
 No3	 Old north Pier	Vessel may enter docks
 No3	 Old north Pier	Vessel may leave docks
 No3	 Old north Pier	Dock closed for traffic

South docks traffic signals are displayed from the framework tower on Old North Pier and on top of Gladstone House, at No3 gateway at the N end of Hudson Dock, when the docks are open for traffic. These lights are fixed lights, in contrast to the danger signals.

When there is a danger in the harbour, three red flashing lights disposed vertically are exhibited from a frame work tower on Old North Pier. This signal indicates vessels must not enter or leave harbour.

All vessels and craft must comply with the following instructions concerning navigation to and from the South Docks complex and river closure:

South Dock and "Port Closed" signals

Movement of vessels into and out of the South Docks is controlled by colour light signals for both daytime and night time use.

These signals are positioned at No. 3 Gateway, mounted on the roof of the building just to the East side of the gateway (Gladstone House) and on the lattice steel tower on the inner end of the Old North Pier.

The signals at No. 3 Gateway are visible from the Tidal Basin and the Half-Tide Basin and from the South Docks. The signals on the Old North Pier are visible from vessels entering the harbour and from the lower part of the river.

The signals will be for both daytime and night time when the dock gates are open for traffic and must be observed by all vessels as follows

Maximum parameters for vessels entering South Docks:

South Docks: Length - 141.8 metres; Beam - 18.9 metres (note max beam varies with length); Draught – 5.9 metres (MHWN) or 7.0 metres (MHWS). **Advice must first be sought from the Harbour Master or his deputies in respect of any vessel approaching all three dimensions. Maximum permitted length will vary with beam.**

Tides

(0190 Sunderland)

54°55'N 1°22'W England 10 July 2018 +0000

Predictions are based on RIVER TEES ENTRANCE

08/07/2018

High 11:34 4.5m
 Low 05:35 2.0m
 Low 18:08 1.6m
 Low 19:11 1.4m

09/07/2018

High 00:23 4.4m
 High 12:38 4.6m
 Low 06:40 1.8m
 Low 20:11 1.2m

10/07/2018

High 01:22 4.6m
 High 13:39 4.8m
 Low 07:41 1.5m

11/07/2018

High 02:17 4.8m
 High 14:37 5.0m
 Low 08:39 1.2m
 Low 21:07 1.0m

12/07/2018

High 03:09 5.0m
 High 15:32 5.2m
 Low 09:34 0.9m
 Low 22:01 0.9m

13/07/2018 New Moon

High 03:58 5.2m
 High 16:25 5.4m
 Low 10:28 0.6m
 Low 22:51 0.8m

14/07/2018

High 04:47 5.4m
 High 17:17 5.4m
 Low 11:19 0.4m
 Low 23:40 0.7m

15/07/2018

High 05:34 5.5m
 High 18:08 5.4m
 Low 12:09 0.3m
 15/07/2018

16/07/2018

High 06:22 5.5m
 High 18:59 5.3m
 Low 00:28 0.8m
 Low 12:58 0.3m

Tidal Levels

Mean Spring range about 4.4m

Mean neap range about 2.2m

Winds between WNW and NNE increase the height of sea level, and winds between SSW and SSE have the opposite effect

Natural Conditions

Tidal streams to seaward of the harbour entrance are given on the chart. In the River Wear, which is subject to freshets, the streams in the vicinity of Sunderland run as follows:

Time from HW Tyne	Remarks
-0605	In-going stream commences
-0005	Out-going stream commences

Flow

After prolonged N winds a strong southerly flow with a rate of about 3kn may be experienced in the approach to the harbour entrance

The following approximate distances apply to the harbour channel:

- Between Roker Pier and New South Pier ends - 232 metres
- Between Roker Pier and red can buoy - 207 metres
- Between Old North Pier and (Old) South Pier - 114 metres
- Maximum channel width - 60 metres
- Swinging basin - capable of swinging vessels with a maximum length of 200 metres. (with tugs)

Larger or deeper-draughted vessels may be permitted to enter port under certain conditions, which have been approved in advance by the Harbour Master.

Reliance should not be placed solely upon published data regarding water depths. Where appropriate, advice should be sought from the Harbour Master or his deputies.

Vessels intending to enter/move within or sail from the port must contact Sunderland Harbour Radio on Marine VHF channel 14, 11 or 16.

24 hours' notice of ETA for shipping is generally required, with amendments at least two hours in advance.

Port Authority

Port of Sunderland, Capstan House, Greenwells Quay, South Docks, Barrack Street, Sunderland, SR1 2BU

Arrival Information:

All vessels bound for a port within the EU must report to the Port Authority portmarineoperations@sunderland.gov.uk at least 24 hours prior to arrival, or, if the voyage is less than 24 hours, no later than the time of departure from the previous port. The report shall include the following information:

- Name
- call sign

- IMO or MMSI number
- Port of destination
- ETA and ETD at port of destination
- Total number of persons on-board.

2.5 Pilots and Port

Telephone: +44 (0)191 553 2148
(Contact LPS if no reply)

Fax: +44 (0)191 553 2145

Pilot Vessel: Heron & Triton

VHF Frequency: Ch 14, 11,

Local Port Services (LPS), Port Control

Call: Sunderland Harbour Radio

VHF Frequency: Ch 16, 14, 11

Telephone: +44 (0)191 514 2752

+44 (0)191 567 0161

+44 (0)191 553 2149

Fax: +44 (0)191 553 2145

Email: portmarineoperations@sunderland.gov.uk

Harbour Master

Telephone: +44 (0)191 553 2146

(Contact LPS if no reply)

Fax: +44 (0)191 553 2120

Port Authority

VHF Frequency: Ch 16, 14, 11

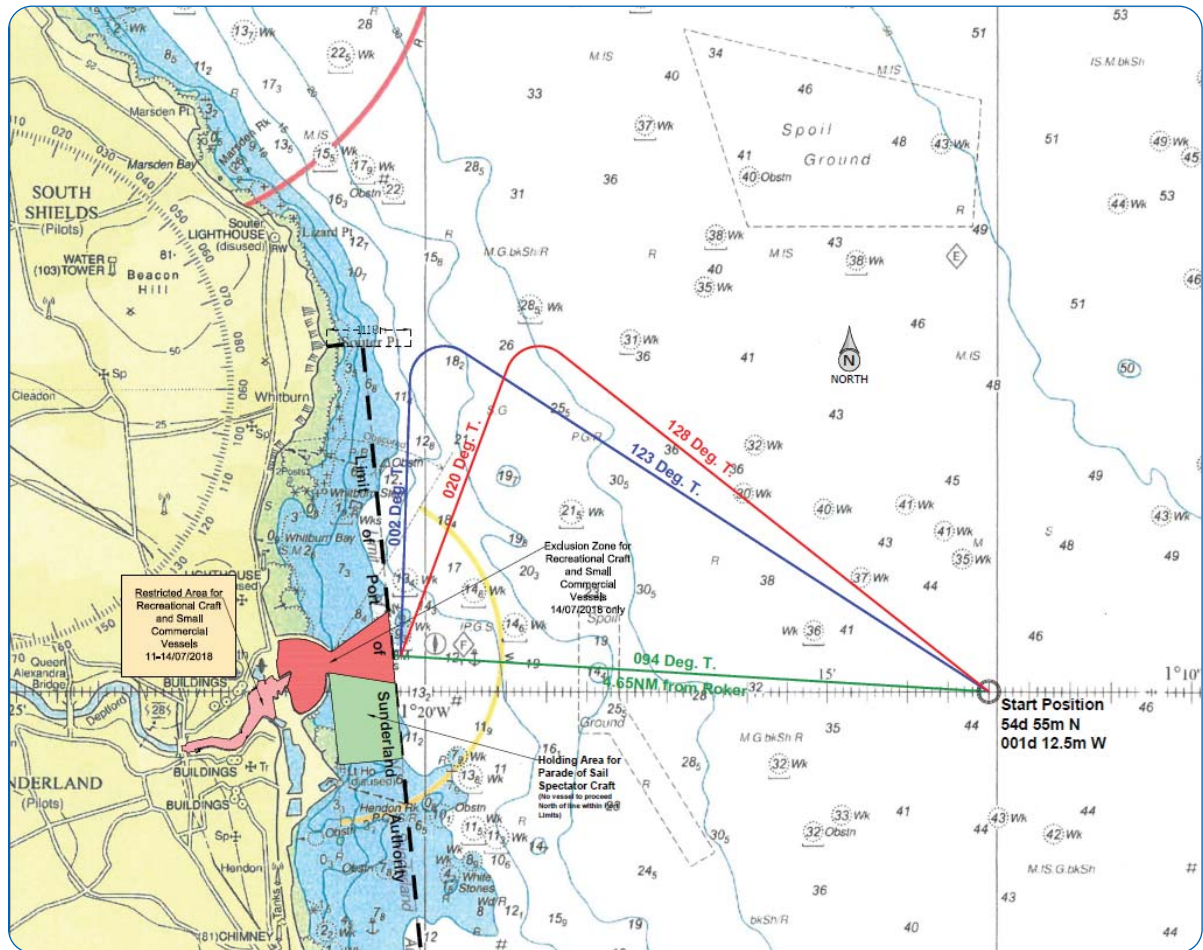
Telephone: +44 (0)191 553 2100 (0800 – 1700)

+44 (0)191 514 2752 (H24)

Fax: +44 (0)191 553 2120

Email: portmarineoperations@sunderland.gov.uk

Parade of Sail



Plan

The Parade starts at Corporation Quay and makes its way down the Harbour Channel Eastward toward the Sea. After passing through the piers and leaving them approximately 0.5nm astern the parade turns Northwards (see above).

River berthed ships will undock and set sail first, with ships from the half-tide basin interspersed in their prescribed order as given at the Captains' Briefing, followed by the main body of the fleet from inside Hudson Dock.

Procedure

10:30hrs - selected ships to move into half tide basin – provision will be made for crew to embark/disembark during the ensuing period.

13:00 - All passengers to be on board for day-sailing (they should be warned in their joining instructions that vessels will not wait if they are late)

13:30 - River vessels prepare to slip berth - early vessels to proceed to waiting area (SE of Parade start TBC)

13:45 - Parade starts

15:15 - Lock free-flow – larger vessels transit and join Parade

16:30 - First vessel finishes Parade in Race Start area

16:00 - 17:30 Day-sailing vessels disembark passengers

18:30 - All vessels in race start area

19:00 - Class A Race start

19:30 - Class B Race start

19:45 - Class C/D Race start

Organisation

Harbourmaster or his delegated officer will issue instructions to the fleet via VHF. All instructions will come through Port Control.

Other Traffic

All non-Parade traffic other than Port vessels will be prohibited between the hours of 1200-1800hrs

Meteorological Considerations

Each vessel taken on its own merits i.e. what's bad for one may be ok for another

Delayed departure from Port

In the event of any participating vessel being unable to proceed to sea on the "Parade of Sail" day, the following contingency plan will apply:

This might affect all or a certain class of vessel(s) due to weather/sea conditions being beyond that vessels' capabilities or an individual ship because of mechanical/technical problems, a safety issue, crew illness, etc.

In such cases, the Port of Sunderland will to accommodate vessels within the Port, although it may be necessary to transfer to an alternative berth. Providing there are no safety issues, this may be at a river or dockside non-commercial berth.

It is anticipated that vessels will only be required to relocate in the event of a berth being required by a merchant ship for commercial purposes.

All berthing will be at the direction of the Harbour Master or his deputy. Where required, towage and/or assistance with mooring lines will be arranged through Port Control. Availability of towage, however, cannot be guaranteed and may not be readily available.

Vessels will depart from the Port as soon as conditions/circumstances have improved to an extent which allows safe departure.

Detailed instructions for participating vessels will be forwarded upon arrival as well as being discussed in the Captains' Briefing.

2.6 Tugs

One tug will be on station throughout the event and a second will be available on call. Tugs will be assigned to task by Port Control.

2.7 Customs & Immigration

(Forms available in Section 10)

Vessels arriving from outside the Common Travel Area

(United Kingdom, the Channel Islands, the Isle of Man and the Republic of Ireland, which collectively form a common travel area)

Border Force requirements

IMPORTANT: No crew member or passenger may disembark without prior clearance by Border Force (with the sole exception of crew tying up vessels who must return on board as soon as the vessel is secure).

IMMIGRATION

1. Legislation

All captains, crew members and passengers are reminded of the provisions of the Immigration Act, 1971 regarding entry into the United Kingdom.

In particular, Captains of Tall Ships should be aware of the following provisions:

A person shall be guilty of an offence, punishable on summary conviction with a fine of not more than Level 5 on the standard scale (currently £5,000) on the standard scale] or with imprisonment for not more than six months, if he fails to comply with the provisions of Section 27 and Schedule 2 of the Immigration Act, 1971 in the following cases:

- (a) if, being the captain of a ship or aircraft,—
 - (i) he knowingly permits a person to disembark in the United Kingdom when required under Schedule 2 or 3 to this Act to prevent it, or fails without reasonable excuse to take any steps he is required by or under Schedule 2 to take in connection with the disembarkation or examination of passengers or for furnishing a passenger list or particulars of members of the crew; or
 - (ii) he fails, without reasonable excuse, to comply with any directions given him under Schedule 2 or 3 [or under the Immigration and Asylum Act, 1999] with respect to the removal of a person from the United Kingdom.

2. Advanced passenger information and crew lists

- (a) Captains of Tall Ships must provide standard crew/passenger lists. The following information is required for all crew/passengers:
 - Full name
 - Date of birth
 - Nationality

Note: Should any member of crew/passenger hold 1951 Convention documentation (namely refugee documents) instead of a national passport, the nationality must be marked as **XXB** and not the nationality of the host nation. A visa is required unless the holder of UK-issued 1951 Convention documentation.

- Passport number

Note: Holders of 1951 Convention documents, if travelling as passengers, also require a visit visa, which must be obtained prior to arrival.

This information should be provided using the forms(s) appended to this document (Section 11), which should be sent by email to the following email addresses:

tallshipspre-arrivals@sunderland.gov.uk

Forms should be sent no less than 24 hours before the vessel is due to arrive at the Port of Sunderland, although it is preferable that the information is sent as early as possible to facilitate checks and help avoid delays. Failure to submit forms may lead to a vessel being refused access to the port.

- (b) Border Force strongly advises the Master of each vessel to make a copy of the passport bio data page (and UK visa, if applicable) of all passengers and crew prior to departure for the UK. This acts as proof of what was held at that point in time, besides aiding in supplying advanced passenger information (API).
- (c) The subject field of all emails should begin with the prefix "Tall Ships."
- (d) Crew: Section 33(1) of the Immigration Act, 1971 defines "crew" as all persons actually employed in the working or service of a ship. Further explanation is given within the Act which is available online via the following URL: <http://www.legislation.gov.uk/ukpga/1971/77/contents>
- (e) Passengers: Passengers are those who are paying for the unique privilege of working aboard an historic vessel, so although they may arrive and depart on board the vessel, they do not qualify under the terms of a crew member and visa requirements apply. No person without a Seamen's Book can be deemed to be crew for Border Force purposes.
- (f) Contacts for immigration-related enquiries are as follows:

Border Force at Newcastle Airport

Email: bfnewcastleairportdutydesk@homeoffice.gsi.gov.uk

Telephone: 0044191 214 4580/4126

Port of Tyne

Telephone: 0044191 2592772

3. Visas

- (a) Certain non-EU/EEA nationals, both passengers and crew, require visa to enter the UK. A list of those persons who would require a visa and the latest UK visa information can be found online at the following URL link:

www.gov.uk/government/publications/uk-visa-requirements-list-for-carriers

Please contact Border Force if any clarifications of the rules is required (see Section 2(f)).

- (b) It is the responsibility of individuals concerned to obtain any visa that may be necessary and failure to be in possession of such documents may have implications for them and the operations of the host vessel.
- (c) Failure to be in possession of a valid visa may render that person liable to be refused entry to the UK and to removal from the UK at the vessel's expense.
- (d) Entrants are also reminded that regulations governing visas, etc are liable to change.

Customs

- (a) There are certain goods you are not allowed to bring into the UK regardless of what country you are travelling from. This is to protect society, animal and public health, and the environment. Please note that the following is not a complete list, but includes the most important examples.
- (b) The following goods are banned completely:
- Controlled drugs such as cocaine, heroin, MDMA (Ecstasy), cannabis, barbituates, amphetamine, and methamphetamine;
 - Offensive weapons such as flick and gravity knives, death stars, swordsticks, stealth (non-metallic) knives, knives disguised as everyday objects, knuckledusters, blowpipes, truncheons, and some martial art equipment; and
 - Other weapons, self-defence sprays and electric shock devices such as stun guns.
- (c) All vessels must supply a standard crew and passenger list not less than 24 hours before arrival (see IMMIGRATION REQUIREMENTS - Section 2(a)).
- (d) Each vessel is requested upon arrival to hand over the Customs Declaration (using the appropriate FAL Forms 1 - 7) to the Liaison Officers, who will then forward them to Border Force (Customs). It is preferred that the Customs Declaration is sent with the crew forms. A copy must be retained on board.

However, it is preferred that the IMO-FAL forms are completed and emailed to bfnewcastleairportdutydesk@homeoffice.gsi.gov.uk prior to arrival.

Copies of these forms (IMO-FAL 1-7) can be downloaded from the Port of Sunderland and UK National Maritime Single Window websites via the following URL links:

<https://www.portofsunderland.org.uk/downloads>

<https://maritime.dft.gov.uk/supportmaritime.olg?opt=templates>

A copy of the completed forms should be retained on board for inspection by a Border Force officer who may wish to visit your vessel. You will also be required to provide details of any animals carried on your vessel.

- (e) The Master must declare all surplus duty-free stores (eg tobacco, alcohol) remaining on board. All surplus stores will remain under Customs control while the ship remains in the UK, the Master being responsible for their security. All duty-free alcohol and tobacco should therefore be locked up in secure on board storage. A limited amount of tobacco and alcohol goods can be left out for use by the working crew on board while in port.
- (f) It is illegal to land/load duty-free stores or to remove any goods from the bond while in port, without reporting this to Customs. Should this happen, all goods may be liable to forfeiture and the Master may be penalised. Any undeclared stores are liable to forfeiture. Bonds are liable to spot checks by Border Force officers.

2.8 Security/International Ship and Port Facility Security (ISPS) Code

The ISPS Code will continue to apply to all areas of the South Docks estate (including river berths) during The Tall Ships Races, the security level being set by the Department for Transport Maritime Security and Resilience Division. Any elevation above Security Level 1 (Normal) will be communicated to participating vessels as a matter of urgency.

At present, vessels engaged in The Tall Ships Races fall outside the scope of the ISPS Code, which nevertheless should be regarded as best practice for port and ship security.

Masters of all participating vessels are responsible for the security of their own vessel while in port.

Masters of all participating vessels are encouraged to familiarise themselves with the contents of the International Maritime Organisation (IMO) guidance document: "Non-mandatory guidelines on security aspects of the operation of vessels which do not fall within the scope of SOLAS Chapter X1-2 and the ISPS Code."

A copy can be downloaded from the GOV.UK website's publication portal or via the following URL link:

<https://www.gov.uk/government/publications/vessels-outside-the-scope-of-the-international-ship-and-port-facility-security-code-guidelines>

Following consultation with the Department of Transport Maritime Security and Resilience Division, it has been decided that all participating vessels (regardless of ISPS exemption or size) should submit a pre-arrival notification, using form UK NMSW - FAL 1 - General Declaration.

This form should be emailed to tallshipspre-arrivals@sunderland.gov.uk together with form NMSW FAL 5 & 6 - Crew and Passenger List. Forms can be downloaded

via the following URL links:

<https://www.portofsunderland.org.uk/downloads> or

<https://maritime.dft.gov.uk/supportmaritime.org?opt=templates>

Attention is drawn to Marine Safety Notice MSN 1831 (M+F) regarding minimum statutory reporting requirements.

Pre-arrival information (including crew lists) will be shared with UK Counter-Terrorism agencies. Police officers shall be present throughout the event and may make random low-key inspections of vessels in accordance with Schedule 7 of the Terrorism Act, 2000.

Schedule 7 provides power to stop and question passengers and crew, which does not require prior authority or any suspicion that the person stopped and questioned is involved in terrorism.

Further powers under Schedule 7 allows police officers to stop, question, search and detain people who are entering or leaving the UK. These powers also apply to persons travelling within the UK by ship.

The legislation applies only at a port or border area, including any place where a ship has moored or docked.

The Northumbria Police leaflet "Information on Police Powers Relating to Shipping - Schedule 7 to the Terrorism Act, 2000" will be made available to participating vessels.

2.9 Port Health

Sunderland City Council Environmental Health Department is responsible for carrying out the functions of Port Health Authority within the Port of Sunderland and as such is responsible for the enforcement of infectious disease controls.

Suspect Disease on Board a Ship

When arriving from a foreign port, a Master of a ship is required to report any suspected infectious disease or death on board amongst crew, passengers or animals/birds to the Port Health Authority. This report should be made not less than 4 hours and not more than 12 hours before arrival.

Such reportable incidents include:-

- a. the occurrence on board ship before arrival of:
 - i. the death of a person otherwise than as a result of an accident, or
 - ii. illness where the person who is ill has or had a temperature of 38°C or greater which was accompanied by a rash, glandular swelling or jaundice, or where such temperature persisted for more than 48 hours, or
 - iii. illness where the person has or had diarrhoea severe enough to interfere with work or normal activities.

- b. the presence on board of a person who is suffering from an infectious disease or tuberculosis or who has symptoms which may indicate the presence of an infectious disease or tuberculosis;
- c. any other circumstances on board which are likely to cause the spread of infectious disease or other danger to public health; and
- d. the presence of animals or captive birds, and the occurrence of mortality or sickness amongst such animals or birds.

The Master may be required to complete a Maritime Declaration of Health and should also have ready for the port health officer a list of passengers and crew leaving the ship together with the addresses they are going to in the United Kingdom.

The Maritime Declaration of Health form is downloadable from the Port of Sunderland website in MS Word format via the following link:
<https://www.portofsunderland.org.uk/downloads>

Where a report is required The Public Health (Ships) Regulations 1979 (as amended) specify that no person other than a pilot, customs officer, immigration officer or port health officer shall board or leave a ship without consent of the Port Health Authority. The ship is required to obtain a "free pratique" for health clearance.

In some cases, it may be possible to grant "free pratique" by radio, otherwise a Port Health Officer will meet the vessel on arrival. Vessels requiring pratique should show the International Maritime Signal Flags – "Q" flag.

"Free pratique" is essentially the licence given to a ship to enter a port on the assurance that she is free from contagious diseases.

Ship Sanitation Certificates

International Health Regulations provide for the global issuance of ship sanitation control/ exemption certificates. Ship Sanitation Certificates are issued by Sunderland City Council environmental health officers following a request for inspection of a ship and are valid for six months. If the ship inspection is satisfactory, a Ship Sanitation Control Exemption Certificate will be issued.

If Public Health risks are found on board ship a Ship Sanitation Control Certificate will be issued with a requirement for problems to be remedied within a certain timescale.

Importation of rabies susceptible animals

The United Kingdom maintains strong legislation and control policies to help prevent the spread of rabies because our indigenous wild animals and domestic pets do not routinely carry the rabies virus.

Controls include requirement for masters of all vessels arriving in UK ports from overseas, to report the presence of any animal on board to both the Port Health Authority and Border Force.

As Sunderland is not a designated port for the purposes of the EU Pet Travel Scheme (PETS), rabies-susceptible animals may not be imported (including landing) into the UK without being subject to strict quarantine regulations.

Animals must therefore be confined securely on board vessels and locked behind two separate doors at all times. Animals must not be exercised on quays, jetties or other moorings as this is deemed to be 'landing' and 'importation'.

The presence of an animal on board any vessel arriving at the Port of Sunderland in connection with The Tall Ships Races must be notified by email to Border Force, Port Health and Authority and the Port of Sunderland at least 24 hours before arrival to the following addresses:

tallshipspre-arrivals@sunderland.gov.uk

porthealth@sunderland.gov.uk

For further advice or information contact Sunderland City Council's Environmental Health team on +44 (0)191 520 5555 or email porthealth@sunderland.gov.uk

Masters of vessels carrying animals on board are advised to familiarise themselves with the following documents:

- Bringing your pet dog, cat or ferret to the UK: www.gov.uk/take-pet-abroad
- Merchant Shipping Notice, MSN 1799 (M+F) – Rabies – Carriage of Animals on Ships: www.fisg.org.uk/MCA/upload/msn1799.pdf

3. BERTHING

3.1 Special Berthing Instructions

- Vessels are to ensure they have the appropriate Gangways. Vessels over 50 LOA which will be hosting deck events or offering open ship are to ensure that they have one forward and aft. Whilst a small number of gangways may be available on loan from the port, nets will need to be purchased by vessel operators.
- Vessels are to arrive with a sufficient number of mooring ropes, at sufficient length, taking into account tidal range.
- Ships are to arrive with sufficient fendering, fenders may be available from the port or through local suppliers, however charges may apply.

3.2 Formalities

Dressing

All ships are kindly requested to be suitably dressed for the occasion.

Colours

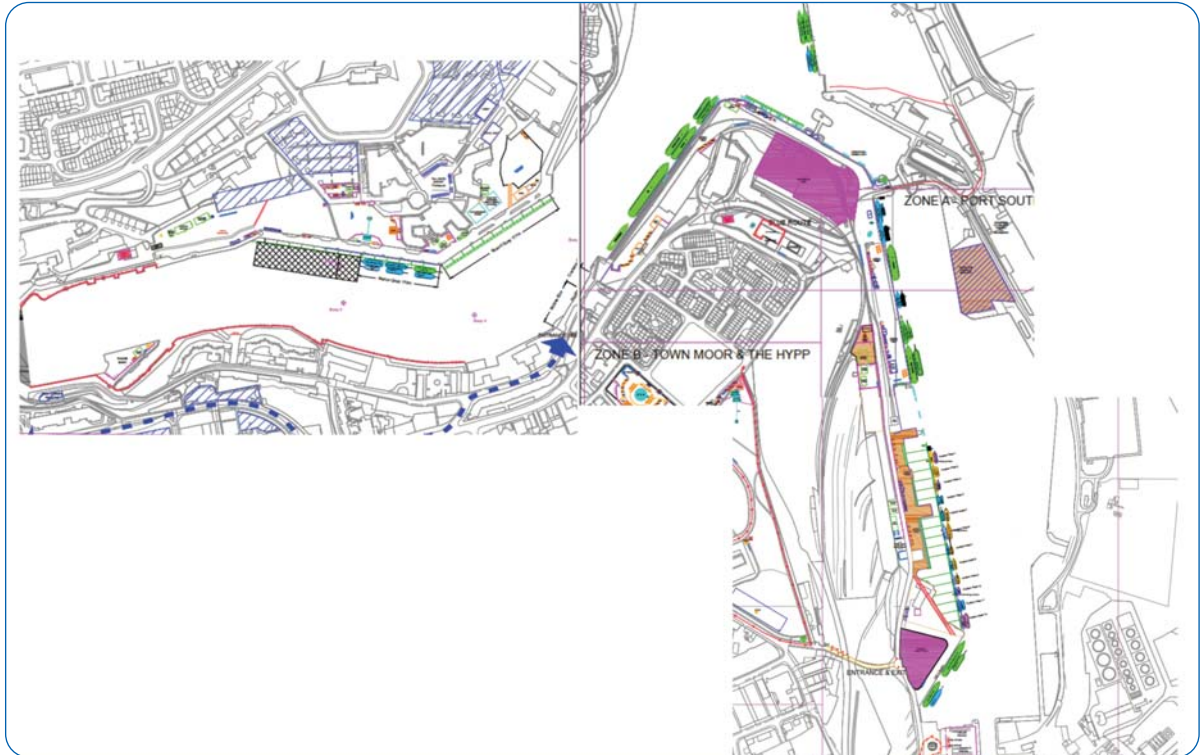
Colours and Ensigns are requested to be flown as per normal protocols.

Colours can be flown through the hours of darkness if an appropriately focused light shines on them.

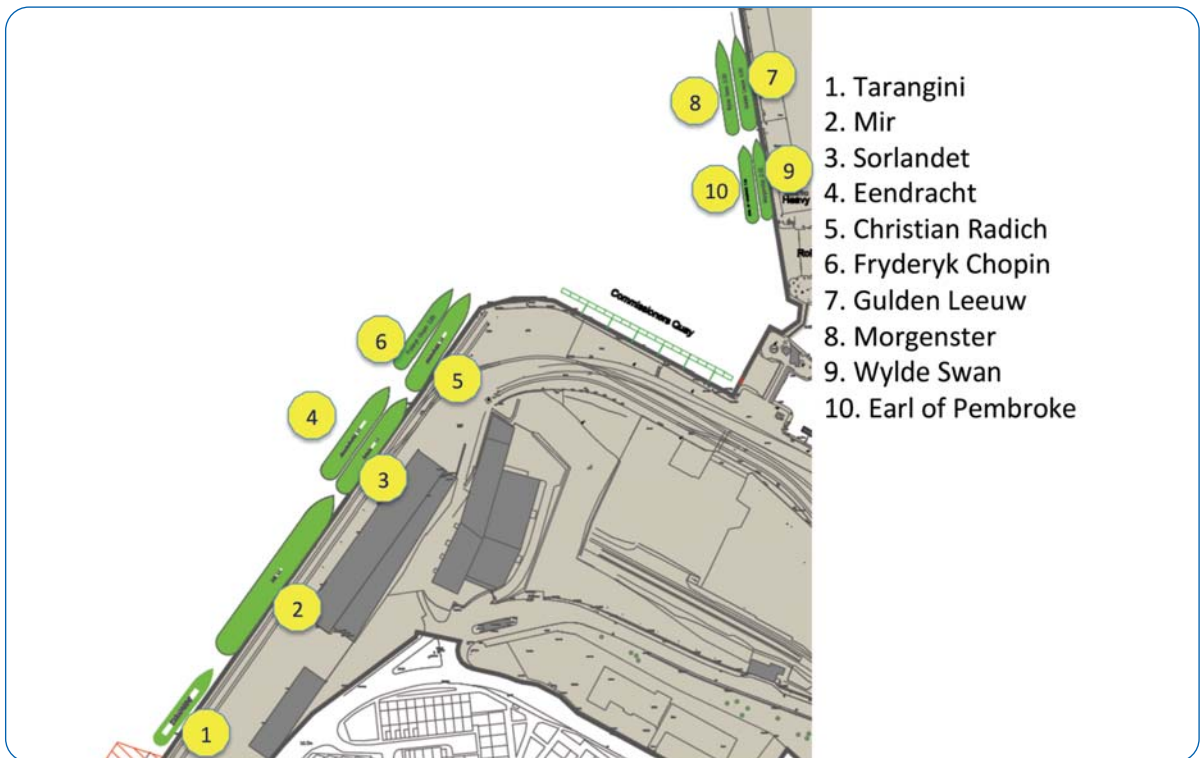
3.3 Berthing Plan

A Berthing Plan and an overview of the Port are included overleaf.

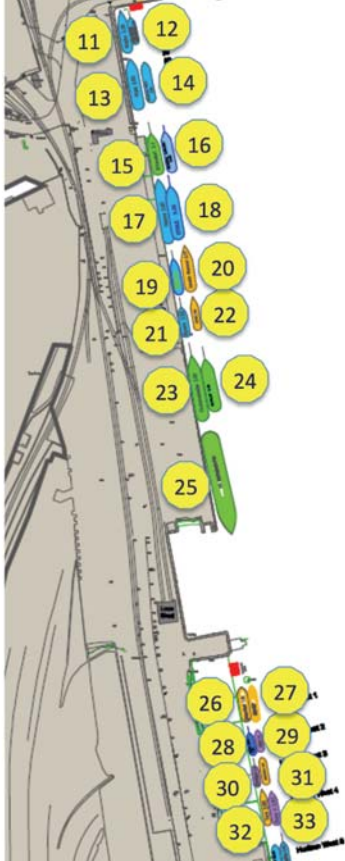
Berthing plan overview



Ship location plan – Corporation & Greenwells Quay



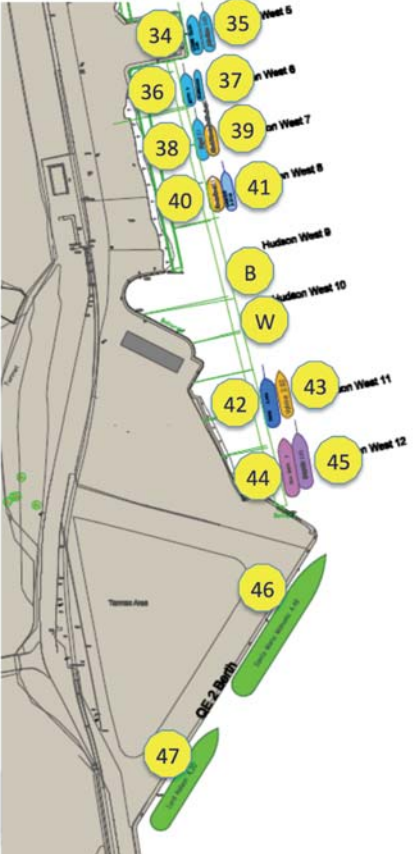
Ship location plan – Hudson Dock (North)



A map of Hudson Dock (North) showing 33 numbered ship positions. The ships are arranged in two main rows along the dock. The top row contains ships 11 through 25, and the bottom row contains ships 26 through 33. Each ship is represented by a colored icon and a yellow circle with its number. The dock is shown in grey, and the water is in light blue.

- 11. Maybe
- 12. Morning Star of Revelation
- 13. Atyla
- 14. Challenge Wales
- 15. Shtandart
- 16. General Zaruski
- 17. Helena
- 18. Etoile
- 19. Caroline af Sandnes
- 20. Zenobe Gramme
- 21. Wyvern
- 22. Spaniel
- 23. Oosterschelde
- 24. Royalist
- 25. Alexandra Von Humboldt II
- 26. James Cook
- 27. Espirit
- 28. Stina Mari
- 29. Aries
- 30. Tuulelind
- 31. Hosanna
- 32. Tara
- 33. Rona II

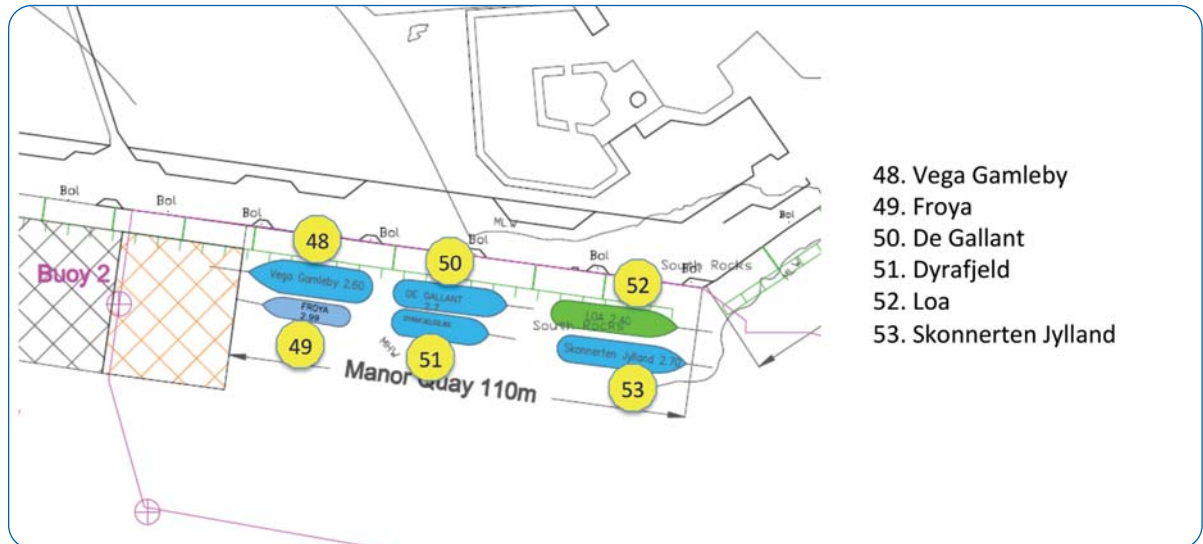
Ship location plan – Hudson Dock (South)



A map of Hudson Dock (South) showing 13 numbered ship positions. The ships are arranged in two main rows along the dock. The top row contains ships 34 through 41, and the bottom row contains ships 42 through 45. Each ship is represented by a colored icon and a yellow circle with its number. The dock is shown in grey, and the water is in light blue. Labels 'Hudson West 6' through 'Hudson West 12' are visible along the dock.

- 34. Leonid Teliga
- 35. Jolie Brise
- 36. Betty
- 37. Gorenjka
- 38. Rupel
- 39. Black Diamond of Durham
- 40. Ocean Scout
- 41. Dasher
- B. Blyth Tall Ship
- W. Willdora
- 42. Swan
- 43. Vahine
- 44. Sila Sibiri
- 45. Urania
- 46. Santa Maria Manuela
- 47. Lord Nelson

Ship location plan – Manor Quay



4. CITY PLAN

4.1 List of City Facilities:

Post Office

45-47 Fawcett St, Sunderland SR1, open 0900-1730hrs Mon-Sat (opens 0930hrs Tuesdays)

Banks

Barclays Bank, 135 Chester Rd, Sunderland SR4 7HP, 0345 734 5345

Barclays Bank, 53 Fawcett St, Sunderland SR1 1RS, 0345 734 5345

Halifax, 61, The Bridges Shopping Centre, Sunderland SR1 3LG, 0191 553 0925

HSBC, 53 Fawcett St, Sunderland SR1 3HW, 0845 740 4404

Santander, 12-13 Waterloo Pl, Sunderland SR1 3HS, 0800 077 8084

RBS, 64 Fawcett St, Sunderland SR1 1BB, 0191 567 8716

The Co-operative Bank, 5-6 Fawcett St, Sunderland SR1 1RF, 0191 565 4147

TSB Bank, 4 Athenaeum St, Sunderland SR1 1QZ, 0191 320 9992

Virgin Money, 10 The Bridges, Sunderland SR1 3LB, 0191 565 6492

Yorkshire Bank, 31 Blandford St, Sunderland SR1 3JH, 0800 456 1247

Crew Centres:

Event Zone A, West of Hudson Dock West Pontoon, Port of Sunderland

Event Zone C, St Peters Campus

Churches and other places of worship

St John's Methodist Church, Ashbrooke Rd, Sunderland SR2 7HQ, 0191 522 7165,
<https://www.sunderlandmethodistcircuit.org.uk/churches/st-johns-methodist-church>

Hope Church, Hendon Rd, Sunderland SR1 2HX, 0191 514 4919,
<https://sites.google.com/site/hopechurchdesign/contact>

Guru Gobind Singh Gurudwara Temple, Ryhope Rd, Sunderland SR2 7ED, 0191 567 2939

Bethesda Free Church, 56-58 Tatham St, Sunderland SR1 2QB, 0191 567 9152,
<https://www.bethesdafreechurch.org/>

Church of Scientology of Sunderland, 51 Fawcett St, Sunderland SR1 1RS, 0191 510 9600, <http://www.scientology-sunderland.org/>

Burn Park Methodist Church, 5 Burn Park Rd, Sunderland SR2 7LS, 0191 514 2218,
<https://www.sunderlandmethodistcircuit.org.uk/churches/burn-park-methodist-church>

Sunderland Chapel Of Light, Cornhill Rd, Sunderland SR5 1RU, 0191 548 1848,
<http://www.scli.org.uk/>

Elim Sunderland, New Durham Rd, Sunderland SR2 7PD, 0191 567 1367,
<http://www.sunderlandelim.org.uk/church/team/>

Sunderland Minster, 309 High St W, Sunderland SR1 3ET, 0191 565 4066,
<http://www.sunderlandminster.com/>

rue Jesus Church, Dundas St, Sunderland SR6 0AY, 0191 510 8986

Hope City Church Sunderland, The Place, Athenaeum St, Sunderland SR1 1QX,
07754 008959, <http://hopecity.church/sunderland/>

The Church of Jesus Christ of Latter-day Saints, 127 Queen Alexandra Rd,
Sunderland SR2 9BT, 0191 528 4561, <https://www.mormon.org.uk/>

Holy Trinity Church, Grange Terrace, Sunderland SR2 7AQ, 0191 568 9710,
<http://www.trinitychurchsunderland.org/>

Bethany City Church, Burdon Rd, Sunderland SR2 7DZ, 0191 565 4000,
<http://www.bethanycitychurch.org/>

The Salvation Army, 4 Roker Ave, Sunderland SR6 0BY, 0191 565 8918,
<https://www.salvationarmy.org.uk/>

Sunderland Mosque, St Mark's Rd N, Sunderland SR4 7YQ,

St Cecilia R C Church, Ryhope Rd, Sunderland SR2 7TG, 0191 567 2718,
<http://www.rcdhn.org.uk/churches07/churchcontact.php?chid=248>

The Apostolic Church in Sunderland, 7 Hudson Rd, Sunderland SR1 2AQ

Enon Baptist Church, 4 Howick Park, Sunderland SR6 0AQ, 0191 567 8635,
<http://www.enonbaptistchurch.org.uk/v3/>

Sunderland Chapel of Light International, 5 Union St, Sunderland SR1 3BT, 0191
551 3016

4.2 City Information

Business/Shop opening hours

Typical shop and business opening hours in the City of Sunderland are:

Monday-Saturday 0900-1700hrs

Sunday 1100-1700hrs

The Bridges Shopping Centre remains open until 2000hrs on Thursdays

Museums

Sunderland Museum and Winter Gardens

Burdon Rd, Sunderland SR1 1PP
Tel: 0044191 561 2323

Monday – Saturday 1000 – 1600hrs, Sunday 1200 – 1600hrs

North East Land, Sea and Air Museums

Washington Road, Sunderland SR5 3HZ
Tel: 0044191 519 0662

1000-1600hrs daily

Sunderland Maritime Heritage

2 Church St E, Sunderland SR1 2BB
Tel: 0044191 510 2540

Open Monday, Wednesday and Friday – 1000 – 1600hrs

Closed; Tuesday, Thursday, Saturday & Sunday, but may open especially for Tall Ships

Sunderland AFC Fans Museum

North Bridge Street, Sunderland SR5 1AP
Tel: 0044191 567 7075

Monday – Saturday 10:00 17:00, Sunday 14:00 17:00

National Glass Centre

National Glass Centre is a cultural venue and visitor attraction, it is also part of the University of Sunderland. Liberty Way, Sunderland SR6 0GL
Phone: 0044191 515 5555

Hours: Open 10.00am - Closes 10PM

Sports Centres

Raich Carter Sports Centre

Commercial Rd, Sunderland SR2 8PD, 0044333 005 0157

Sunderland Aquatic Centre

Stadium Park, Sunderland SR5 1SU, 0044333 005 0151

Sandhill Sports Centre

Grindon Ln, Sunderland SR3 4EN, 0044191 553 8862

Silksworth Community Pool Tennis & Wellness Centre

Silksworth Ln, Sunderland SR3 1PD, 0044333 005 0152

Community North Sports Complex

Kingsway Rd, Sunderland SR5 4BB, 0044191 553 6915

DW Sports Fitness

Timber Beach Rd, Sunderland SR5 3XG, 0044844 372 5363

PureGym

Sunderland Retail Park, Tesco Extra, Newcastle Rd, Sunderland SR6 0BN, 0044845 217 0688

4.3 City Plan



5. CAPTAINS' PROGRAMME

5.1 Captains' Dinner

1900hrs, Wednesday 11 July

At the Stadium of Light

Transport from Event Zones A (Barrack Street) and Zone C (St Peters Way) at 1830hrs

Captain + 1 from each ship – please confirm names of attendees with Ship Liaison Officers on arrival in Sunderland

5.2 Captains' Briefing

Venue: Council Chamber, Civic Centre, Sunderland

Date and time Friday 13 July 1600hrs until 1730hrs

A Captains' Briefing is held prior to the start of a Race or a Parade of Sail and is organised and chaired by Sail Training International, with assistance from the host port.

The format for the briefing is as follows: -

- Briefing for the undocking of the fleet and the Parade of Sail – given by Captain Kevin Ullah, Harbourmaster, Port of Sunderland.
- A qualified meteorological officer will give a weather forecast for the immediate and near future, plus copies of the 24, 48 and 72-hour future prognosis available for Captains to take away.
- Briefing on the Race start, berthing arrangements at Esbjerg and distribution of Captains' Handbooks

A shuttle bus service will be provided to transport Captains to and from the Civic Centre. The pick-up point will be at Barrack Street.

1600hrs, 13 July

At The Council Chamber, Civic Centre

Transport from Event Zones A(Barrack Street) and C (St Peters Campus) at 1530hrs

Return transport will depart 1745hrs, dropping off at Event Zones at 1800hrs.

6. CREW PROGRAMME

6.1 Crew Activities

6.1 Inter Ship Crew Sports Competition

Thursday 12 July 2018, 9.30am – 12.00pm, Cliffe Park, Seaburn

Each ship/composite teams can enter team(s) in multiples of 5 people per team.

Teams will compete in a series of round robin team activities which could include; kwik cricket, handball, big feet hockey, scatter ball, skittle dodgeball, tug of war

Crew members will also have the opportunity to take part in individual challenges which could include; rowing machine, vortex howler, speed bounce, bean bag throw

Running alongside the team and individual competitions there will be a FUN 'come and try offer' which could include; hula hoops, swingball, mini golf, mini tennis/badminton, athletics agility course and more.

	09:00	10:00	11:00	12:00	13:00	14:00	15:00	16:00	17:00	18:00	19:00	20:00	21:00	22:00
WEDNESDAY 11		Crew Centre Zone (open 10:00-18:00)												
		Crew Centre Zone C (open 10:00-18:00)												
		Multi Games on the Multi Use Games Area (09:00-16:00)									Captains Dinner (19:00-23:00)			
			Led Cycle Rides			Led Cycle Rides							Fireworks (21:30)	
			Led Walks			Led Walks							Fireworks (21:30)	
	Pier Tours (Every half hour from 09:00)				Fans Museum Tours (every hour)									
THURSDAY 12		Crew Centre Zone (open 10:00-18:00)												
		Crew Centre Zone C (open 10:00-18:00)												
		Inter Ship Crew Sports Competition (09:30-12:00)						Crew Parade (15:00) & Prize Giving Ceremony (16:00pm)			Crew Party (19:00-23:00)			
		Stadium of Light Tours (@ 10:00 and 10:20)						Crew Parade (15:00) & Prize Giving Ceremony (16:00pm)					Fireworks (21:30)	
FRIDAY 13		Crew Centre Zone (open 10:00-18:00)												
		Crew Centre Zone (open 10:00-18:00)												
		Multi Games on the MUGA (09:00-16:00)					Keelboat Lodge BBQ (14:00-16:00)						Artistic Riverside Performance (21:30)	
							Captains Briefing							
SATURDAY 14		Crew Centre Zone A (open 09:00-12:00)												
		Crew Centre Zone C (open 09:00-12:00)												
						Fleet undocking			Parade of Sail		Race begins			

6.2 Crew Parade

Start point: Civic Centre car park, Burdon Road

Date and time: Thursday 12 July 1500hrs (muster 1400hrs)

Coordination of the Crew Parade is led by Laura Young.

Route

The route for the Crew Parade will be Civic Centre Car Park along Burdon Road, across Wearmouth Bridge and right down to Bonnersfield and to the stage area at St Peters Campus. Burdon Road will be closed to vehicles from 6am and a bridge closure in place. Traffic management will be in place to ensure no conflict between vehicles, Parade and spectators. See plan below.

Assembly time and point

Crews will be requested by their Liaison Officers to gather from 1400hrs on Burdon Road, near the Civic Centre Members' Car Park to be ready to set off at 1500hrs.

Liaison Officers will ensure that their ship is represented in the Parade with their name board.

Volunteers will help gather the ships' crews into an order of Parade as they arrive (in alphabetical order). Ships' crews will be asked to gather in different areas to make the ordering of the Parade easier.

Local involvement

Local school groups and organisations will accompany the Parade to give it a local flavour.

6.3 Prize Giving Ceremony

Venue: Stage, St Peters Campus, Event Zone C

Date and time: Thursday 12 July after Crew Parade, approx 1600hrs

Coordination of the Prize-giving ceremony is led by Sail Training International and the prize-winners are chosen by STI and the Host Port.

Winning ships are requested to send no more than three crew members up onto the stage to collect their prize.

6.4 Crew Party

Venue: The Point, Sunderland City Centre

Date and time: Thursday 12 July 1900hrs until 2300hrs

Shuttle buses will operate to take the crew back to the Port of Sunderland. Pick-up and drop-off points will be Event Zones A (Barrack Street) and C (St Peters Campus). There will be a map of this in the Crew Handbook and inside The Point.

Entry to the Crew Party is for ships' crew only and admission will be permitted on production of the crew badge or the Crew Party wristband. Crew members may be accompanied by their Liaison Officers.

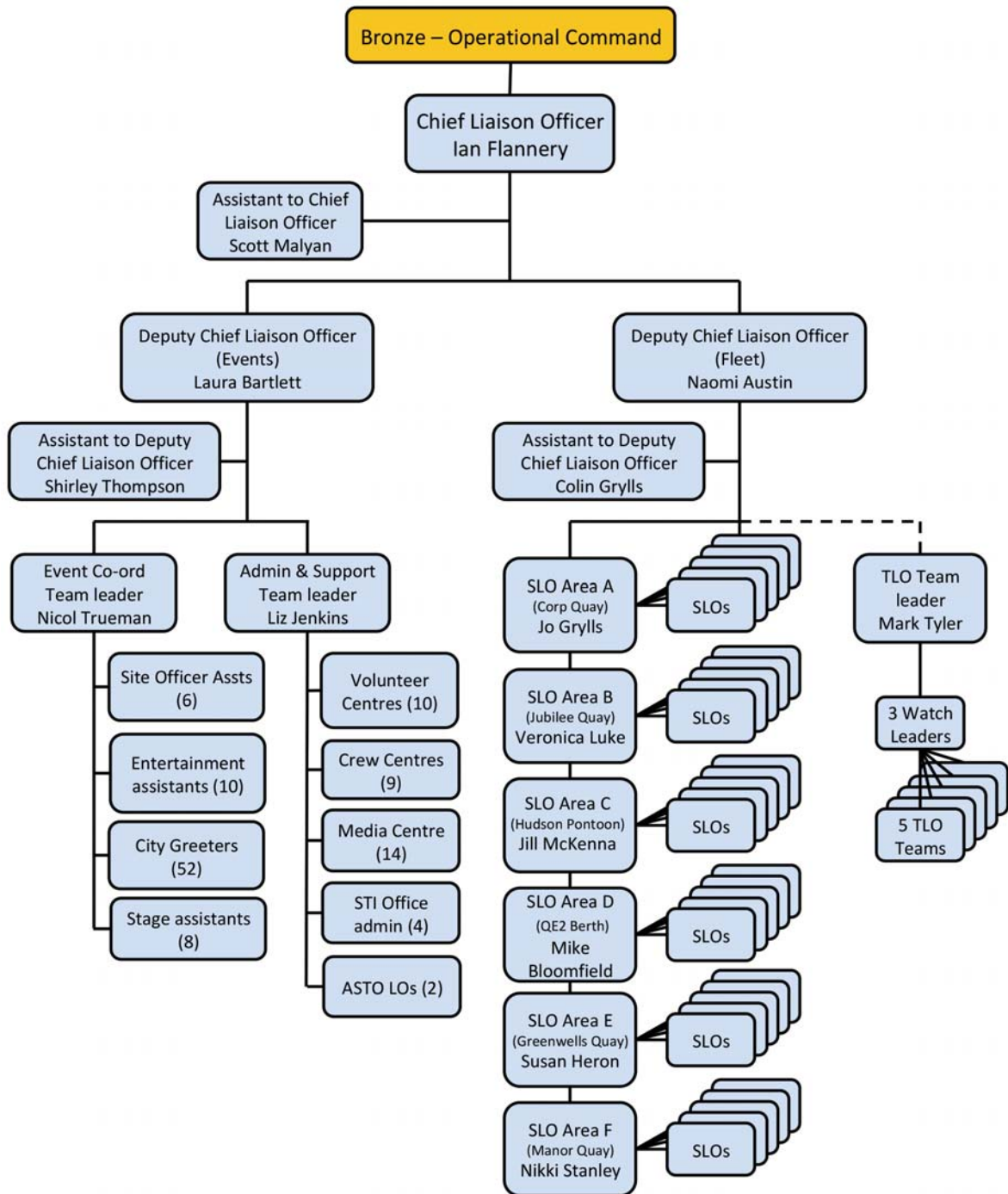
Each crew member will be issued with a coloured wristband provided by STI with 3 tear-off sections which will be accepted as drink tokens. These will be a different colour depending on whether the crew member is under or over 18. For those over 18 only, each section, when handed over at the bar area, will entitle the crew member to half a pint of lager, beer or cider.

Soft drinks and alcohol will be available to buy and water will be available to the crew members free of charge. Drinks will be poured so that crew members do not remove multiple bottles/cans from the venue.

Entertainment will be provided in the form of a DJ. The venue will be split and offer a variety of music and interactive games to appeal to the range of ages.

A hot buffet will be provided from multiple serving points at 2000hrs.

7. LIAISON SYSTEM



7.1 Name & contact details of Chief Liaison Officer:

Ian Flannery - Project Officer

Telephone: +44 (0) 191 561 1397

Mobile: +44 (0) 774 154 511

Email: ian.flannery@sunderland.gov.uk

7.2 Location of Liaison Office (see map):

Event Site A Volunteer Centre, West of Hudson West Pontoon West of Hudson Dock West Pontoon, Port of Sunderland

Event Site C Volunteer Centre, St Peters Campus



8. SHIP SERVICES

8.1 Fuel

Ships berthed on Hudson Dock West Pontoon may refuel by tanker at Cross Quay – all ship movements must be booked through the Technical Liaison Officer Team.

All other vessels will be fuelled at their allocated berths. Arrangements for fuel purchase and delivery are the responsibility of the Ship operator, and may be made directly with the following provider:

Oil NRG

Baltic Street, Hartlepool TS25 1PW
Tel: 00441642 686000
Email: sales@oilnrg.co.uk

Please note that access to the Port by road for deliveries will only be permitted between 2300 and 0900hrs.

Ships with a total length of under 13.5m may refuel at Sunderland Marina, on the North side of the River Wear – please contact the Marina Reception on 001915144721 or call on VHF Channel 37 (M)

Bunkering in the Port of Sunderland

Agents and or Ship's Masters should give 24 hours' notice if they expect to take bunkers in the Port of Sunderland and if this is not practical then as much notice as possible before commencement of bunkering operations.

A) Bunkering by Road Tanker:

A vessel's agent or master must inform the Port via Sunderland Port Control when a firm order to bunker a vessel has been placed, along with the name of the approved supplier. Advice on the type and quantity of bunkers ordered and an approximate time when the bunker operation is scheduled to commence.

B) Bunkering by Barge:

Although a rare operation at the port these days there is no restriction against bunkering in this manner. Again the port must be informed in the above manner as for Road Tanker. The Harbourmaster or his deputy will examine the vessel's risk assessment for the operation. If it is deemed necessary, further instructions will be given to minimise any risk of spillage.

All bunkering operations will be monitored by the port. The vessel must inform port control on channel 14 VHF when it commences and finishes operations. This also applies to lubricating oil transfers by drums.

The Port of Sunderland Bunkering Checklist is to be completed by all vessels prior to commencement of any bunkering operation and the completed checklist made available to either the on-duty Port Control operative or Pilot/Deputy Harbourmaster.

All information to be notified by email to:
portmarineoperations@portofsunderland.com

8.2 Water

Northumbrian Water Limited will provide quayside water replenishment using a temporary delivery system. It would be appreciated if ships could provide refined estimates of water requirement in advance of arrival in Sunderland.

Access to the port by road for deliveries will only be permitted between 2300 and 0900hrs.

8.3 Electricity

Quayside power will be provided at all berths. All power will be supplied in accordance with Vessel Data Sheets as provided by ships. Please ensure that your demands are correct and correlate to UK interpretation of supply – if in any doubt; it may be pragmatic to send a photograph of your power connection point to the Chief Liaison Officer in advance.

8.4 Waste

Solid waste

Ships berthed at Event Zone A please deposit your galley/solid waste at the closest refuse point. Refuse points are located throughout the port. For ships berthed outside of the Port at Manor Quay please present your bagged galley waste at the end of your gangway after 22.30 each evening and by no later than 07.00 in the morning.

Grey/Brown liquid waste

Ships on Hudson West Pontoon are to book a waste removal appointment through the Technical Liaison Officer team. Ships on all other moorings will be serviced in place - appointments to be booked the same channel.

Black waste

Waste of chemical or hazardous nature is to be removed by a professional company following the appropriate legislation. Ships are to use the following company for such waste removal:

Safety Clean

2 Tower Rd, Washington, Sunderland NE37 2SH
0044191 417 8906

8.5 Gas

Bottled gas is available locally from the following suppliers:

Hendon Gas Services

75 Villette Rd, Sunderland SR2 8RA
Tel: 0044191 567 8088

City Hotline Gas

Pallion Shipyard, Pallion Road, Sunderland SR4 6WE
Tel: 004479 8884 6836

Please note that access to the port by road for deliveries will only be permitted between 2300 and 0800hrs on event days.

8.6 Repairs

Low level repairs may be completed by the Sunderland Technical Liaison Officers if suitably qualified/skilled personnel are available. Failing this, TLOs will signpost you to appropriate engineering companies, which include, but not limited to:

Marine Engineering Services Ltd.

Marine Engineering - Tubes, Valves, Fittings in Bronze, Stainless Steel, Gunmetal & Most Ferrous and Non-Ferrous Alloys, Expansion Pieces, Heat Exchanges In Stock

Leechmere East Industrial Estate, Grangetown, Sunderland SR2 9TE
Tel: 00441915 211941
Fax: 00441915 23695

UK Docks Wearside

Based in the Port of Sunderland and have a dry dock and offer the following services:

- Ship repair and refits
- Major conversion work
- Engineering and fabrication
- Vessel upgrades and ship life extension programmes
- Installation of new equipment
- Hull and tank blasting, preparation and painting
- Engine and machinery equipment overhaul
- Electrical, pipework and joinery installations and repairs
- All steel repairs and construction

South Dock, Sunderland SR1 2EE
Tel: 0044191 567 4749
Fax: 0044191 510 0765
Email: wearside@ukdocks.com
Website: www.ukdocks.com/uk-docks-wearside

Speedings Ltd.

Formally a Tall Ship sail maker, and still a flag manufacturer, Speedings produces many kinds of heavy duty industrial textile goods and has the machinery and skills required to repair ships' sails:

48 Carrmere Rd, Sunderland SR2 9TW
Tel: 0044191 523 9933
Email: rob@speedingsltd.co.uk
Website: www.speedingsltd.co.uk

Storror Marine Ltd.

Provide goods and services including, chandlery, ropes, rigging, charts, maintenance supplies and electronics. A sail repair service is also available in their specialist sail loft:

181-183 Coast Rd, Newcastle upon Tyne NE7 7RR

Tel: 0044191 266 1037

Fax: 0044191 240 0436

Email: andy@storrarmarine.co.uk

Website: www.marinechandlery.com

Gibbons International Ltd.

General Ship Supplier - Fresh, Frozen and Dry Provisions, Cabin, Deck , Engine and Hardware stores:

Unit 4A, Spectrum Business Park, Blair Way, Seaham SR7 7PP

Tel: 0044191 581 0029

Fax: 0044191 581 5275

Email: sales@gibbons-int.com

Website: www.gibbons-int.com

A H Monsen Ltd.

Suppliers of provisions, bonded stores, deck, cabin, galley and engine supplies:

Anchor Building, Penrod Way, Heysham LA3 2UZ

Email: shipstores@ahmonsen.co.uk

Tel: Jane Watson - 00447768 391865/John Dodgson 00447971 053208/Hans Monsen 00447802657001

Please note that access to the port by road for services will only be permitted between 2200 and 0900hrs.

8.7 Ship Agents

Denholm Wilhelmsen Ltd

Supply Base, Dinsdale House, Riverside park Road, Middlesbrough

John.Watt@denholm-wilhelmsen.com

00441642 733 590

GT Gillie & Blair Ltd

178 New Bridge Street, Newcastle Upon Tyne NE1 2TE

agency@gillieblair.com

0044191 510 3333

LV Shipping Ltd

Tees Commerce Park, Dockside Road, Middlesbrough, Cleveland TS6 6UZ

Middlesbrough@lvshipping.com

00441642 440744

Odin Shipping Ltd

agency@odinshipping.co.uk
Port of Sunderland, Sunderland SR1 2EE
0044191 510 8383

8.8 Postal Delivery

All postal deliveries to vessels during the event should be sent to the following address. Ship Liaison Officers will collect the post and distribute to the ships.

FAO: (Addressee name), (Ship name)
C/O Gatehouse, Port of Sunderland, Barrack Street, Sunderland SR1 2BU

9. CREW SERVICES

9.1 Crew Centres:

Event Zone A – Port of Sunderland:

Location – Marquee West of Hudson Pontoon West, Port of Sunderland

Event Zone C - North of River:

Location – St Peters Campus

The following services are available at the Crew Centres:

Toilets
Showers
Telephone
WiFi
Indoor and outdoor seating

9.2 Telephones

Telephones will be available to crew in the Crew Centres.

9.3 First Aid.

First Aid will be available throughout the event sites:

- Event Zone A – West end of Gladstone Bridge
- Event Zone B – South corner of Town Moor
- Event Zone C – St Peters Campus, North of Manor Quay, adjacent to the Volunteer Centre

In case of emergency dial 999 for an ambulance.

Sunderland Royal Hospital address is: Kayll Rd, Sunderland SR4 7TP.

9.4 Laundry Facilities

Laundry services are available from Cresswell Launderette. Service washes are to be booked through SLOs by 1500hrs each day Tuesday to Thursday for collection the following morning. The following costs apply and should be paid direct to Cresswell:

7kg – £6.90

13 kg – £10.60

18.1 kg – £13.40

Laundry loads are to be bagged and named clearly, collections will be made from ships between 0700-0900hrs from Wednesday 11 July to Friday 13 July. Laundry will be dropped off back to ships the following morning.

Should direct contact be required Cresswell Launderette may be reached at the following:

1 Cresswell Terrace, Sunderland SR2 7ER
0044191 500 4386 or 00447983649514
Email: gillian.downie@hotmail.co.uk

9.5 Toilets and Showers.

Port of Sunderland Berths:

Event Zone A - West of Hudson Dock West Pontoon, Port of Sunderland

North Bank Berths:

Event Zone C – St Peters Campus

10. Emergency Contact Details

Port Authority

24hr telephone: 0191 514 2752

Fire

In case of emergency - telephone: 999

Non-emergency – telephone: 0044191 4441220

Medical

In case of emergency - telephone: 999

North of River non-emergency – telephone: 0044 191 567 5335

South of River non-emergency – telephone: 0044 191 567 5571

Police

In case of emergency - telephone: 999

Non-emergency – telephone: 0044 1661 872 555

Coastguard

In case of emergency - telephone: 999

RNLI

RNLI telephone: 0044 191 567 3536



THE TALL SHIPS RACES 2018
organised by Sail Training International

Sunderland
City Council



www.tallshipsunderland.com

#WEARONBOARD