

ADVANCE NOTICE

Information for Captains' and Vessel Operators



THE TALL SHIPS RACES 2018

organised by Sail Training International

SUNDERLAND	11 – 14 JULY
ESBJERG	18 – 21 JULY
STAVANGER	26 – 29 JULY
HARLINGEN	3 – 6 AUGUST



OFFICIAL DATES

SUNDERLAND	11 – 14 July	RACE 1
ESBJERG	18 – 21 July	CRUISE-IN-COMPANY
STAVANGER	26 – 29 July	RACE 2
HARLINGEN	3 – 6 August	

**ADVANCE NOTICE
SAIL TRAINING INTERNATIONAL
THE TALL SHIPS RACES 2018
(11 July – 6 August)**

This Advance Notice is to provide owners, vessel operators and Masters/Captains with information about the plans made so far for The Tall Ships Races 2018 and associated events. Further information is available at www.tallshipsraces.com and will be issued by Sail Training International in the “Arrival Arrangements” document, which will be posted on the website approximately six weeks before the start of the Race Series.

Each host port will also produce a detailed Captains’ Manual, which will be available on the Captains’ Page of the website here <http://www.sailtraininginternational.org/vessels/captains-page>, and a printed copy will be given to each vessel in port.

The following files can be downloaded from the Captains’ Page on our website at www.sailtraininginternational.org/vessels/captains-page

1. The current edition of the Racing & Sailing Rules
2. Crew List Form (EXCEL spreadsheet)
3. Vessel Life Saving Appliance Check List
4. Sail Training International Memorandum on Safety

Owners and Captains/Masters **MUST** read these documents to help them prepare for this year’s Races.

GENERAL INQUIRIES

If you have any queries, or need further information, please contact: -

Amanda Goodden
Race Directorate Administrator
Sail Training International
Charles House
Gosport Marina
Mumby Road
Gosport
Hampshire
PO12 1AH, UK

Tel: + 44 (0) 23 9258 6367
Fax: + 44 (0) 23 9258 4661
E-mail: amanda.goodden@sailtraininginternational.org

RACING & SAILING RULES 2018

The Racing & Sailing Rules and Special Regulations 2018 is available to download from the **Captains' Page** on our website: www.sailtraininginternational.org/vessels/captains-page.

Race One (Sunderland to Esbjerg), is designated as Category 1, and Race Two (Stavanger to Harlingen) is designated as Category 2 in accordance with Rule 2.02 of the Racing and Sailing Rules 2018.

All vessels are required to have an active AIS transponder on board.

Participants are urged to make sure they study and use the Current Edition of the Racing & Sailing Rules and Special Regulations.

SAIL TRAINING INTERNATIONAL RULE OF RATING AND RACE PRIZES

Each registered vessel will be issued with a Rating Certificate which will be calculated by Sail Training International's unique Rule of Rating which ensures that all vessels will be able to race equally on corrected time. All new vessels to The Tall Ships Races will be provided with a Measurement Form which will need to be completed in advance.

Trophies will be awarded for first, second and third places per class on corrected time, and for first on elapsed time (line honours) and overall on corrected time for each race leg. There will be many other special prizes for competing vessels, including for the best crew in the crew parade. Vessels from all classes competing in all race legs will be eligible for the overall race series prizes.

The principal award will be the Tall Ships Races 2018 Friendship Trophy which will be awarded to the vessel which, in the opinion of the competing captains and crews, has contributed the most to international understanding and friendship.

RACE POSITION REPORTING AND MARINE COMMUNICATIONS EQUIPMENT

For safety reasons, and to help the interest of the young crews during a race, Sail Training International organises a twice-daily radio schedule. Vessels' positions are passed over the radio and logged by the communications vessel. The corrected placings are then re-broadcast so that they may be plotted for all on board to see. Results and charts showing the fleet's positions are also posted onto the race websites at www.tallshipsraces.com.

Full Sailing and Communications Instructions are to be collected by Captains/Masters on arrival, from the Sail Training International Race Office in Sunderland for Race 1 and in Stavanger for Race 2.

Radio schedules will be conducted either on MF, VHF or satellite phone. The MF frequency used will be 4146 KHz. The VHF frequency used will normally be channel 77. Any change to these frequencies will be notified in due course. Race starts are normally conducted on VHF channel 77. Please note that a VHF radio and type approved 406 MHz EPIRB are compulsory for these races.

SATELLITE TRANSPONDERS

Sail Training International will again provide participants with a 'YellowBrick' satellite transponder for The Tall Ships Races 2018. There will be no charge to the participating vessels but the 'YellowBrick' transponder will be the responsibility of the Captain/Master until they return it to Sail Training International at the end of the last race that they participate in. Captains/Masters will need to sign to this effect.

We hope that everyone will appreciate the significant benefits that this scheme brings to vessel operators and their sponsors, as well to the crews and their family and friends ashore who wish to follow their vessel's progress.

For more information about the 'Yellowbrick' satellite transponder, please go to: www.ybtracking.com.

CREW CHANGES

Vessel operators and Captains/Masters are reminded that the social programmes in each of the four ports are designed to a similar pattern [see "Draft Port Programmes"]. The main crew activities - sports, prize-giving and crew party – **are usually held on the second day** of the official port dates.

In order to allow a vessel's trainee crew to gain maximum benefit from the social programme and, in particular, to take part in the prize-giving and crew party which follows it, **it is strongly recommended that crew changes are conducted on the third day of the official port dates.**

Many vessels do this already and crew changes often take place in the very early hours of day three. Our experience is that trainees who have to leave their vessel before the prize-giving and crew party feel they are being deprived of an important part of the whole "experience" and would much prefer to have the chance to stay for those events, even if it means having to travel late at night or early in the morning. For 2018 the recommended crew change dates are:

Sunderland - Friday 13 July; Esbjerg - Friday 20 July; Stavanger - Saturday 28 July; Harlingen - Sunday 5 August.

CRUISE-IN-COMPANY: ESBJERG, DENMARK TO STAVANGER, NORWAY

A Cruise-in-Company is planned between Esbjerg in Denmark and Stavanger in Norway, giving ships the chance to visit some guest harbours between the two ports. These guest harbours are busy working to welcome the fleet with the best they have to offer. The Cruise-in-Company brochure will be found at the Captains' Page on our website: www.sailtraininginternational.org/vessels/captains-page.

VESSEL LIFE SAVING APPLIANCES INSPECTIONS (rule 12.2.1)

All vessels will be required to conform to the Sail Training International Special Regulations in the Racing & Sailing Rules and Special Regulations, Current Edition. The Vessel Life Saving Appliances Report form **MUST** be completed prior to each race and signed by the Captain/Master and presented to the STI Race Office within 12 hours after the official start of the port event (see draft port programmes). Sail Training International will endeavour to inspect all vessels before the Race start.

VISAS

Visa Requirements for UK, DENMARK, NORWAY and THE NETHERLANDS

Individual race entrants are responsible for ascertaining what visas or other documents will be required by their ship's company when arriving in the UK, Denmark, Norway and The Netherlands and to obtain such visas themselves. Captains/Masters should note that ships or crew originating from any EU and Schengen countries^{Note1} do not need visas to visit any of this year's ports. However, they are advised to check that individual crew members conform to this requirement. Lists of countries whose citizens do require visas can be obtained from any of the host ports.

Note 1: The Schengen countries are: Austria, Belgium, Czech Republic, Denmark, Estonia, Finland, France, Germany, Greece, Hungary, Iceland, Italy, Latvia, Lithuania, Luxembourg, Malta, The Netherlands, Norway, Poland, Portugal, Slovakia, Slovenia, Spain, Sweden and Switzerland. All these countries except Norway and Iceland are European Union members.

Please be aware that Russian ships will have to contact the relevant countries' consulates since they will need visas for entering the Schengen area.

VISAS FOR NORWAY: Most visitors from countries outside the EU/EEA must apply for a visitor's visa:

<https://www.udi.no/en/want-to-apply/visit-and-holiday/>

IMMIGRATION RULES FOR DENMARK: According to new Danish immigration regulations as from September 2017 all crew members must show their passport upon arrival in Esbjerg. The police plan is to meet the crew onboard the ship before they disembark

DIPLOMATIC CLEARANCE – Military Vessels

Military vessels taking part in the Races will need diplomatic clearance to enter foreign territorial waters. Captains/Masters of military vessels are reminded to make sure that the period of time they have applied for takes into account the possibility of their vessel finishing the Race early and arriving in port outside the published official port dates. They are also advised to ensure that they have clearance for the Cruise-in-Company area of sailing and intended visit ports.

CLASS A

SHIP OPENING TIMES TO THE PUBLIC

The Tall Ships Races usually attract hundreds of thousands of visitors during the festivities in the host ports, and there is often huge interest in visiting ships. It is therefore greatly appreciated if ships would open their decks to the public.

Whilst it remains at the discretion of the Captain/Master to decide ship opening times, ports have suggested that the following times would be appropriate for ships to be opened to the public:

Sunderland	Times between 1000 and 2100
Esbjerg	Times between 1000 and 2100
Stavanger	Times between 1000 and 2100
Harlingen	Times between 1000 and 2100

DRAFT PORT PROGRAMMES

SUNDERLAND

11 - 14 July

(Local Times)

Wednesday 11 July

1000 - 2200	Event areas open to public
1000 - 1900	Crew cultural and sports activities
1200	All participating ships to be in port
1200 - 2100	Open Ships encouraged
1900 - 2300	Captains' Dinner

Thursday 12 July

1000 - 2200	Event areas open to public
1000 - 2100	Open Ships encouraged
1000 - 1900	Crew cultural and sports activities
1400	Crew Parade
1500	Prize giving
1930 - 2300	Crew Party

Friday 13 July

1000 - 2200	Event areas open to public
1000 - 2100	Open Ships encouraged
1000 - 1400	Crew sports and cultural activities
1600	Captains' Briefing

Saturday 14 July

1000 - 2000	Event areas open to public
1000 - 1200	Open Ships encouraged
1445	Start of Ships undocking
1515 - 1800	Parade of Sail

SUNDERLAND BERTHING PLAN



ESBJERG - 18 July - 21 July

(Local Times)

Wednesday 18 July

1200	All participating vessels to be in port
1200 - 2100	Open Ships encouraged
1400 - 1800	Crew activities
1500 - 1600	Opening Ceremony
1900 - 2300	Captains' Dinner, Music House
1900 - 2200	Deck Receptions

Thursday 19 July

1000 - 1400	Crew Activities
1000 - 1800	Open Ships
1200 - 2200	Deck receptions
1500 - 1600	Crew Parade
1600 - 1700	Prize Giving
1900 - 2300	Crew Party

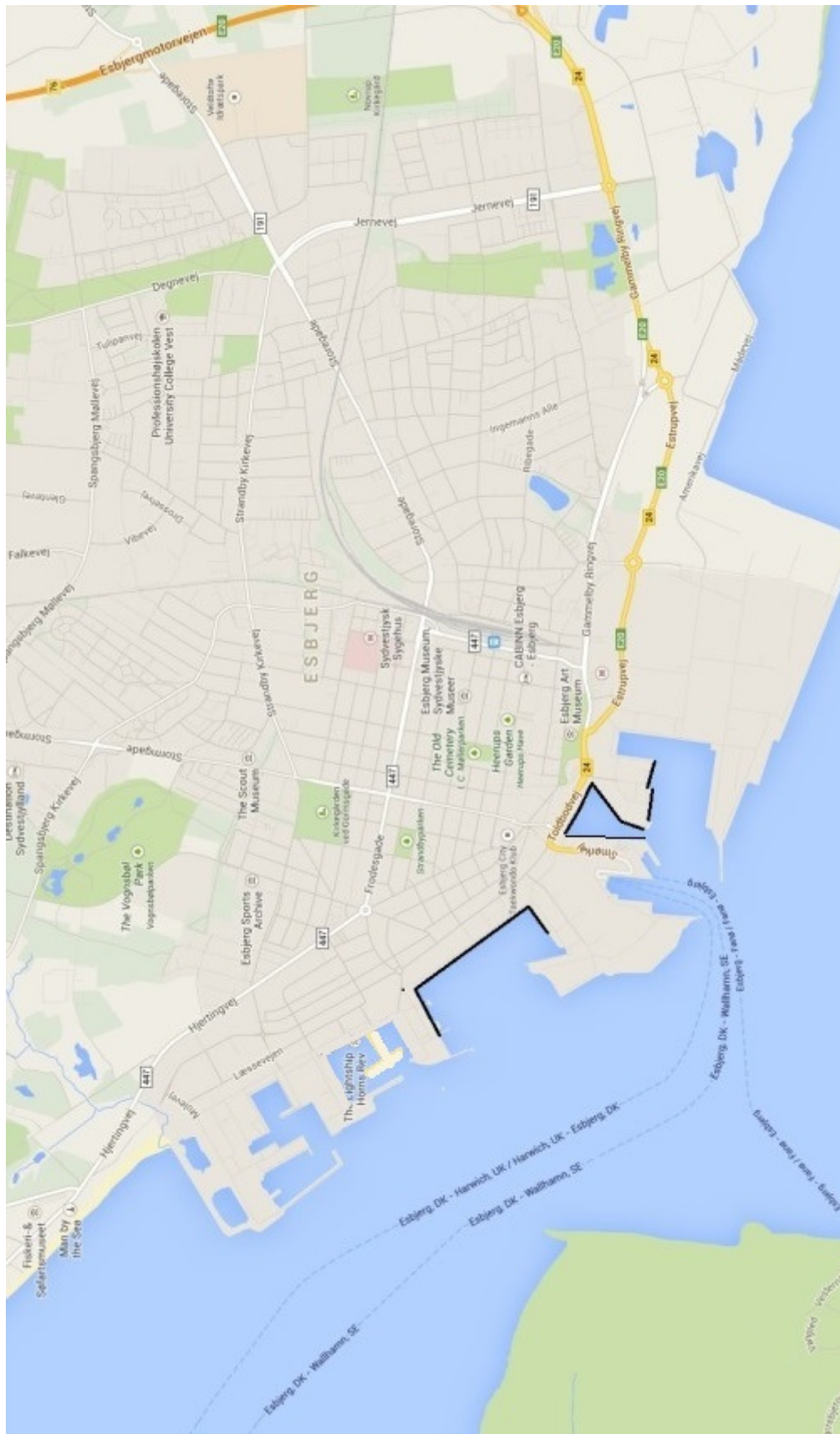
Friday 20 July

1000 - 1600	Crew Activities
1600 - 1700	Captains' Briefing, Music House

Saturday 21 July

1300	Parade of Sail
-------------	-----------------------

ESBJERG BERTHING PLAN



STAVANGER - 26 July - 29 July

(Local Times)

Thursday 26 July

1000 - 0000	Event area open
1200	All participating ships to be in port
1700	Opening Ceremony with concert
1900	Captains' Dinner

Friday 27 July

1000 - 0000	Event area open
1000 - 1500	Crew Activities
1600 - 1700	Crew Parade
1700	Prize Giving Ceremony
1900 - 2300	Crew Party

Saturday 28 July

1000 - 0000	Event area open
1200 - 1500	After Guard Party
1600	Captains' Briefing
2200	Closing concert with fireworks

Sunday 29 July

1000 - 1500	Event area open
1200	Start of fleet undocking
1300	Tall Ships Sail Parade

STAVANGER BERTHING PLAN



HARLINGEN - 3 August - 6 August

(Local Times)

Friday 3 August

1000 - 2300	Event Area Open
1330 - 1600	Sail in Parade
1000 - 2300	Music on different stages
1600 - 2100	Tall Ships open for visitors
1930 - 2300	Captains' Dinner

Saturday 4 August

1000 - 2300	Event Area Open
1100 - 2100	Tall Ships open for visitors
1100 - 2300	Music on different stages
1000 - 1800	Nautical Market
1000 - 1500	Crew Sport and cultural Activities
1600 - 1730	Crew Parade
1730 - 1800	Prize giving ceremony
1900 - 0000	Crew Party
2300 - 2330	Firework show

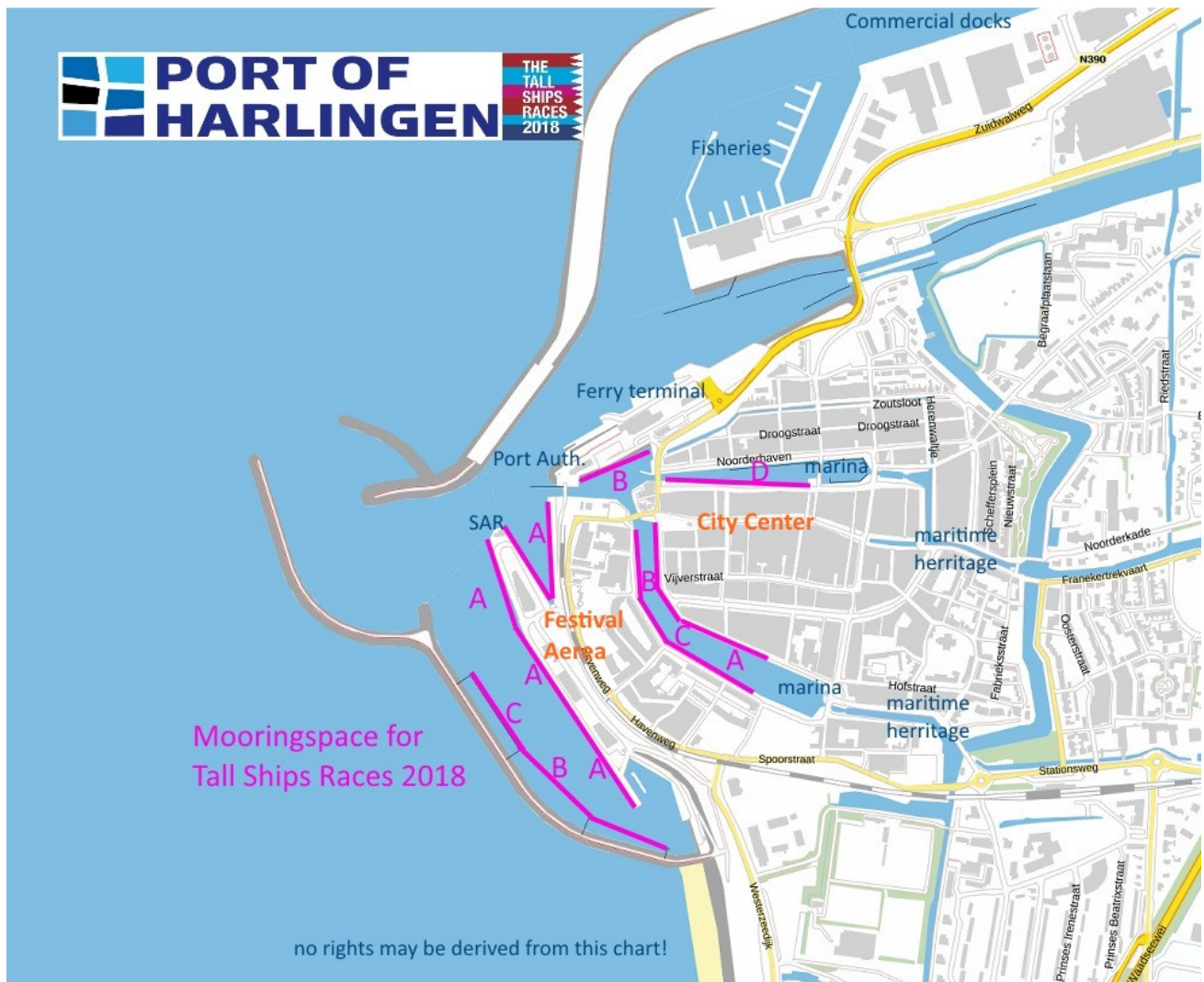
Sunday 5 August

1000 - 2300	Event Area Open
1100 - 2100	Tall Ships open for visitors
1100 - 2300	Music on different stages
1000 - 1700	The Sea The Sea, literary festival
1000 - 1800	Nautical Market
1600 - 1700	Captains' Briefing
2300 - 2330	Firework show

Monday 6 August

1000 - 1700	Event Area Open
1100 - 1700	Music on different stages
1330 - 1700	Tall Ships Parade

HARLINGEN BERTHING PLAN



DRAFT COURSES - Please note that the Race Committee reserve the right to change these race courses

NOTE

The courses given below are **provisional** and may be changed. Confirmation will be given during the Captains' Briefing in each race start port and will also be published in the SAILING & COMMUNICATIONS INSTRUCTIONS which Captains/Masters collect from the Sail Training International Race Office in Sunderland for Race 1 Stavanger for Race 2.

The Tall Ships Races - Race One Sunderland (11 - 14 July) to Esbjerg (18 – 21 July)		
Race Start	54° 55' N 001° 12.5' W	Off Sunderland
WP 1	56° 16' N 005° 43' E	Leave to STARBOARD
WP 2	54° 51' N 005° 55' E	Leave to PORT
Finish	55° 26' N 07° 50' E	180T from South Cardinal Marker for 5nm

Cruise-in-Company from Esbjerg to Stavanger 21 – 26 July

The Tall Ships Races - Race Two Stavanger (26 - 29 July) to Harlingen (29 July – 3 August)		
Race Start	59° 02' N 005° 55' E	Off Stavanger
Finish	54° 13' N 004° 57' E And 54° 13' N 004° 50' E	Finish Line between two WPs north of German Bight TSS

SHIPS' MAIL

The addresses below are the official addresses for any mail being sent during the Races either to a vessel or an individual crew member on board. When addressing mail to anyone in the fleet it is imperative that the **NAME OF THE VESSEL** is clearly stated.

SUNDERLAND

Fleet's last full day in port: Friday 13 July

Name of individual

Name of vessel

Guard Box, Port of Sunderland

Barrack Street

Sunderland

SR1 2BU

ESBJERG

Fleet's last full day in port: Friday 20 July

Name of individual

Name of vessel

Tall Ships Races Esbjerg

Torvegade 74

6700 Esbjerg

Denmark

STAVANGER

Fleet's last full day in port: Saturday 28 July

Name of individual

Name of vessel

The Tall Ships Races 2018 Stavanger

Strandkaiaen 46

4005 Stavanger

Norway

HARLINGEN

Fleet's last full day in port: Sunday 5 August

Name of Individual

Name of Vessel

The Tall Ships Races Harlingen 2018

Stichting Harlingen Sail

Zuiderhaven 79A

8861 CM Harlingen

The Netherlands

CREW TRAVEL - SUNDERLAND - Arrival/Transfer Information

Getting to Sunderland:

With great road and rail links, a direct Metro rail connection from Newcastle International Airport taking you to the city centre within an hour, and a sea port minutes from open water, Sunderland is easily accessible however you choose to travel.

By bus: [NEXUS journey planner](#)

By train: [National Rail Planner](#)

By air: [Newcastle Airport](#)

By ferry: [DFDS Ferries](#)

By Metro: [Metro](#)

By car: [AA Route Planner](#)

CREW TRAVEL - ESBJERG – Arrival/Transfer Information

Taxi

Esbjerg Taxa: +45 75 14 45 00

By Road

From Esbjerg you easily reach northern Europe and Scandinavia by car. Esbjerg is situated on the E20 highway and is only an hour drive from Germany.

By Rail

Train from/to Copenhagen takes about 3 hours.

Hamburg is about 5 hours away. www.dsb.dk

By Air

There is easy access from/to the following international airports:

- Esbjerg Airport is 10 minutes from Esbjerg and has commercial flights to Aberdeen and Stavanger. www.esbjerg-lufthavn.dk
- Copenhagen Airport (3 hours drive) www.cph.dk
- Aarhus Airport (2 hours drive) www.aar.dk
- Billund Airport (1 hour drive), www.billund-airport.dk

CREW TRAVEL - STAVANGER Arrival/Transfer information

Stavanger is situated in Rogaland county in southwestern Norway and is an easy destination to reach from the rest of Norway, Scandinavia and Europe by plane, train, express coach, ferry or car. The most useful website containing travel information is: www.regionstavanger.com
All Norwegian Cruise-in-Company ports also have easy connections to/from Stavanger via train, bus or ferry.

By plane

Stavanger International Airport Sola is a 20 minute drive from Stavanger. You can fly directly between Stavanger and a total of 24 international scheduled and charter destinations and from all major Norwegian airports. KLM, Norwegian and Scandinavian Airlines (SAS) operate several flights daily to/from the airport, whilst other international airlines operate less frequent services. The airport express bus arrives only a two-minute walk from the harbour.

Flight destinations: <https://avinor.no/en/airport/stavanger-airport>

How to get to and from airport:

- Airport express bus: www.flybussen.no/stavanger/
- Taxi:
 - Taxi Stavanger, phone: +47 51 90 90 90
 - Sandnes Taxi, phone 47 51 66 16 00

By train

The train station is situated in the heart of Stavanger and only a five-minute walk from the harbour. NSB (Norwegian Railways) has daily connections with cities like Kristiansand and Oslo.

Check their website for timetables (buy tickets before boarding any train): <https://www.nsb.no/en>

By express coach and bus

Several bus companies operate an extensive national network of express coaches linking the Stavanger region to Oslo, Bergen, Kristiansand and other major towns and cities. There is also an extensive local and regional bus network. Stavanger's bus station is next to the train station and merely a five-minute walk from the harbour:

Express coaches Stavanger-Bergen: <https://kystbussen.no/>

Express coaches to/from other destinations: www.nor-way.no

Local public transport: www.kolumbus.no

By ferry

The Stavanger region has daily ferry connections to Bergen and Hirtshals (Denmark). For timetables and bookings see www.fjordline.no. There are also ferries between Hirtshals and Kristiansand with corresponding train and express bus services to/from Stavanger, for Kristiansand ferries see www.colorline.no and www.fjordline.no.

By car

European road E39 between Kristiansand and Bergen/Trondheim passes through Stavanger. The city centre ("Sentrum") and its car parks are well sign posted from E39. European road E134 and national roads 13, 42 and 45 also take you to/from the Stavanger region.

CREW TRAVEL - HARLINGEN Arrival/Transfer Information

Harlingen is located in the province of Friesland. From the capital Amsterdam it is about one hours' drive by car.

By plane

International flights arrive in the Netherlands at Amsterdam Schiphol (**AMS**), Rotterdam The Hague Airport (**RTM**), Groningen Airport Eelde (**GRQ**), Eindhoven Airport (**EIN**) and Maastricht Aachen Airport (**MST**). Check websites in your country that compare different airlines for flying with the best deal. Local Dutch websites:

www.klm.nl

www.vliegtickets.nl

www.skyskanner.nl

www.cheaptickets.nl

Rent a car at the airport

It's possible to rent a car at the airports. Check the following websites:

www.rentalcars.com

www.sixt.nl

www.hertz.nl

By Car

- Coming from the Southwest of the Netherlands (AMS, RTM):

Follow Amsterdam and then keep driving in the direction of Leeuwarden (A7) and N31. After 10 km on the N31 you find Harlingen.

- Coming from the Southeast of the Netherlands (EIN, MST):

Route (A6 or A27) to Almere, Lelystad, Emmeloord, Lemmer, Joure. Then (A7) to Sneek, Bolsward, Makkum and N31 to Leeuwarden. After 10 km on the N31 you find Harlingen.

- Coming from the East of the Netherlands (GRQ):

Route to Leeuwarden (A7/N7 or A32). Then N31 to Harlingen. After 25 km on the N31 you find Harlingen.

By bus or train

Harlingen can also be reached by bus or train.

1. When traveling (also from **Amsterdam (Schiphol)**, **Rotterdam**, **Eindhoven** or **Groningen**), you travel best by train to Leeuwarden. There is a direct train connection from Leeuwarden to Harlingen. Check www.ns.nl or www.9292ov.nl for your personal travel schedule. (English available)
2. Check www.9292ov.nl for traveling by bus.
3. There are 1200+ cheap connections by bus via www.flixbus.nl (multiple languages available). Closest stop with direct train connection to Harlingen is Groningen, with 34 direct Flixbus destinations.

Taxis

At the airports and in front of practically all the train stations cabs are waiting to take you all over the country.

Taxis aren't cheap, for short distances (5 km) an approximate €15,00 is charged.

CAPTAINS' / MASTERS' NOTES:

FUTURE RACES, FESTIVALS AND EVENTS

2018

Three Festivals Tall Ships Regatta



Liverpool, UK

Fri 25 to Mon 28 May

Race 1

Dublin

Fri 1 to Mon 4 June

Race 2

Bordeaux, France

Thurs 14 to Mon 18 June

2018

The Tall Ships Races



Sunderland, UK

Wed 11 to Sat 14 July

Race 1

Esbjerg, Denmark

Wed 18 to Sat 21 July

Cruise-in-Company

Stavanger, Norway

Thurs 26 to Sun 29 July

Race 2

Harlingen, The Netherlands

Fri 3 to Mon 6 August

2018

SCF Far East Tall Ships Regatta



Yeosu, South Korea

Mon 27 to Sat 1 September

Race/Cruise 1

Vladivostok, Russia

Sun 9 to Tues 11 September

Tues 11 September

Day Race

Vladivostok, Russia

Tues 11 to Fri 14 September



2019

*L'Armada, Rouen
France*

Thurs 6 to Sun 16 June

Endorsed Event

2019

The Tall Ships Races



Aalborg, Denmark

Wed 3 to Sat 6 July

Race 1

Fredrikstad, Norway

Thurs 11 to Sun 14 July

Cruise-in-Company

Bergen, Norway

Sun 21 to Weds 24 July

Race 2

Aarhus, Denmark

Thurs 1 to Sun 4 August

2020

The Tall Ships Races



Lisbon, Portugal

Thurs 2 to Sun 5 July

Race 1

Cádiz, Spain

Thurs 9 to Sun 12 July

Cruise-in-Company

A Coruña

Fri 24 to Mon 27 July

Race 2

Dunkirk

Thurs 6 to Sun 9 August

20/04/2018



Sail Training International