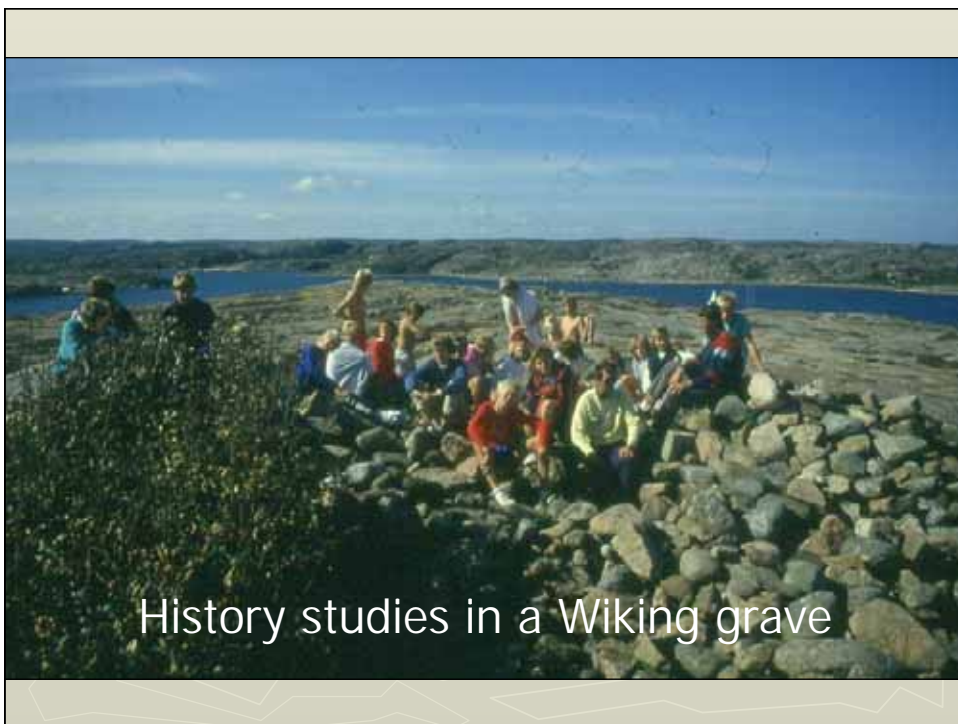
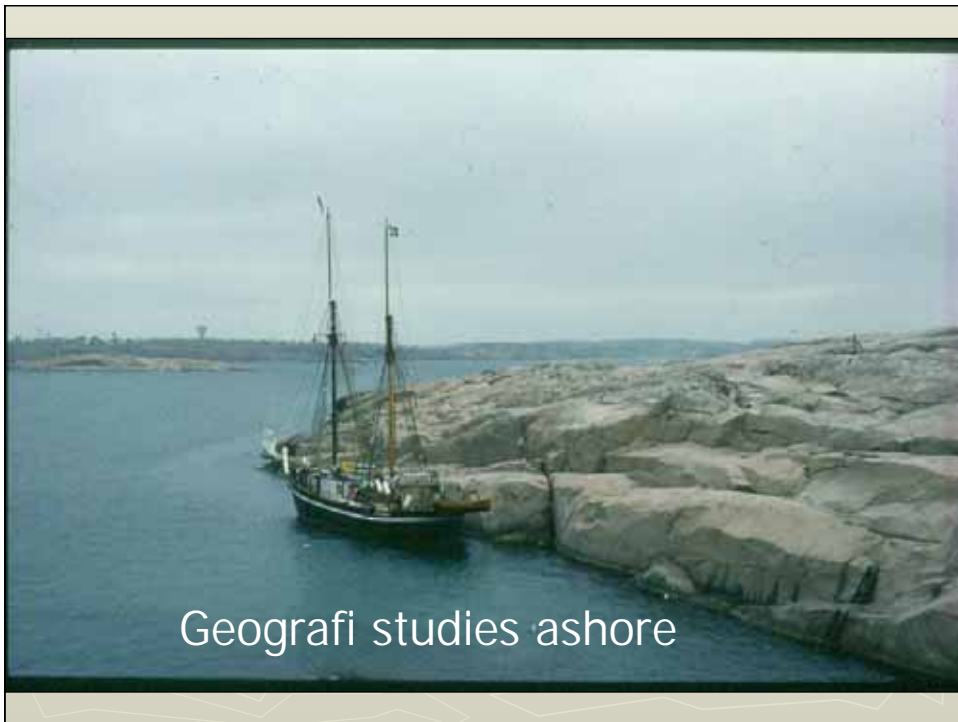




HAWILA

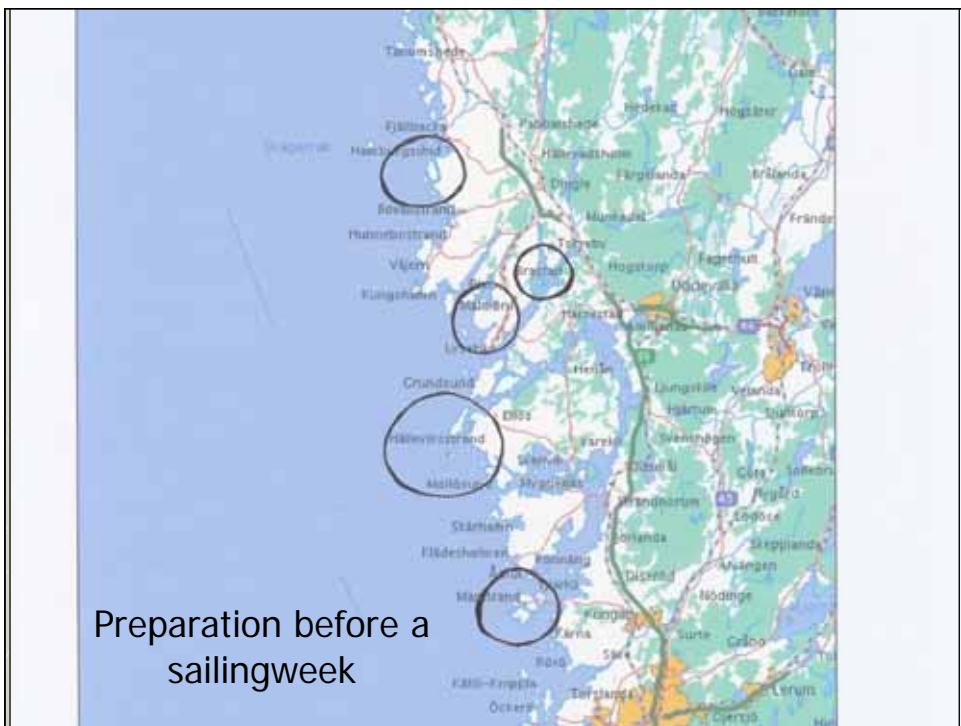
Environmental studies with middle school pupils





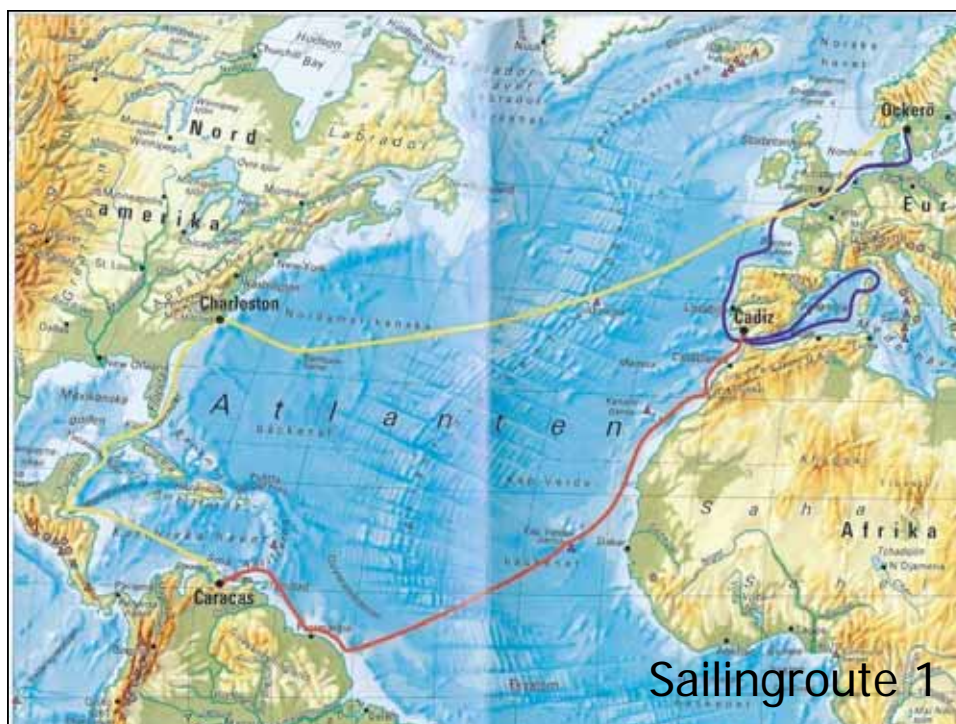
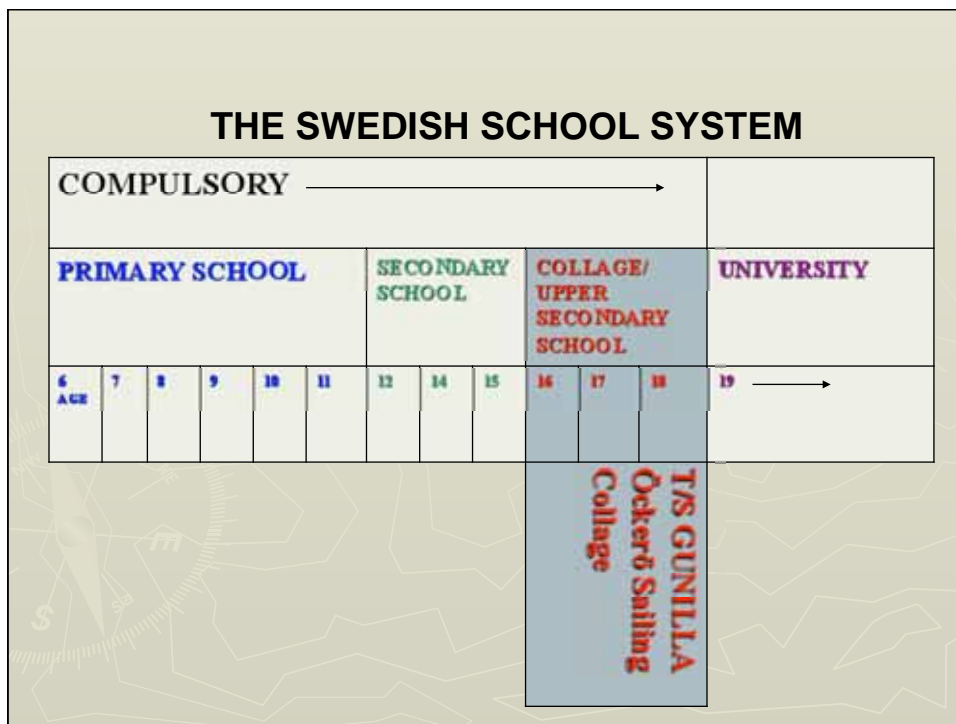


Navigation



Preparation before a sailingweek



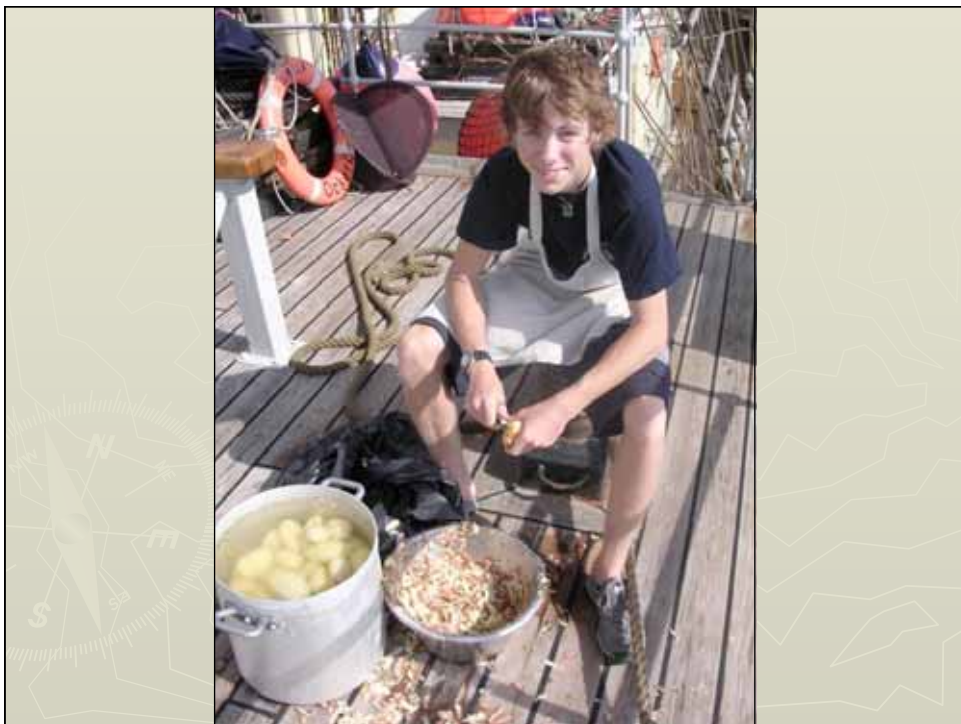


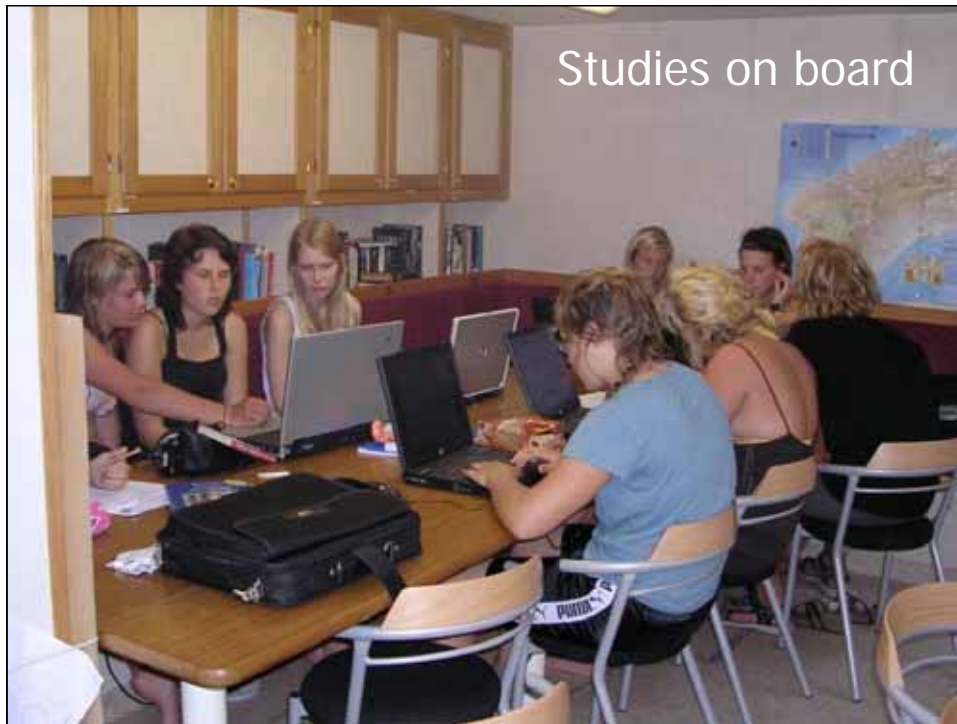


- ▶ 44 students and 11 officers/teachers
- ▶ Sailing 3½ / 2½ month / year
- ▶ 1 year – Atlantic
- ▶ 2 year – Europe
- ▶ 3 year – Central and North America
- ▶ Every year 6 month in the school at home







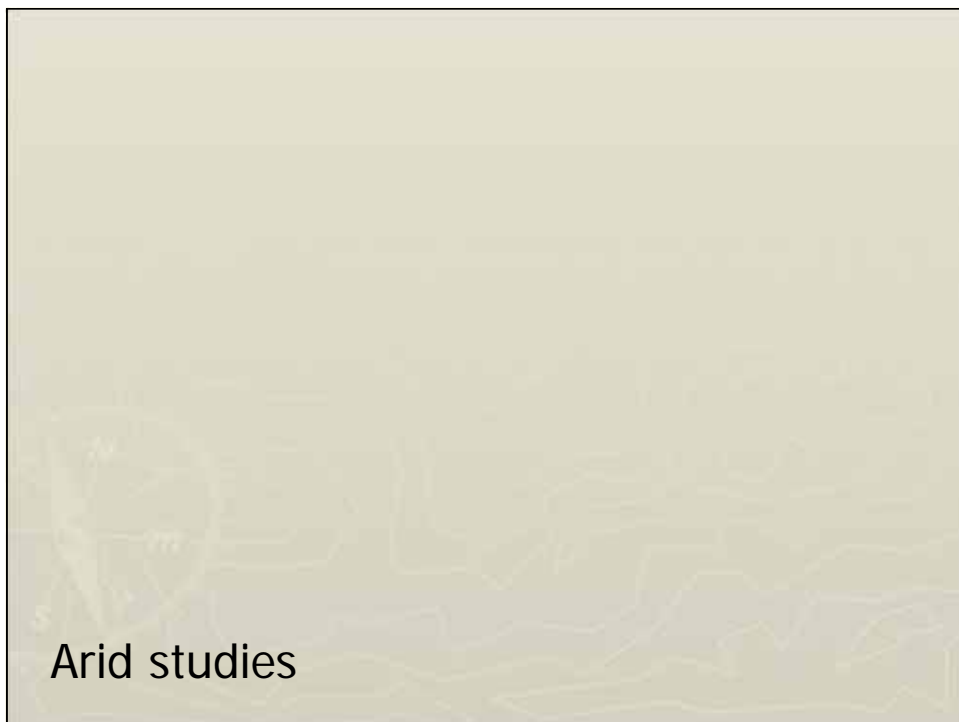
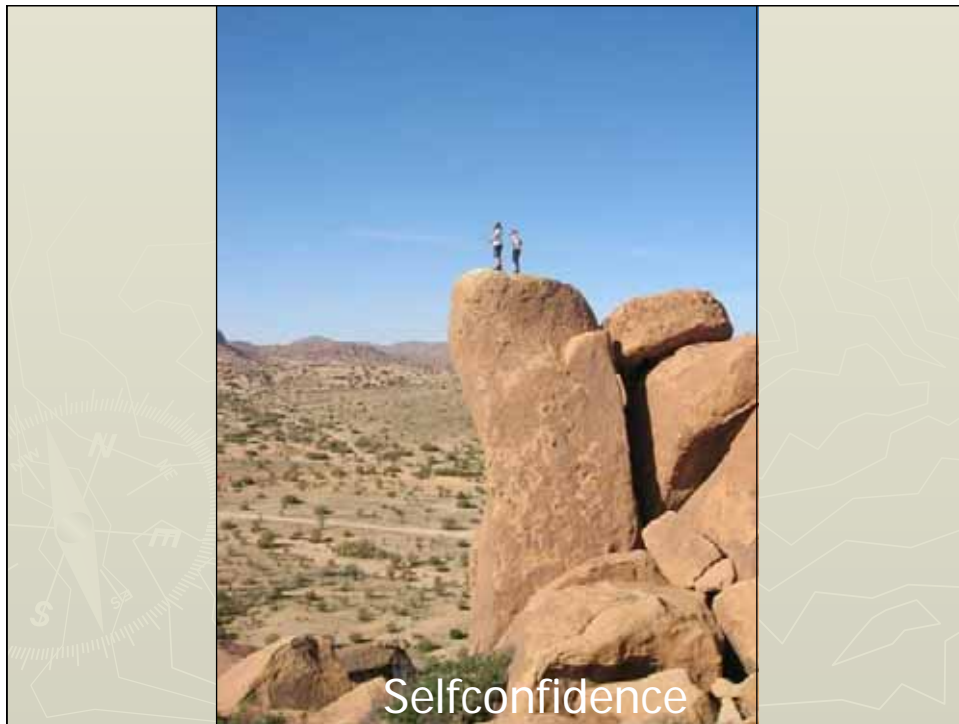




Marin biology - investigation



Research work









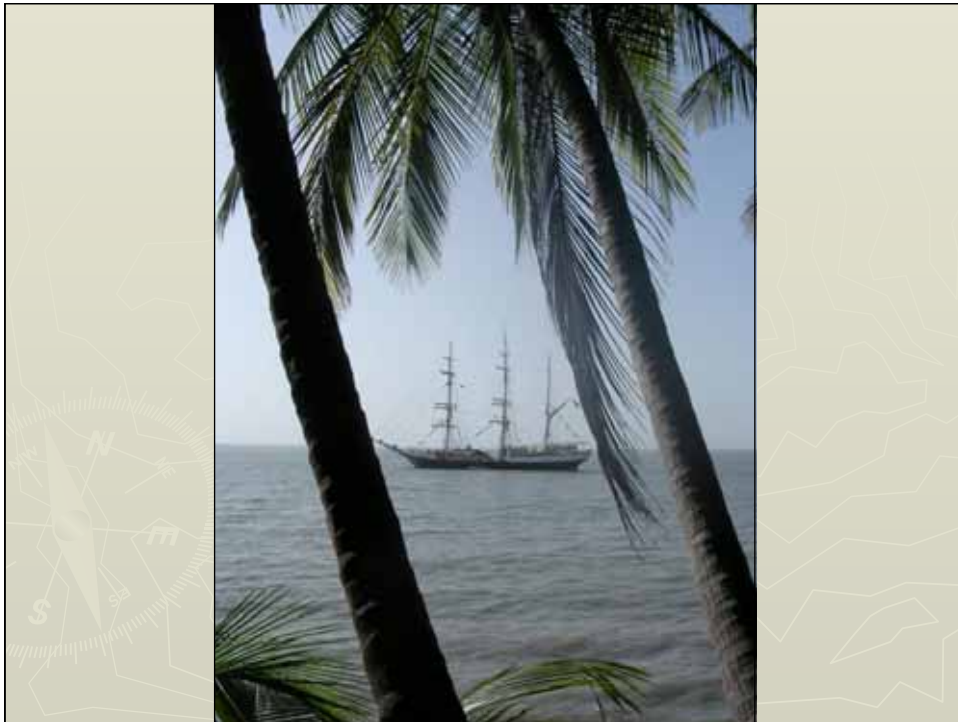
Studies in the rainforest







Evaluation of the day







Students after graduation



- ▶ 75% continue to explore the world for a year followed by University studies
- ▶ Lawyer
- ▶ Master of Engineering
- ▶ Technical design
- ▶ Teachers
- ▶ Marine Biology
- ▶ Psychologist
- ▶ Medical Doctor
- ▶ Architect
- ▶ Master mariner
- ▶ Nurse
- ▶ Sociology